



NIGERIA CENTRE FOR DISEASE CONTROL AND PREVENTION

Nigeria Centre for Disease Control and Prevention

Protecting the health of Nigerians

Weekly Epidemiological Report

Week 19: 5th – 11th May 2025

Highlight of the week

WORLD HAND HYGIENE DAY 2025: GLOVES PROTECT, BUT CLEAN HANDS SAVE LIVES



On 5 May 2025, Nigeria celebrated World Hand Hygiene Day with the theme “*It Might Be Gloves. It’s Always Hand Hygiene.*” At the NCDC, hand hygiene is recognized as essential for patient safety and combating antimicrobial resistance.

Through the Turn Nigeria Orange movement, over 393 trained IPC professionals are strengthening infection prevention nationwide, supported by a national IPC budget, policy, and surveillance systems. The event at Maitama District Hospital reinforced that gloves are not a substitute for clean hands.

The NCDC calls on all healthcare workers and communities to practice proper hand hygiene at every patient interaction, reminding everyone that gloves protect, but only clean hands prevent infections. #GloveStewardship

Summary of Incidents

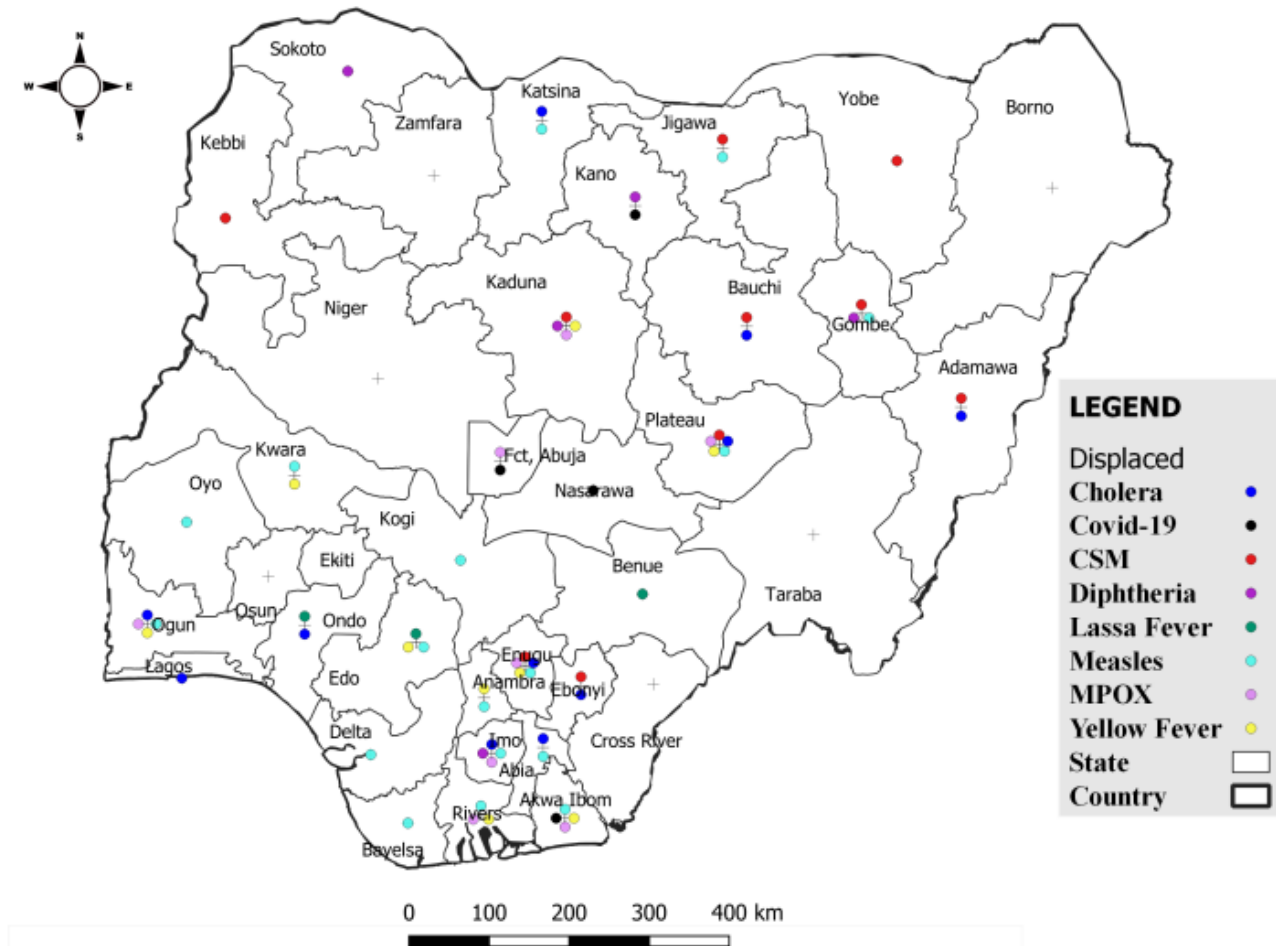
Ongoing incidents

5

The Ongoing incidents within the reporting week are Lassa Fever, Cholera, Mpxo, CSM and Diphtheria.

**Ongoing incidents are defined as confirmed cases where a national EOC or equivalent has been activated.*

Figure 1: Priority Diseases under surveillance in Nigeria, week 19, 2025.



Summary of Diseases

Table 1: Week 19 (5th – 11th May 2025)

Lassa Fever ₁	Cerebrospinal Meningitis (CSM) ₂	Yellow Fever ₂
82 Suspected case(s)	141 Suspected case(s)	21 Suspected case(s)
3 Confirmed case(s)	10 Confirmed case(s)	0 Confirmed case(s)
2 Death(s)	1 Death(s)	0 Death(s)
Cholera ₂	Measles ₂	Mpox ₂
62 Suspected case(s)	181 Suspected case(s)	16 Suspected case(s)
1 Confirmed case(s)	27 Confirmed case(s)	3 Confirmed case(s)
0 Death(s)	0 Death(s)	0 Death(s)
Acute Flaccid Paralysis (AFP) ₂	COVID-19 ₂	Diphtheria ₂
105 Suspected case(s)	43 Suspected case(s)	50 Suspected case(s)
0 Confirmed case(s)	0 Confirmed case(s)	41 Confirmed case(s)
0 Death(s)	0 Death(s)	1 Death(s)
National Sentinel influenza surveillance ₃		
42 Suspected case(s)		
2 Confirmed case(s)		

Information for this disease was retrieved from the Technical Working Group and Situation Reports of Nigerian Centre for Disease Control and Prevention

1. Case Fatality Rate (CFR) for this disease is reported for confirmed cases only.
2. CFR for this disease is reported for total cases i.e. suspected + confirmed.
3. Information for sentinel influenza was retrieved from the laboratory.

Lassa Fever

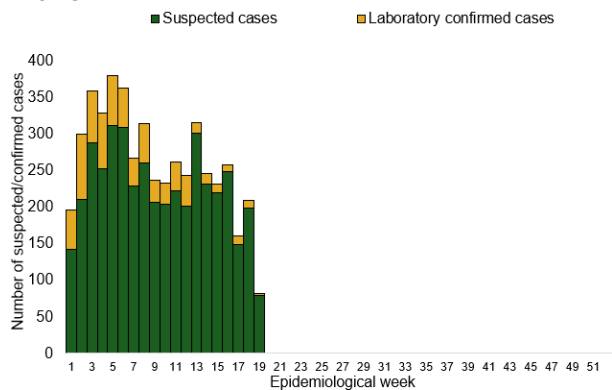
Table 1: Week 19

Suspected cases	Confirmed cases	Deaths	Number of States and LGAs affected
82	3	2	State: 7 LGA: 13

Table 2: Lassa Fever Year to date (week 1 – 19, 2024/2025)

Suspected cases		Confirmed cases		Deaths		CFR	
2024	2025	2024	2025	2024	2025	2024	2025
6226	4963	883	720	160	140	18.1%	19.4%

Figure 2: Trend of suspected and confirmed cases of Lassa Fever by epidemiological week, 2025.



*Figure 3: **Confirmed** cases of Lassa Fever by State, Nigeria, week 19, 2025.*



Key points

- There were 82 suspected cases of Lassa Fever reported from 13 LGAs in seven states. There were three laboratory confirmed cases and two deaths were recorded.

Actions

To date:

- National Lassa fever multi-partner, multi-sectoral Technical Working Group (TWG) continues to coordinate the response activities at all levels.
- Activated Multi-sectoral Incident Management System for Public Health Emergency Operation Centres (PHEOC) in affected States.
- Held a Multi-Sectoral Health Promotion, Communication, and Disease Prevention Capacity Building workshop on Risk Communication and Community Engagement in Cross River State supported by Nigeria Health Watch.
- Facilitated Lassa fever sensitization at Glo 99.1 FM, Ondo state.

Cerebrospinal Meningitis (CSM)

Table 4: Week 19

Suspected cases	Confirmed cases	Deaths	Number of States and LGAs affected
141	10	1	State: 10 LGA: 11

Table 5: CSM Year to date (week 1 – 19, 2024/2025)

Suspected cases		Confirmed cases		Deaths		CFR	
2024	2025	2024	2025	2024	2025	2024	2025
2868	3660	50	261	128	234	4.5%	6.4%

Figure 4: Trend of suspected and confirmed cases of CSM by epidemiological week, 2025.

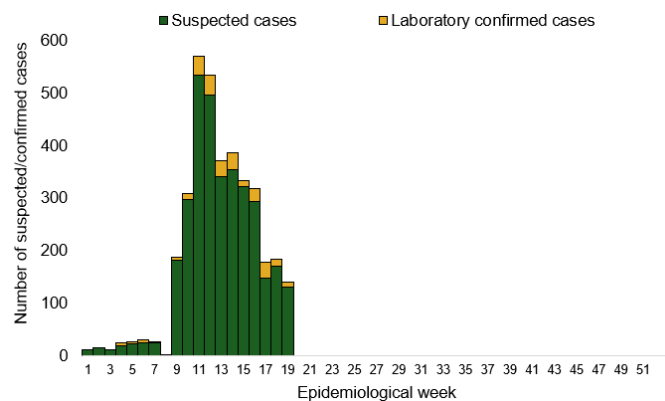
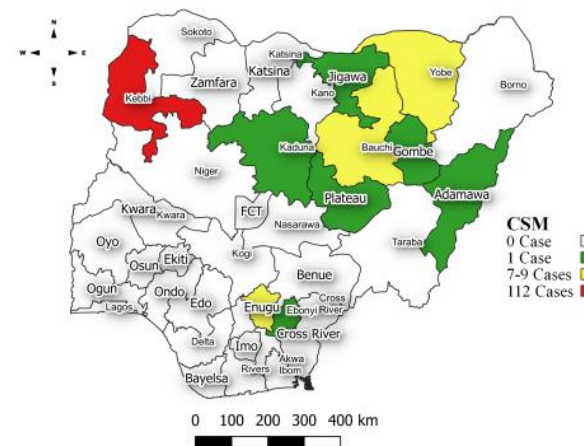


Figure 5: Suspected cases of CSM by State, Nigeria, week 19, 2025.



Key points

- There were 141 suspected cases of Cerebrospinal meningitis (CSM) reported from 11 LGAs in nine states. There were 10 laboratory confirmed cases and one death was recorded.

Actions

To date:

- National CSM multi-partner Technical Working Group (TWG) continues to coordinate activities across states.
- Weekly EOC meetings and response coordination.
- Ongoing surveillance in all states through routine Integrated Disease Surveillance and Response (IDSR) and Event- Based Surveillance (EBS).
- Providing offsite/onsite support to states and follow up for daily reporting and progress with response activities.

Yellow Fever

Table 6: Week 19

Suspected cases	Confirmed cases	Deaths	Number of States and LGAs affected
21	0	0	State: 9 LGA: 19

Table 7: Yellow Fever Year to date (week 1 – 19, 2024/2025)

Suspected cases		Confirmed cases		Deaths		CFR	
2024	2025	2024	2025	2024	2025	2024	2025
1148	976	6	2	1	0	0.1%	0%

Figure 6: Trend of suspected and confirmed cases of Yellow Fever by epidemiological week, 2025.

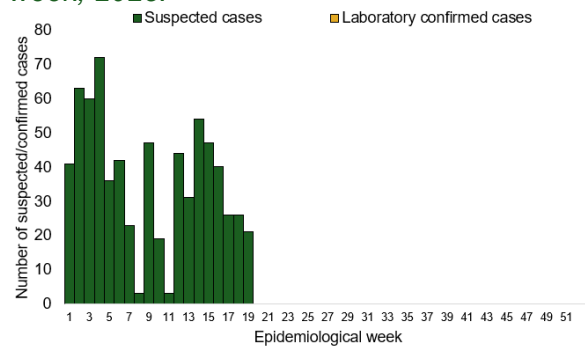
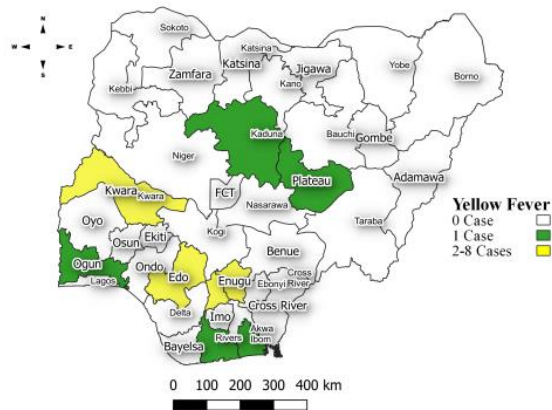


Figure 7: Suspected cases of Yellow Fever by State, Nigeria, week 19, 2025.



Key points

- There were 21 suspected cases of Yellow Fever (YF) reported from 19 LGAs in nine states. There was no laboratory confirmed case and no death was recorded.

Actions

To date:

- National YF multi-partner Technical Working Group (TWG) continues to coordinate activities across states.
- Monitoring and analysis of YF surveillance data across all states and FCT to guide response.
- Capacity building for tertiary health care workers on yellow fever case and other IDSR disease identification, management, and reporting.

Cholera

Table 8: Week 19

Suspected cases	Confirmed cases	Deaths	Number of States and LGAs affected
62	1	5	State: 9 LGA: 13

Table 9: Cholera Year to date (week 1 – 19, 2024/2025)

Suspected cases		Confirmed cases		Deaths		CFR	
2024	2025	2024	2025	2024	2025	2024	2025
1761	1780	4	44	25	56	1.4%	3.1%

Figure 8: Trend of suspected and confirmed cases of Cholera by epidemiological week, 2025.

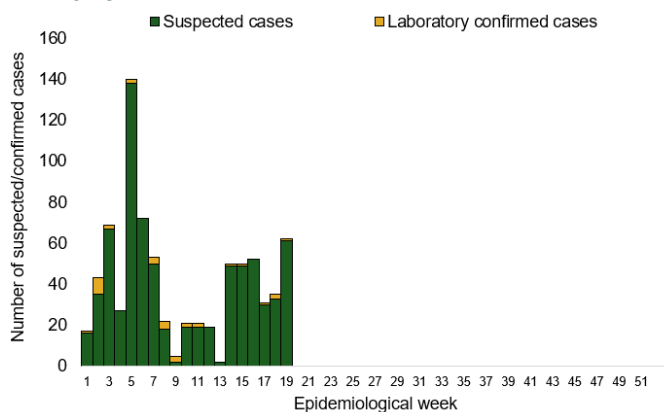
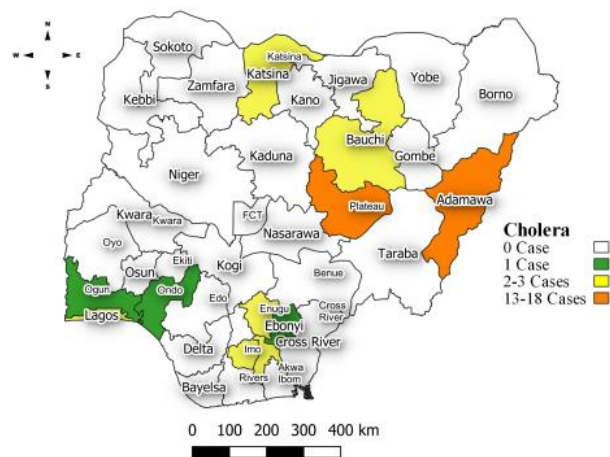


Figure 9: Trend of suspected and confirmed cases of Cholera, weeks 19, 2025.



Key points

- There were 62 suspected cases of Cholera reported from 13 LGAs in nine states. There was one laboratory confirmed case and five deaths were recorded.

Actions

To date:

- National Cholera Multi-Sectoral Technical Working Group (TWG) is monitoring all states and supporting affected states.
- Surveillance in all states through the routine Integrated Disease Surveillance and Response (IDSR) and Event Based Surveillance (EBS).
- Providing offsite/onsite support to states and follow up for daily reporting and progress with response activities.
- Essential response commodities are being distributed to all cholera affected states.
- Cholera jingles are being aired in English and local languages.

Measles

Table 10: Week 19

Suspected cases	Confirmed cases	Deaths	Number of States and LGAs affected
181	27	0	State: 25 LGA: 93

Table 11: Measles Year to date (week 1 – 19, 2024/2025)

Suspected cases		Confirmed cases		Deaths		CFR	
2024	2025	2024	2025	2024	2025	2024	2025
13545	6729	1840	2069	112	0	0.8%	0%

Figure 10: Trend of suspected and confirmed cases of Measles by epidemiological week, 2025.

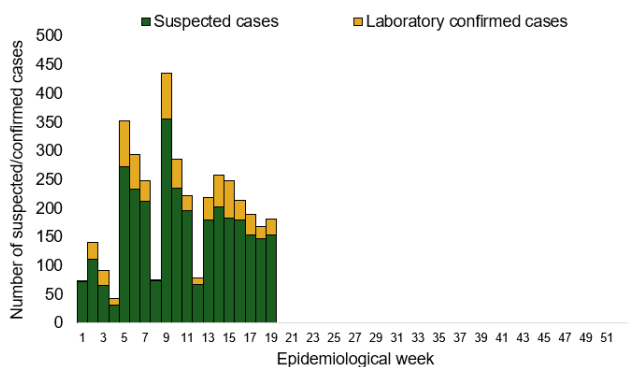
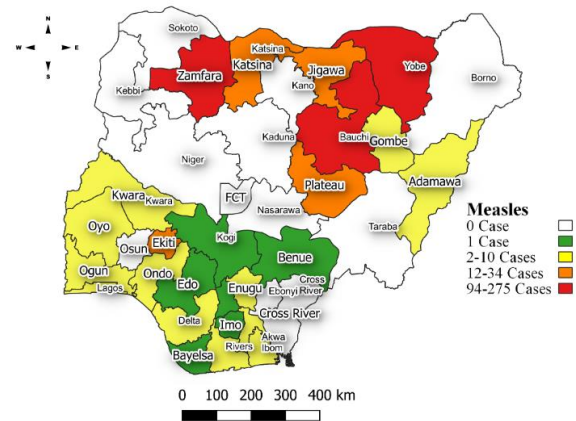


Figure 11: Suspected cases of Measles by State, Nigeria, week 19, 2025.



Key points

- There were 181 suspected cases of Measles reported from 93 LGAs in 25 states. There were 27 laboratory confirmed cases and no death was recorded.

Actions

To date:

- National Measles Multi-Sectoral Technical Working Group (TWG) is closely monitoring measles surveillance data and providing feedback to relevant agencies and development partners.
- Harmonisation of laboratory results from across the laboratories.
- Weekly feedback of key performance indicators to measles laboratories.

Mpox

Table 12: Week 19

Suspected cases	Confirmed cases	Deaths	Number of States and LGAs affected
16	3	0	State: 7 + FCT LGA: 12

Table 13: Year to date (week 1 – 19, 2024/2025)

Suspected cases		Confirmed cases		Deaths		CFR	
2024	2025	2024	2025	2024	2025	2024	2025
476	765	24	143	0	3	0%	3%

Figure 12: Trend of suspected and confirmed cases of Mpox by epidemiological week, 2025.

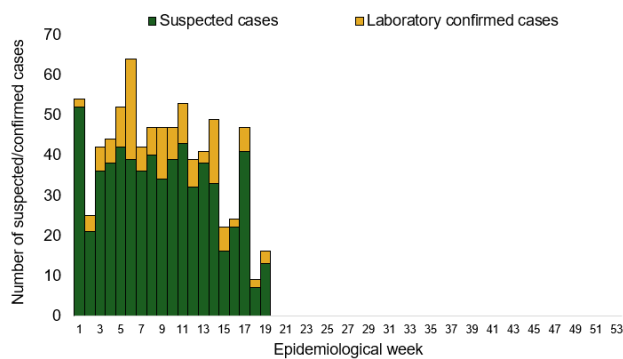
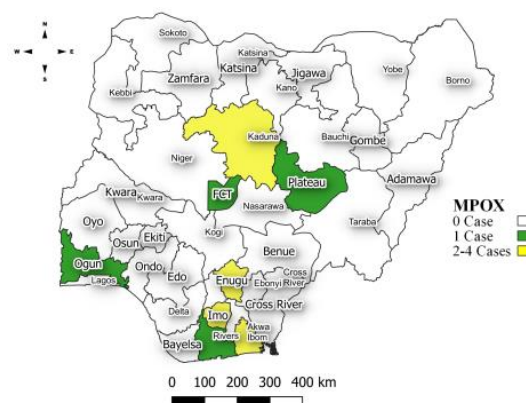


Figure 13: Suspected cases of Mpox by State, Nigeria, week 19, 2025.



Key points

- There were 16 suspected cases of Mpox reported from 12 LGAs in seven states and FCT. There were three laboratory confirmed cases and no death was recorded.

Actions

To date:

- National Monkeypox Technical Working Group (TWG) is monitoring activities in all states.
- Harmonisation of surveillance and laboratory data from across states and laboratories.
- Provision of off-site surveillance support to affected States.
- Weekly EOC meetings.

Acute Flaccid Paralysis (AFP)

Table 14: Week 19

Suspected cases	Confirmed cases	Deaths	Number of States and LGAs affected
105	0	0	State: 27 LGA: 105

Table 15: AFP Year to date (week 1 – 19, 2024/2025)

Suspected cases		Confirmed cases		Deaths		CFR	
2024	2025	2024	2025	2024	2025	2024	2025
2975	2193	0	0	0	0	0%	0%

Figure 14: Trend of suspected and confirmed cases of AFP by epidemiological week, 2025.

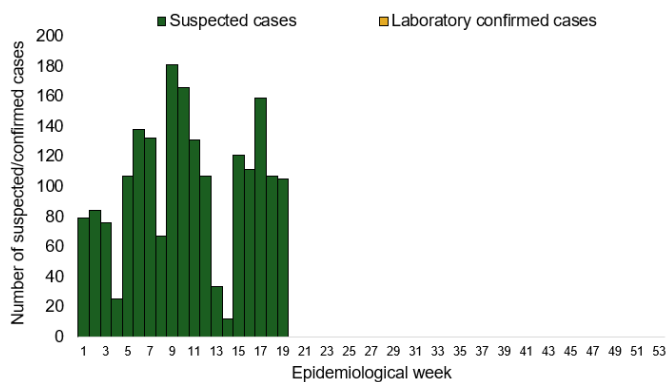
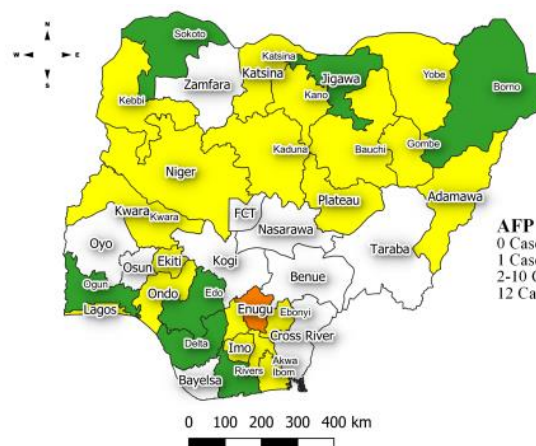


Figure 15: Suspected cases of AFP by State, Nigeria, week 19, 2025.



Key points

- There were 105 suspected cases of AFP reported from 105 LGAs in 27 states. There was no laboratory confirmed case and no death was recorded.

COVID-19

Table 16: Week 19

Suspected cases	Confirmed cases	Deaths	Number of States and LGAs affected
43	0	0	State: 3 + FCT LGA: 15

Table 17: Covid 19 Year to date (Week 1- 19, 2024/2025)

Suspected cases		Confirmed cases		Deaths		CFR	
2024	2025	2024	2025	2024	2025	2024	2025
789	1139	789	22	1	0	0.1%	0%

Figure 16: Trend of suspected and confirmed cases of Covid 19 by epidemiological week, 2025.

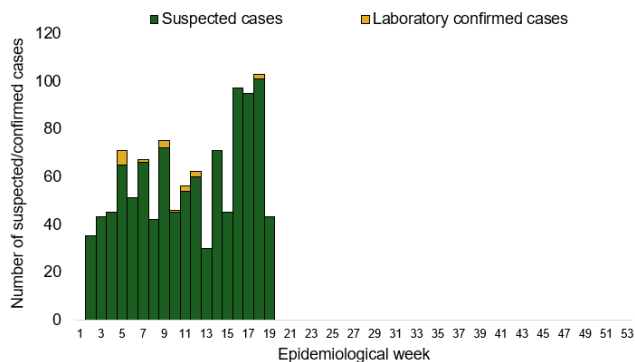
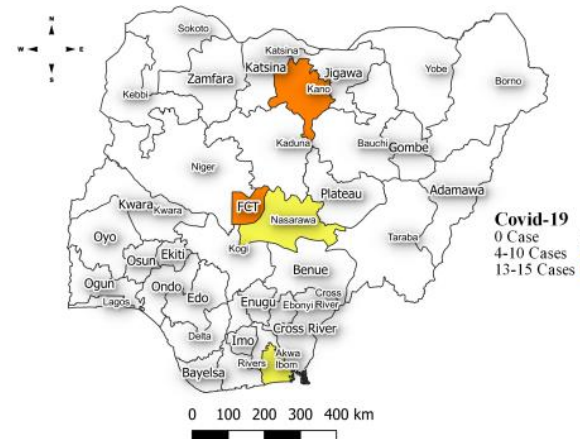


Figure 17: Suspected cases of Covid 19 by State, Nigeria, week 19, 2025.



Key points

- There were 43 suspected cases of Covid 19 reported from 15 LGAs in three states and FCT. There was no laboratory confirmed case and no death was recorded.

Actions

To date:

- National Covid 19 Technical Working Group (TWG) is monitoring activities in all states.
- Harmonisation of surveillance and laboratory data from across states and laboratories.
- Provision of off-site surveillance support to affected States.

Diphtheria

Table 18: Week 19

Suspected cases	Confirmed cases	Deaths	Number of States and LGAs affected
50	41	1	State: 5 LGA: 16

Table 19: Diphtheria Year to date (week 1 – 19, 2024/2025)

Suspected cases		Confirmed cases		Deaths		CFR	
2024	2025	2024	2025	2024	2025	2024	2025
9399	2281	5716	1657	150	100	1.6%	4.4%

Figure 18: Trend of suspected and confirmed cases of Diphtheria by epidemiological week, 2025.

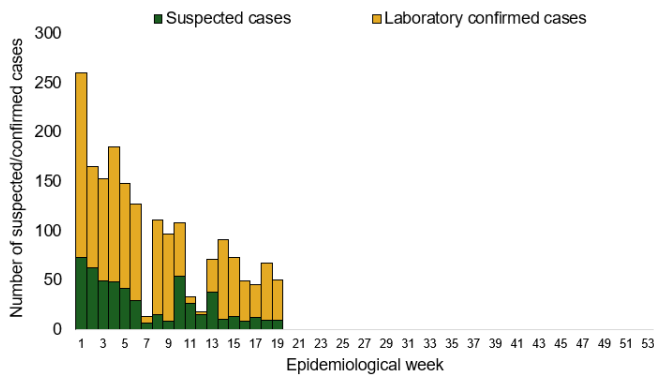
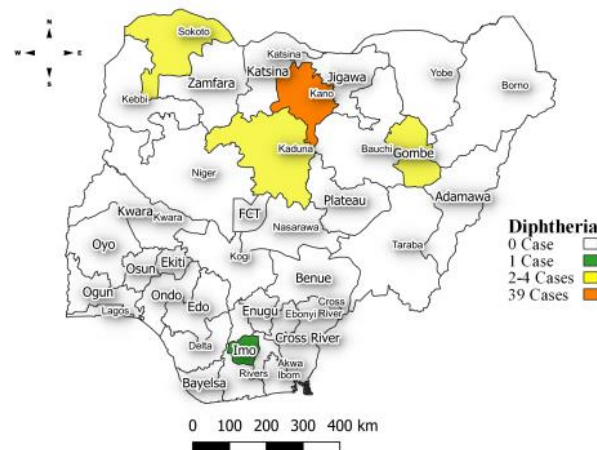


Figure 19: Suspected cases of Diphtheria by State, Nigeria, week 19, 2025.



Key points

- There were 50 suspected cases of Diphtheria reported from 16 LGAs in five states. There were 41 confirmed cases and one death was recorded.

Actions

To date:

- National Diphtheria Technical Working Group (TWG) is monitoring activities in all states.
- Capacity building of healthcare workers on diphtheria and other vaccine-preventable diseases.
- Engagement of healthcare workers on IPC and case management using the ECHO platform.
- Routine immunization services across all public health facilities.

National Influenza Sentinel Surveillance

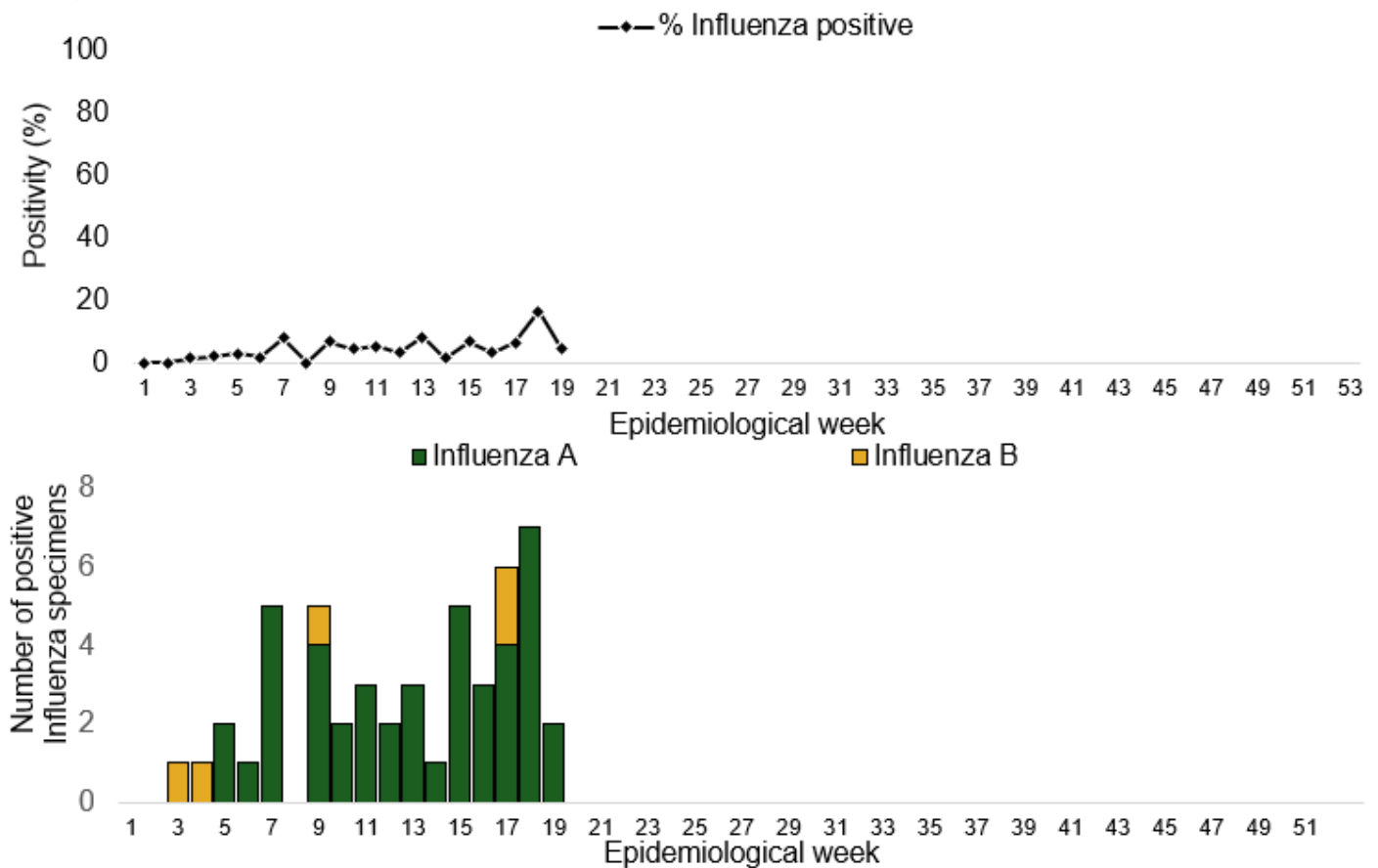
Table 20: Week 19

Suspected Cases	Confirmed Cases	Confirmed Case by type	
		Influenza A	Influenza B
42	2	2	0

Table 21: Year to date (week 1 – 19)

Suspected cases	Total Confirmed Cases	Confirmed cases by type	
		Influenza A	Influenza B
1232	74	68	6

Figure 20: Number of influenza positive specimens by type and percentage positive by epidemiological week, 2025.



Event Based Surveillance (EBS)

Week 19

Key points

Epi Week 19

- 100 calls were successfully routed to agents and answered.
- 1250 articles scanned through Epidemic Intelligence from Open Sources (EIOS) and other manual sources.
- From the calls, EIOS and other manual sources, one signal (Anambra police launch another investigation as 4 children die after eating poisoned food) was picked and escalated to the corresponding TWG.

Cumulatively, from week 1 - 19

- 2271 calls were successfully routed to agents and answered.
- 33 Signals were picked and escalated.

Figure 22: Number of signals/events per week, 2025.

