



NIGERIA CENTRE FOR DISEASE CONTROL AND PREVENTION

Nigeria Centre for Disease Control and Prevention

Protecting the health of Nigerians

# Weekly Epidemiological Report

Week 18<sup>th</sup>: 28<sup>th</sup> April – 4<sup>th</sup> May 2025

## Summary of Incidents

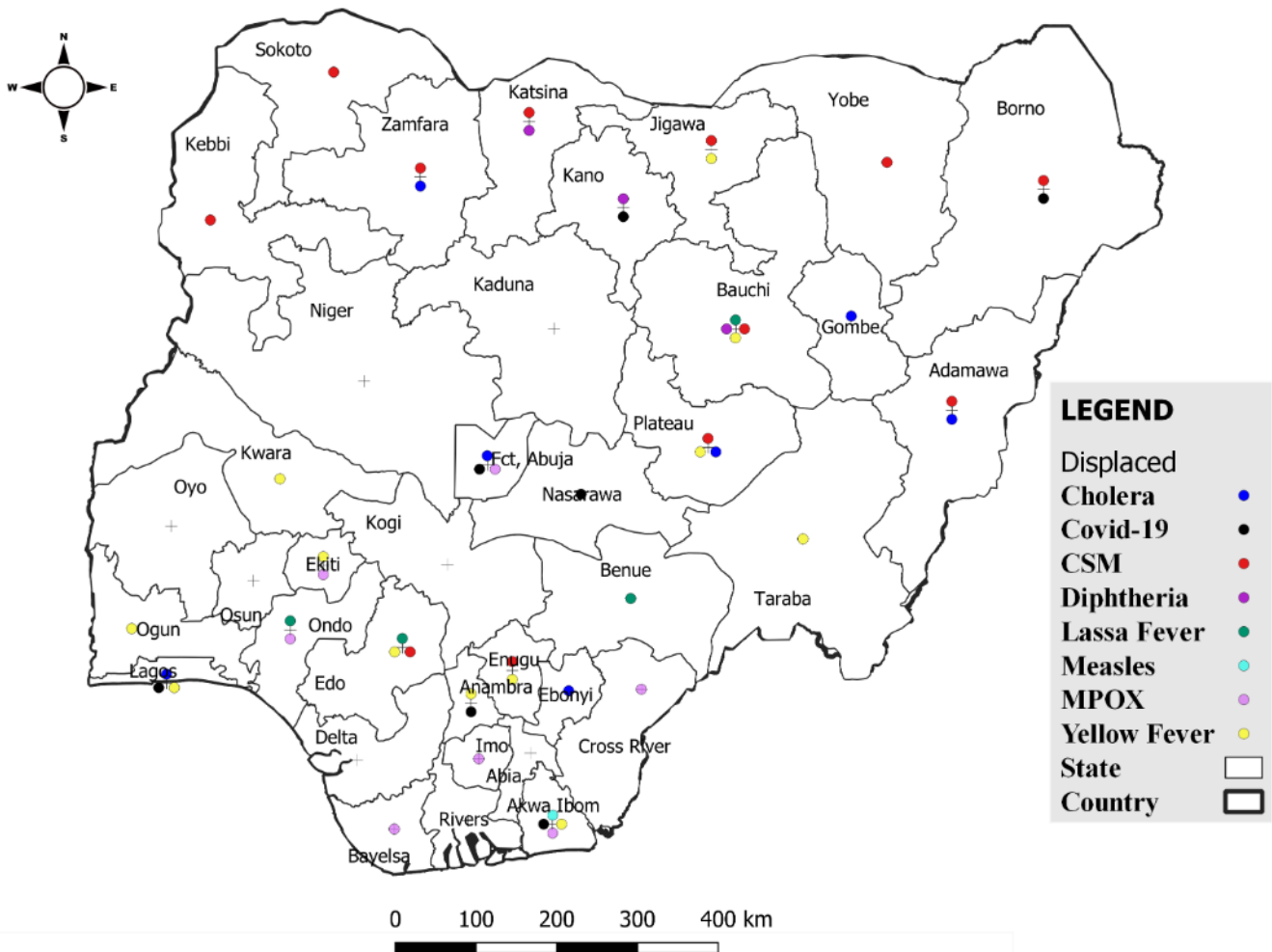
### Ongoing incidents

5

The Ongoing incidents within the reporting week are Lassa Fever, Cholera, Mpx, CSM and Diphtheria.

\*Ongoing incidents are defined as confirmed cases where a national EOC or equivalent has been activated.

Figure 1: Priority Diseases under surveillance in Nigeria, week 18, 2025.



## Summary of Diseases

**Table 1: Week 18 (28<sup>th</sup> April – 4<sup>th</sup> May 2025)**

<b>Lassa Fever<sub>1</sub></b>	<b>Cerebrospinal Meningitis (CSM)<sub>2</sub></b>	<b>Yellow Fever<sub>2</sub></b>
209 Suspected case(s)	183 Suspected case(s)	26 Suspected case(s)
10 Confirmed case(s)	13 Confirmed case(s)	0 Confirmed case(s)
3 Death(s)	3 Death(s)	0 Death(s)
<b>Cholera<sub>2</sub></b>	<b>Measles<sub>2</sub></b>	<b>Mpox<sub>2</sub></b>
35 Suspected case(s)	168 Suspected case(s)	9 Suspected case(s)
2 Confirmed case(s)	21 Confirmed case(s)	2 Confirmed case(s)
1 Death(s)	0 Death(s)	0 Death(s)
<b>Acute Flaccid Paralysis (AFP)<sub>2</sub></b>	<b>COVID-19<sub>2</sub></b>	<b>Diphtheria<sub>2</sub></b>
107 Suspected case(s)	103 Suspected case(s)	67 Suspected case(s)
0 Confirmed case(s)	2 Confirmed case(s)	58 Confirmed case(s)
0 Death(s)	0 Death(s)	2 Death(s)
<b>National Sentinel influenza surveillance<sub>3</sub></b>		
103 Suspected case(s)		
7 Confirmed case(s)		

Information for this disease was retrieved from the Technical Working Group and Situation Reports of Nigerian Centre for Disease Control and Prevention

1. Case Fatality Rate (CFR) for this disease is reported for confirmed cases only.
2. CFR for this disease is reported for total cases i.e. suspected + confirmed.
3. Information for sentinel influenza was retrieved from the laboratory.

## Lassa Fever

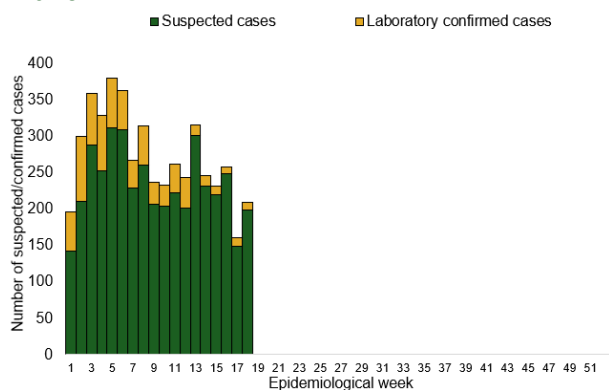
**Table 1: Week 18**

Suspected cases	Confirmed cases	Deaths	Number of States and LGAs affected
209	10	3	State: 10 LGA: 18

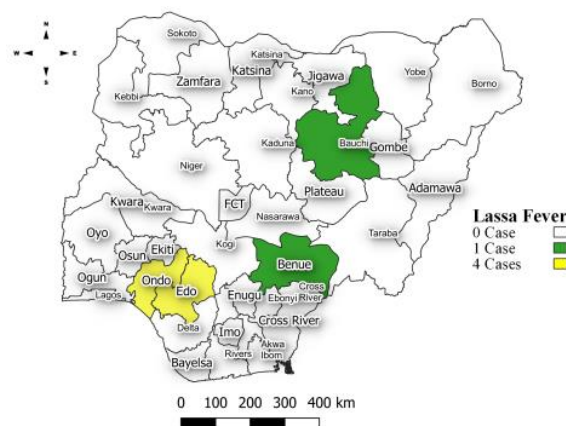
**Table 2: Lassa Fever Year to date (week 1 – 18, 2024/2025)**

Suspected cases		Confirmed cases		Deaths		CFR	
2024	2025	2024	2025	2024	2025	2024	2025
6106	4881	869	717	156	138	18%	19.2%

*Figure 2: Trend of suspected and confirmed cases of Lassa Fever by epidemiological week, 2025.*



*Figure 3: **Confirmed** cases of Lassa Fever by State, Nigeria, week 18, 2025.*



### Key points

- There were 209 suspected cases of Lassa Fever reported from 18 LGAs in 10 states. There were 10 laboratory confirmed cases and three deaths were recorded.

### Actions

#### To date:

- National Lassa fever multi-partner, multi-sectoral Technical Working Group (TWG) continues to coordinate the response activities at all levels.
- Deployed National Rapid Response Teams (NRRT) to 10 states to support onsite control and management efforts using a One Health approach.
- Participated in the World Hand Hygiene Day celebrated across all Orange Network facilities.
- Participated in the fourth monthly webinar series on Lassa fever Clinical Management (IPC Programming in HFs).

## Cerebrospinal Meningitis (CSM)

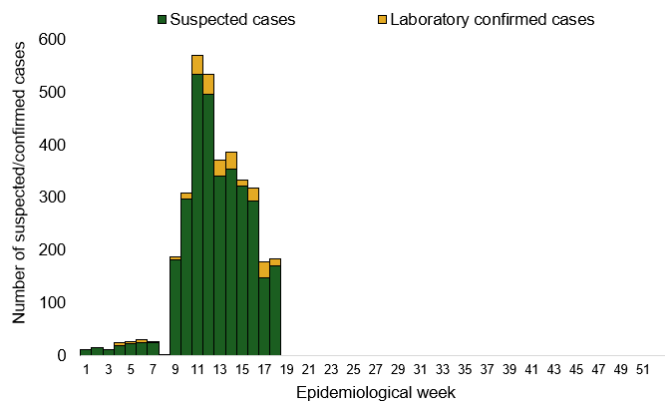
**Table 4: Week 18**

Suspected cases	Confirmed cases	Deaths	Number of States and LGAs affected
183	13	3	State: 12 LGA: 15

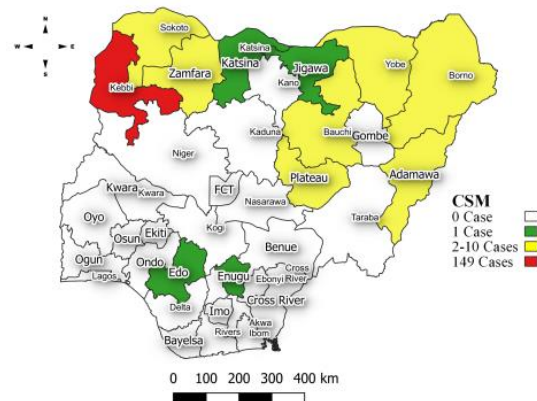
**Table 5: CSM Year to date (week 1 – 18, 2024/2025)**

Suspected cases		Confirmed cases		Deaths		CFR	
2024	2025	2024	2025	2024	2025	2024	2025
2828	3525	50	251	128	233	4.5%	6.6%

*Figure 4: Trend of suspected and confirmed cases of CSM by epidemiological week, 2025.*



*Figure 5: Suspected cases of CSM by State, Nigeria, week 18, 2025.*



### Key points

- There were 183 suspected cases of Cerebrospinal meningitis (CSM) reported from 15 LGAs in 12 states. There were 13 laboratory confirmed cases and three deaths were recorded.

### Actions

#### To date:

- National CSM multi-partner Technical Working Group (TWG) continues to coordinate activities across states.
- Weekly EOC meetings with hot spot states in attendance.
- Distribution of essential response commodities to all CSM affected states.
- Risk communication activities across high-risk states.
- CSM jingles are being aired in English and local languages in all affected states.

## Yellow Fever

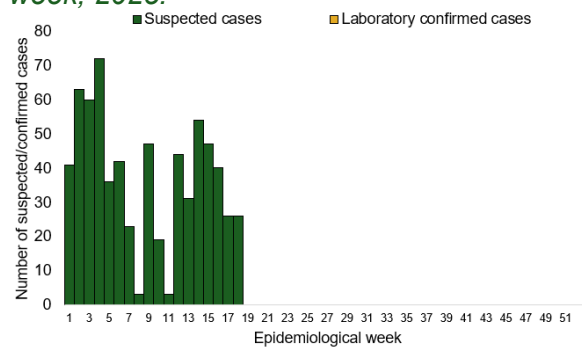
**Table 6: Week 18**

Suspected cases	Confirmed cases	Deaths	Number of States and LGAs affected
26	0	0	State: 12 LGA: 18

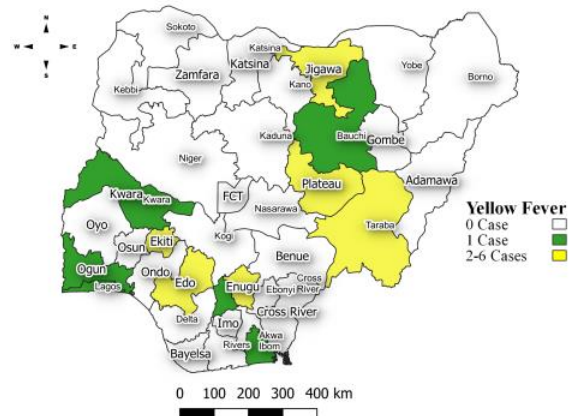
**Table 7: Yellow Fever Year to date (week 1 – 18, 2024/2025)**

Suspected cases		Confirmed cases		Deaths		CFR	
2024	2025	2024	2025	2024	2025	2024	2025
1078	955	4	2	1	0	0.1%	0%

*Figure 6: Trend of suspected and confirmed cases of Yellow Fever by epidemiological week, 2025.*



*Figure 7: Suspected cases of Yellow Fever by State, Nigeria, week 18, 2025.*



### Key points

- There were 26 suspected cases of Yellow Fever (YF) reported from 18 LGAs in 12 states. There was no laboratory confirmed case and no death was recorded.

### Actions

#### To date:

- National YF multi-partner Technical Working Group (TWG) continues to coordinate activities across states.
- Updating cases in the Surveillance Outbreak Response Management and Analysis System (SORMAS) platform.
- Coordination of yellow fever sample management and transportation from all states to the regional reference laboratories.
- Regular testing of yellow fever samples using the Yellow fever MAC HD testing protocol in reference Laboratories and rt PCR and NRL Gaduwa.

## Cholera

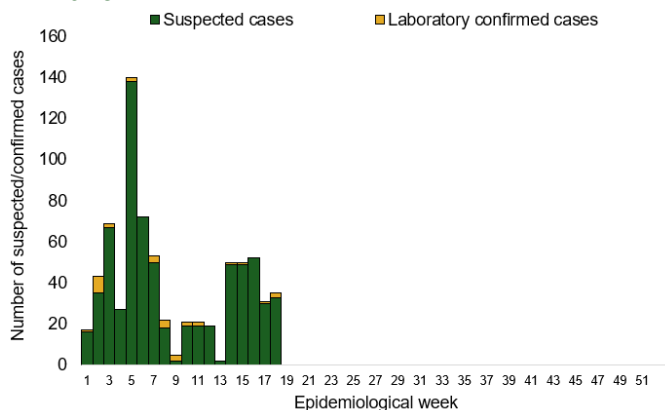
**Table 8: Week 18**

Suspected cases	Confirmed cases	Deaths	Number of States and LGAs affected
35	2	1	State: 6 + FCT LGA: 10

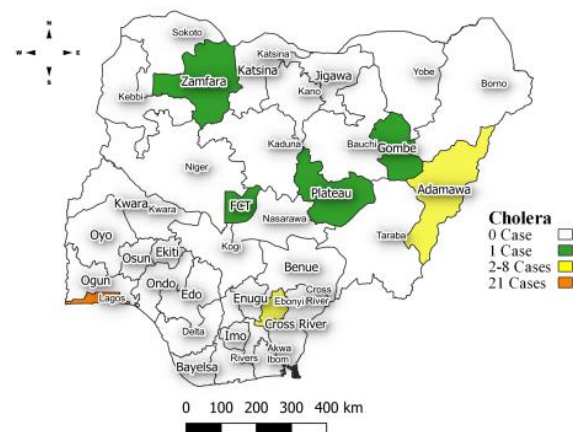
**Table 9: Cholera Year to date (week 1 – 18, 2024/2025)**

Suspected cases		Confirmed cases		Deaths		CFR	
2024	2025	2024	2025	2024	2025	2024	2025
1739	1718	4	43	25	51	1.4%	3%

*Figure 8: Trend of suspected and confirmed cases of Cholera by epidemiological week, 2025.*



*Figure 9: Trend of suspected and confirmed cases of Cholera, weeks 18, 2025.*



### Key points

- There were 35 suspected cases of Cholera reported from 10 LGAs in six states and FCT. There were two laboratory confirmed cases and one death was recorded.

### Actions

#### To date:

- National Cholera Multi-Sectoral Technical Working Group (TWG) is monitoring all states and supporting affected states.
- Hygiene promotion, provision of safe water, water chlorination, household disinfection and sensitization on dangers of open defecation ongoing in high-risk communities by WASH sector partners and Community Health Volunteers in the affected states.
- Continuous construction of sanitation and hygiene facilities with boreholes in cholera hotspots.
- Conducted WASH Sector review workshop.

## Measles

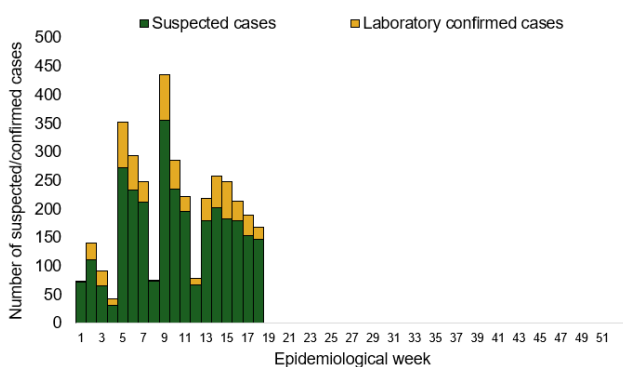
**Table 10: Week 18**

Suspected cases	Confirmed cases	Deaths	Number of States and LGAs affected
168	21	0	State: 30 LGA: 97

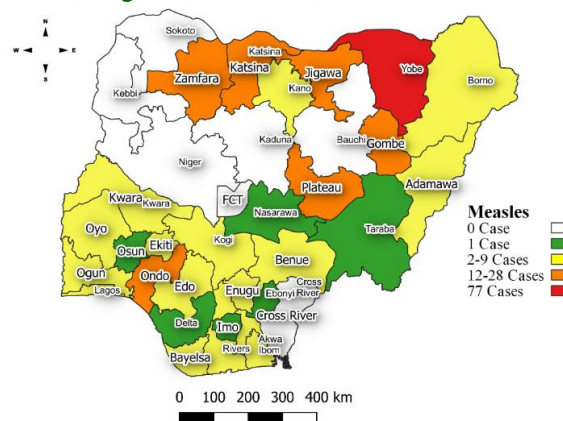
**Table 11: Measles Year to date (week 1 – 18, 2024/2025)**

Suspected cases		Confirmed cases		Deaths		CFR	
2024	2025	2024	2025	2024	2025	2024	2025
12904	6548	1787	2042	110	0	0.8%	0%

*Figure 10: Trend of suspected and confirmed cases of Measles by epidemiological week, 2025.*



*Figure 11: Suspected cases of Measles by State, Nigeria, week 18, 2025.*



### Key points

- There were 168 suspected cases of Measles reported from 97 LGAs in 30 states. There were 21 laboratory confirmed cases and no death was recorded.

### Actions

#### To date:

- National Measles Multi-Sectoral Technical Working Group (TWG) is closely monitoring measles surveillance data and providing feedback to relevant agencies and development partners.
- Testing of samples ongoing in the eight Reference Laboratories across the country.
- Weekly harmonisation of laboratory results from across the laboratories ongoing.
- Weekly feedback of key performance indicators to measles laboratories.

## Mpox

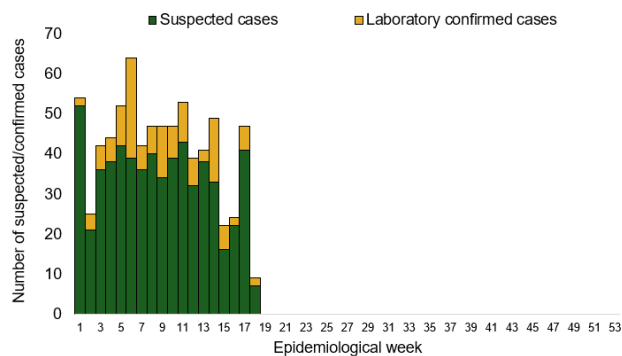
**Table 12: Week 18**

Suspected cases	Confirmed cases	Deaths	Number of States and LGAs affected
9	2	0	State: 6 + FCT LGA: 8

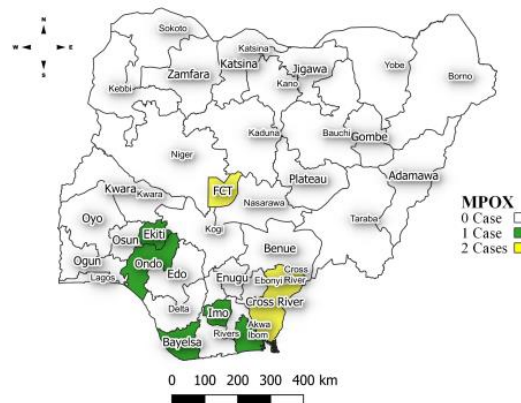
**Table 13: Year to date (week 1 – 18, 2024/2025)**

Suspected cases		Confirmed cases		Deaths		CFR	
2024	2025	2024	2025	2024	2025	2024	2025
451	749	24	140	0	3	0%	0.4%

*Figure 12: Trend of suspected and confirmed cases of Mpox by epidemiological week, 2025.*



*Figure 13: Suspected cases of Mpox by State, Nigeria, week 18, 2025.*



### Key points

- There were nine suspected cases of Mpox reported from eight LGAs in six states and FCT. There were two laboratory confirmed cases and no death was recorded.

### Actions

#### To date:

- National Monkeypox Technical Working Group (TWG) is monitoring activities in all states.
- Harmonisation of surveillance and laboratory data from across states and laboratories.
- Provision of off-site surveillance support to affected States.
- Weekly EOC meetings.

## Acute Flaccid Paralysis (AFP)

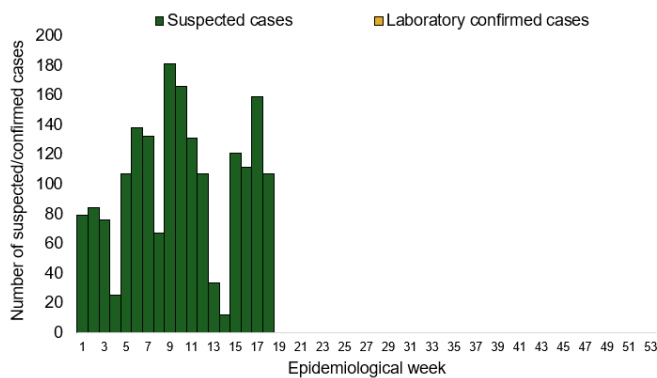
**Table 14: Week 18**

Suspected cases	Confirmed cases	Deaths	Number of States and LGAs affected
107	0	0	State: 27 + FCT LGA: 107

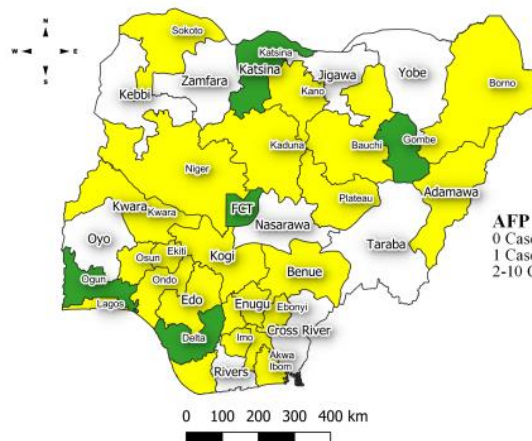
**Table 15: AFP Year to date (week 1 – 18, 2024/2025)**

Suspected cases		Confirmed cases		Deaths		CFR	
2024	2025	2024	2025	2024	2025	2024	2025
2858	2088	0	0	0	0	0%	0%

*Figure 14: Trend of suspected and confirmed cases of AFP by epidemiological week, 2025.*



*Figure 15: Suspected cases of AFP by State, Nigeria, week 18, 2025.*



### Key points

- There were 107 suspected cases of AFP reported from 107 LGAs in 27 states and FCT. There was no laboratory confirmed case and no death was recorded.

## COVID-19

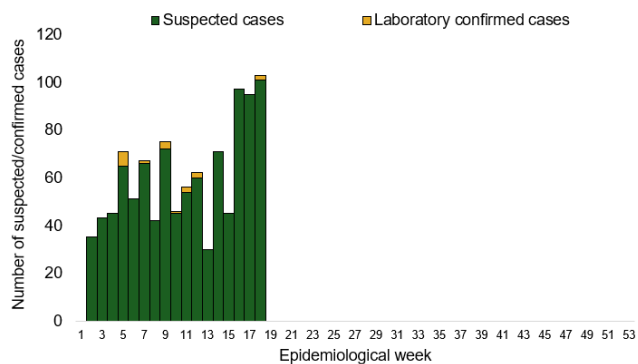
**Table 16: Week 18**

Suspected cases	Confirmed cases	Deaths	Number of States and LGAs affected
103	2	0	State: 6 + FCT LGA: 37

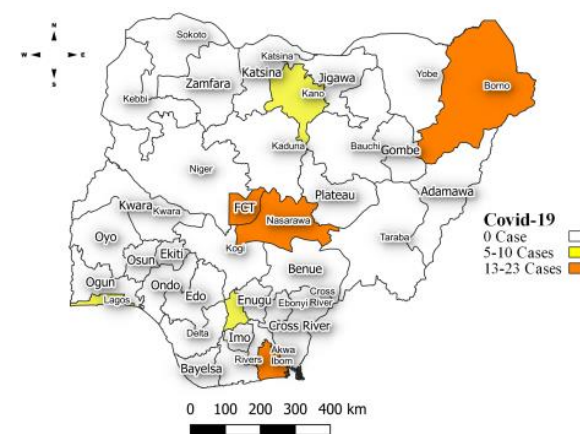
**Table 17: Covid 19 Year to date (Week 1- 18, 2024/2025)**

Suspected cases		Confirmed cases		Deaths		CFR	
2024	2025	2024	2025	2024	2025	2024	2025
782	1096	782	22	0	0	0%	0%

*Figure 16: Trend of suspected and confirmed cases of Covid 19 by epidemiological week, 2025.*



*Figure 17: Suspected cases of Covid 19 by State, Nigeria, week 18, 2025.*



### Key points

- There were 103 suspected cases of Covid 19 reported from 37 LGAs in six states and FCT. There were two laboratory confirmed case and no death was recorded.

### Actions

#### To date:

- National Covid 19 Technical Working Group (TWG) is monitoring activities in all states.
- Harmonisation of surveillance and laboratory data from across states and laboratories.
- Provision of off-site surveillance support to affected States.

## Diphtheria

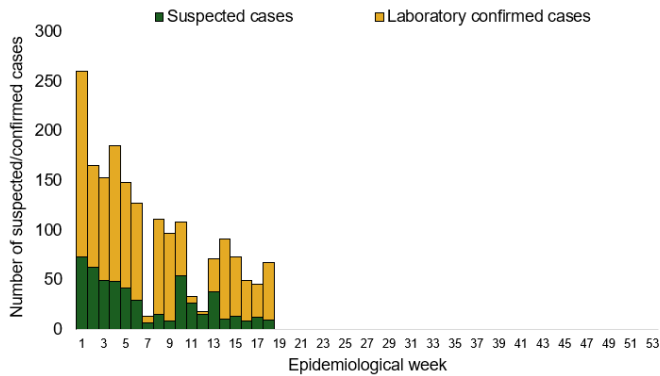
**Table 18: Week 18**

Suspected cases	Confirmed cases	Deaths	Number of States and LGAs affected
67	58	2	State: 6 LGA: 14

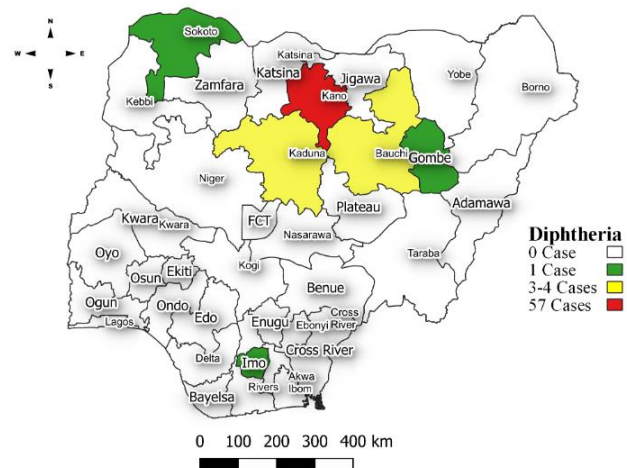
**Table 19: Diphtheria Year to date (week 1 – 18, 2024/2025)**

Suspected cases		Confirmed cases		Deaths		CFR	
2024	2025	2024	2025	2024	2025	2024	2025
9146	2231	5786	1616	147	99	1.6%	4.4%

*Figure 18: Trend of suspected and confirmed cases of Diphtheria by epidemiological week, 2025.*



*Figure 19: Suspected cases of Diphtheria by State, Nigeria, week 18, 2025.*



### Key points

- There were 67 suspected cases of Diphtheria reported from 14 LGAs in six states. There were 58 confirmed cases and two deaths were recorded.

### Actions

#### To date:

- National Diphtheria Technical Working Group (TWG) is monitoring activities in all states.
- Provide technical and off-site support to states on case identification, reporting, and response, especially to non-reporting and low-burden states.
- Continued engagement with key influencers (Religious and Traditional) in affected states and the Community by leveraging on National traditional and religious leaders' platform.
- Routine immunization services across all public health facilities.
- Reactive vaccination in high-burden states.

## National Influenza Sentinel Surveillance

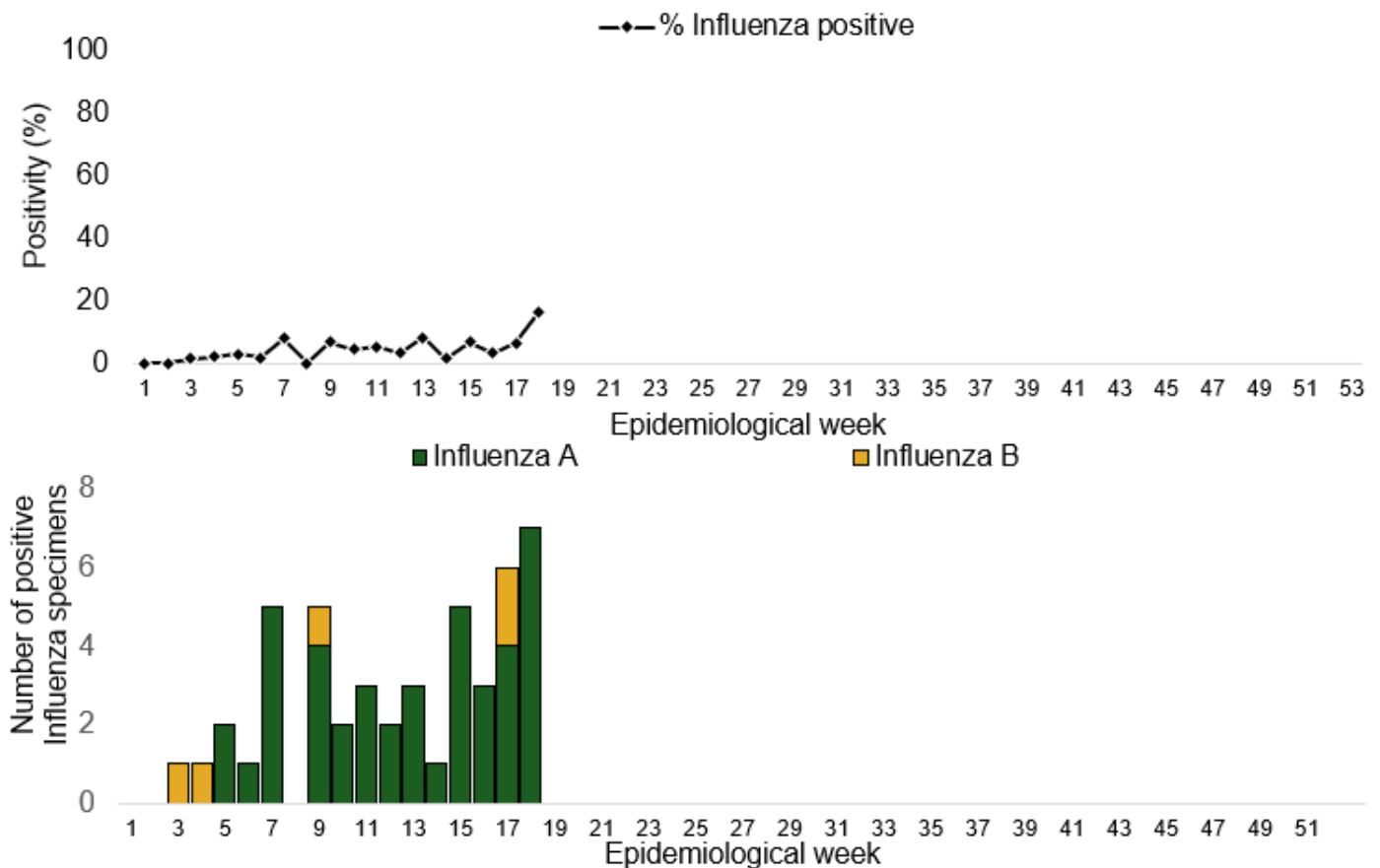
**Table 20: Week 18**

Suspected Cases	Confirmed Cases	Confirmed Case by type	
		Influenza A	Influenza B
103	7	7	0

**Table 21: Year to date (week 1 – 18)**

Suspected cases	Total Confirmed Cases	Confirmed cases by type	
		Influenza A	Influenza B
1190	72	66	6

*Figure 20: Number of influenza positive specimens by type and percentage positive by epidemiological week, 2025.*



## Event Based Surveillance (EBS)

## Week 18

### Key points

#### Epi Week 18

- 129 calls were successfully routed to agents and answered.
- 1500 articles scanned through Epidemic Intelligence from Open Sources (EIOS) and other manual sources.
- From the calls, EIOS and other manual sources, four signals were picked and escalated to the corresponding TWG.
  - Suspected Measles cases in Enugu and Kaduna states
  - Suspected Mpox case in FCT
  - Nimet flood warning across Nigerian states

#### Cumulatively, from week 1 - 18

- 2171 calls were successfully routed to agents and answered.
- 32 Signals were picked and escalated.

Figure 22: Number of signals/events per week, 2025.

