



NIGERIA CENTRE FOR DISEASE  
CONTROL AND PREVENTION

**Nigeria Centre for Disease Control and Prevention**

*Protecting the health of Nigerians*

## **Weekly Epidemiological Report**

**Week 16: 14<sup>th</sup> – 20<sup>th</sup> April 2025**

### **Highlight of the week**

#### **NCDC'S HEALTH TORI DRAMA SERIES – USING STORYTELLING TO DRIVE PUBLIC HEALTH ACTION**



The Nigeria Centre for Disease Control and Prevention (NCDC) is leveraging storytelling through its innovative radio-style drama series, *Health Tori*, to promote public awareness of infectious diseases. Hosted on the NCDC YouTube channel, the series addresses diseases such as Lassa fever and cerebrospinal meningitis, using relatable characters and everyday scenarios to simplify complex health messages.

By blending education with entertainment, *Health Tori* encourages early care-seeking, dispels stigma, and highlights the roles of healthcare workers, families, and community leaders in outbreak prevention and response. This approach supports risk communication efforts by making public health messaging more accessible and engaging.

NCDC plans to expand the series to include other priority diseases and deepen community-level engagement through partnerships and wider dissemination.

<https://www.youtube.com/c/NCDCgov/playlists>.

## Summary of Incidents

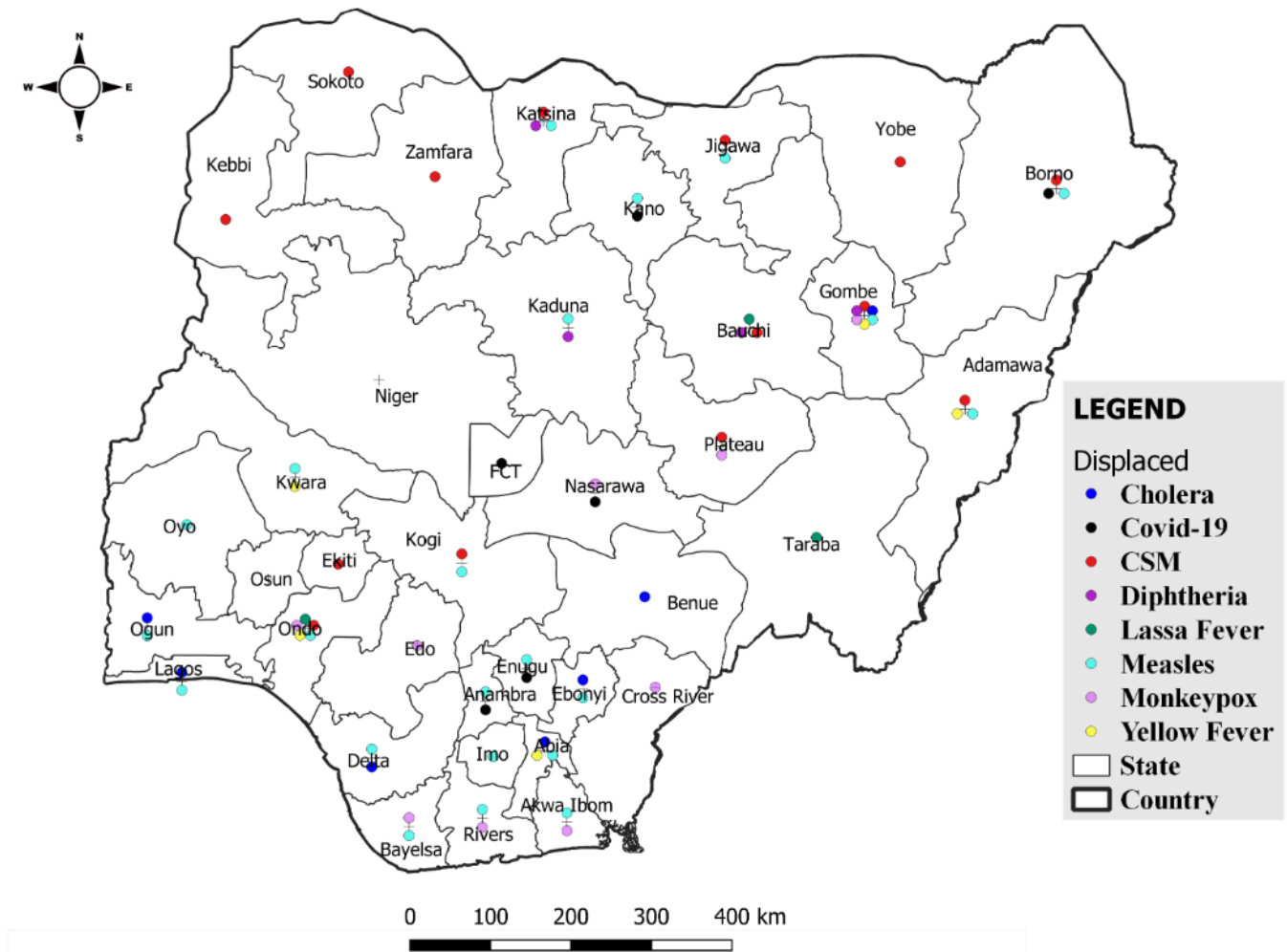
**Ongoing incidents**

5

The Ongoing incidents within the reporting week are Lassa Fever, Cholera, Mpox, CSM and Diphtheria.

\*Ongoing incidents are defined as confirmed cases where a national EOC or equivalent has been activated.

Figure 1: Priority Diseases under surveillance in Nigeria, week 16, 2025.



## Summary of Diseases

Table 1: Week 16 (14<sup>th</sup> – 20<sup>th</sup> April 2025)

Lassa Fever <sub>1</sub>	Cerebrospinal Meningitis (CSM) <sub>2</sub>	Yellow Fever <sub>2</sub>
258 Suspected case(s)	319 Suspected case(s)	40 Suspected case(s)
10 Confirmed case(s)	25 Confirmed case(s)	0 Confirmed case(s)
3 Death(s)	13 Death(s)	0 Death(s)
Cholera <sub>2</sub>	Measles <sub>2</sub>	Mpox <sub>2</sub>
52 Suspected case(s)	213 Suspected case(s)	24 Suspected case(s)
0 Confirmed case(s)	33 Confirmed case(s)	2 Confirmed case(s)
2 Death(s)	0 Death(s)	0 Death(s)
Acute Flaccid Paralysis (AFP) <sub>2</sub>	COVID-19 <sub>2</sub>	Diphtheria <sub>2</sub>
111 Suspected case(s)	97 Suspected case(s)	49 Suspected case(s)
0 Confirmed case(s)	0 Confirmed case(s)	41 Confirmed case(s)
0 Death(s)	0 Death(s)	6 Death(s)
National Sentinel influenza surveillance <sub>3</sub>		
97 Suspected case(s)		
3 Confirmed case(s)		

Information for this disease was retrieved from the Technical Working Group and Situation Reports of Nigerian Centre for Disease Control and Prevention

1. Case Fatality Rate (CFR) for this disease is reported for confirmed cases only.
2. CFR for this disease is reported for total cases i.e. suspected + confirmed.
3. Information for sentinel influenza was retrieved from the laboratory.

## Lassa Fever

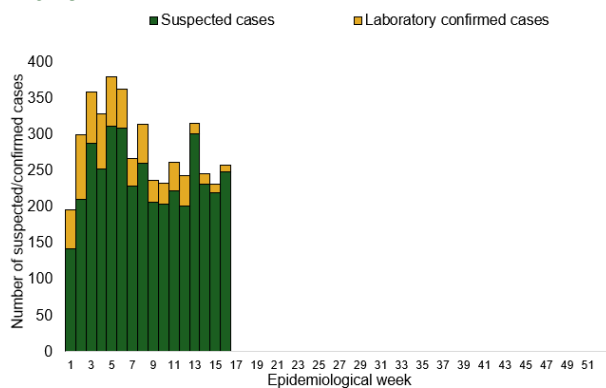
**Table 1: Week 16**

Suspected cases	Confirmed cases	Deaths	Number of States and LGAs affected
258	10	3	State: 10 LGA: 15

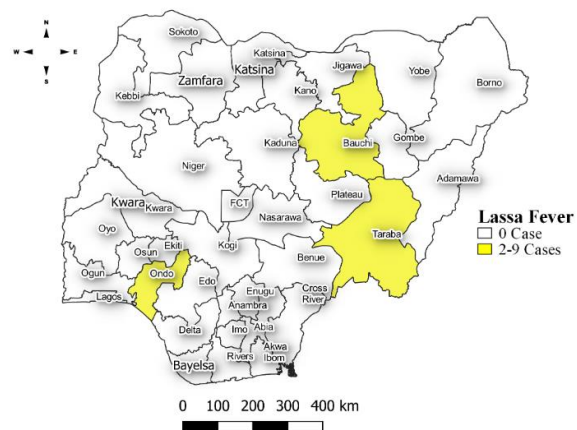
**Table 2: Lassa Fever Year to date (week 1 – 16, 2024/2025)**

Suspected cases		Confirmed cases		Deaths		CFR	
2024	2025	2024	2025	2024	2025	2024	2025
5828	4512	843	696	155	132	18.4%	19%

*Figure 2: Trend of suspected and confirmed cases of Lassa Fever by epidemiological week, 2025.*



*Figure 3: **Confirmed** cases of Lassa Fever by State, Nigeria, week 16, 2025.*



### Key points

- There were 258 suspected cases of Lassa Fever reported from 15 LGAs in 10 states. There were 10 laboratory confirmed cases and three deaths were recorded.

### Actions

#### To date:

- National Lassa fever multi-partner, multi-sectoral Technical Working Group (TWG) continues to coordinate the response activities at all levels.
- Participated in the LF vaccine development task force meeting.
- Conducted the third Monthly Webinar Series on Lassa fever Clinical Management.

## Cerebrospinal Meningitis (CSM)

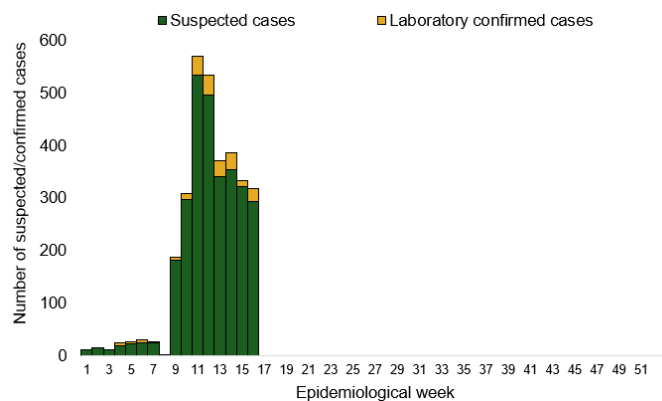
**Table 4: Week 16**

Suspected cases	Confirmed cases	Deaths	Number of States and LGAs affected
319	25	13	State: 14 LGA: 38

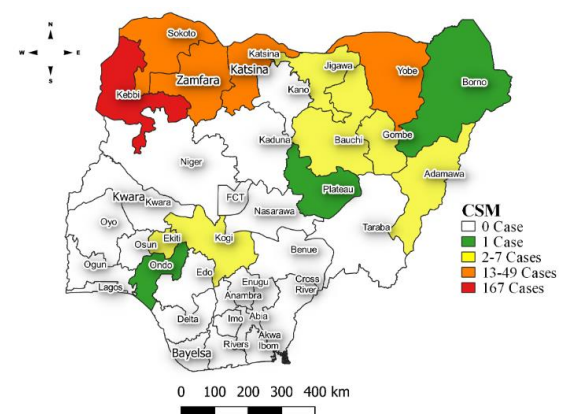
**Table 5: CSM Year to date (week 1 – 16, 2024/2025)**

Suspected cases		Confirmed cases		Deaths		CFR	
2024	2025	2024	2025	2024	2025	2024	2025
2620	3164	48	208	126	226	4.8%	7.1%

*Figure 4: Trend of suspected and confirmed cases of CSM by epidemiological week, 2025.*



*Figure 5: Suspected cases of CSM by State, Nigeria, week 16, 2025.*



### Key points

- There were 319 suspected cases of Cerebrospinal meningitis (CSM) reported from 38 LGAs in 14 states. There were 25 laboratory confirmed cases and 13 deaths were recorded.

### Actions

#### To date:

- National CSM multi-partner Technical Working Group (TWG) continues to coordinate activities across states.
- Implementation of targeted risk communication activities across high-risk states.
- CSM advisory developed and circulated across high-risk states.
- Multi-sectoral state-level Emergency Operations Centre (EOC) was activated in Jigawa, Yobe, Gombe, Katsina, Kebbi and Sokoto states.

## Yellow Fever

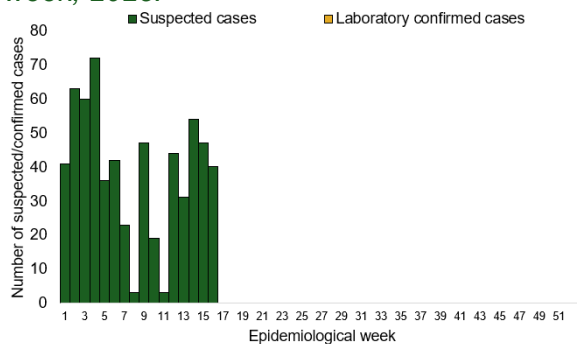
**Table 6: Week 16**

Suspected cases	Confirmed cases	Deaths	Number of States and LGAs affected
40	0	0	State: 19 LGA: 33

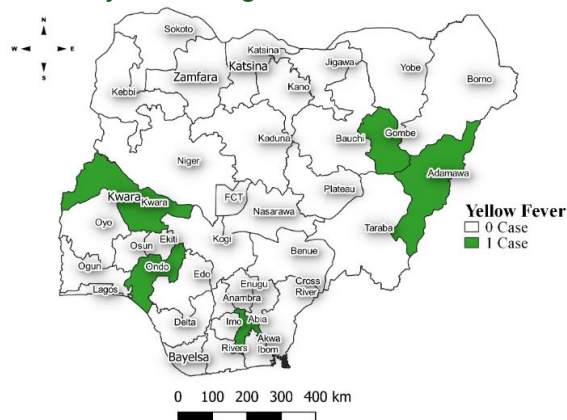
**Table 7: Yellow Fever Year to date (week 1 – 16, 2024/2025)**

Suspected cases		Confirmed cases		Deaths		CFR	
2024	2025	2024	2025	2024	2025	2024	2025
951	904	2	2	1	0	0.1%	0%

*Figure 6: Trend of suspected and confirmed cases of Yellow Fever by epidemiological week, 2025.*



*Figure 7: Suspected cases of Yellow Fever by State, Nigeria, week 16, 2025.*



### Key points

- There were 40 suspected cases of Yellow Fever (YF) reported from 33 LGAs in 19 states. There was no laboratory confirmed case and no death was recorded.

### Actions

#### To date:

- National YF multi-partner Technical Working Group (TWG) continues to coordinate activities across states.
- Harmonizing surveillance and laboratory data.
- Provision of off-site surveillance support to affected States.

## Cholera

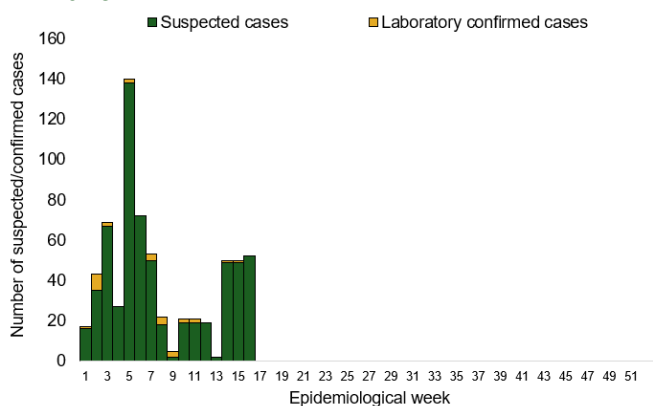
**Table 8: Week 16**

Suspected cases	Confirmed cases	Deaths	Number of States and LGAs affected
52	0	2	State: 7 LGA: 9

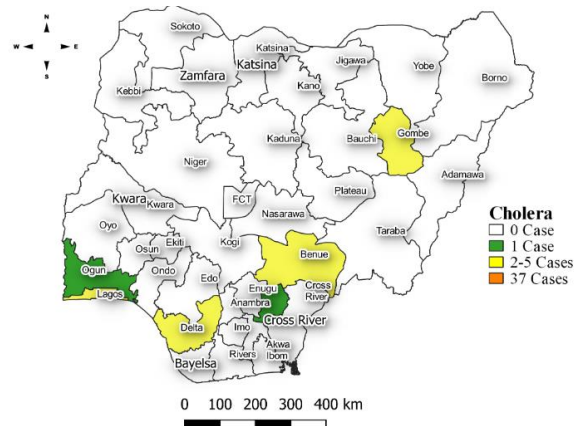
**Table 9: Cholera Year to date (week 1 – 16, 2024/2025)**

Suspected cases		Confirmed cases		Deaths		CFR	
2024	2025	2024	2025	2024	2025	2024	2025
1669	1652	3	40	24	49	1.4%	3%

*Figure 8: Trend of suspected and confirmed cases of Cholera by epidemiological week, 2025.*



*Figure 9: Trend of suspected and confirmed cases of Cholera, weeks 16, 2025.*



### Key points

- There were 52 suspected cases of Cholera reported from nine LGAs in seven states. There was no laboratory confirmed case and two deaths were recorded.

### Actions

#### To date:

- National Cholera Multi-Sectoral Technical Working Group (TWG) is monitoring all states and supporting affected states.
- Multi-sectoral State-level Emergency Operation Centres (EOCs) activated in Lagos State.
- Community social mobilisation, media interviews, distribution of Information, Education and Communication (IEC) materials and awareness campaigns ongoing in affected communities.
- Cholera advisory developed and circulated.
- Advocacy visits to the community and traditional leaders for Cholera prevention and treatment sensitization.

## Measles

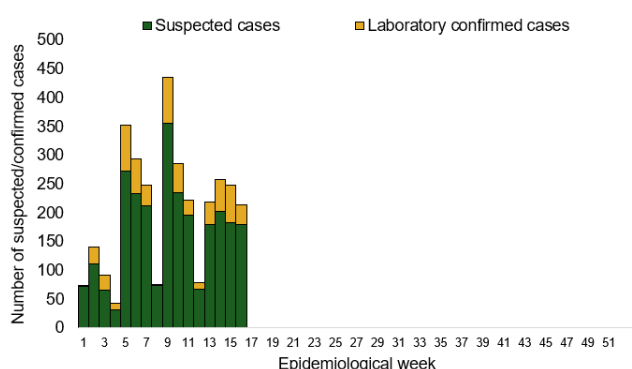
**Table 10: Week 16**

Suspected cases	Confirmed cases	Deaths	Number of States and LGAs affected
213	33	0	State: 30 LGA: 109

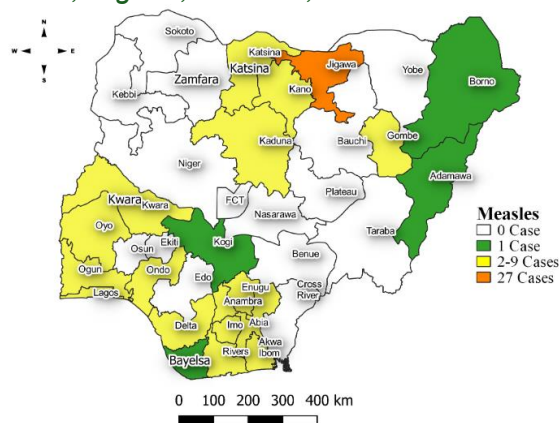
**Table 11: Measles Year to date (week 1 – 16, 2024/2025)**

Suspected cases		Confirmed cases		Deaths		CFR	
2024	2025	2024	2025	2024	2025	2024	2025
11718	6191	1709	1985	110	0	0.9%	0%

*Figure 10: Trend of suspected and confirmed cases of Measles by epidemiological week, 2025.*



*Figure 11: Suspected cases of Measles by State, Nigeria, week 16, 2025.*



### Key points

- There were 213 suspected cases of Measles reported from 109 LGAs in 30 states. There were 33 laboratory confirmed cases and no death was recorded.

### Actions

#### To date:

- National Measles Multi-Sectoral Technical Working Group (TWG) is closely monitoring measles surveillance data and providing feedback to relevant agencies and development partners.
- Testing of samples ongoing in the eight Reference Laboratories across the country.
- Weekly harmonisation of laboratory results from across the laboratories ongoing.
- Weekly feedback of key performance indicators to measles laboratories.

## Mpox

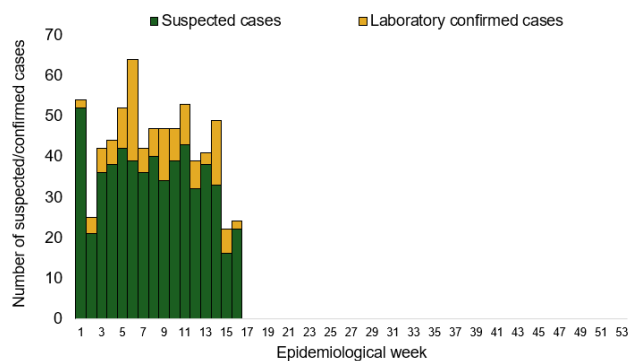
**Table 12: Week 16**

Suspected cases	Confirmed cases	Deaths	Number of States and LGAs affected
24	2	0	State: 10 LGA: 15

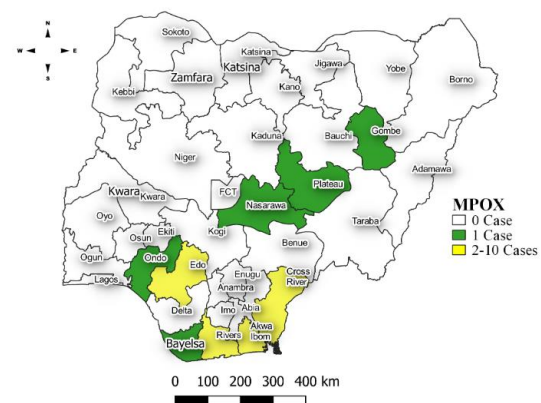
**Table 13: Year to date (week 1 – 16, 2024/2025)**

Suspected cases		Confirmed cases		Deaths		CFR	
2024	2025	2024	2025	2024	2025	2024	2025
419	693	20	132	0	3	0%	0.4%

*Figure 12: Trend of suspected and confirmed cases of Mpox by epidemiological week, 2025.*



*Figure 13: Suspected cases of Mpox by State, Nigeria, week 16, 2025.*



### Key points

- There were 24 suspected cases of Mpox reported from 15 LGAs in 10 states. There were two laboratory confirmed cases and no death was recorded.

### Actions

#### To date:

- National Monkeypox Technical Working Group (TWG) is monitoring activities in all states.
- Harmonisation of surveillance and laboratory data from across states and laboratories.
- Provision of off-site surveillance support to affected States.
- Weekly EOC meetings.

## Acute Flaccid Paralysis (AFP)

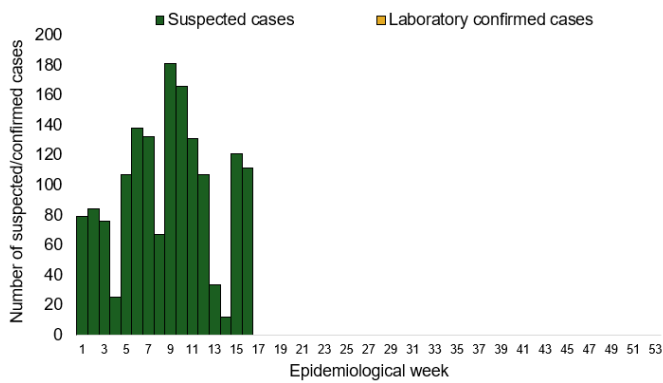
**Table 14: Week 16**

Suspected cases	Confirmed cases	Deaths	Number of States and LGAs affected
111	0	0	State: 20 LGA: 111

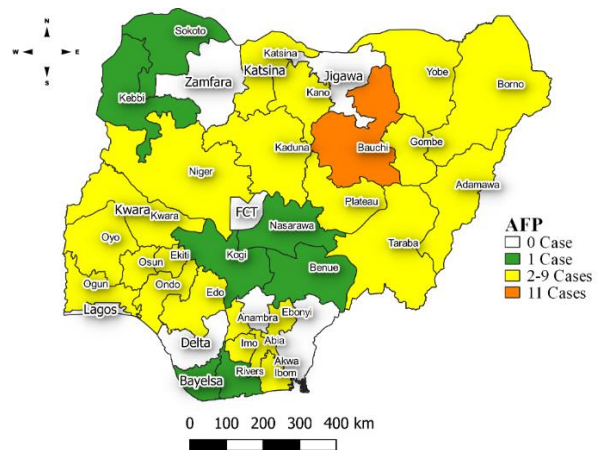
**Table 15: AFP Year to date (week 1 – 16, 2024/2025)**

Suspected cases		Confirmed cases		Deaths		CFR	
2024	2025	2024	2025	2024	2025	2024	2025
2573	1822	0	0	0	0	0%	0%

*Figure 14: Trend of suspected and confirmed cases of AFP by epidemiological week, 2025.*



*Figure 15: Suspected cases of AFP by State, Nigeria, week 16, 2025.*



### Key points

- There were 111 suspected cases of AFP reported from 111 LGAs in 20 states. There was no laboratory confirmed case and no death was recorded.

## COVID-19

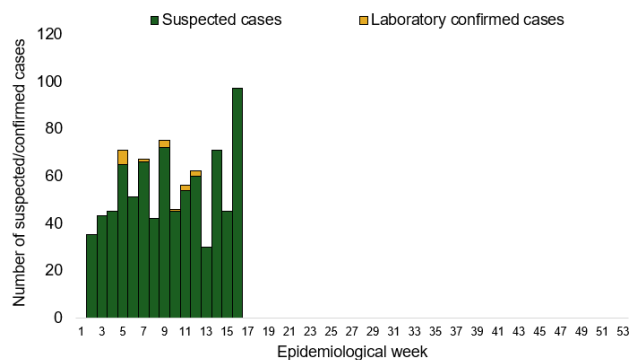
**Table 16: Week 16**

Suspected cases	Confirmed cases	Deaths	Number of States and LGAs affected
97	0	0	State: 6 + FCT LGA: 34

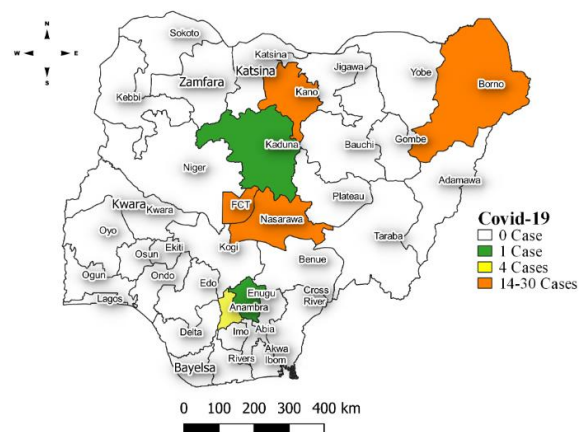
**Table 17: Covid 19 Year to date (Week 1- 16, 2024/2025)**

Suspected cases		Confirmed cases		Deaths		CFR	
2024	2025	2024	2025	2024	2025	2024	2025
771	898	771	20	1	0	0.1%	0%

*Figure 16: Trend of suspected and confirmed cases of Covid 19 by epidemiological week, 2025.*



*Figure 17: Suspected cases of Covid 19 by State, Nigeria, week 16, 2025.*



## Key points

- There were 97 suspected cases of Covid 19 reported from 34 LGAs in six states and FCT. There was no laboratory confirmed case and no death was recorded.

## Actions

### To date:

- National Covid 19 Technical Working Group (TWG) is monitoring activities in all states.
- Harmonisation of surveillance and laboratory data from across states and laboratories.
- Provision of off-site surveillance support to affected States.

## Diphtheria

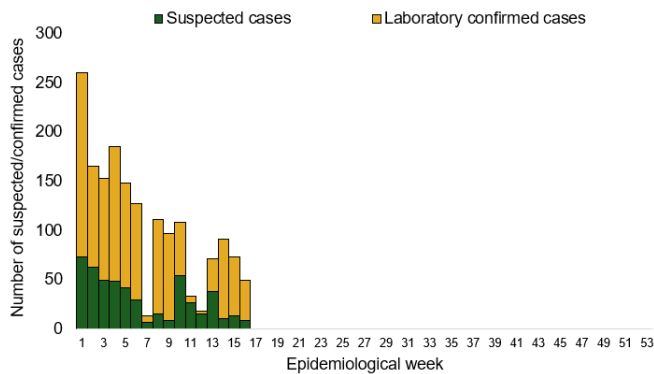
**Table 18: Week 16**

Suspected cases	Confirmed cases	Deaths	Number of States and LGAs affected
49	41	6	State: 7 LGA: 21

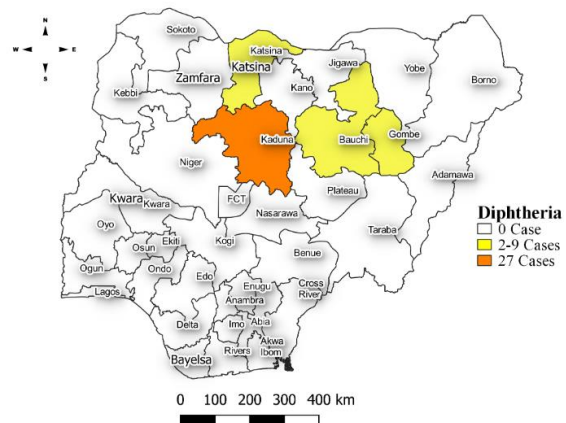
**Table 19: Diphtheria Year to date (week 1 – 16, 2024/2025)**

Suspected cases		Confirmed cases		Deaths		CFR	
2024	2025	2024	2025	2024	2025	2024	2025
8442	2119	5240	1525	130	94	1.5%	4.4%

*Figure 18: Trend of suspected and confirmed cases of Diphtheria by epidemiological week, 2025.*



*Figure 19: Suspected cases of Diphtheria by State, Nigeria, week 16, 2025.*



### Key points

- There were 49 suspected cases of Diphtheria reported from 21 LGAs in seven states. There were 41 confirmed cases and six deaths were recorded.

### Actions

#### To date:

- National Diphtheria Technical Working Group (TWG) is monitoring activities in all states.
- Analysis of sequenced *Corynebacterium diphtheriae* isolates.
- Continues engagement with key influencers (Religious and Traditional) in affected states and community. This is done by leveraging on National traditional and religious leaders' platform.
- Routine Immunization across public and private facilities in all states.
- Reactive vaccination in the affected states.

## National Influenza Sentinel Surveillance

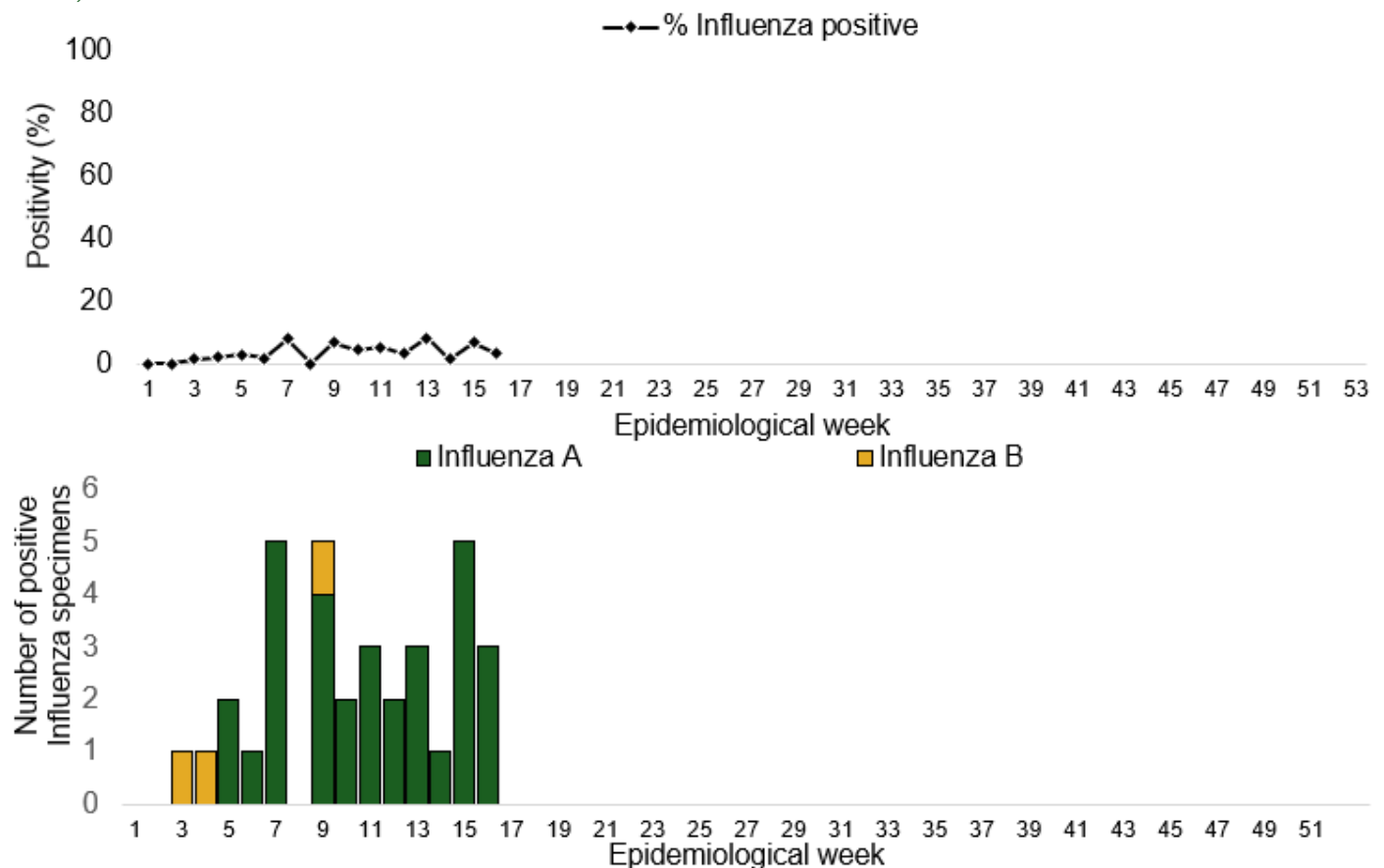
Table 20: Week 16

Suspected Cases	Confirmed Cases	Confirmed Case by type	
		Influenza A	Influenza B
97	3	3	0

Table 21: Year to date (week 1 – 16)

Suspected cases	Total Confirmed Cases	Confirmed cases by type	
		Influenza A	Influenza B
993	59	55	4

Figure 20: Number of influenza positive specimens by type and percentage positive by epidemiological week, 2025.



## Event Based Surveillance (EBS)

### Week 16

#### Key points

##### Epi Week 16

- 204 calls were successfully routed to agents and answered.
- 125 articles scanned through Epidemic Intelligence from Open Sources (EIOS).
- From the calls and EIOS, no signals were picked.

##### Cumulatively, from week 1 - 16

- 1922 calls were successfully routed to agents and answered.
- 28 Signals were picked and escalated.

Figure 22: Number of signals/events per week, 2025.

