



NIGERIA CENTRE FOR DISEASE
CONTROL AND PREVENTION

Nigeria Centre for Disease Control and Prevention

Protecting the health of Nigerians

Weekly Epidemiological Report

Week 14: 31st March – 6th April 2025

Highlight of the week

WORLD HEALTH DAY 2025: BUILDING HEALTHY BEGINNINGS FOR A HOPEFUL FUTURE



On April 7, 2025, the Nigeria Centre for Disease Control and Prevention (NCDC) proudly joins the global community to commemorate World Health Day with the theme, "Healthy Beginnings, Hopeful Future."

This year's theme emphasizes the importance of giving every child, mother, and family the strongest possible start in life. Access to quality healthcare, good nutrition, and essential support are vital for individuals and communities to thrive.

At NCDC, we remain dedicated to strengthening systems that protect and promote maternal and child health, prevent diseases, and encourage healthier lifestyles for all Nigerians.

A healthy mother means a healthy baby — yet many women still face significant risks during pregnancy and childbirth. Regular check-ups, proper nutrition, vaccination, and skilled care during delivery can save countless lives. When mothers are healthy, children grow stronger, and entire communities flourish.

Supporting maternal health is not just about caring for women; it is an investment in a brighter, healthier future for all. Every woman deserves access to quality healthcare, and every child deserves a strong, healthy start in life.

On this World Health Day, we call on all Nigerians to join hands in creating safe, supportive environments where everyone can reach their full potential.

Together, we can build a future filled with hope, health, and opportunity for generations to come.

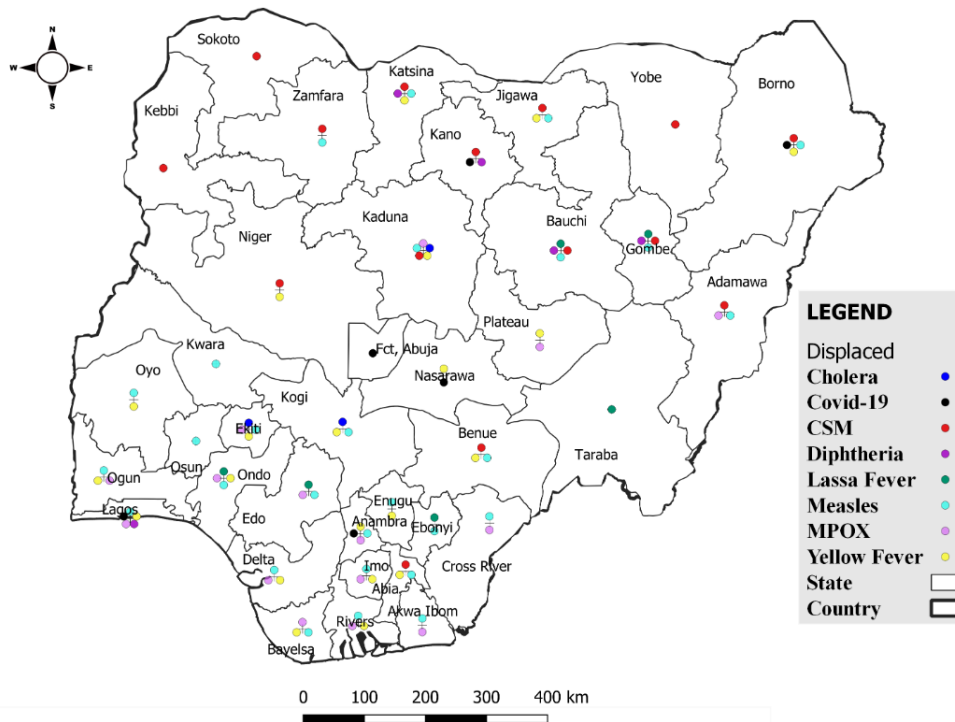
Summary of Incidents

Ongoing incidents
5

The Ongoing incidents within the reporting week are Lassa Fever, Cholera, Mpox, CSM and Diphtheria.

**Ongoing incidents are defined as confirmed cases where a national EOC or equivalent has been activated.*

Figure 1: Priority Diseases under surveillance in Nigeria, week 14, 2025.



Summary of Diseases

Table 1: Week 14 (31st March – 6th April 2025)

Lassa Fever ₁	Cerebrospinal Meningitis (CSM) ₂	Yellow Fever ₂
246 Suspected case(s)	387 Suspected case(s)	54 Suspected case(s)
15 Confirmed case(s)	32 Confirmed case(s)	0 Confirmed case(s)
6 Death(s)	21 Death(s)	0 Death(s)
Cholera ₂	Measles ₂	Mpox ₂
50 Suspected case(s)	257 Suspected case(s)	49 Suspected case(s)
1 Confirmed case(s)	54 Confirmed case(s)	16 Confirmed case(s)
1 Death(s)	0 Death(s)	0 Death(s)
Acute Flaccid Paralysis (AFP) ₂	COVID-19 ₂	Diphtheria ₂
12 Suspected case(s)	71 Suspected case(s)	91 Suspected case(s)
0 Confirmed case(s)	0 Confirmed case(s)	81 Confirmed case(s)
0 Death(s)	0 Death(s)	5 Death(s)
National Sentinel influenza surveillance ₃		
7 Suspected case(s)		
1 Confirmed case(s)		

Information for this disease was retrieved from the Technical Working Group and Situation Reports of Nigerian Centre for Disease Control and Prevention

1. Case Fatality Rate (CFR) for this disease is reported for confirmed cases only.
2. CFR for this disease is reported for total cases i.e. suspected + confirmed.
3. Information for sentinel influenza was retrieved from the laboratory.

Lassa Fever

Table 1: Week 14

Suspected cases	Confirmed cases	Deaths	Number of States and LGAs affected
246	15	5	State: 10 + FCT LGA: 19

Table 2: Lassa Fever Year to date (week 1 – 14, 2024/2025)

Suspected cases		Confirmed cases		Deaths		CFR	
2024	2025	2024	2025	2024	2025	2024	2025
5481	4025	817	674	151	127	18.5%	18.8%

Figure 2: Trend of suspected and confirmed cases of Lassa Fever by epidemiological week, 2025.

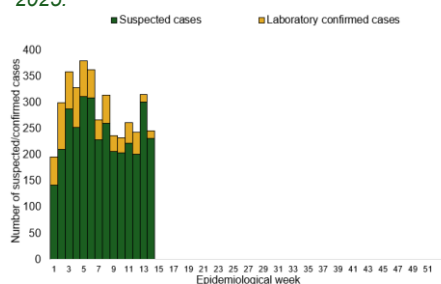
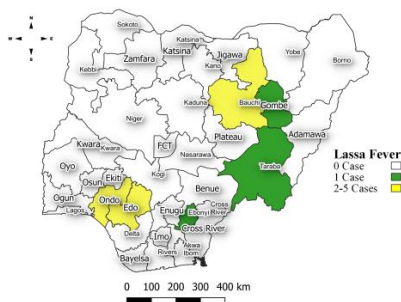


Figure 3: **Confirmed** cases of Lassa Fever by State, Nigeria, week 14, 2025.



Key points

- There were 246 suspected cases of Lassa Fever reported from 19 LGAs in 10 states and FCT. There were 15 laboratory confirmed cases and five deaths were recorded.

Actions

To date:

- National Lassa fever multi-partner, multi-sectoral Technical Working Group (TWG) continues to coordinate the response activities at all levels.
- Held a webinar on Lassa fever risk mapping geospatial analysis
- Participated in the Regional Training on Lassa Fever Clinical Management in ECOWAS Countries in Togo

Cerebrospinal Meningitis (CSM)

Table 4: Week 14

Suspected cases	Confirmed cases	Deaths	Number of States and LGAs affected
387	32	21	State: 15 LGA: 45

Table 5: CSM Year to date (week 1 – 14, 2024/2025)

Suspected cases		Confirmed cases		Deaths		CFR	
2024	2025	2024	2025	2024	2025	2024	2025
2329	2511	48	171	123	198	5.3%	7.9%

Figure 4: Trend of suspected and confirmed cases of CSM by epidemiological week, 2025.

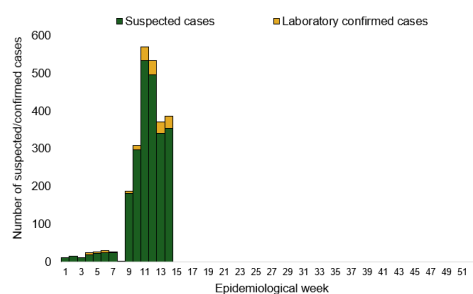
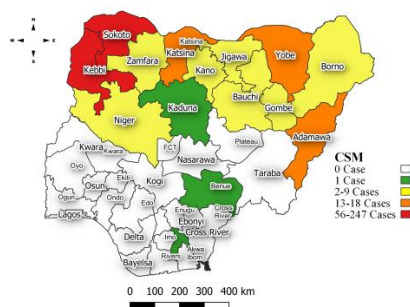


Figure 5: Suspected cases of CSM by State, Nigeria, week 14, 2025.



Key points

- There were 387 suspected cases of Cerebrospinal meningitis (CSM) reported from 45 LGAs in 15 states. There were 32 laboratory confirmed cases and 21 deaths were recorded.

Actions

To date:

- National CSM multi-partner Technical Working Group (TWG) continues to coordinate activities across states.
- Implementation of targeted risk communication activities across high-risk states.
- CSM advisory developed and circulated across high-risk states.

Commented [NA1]: I thought they are in response mode

Yellow Fever

Table 6: Week 14

Suspected cases	Confirmed cases	Deaths	Number of States and LGAs affected
54	0	0	State: 22 LGA: 40

Table 7: Yellow Fever Year to date (week 1 – 14, 2024/2025)

Suspected cases		Confirmed cases		Deaths		CFR	
2024	2025	2024	2025	2024	2025	2024	2025
837	817	2	2	1	0	0.12%	0%

Figure 6: Trend of suspected and confirmed cases of Yellow Fever by epidemiological week, 2025.

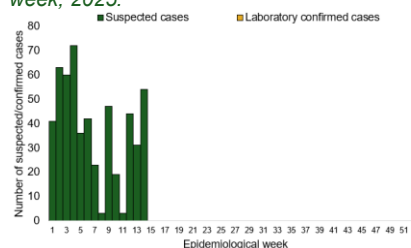
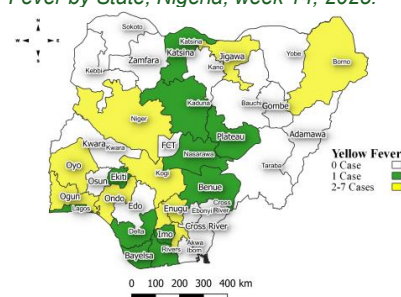


Figure 7: Suspected cases of Yellow Fever by State, Nigeria, week 14, 2025.



Key points

- There were 54 suspected cases of Yellow Fever (YF) reported from 40 LGAs in 22 states. There was no laboratory confirmed case and no death was recorded.

Actions

To date:

- National YF multi-partner Technical Working Group (TWG) continues to coordinate activities across states.
- Harmonizing surveillance and laboratory data.
- Provision of off-site surveillance support to affected States.

Cholera

Table 8: Week 14

Suspected cases	Confirmed cases	Deaths	Number of States and LGAs affected
50	1	1	State: 7 LGA: 8

Table 9: Cholera Year to date (week 1 – 14, 2024/2025)

Suspected cases		Confirmed cases		Deaths		CFR	
2024	2025	2024	2025	2024	2025	2024	2025
1560	1550	3	39	20	46	1.3%	3%

Figure 8: Trend of suspected and confirmed cases of Cholera by epidemiological week, 2025.

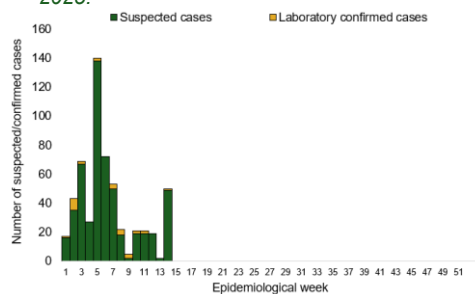
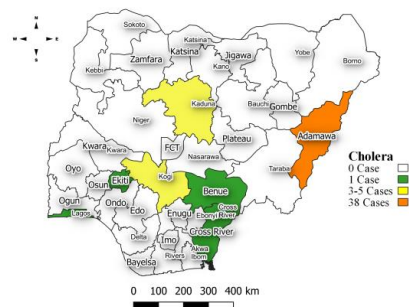


Figure 9: Trend of suspected and confirmed cases of Cholera, weeks 14, 2025.



Key points

- There were 50 suspected cases of Cholera reported from eight LGAs in seven states. There was one laboratory confirmed case and one death was recorded.

Actions

To date:

- National Cholera Multi-Sectoral Technical Working Group (TWG) is monitoring all states and supporting affected states.
- Community social mobilisation, media interviews, distribution of Information, Education and Communication (IEC) materials and awareness campaigns ongoing in affected communities.

Mpox

Table 12: Week 14

Suspected cases	Confirmed cases	Deaths	Number of States and LGAs affected
49	16	0	State: 15 LGA: 24

Table 13: Year to date (week 1 – 14, 2024/2025)

Suspected cases		Confirmed cases		Deaths		CFR	
2024	2025	2024	2025	2024	2025	2024	2025
372	647	19	124	0	3	0%	0.5%

Figure 12: Trend of suspected and confirmed cases of Mpox by epidemiological week, 2025.

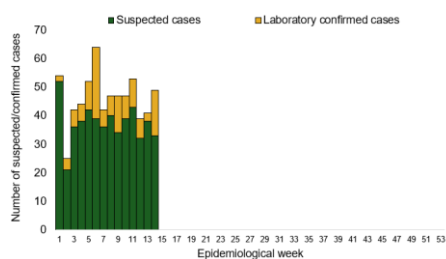
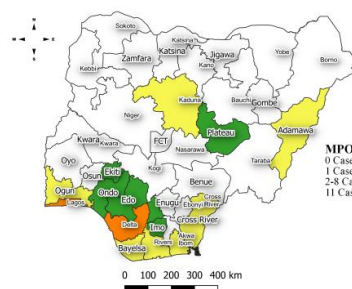


Figure 13: Suspected cases of Mpox by State, Nigeria, week 14, 2025.



Key points

- There were 49 suspected cases of Mpox reported from 24 LGAs in 15 states. There were 16 laboratory confirmed cases and no death was recorded.

Actions

To date:

- National Monkeypox Technical Working Group (TWG) is monitoring activities in all states.
- Harmonisation of surveillance and laboratory data from across states and laboratories.
- Provision of off-site surveillance support to affected States.
- Weekly EOC meetings.

Acute Flaccid Paralysis (AFP)

Table 14: Week 14

Suspected cases	Confirmed cases	Deaths	Number of States and LGAs affected
12	0	0	State: 11 LGA: 12

Table 15: AFP Year to date (week 1 – 14, 2024/2025)

Suspected cases		Confirmed cases		Deaths		CFR	
2024	2025	2024	2025	2024	2025	2024	2025
2257	1590	0	0	0	0	0%	0%

Figure 14: Trend of suspected and confirmed cases of AFP by epidemiological week, 2025.

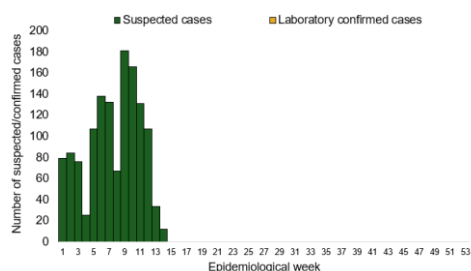
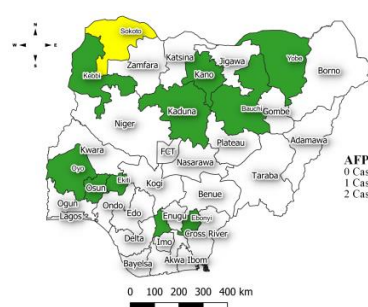


Figure 15: Suspected cases of AFP by State, Nigeria, week 14, 2025.



Key points

- There were 12 suspected cases of AFP reported from 12 LGAs in 11 states. There was no laboratory confirmed case and no death was recorded.

Coronavirus Disease (COVID-19)

Table 16: Week 14

Suspected cases	Confirmed cases	Deaths	Number of States and LGAs affected
71	0	0	State: 5 + FCT LGA: 34

Table 17: Covid 19 Year to date (Week 1- 14, 2024/2025)

Suspected cases		Confirmed cases		Deaths		CFR	
2024	2025	2024	2025	2024	2025	2024	2025
758	756	758	20	1	0	0.1%	0%

Figure 16: Trend of suspected and confirmed cases of Covid 19 by epidemiological week, 2025.

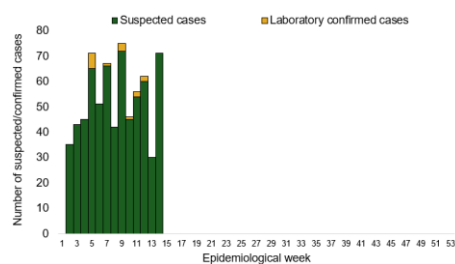
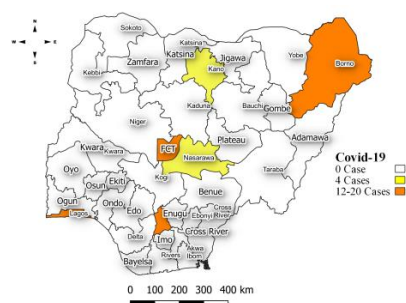


Figure 17: Suspected cases of Covid 19 by State, Nigeria, week 14, 2025.



Key points

- There were 71 suspected cases of Covid 19 reported from 34 LGAs in five states and FCT. There was no laboratory confirmed case and no death was recorded.

Actions

To date:

- National Covid 19 Technical Working Group (TWG) is monitoring activities in all states.
- Harmonisation of surveillance and laboratory data from across states and laboratories.
- Provision of off-site surveillance support to affected States.

Diphtheria

Table 18: Week 14

Suspected cases	Confirmed cases	Deaths	Number of States and LGAs affected
91	81	5	State: 5 LGA: 19

Table 19: Diphtheria Year to date (week 1 – 14, 2024/2025)

Suspected cases		Confirmed cases		Deaths		CFR	
2024	2025	2024	2025	2024	2025	2024	2025
7604	1997	4552	1424	110	87	1.4%	4.4%

Figure 18: Trend of suspected and confirmed cases of Diphtheria by epidemiological week, 2025.

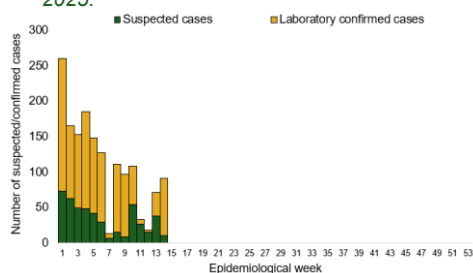
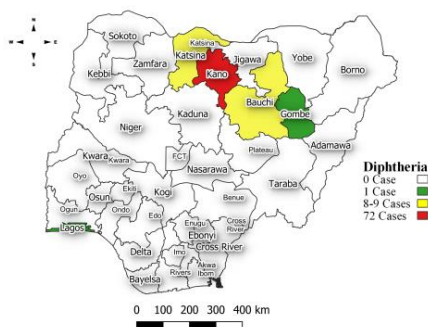


Figure 19: Suspected cases of Diphtheria by State, Nigeria, week 14, 2025.



Key points

- There were 91 suspected cases of Diphtheria reported from 19 LGAs in five states. There were 81 confirmed cases and five deaths were recorded.

Actions

To date:

- National Diphtheria Technical Working Group (TWG) is monitoring activities in all states.
- Continues engagement with key influencers (Religious and Traditional) in affected states and community. This is done by leveraging on National traditional and religious leaders' platform.

National Influenza Sentinel Surveillance

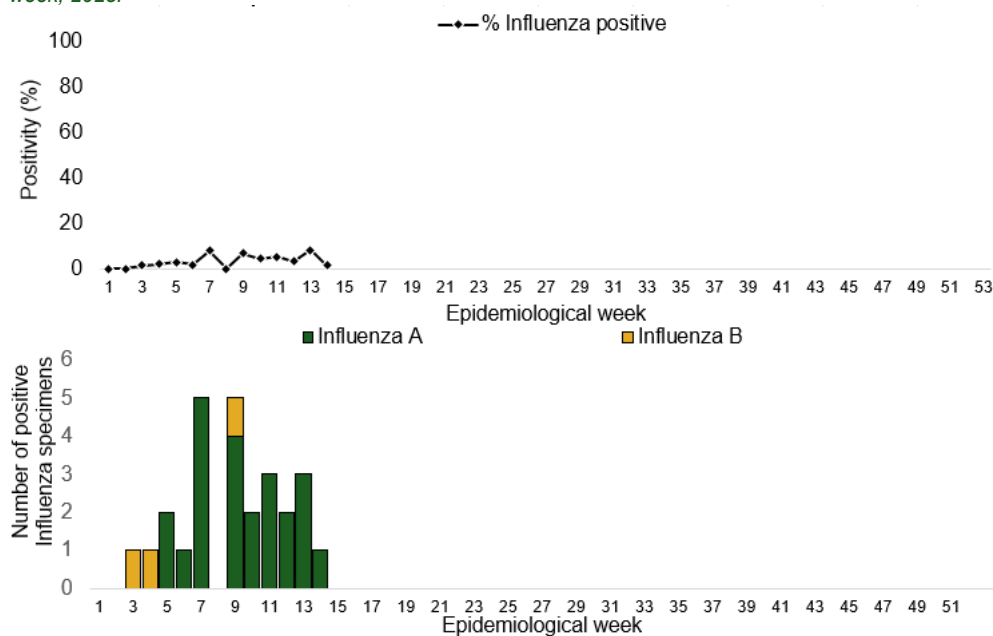
Table 20: Week 14

Suspected Cases	Confirmed Cases	Confirmed Case by type	
		Influenza A	Influenza B
74	1	1	0

Table 21: Year to date (week 1 – 14)

Suspected cases	Total Confirmed Cases	Confirmed cases by type	
		Influenza A	Influenza B
821	51	47	4

Figure 20: Number of influenza positive specimens by type and percentage positive by epidemiological week, 2025.



Event Based Surveillance (EBS)

Week 14

Key points

Epi Week 14

- 177 calls were successfully routed to agents and answered.
- Over 500 articles scanned through Epidemic Intelligence from Open Sources (EIOS).
- From the calls and EIOS, one signal (suspected cases of Lassa Fever and Ebola) was picked and escalated to the corresponding TWG.

Cumulatively, from week 1 - 14

- 1606 calls were successfully routed to agents and answered.
- 26 Signals were picked and escalated.

Figure 22: Number of signals/events per week, 2025.

