



NIGERIA CENTRE FOR DISEASE  
CONTROL AND PREVENTION

**Nigeria Centre for Disease Control and Prevention**

*Protecting the health of Nigerians*

## **Weekly Epidemiological Report**

**Week 11: 10<sup>th</sup> – 16<sup>th</sup> March 2025**

### **Highlight of the week**

#### **STRENGTHENING HEALTH SECURITY THROUGH ONE HEALTH**



On March 10, 2025, the National One Health Technical Committee convened a high-level meeting with stakeholders from key government ministries, academic institutions, and international partners, including the World Health Organization (WHO), the UK Health Security Agency (UKHSA), and Resolve to Save Lives. The objective was to strengthen Nigeria's health security framework through a collaborative One Health approach that recognizes the interconnectedness of human, animal, and environmental health.

Participants reviewed progress on previous action points, evaluated the status of ongoing public health outbreaks such as Lassa Fever, Mpox, and Cholera, and discussed the implementation of critical initiatives, including the National Poultry Farm Registration and the Integrated National Environmental and Health Surveillance System (INEHSS).

The meeting concluded with a renewed commitment to intersectoral coordination, data-driven decision-making, and sustained investment in One Health infrastructure, reinforcing the importance of collective action in addressing current and emerging health threats across Nigeria.

## Summary of Incidents

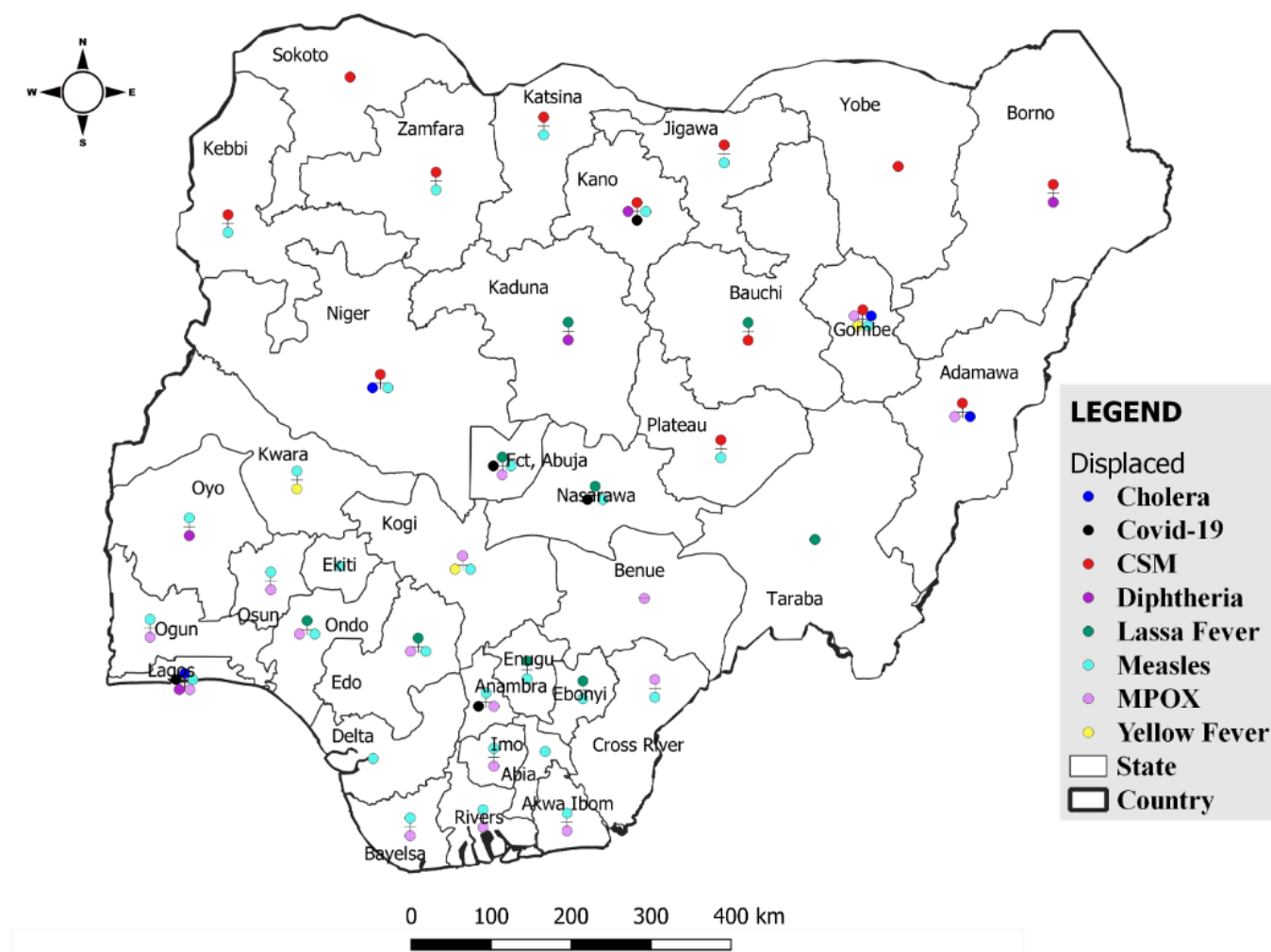
### Ongoing incidents

5

The Ongoing incidents within the reporting week are Lassa Fever, Cholera, Mpox, CSM and Diphtheria.

*\*Ongoing incidents are defined as confirmed cases where a national EOC or equivalent has been activated.*

Figure 1: Priority Diseases under surveillance in Nigeria, week 11, 2025.



## Summary of Diseases

**Table 1: Week 11 (10<sup>th</sup> – 16<sup>th</sup> March 2025)**

Lassa Fever <sub>1</sub>	Cerebrospinal Meningitis (CSM) <sub>2</sub>	Yellow Fever <sub>2</sub>
262 Suspected case(s)	571 Suspected case(s)	3 Suspected case(s)
40 Confirmed case(s)	37 Confirmed case(s)	0 Confirmed case(s)
10 Death(s)	43 Death(s)	0 Death(s)
Cholera <sub>2</sub>	Measles <sub>2</sub>	Mpox <sub>2</sub>
21 Suspected case(s)	222 Suspected case(s)	53 Suspected case(s)
2 Confirmed case(s)	26 Confirmed case(s)	10 Confirmed case(s)
0 Death(s)	0 Death(s)	0 Death(s)
Acute Flaccid Paralysis (AFP) <sub>2</sub>	Coronavirus Disease <sub>2</sub>	Diphtheria <sub>2</sub>
131 Suspected case(s)	56 Suspected case(s)	33 Suspected case(s)
0 Confirmed case(s)	2 Confirmed case(s)	7 Confirmed case(s)
0 Death(s)	0 Death(s)	2 Death(s)
National Sentinel influenza surveillance <sub>3</sub>		
56 Suspected case(s)		
3 Confirmed case(s)		

Information for this disease was retrieved from the Technical Working Group and Situation Reports of Nigerian Centre for Disease Control and Prevention

1. Case Fatality Rate (CFR) for this disease is reported for confirmed cases only.
2. CFR for this disease is reported for total cases i.e. suspected + confirmed.
3. Information for sentinel influenza was retrieved from the laboratory.

## Lassa Fever

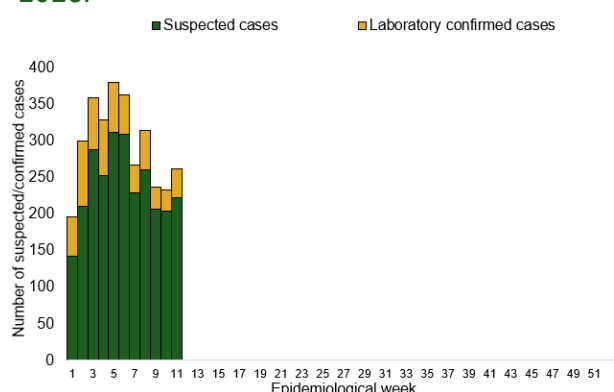
**Table 1: Week 11**

Suspected cases	Confirmed cases	Deaths	Number of States and LGAs affected
262	40	10	State: 10 + FCT LGA: 23

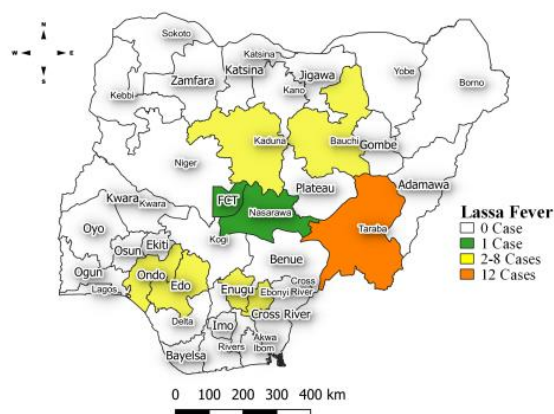
**Table 2: Lassa Fever Year to date (week 1 – 11, 2024/2025)**

Suspected cases		Confirmed cases		Deaths		CFR	
2024	2025	2024	2025	2024	2025	2024	2025
4726	3223	766	604	142	113	18.5%	18.7%

*Figure 2: Trend of suspected and confirmed cases of Lassa Fever by epidemiological week, 2025.*



*Figure 3: **Confirmed** cases of Lassa Fever by State, Nigeria, week 11, 2025.*



## Key points

- There were 262 suspected cases of Lassa Fever reported from 23 LGAs in 10 states and FCT. There were 40 laboratory confirmed cases and ten deaths were recorded.

## Actions

### To date:

- National Lassa fever multi-partner, multi-sectoral Technical Working Group (TWG) continues to coordinate the response activities at all levels.
- Continued provision of offsite support to all States sending daily and weekly situation reports.
- Confirmed cases are treated at identified treatment centres across the states.
- Dissemination of reviewed case management and safe burial practices guidelines.
- IPC Guideline development workshop conducted in Bauchi State supported by WB through CoPREP.
- Diagnosis of all samples in the Eight Lassa fever testing laboratories across the country.

## Cerebrospinal Meningitis (CSM)

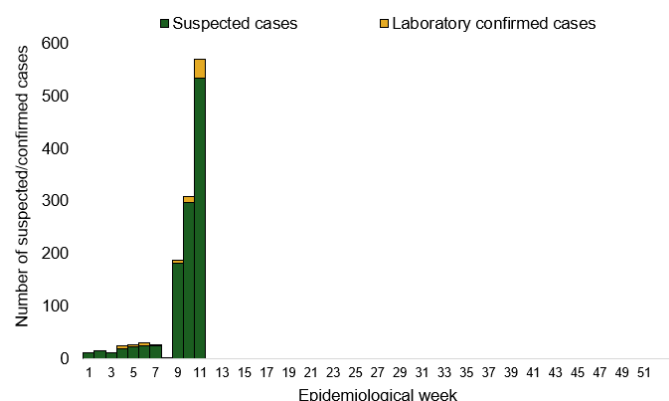
**Table 4: Week 11**

Suspected cases	Confirmed cases	Deaths	Number of States and LGAs affected
571	37	43	State: 13 LGA: 55

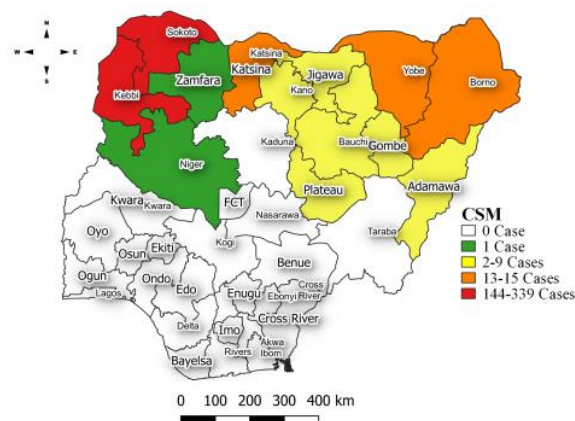
**Table 5: CSM Year to date (week 1 – 11, 2024/2025)**

Suspected cases		Confirmed cases		Deaths		CFR	
2024	2025	2024	2025	2024	2025	2024	2025
1744	1217	42	71	105	119	6%	9.8%

*Figure 4: Trend of suspected and confirmed cases of CSM by epidemiological week, 2025.*



*Figure 5: Suspected cases of CSM by State, Nigeria, week 11, 2025.*



## Key points

- There were 571 suspected cases of Cerebrospinal meningitis (CSM) reported from 55 LGAs in 13 states. There were 37 laboratory confirmed cases and 43 deaths were recorded.

## Actions

### To date:

- National CSM multi-partner Technical Working Group (TWG) continues to coordinate activities across states.
- Activation of the national multi-sectoral EOC.
- CSM culture testing across state-level laboratories.
- Shipment of aliquot samples for PCR at NCDC National Reference Laboratory (NRL) and CPHL, Lagos for molecular diagnosis (PCR).
- Onsite mentoring of Laboratorians on sample management by NRRT in Bauchi.

Yellow Fever

Table 6: Week 11

Suspected cases	Confirmed cases	Deaths	Number of States and LGAs affected
3	0	0	State: 3 LGA: 3

Table 7: Yellow Fever Year to date (week 1 – 11, 2024/2025)

Suspected cases		Confirmed cases		Deaths		CFR	
2024	2025	2024	2025	2024	2025	2024	2025
703	465	2	0	1	0	0.1%	0%

Figure 6: Trend of suspected and confirmed cases of Yellow Fever by epidemiological week, 2025.

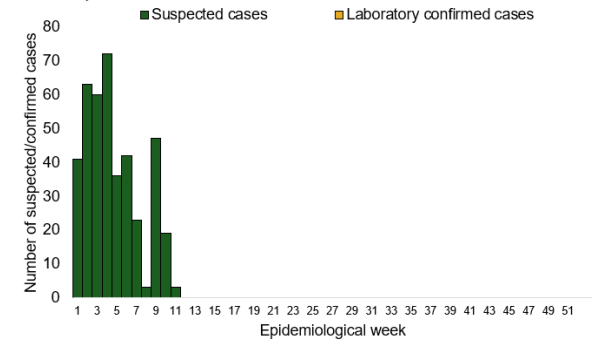
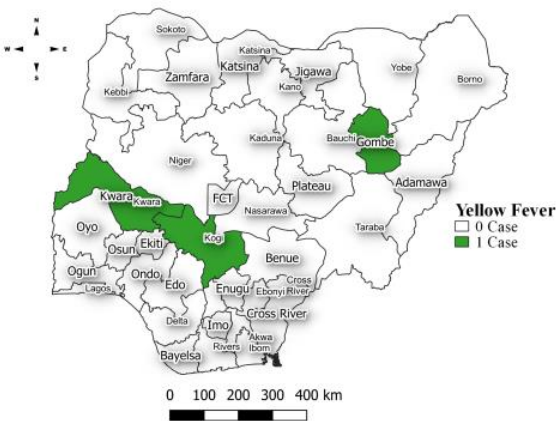


Figure 7: Suspected cases of Yellow Fever by State, Nigeria, week 11, 2025.



Key points

- There were three suspected cases of Yellow Fever (YF) reported from three LGAs in three states. There was no laboratory confirmed case and no death recorded.

Actions

To date:

- National YF multi-partner Technical Working Group (TWG) continues to coordinate activities across states.
- Harmonizing surveillance and laboratory data.
- Provision of off-site surveillance support to affected States.



## Cholera

**Table 8: Week 11**

Suspected cases	Confirmed cases	Deaths	Number of States and LGAs affected
21	2	0	State: 4 LGA: 7

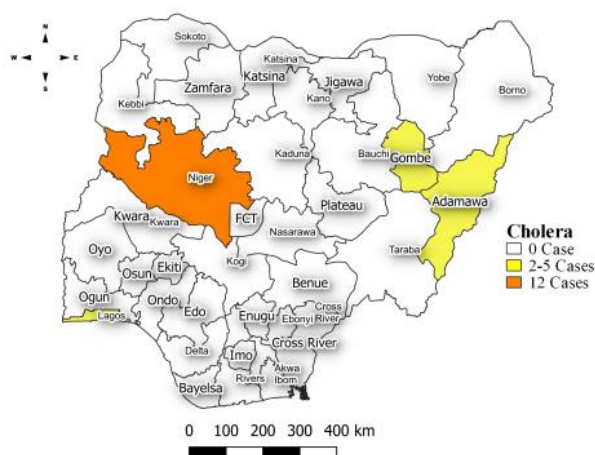
**Table 9: Cholera Year to date (week 1 – 11, 2024/2025)**

Suspected cases		Confirmed cases		Deaths		CFR	
2024	2025	2024	2025	2024	2025	2024	2025
1370	1185	3	36	17	28	1.2%	2.4%

*Figure 8: Trend of suspected and confirmed cases of Cholera by epidemiological week, 2025.*



*Figure 9: Trend of suspected and confirmed cases of Cholera, weeks 11, 2025.*



## Key points

- There were 21 suspected cases of Cholera reported from seven LGAs in four states. There were two laboratory confirmed cases and no death recorded.

## Actions

### To date:

- National Cholera Multi-Sectoral Technical Working Group (TWG) is monitoring all states and supporting affected states.
- Cholera jingles are being aired in English and local languages.
- Epidemiological trend is being monitored to guide ICG request for planned vaccination campaigns.
- Essential response commodities are being distributed to all cholera affected states.

## Measles

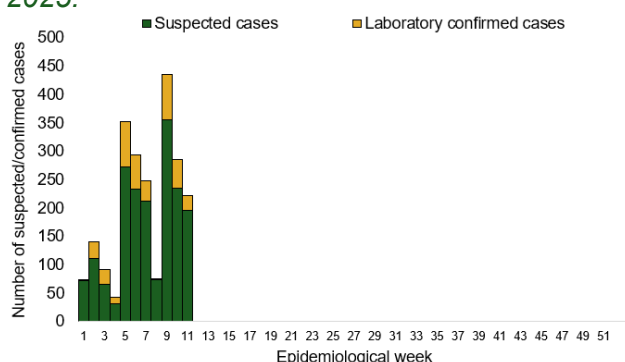
**Table 10: Week 11**

Suspected cases	Confirmed cases	Deaths	Number of States and LGAs affected
222	26	0	State: 28 + FCT LGA: 132

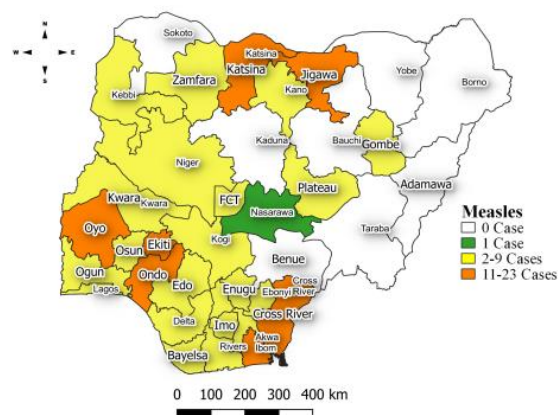
**Table 11: Measles Year to date (week 1 – 11, 2024/2025)**

Suspected cases		Confirmed cases		Deaths		CFR	
2024	2025	2024	2025	2024	2025	2024	2025
8423	4299	1292	974	60	0	0.7%	0%

*Figure 10: Trend of suspected and confirmed cases of Measles by epidemiological week, 2025.*



*Figure 11: Suspected cases of Measles by State, Nigeria, week 11, 2025.*



## Key points

- There were 222 suspected cases of Measles reported from 132 LGAs in 28 states and FCT. There were 26 laboratory confirmed cases and no death recorded.

## Actions

### To date:

- National Measles TWG is closely monitoring measles surveillance data and providing feedback to relevant agencies and development partners.
- Testing of samples ongoing in the eight Reference Laboratories across the country.
- Weekly harmonisation of laboratory results from across the laboratories ongoing.



# Mprox

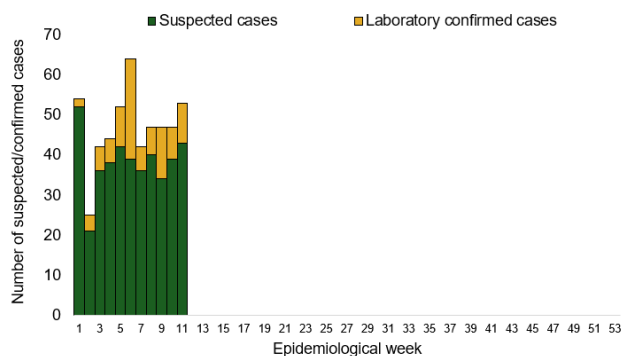
### Table 12: Week 11

Suspected cases	Confirmed cases	Deaths	Number of States and LGAs affected
53	10	0	State: 15 + FCT LGA: 34

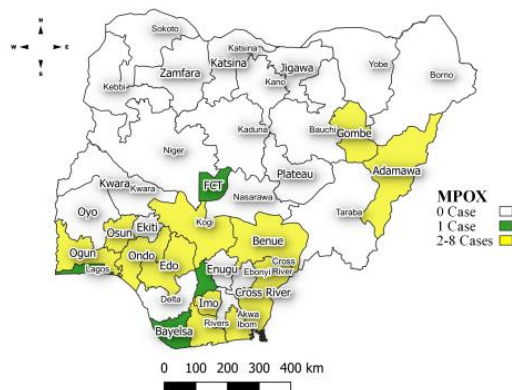
### Table 13: Year to date (week 1 – 11, 2024/2025)

Suspected cases		Confirmed cases		Deaths		CFR	
2024	2025	2024	2025	2024	2025	2024	2025
261	518	12	98	0	2	0%	0.4%

Figure 12: Trend of suspected and confirmed cases of Mpox by epidemiological week, 2025.



*Figure13: Suspected cases of Mpox by State, Nigeria, week 11, 2025.*



## Key points

- There were 53 suspected cases of Mpox reported from 34 LGAs in 15 states and FCT. There were 10 laboratory confirmed cases and no death recorded.

## Actions

## To date:

- National Monkeypox Technical Working Group (TWG) is monitoring activities in all states.
- Harmonisation of surveillance and laboratory data from across states and laboratories.
- Provision of off-site surveillance support to affected States.
- Weekly EOC meetings.

Acute Flaccid Paralysis (AFP)

Table 14: Week 11

Suspected cases	Confirmed cases	Deaths	Number of States and LGAs affected
131	0	0	State: 24 LGA: 131

Table 15: AFP Year to date (week 1 – 11, 2024/2025)

Suspected cases		Confirmed cases		Deaths		CFR	
2024	2025	2024	2025	2024	2025	2024	2025
1864	1438	0	0	0	0	0%	0%

Figure 14: Trend of suspected and confirmed cases of AFP by epidemiological week, 2025.

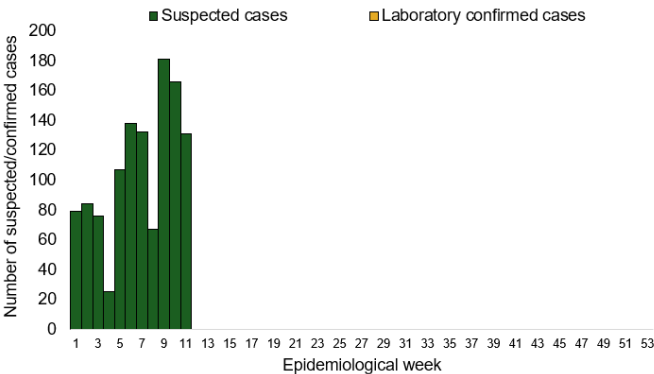
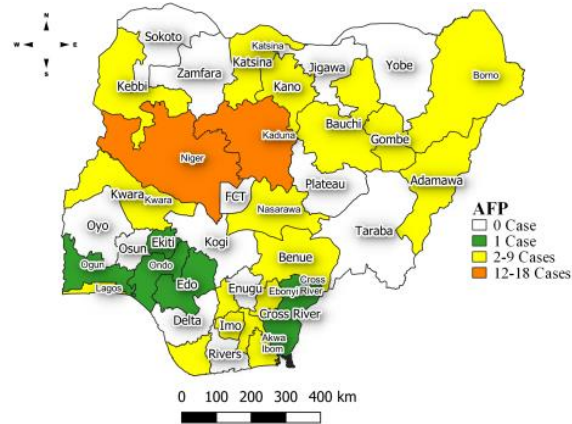


Figure 15: Suspected cases of AFP by State, Nigeria, week 11, 2025.



Key points

- There were 131 suspected cases of AFP reported from 131 LGAs in 24 states. There was no laboratory confirmed case and no death was recorded.

## Coronavirus Disease (COVID-19)

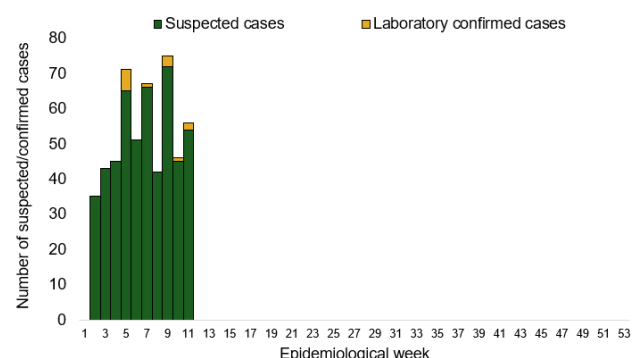
**Table 16: Week 11**

Suspected cases	Confirmed cases	Deaths	Number of States and LGAs affected
56	2	0	State: 4 + FCT LGA: 20

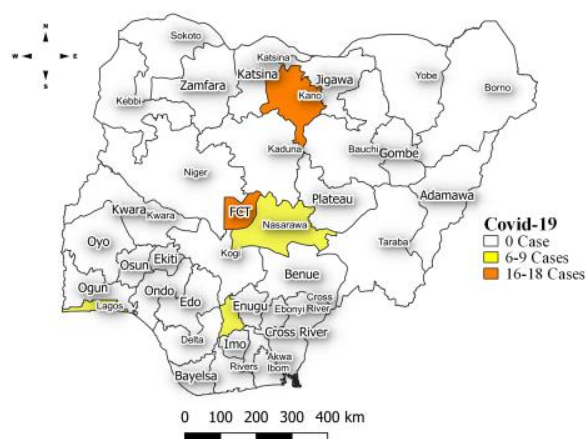
**Table 17: Covid 19 Year to date (Week 1- 11, 2024/2025)**

Suspected cases		Confirmed cases		Deaths		CFR	
2024	2025	2024	2025	2024	2025	2024	2025
679	593	679	18	0	0	0%	0%

*Figure 16: Trend of suspected and confirmed cases of Covid 19 by epidemiological week, 2025.*



*Figure 17: Suspected cases of Covid 19 by State, Nigeria, week 11, 2025.*



## Key points

- There were 56 suspected cases of Covid 19 reported from 20 LGAs in four states and FCT. There were two laboratory confirmed cases and no death recorded.

## Actions

### To date:

- National Covid 19 Technical Working Group (TWG) is monitoring activities in all states.
- Harmonisation of surveillance and laboratory data from across states and laboratories.
- Provision of off-site surveillance support to affected States.

## Diphtheria

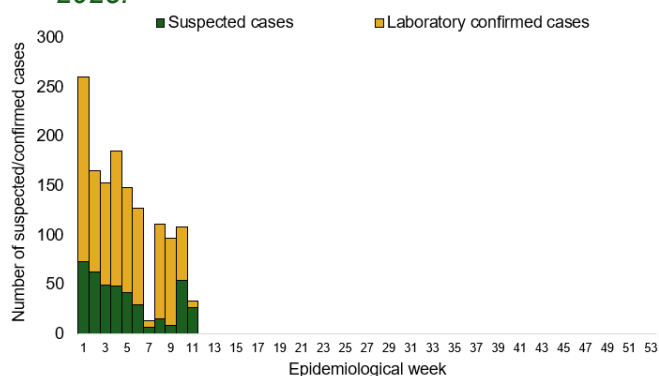
**Table 18: Week 11**

Suspected cases	Confirmed cases	Deaths	Number of States and LGAs affected
33	7	2	State: 5 LGA: 5

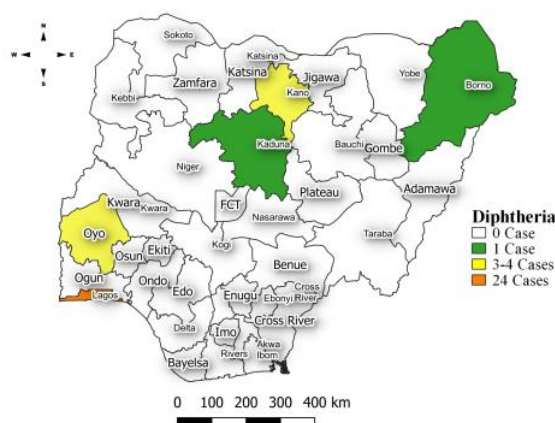
**Table 19: Diphtheria Year to date (week 1 – 11, 2024/2025)**

Suspected cases		Confirmed cases		Deaths		CFR	
2024	2025	2024	2025	2024	2025	2024	2025
6304	1587	3496	1146	81	63	1.3%	4%

*Figure 18: Trend of suspected and confirmed cases of Diphtheria by epidemiological week, 2025.*



*Figure 19: Suspected cases of Diphtheria by State, Nigeria, week 11, 2025.*



## Key points

- There were 33 suspected cases of Diphtheria reported from five LGAs in five states. There were seven confirmed cases and two deaths recorded.

## Actions

### To date:

- National Diphtheria Technical Working Group (TWG) is monitoring activities in all states.
- Provide technical and offsite support to states on case identification, reporting and response especially non-reporting and low burden states.
- Data harmonization with laboratory and case management pillars.

National Influenza Sentinel Surveillance

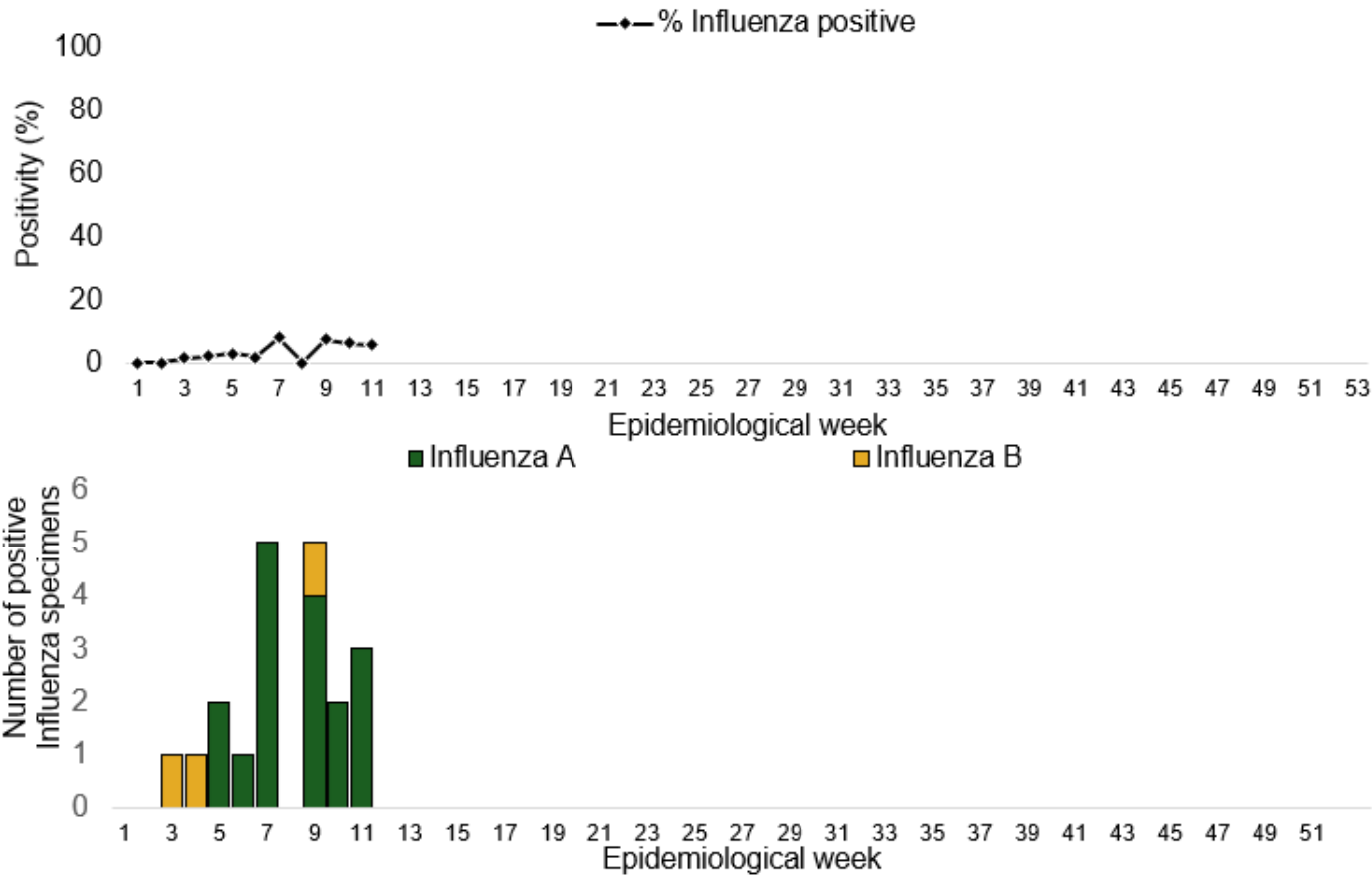
Table 20: Week 11

Suspected Cases	Confirmed Cases	Confirmed Case by type	
		Influenza A	Influenza B
56	3	3	0

Table 21: Year to date (week 1 – 11)

Suspected cases	Total Confirmed Cases	Confirmed cases by type	
		Influenza A	Influenza B
628	37	33	4

Figure 20: Number of influenza positive specimens by type and percentage positive by epidemiological week, 2025.



## Event Based Surveillance (EBS)

### Week 11

#### Key points

##### Epi Week 11

- 131 Calls were successfully routed to agents and answered.
- 200 articles scanned through Epidemic Intelligence from Open Sources (EIOS).
- From the calls and EIOS, four signals (2 -CSM, Diphtheria and Mpox) were picked and escalated to the corresponding TWG.

##### Cumulatively, from week 1 - 11

- 1352 calls were successfully routed to agents and answered.
- 20 Signals were picked and escalated.

Figure 22: Number of signals/events per week, 2025.

