



NIGERIA CENTRE FOR DISEASE
CONTROL AND PREVENTION

Nigeria Centre for Disease Control and Prevention

Protecting the health of Nigerians

Weekly Epidemiological Report

Week 8: 17th – 23rd February 2025

Highlight of the week

ENABLE 1.5 PROJECT: MONITORING LASSA FEVER THROUGH QUARTERLY FOLLOW-UP



Lassa fever continues to be a significant public health concern in Nigeria, with high rates of morbidity, mortality, and socio-economic impact. The ENABLE 1.5 project aims to estimate the sero-prevalence and sero-incidence of Lassa virus (LASV) infection in Lassa-endemic countries, including Nigeria.

The ENABLE 1.5 study commenced its T1 quarterly follow-up of participants at three Lassa fever-endemic sites in Nigeria: Federal Medical Centre (FMC) Owo, Irrua Specialist Teaching Hospital (ISTH), and Alex Ekwueme Federal University Teaching Hospital Abakaliki (AEFUTHA) with over 3000 participants enrolled.

The follow-up included:

- Blood sample collection for LASV and malaria testing
- Laboratory monitoring and support
- Audio hearing assessments for participants
- Data quality assurance and issue resolution
- Field documentation through photography and interviews

These activities were carried out in collaboration with Nigerian Centre for Disease Control and Prevention, NCDC and Coalition for Epidemic Preparedness Innovations (CEPI), and the participating health facilities.

ENABLE 1.5 continues to support Lassa fever control through high-quality surveillance and research, contributing to data-driven vaccine development and improved outbreak preparedness in Nigeria.

Summary of Incidents

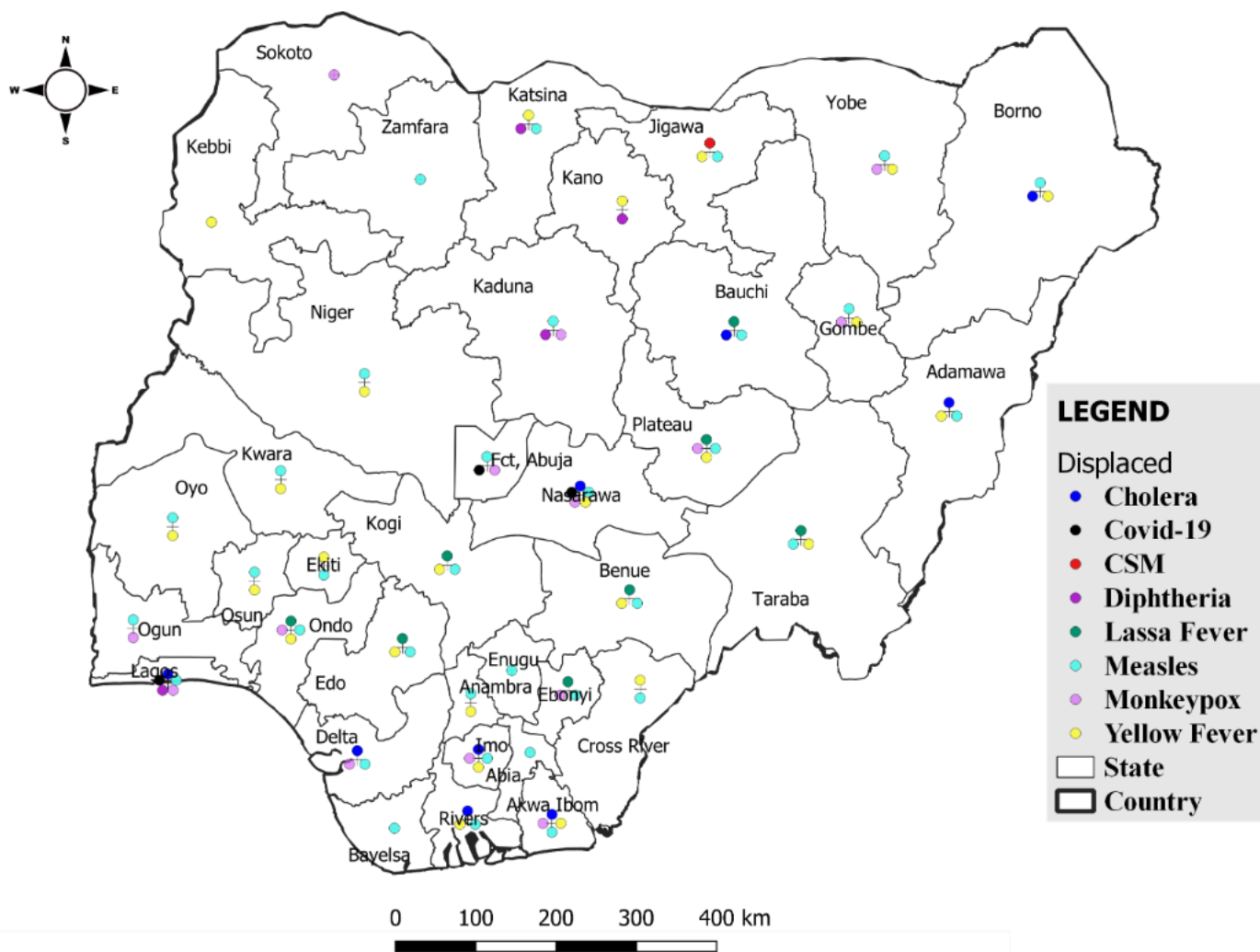
Ongoing incidents

5

The Ongoing incidents within the reporting week are Lassa Fever, Cholera, Mpox, CSM and Diphtheria.

**Ongoing incidents are defined as confirmed cases where a national EOC or equivalent has been activated.*

Figure 1: Priority Diseases under surveillance in Nigeria, week 8, 2025.



Summary of Diseases

Table 1: Week 8 (17th – 23rd February 2025)

Lassa Fever ₁	Cerebrospinal Meningitis (CSM) ₂	Yellow Fever ₂
314 Suspected case(s)	2 Suspected case(s)	3 Suspected case(s)
54 Confirmed case(s)	0 Confirmed case(s)	0 Confirmed case(s)
6 Death(s)	0 Death(s)	0 Death(s)
Cholera ₂	Measles ₂	Mpox ₂
18 Suspected case(s)	76 Suspected case(s)	47 Suspected case(s)
0 Confirmed case(s)	2 Confirmed case(s)	7 Confirmed case(s)
4 Death(s)	0 Death(s)	0 Death(s)
Acute Flaccid Paralysis (AFP) ₂	Coronavirus Disease ₂	Diphtheria ₂
67 Suspected case(s)	42 Suspected case(s)	111 Suspected case(s)
0 Confirmed case(s)	0 Confirmed case(s)	96 Confirmed case(s)
0 Death(s)	0 Death(s)	9 Death(s)
National Sentinel influenza surveillance ₃		
42 Suspected case(s)		
0 Confirmed case(s)		

Information for this disease was retrieved from the Technical Working Group and Situation Reports of Nigerian Centre for Disease Control and Prevention

1. Case Fatality Rate (CFR) for this disease is reported for confirmed cases only.
2. CFR for this disease is reported for total cases i.e. suspected + confirmed.
3. Information for sentinel influenza was retrieved from the laboratory.

Lassa Fever

Table 1: Week 8

Suspected cases	Confirmed cases	Deaths	Number of States and LGAs affected
314	54	6	State: 11 + FCT LGA: 26

Table 2: Lassa Fever Year to date (week 1 – 8, 2024/2025)

Suspected cases		Confirmed cases		Deaths		CFR	
2024	2025	2024	2025	2024	2025	2024	2025
3213	2492	573	506	108	95	18.8%	18.8%

Figure 2: Trend of suspected and confirmed cases of Lassa Fever by epidemiological week, 2025.

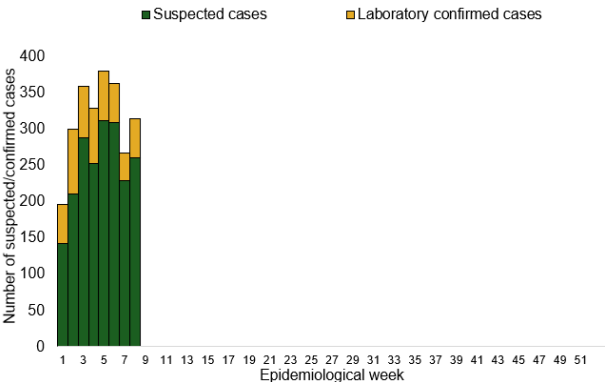
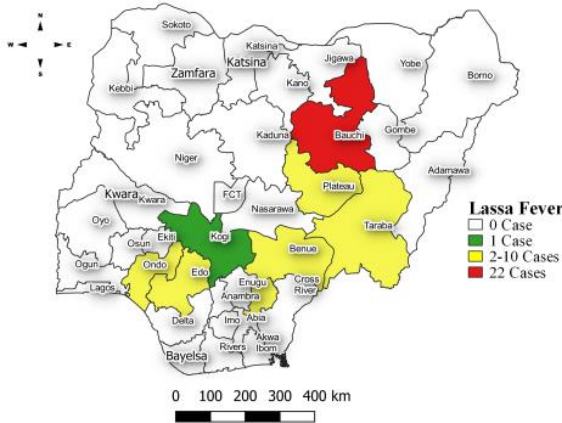


Figure 3: Confirmed cases of Lassa Fever by State, Nigeria, week 8, 2025.



Key points

- There were 314 suspected cases of Lassa Fever reported from 26 LGAs in 11 states and FCT. There were 54 laboratory confirmed cases and six deaths were recorded.

Actions

To date:

- National Lassa fever multi-partner, multi-sectoral Technical Working Group (TWG) continues to coordinate the response activities at all levels.
- Conducted the second monthly Webinar Series on Lassa fever Clinical Management (focused on addressing renal complications).

Cerebrospinal Meningitis (CSM)

Table 4: Week 8

Suspected cases	Confirmed cases	Deaths	Number of States and LGAs affected
2	0	0	State: 1 LGA: 2

Table 5: CSM Year to date (week 1 – 8, 2024/2025)

Suspected cases		Confirmed cases		Deaths		CFR	
2024	2025	2024	2025	2024	2025	2024	2025
975	149	22	16	62	12	6.4%	8.1%

Figure 4: Trend of suspected and confirmed cases of CSM by epidemiological week, 2025.

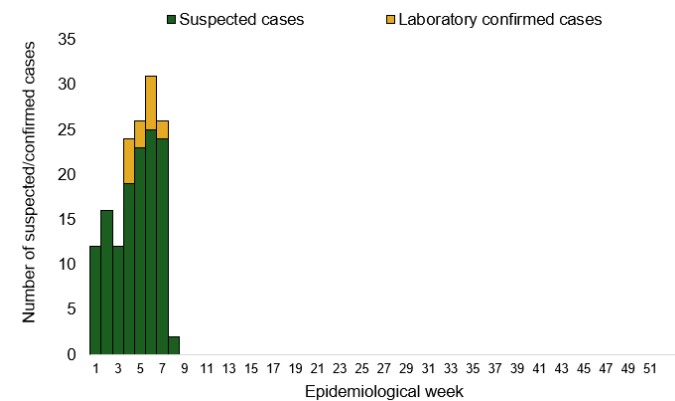
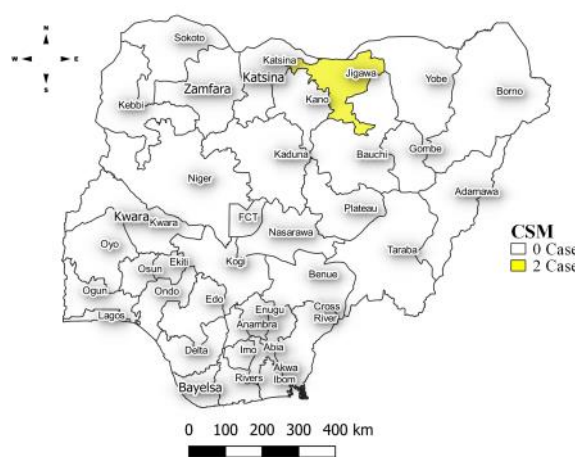


Figure 5: Suspected cases of CSM by State, Nigeria, week 8, 2025.



Key points

- There were two suspected cases of Cerebrospinal meningitis (CSM) reported from two LGAs in Jigawa state. There was no laboratory confirmed case and no death was recorded.

Actions

To date:

- National CSM multi-partner Technical Working Group (TWG) continues to coordinate activities across states.
- Activation of the national multi-sectoral EOC.
- Strengthening CSM culture testing across state-level laboratories.
- Shipment of aliquot samples for PCR at NCDC National Reference Laboratory (NRL) and CPHL, Lagos for molecular diagnosis (PCR).
- Onsite mentoring of Laboratorians on sample management by NRRT in Bauchi.

Yellow Fever

Table 6: Week 8

Suspected cases	Confirmed cases	Deaths	Number of States and LGAs affected
3	0	0	State: 3 LGA: 3

Table 7: Yellow Fever Year to date (week 1 – 8, 2024/2025)

Suspected cases		Confirmed cases		Deaths		CFR	
2024	2025	2024	2025	2024	2025	2024	2025
522	340	1	0	0	0	0%	0%

Figure 6: Trend of suspected and confirmed cases of Yellow Fever by epidemiological week, 2025.

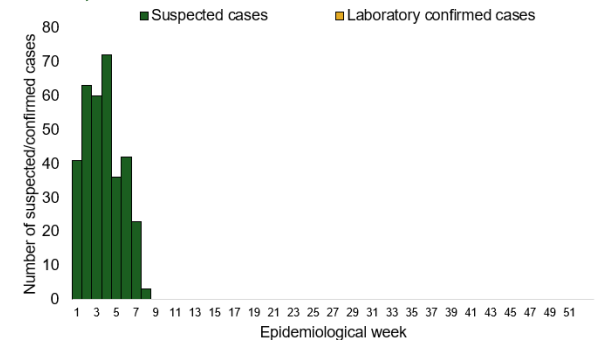
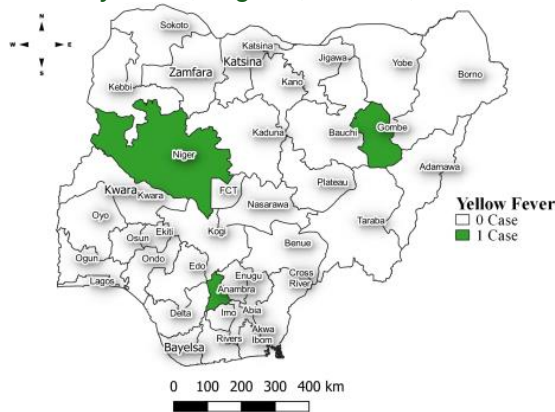


Figure 7: Suspected cases of Yellow Fever by State, Nigeria, week 8, 2025.



Key points

- There were three suspected cases of Yellow Fever (YF) reported from three LGAs in three states. There was no laboratory confirmed case and no death was recorded.

Actions

To date:

- National YF multi-partner Technical Working Group (TWG) continues to coordinate activities across states.
- Harmonizing surveillance and laboratory data.
- Provision of off-site surveillance support to affected States.

Cholera

Table 8: Week 8

Suspected cases	Confirmed cases	Deaths	Number of States and LGAs affected
18	0	4	State: 4 LGA: 6

Table 9: Cholera Year to date (week 1 – 8, 2024/2025)

Suspected cases		Confirmed cases		Deaths		CFR	
2024	2025	2024	2025	2024	2025	2024	2025
975	1113	1	27	13	28	1.3%	2.5%

Figure 8: Trend of suspected and confirmed cases of Cholera by epidemiological week, 2025.

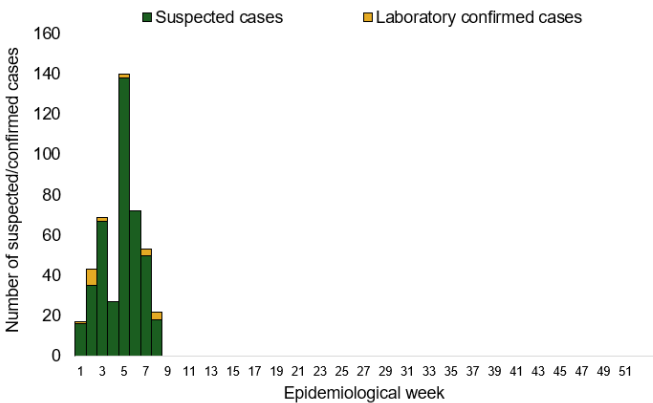
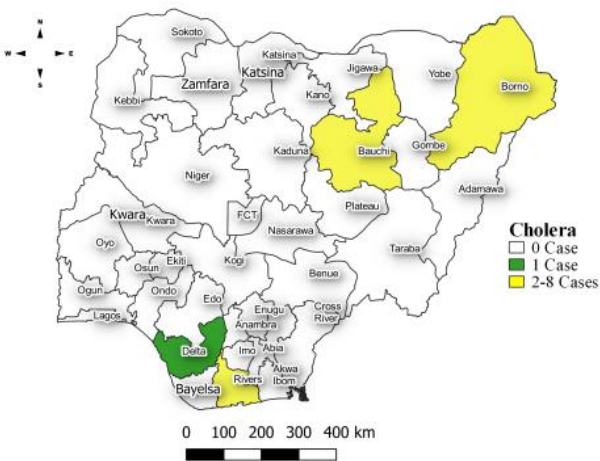


Figure 9: Trend of suspected and confirmed cases of Cholera, weeks 8, 2025.



Key points

- There were 18 suspected cases of Cholera reported from six LGAs in four states. There was no laboratory confirmed case and four deaths were recorded.

Actions

To date:

- National Cholera Multi-Sectoral Technical Working Group (TWG) is monitoring all states and supporting affected states.
- Cholera jingles are being aired in English and local languages.
- Epidemiological trend is being monitored to guide ICG request for planned vaccination campaigns.
- Essential response commodities are being distributed to all cholera affected states.

Measles

Table 10: Week 8

Suspected cases	Confirmed cases	Deaths	Number of States and LGAs affected
76	2	0	State: 16 LGA: 43

Table 11: Measles Year to date (week 1 – 8, 2024/2025)

Suspected cases		Confirmed cases		Deaths		CFR	
2024	2025	2024	2025	2024	2025	2024	2025
5826	2376	919	518	39	8	0.7%	0.3%

Figure 10: Trend of suspected and confirmed cases of Measles by epidemiological week, 2025.

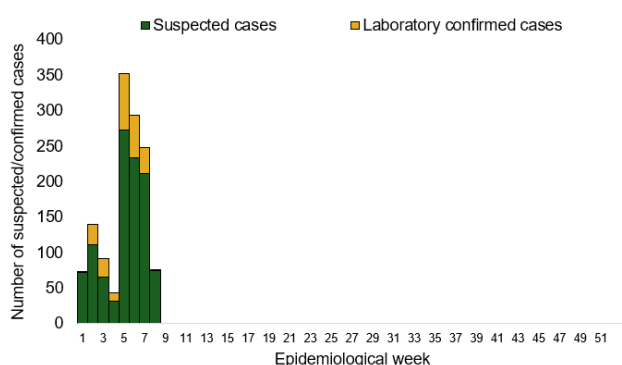
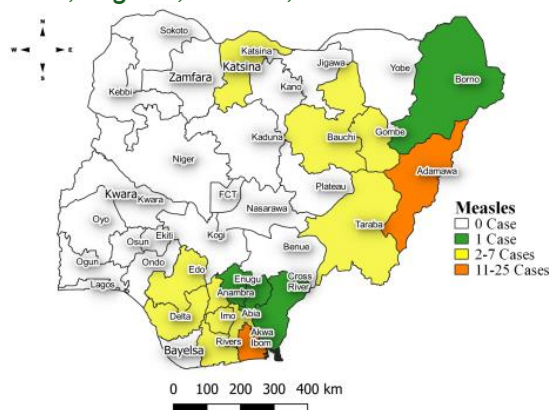


Figure 11: Suspected cases of Measles by State, Nigeria, week 8, 2025.



Key points

- There were 76 suspected cases of Measles reported from 43 LGAs in 16 states. There were two laboratory confirmed cases and no death was recorded.

Actions

To date:

- National Measles TWG is closely monitoring measles surveillance data and providing feedback to relevant agencies and development partners.
- Testing of samples ongoing in the eight Reference Laboratories across the country.
- Weekly harmonisation of laboratory results from across the laboratories ongoing.

Mpox

Table 12: Week 8

Suspected cases	Confirmed cases	Deaths	Number of States and LGAs affected
47	7	0	State: 13 + FCT LGA: 26

Table 13: Year to date (week 1 – 8, 2024/2025)

Suspected cases		Confirmed cases		Deaths		CFR	
2024	2025	2024	2025	2024	2025	2024	2025
158	370	6	66	0	2	0%	0.5%

Figure 12: Trend of suspected and confirmed cases of Mpox by epidemiological week, 2025.

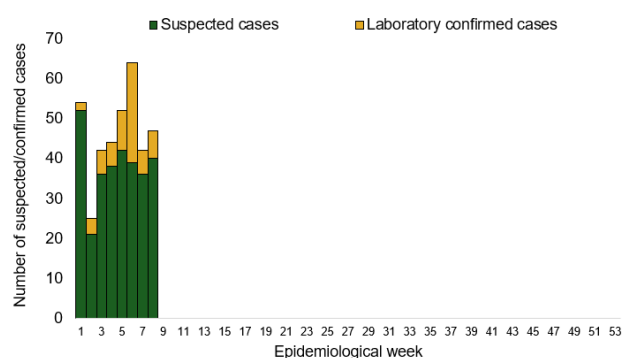
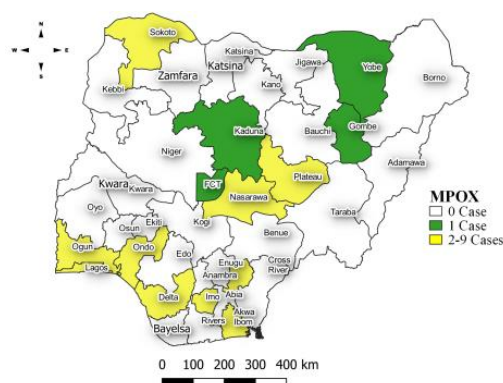


Figure 13: Suspected cases of Mpox by State, Nigeria, week 8, 2025.



Key points

- There were 47 suspected cases of Mpox reported from 26 LGAs in 13 states and FCT. There were seven laboratory confirmed cases and no death was recorded.

Actions

To date:

- National Monkeypox Technical Working Group (TWG) is monitoring activities in all states.
- Harmonisation of surveillance and laboratory data from across states and laboratories.
- Provision of off-site surveillance support to affected States.
- Weekly EOC meetings.

Acute Flaccid Paralysis (AFP)

Table 14: Week 8

Suspected cases	Confirmed cases	Deaths	Number of States and LGAs affected
67	0	0	State: 23 LGA: 56

Table 15: AFP Year to date (week 1 – 8, 2024/2025)

Suspected cases		Confirmed cases		Deaths		CFR	
2024	2025	2024	2025	2024	2025	2024	2025
1309	960	0	0	0	0	0%	0%

Figure 14: Trend of suspected and confirmed cases of AFP by epidemiological week, 2025.

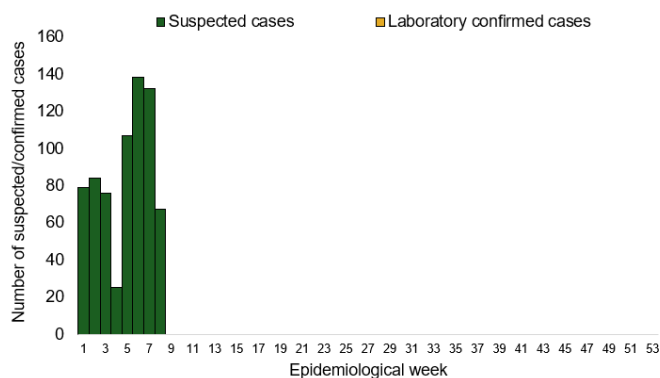
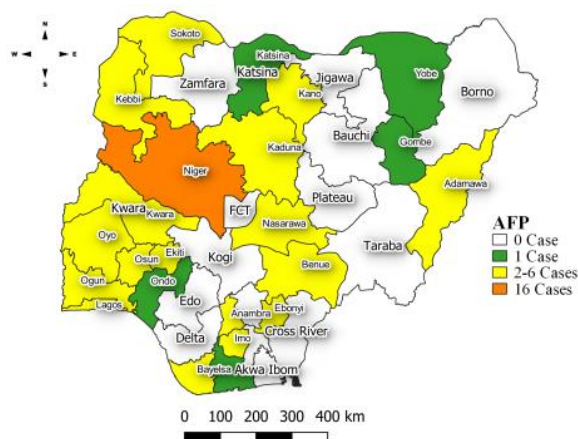


Figure 15: Suspected cases of AFP by State, Nigeria, week 8, 2025.



Key points

- There were 67 suspected cases of AFP reported from 56 LGAs in 23 states. There was no laboratory confirmed case and no death was recorded.

Coronavirus Disease (COVID-19)

Table 16: Week 8

Suspected cases	Confirmed cases	Deaths	Number of States and LGAs affected
42	0	0	State: 4 + FCT LGA: 13

Table 17: Covid 19 Year to date (Week 1- 8, 2024/2025)

Suspected cases		Confirmed cases		Deaths		CFR	
2024	2025	2024	2025	2024	2025	2024	2025
578	416	578	12	0	0	0%	0%

Figure 16: Trend of suspected and confirmed cases of Covid 19 by epidemiological week, 2025.

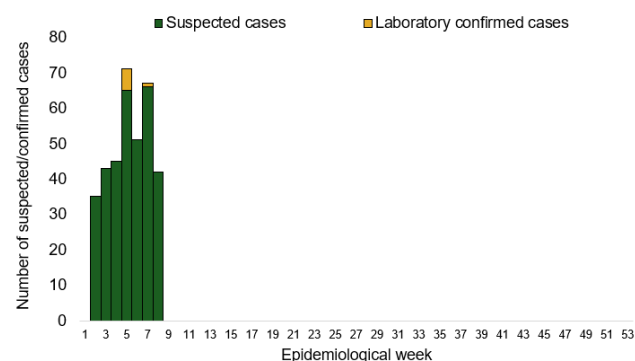
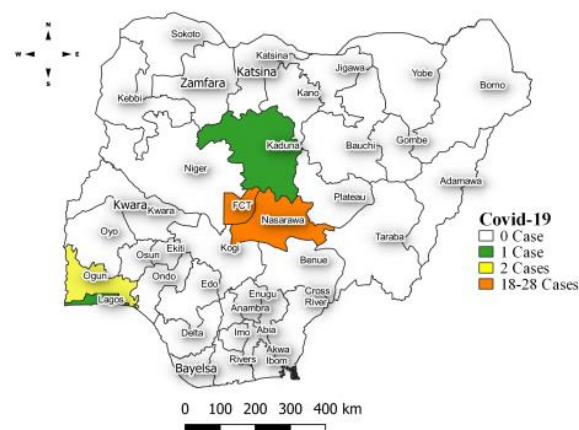


Figure 17: Suspected cases of Covid 19 by State, Nigeria, week 8, 2025.



Key points

- There were 42 suspected cases of Covid 19 reported from 13 LGAs in four states and FCT. There was no laboratory confirmed case and no death was recorded.

Actions

To date:

- National Covid 19 Technical Working Group (TWG) is monitoring activities in all states.
- Harmonisation of surveillance and laboratory data from across states and laboratories.
- Provision of off-site surveillance support to affected States.

Diphtheria

Table 18: Week 8

Suspected cases	Confirmed cases	Deaths	Number of States and LGAs affected
111	96	9	State: 4 LGA: 20

Table 19: Diphtheria Year to date (week 1 – 8, 2024/2025)

Suspected cases		Confirmed cases		Deaths		CFR	
2024	2025	2024	2025	2024	2025	2024	2025
4667	1348	2301	996	51	47	1.1%	3.5%

Figure 18: Trend of suspected and confirmed cases of Diphtheria by epidemiological week, 2025.

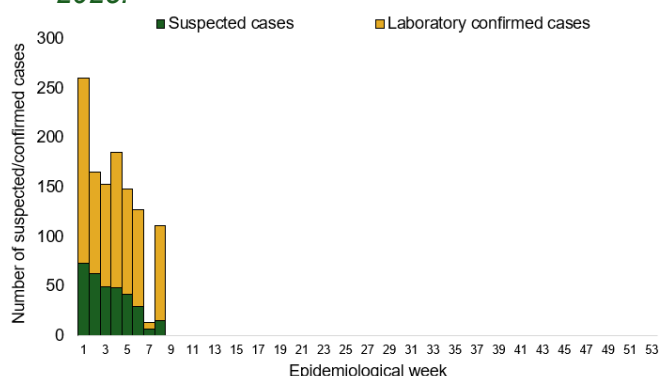
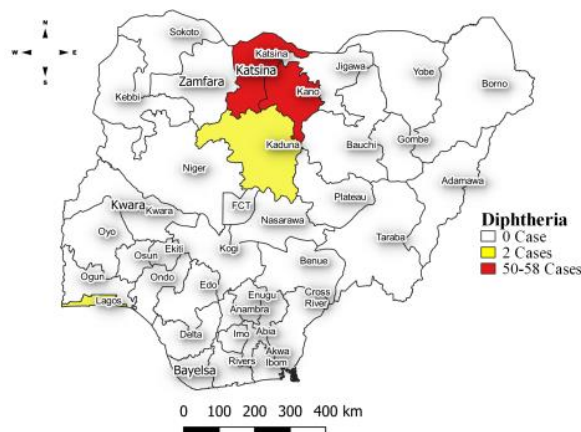


Figure 19: Suspected cases of Diphtheria by State, Nigeria, week 8, 2025.



Key points

- There were 111 suspected cases of Diphtheria reported from 20 LGAs in four states. There were 96 confirmed cases and nine deaths were recorded.

Actions

To date:

- National Diphtheria Technical Working Group (TWG) is monitoring activities in all states.
- Technical and offsite support provided to states on case identification, reporting and response especially non-reporting and low burden states.
- Data harmonization with laboratory and case management pillars.

National Influenza Sentinel Surveillance

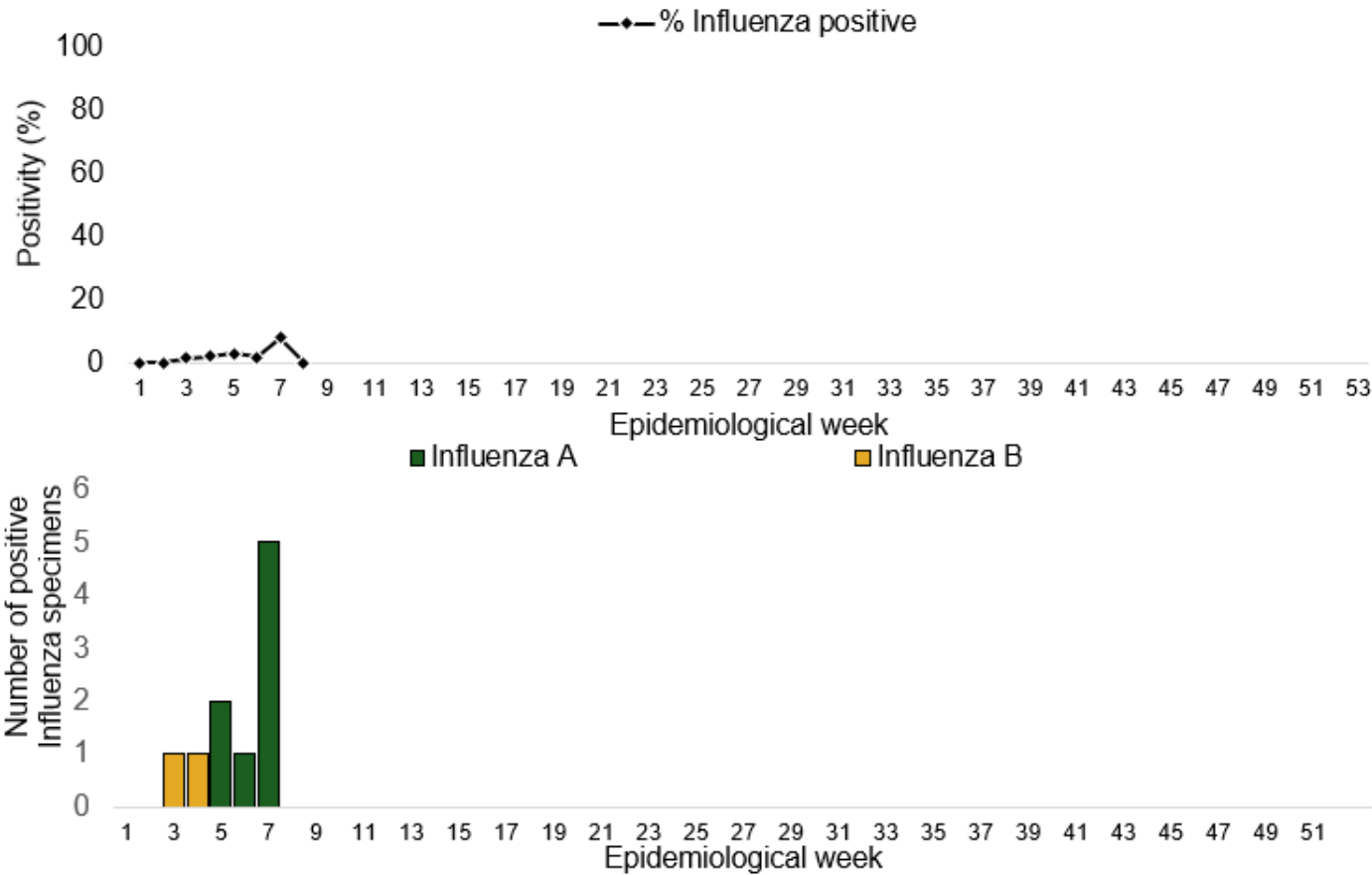
Table 20: Week 8

Suspected Cases	Confirmed Cases	Confirmed Case by type	
		Influenza A	Influenza B
42	0	0	0

Table 21: Influenza Year to date (week 1 – 8)

Suspected cases	Total Confirmed Cases	Confirmed cases by type	
		Influenza A	Influenza B
420	11	9	2

Figure 20: Number of influenza positive specimens by type and percentage positive by epidemiological week, 2025.



Event Based Surveillance (EBS)

Week 8

Key points

Epi Week 8

- 127 Calls were successfully routed to agents and answered.
- 500 articles scanned through Epidemic Intelligence from Open Sources (EIOS).
- From the calls and EIOS, one signal (Avian Influenza) was picked and escalated to the corresponding TWG.

Cumulatively, from week 1 - 8

- 1017 calls were successfully routed to agents and answered.
- 14 Signals were picked and escalated.

Figure 22: Number of signals/events per week, 2025.

