



NIGERIA CENTRE FOR DISEASE
CONTROL AND PREVENTION

Nigeria Centre for Disease Control and Prevention

Protecting the health of Nigerians

Weekly Epidemiological Report

Week 7: 10th – 16th February 2025

Highlight of the week

STRENGTHENING ACUTE FEBRILE ILLNESS (AFI) SURVEILLANCE IN NIGERIA



In a significant step toward improving disease detection and response, the NCDC recently convened a two-day strategic meeting on the 12th and 13th of February, 2025 in FCT, Abuja with key stakeholders, including State Epidemiologists, Acute Febrile Illness (AFI) Site Coordinators, and Laboratory Leads.

The focus of the meeting was to enhance AFI surveillance through coordinated efforts and strategic planning. Key objectives included:

- ✓ Establishing a Common Framework
- ✓ Reviewing Current Status
- ✓ Conducting Gap Analysis
- ✓ Collaborative Planning.
- ✓ Delivering Actionable Outcomes

The meeting concluded with a renewed commitment to standardized practices, improved coordination, and a more robust national AFI surveillance system.

Together, these efforts aim to strengthen Nigeria's preparedness and response to infectious disease outbreaks, ensuring timely detection and effective management.

Summary of Incidents

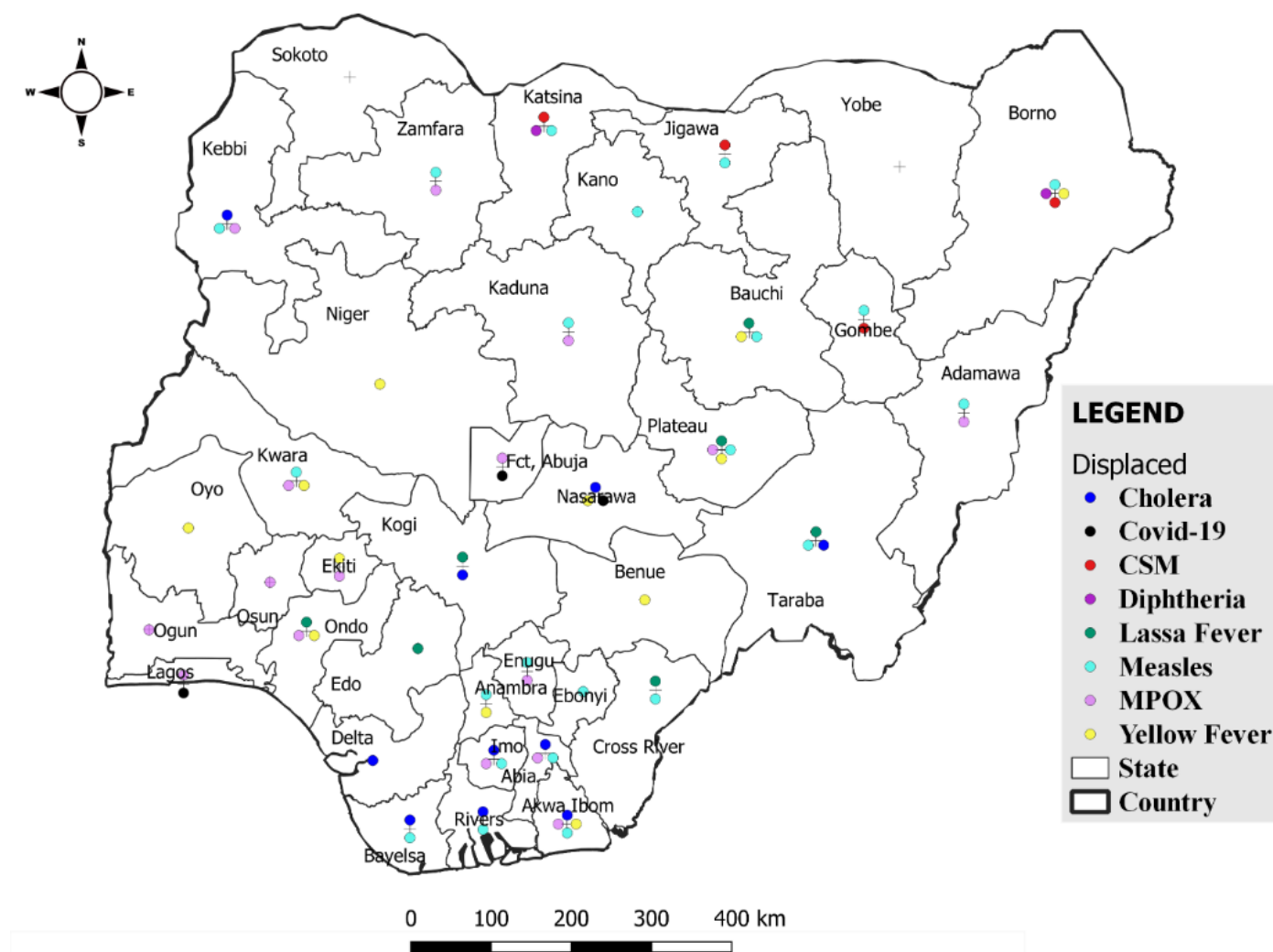
Ongoing incidents

4

The Ongoing incidents within the reporting week are Lassa Fever, Cholera, Mpox and Diphtheria.

**Ongoing incidents are defined as confirmed cases where a national EOC or equivalent has been activated.*

Figure 1: Priority Diseases under surveillance in Nigeria, week 7, 2025.



Summary of Diseases

Table 1: Week 7 (10th – 16th February 2025)

Lassa Fever ₁	Cerebrospinal Meningitis (CSM) ₂	Yellow Fever ₂
267 Suspected case(s)	26 Suspected case(s)	23 Suspected case(s)
38 Confirmed case(s)	2 Confirmed case(s)	0 Confirmed case(s)
9 Death(s)	1 Death(s)	0 Death(s)
Cholera ₂	Measles ₂	Mpox ₂
53 Suspected case(s)	248 Suspected case(s)	42 Suspected case(s)
3 Confirmed case(s)	36 Confirmed case(s)	6 Confirmed case(s)
5 Death(s)	0 Death(s)	1 Death(s)
Acute Flaccid Paralysis (AFP) ₂	Coronavirus Disease ₂	Diphtheria ₂
132 Suspected case(s)	67 Suspected case(s)	13 Suspected case(s)
0 Confirmed case(s)	1 Confirmed case(s)	7 Confirmed case(s)
0 Death(s)	0 Death(s)	0 Death(s)
National Sentinel influenza surveillance ₃		
64 Suspected case(s)		
5 Confirmed case(s)		

Information for this disease was retrieved from the Technical Working Group and Situation Reports of Nigerian Centre for Disease Control and Prevention

1. Case Fatality Rate (CFR) for this disease is reported for confirmed cases only.
2. CFR for this disease is reported for total cases i.e. suspected + confirmed.
3. Information for sentinel influenza was retrieved from the laboratory.

Lassa Fever

Table 1: Week 7

Suspected cases	Confirmed cases	Deaths	Number of States and LGAs affected
267	38	9	State: 12 + FCT LGA: 17

Table 2: Lassa Fever Year to date (week 1 – 7, 2024/2025)

Suspected cases		Confirmed cases		Deaths		CFR	
2024	2025	2024	2025	2024	2025	2024	2025
2629	2178	477	451	85	89	17.8%	19.7%

Figure 2: Trend of suspected and confirmed cases of Lassa Fever by epidemiological week, 2025.

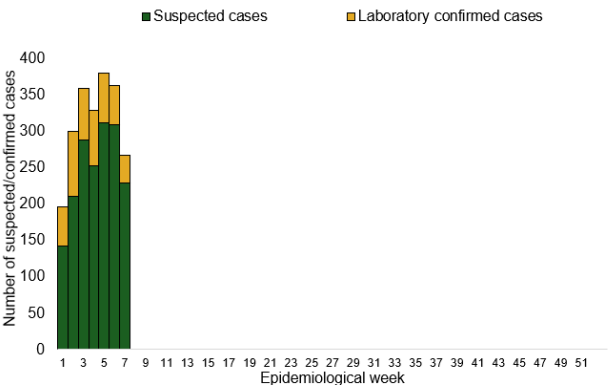
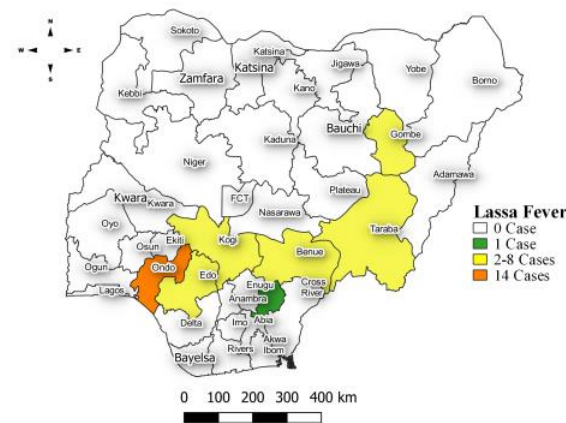


Figure 3: Confirmed cases of Lassa Fever by State, Nigeria, week 7, 2025.



Key points

- There were 267 suspected cases of Lassa Fever reported from 17 LGAs in 12 states and FCT. There were 38 laboratory confirmed cases and nine deaths were recorded.

Actions

To date:

- National Lassa fever multi-partner, multi-sectoral Technical Working Group (TWG) continues to coordinate the response activities at all levels.
- Lassa Fever Case Management needs assessment shared across the designated Treatment Centres.
- Weekly National risk communication stakeholders meeting.

Cerebrospinal Meningitis (CSM)

Table 4: Week 7

Suspected cases	Confirmed cases	Deaths	Number of States and LGAs affected
26	2	1	State: 6 LGA: 7

Table 5: CSM Year to date (week 1 – 7, 2024/2025)

Suspected cases		Confirmed cases		Deaths		CFR	
2024	2025	2024	2025	2024	2025	2024	2025
713	147	15	16	54	12	7.6%	8.2%

Figure 4: Trend of suspected and confirmed cases of CSM by epidemiological week, 2025.

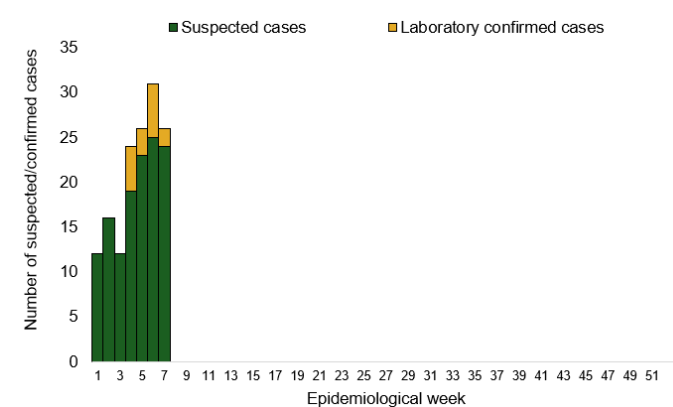
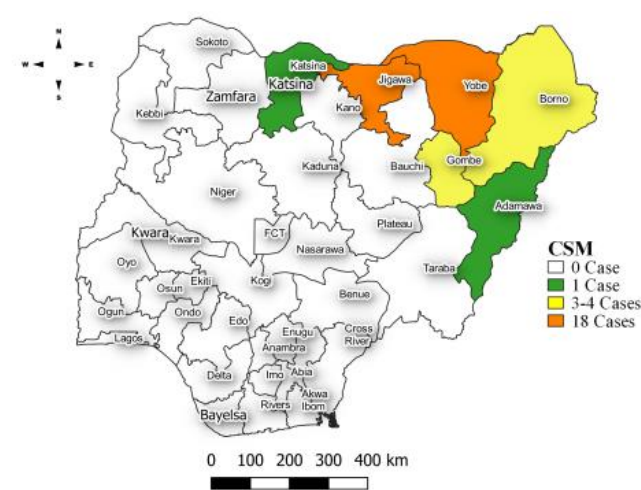


Figure 5: Suspected cases of CSM by State, Nigeria, week 7, 2025.



Key points

- There were 26 suspected cases of Cerebrospinal meningitis (CSM) reported from seven LGAs in six states. There were two laboratory confirmed cases and one death was recorded.

Actions

To date:

- National CSM multi-partner Technical Working Group (TWG) continues to coordinate activities across states.
- Risk assessment conducted to guide preparedness and response efforts in high-risk states.

Yellow Fever

Table 6: Week 7

Suspected cases	Confirmed cases	Deaths	Number of States and LGAs affected
23	0	0	State: 15 LGA: 22

Table 7: Yellow Fever Year to date (week 1 – 7, 2024/2025)

Suspected cases		Confirmed cases		Deaths		CFR	
2024	2025	2024	2025	2024	2025	2024	2025
469	337	1	0	0	0	0%	0%

Figure 6: Trend of suspected and confirmed cases of Yellow Fever by epidemiological week, 2025.

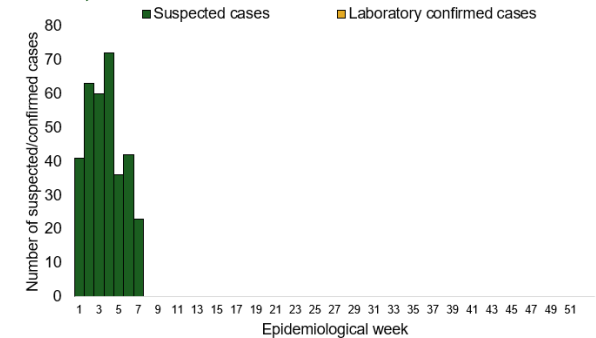
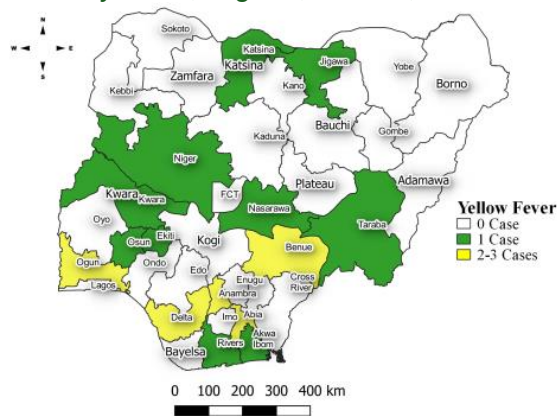


Figure 7: Suspected cases of Yellow Fever by State, Nigeria, week 7, 2025.



Key points

- There were 23 suspected cases of Yellow Fever (YF) reported from 22 LGAs in 15 states. There was no laboratory confirmed case and no death was recorded.

Actions

To date:

- National YF multi-partner Technical Working Group (TWG) continues to coordinate activities across states.
- Harmonizing surveillance and laboratory data.
- Provision of off-site surveillance support to affected States.

Cholera

Table 8: Week 7

Suspected cases	Confirmed cases	Deaths	Number of States and LGAs affected
53	3	5	State: 10 LGA: 12

Table 9: Cholera Year to date (week 1 – 7, 2024/2025)

Suspected cases		Confirmed cases		Deaths		CFR	
2024	2025	2024	2025	2024	2025	2024	2025
830	1095	1	27	10	24	1.2%	2.2%

Figure 8: Trend of suspected and confirmed cases of Cholera by epidemiological week, 2025.

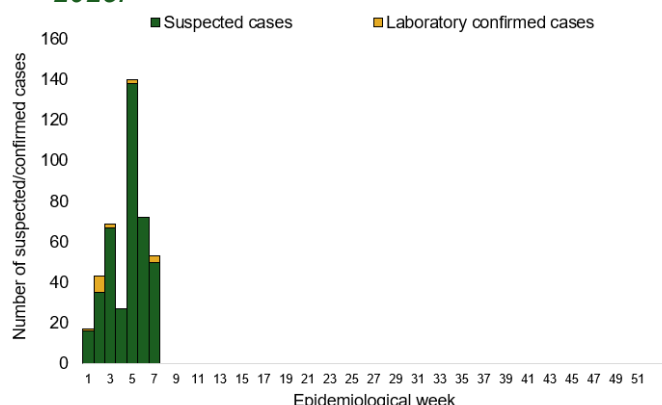
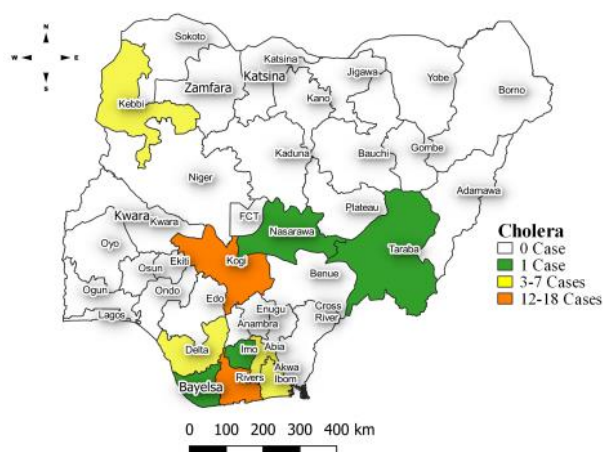


Figure 9: Trend of suspected and confirmed cases of Cholera, weeks 1 – 7, 2025.



Key points

- There were 53 suspected cases of Cholera reported from 12 LGAs in 10 states. There were three laboratory confirmed cases and three deaths were recorded.

Actions

To date:

- National Cholera Multi-Sectoral Technical Working Group (TWG) is monitoring all states and supporting affected states.
- Essential response commodities are being distributed to all cholera affected states.
- Training of laboratory staff on sample collection, diagnosis and reporting.
- Identification of laboratories for possible optimization for cholera diagnosis.

Measles

Table 10: Week 7

Suspected cases	Confirmed cases	Deaths	Number of States and LGAs affected
248	36	0	State: 28 LGA: 112

Table 11: Measles Year to date (week 1 – 7, 2024/2025)

Suspected cases		Confirmed cases		Deaths		CFR	
2024	2025	2024	2025	2024	2025	2024	2025
5034	2300	799	516	34	0	0.7%	0%

Figure 10: Trend of suspected and confirmed cases of Measles epidemiological week, 2025.

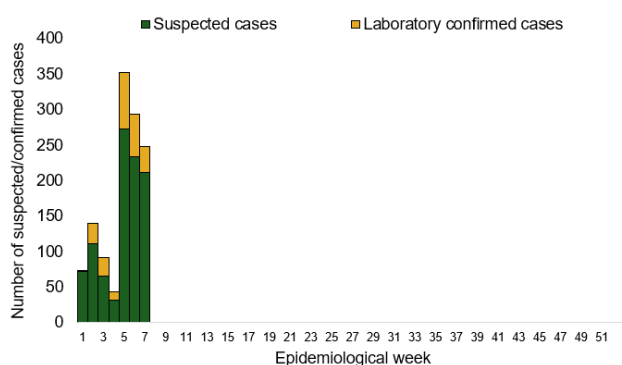
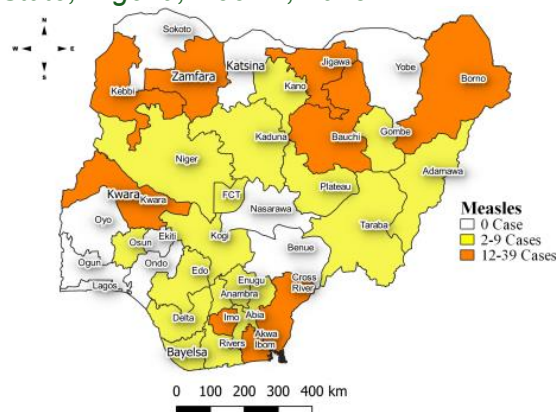


Figure 11: Suspected cases of Measles by State, Nigeria, week 7, 2025.



Key points

- There were 248 suspected cases of Measles reported from 112 LGAs in 22 states. There were 36 laboratory confirmed cases and no death was recorded.

Actions

To date:

- National Measles TWG is closely monitoring measles surveillance data and providing feedback to relevant agencies and development partners.
- Testing of samples ongoing in the eight Reference Laboratories across the country.
- Weekly harmonisation of laboratory results from across states.
- Weekly feedback of key performance indicators to measles laboratories.

Mpox

Table 12: Week 7

Suspected cases	Confirmed cases	Deaths	Number of States and LGAs affected
42	6	1	State: 15 + FCT LGA: 42

Table 13: Year to date (week 1 – 7, 2024/2025)

Suspected cases		Confirmed cases		Deaths		CFR	
2024	2025	2024	2025	2024	2025	2024	2025
116	323	6	59	0	2	0%	0.6%

Figure 12: Trend of suspected and confirmed cases of Mpox by epidemiological week, 2025.

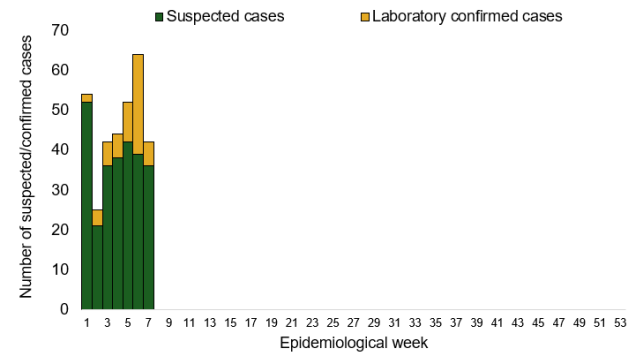
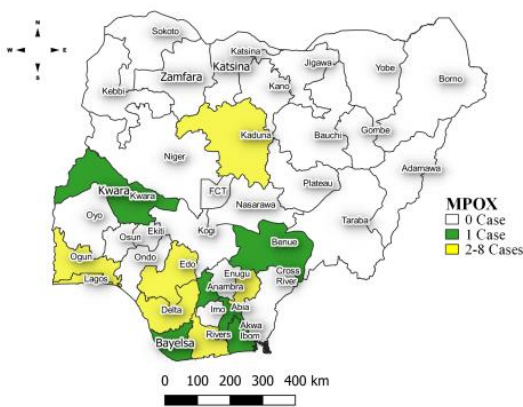


Figure 13: Suspected cases of Mpox by State, Nigeria, week 7, 2025.



Key points

- There were 42 suspected cases of Mpox reported from 42 LGAs in 15 states and FCT. There were six laboratory confirmed cases and one death was recorded.

Actions

To date:

- National Monkeypox Technical Working Group (TWG) is monitoring activities in all states.
- Harmonisation of surveillance and laboratory data from across states and laboratories.
- Provision of off-site surveillance support to affected States.
- Weekly EOC meetings.

Acute Flaccid Paralysis (AFP)

Table 14: Week 7

Suspected cases	Confirmed cases	Deaths	Number of States and LGAs affected
132	0	0	State: 28 LGA: 100

Table 15: AFP Year to date (week 1 – 7, 2024/2025)

Suspected cases		Confirmed cases		Deaths		CFR	
2024	2025	2024	2025	2024	2025	2024	2025
1124	641	0	0	0	0	0%	0%

Figure 14: Trend of suspected and confirmed cases of AFP by epidemiological week, 2025.

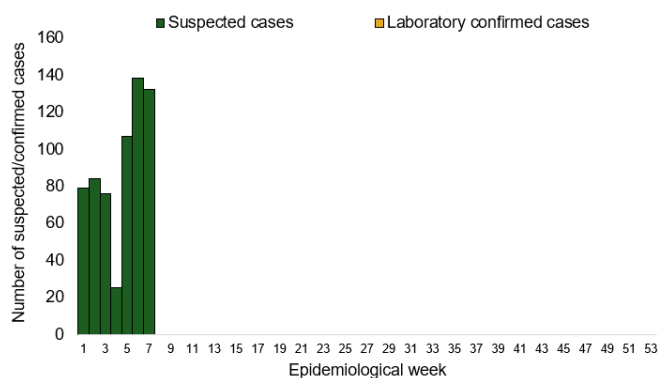
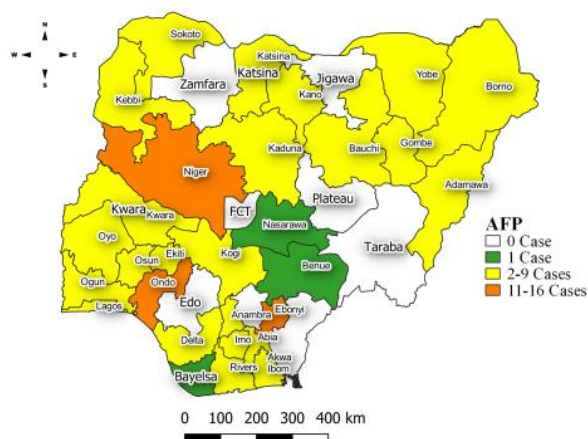


Figure 15: Suspected cases of AFP by State, Nigeria, week 7, 2025.



Key points

- There were 132 suspected cases of AFP reported from 100 LGAs in 28 states. There was no laboratory confirmed case and no death was recorded.

Coronavirus Disease (COVID-19)

Table 16: Week 7

Suspected cases	Confirmed cases	Deaths	Number of States and LGAs affected
67	1	0	State: 3 + FCT LGA: 24

Table 17: Covid 19 Year to date (Week 1- 7, 2024/2025)

Suspected cases		Confirmed cases		Deaths		CFR	
2024	2025	2024	2025	2024	2025	2024	2025
464	374	464	12	0	0	0%	0%

Figure 16: Trend of suspected and confirmed cases of Covid 19 by epidemiological week, 2025.

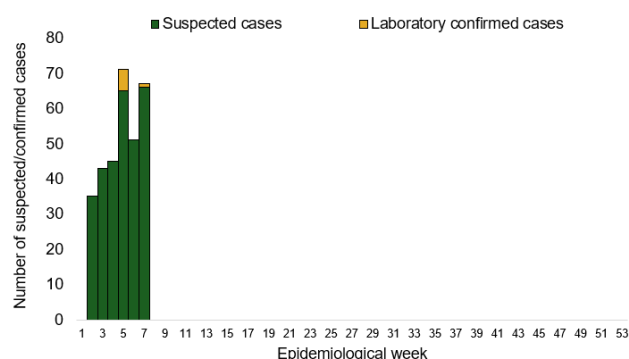
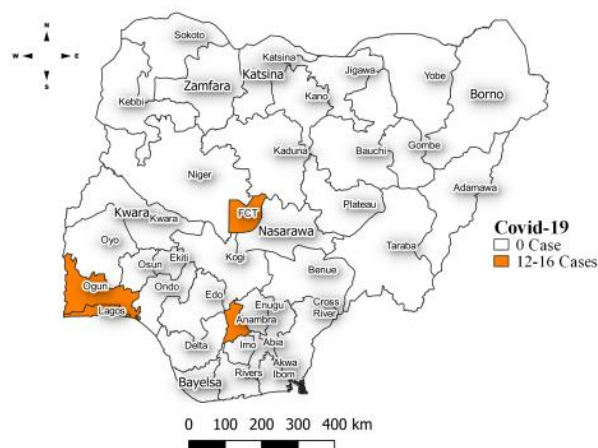


Figure 17: Suspected cases of Covid 19 by State, Nigeria, week 7, 2025



Key points

- There were 67 suspected cases of Covid 19 reported from 24 LGAs in three states and FCT. There was one laboratory confirmed case and no death was recorded.

Actions

To date:

- National Covid 19 Technical Working Group (TWG) is monitoring activities in all states.
- Harmonisation of surveillance and laboratory data from across states and laboratories.
- Provision of off-site surveillance support to affected States.

Diphtheria

Table 18: Week 7

Suspected cases	Confirmed cases	Deaths	Number of States and LGAs affected
128	112	6	State: 4 LGA: 20

Table 19: Diphtheria Year to date (week 1 – 7, 2024/2025)

Suspected cases		Confirmed cases		Deaths		CFR	
2024	2025	2024	2025	2024	2025	2024	2025
4014	1016	1954	693	44	22	1.1%	2.2%

Figure 18: Trend of suspected and confirmed cases of Diphtheria by epidemiological week, 2025.

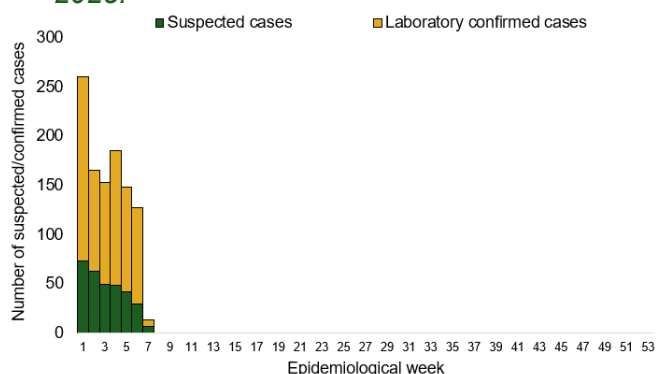
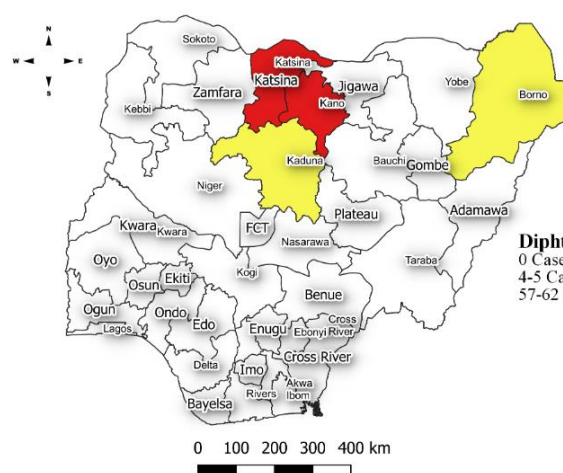


Figure 19: Suspected cases of Diphtheria by State, Nigeria, week 7, 2025.



Key points

- There were 128 suspected cases of Diphtheria reported from 20 LGAs in four states. There were 112 confirmed cases and six deaths were recorded.

Actions

To date:

- National Diphtheria Technical Working Group (TWG) is monitoring activities in all states.
- Preliminary and confirmatory testing at sub-national and national level, respectively.
- Antimicrobial Susceptibility Testing of Diphtheria isolates is ongoing
- Analysis of sequenced *Corynebacterium diphtheriae* isolates.
- Diphtheria Proficiency Testing for Laboratories.
- Routine Immunization services across healthcare facilities.

National Influenza Sentinel Surveillance

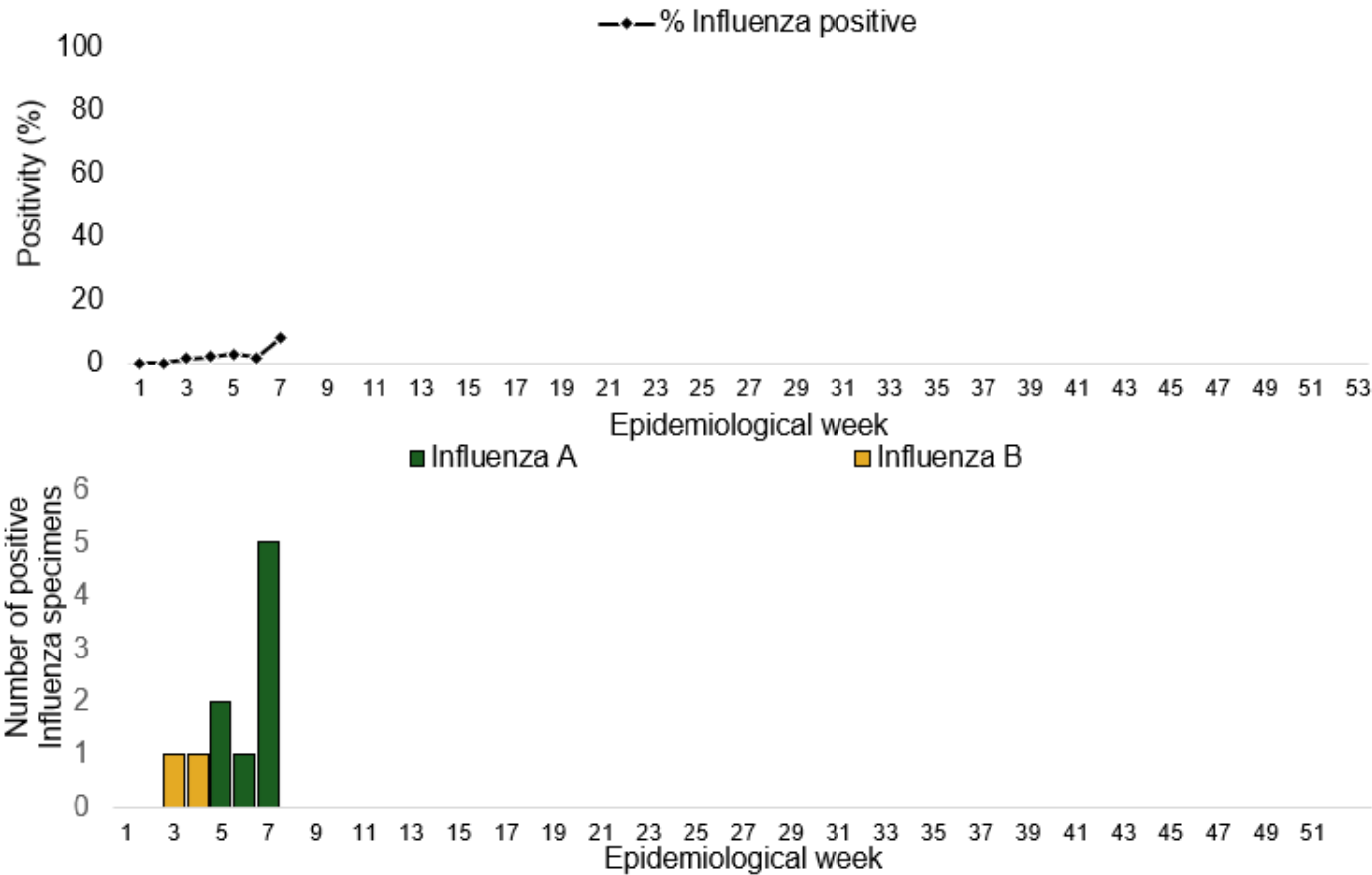
Table 20: Week 7

Suspected Cases	Confirmed Cases	Confirmed Case by type	
		Influenza A	Influenza B
64	5	5	0

Table 21: Year to date (week 1 – 7)

Suspected cases	Total Confirmed Cases	Confirmed cases by type	
		Influenza A	Influenza B
373	11	9	2

Figure 20: Number of influenza positive specimens by type and percentage positive by epidemiological week, 2025.



Event Based Surveillance (EBS)

Week 7

Key points

Epi Week 7

- 114 Calls were successfully routed to agents and answered.
- 451 articles scanned through Epidemic Intelligence from Open Sources (EIOS).
- From the calls and EIOS, two signals (AFP and Lassa Fever) were picked and escalated to the corresponding TWG.

Cumulatively, from week 1 - 7

- 890 calls were successfully routed to agents and answered.
- 13 Signals were picked and escalated.

Figure 22: Number of signals/events per week, 2025.

Signals

