



NIGERIA CENTRE FOR DISEASE  
CONTROL AND PREVENTION

**Nigeria Centre for Disease Control and Prevention**

*Protecting the health of Nigerians*

## **Weekly Epidemiological Report**

**Week 5: 27<sup>th</sup> January – 2<sup>nd</sup> February 2025**

### **Highlight of the week**

## **NCDC, APCOM STRENGTHEN TIES TO BOOST MEDICAL EDUCATION AND PUBLIC HEALTH**



The Director General of the Nigeria Centre for Disease Control and Prevention (NCDC), Dr. Jide Idris, welcomed a delegation from the Association of Provosts of Colleges of Medicine in Nigeria (APCOM) on a courtesy visit to his office on the 30<sup>th</sup> of January, 2025.

The team was led by Professor Sulyman Alabi, Chairman of APCOM, who emphasized the importance of collaboration between the NCDC and medical colleges across the country. He highlighted key areas of potential partnership, including research, infrastructure development, medical equipment, and capacity-building through training.

Dr. Idris commended the initiative and expressed the NCDC's commitment to strengthening ties with academic institutions to enhance Nigeria's healthcare system and public health preparedness.

## Summary of Incidents

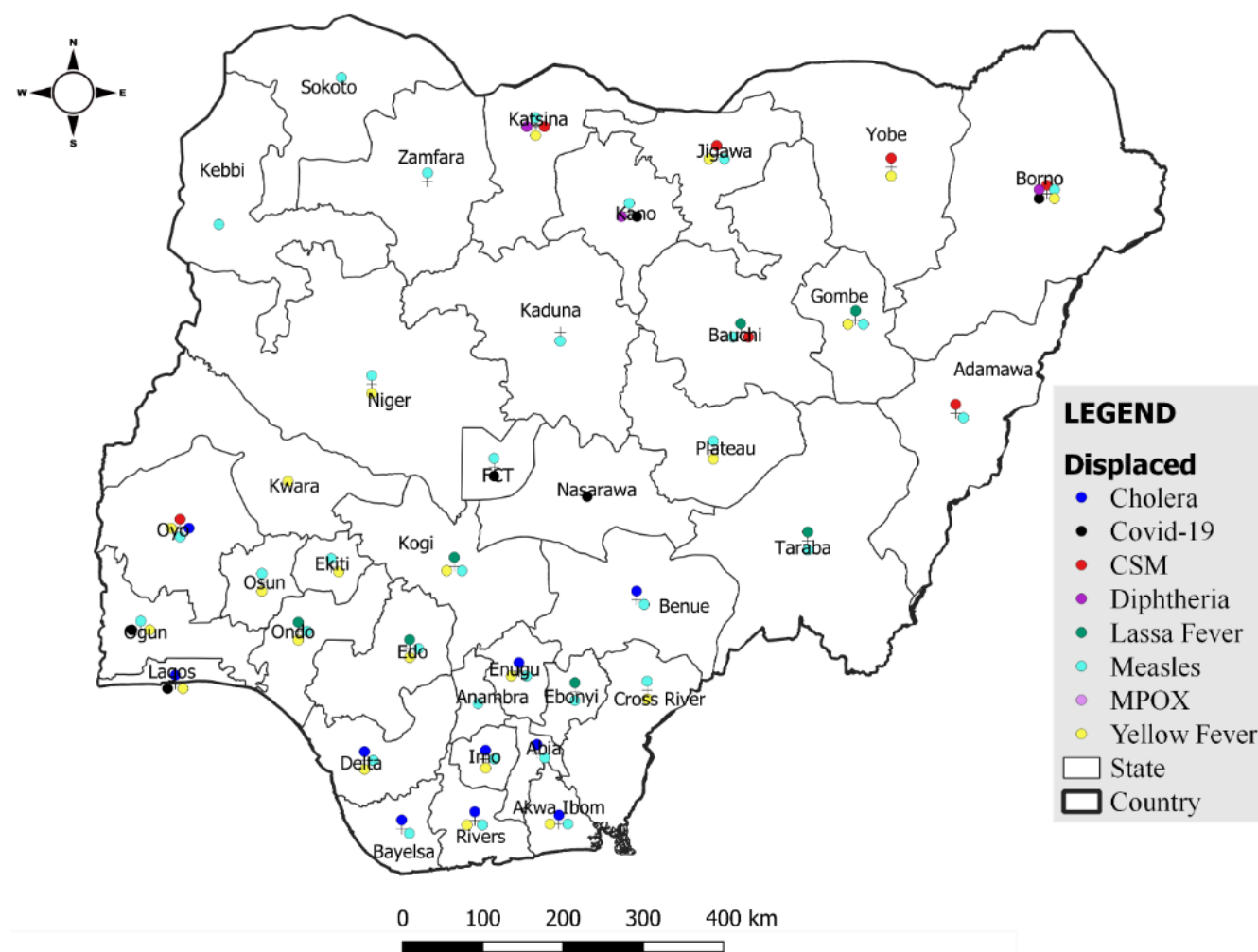
### Ongoing incidents

4

The Ongoing incidents within the reporting week are Lassa Fever, Cholera, Mpox and Diphtheria.

*\*Ongoing incidents are defined as confirmed cases where a national EOC or equivalent has been activated.*

Figure 1: Priority Diseases under surveillance in Nigeria, week 5, 2025.



## Summary of Diseases

**Table 1: Week 5 (27<sup>th</sup> January – 2<sup>nd</sup> February 2025)**

Lassa Fever <sub>1</sub>	Cerebrospinal Meningitis (CSM) <sub>2</sub>	Yellow Fever <sub>2</sub>
379 Suspected case(s)	26 Suspected case(s)	36 Suspected case(s)
68 Confirmed case(s)	3 Confirmed case(s)	0 Confirmed case(s)
17 Death(s)	2 Death(s)	0 Death(s)
Cholera <sub>2</sub>	Measles <sub>2</sub>	Mpox <sub>2</sub>
140 Suspected case(s)	352 Suspected case(s)	52 Suspected case(s)
2 Confirmed case(s)	79 Confirmed case(s)	10 Confirmed case(s)
0 Death(s)	0 Death(s)	0 Death(s)
Acute Flaccid Paralysis (AFP) <sub>2</sub>	Coronavirus Disease <sub>2</sub>	Diphtheria <sub>2</sub>
107 Suspected case(s)	71 Suspected case(s)	148 Suspected case(s)
0 Confirmed case(s)	6 Confirmed case(s)	107 Confirmed case(s)
0 Death(s)	0 Death(s)	1 Death(s)
National Sentinel influenza surveillance <sub>3</sub>		
71 Suspected case(s)		
2 Confirmed case(s)		

Information for this disease was retrieved from the Technical Working Group and Situation Reports of Nigerian Centre for Disease Control and Prevention

1. Case Fatality Rate (CFR) for this disease is reported for confirmed cases only.
2. CFR for this disease is reported for total cases i.e. suspected + confirmed.
3. Information for sentinel influenza was retrieved from the laboratory.

Lassa Fever

Table 2: Week 5

Suspected cases	Confirmed cases	Deaths	Number of States and LGAs affected
379	68	17	State: 11 LGA: 23

Table 3: Lassa Fever Year to date (week 1 – 5, 2024/2025)

Suspected cases		Confirmed cases		Deaths		CFR	
2024	2025	2024	2025	2024	2025	2024	2025
1667	1552	328	358	63	70	19.2%	19.6%

Figure 2: Trend of suspected and confirmed cases of Lassa Fever by epidemiological week, 2025.

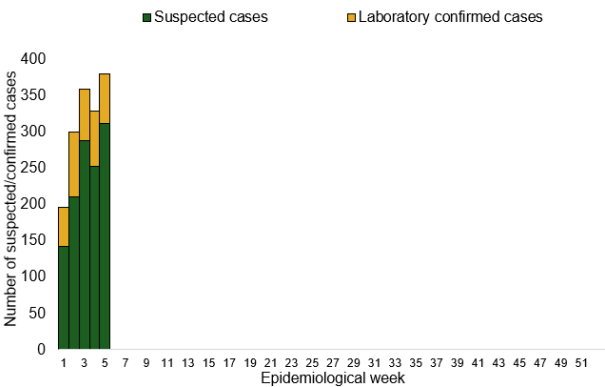
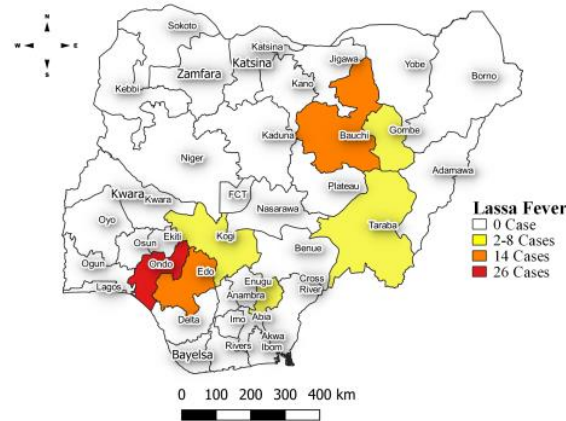


Figure 3: Confirmed cases of Lassa Fever by State, Nigeria, week 5, 2025.



Key points

- There were 379 suspected cases of Lassa Fever reported from 23 LGAs in 11 states. There were 68 laboratory confirmed cases and 17 deaths were recorded.

Actions

To date:

- National Lassa fever multi-partner, multi-sectoral Technical Working Group (TWG) continues to coordinate the response activities at all levels.
- Ongoing Lassa Fever case management needs assessment in the designated Treatment Centres.
- Participated in the official handing over of laboratory equipment by IHVN to the Ondo State Public Health laboratory.
- Held bilateral discussions with MSF Geneva on mutual areas of collaboration for Lassa fever.
- Identified areas of mutual collaboration with Nigeria Health Watch.

Cerebrospinal Meningitis (CSM)

Table 4: Week 5

Suspected cases	Confirmed cases	Deaths	Number of States and LGAs affected
26	3	2	State: 7 LGA: 13

Table 5: CSM Year to date (week 1 – 5, 2024/2025)

Suspected cases		Confirmed cases		Deaths		CFR	
2024	2025	2024	2025	2024	2025	2024	2025
495	90	14	8	42	7	8.5%	7.8%

Figure 4: Trend of suspected and confirmed cases of CSM by epidemiological week, 2025.

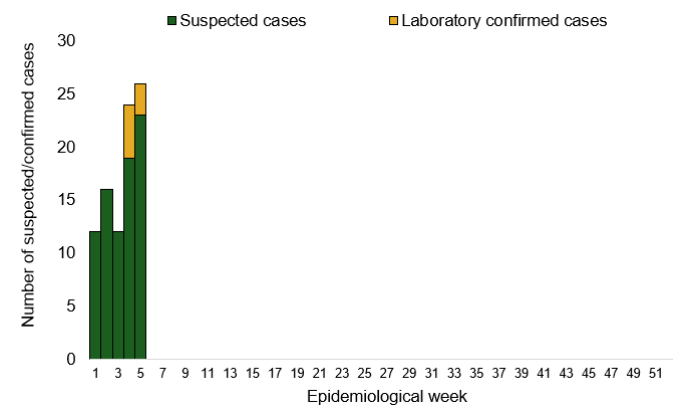
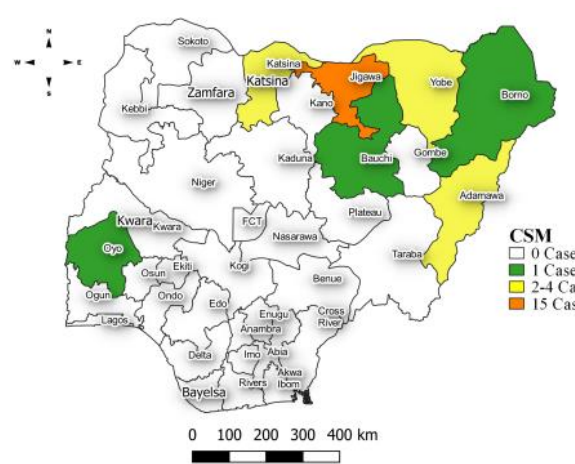


Figure 5: Suspected cases of CSM by State, Nigeria, week 5, 2025.



Key points

- There were 26 suspected cases of Cerebrospinal meningitis (CSM) reported from 13 LGAs in seven states. There were three laboratory confirmed cases and two deaths were recorded.

Actions

To date:

- National CSM multi-partner Technical Working Group (TWG) continues to coordinate activities across states.
- Provision of technical support and response commodities to affected states.
- Management of suspected/confirmed cases at designated treatment centers across the states.

Yellow Fever

Table 6: Week 5

Suspected cases	Confirmed cases	Deaths	Number of States and LGAs affected
36	0	0	State: 22 LGA: 34

Table 7: Yellow Fever Year to date (week 1 – 5, 2024/2025)

Suspected cases		Confirmed cases		Deaths		CFR	
2024	2025	2024	2025	2024	2025	2024	2025
307	272	0	0	0	0	0%	0%

Figure 6: Trend of suspected and confirmed cases of Yellow Fever by epidemiological week, 2025.

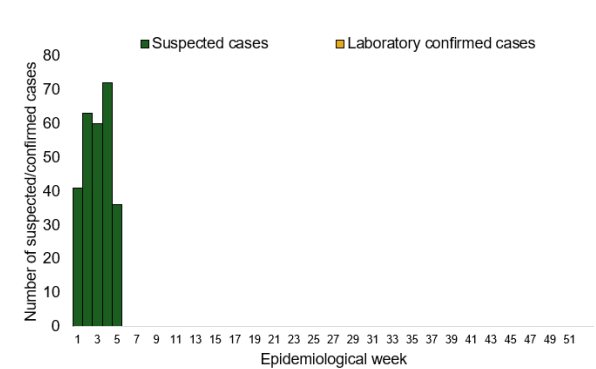
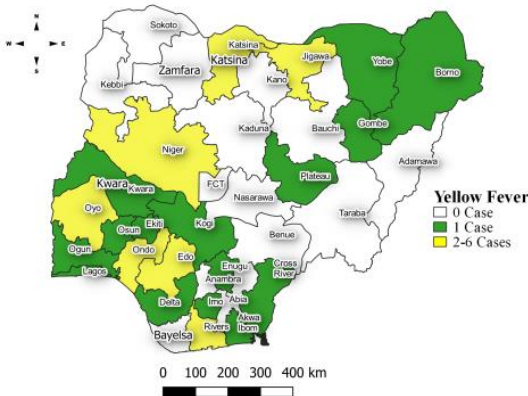


Figure 7: Suspected cases of Yellow Fever by State, Nigeria, week 5, 2025.



Key points

- There were 36 suspected cases of Yellow Fever (YF) reported from 34 LGA in 22 states. There was no laboratory confirmed case and no death was recorded.

Actions

To date:

- National YF multi-partner Technical Working Group (TWG) continues to coordinate activities across states.
- Conducting monthly TWG meeting.
- Following up with states via phone calls.
- Provision of off-site surveillance support to affected States.
- Updating backlogs of laboratory results.



Cholera

Table 8: Week 5

Suspected cases	Confirmed cases	Deaths	Number of States and LGAs affected
140	2	0	State: 10 LGA: 18

Table 9: Cholera Year to date (week 1 – 5, 2024/2025)

Suspected cases		Confirmed cases		Deaths		CFR	
2024	2025	2024	2025	2024	2025	2024	2025
512	970	1	24	4	16	0.8%	1.6%

Figure 8: Trend of suspected and confirmed cases of Cholera by epidemiological week, 2025.

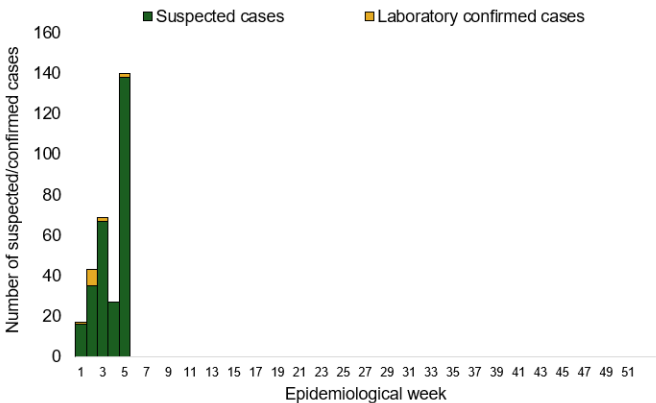
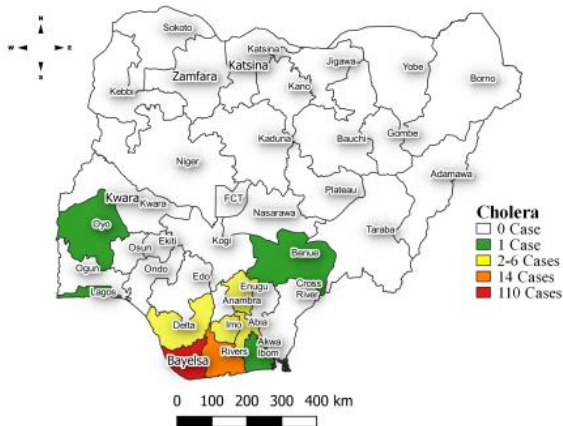


Figure 8: Suspected cases of Cholera by State, Nigeria, week 5, 2025.



Key points

- There were 140 suspected cases of Cholera reported from 18 LGAs in 10 states. There were two laboratory confirmed cases and no death was recorded.

Actions

To date:

- National Cholera Multi-Sectoral Technical Working Group (TWG) is monitoring all states and supporting affected states.
- Activation of Emergency Operating Centre (EOC).
- Response is being coordinated by the national multi-sectoral TWG hosted at NCDC, in collaboration with Federal Ministry of Health (FMOH), Federal Ministry of Water Resources (FMWR), Federal Ministry of Environment (FMEnv), National Primary Health Care Development Agency (NPHCDA) and Development Partners.
- Ongoing surveillance in all states through the routine Integrated Disease Surveillance and Response (IDSR) and Event Based Surveillance (EBS).

## Measles

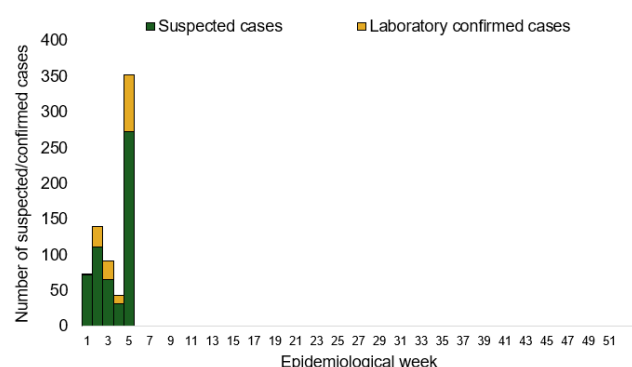
**Table 10: Week 5**

Suspected cases	Confirmed cases	Deaths	Number of States and LGAs affected
352	79	0	State: 34 LGA: 164

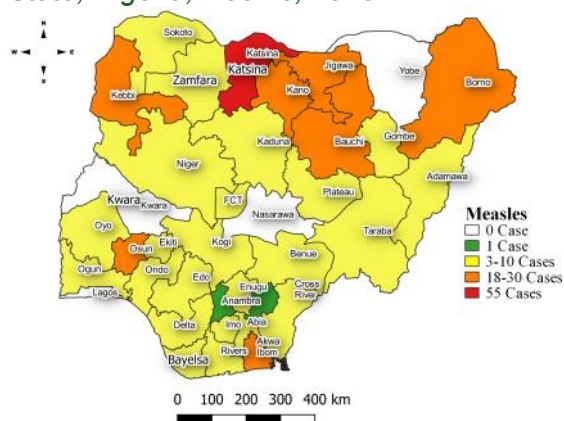
**Table 11: Measles Year to date (week 1 – 5, 2024/2025)**

Suspected cases		Confirmed cases		Deaths		CFR	
2024	2025	2024	2025	2024	2025	2024	2025
3650	1759	520	420	32	0	0.8%	0%

*Figure 10: Trend of suspected and confirmed cases of Measles by epidemiological week, 2025.*



*Figure 11: Suspected cases of Measles by State, Nigeria, week 5, 2025.*



## Key points

- There were 352 suspected cases of Measles reported from 164 LGAs in 34 states. There were 79 laboratory confirmed cases and no death was recorded.

## Actions

### To date:

- National Measles TWG is closely monitoring measles surveillance data and providing feedback to relevant agencies and development partners.
- Testing of samples in the eight Reference Laboratories across the country.



Mpox

Table 12: Week 5

Suspected cases	Confirmed cases	Deaths	Number of States and LGAs affected
52	10	0	State: 14 LGA: 52

Table 13: Mpox Year to date (week 1 – 5, 2024/2025)

Suspected cases		Confirmed cases		Deaths		CFR	
2024	2025	2024	2025	2024	2025	2024	2025
64	217	0	28	0	0	0%	0%

Figure 12: Trend of suspected and confirmed cases of Mpox by epidemiological week, 2025.

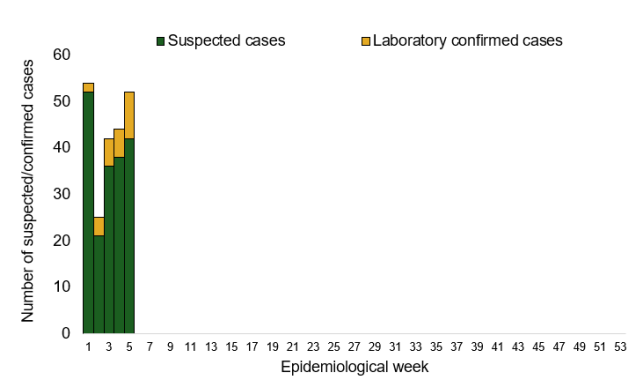
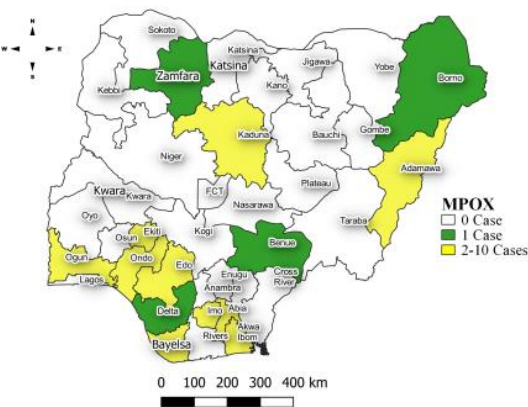


Figure 13: Suspected cases of Mpox by State, Nigeria, week 5, 2025.



Key points

- There were 52 suspected cases of Mpox reported from 52 LGAs in 14 states. There were ten laboratory confirmed cases and no death was recorded.

Actions

To date:

- National Monkeypox Technical Working Group (TWG) is monitoring activities in all states.
- Harmonisation of surveillance and laboratory data from across states and laboratories.
- Provision of off-site surveillance support to affected States.

Acute Flaccid Paralysis (AFP)

Table14: Week 5

Suspected cases	Confirmed cases	Deaths	Number of States and LGAs affected
107	0	0	State: 29 LGA: 97

Table 15: AFP Year to date (week 1 – 5, 2024/2025)

Suspected cases		Confirmed cases		Deaths		CFR	
2024	2025	2024	2025	2024	2025	2024	2025
765	371	0	0	0	0	0%	0%

Figure 14: Trend of suspected and confirmed cases of AFP by epidemiological week, 2025.

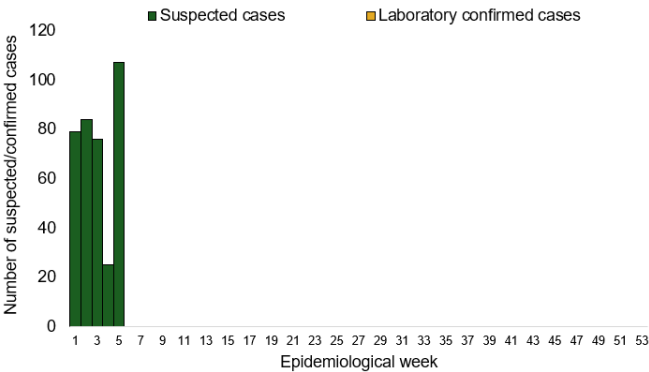
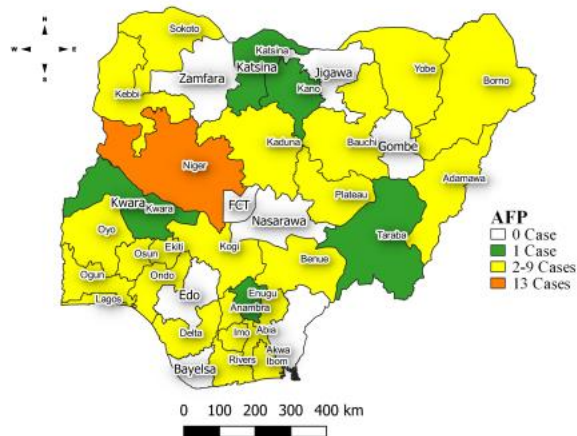


Figure 15: Suspected cases of AFP by State, Nigeria, week 5, 2025.



Key points

- There were 107 suspected cases of AFP reported from 97 LGAs in 29 states. There was no laboratory confirmed case and no death was recorded.

## Coronavirus Disease (COVID-19)

**Table 16: Week 5**

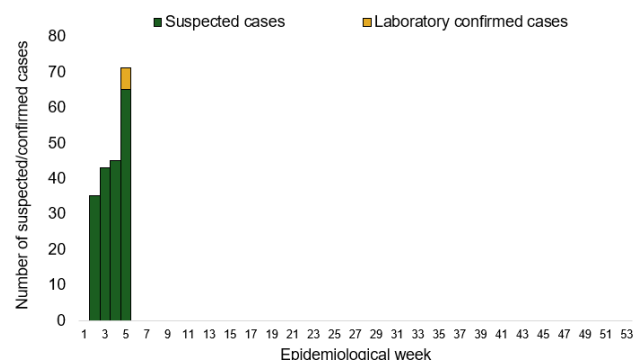
Suspected cases	Confirmed cases	Deaths	Number of States and LGAs affected
71	6	0	State: 5 + FCT LGA: 21

**Table 17: Covid 19 Year to date (Week 1- 5, 2024/2025)**

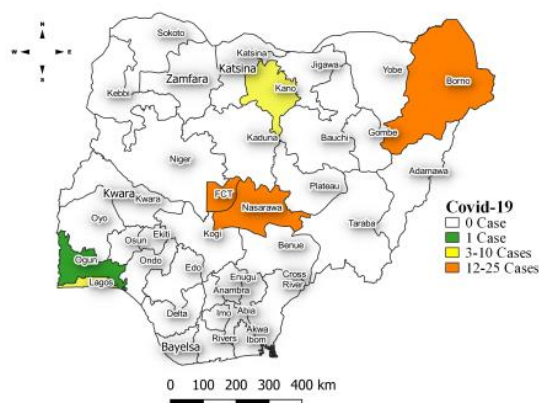
Suspected cases		Confirmed cases		Deaths		CFR	
2024	2025	2024	2025	2024	2025	2024	2025
168	256	168	11	0	0	0%	0%

\*Backlogs were added to suspected and confirmed cases 2025.

*Figure 16: Trend of suspected and confirmed cases of Covid 19 by epidemiological week, 2025.*



*Figure 17: Suspected cases of Covid 19 by State, Nigeria, week 5, 2025.*



## Key points

- There were 71 suspected cases of Covid 19 reported from 21 LGAs in five states and FCT. There were six laboratory confirmed cases and no death was recorded.

## Actions

### To date:

- National Covid 19 Technical Working Group (TWG) is monitoring activities in all states.
- Continue to follow up with states for reports, initial samples, contact tracing and challenges.
- Strengthen quality data collection at the LGAs/states & ensure prompt reporting.

## Diphtheria

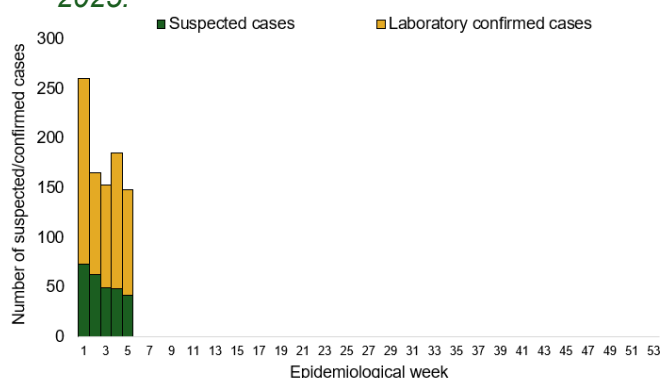
**Table 18: Week 5**

Suspected cases	Confirmed cases	Deaths	Number of States and LGAs affected
148	107	1	State: 3 LGA: 20

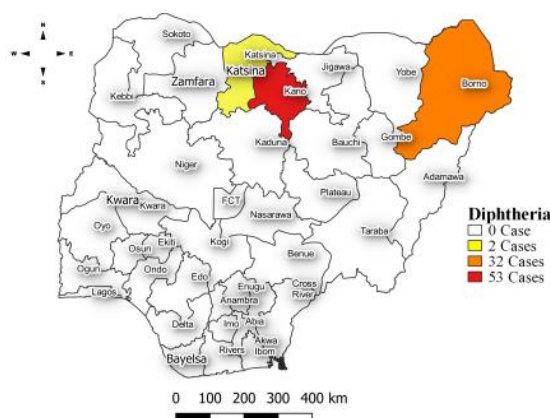
**Table 19: Diphtheria Year to date (week 1 – 5, 2024/2025)**

Suspected cases		Confirmed cases		Deaths		CFR	
2024	2025	2024	2025	2024	2025	2024	2025
2730	876	1341	588	37	22	1.4%	2.5%

*Figure 18: Trend of suspected and confirmed cases of Diphtheria by epidemiological week, 2025.*



*Figure 19: Suspected cases of Diphtheria by State, Nigeria, week 5, 2025.*



## Key points

- There were 148 suspected cases of Diphtheria reported from 20 LGAs in three states. There were 107 confirmed cases and one death was recorded.

## Actions

### To date:

- National Diphtheria Technical Working Group (TWG) is monitoring activities in all states.
- Provides technical and offsite support to states on case identification, reporting and response especially non-reporting and low burden states.
- Data harmonization with laboratory and case management pillars.

National Influenza Sentinel Surveillance

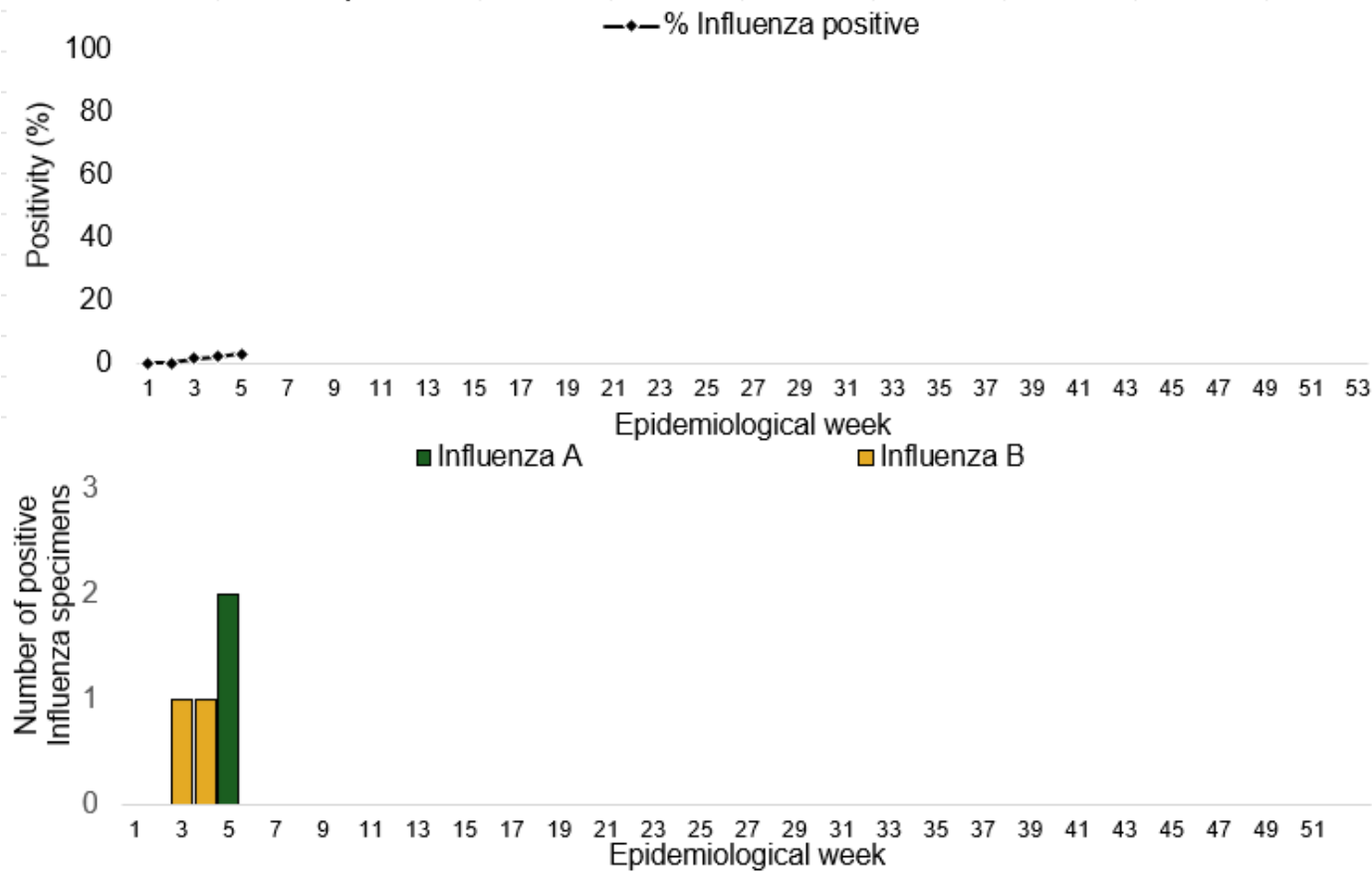
Table 20: Week 5

Suspected Cases	Confirmed Cases	Confirmed Case by type	
		Influenza A	Influenza B
71	2	2	0

Table 21: Influenza Year to date (week 1 – 5, 2025)

Suspected cases	Total Confirmed Cases	Confirmed cases by type	
		Influenza A	Influenza B
260	5	3	2

Figure 20: Number of influenza positive specimens by type and percentage positive by epidemiological week, 2025.



## Event Based Surveillance (EBS)

### Week 5

#### Key points

##### Epi Week 5

- 144 Calls were successfully routed to agents and answered.
- Over 317 articles scanned through Epidemic Intelligence from Open Sources (EIOS).
- From the calls and EIOS, 3 signals (2 MPox and 1 Cholera cases) were picked and escalated to the corresponding TWGs.

##### Cumulatively from Week 1 – 5

- 513 calls were successfully routed to agents and answered.
- 10 Signals were picked and escalated.

*Figure 22: Number of signals/events per week, 2025.*

