



NIGERIA CENTRE FOR DISEASE CONTROL AND PREVENTION

Nigeria Centre for Disease Control and Prevention

Protecting the health of Nigerians

Weekly Epidemiological Report

Week 4: 20th – 26th January 2025

Highlight of the week

THE NATIONAL RISK COMMUNICATION TECHNICAL WORKING GROUP 1ST QUARTER MEETING



The 1st Quarter National Risk Communication Technical Working Group (NRCTWG) Meeting, coordinated by the NCDC, was held to evaluate the progress of Risk Communication and Community Engagement (RCCE) efforts identify existing gaps, and develop actionable strategies for improving risk communication coordination, multi-sectoral collaboration, and community engagement in Nigeria.

This multisectoral group of MDAs and partners is focused on reviewing the 2024 RCCE strategic activities, addressing gaps, building RCCE capacity and align efforts with the national RCCE goals for public health improvement.

The meeting led to the development of a consolidated RCCE action plan, ensuring alignment with national health security objectives. It also strengthened stakeholder collaboration, identified training needs, and set clear directives for enhancing risk communication strategies across sectors.

The evaluation component of the meeting provided insights into stakeholder satisfaction, effectiveness of the deliberations, and recommendations for future improvements, ensuring that NRCTWG remains adaptive and responsive to emerging public health threats.

This activity reaffirmed NRCTWG's commitment to strengthening Nigeria's RCCE framework, fostering multi-sectoral collaboration, and ensuring the public receives timely and accurate health communication during emergencies

Summary of Incidents

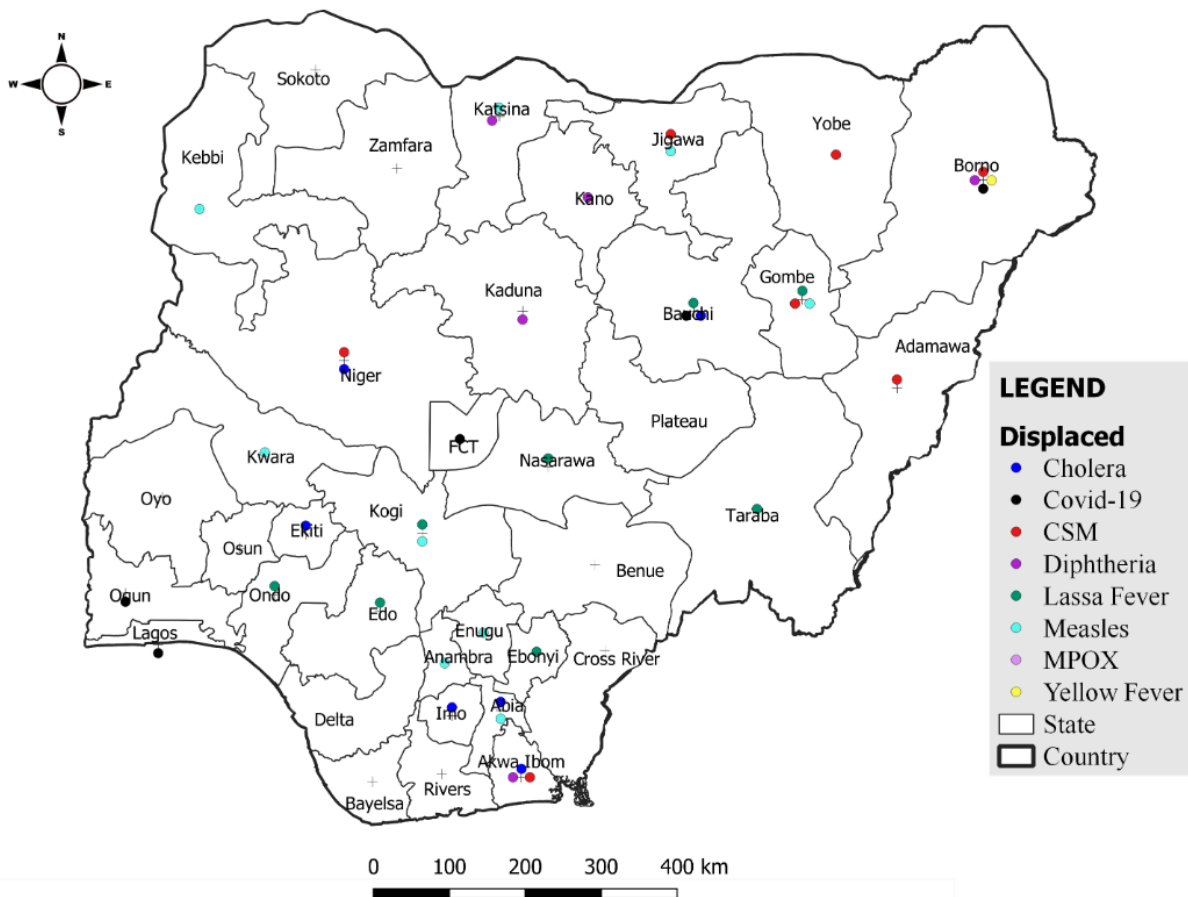
Ongoing incidents

4

The Ongoing incidents within the reporting week are Lassa Fever, Cholera, Mpox and Diphtheria

** Ongoing incidents are defined as confirmed cases where a national EOC or equivalent has been activated*

Other incidents are those with confirmed cases for which EOC is not activated as shown in the map below



Summary of Diseases

Week 4: 20th – 26th January 2025

Lassa Fever ^{1,2}	Cerebrospinal Meningitis (CSM) ^{1,4}	Yellow Fever ^{1,4}
328 Suspected case(s)	24 Suspected case(s)	72 Suspected case(s)
76 Confirmed case(s)	5 Confirmed case(s)	0 Confirmed case(s)
12 Death(s)	2 Death(s)	0 Death(s)
Cholera ^{1,4}	Measles ^{1,4}	Mpox ^{1,4}
27 Suspected case(s)	43 Suspected case(s)	44 Suspected case(s)
0 Confirmed case(s)	12 Confirmed case(s)	6 Confirmed case(s)
2 Death(s)	0 Death(s)	0 Death(s)
Acute Flaccid Paralysis (AFP) ^{1,4}	National Sentinel influenza surveillance ⁵	Coronavirus Disease ^{1,}
25 Suspected case(s)	51 Suspected case(s)	45 Suspected case(s)
0 Confirmed case(s)	1 Confirmed case(s)	0 Confirmed case(s)
		0 Death(s)
Diphtheria ^{1,4}		
185 Suspected case(s)		
135 Confirmed case(s)		
5 Death(s)		

- Information for this disease was retrieved from the Technical Working Group and Situation Reports
- Case Fatality Rate (CFR) for this disease is reported for confirmed cases only.
- CFR for this disease is reported for total cases i.e. suspected + confirmed.
- Information for sentinel influenza was retrieved from the laboratory.

Lassa Fever

Week 4

Suspected cases	Confirmed cases	Deaths	Number of States and LGAs affected
328	76	12	State: 17 LGA: 27

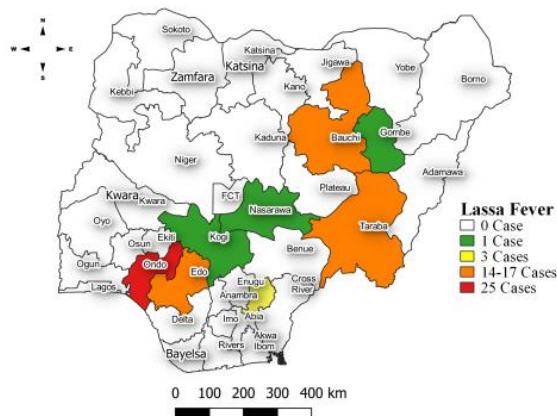
Year to date (week 1 - 52)

Suspected cases		Confirmed cases		Deaths		CFR	
2024	2025	2024	2025	2024	2025	2024	2025
1239	1171	258	290	48	53	18.6%	18.3%

Figure 1: Number of suspected and confirmed cases of Lassa Fever, Nigeria, Weeks 1 – 52, 2025



Figure 2: Location of **confirmed** cases of Lassa Fever by State, Nigeria, week 4, 2025



Key points

- There were 328 suspected cases of Lassa Fever reported from 27 LGAs in 17 states. There were 70 laboratory confirmed cases and 11 deaths were recorded.

Actions

To date:

- National Lassa fever multi-partner, multi-sectoral Technical Working Group (TWG) continues to coordinate the response activities at all levels.
- Held the 7th Lassa Fever webinar in the readiness series for the 2024/2025 outbreak season
- Commenced the first round of 3-monthly participants follow-up and blood sampling exercise at FMC Owo and ISTH Edo states sites
- Conducted the baseline audiometry assessment at FMCO and ISTH sites
- Carried out risk Communication and Community Engagement in deployed NRRT states

Cerebrospinal Meningitis (CSM)

Week 4

Suspected cases	Confirmed cases	Deaths	Number of States and LGAs affected
24	5	2	State: 7 LGA: 15

Year to date (week 1 – 52)

Suspected cases		Confirmed cases		Deaths		CFR	
2024	2025	2024	2025	2024	2025	2024	2025
414	64	12	5	35	5	8.4%	7.8%

Figure 3: Number of suspected and confirmed cases of CSM, Nigeria, weeks 1 – 52, 2024

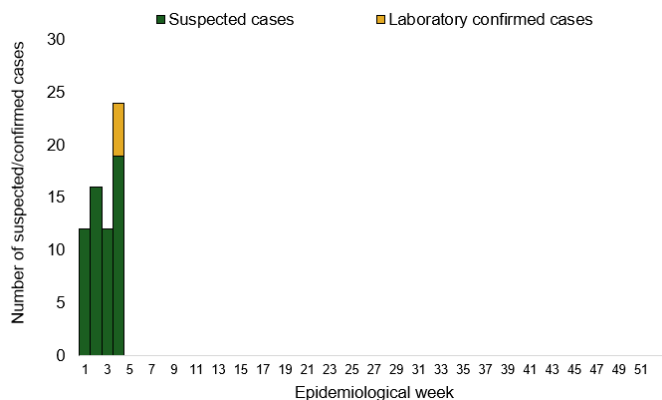
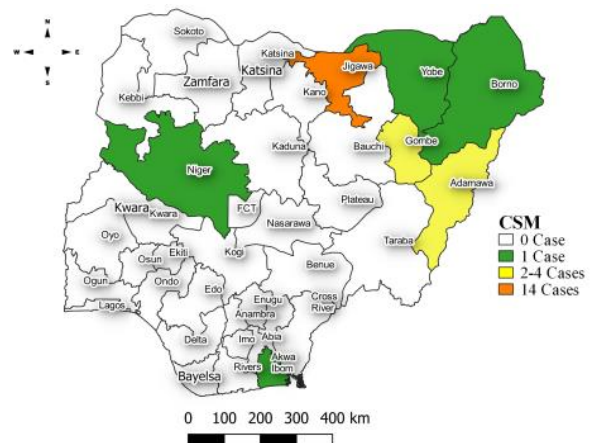


Figure 4: Location of suspected cases of CSM by State, Nigeria, week 4, 2025



Key points

- There were 24 suspected cases of Cerebrospinal meningitis (CSM) reported from 15 LGAs in seven states. There were five laboratory confirmed cases and two deaths were recorded.

Actions

To date:

- National CSM multi-partner Technical Working Group (TWG) continues to coordinate activities across states.
- Ongoing surveillance in all states through routine Integrated Disease Surveillance and Response (IDSR) and Event-Based Surveillance (EBS)
- Providing offsite/onsite support to states
- Management of suspected/confirmed cases at designated treatment centres across the states

Planned

- Enhanced surveillance (active case search and contact tracing) in affected states and LGAs,
- Airing of CSM jingles and distribution of IEC materials.
- Media engagement meetings and training of journalists, other media professionals

Yellow Fever

Week 4

Suspected cases	Confirmed cases	Deaths	Number of States and LGAs affected
72	0	0	State: 27 + FCT LGA: 61

Year to date (week 1 – 52)

Suspected cases		Confirmed cases		Deaths		CFR	
2024	2025	2024	2025	2024	2025	2024	2025
249	236	0	0	0	0	0%	0%

Figure 5: Number of suspected and confirmed cases of Yellow Fever, Nigeria, weeks 1 – 52, 2025

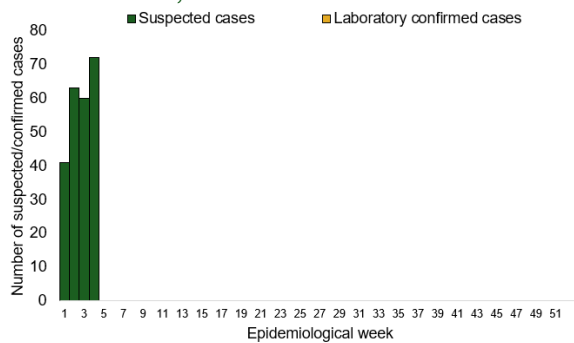
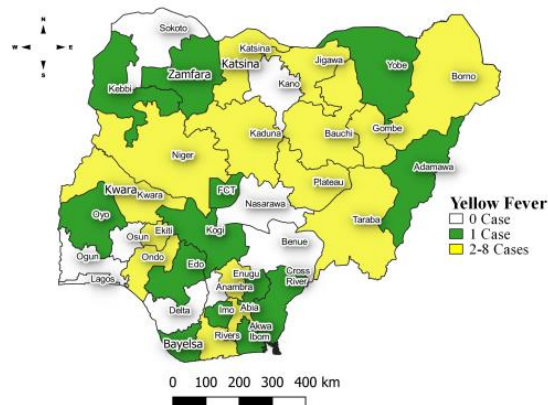


Figure 6: Location of suspected cases of Yellow Fever by States, Nigeria, week 4, 2025



Key points

- There were 72 suspected cases of Yellow Fever (YF) reported from 61 LGA in 27 states and FCT. There was no laboratory confirmed case and no death was recorded.

Actions

To date:

- National YF multi-partner Technical Working Group (TWG) continues to coordinate activities across states.
- Harmonizing surveillance and laboratory data.
- Provision of off-site surveillance support to affected States

Cholera

Week 4

Suspected cases	Confirmed cases	Deaths	Number of States and LGAs affected
27	0	2	State: 6 LGA: 8

Year to date (week 1 – 52)

Suspected cases		Confirmed cases		Deaths		CFR	
2024	2025	2024	2025	2024	2025	2024	2025
374	156	1	11	3	13	0.8%	8.3%

Figure 7: Number of suspected and confirmed cases of Cholera, Nigeria, weeks 1 – 52, 2025

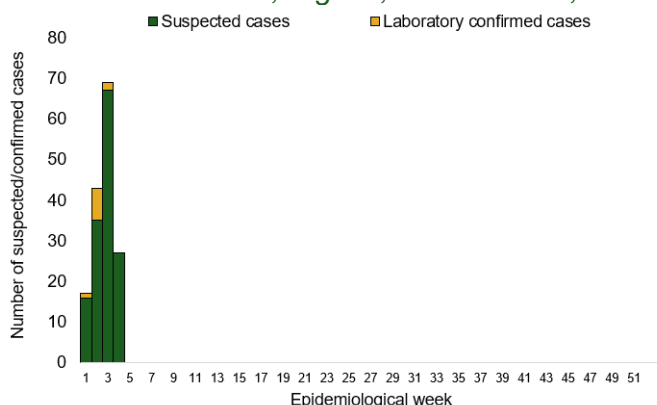
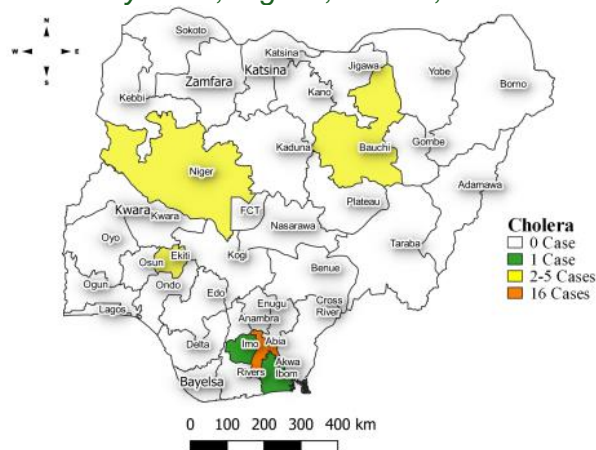


Figure 8: Location of suspected cases of Cholera by State, Nigeria, week 4, 2025



Key points

- There were 27 suspected cases of Cholera reported from eight LGAs in six states. There was no laboratory confirmed case and two deaths were recorded.

Actions

To date

- National Cholera Multi-Sectoral Technical Working Group (TWG) is monitoring all states and supporting affected states.
- Conducted WASH Sector review workshop
- Finalization workshop held on cholera case management guideline, treatment protocol and SOP harmonization
- Cholera advisory developed and circulated

Planned

- Scale up risk communications
- State/LGA Surveillance officers to intensify community and facility based Active case search and follow-up weekly to reduce late/non reporting

Measles

Week 4

Suspected cases	Confirmed cases	Deaths	Number of States and LGAs affected
43	12	0	State: 9 LGA: 28

Year to date (week 1 – 52)

Suspected cases		Confirmed cases		Deaths		CFR	
2024	2025	2024	2025	2024	2025	2024	2025
2822	348	372	69	29	0	1%	0%

Figure 9: Number of suspected and confirmed cases of Measles, Nigeria, weeks 1 – 52, 2025.

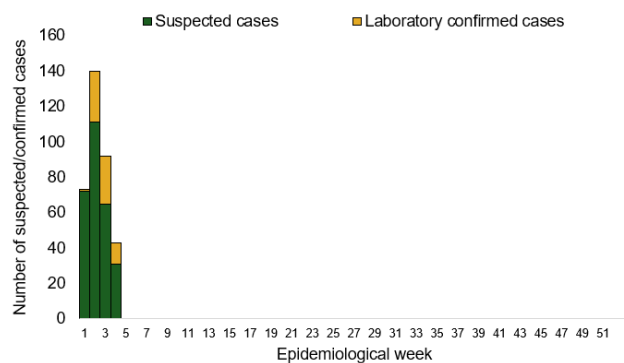
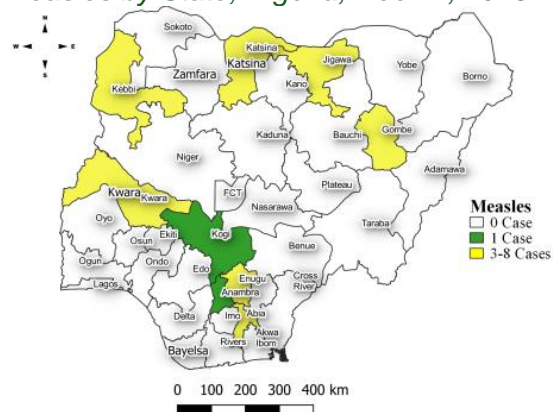


Figure 10: Location of suspected cases of Measles by State, Nigeria, week 4, 2025



Key points

- There were 43 suspected cases of Measles reported from 28 LGAs in nine states. There were 12 laboratory confirmed cases and no death was recorded.

Actions

To date

- National Measles TWG is closely monitoring measles surveillance data and providing feedback to relevant agencies and development partners.
- Virtual biweekly measles TWG meetings via zoom.
- Monthly surveillance data review.
- Weekly surveillance and laboratory data harmonisation ongoing.

Planned:

- Follow up with states in outbreak for ongoing response activities and challenges
- Weekly/monthly tracking of surveillance and laboratory performance indicators and feedback
- Virtual biweekly measles TWG meetings for timely review of measles surveillance data and feedback.

Mpox

Week 4

Suspected cases	Confirmed cases	Deaths	Number of States and LGAs affected
44	6	0	State: 16 LGA: 29

Year to date (week 1 – 52)

Suspected cases		Confirmed cases		Deaths		CFR	
2024	2025	2024	2025	2024	2025	2024	2025
54	165	2	18	0	0	0%	0%

Figure 11: Number of suspected and confirmed cases of Mpox, Nigeria, weeks 1 – 52, 2025.

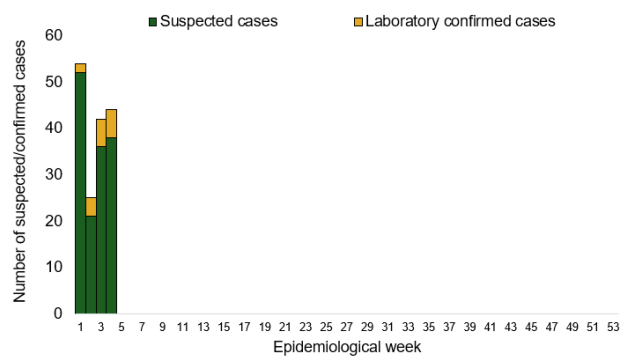
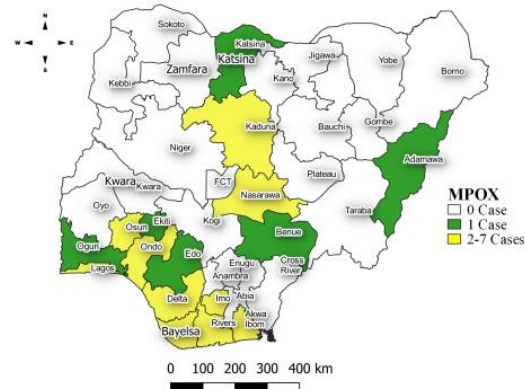


Figure 12: Location of suspected cases of Mpox by State, Nigeria, week 4, 2025



Key points

- There were 44 suspected cases of Mpox reported from 29 LGAs in 16 states. There were six laboratory confirmed cases and no death was recorded.

Actions To date

- National Monkeypox Technical Working Group (TWG) is monitoring activities in all states.
- Harmonisation of surveillance and laboratory data from across states and laboratories.
- Provision of off-site surveillance support to affected States
- Weekly EOC meetings

Acute Flaccid Paralysis (AFP)

Week 4

Suspected cases	Confirmed cases	Deaths	Number of States and LGAs affected
25	0	0	State: 15 LGA: 23

Year to date (week 1 – 52)

Suspected cases		Confirmed cases		Deaths		CFR	
2024	2025	2024	2025	2024	2025	2024	2025
589	264	0	0	0	0	0%	0%

Figure 13: Number of suspected and confirmed cases of AFP, Nigeria, weeks 1 – 52, 2025

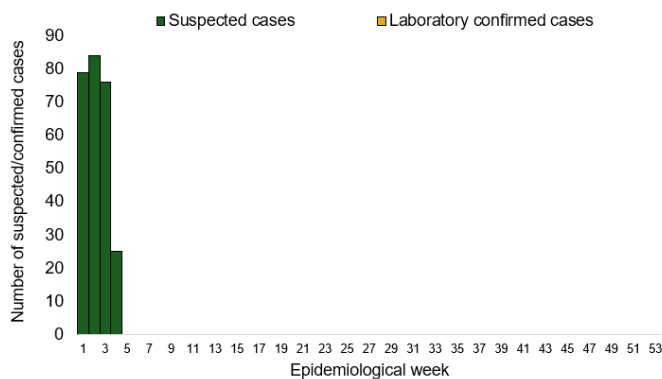
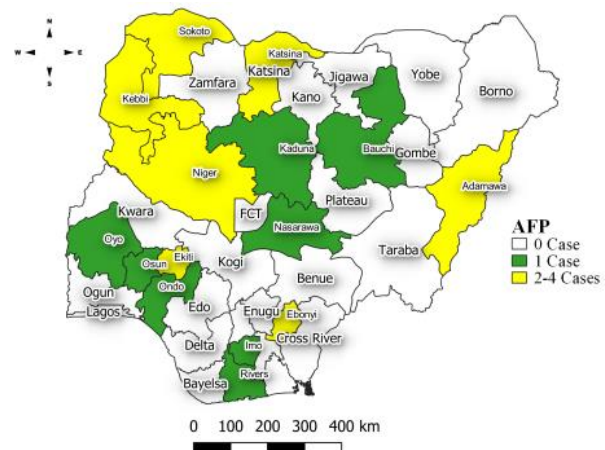


Figure 14: Location of suspected cases of AFP by State, Nigeria, week 4, 2025



Key points

- There were 25 suspected cases of AFP reported from 23 LGAs in 15 states. There was no laboratory confirmed case and no death was recorded.

National Influenza Sentinel Surveillance

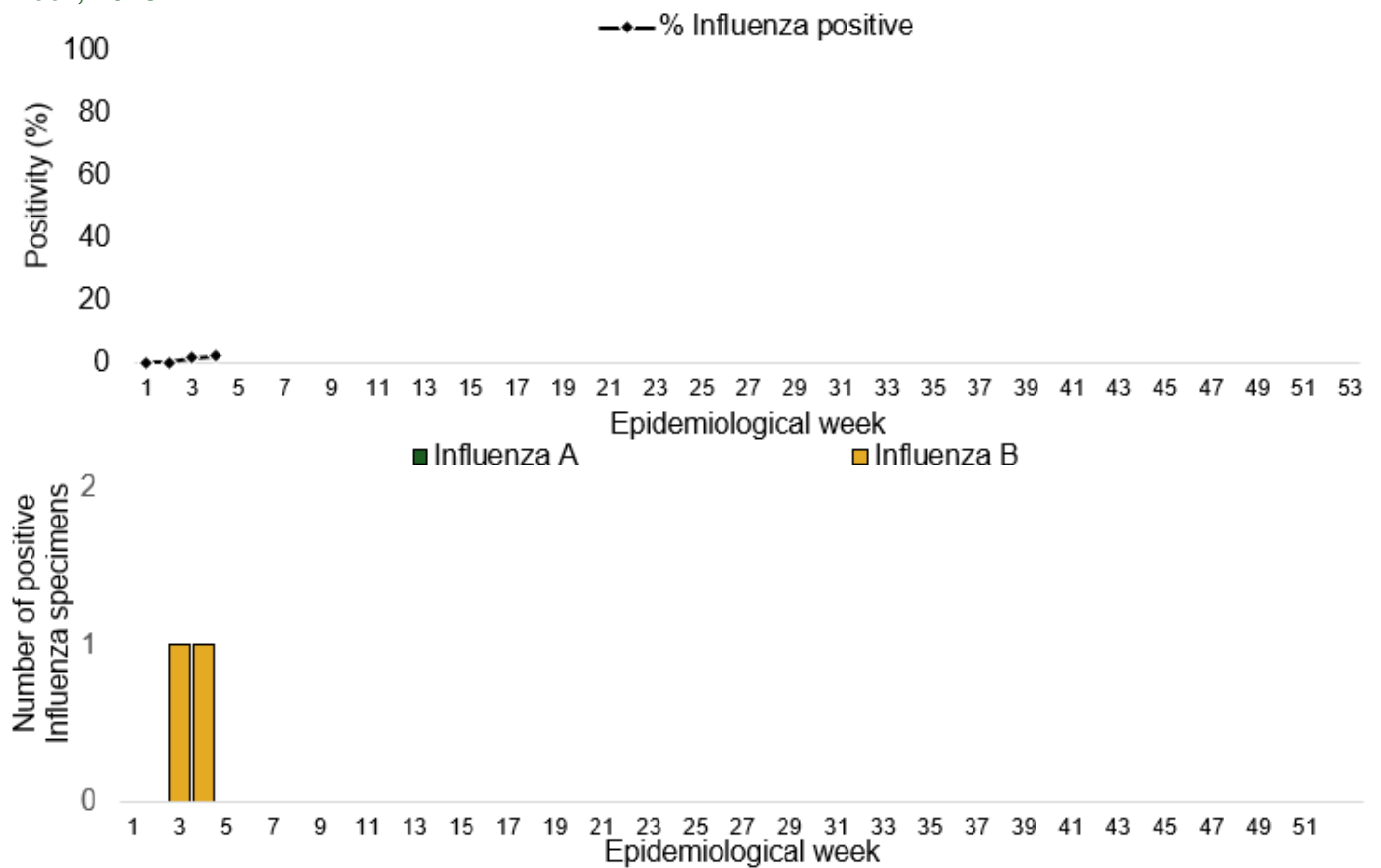
Week 4

Suspected Cases	Confirmed Cases	Confirmed Case by type	
		Influenza A	Influenza B
51	1	0	1

Year to date (week 1 – 52)

Suspected cases	Total Confirmed Cases	Confirmed cases by type	
171	2	Influenza A 0	Influenza B 2

Figure 15: Number of influenza positive specimens by type and percentage positive by epidemiological week, 2025.



Coronavirus Disease (COVID-19)

Week 4

Suspected cases	Confirmed cases	Deaths	Number of States and LGAs affected
45	0	0	State: 5 + FCT LGA: 27

Year to date (Week 1- 52)

Suspected cases		Confirmed cases		Deaths		CFR	
2024	2025	2024	2025	2024	2025	2024	2025
89	123	89	0	0	0	0%	0%

Figure 16: Epidemic curve of confirmed cases of COVID-19, Nigeria, week 1 - 52, 2025

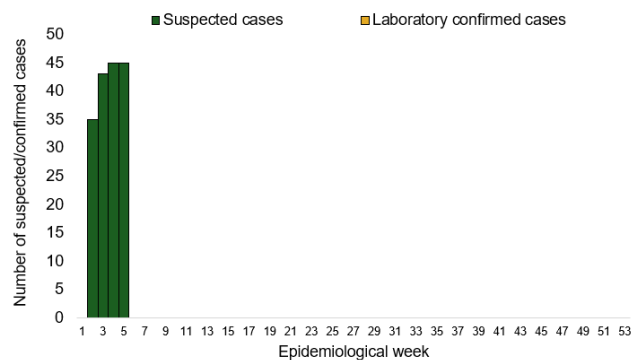
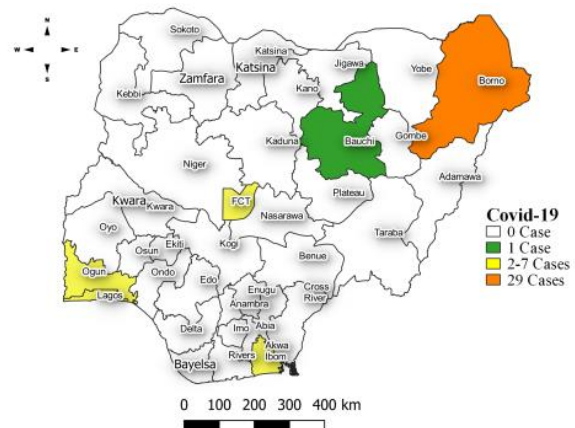


Figure 17: Location of suspected cases of COVID-19 by State, Nigeria, as at week 4, 2025



Key points

- There were 45 suspected cases of Covid 19 reported from 27 LGAs in five states and FCT. There was no laboratory confirmed case and no death was recorded.

Actions To date

- National Covid 19 Technical Working Group (TWG) is monitoring activities in all states.
- Harmonisation of surveillance and laboratory data from across states and laboratories.
- Provision of off-site surveillance support to affected States

Diphtheria

Week 4

Suspected cases	Confirmed cases	Deaths	Number of States and LGAs affected
185	137	5	State: 4 LGA: 18

Year to date (week 1 – 52)

Suspected cases		Confirmed cases		Deaths		CFR	
2024	2025	2024	2025	2024	2025	2024	2025
2224	690	1138	458	29	18	1.3%	2.6%

Figure 18: Number of suspected and confirmed cases of Diphtheria, Nigeria, weeks 1 – 52, 2025

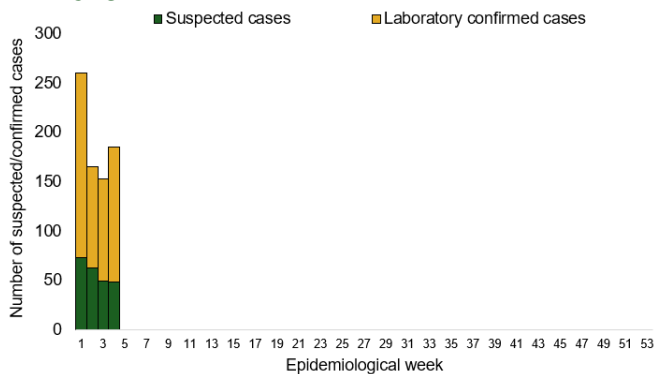
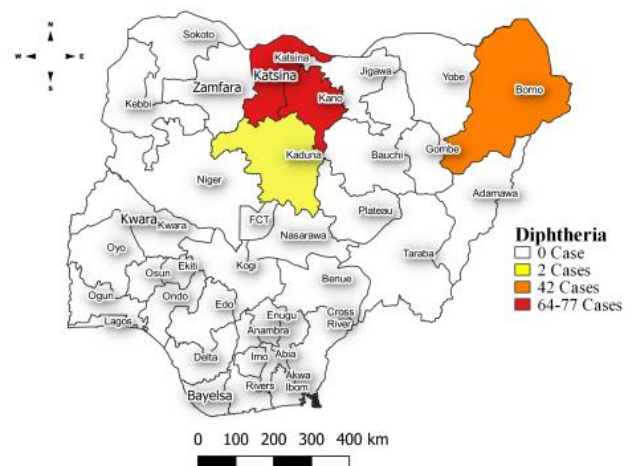


Figure 19: Location of suspected cases of Diphtheria by State, Nigeria, week 4, 2025



Key points

- There were 185 suspected cases of Diphtheria reported from 18 LGAs in four states. There were 137 confirmed cases and five deaths were recorded.

Actions To date

- National Diphtheria Technical Working Group (TWG) is monitoring activities in all states.
- Dissemination of SBC materials (Soft copies) Training slides, posters, flyers etc
- Continued engagement with key influencers (Religious and Traditional) in affected states and community. This is done by leveraging on National traditional and religious leaders' platform.
- Conducted 3rd round of reactive vaccination in the remaining states.

Planned:

- Capacity building on laboratory diagnosis of diphtheria using PCR directly on clinical samples.
- Support testing sites with reagents and consumables.

Event Based Surveillance (EBS)

Week 4

Key points

Epi Week 4 (20th – 26th January 2025)

- 127 Calls were successfully routed to agents and answered
- 0 calls not routed to agents (Failed call)
- 127 total number of calls (successful and failed)
- 0 number of SMS received
- 0 WhatsApp/live chat messages received
- The percentage of failed to total inbound calls 0.0%
- Over 750 articles scanned through EIOS
- 2 signals picked (Verified)
 - 2 confirmed dead as suspected cholera outbreak hits warri southwest-community.
 - Cholera outbreak with fatalities has been reported in Emeroke, a coastal community in Eastern Obolo local government area of Akwa Ibom State,

Cumulative, from week 1 - 3

- 369 calls were successfully routed to agents and answered
- 0 calls not routed to agents (Failed call)
- 369 total inbound calls recorded
- The Percentage of failed to total inbound calls: 0.0%
- 7 Signals were picked and escalated

Figure 20: Number of successful and failed calls, weeks 1 – 52, 2025

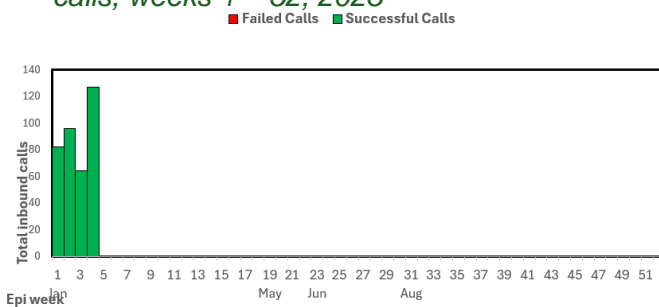


Figure 21: Number of signals/events per week, 2025

