



NIGERIA CENTRE FOR DISEASE  
CONTROL AND PREVENTION

**Nigeria Centre for Disease Control and Prevention**

*Protecting the health of Nigerians*

## **Weekly Epidemiological Report**

**Week 1: 30<sup>th</sup> December – 5<sup>th</sup> January 2025**

### **Highlight of the week**

#### **HUMAN METAPNEUMOVIRUS (HMPV)**

The Nigeria Centre for Disease Control and Prevention (NCDC) is committed to safeguarding the health of all Nigerians. In response to recent reports of increased Human Metapneumovirus (HMPV) activity in China and other affected regions, as well as growing public interest in the matter, the NCDC in collaboration with the Federal Ministry of Health and Social Welfare is closely monitoring global developments. We aim to provide timely, accurate information and guidance to keep the Nigerian public informed and prepared.

Nigeria operates a National Influenza Sentinel Surveillance (NISS) system, comprising sentinel sites distributed across the six geopolitical zones of the country. The Nigeria Centre for Disease Control and Prevention (NCDC) is proactively implementing measures to strengthen the country's preparedness and response capacity.

HMPV is a respiratory virus that causes symptoms ranging from mild cold-like illness to severe respiratory infections, particularly affecting young children, older adults, and individuals with weakened immune systems. There is no specific antiviral treatment or vaccine, and recovery relies on supportive care.

##### **Key Symptoms:**

- Cough, fever, nasal congestion
- Shortness of breath, wheezing
- Severe cases may lead to bronchitis or pneumonia

##### **Transmission:**

- Spreads via respiratory droplets, close contact, and contaminated surfaces.
- Overcrowded and poorly ventilated areas increase the risk.

##### **Prevention Measures:**

- Frequent handwashing, covering coughs/sneezes, wearing masks if symptomatic.
- Avoiding close contact with infected individuals and crowded places.
- Regularly disinfecting surfaces and self-isolating when sick.
- Vulnerable groups should seek prompt medical attention for severe symptoms.

**Learn more about HMPV our detailed advisory:**

**[https://ftp.ncdc.gov.ng/themes/common/docs/protocols/355\\_1736345093.pdf](https://ftp.ncdc.gov.ng/themes/common/docs/protocols/355_1736345093.pdf)**

## Summary of Incidents

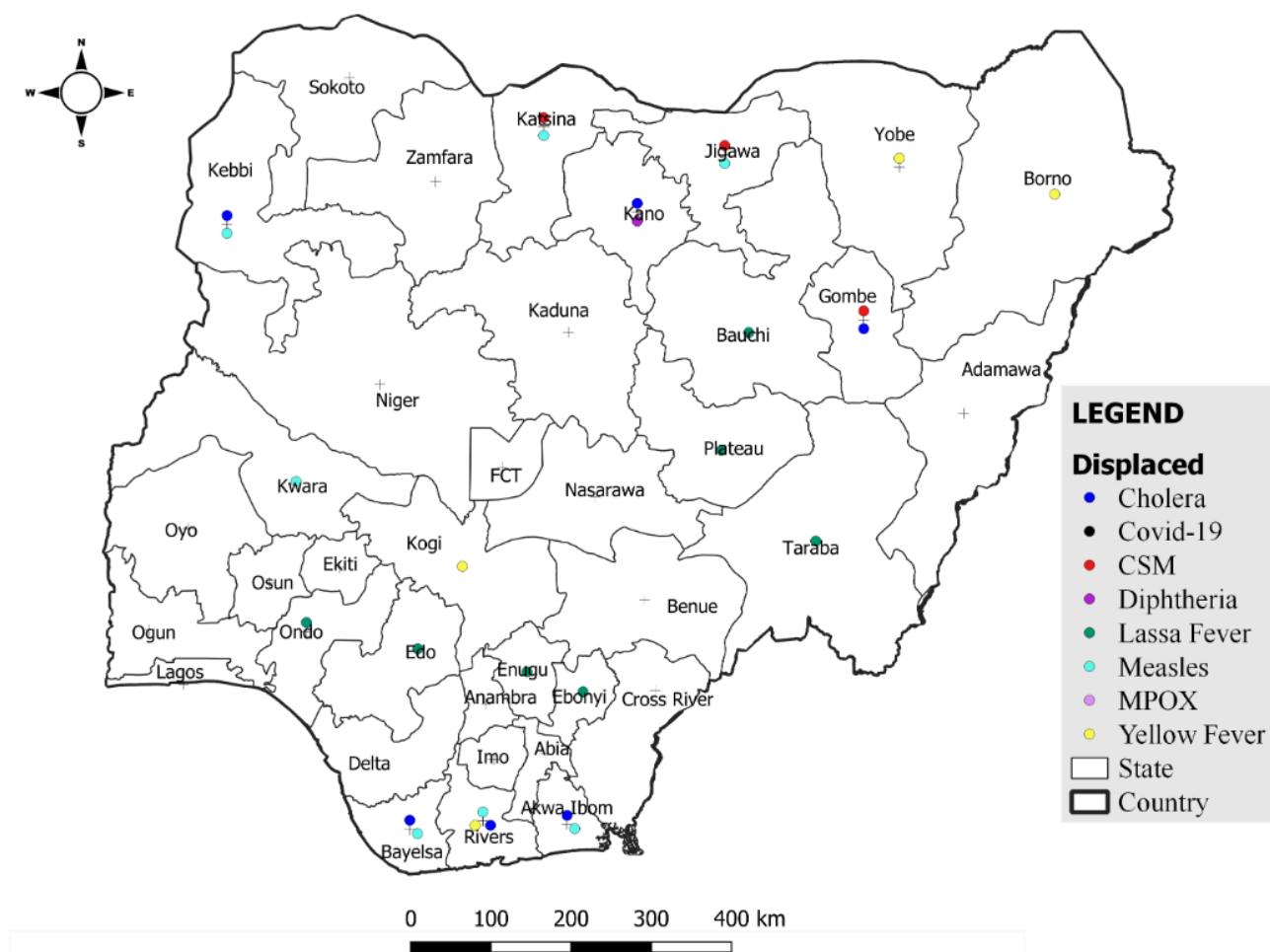
### Ongoing incidents

3

The Ongoing incidents within the reporting week are Cholera, Mpox and Diphtheria

*\* Ongoing incidents are defined as confirmed cases where a national EOC or equivalent has been activated*

Other incidents are those with confirmed cases for which EOC is not activated as shown in the map below



## Summary of Diseases

Week 1: 30<sup>th</sup> December – 5<sup>th</sup> January 2025

Lassa Fever <sup>1,2</sup>	Cerebrospinal Meningitis (CSM) <sup>1,4</sup>	Yellow Fever <sup>1,4</sup>
196 Suspected case(s)	12 Suspected case(s)	41 Suspected case(s)
54 Confirmed case(s)	0 Confirmed case(s)	0 Confirmed case(s)
10 Death(s)	0 Death(s)	0 Death(s)
Cholera <sup>1,4</sup>	Measles <sup>1,4</sup>	Mpox <sup>1,4</sup>
17 Suspected case(s)	73 Suspected case(s)	54 Suspected case(s)
1 Confirmed case(s)	1 Confirmed case(s)	2 Confirmed case(s)
2 Death(s)	0 Death(s)	0 Death(s)
Acute Flaccid Paralysis (AFP) <sup>1,4</sup>	National Sentinel influenza surveillance <sup>5</sup>	Coronavirus Disease <sup>1,</sup>
79 Suspected case(s)	4 Suspected case(s)	0 Suspected case(s)
0 Confirmed case(s)	0 Confirmed case(s)	0 Confirmed case(s)
		0 Death(s)
Diphtheria <sup>1,4</sup>		
187 Suspected case(s)		
114 Confirmed case(s)		
6 Death(s)		

1. Information for this disease was retrieved from the Technical Working Group and Situation Reports of the Nigerian Centre for Disease Control and Prevention
2. Case Fatality Rate (CFR) for this disease is reported for confirmed cases only.
3. CFR for this disease is reported for total cases i.e. suspected + confirmed.
4. Information for sentinel influenza was retrieved from the laboratory.

Lassa Fever

Week 1

Suspected cases	Confirmed cases	Deaths	Number of States and LGAs affected
196	54	10	State: 10 LGA: 20

Year to date (week 1 - 52)

Suspected cases		Confirmed cases		Deaths		CFR	
2024	2025	2024	2025	2024	2025	2024	2025
190	196	53	54	6	10	11.3%	20%

Figure 1: Number of suspected and confirmed cases of Lassa Fever, Nigeria, Weeks 1 – 52, 2025

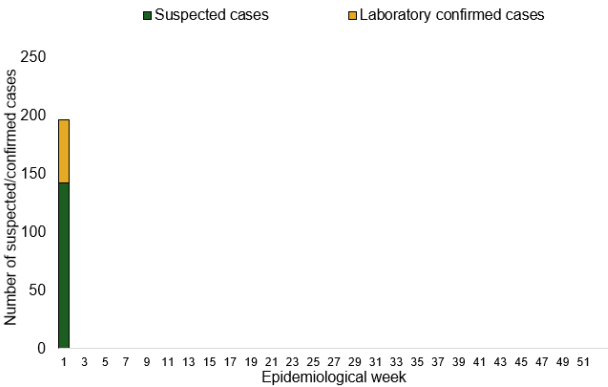
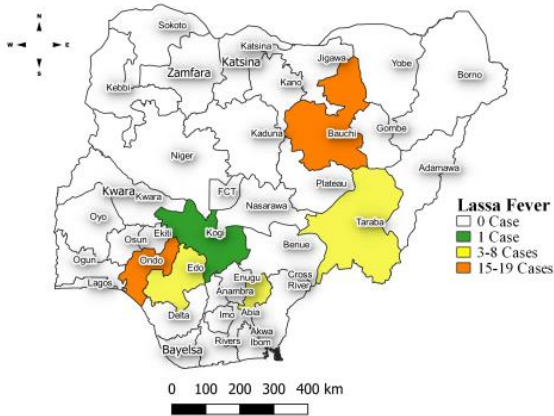


Figure 2: Location of confirmed cases of Lassa Fever by State, Nigeria, week 1, 2025



Key points

- There were 196 suspected cases of Lassa Fever reported from 20 LGAs in 10 states and FCT. There were 54 laboratory confirmed cases and 10 deaths were recorded.

Actions

To date:

- National Lassa fever multi-partner, multi-sectoral Technical Working Group (TWG) continues to coordinate the response activities at all levels.
- Activation of the Lassa Fever Incident Management System coordinated at the National Public Health Emergency Operation Centre
- Reviewed the Lassa Fever Advocacy toolkit with support from BA-N
- Held the 5th Webinar in the series in collaboration with the Laboratory pillar
- Conducted the Lassa fever risk assessment in preparation for the 2025 outbreak season

Cerebrospinal Meningitis (CSM)

Week 1

Suspected cases	Confirmed cases	Deaths	Number of States and LGAs affected
12	0	0	State: 4 LGA: 7

Year to date (week 1 – 52)

Suspected cases		Confirmed cases		Deaths		CFR	
2024	2025	2024	2025	2024	2025	2024	2025
59	12	2	0	3	0	5.1%	0%

Figure 3: Number of suspected and confirmed cases of CSM, Nigeria, weeks 1 – 52, 2024

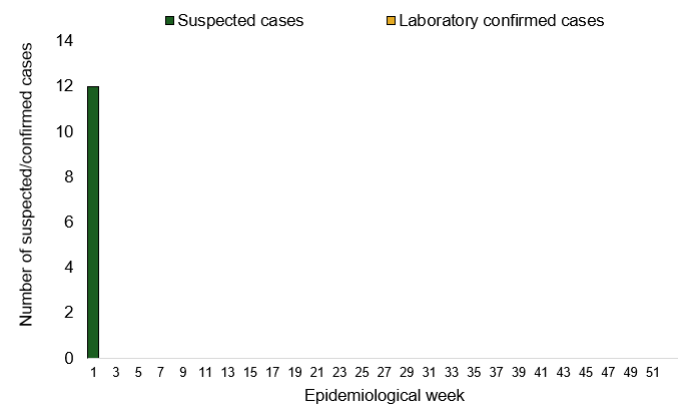
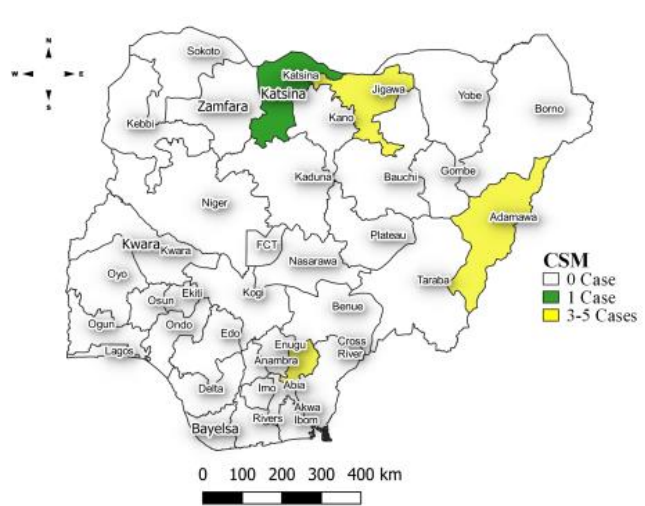


Figure 4: Location of suspected cases of CSM by State, Nigeria, week 1, 2025



Key points

- There were 12 suspected cases of Cerebrospinal meningitis (CSM) reported from seven LGAs in four states. There was no laboratory confirmed case and no death was recorded.

Actions

To date:

- National CSM multi-partner Technical Working Group (TWG) continues to coordinate activities across states.
- Providing offsite/onsite support to states and follow up for daily reporting and progress with response activities
- Management of suspected/confirmed cases at designated treatment centres across the states

Planned

- Maintain communication with and support to states for data reporting and response
- Distribution of response commodities across states
- Build capacity for sample collection, transportation, laboratory diagnosis and data management.

Yellow Fever

Week 1

Suspected cases	Confirmed cases	Deaths	Number of States and LGAs affected
41	0	0	State: 19 LGA: 36

Year to date (week 1 – 52)

Suspected cases		Confirmed cases		Deaths		CFR	
2024	2025	2024	2025	2024	2025	2024	2025
51	30	0	0	0	0	0%	0%

Figure 5: Number of suspected and confirmed cases of Yellow Fever, Nigeria, weeks 1 – 52, 2025

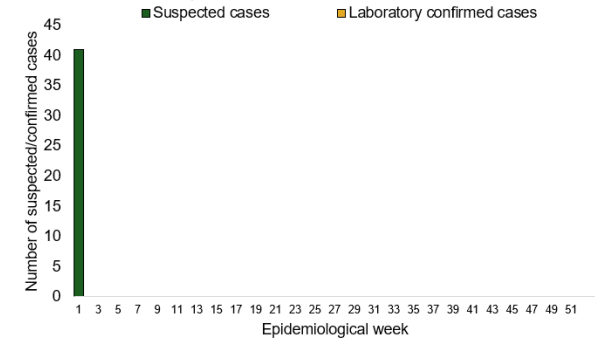
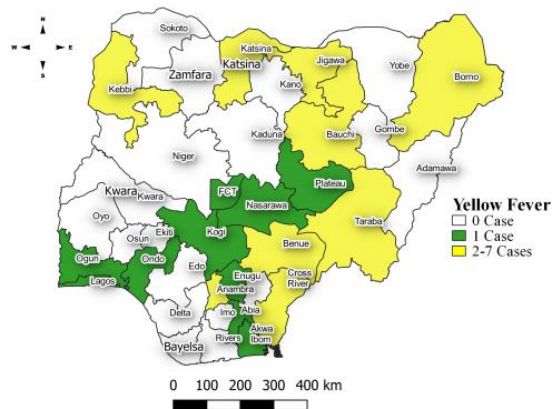


Figure 6: Location of suspected cases of Yellow Fever by States, Nigeria, week 1, 2025



Key points

- There were 41 suspected cases of Yellow Fever (YF) reported from 36 LGAs in 19 states and FCT. There was no laboratory confirmed case and no death was recorded.

Actions

To date:

- National YF multi-partner Technical Working Group (TWG) continues to coordinate activities across states.
- Harmonizing surveillance and laboratory data
- Provided off-site support to states
- Coordination of yellow fever sample management and transportation from all states to the regional reference laboratory

## Cholera

### Week 1

Suspected cases	Confirmed cases	Deaths	Number of States and LGAs affected
17	1	2	State: 6 LGA: 6

### Year to date (week 1 – 52)

Suspected cases		Confirmed cases		Deaths		CFR	
2024	2025	2024	2025	2024	2025	2024	2025
120	17	0	1	1	2	0.8%	11.8%

Figure 7: Number of suspected and confirmed cases of Cholera, Nigeria, weeks 1 – 52, 2025

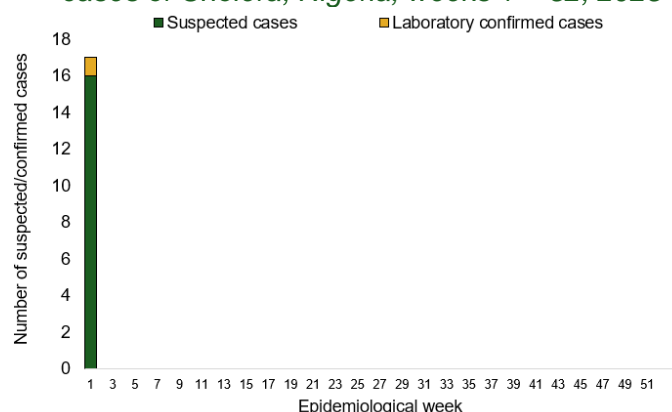
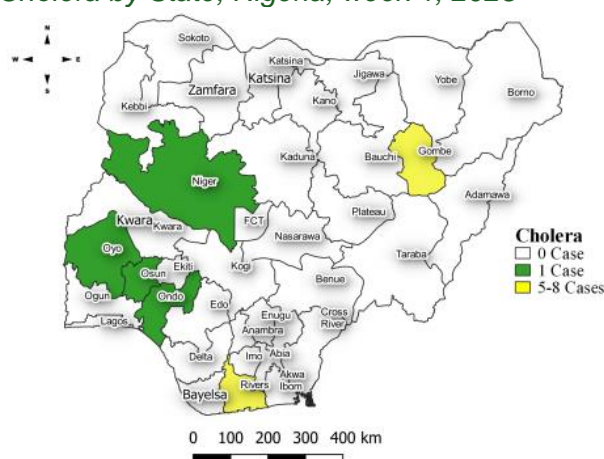


Figure 8: Location of suspected cases of Cholera by State, Nigeria, week 1, 2025



## Key points

- There were 17 suspected cases of Cholera reported from six LGAs in six states. There was one laboratory confirmed case and two deaths were recorded.

## Actions

### To date

- National Cholera Multi-Sectoral Technical Working Group (TWG) is monitoring all states and supporting affected states.
- Activation of EOC
- Ongoing surveillance in all states through the routine Integrated Disease Surveillance and Response (IDSR) and Event Based Surveillance (EBS)
- Epidemiological trend is being monitored to guide ICG request for planned vaccination campaigns
- Hygiene promotion, provision of safe water, water chlorination, household disinfection and sensitization on dangers of open defecation ongoing in high-risk communities by WASH sector partners and Community Health Volunteers in the affected states
- Essential response commodities are being distributed to all cholera affected states



## Measles

### Week 1

Suspected cases	Confirmed cases	Deaths	Number of States and LGAs affected
73	1	0	State: 22 LGA: 47

### Year to date (week 1 – 52)

Suspected cases		Confirmed cases		Deaths		CFR	
2024	2025	2024	2025	2024	2025	2024	2025
685	73	54	1	11	0	1.6%	0%

Figure 9: Number of suspected and confirmed cases of Measles, Nigeria, weeks 1 – 52, 2025.

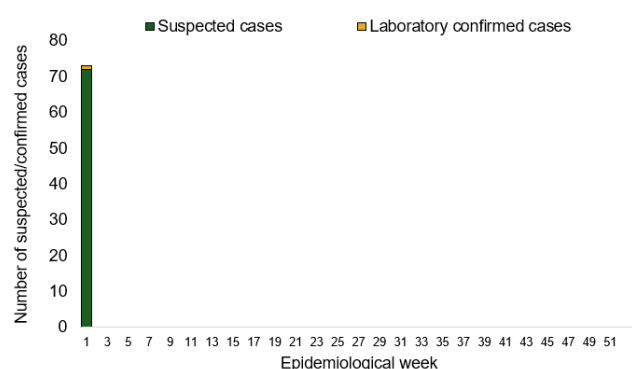
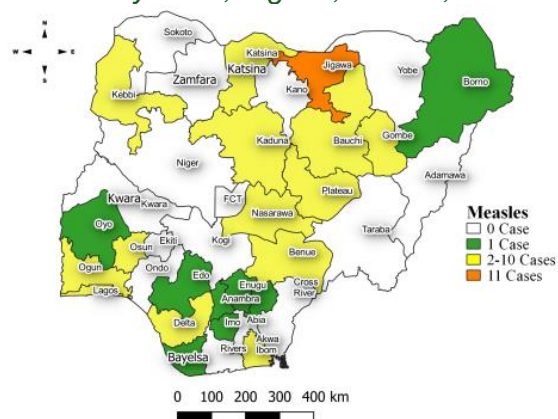


Figure 10: Location of suspected cases of Measles by State, Nigeria, week 1, 2025



### Key points

- There were 73 suspected cases of Measles reported from 47 LGAs in 22 states. There was one laboratory confirmed case and no death was recorded.

### Actions

#### To date

- National Measles TWG is closely monitoring measles surveillance data and providing feedback to relevant agencies and development partners.
- Planning meeting on Measles Outbreak Preparedness and Response (MOBR) step down to states
- Planning meeting on validation Measles Outbreak Preparedness and Response five years plan (2025 to 2030)

#### Planned

- Follow up with states (State Epids and SSO) and measles reference laboratories on using SORMAS in timely collecting and transmitting surveillance and laboratory data respectively
- Weekly measles surveillance data review.



Mpox

Week 1

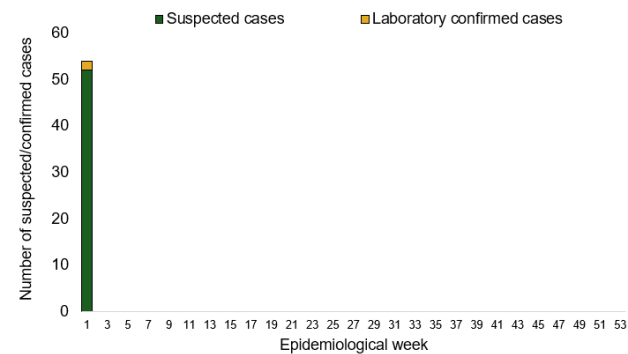
Suspected cases	Confirmed cases	Deaths	Number of States and LGAs affected
54	2	0	State: 5 LGA: 6

Year to date (week 1 – 52)

Suspected cases		Confirmed cases		Deaths		CFR	
2024	2025	2024	2025	2024	2025	2024	2025
3	54	0	2	0	0	0%	0%

Figure 11: Number of suspected and confirmed cases of Mpox, Nigeria, weeks 1 – 52, 2025.

Figure12: Location of suspected cases of Mpox by State, Nigeria, week 1, 2025



Key points

- There were 54 suspected cases of Mpox reported from six LGAs in five states. There were two laboratory confirmed cases and no death was recorded.

Actions

To date

- National Monkeypox Technical Working Group (TWG) is monitoring activities in all states.
- Harmonizing surveillance and laboratory data
- Provided off-site support to states

Acute Flaccid Paralysis (AFP)

Week 1

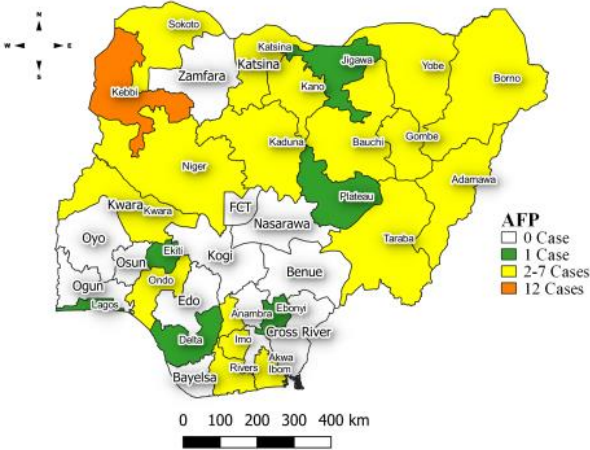
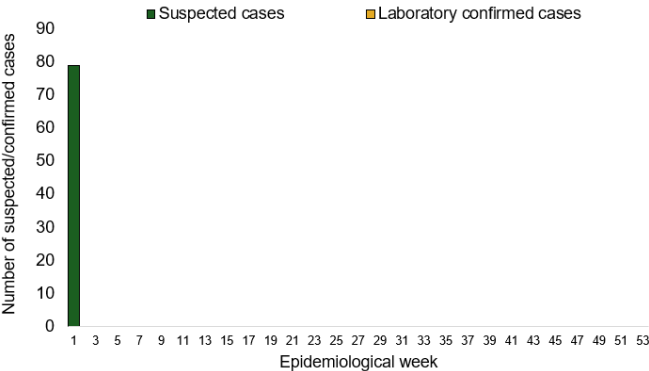
Suspected cases	Confirmed cases	Deaths	Number of States and LGAs affected
79	0	0	State: 24 LGA: 69

Year to date (week 1 – 52)

Suspected cases		Confirmed cases		Deaths		CFR	
2024	2025	2024	2025	2024	2025	2024	2025
143	79	0	0	0	0	0%	0%

Figure 13: Number of suspected and confirmed cases of AFP, Nigeria, weeks 1 – 52, 2025

Figure 14: Location of suspected cases of AFP by State, Nigeria, week 1, 2025



Key points

- There were 79 suspected cases of AFP reported from 69 LGAs in 24 states. There was no laboratory confirmed case and no death was recorded.

National Influenza Sentinel Surveillance

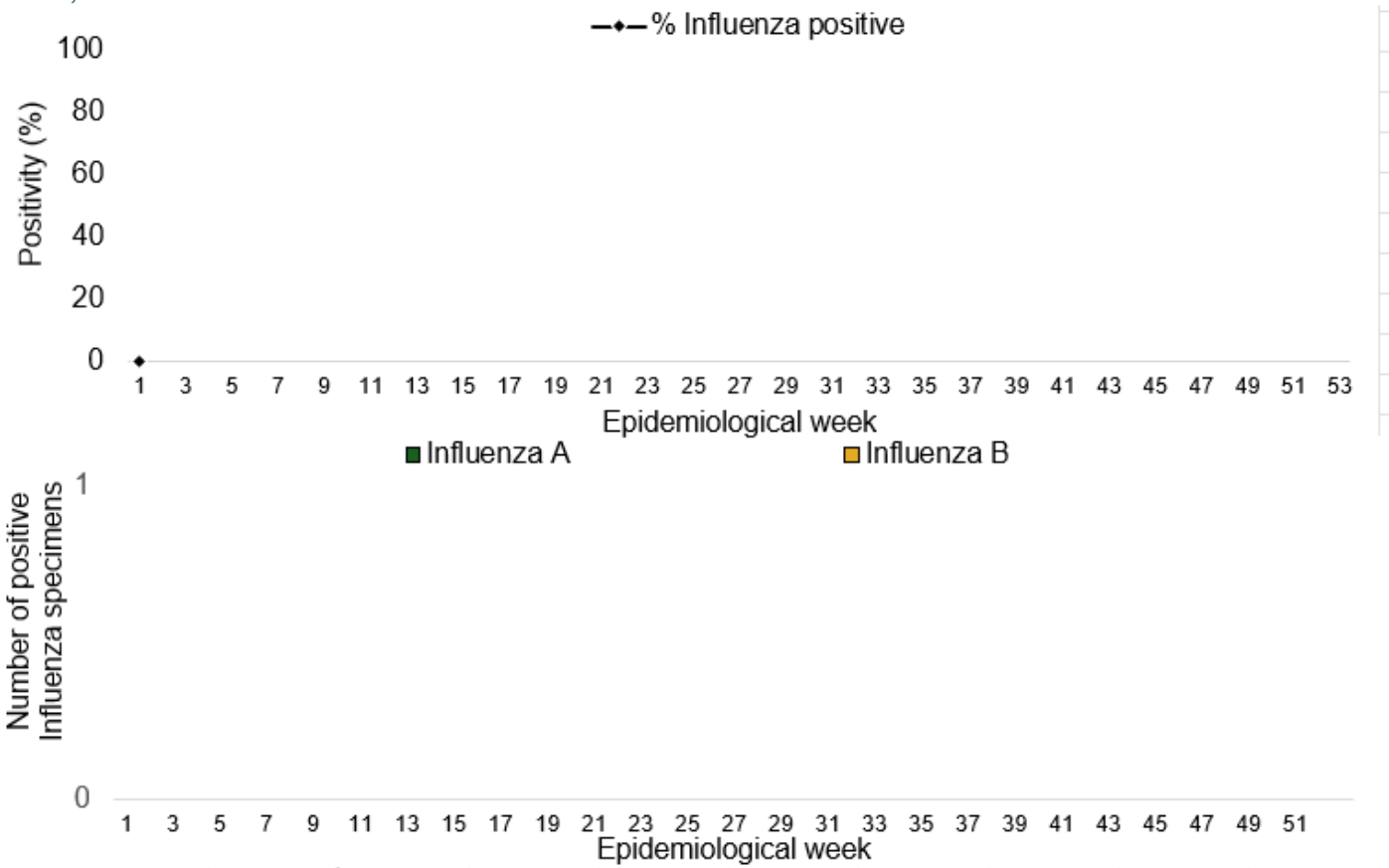
Week 1

Suspected Cases	Confirmed Cases	Confirmed Case by type	
		Influenza A	Influenza B
4	0	0	0

Year to date (week 1 – 52)

Suspected cases	Total Confirmed Cases	Confirmed cases by type	
4	0	Influenza A	Influenza B
		0	0

Figure 15: Number of influenza positive specimens by type and percentage positive by epidemiological week, 2025.



Coronavirus Disease (COVID-19)

Week 1

Suspected cases	Confirmed cases	Deaths	Number of States and LGAs affected
0	0	0	State: 0 LGA: 0

Year to date (Week 1- 52)

Suspected cases		Confirmed cases		Deaths		CFR	
2024	2025	2024	2025	2024	2025	2024	2025
12	0	12	0	0	0	0%	0%

Figure 16: Epidemic curve of confirmed cases of COVID-19, Nigeria, week 1 - 52, 2025

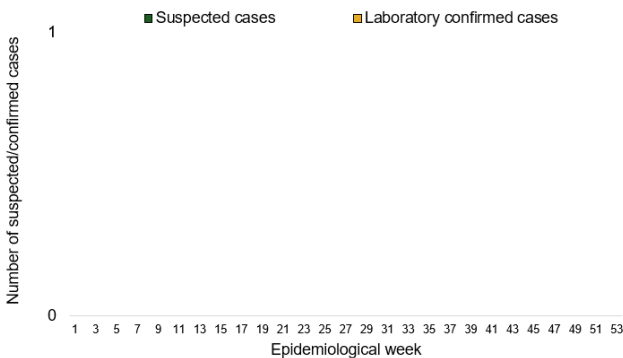
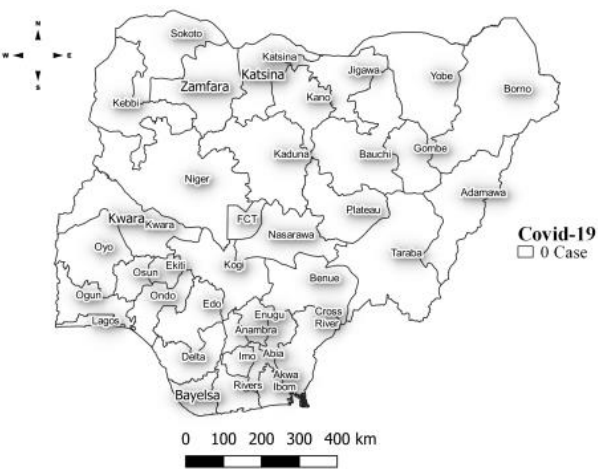


Figure 17: Location of **confirmed** cases of COVID-19 by State, Nigeria, as at week 1, 2025



Key points

- There was no case reported for the week

## Diphtheria

### Week 1

Suspected cases	Confirmed cases	Deaths	Number of States and LGAs affected
187	114	6	State: 5 LGA: 27

### Year to date (week 1 – 52)

Suspected cases		Confirmed cases		Deaths		CFR	
2024	2025	2024	2025	2024	2025	2024	2025
591	187	300	114	5	6	0.8%	3.2%

Figure 18: Number of suspected and confirmed cases of Diphtheria, Nigeria, weeks 1 – 52, 2025

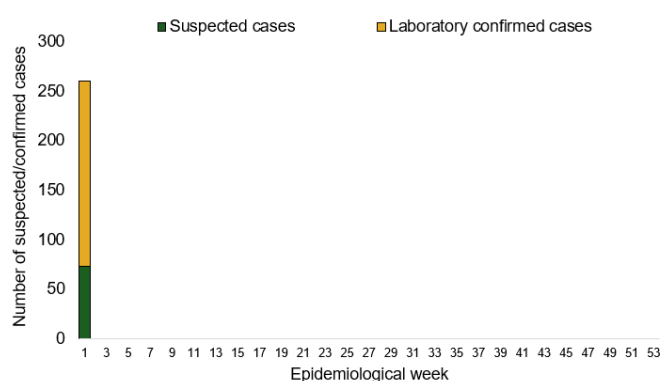
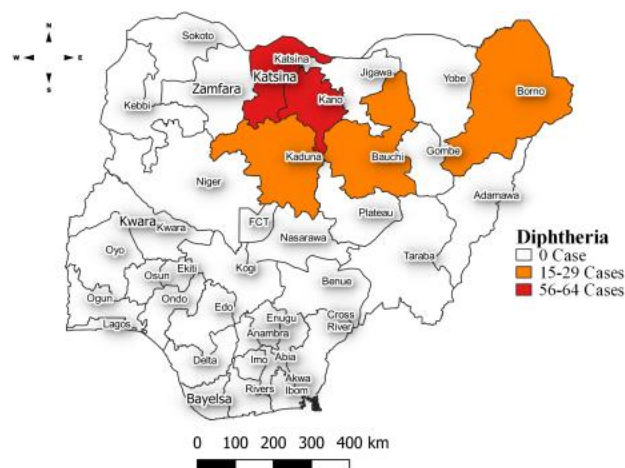


Figure 19: Location of suspected cases of Diphtheria by State, Nigeria, week 1, 2025



## Key points

- There were 187 suspected cases of Diphtheria reported from 27 LGAs in five states. There were 114 confirmed cases and six deaths were recorded.

## Actions To date

- National Diphtheria Technical Working Group (TWG) is monitoring activities in all states.
- Provides technical and offsite support to states on case identification, reporting and response especially non-reporting and low burden states
- Treatment Centre engagement
- Prepositioning of DAT across states and facilities.
- Preliminary and confirmatory testing at sub-national and national level, respectively.

Event Based Surveillance (EBS)

Week 1

Key points

Week 1 (30<sup>th</sup> December 2024 – 5<sup>th</sup> January 2025)

- 82 Calls were successfully routed to agents and answered
- 0 calls not routed to agents (Failed call)
- 82 total number of calls (successful and failed)
- 0 number of SMS received
- 0 WhatsApp/live chat messages received
- The percentage of failed to total inbound calls 0.0%
- 1 signal picked

Cumulatively, from 30<sup>th</sup> December 2024 – 5<sup>th</sup> January 2025

- 82 calls were successfully routed to agents and answered
- 0 calls not routed to agents (Failed call)
- 82 total inbound calls recorded
- The Percentage of failed to total inbound calls: 0.0%
- 1 Signal was picked and escalated

Figure 20: Number of successful and failed calls, weeks 1 – 52, 2025

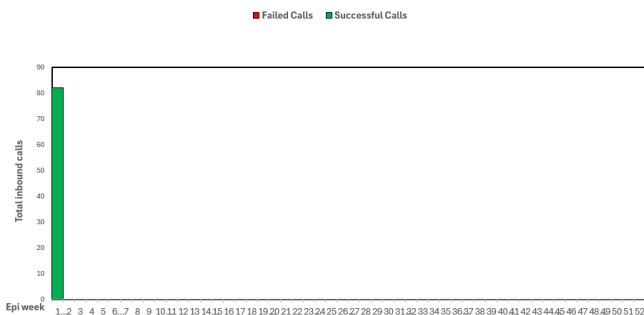


Figure 21: Number of signals/events per week 1, 2025

