



NIGERIA CENTRE FOR DISEASE
CONTROL AND PREVENTION

Nigeria Centre for Disease Control and Prevention

Protecting the health of Nigerians

Weekly Epidemiological Report

Week 46: 11th – 17th November 2024

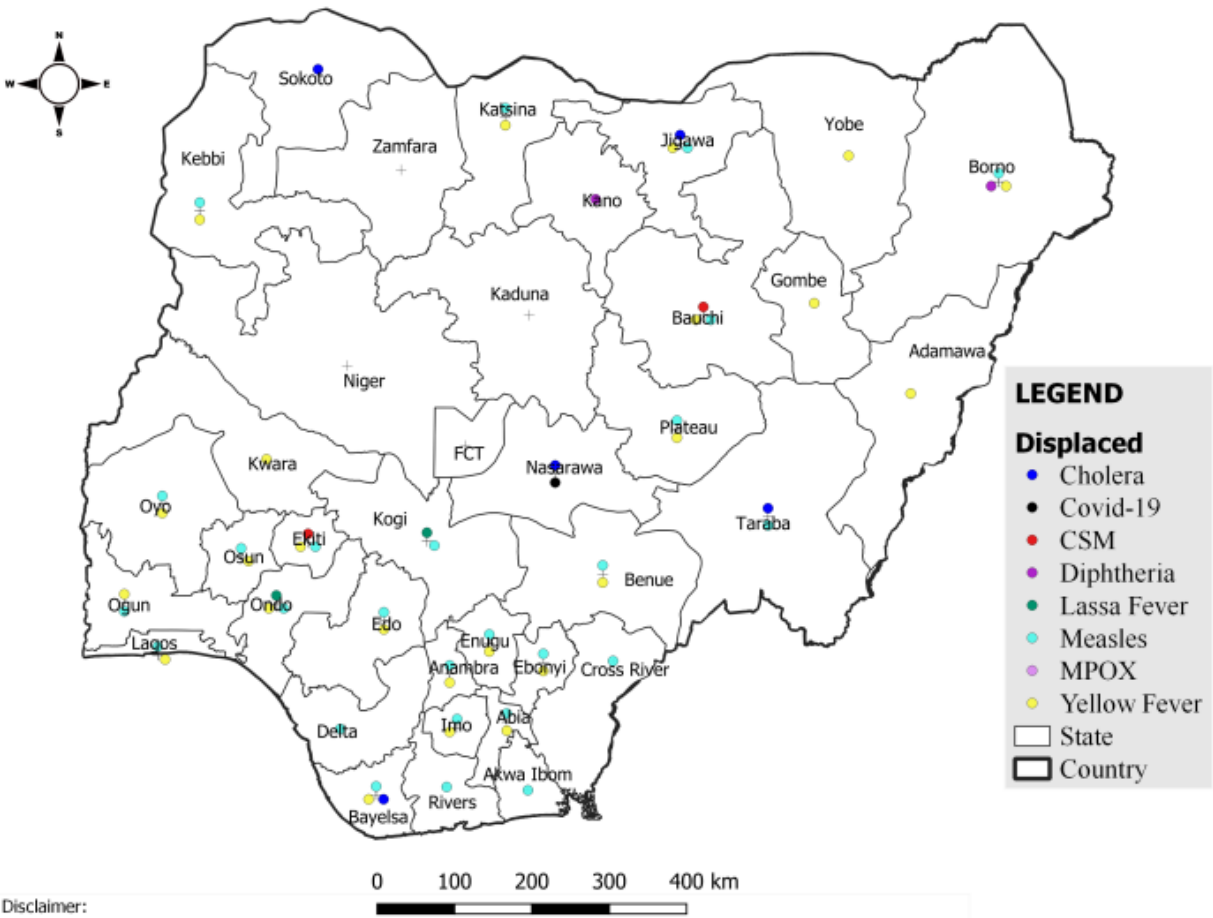
Summary of Incidents

Ongoing incidents

2

Ongoing incidents are defined as confirmed cases where a national EOC or equivalent has been activated (Cholera and Diphtheria)

Other incidents are those with confirmed cases for which EOC is not activated



Summary

Week 46: 11th – 17th November 2024

Lassa Fever ^{1,2}	Cerebrospinal Meningitis (CSM) ^{1,4}	Yellow Fever ^{1,4}
123 Suspected case(s)	2 Suspected case(s)	62 Suspected case(s)
8 Confirmed case(s)	0 Confirmed case(s)	0 Confirmed case(s)
0 Death(s)	0 Death(s)	0 Death(s)
Cholera ^{1,4}	Measles ^{1,4}	Mpox ^{1,4}
777 Suspected case(s)	148 Suspected case(s)	40 Suspected case(s)
1 Confirmed case(s)	6 Confirmed case(s)	7 Confirmed case(s)
13 Death(s)	0 Death(s)	0 Death(s)
Acute Flaccid Paralysis (AFP) ^{1,4}	National Sentinel influenza surveillance ⁵	Coronavirus Disease ^{1,}
70 Suspected case(s)	7 Suspected case(s)	11 Suspected case(s)
0 Confirmed case(s)	0 Confirmed case(s)	0 Confirmed case(s)
0		0 Death(s)
Diphtheria ^{1,4}		
44 Suspected case(s)		
32 Confirmed case(s)		
1 Death(s)		

1. Information for this disease was retrieved from the Technical Working Group and Situation Reports
2. Case Fatality Rate (CFR) for this disease is reported for confirmed cases only.
3. CFR for this disease is reported for total cases i.e. suspected + confirmed.
4. Information for sentinel influenza was retrieved from the laboratory.

Lassa Fever

Week 46

Suspected cases	Confirmed cases	Deaths	Number of States and LGAs affected
123	8	0	State: 17 + FCT LGA: 24

Year to date (week 1 – 46)

Suspected cases		Confirmed cases		Deaths		CFR	
2023	2024	2023	2024	2023	2024	2023	2024
8302	9032	1144	1077	194	175	17%	16.2%

Figure 1: Number of suspected and confirmed cases of Lassa Fever, Nigeria, Weeks 1 – 46, 2024

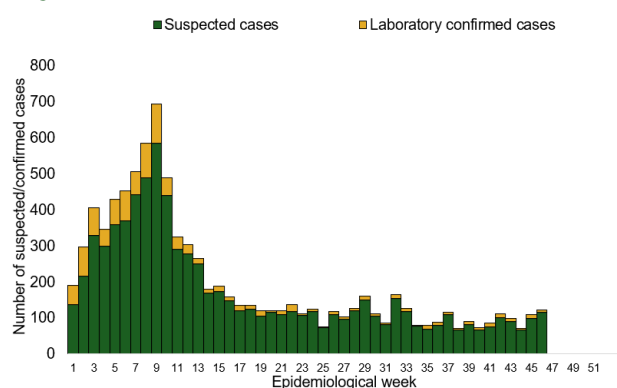
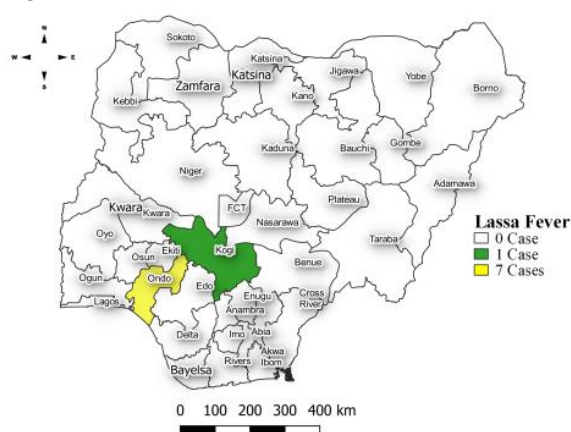


Figure 2: Location of confirmed cases of Lassa Fever by State, Nigeria, week 46, 2024



Key points

- There were 123 suspected cases of Lassa Fever reported from 24 LGAs in 17 states and FCT. There were eight laboratory confirmed cases and no death was recorded.

Actions

To date:

- National Lassa fever multi-partner, multi-sectoral Technical Working Group (TWG) continues to coordinate the response activities at all levels.
- Analysed the readiness assessment across the 36 states and the FCT
- Participated on a learning visit to the Medical Research Council Unit The Gambia (MRCG) at the London School of Hygiene & Tropical Medicine (LSHTM)
- Held the 1st Webinar in the series in collaboration with the RCCE pillar/partners
- Finalize and share the report of the readiness survey across all levels
- Continuous coordination of the webinar series in collaboration with all pillar leads

Cerebrospinal Meningitis (CSM)

Week 46

Suspected cases	Confirmed cases	Deaths	Number of States and LGAs affected
2	0	0	State: 2 LGA: 2

Year to date (week 1 – 46)

Suspected cases		Confirmed cases		Deaths		CFR	
2023	2024	2023	2024	2023	2024	2023	2024
1995	3060	75	50	75	128	3.7%	4.2%

Figure 3: Number of suspected and confirmed cases of CSM, Nigeria, weeks 1 – 46, 2024

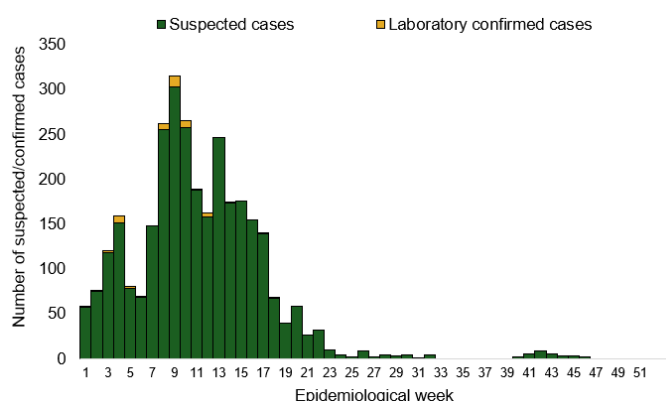
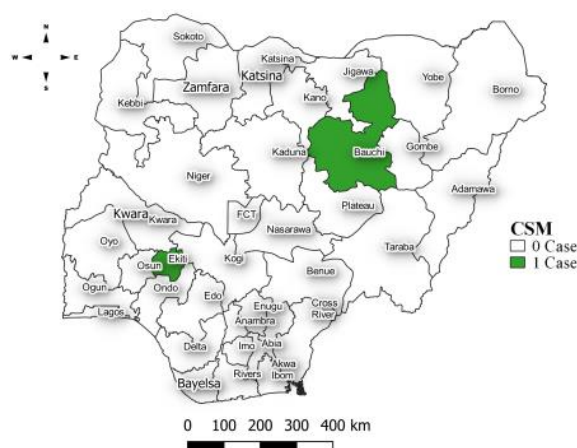


Figure 4: Location of suspected cases of CSM by State, Nigeria, week 46, 2024



Key points

- There were two suspected cases of Cerebrospinal meningitis (CSM) reported from two LGAs in two states. There was no laboratory confirmed case and no death was recorded.

Actions

To date:

- National CSM TWG meets weekly to review reports from states and plan appropriately.
- Providing offsite/onsite support to states and follow up for daily reporting and progress with response activities
- Implementation of CSM reactive vaccination campaign in high burden LGAs/Wards in Jigawa state led by NPHCDA
- Activated Multi-sectoral State-level Emergency Operation Centres (EOCs) in Jigawa and Yobe, Katsina, Bauchi and Gombe state

Yellow Fever

Week 46

Suspected cases	Confirmed cases	Deaths	Number of States and LGAs affected
62	0	0	State: 25 LGA: 42

Year to date (week 1 – 46)

Suspected cases		Confirmed cases		Deaths		CFR	
2023	2024	2023	2024	2023	2024	2023	2024
2730	2531	22	23	9	2	0.3%	0.08%

Figure 5: Number of suspected and confirmed cases of Yellow Fever, Nigeria, weeks 1 – 46, 2024

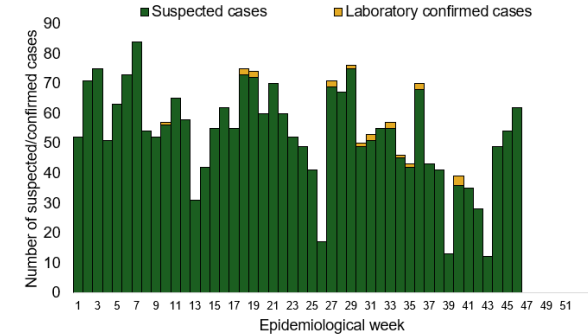
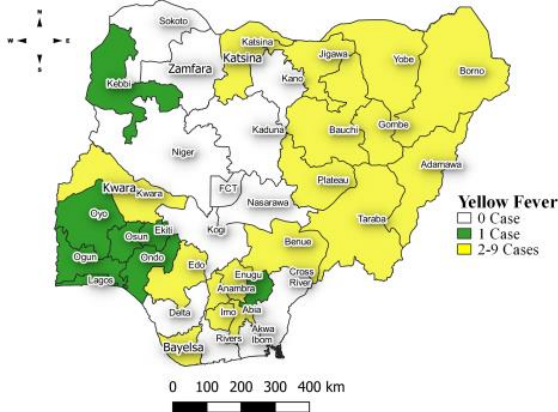


Figure 6: Location of suspected cases of Yellow Fever by States, Nigeria, week 46, 2024



Key points

- There were 62 suspected cases of Yellow Fever (YF) reported from 42 LGAs in 25 states. There was no laboratory confirmed case and no death was recorded.

Actions

To date:

- National YF multi-partner Technical Working Group (TWG) continues to coordinate activities across states.
- Conducted dynamic risk assessment to guide overall preparedness and response strategies.
- Provided off-site support to states to Ondo and Bayelsa states with confirmed cases
- Harmonizing surveillance and laboratory data
- Regular sample testing at the regional reference laboratories
- Coordination of yellow fever sample management and transportation from all states to the regional reference laboratory

Cholera

Week 46

Suspected cases	Confirmed cases	Deaths	Number of States and LGAs affected
777	1	13	State: 11 LGA: 42

Year to date (week 1 – 46)

Suspected cases		Confirmed cases		Deaths		CFR	
2023	2024	2023	2024	2023	2024	2023	2024
3601	23683	45	408	84	711	2.3%	3%

Figure 7: Number of suspected and confirmed cases of Cholera, Nigeria, weeks 1 – 46, 2024

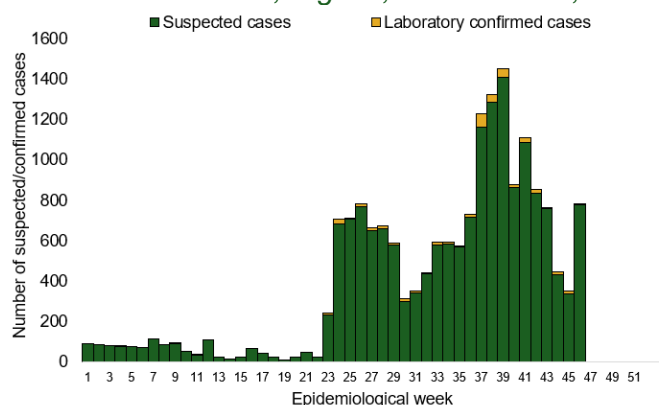
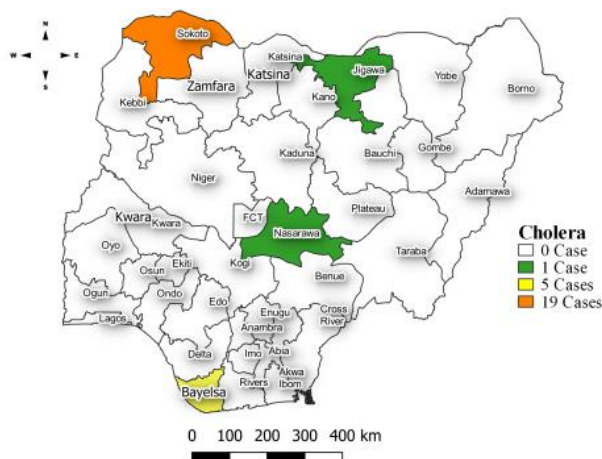


Figure 8: Location of suspected cases of Cholera by State, Nigeria, week 46, 2024



Key points

- There were 777 suspected cases of Cholera reported from 42 LGAs in 11 states. There was one laboratory confirmed case and 13 deaths were recorded.

Actions

To date

- National Cholera Multi-Sectoral Technical Working Group (TWG) is monitoring all states and supporting affected states.
- Activated the National Emergency Operating Centre (EOC) to monitor responses activities in all affected states
- On-site support in 9 states Lagos, Bayelsa, Abia, Zamfara, Bauchi, Katsina, Cross River, Ebonyi and Rivers
- Develop priority areas for multi-sectoral intervention (Hotspots mapping)

Measles

Week 46

Suspected cases	Confirmed cases	Deaths	Number of States and LGAs affected
148	6	0	State: 26 LGA: 60

Year to date (week 1 – 46)

Suspected cases		Confirmed cases		Deaths		CFR	
2023	2024	2023	2024	2023	2024	2023	2024
19058	16688	1916	2523	121	97	0.6%	0.6%

Figure 9: Number of suspected and confirmed cases of Measles, Nigeria, weeks 1 – 46, 2024.

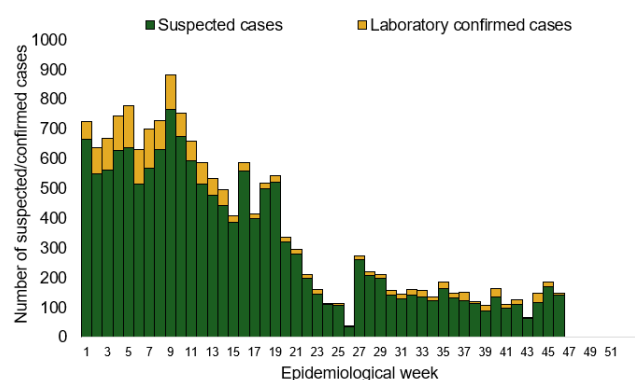
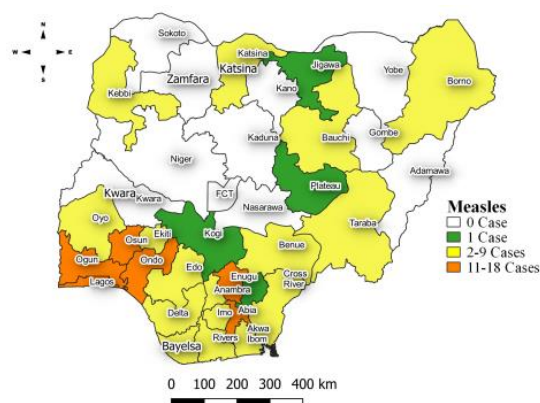


Figure 10: Location of suspected cases of Measles by State, Nigeria, week 46, 2024



Key points

- There were 148 suspected cases of Measles reported from 60 LGAs in 26 states. There were six laboratory confirmed cases and no death was recorded.

Actions

To date

- National Measles TWG is closely monitoring measles surveillance data and providing feedback to relevant agencies and development partners.
- Supported NPHCDA in the pre-implementation and implementation of 2024 Integrated Supplementary Immunization Activities (SIA)
- Distribution of Measles and Rubella Surveillance Guidelines:
- Supported the validation of the National Measles Elimination Strategic Plan (2019–2028) workshop
- Validated the Measles Outbreak Preparedness and Response (MOBR) Training Materials to standardize training content and materials for outbreak preparedness

Mpox

Week 46

Suspected cases	Confirmed cases	Deaths	Number of States and LGAs affected
40	7	0	State: 5 LGA: 16

Year to date (week 1 – 46)

Suspected cases		Confirmed cases		Deaths		CFR	
2023	2024	2023	2024	2023	2024	2023	2024
931	1236	80	103	2	0	0.2%	0%

Figure 11: Number of suspected and confirmed cases of Mpox, Nigeria, weeks 1 – 46, 2024.

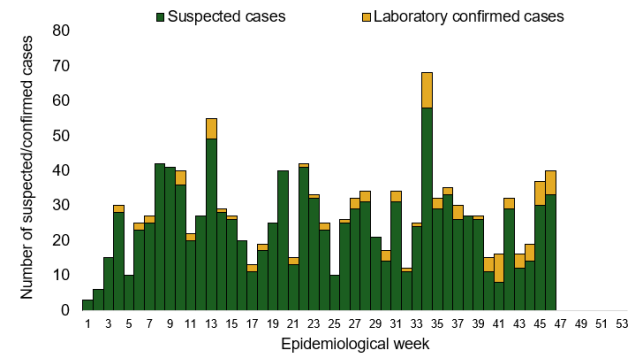
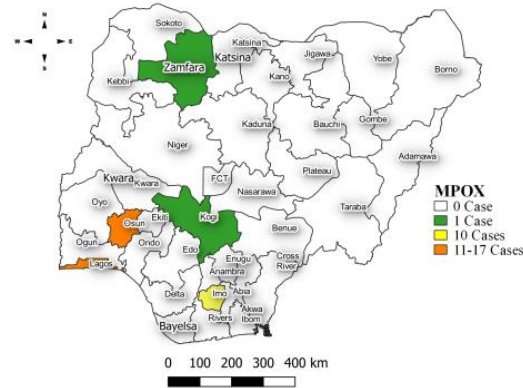


Figure 12: Location of suspected cases of Mpox by State, Nigeria, week 46, 2024



Key points

- There were 40 suspected cases of Mpox reported from 16 LGAs in five states. There were seven laboratory confirmed cases and no death was recorded.

Actions

To date

- Mpox Incident Management System activated to coordinate response activities
- Supported training of state Epidemiologist and DSNO with surveillance support staff
- Optimisation of 6 laboratories for Mpox testing and supported remote capacity building of laboratory staff at the Molecular Laboratories
- Conducted capacity building of health educators on Mpox RCCE and Content development for RCCE materials
- Supported the coordination of mpox research (UKPHRST/ NCDC study on Mpox collaborative study

Acute Flaccid Paralysis (AFP)

Week 46

Suspected cases	Confirmed cases	Deaths	Number of States and LGAs affected
70	0	0	State: 23 LGA: 56

Year to date (week 1 – 46)

Suspected cases		Confirmed cases		Deaths		CFR	
2023	2024	2023	2024	2023	2024	2023	2024
6159	5368	0	0	0	0	0%	0%

Figure 13: Number of suspected and confirmed cases of AFP, Nigeria, weeks 1 – 46, 2023

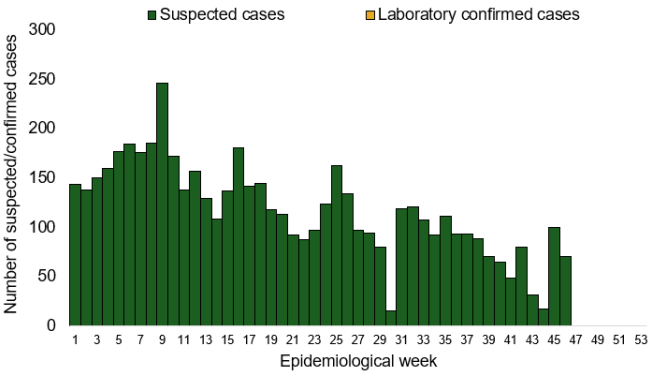
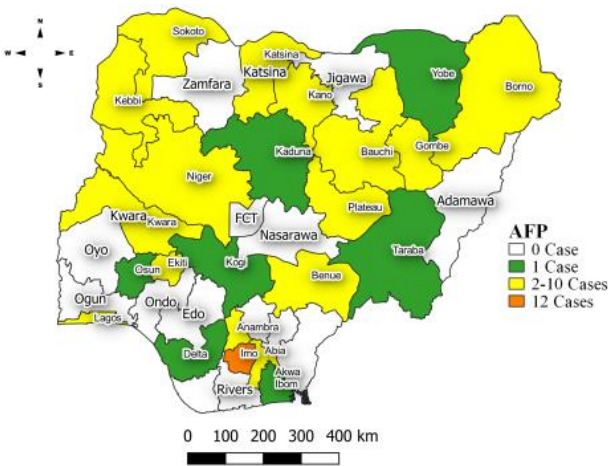


Figure 14: Location of suspected cases of AFP by State, Nigeria, week 46, 2024



Key points

- There were 70 suspected cases of AFP reported from 56 LGAs in 23 states. There was no laboratory confirmed case and no death was recorded.

National Influenza Sentinel Surveillance

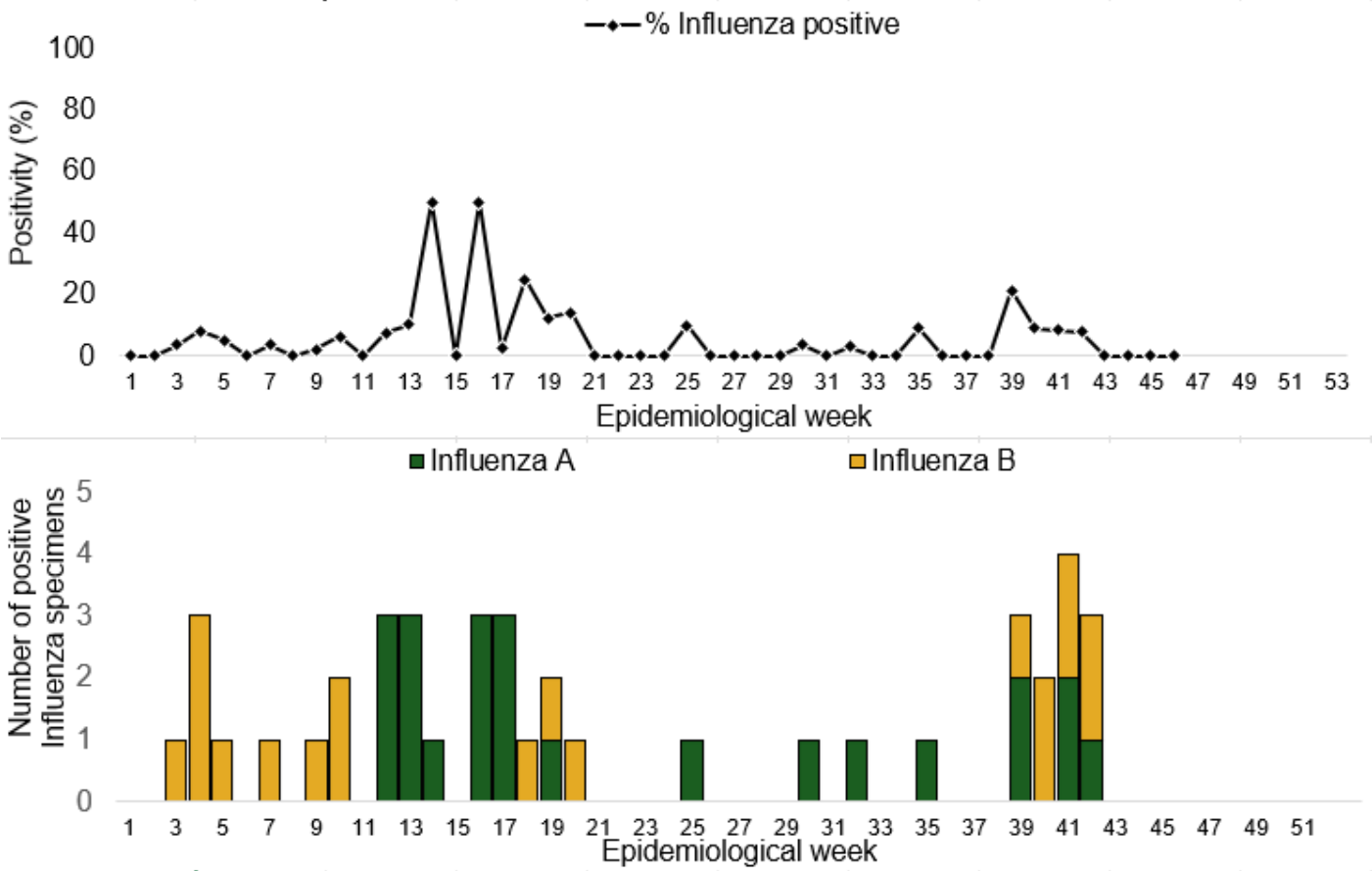
Week 46

Suspected Cases	Confirmed Cases	Confirmed Case by type	
		Influenza A	Influenza B
7	0	0	0

Year to date (week 1 – 46)

Suspected cases	Total Confirmed Cases	Confirmed cases by type	
781	42	Influenza A	Influenza B
		23	19

Figure 15: Number of influenza positive specimens by type and percentage positive by epidemiological week, 2024.



Coronavirus Disease (COVID-19)

Week 46

Suspected cases	Confirmed cases	Deaths	Number of States and LGAs affected
11	0	0	State: 1 LGA: 1

Year to date (Week 1- 46)

Suspected cases		Confirmed cases		Deaths		CFR	
2023	2024	2023	2024	2023	2024	2023	2024
64675	1848	661	804	181	1	0.3%	0.05%

Figure 16: Epidemic curve of confirmed cases of COVID-19, Nigeria, week 1 - 46, 2024

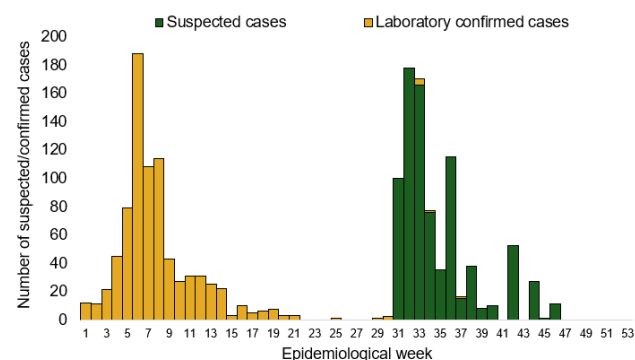
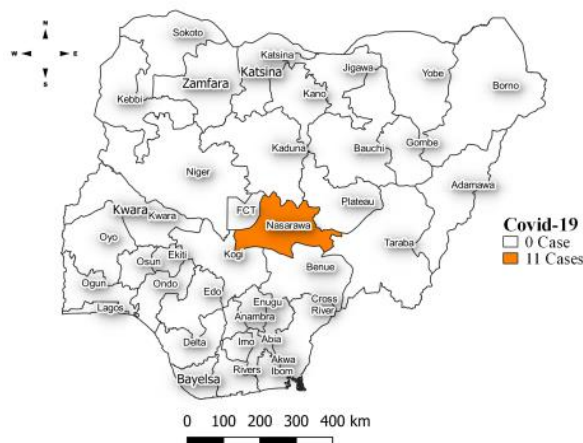


Figure 17: Location of **confirmed** cases of COVID-19 by State, Nigeria, as at week 46, 2024



Key points

- There were 11 suspected cases of Covid 19 reported from one LGA in Nasarawa state. There was no laboratory confirmed case and no death was recorded.

Actions

To date

- Follow up with the Lab Data team to ensure Data entry on SORMAS
- Harmonization meeting of Covid-19 and National influenza Sentinel Sites
- Enhanced surveillance activity to encourage test rates
- Coordinate training sessions for surveillance officers on proper data entry protocols for SORMAS.
- Implement regular site visits to verify data quality and compliance with harmonization protocols

Diphtheria

Week 46

Suspected cases	Confirmed cases	Deaths	Number of States and LGAs affected
44	32	1	State: 2 LGA: 13

Year to date (week 1 – 46)

Suspected cases		Confirmed cases		Deaths		CFR	
2023	2024	2023	2024	2023	2024	2023	2024
20289	16792	11854	10363	739	470	3.6%	2.8%

Figure 18: Number of suspected and confirmed cases of Diphtheria, Nigeria, weeks 1 – 46, 2024

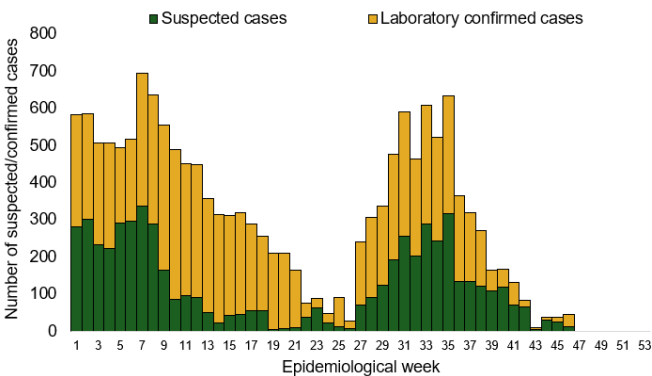
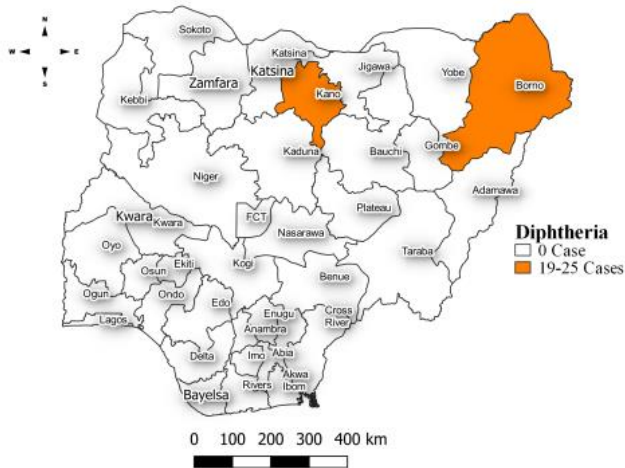


Figure 19: Location of suspected cases of Diphtheria by State, Nigeria, week 46, 2024



Key points

- There were 44 suspected cases of Diphtheria reported from 13 LGAs in two states. There were 32 confirmed cases and one death was recorded.

Actions

To date

- National Diphtheria Technical Working Group (TWG) is monitoring activities in all states.
- Developed Diphtheria surveillance and outbreak response guidelines
- Established Diphtheria laboratory testing network across state
- Conducted case management and IPC training for healthcare workers involved in Diphtheria case management
- Supported NPHCDA in the Implemented reactive mass vaccinations campaign in affected states across states

Event Based Surveillance (EBS)

Week 46

Key points

For the reporting week 46

- 113 Calls were successfully routed to agents and answered
- 0 calls not routed to agents (Failed call)
- 113 total number of calls (successful and failed)
- 0 number of SMS received
- 0 WhatsApp/live chat messages received
- The percentage of failed to total inbound calls 0%
- 2 signals picked and escalated to the respective States
 - Lassa Fever kills 11 people in Benue State mined through Daily Trust Newspaper
 - 4 confirmed death of Lassa Fever in Oyo State news gotten on X (social media)

For week 1 – 46

- 6,093 calls were successfully routed to agents and answered
- 210 calls not routed to agents (Failed call)
- 6,308 total inbound calls recorded
- The Percentage of failed to total inbound calls: 3.3%
- 78 Signals were picked and escalated

Categories of Calls

- General inquiries
- Hoax call and others
- Enquiries on COVID-19 vaccination certificate 5
- Report of health conditions 16
- Inquiry on Cholera 12
- Inquiry on malaria vaccine
- Health Declaration form-related queries
- Inquiries on Diphtheria symptoms, treatment, and Vaccine
- Inquiries on yellow fever vaccine 8
- Inquiries on Lassa fever 13
- Inquiries on Mpox 31
- Inquiries on Mpox vaccine 28

Figure 20: Number of successful and failed calls, weeks 1 – 46, 2024

