



NIGERIA CENTRE FOR DISEASE
CONTROL AND PREVENTION

Nigeria Centre for Disease Control and Prevention

Protecting the health of Nigerians

Weekly Epidemiological Report

Week 44: 28th October – 3rd November 2024

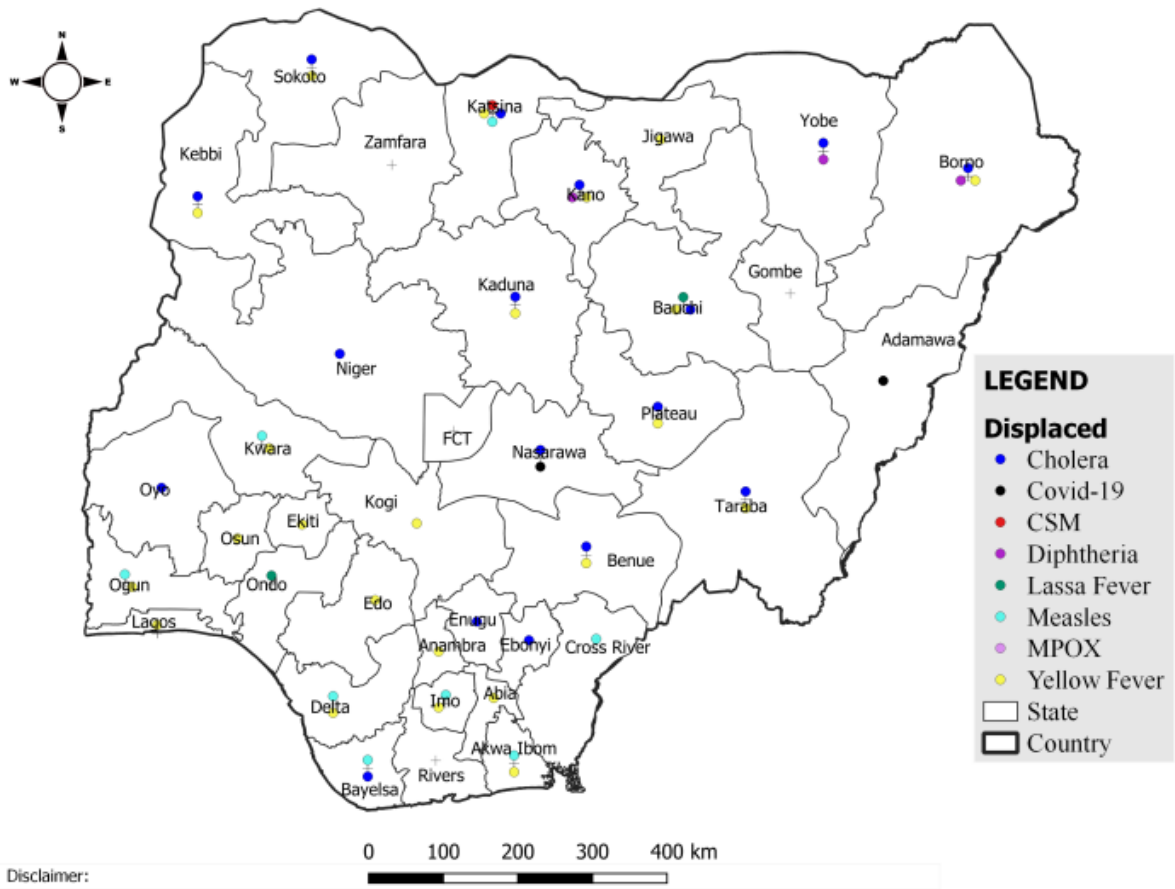
Summary of Incidents

Ongoing incidents

2

Ongoing incidents are defined as confirmed cases where a national EOC or equivalent has been activated (Cholera and Diphtheria)

Other incidents are those with confirmed cases for which EOC is not activated



Summary

Week 44: 28th October – 3rd November 2024

Lassa Fever ^{1,2}	Cerebrospinal Meningitis (CSM) ^{1,4}	Yellow Fever ^{1,4}
70 Suspected case(s)	3 Suspected case(s)	49 Suspected case(s)
4 Confirmed case(s)	0 Confirmed case(s)	0 Confirmed case(s)
0 Death(s)	0 Death(s)	0 Death(s)
Cholera ^{1,4}	Measles ^{1,4}	Mpox ^{1,4}
448 Suspected case(s)	147 Suspected case(s)	19 Suspected case(s)
14 Confirmed case(s)	29 Confirmed case(s)	5 Confirmed case(s)
26 Death(s)	1 Death(s)	0 Death(s)
Acute Flaccid Paralysis (AFP) ^{1,4}	National Sentinel influenza surveillance ⁵	Coronavirus Disease ^{1,}
17 Suspected case(s)	23 Suspected case(s)	27 Suspected case(s)
0 Confirmed case(s)	0 Confirmed case(s)	0 Confirmed case(s)
0 Death(s)		0 Death(s)
Diphtheria ^{1,4}		
38 Suspected case(s)		
8 Confirmed case(s)		
2 Death(s)		

1. Information for this disease was retrieved from the Technical Working Group and Situation Reports
2. Case Fatality Rate (CFR) for this disease is reported for confirmed cases only.
3. CFR for this disease is reported for total cases i.e. suspected + confirmed.
4. Information for sentinel influenza was retrieved from the laboratory.

Lassa Fever

Week 44

Suspected cases	Confirmed cases	Deaths	Number of States and LGAs affected
70	4	0	State: 6 + FCT LGA: 13

Year to date (week 1 – 44)

Suspected cases		Confirmed cases		Deaths		CFR	
2023	2024	2023	2024	2023	2024	2023	2024
8082	8850	1115	1059	188	175	16.9%	16.5%

Figure 1: Number of suspected and confirmed cases of Lassa Fever, Nigeria, Weeks 1 – 44, 2024

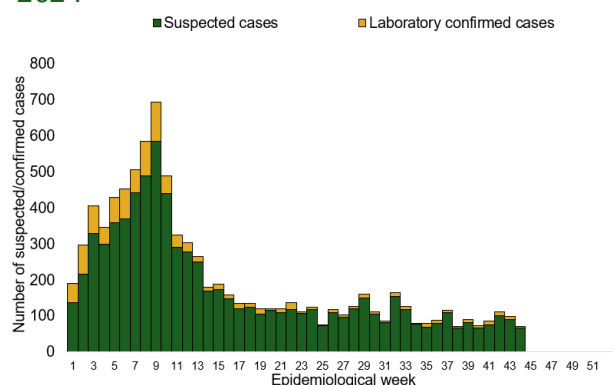
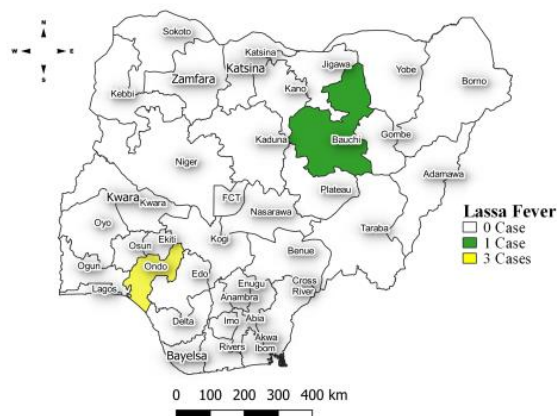


Figure 2: Location of confirmed cases of Lassa Fever by State, Nigeria, week 44, 2024



Key points

- There were 70 suspected cases of Lassa Fever reported from 13 LGAs in six states and FCT. There were four laboratory confirmed cases and no death was recorded.

Actions

To date:

- National Lassa fever multi-partner, multi-sectoral Technical Working Group (TWG) continues to coordinate the response activities at all levels.
- Rehosted the Lassa fever clinical IDSR course in partnership with RTSL, NPHCDA and AFENET
- Distributed the implementation plan for the Lassa fever webinar series to all pillars of focus
- Provided feedback to all States sending daily and weekly situation
- Roll out the Lassa Fever Readiness Webinar Series from Friday 15th November 2024 to Friday 7th February 2025 to enhance prevention, early detection and prompt treatment of Lassa fever.
- Provide offsite support to states in collaboration with pillar leads to facilitate efficient use of human and material resources

Cerebrospinal Meningitis (CSM)

Week 44

Suspected cases	Confirmed cases	Deaths	Number of States and LGAs affected
3	0	0	State: 1 LGA: 1

Year to date (week 1 – 44)

Suspected cases		Confirmed cases		Deaths		CFR	
2023	2024	2023	2024	2023	2024	2023	2024
1984	3055	74	50	75	128	3.8%	4.2%

Figure 3: Number of suspected and confirmed cases of CSM, Nigeria, weeks 1 – 44, 2024

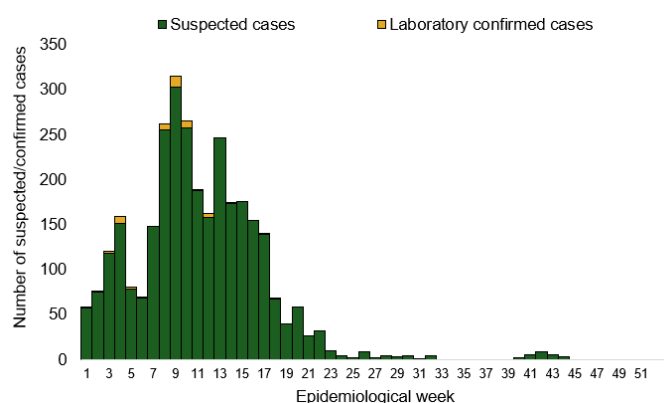
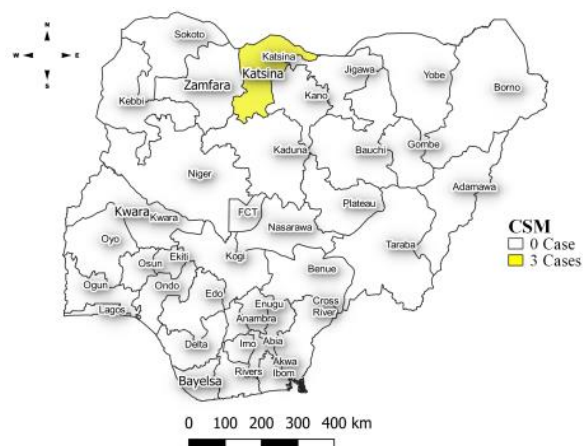


Figure 4: Location of suspected cases of CSM by State, Nigeria, week 44, 2024



Key points

- There were three suspected cases of Cerebrospinal meningitis (CSM) reported from one LGA in Katsina state. There was no laboratory confirmed case and no death was recorded.

Actions

To date:

- National CSM TWG meets weekly to review reports from states and plan appropriately.
- Providing offsite/onsite support to states and follow up for daily reporting and progress with response activities
- Implementation of CSM reactive vaccination campaign in high burden LGAs/Wards in Jigawa state led by NPHCDA
- Activated Multi-sectoral State-level Emergency Operation Centres (EOCs) in Jigawa and Yobe, Katsina, Bauchi and Gombe state

Yellow Fever

Week 44

Suspected cases	Confirmed cases	Deaths	Number of States and LGAs affected
49	0	0	State: 23 LGA: 40

Year to date (week 1 – 44)

Suspected cases		Confirmed cases		Deaths		CFR	
2023	2024	2023	2024	2023	2024	2023	2024
2685	2415	22	23	9	2	0.3%	0.1%

Figure 5: Number of suspected and confirmed cases of Yellow Fever, Nigeria, weeks 1 – 44, 2024

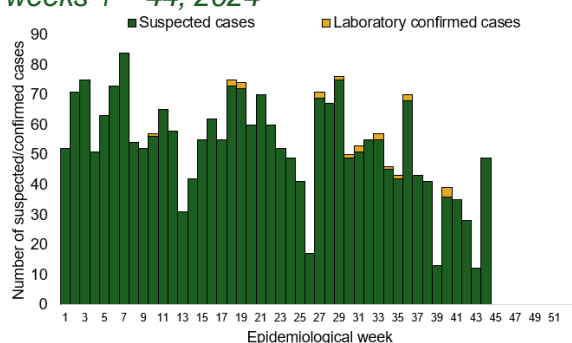
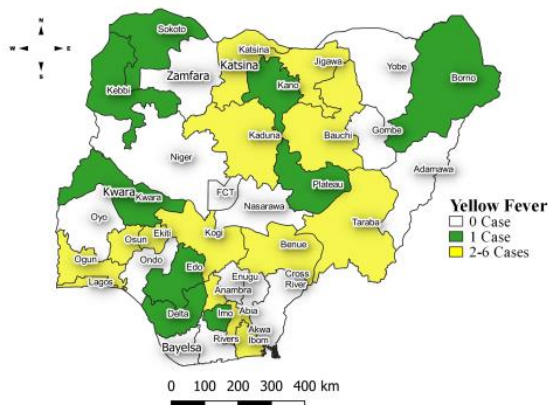


Figure 6: Location of suspected cases of Yellow Fever by States, Nigeria, week 44, 2024



Key points

- There were 49 suspected cases of Yellow Fever (YF) reported from 40 LGAs in 23 states. There was no laboratory confirmed case and no death was recorded.

Actions

To date:

- National YF multi-partner Technical Working Group (TWG) continues to coordinate activities across states.
- Conducted dynamic risk assessment to guide overall preparedness and response strategies.
- Provided off-site support to states to Ondo and Bayelsa states with confirmed cases
- Harmonizing surveillance and laboratory data
- Regular sample testing at the regional reference laboratories
- Coordination of yellow fever sample management and transportation from all states to the regional reference laboratory

Cholera

Week 44

Suspected cases	Confirmed cases	Deaths	Number of States and LGAs affected
448	14	26	State: 17 LGA: 39

Year to date (week 1 – 44)

Suspected cases		Confirmed cases		Deaths		CFR	
2023	2024	2023	2024	2023	2024	2023	2024
3541	18034	45	387	84	652	2.4%	3.6%

Figure 7: Number of suspected and confirmed cases of Cholera, Nigeria, weeks 1 – 44, 2024

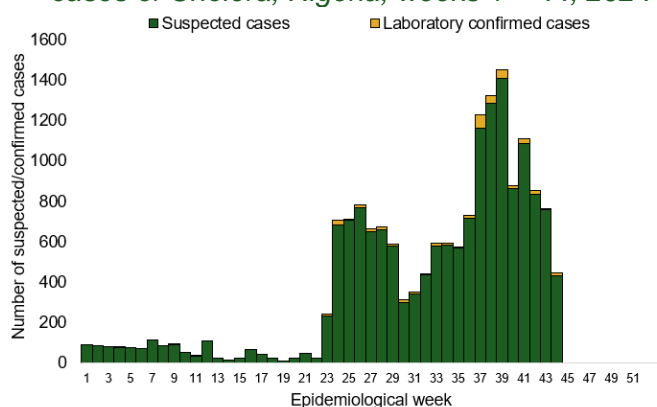
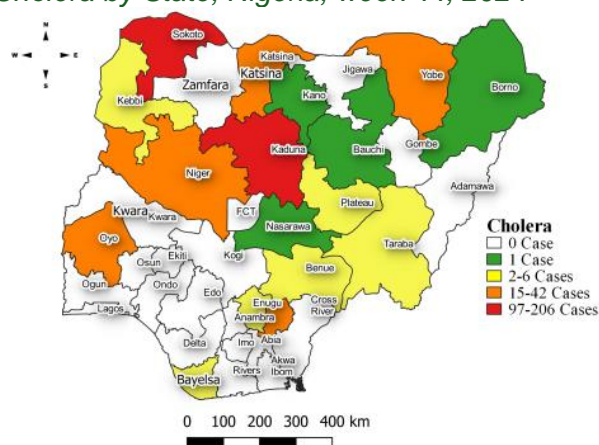


Figure 8: Location of suspected cases of Cholera by State, Nigeria, week 44, 2024



Key points

- There were 448 suspected cases of Cholera reported from 39 LGAs in 17 states. There were 14 laboratory confirmed cases and 26 deaths were recorded.

Actions

To date

- National Cholera Multi-Sectoral Technical Working Group (TWG) is monitoring all states and supporting affected states.
- Activated the National Emergency Operating Centre (EOC) to monitor responses activities in all affected states
- On-site support in 9 states Lagos, Bayelsa, Abia, Zamfara, Bauchi, Katsina, Cross River, Ebonyi and Rivers
- Develop priority areas for multi-sectoral intervention (Hotspots mapping)

Measles

Week 44

Suspected cases	Confirmed cases	Deaths	Number of States and LGAs affected
147	29	1	State: 29 + FCT LGA: 82

Year to date (week 1 – 44)

Suspected cases		Confirmed cases		Deaths		CFR	
2023	2024	2023	2024	2023	2024	2023	2024
18733	16355	1861	2502	120	97	0.6%	0.6%

Figure 9: Number of suspected and confirmed cases of Measles, Nigeria, weeks 1 – 44, 2024.

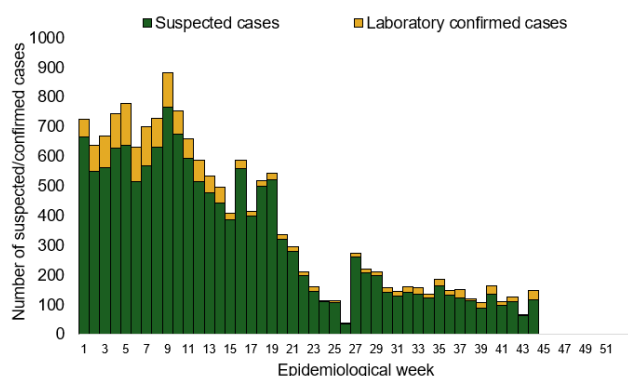
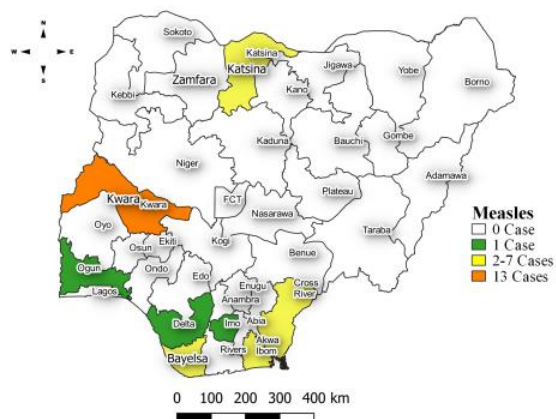


Figure 10: Location of suspected cases of Measles by State, Nigeria, week 44, 2024



Key points

- There were 147 suspected cases of Measles reported from 82 LGAs in 29 states and FCT. There were 29 laboratory confirmed cases and one death was recorded.

Actions

To date

- National Measles TWG is closely monitoring measles surveillance data and providing feedback to relevant agencies and development partners.
- Supported NPHCDA in the pre-implementation and implementation of 2024 Integrated Supplementary Immunization Activities (SIA)
- Distribution of Measles and Rubella Surveillance Guidelines:
- Supported the validation of the National Measles Elimination Strategic Plan (2019–2028) workshop
- Validated the Measles Outbreak Preparedness and Response (MOBR) Training Materials to standardize training content and materials for outbreak preparedness

Mpox

Week 44

Suspected cases	Confirmed cases	Deaths	Number of States and LGAs affected
19	5	0	State: 6 LGA: 15

Year to date (week 1 – 44)

Suspected cases		Confirmed cases		Deaths		CFR	
2023	2024	2023	2024	2023	2024	2023	2024
931	1159	80	89	2	0	0.2%	0.0%

Figure 11: Number of suspected and confirmed cases of Mpox, Nigeria, weeks 1 – 44, 2024.

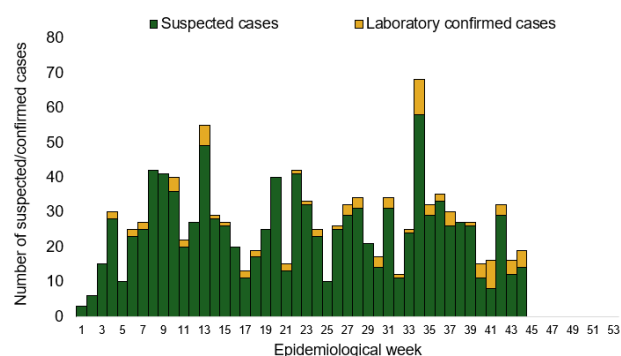
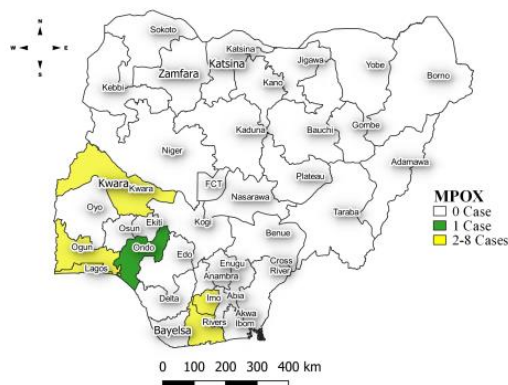


Figure 12: Location of suspected cases of Mpox by State, Nigeria, week 44, 2024



Key points

- There were 19 suspected cases of Mpox reported from 15 LGAs in six states. There were five laboratory confirmed cases and no death was recorded.

Actions

To date

- Mpox Incident Management System activated to coordinate response activities
- Supported training of state Epidemiologist and DSNO with surveillance support staff
- Optimisation of 6 laboratories for Mpox testing and supported remote capacity building of laboratory staff at the Molecular Laboratories
- Conducted capacity building of health educators on Mpox RCCE and Content development for RCCE materials
- Supported the coordination of mpox research (UKPHRST/ NCDC study on Mpox collaborative study)

Acute Flaccid Paralysis (AFP)

Week 44

Suspected cases	Confirmed cases	Deaths	Number of States and LGAs affected
17	0	0	State: 11 LGA: 15

Year to date (week 1 – 44)

Suspected cases		Confirmed cases		Deaths		CFR	
2023	2024	2023	2024	2023	2024	2023	2024
5901	5199	0	0	0	0	0%	0%

Figure 13: Number of suspected and confirmed cases of AFP, Nigeria, weeks 1 – 44, 2023

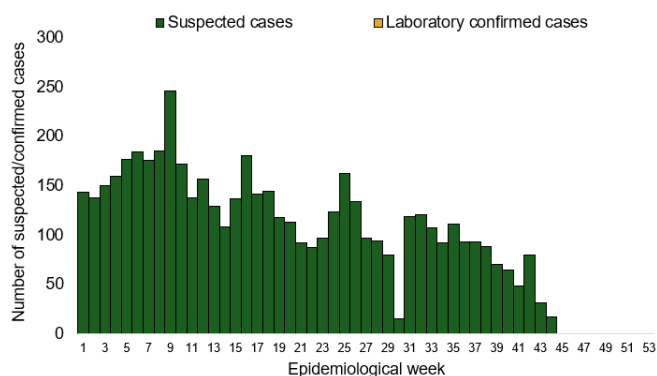
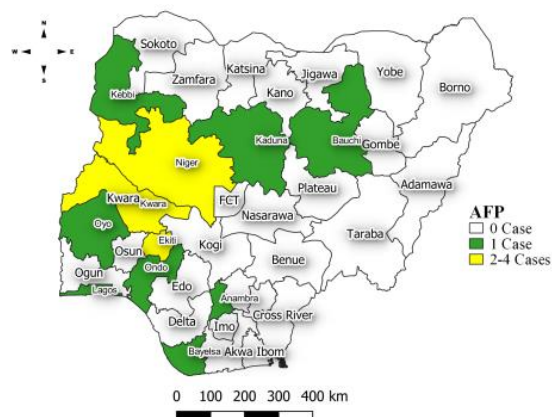


Figure 14: Location of suspected cases of AFP by State, Nigeria, week 44, 2024



Key points

- There were 17 suspected cases of AFP reported from 15 LGAs in 11 states. There was no laboratory confirmed case and no death was recorded.

National Influenza Sentinel Surveillance

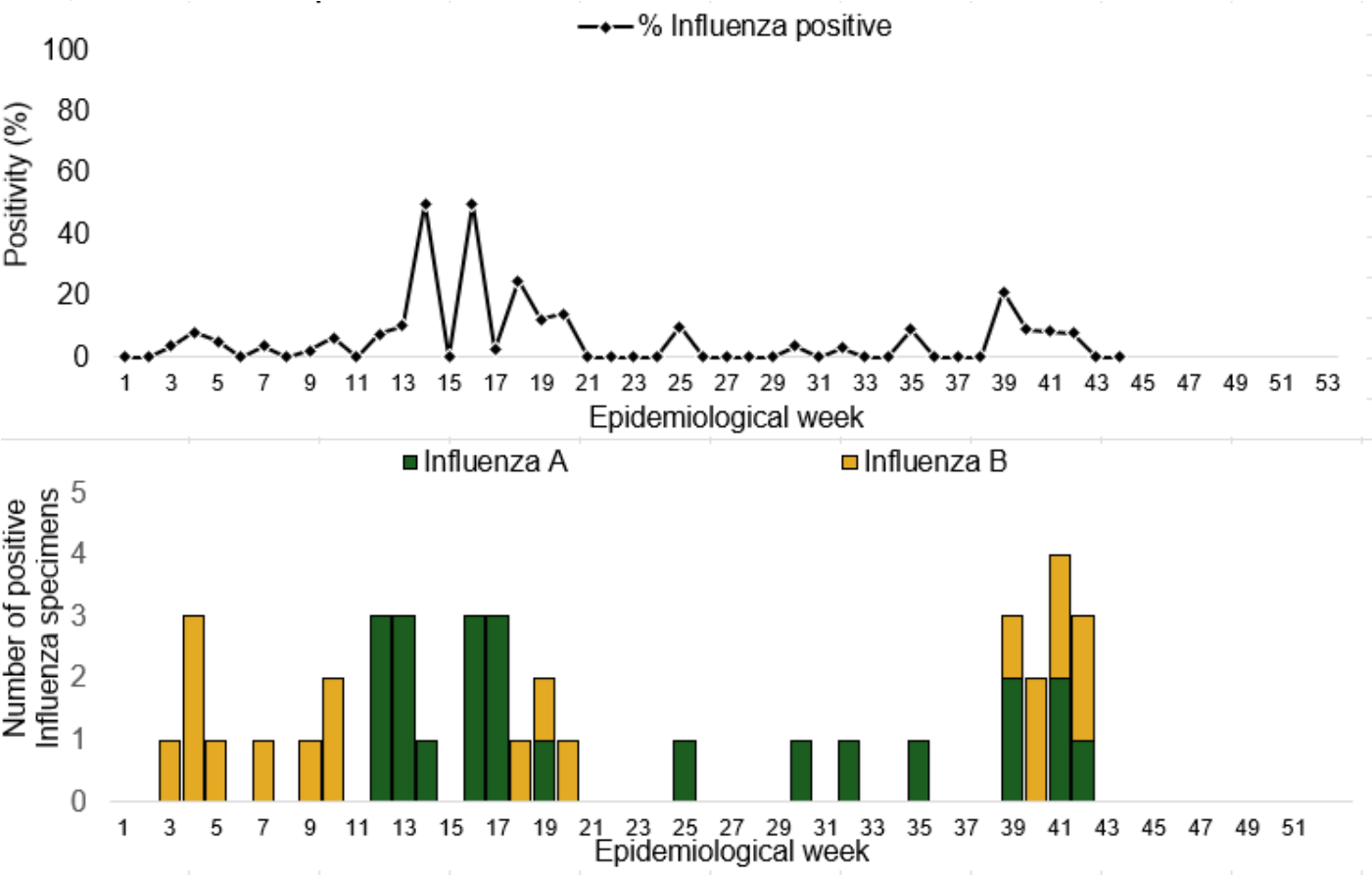
Week 44

Suspected Cases	Confirmed Cases	Confirmed Case by type	
		Influenza A	Influenza B
23	0	0	0

Year to date (week 1 – 44)

Suspected cases	Total Confirmed Cases	Confirmed cases by type	
757	42	Influenza A	Influenza B
		23	19

Figure 15: Number of influenza positive specimens by type and percentage positive by epidemiological week, 2024.



Coronavirus Disease (COVID-19)

Week 44

Suspected cases	Confirmed cases	Deaths	Number of States and LGAs affected
27	0	0	State: 2 LGA: 2

Year to date (Week 1- 44)

Suspected cases		Confirmed cases		Deaths		CFR	
2023	2024	2023	2024	2023	2024	2023	2024
64675	1836	6661	804	181	1	0.3%	0.1%

Figure 16: Epidemic curve of confirmed cases of COVID-19, Nigeria, week 1 - 44, 2024

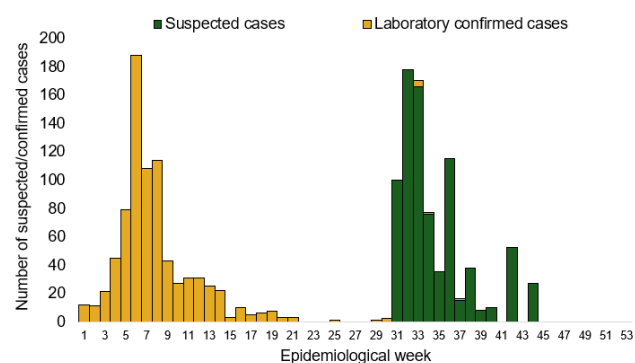
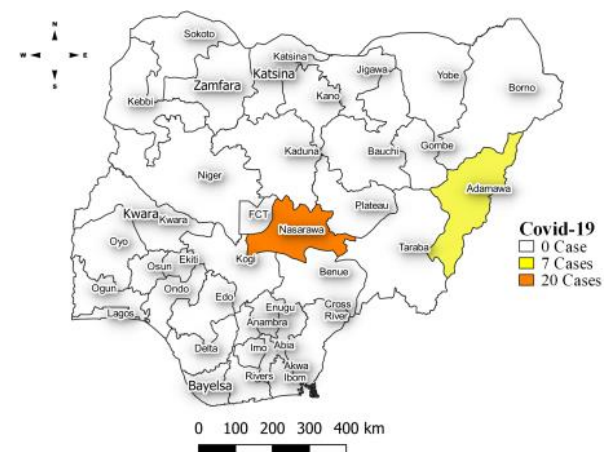


Figure 17: Location of suspected cases of COVID-19 by State, Nigeria, as at week 44, 2024



Key points

- There were 27 suspected cases of Covid 19 reported from two LGAs in two states. There was no laboratory confirmed case and no death was recorded.

Actions

To date

- Follow up with the Lab Data team to ensure Data entry on SORMAS
- Harmonization meeting of Covid-19 and National influenza Sentinel Sites
- Enhanced surveillance activity to encourage test rates
- Coordinate training sessions for surveillance officers on proper data entry protocols for SORMAS.
- Implement regular site visits to verify data quality and compliance with harmonization protocols.

Diphtheria

Week 44

Suspected cases	Confirmed cases	Deaths	Number of States and LGAs affected
38	8	2	State: 3 LGA: 8

Year to date (week 1 – 44)

Suspected cases		Confirmed cases		Deaths		CFR	
2023	2024	2023	2024	2023	2024	2023	2024
18666	16710	10927	10317	719	466	3.9%	2.8%

Figure 18: Number of suspected and confirmed cases of Diphtheria, Nigeria, weeks 1 – 44, 2024

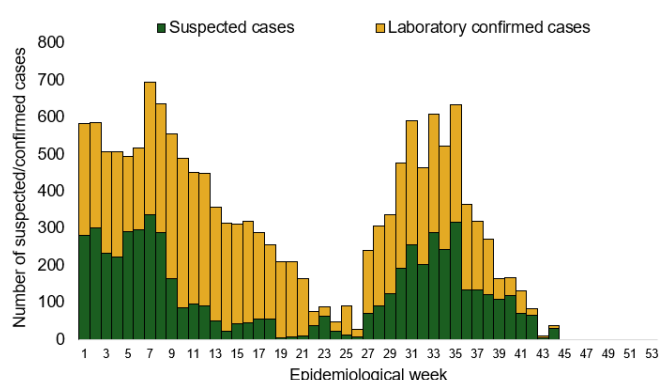
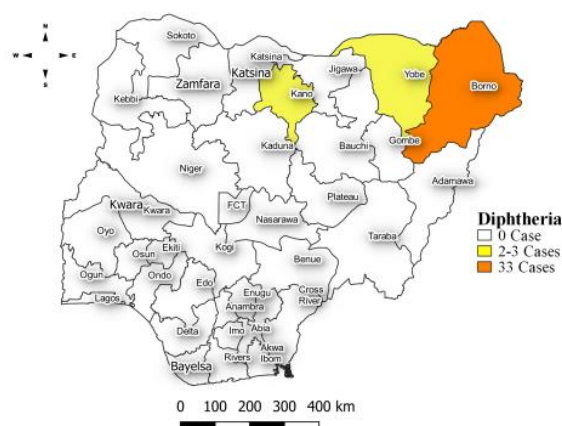


Figure 19: Location of suspected cases of Diphtheria by State, Nigeria, week 44, 2024



Key points

- There were 38 suspected cases of Diphtheria reported from eight LGAs in three states. There were eight confirmed cases and two deaths were recorded.

Actions

To date

- National Diphtheria Technical Working Group (TWG) is monitoring activities in all states.
- Developed Diphtheria surveillance and outbreak response guidelines
- Established Diphtheria laboratory testing network across state
- Conducted case management and IPC training for healthcare workers involved in Diphtheria case management
- Supported NPHCDA in the Implemented reactive mass vaccinations campaign in affected states across states

Event Based Surveillance (EBS)

Week 44

Key points

For the reporting week 44

- 69 Calls were successfully routed to agents and answered
- 0 calls not routed to agents (Failed call)
- 69 total number of calls (successful and failed)
- 0 number of SMS received
- 0 WhatsApp/live chat messages received
- The percentage of failed to total inbound calls 0%
- 1 signal picked and escalated at Cross River State
 - A confirmed death case of Lassa Fever at Ediba, Abi LGA Cross River State

For week 1 – 44

- 5,846 calls were successfully routed to agents and answered
- 210 calls not routed to agents (Failed call)
- 6,056 total inbound calls recorded
- The Percentage of failed to total inbound calls: 3.5%
- 76 Signals were picked and escalated

Categories of Calls

- General inquiries
- Hoax call and others
- Enquiries on COVID-19 vaccination certificate
- Report of health conditions
- Inquiry on Cholera
- Inquiry on malaria vaccine
- Health Declaration form-related queries
- Inquiries on Diphtheria symptoms, treatment, and Vaccine
- Inquiries on yellow fever vaccine
- Inquiries on Lassa fever
- Inquiries on Mpox 15
- Inquiries on employment 8

Figure 20: Number of successful and failed calls, weeks 1 – 44, 2024

