



NIGERIA CENTRE FOR DISEASE
CONTROL AND PREVENTION

Nigeria Centre for Disease Control and Prevention

Protecting the health of Nigerians

Weekly Epidemiological Report

Week 42: 14th – 20th October 2024

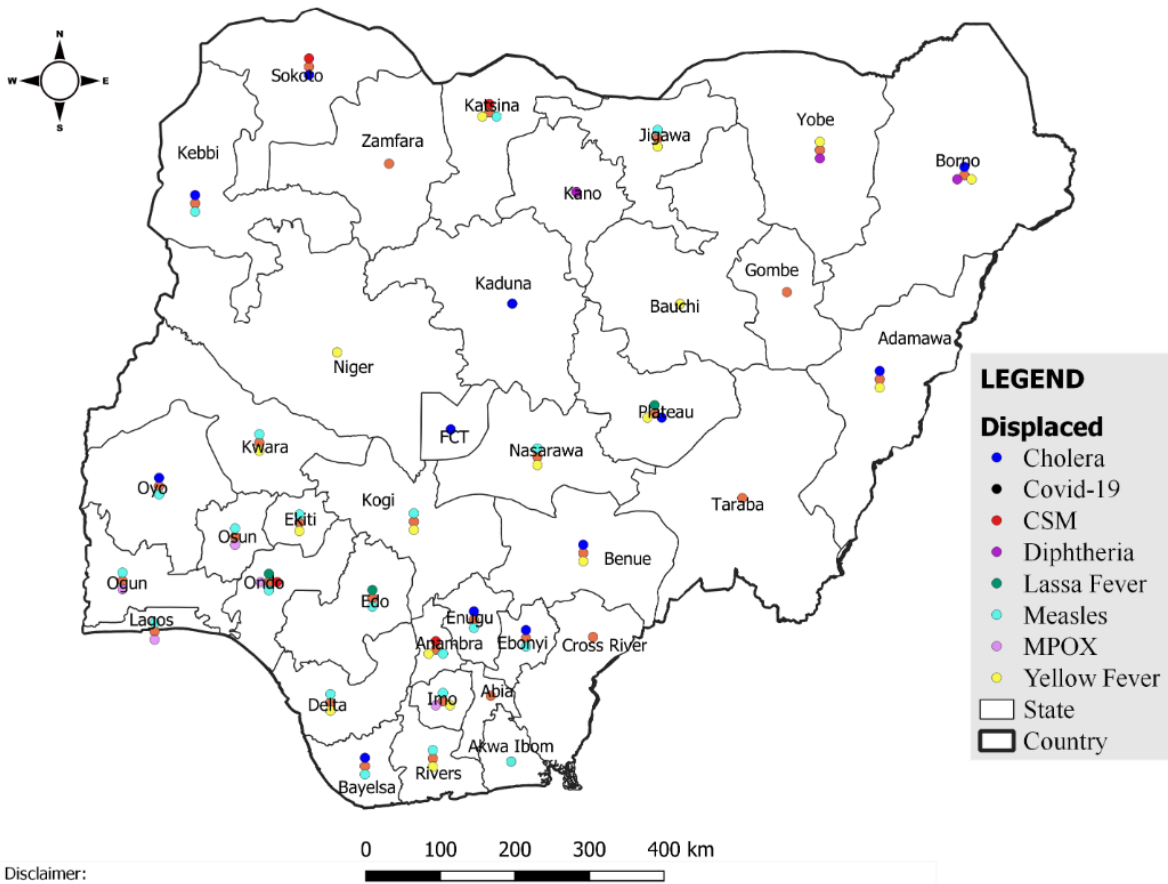
Summary of Incidents

Ongoing incidents

2

Ongoing incidents are defined as confirmed cases where a national EOC or equivalent has been activated (Cholera and Diphtheria)

Other incidents are those with confirmed cases for which EOC is not activated



Summary

Week 42: 14th – 20th October 2024

Lassa Fever ^{1,2}	Cerebrospinal Meningitis (CSM) ^{1,4}	Yellow Fever ^{1,4}
112 Suspected case(s)	9 Suspected case(s)	28 Suspected case(s)
12 Confirmed case(s)	0 Confirmed case(s)	0 Confirmed case(s)
0 Death(s)	0 Death(s)	0 Death(s)
Cholera ^{1,4}	Measles ^{1,4}	Mpox ^{1,4}
852 Suspected case(s)	125 Suspected case(s)	32 Suspected case(s)
18 Confirmed case(s)	15 Confirmed case(s)	3 Confirmed case(s)
35 Death(s)	0 Death(s)	0 Death(s)
Acute Flaccid Paralysis (AFP) ^{1,4}	National Sentinel influenza surveillance ⁵	Coronavirus Disease ^{1,}
79 Suspected case(s)	38 Suspected case(s)	52 Suspected case(s)
0 Confirmed case(s)	3 Confirmed case(s)	0 Confirmed case(s)
0 Death(s)		0 Death(s)
Diphtheria ^{1,4}		
82 Suspected case(s)		
18 Confirmed case(s)		
4 Death(s)		

- Information for this disease was retrieved from the Technical Working Group and Situation Reports
- Case Fatality Rate (CFR) for this disease is reported for confirmed cases only.
- CFR for this disease is reported for total cases i.e. suspected + confirmed.
- Information for sentinel influenza was retrieved from the laboratory.

Lassa Fever

Week 42

Suspected cases	Confirmed cases	Deaths	Number of States and LGAs affected
112	12	0	State: 9 LGA: 19

Year to date (week 1 – 42)

Suspected cases		Confirmed cases		Deaths		CFR	
2023	2024	2023	2024	2023	2024	2023	2024
7842	8681	1104	1047	188	174	17%	16.6%

Figure 1: Number of suspected and confirmed cases of Lassa Fever, Nigeria, Weeks 1 – 42, 2024

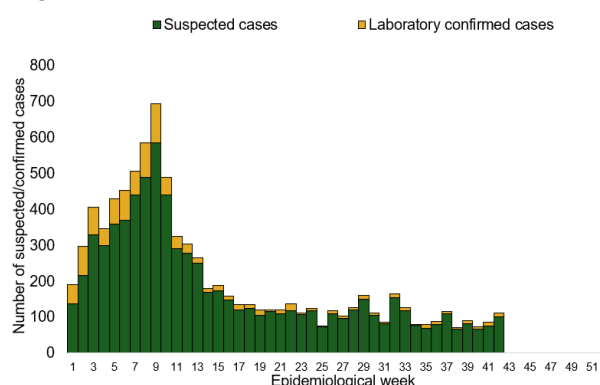
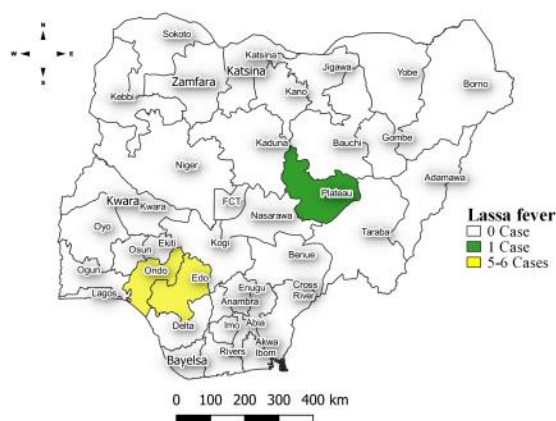


Figure 2: Location of confirmed cases of Lassa Fever by State, Nigeria, week 42, 2024



Key points

- There were 112 suspected cases of Lassa Fever reported from 19 LGAs in nine states. There were 12 laboratory confirmed cases and one death was recorded.

Actions

To date:

- National Lassa fever multi-partner, multi-sectoral Technical Working Group (TWG) continues to coordinate the response activities at all levels.
- Assess all the 36 states and the FCT on the level of readiness to guide the webinar series and future partnerships
- Disseminate the Lassa fever Clinical IDSR Mini course to all stakeholders
- Participated in the Joint Review of National Red Cross Society 2024 Lassa fever DREF Operation
- Participated in the testing phase of the Human Centered Design (HCD) from Farm to Market
- Circulate the final AAR report to stakeholders

Cerebrospinal Meningitis (CSM)

Week 42

Suspected cases	Confirmed cases	Deaths	Number of States and LGAs affected
9	0	0	State: 4 LGA: 4

Year to date (week 1 – 42)

Suspected cases		Confirmed cases		Deaths		CFR	
2023	2024	2023	2024	2023	2024	2023	2024
1972	3047	74	50	75	128	3.8%	4.2%

Figure 3: Number of suspected and confirmed cases of CSM, Nigeria, weeks 1 – 42, 2024

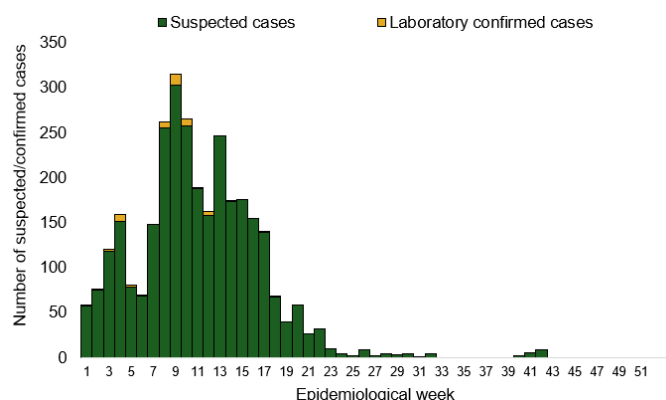
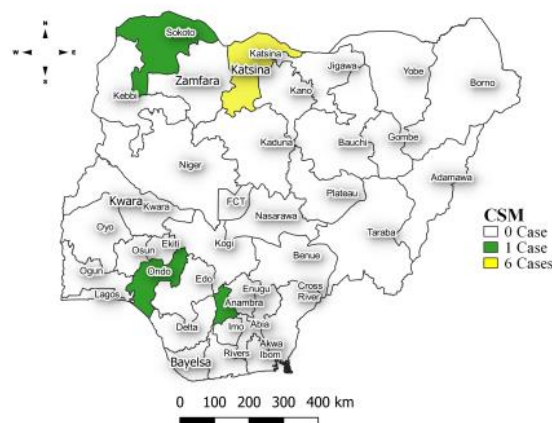


Figure 4: Location of suspected cases of CSM by State, Nigeria, week 42, 2024



Key points

- There were nine suspected cases of Cerebrospinal meningitis (CSM) reported from four LGAs in four states. There was no laboratory confirmed case and no death was recorded.

Actions

To date:

- National CSM TWG meets weekly to review reports from states and plan appropriately.
- Providing offsite/onsite support to states and follow up for daily reporting and progress with response activities
- Implementation of CSM reactive vaccination campaign in high burden LGAs/Wards in Jigawa state led by NPHCDA
- Activated Multi-sectoral State-level Emergency Operation Centres (EOCs) in Jigawa and Yobe, Katsina, Bauchi and Gombe state

Yellow Fever

Week 42

Suspected cases	Confirmed cases	Deaths	Number of States and LGAs affected
28	0	0	State: 17 LGA: 22

Year to date (week 1 – 42)

Suspected cases		Confirmed cases		Deaths		CFR	
2023	2024	2023	2024	2023	2024	2023	2024
2617	2345	21	23	9	2	0.3%	0.1%

Figure 5: Number of suspected and confirmed cases of Yellow Fever, Nigeria, weeks 1 – 42, 2024

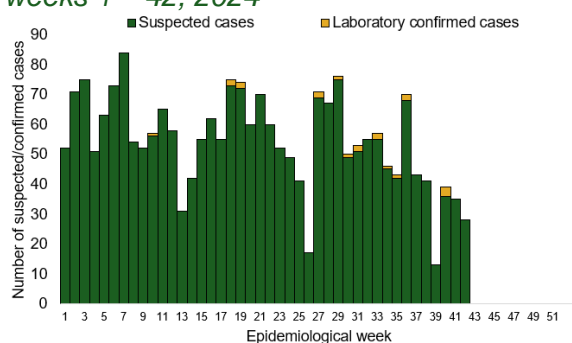
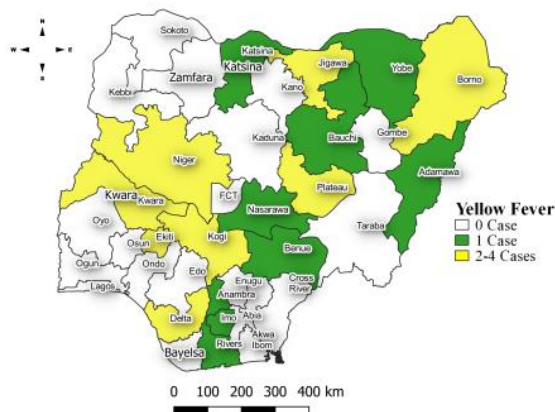


Figure 6: Location of suspected cases of Yellow Fever by States, Nigeria, week 42, 2024



Key points

- There were 28 suspected cases of Yellow Fever (YF) reported from 22 LGAs in 17 states. There was no laboratory confirmed case and no death was recorded.

Actions

To date:

- National YF multi-partner Technical Working Group (TWG) continues to coordinate activities across states.
- Conducted dynamic risk assessment to guide overall preparedness and response strategies.
- Provided off-site support to states to Ondo and Bayelsa states with confirmed cases
- Harmonizing surveillance and laboratory data
- Regular sample testing at the regional reference laboratories
- Coordination of yellow fever sample management and transportation from all states to the regional reference laboratory

Cholera

Week 42

Suspected cases	Confirmed cases	Deaths	Number of States and LGAs affected
852	18	35	State: 11 + FCT LGA: 19

Year to date (week 1 – 42)

Suspected cases		Confirmed cases		Deaths		CFR	
2023	2024	2023	2024	2023	2024	2023	2024
3515	16822	45	368	84	602	2.4%	3.6%

Figure 7: Number of suspected and confirmed cases of Cholera, Nigeria, weeks 1 – 42, 2024

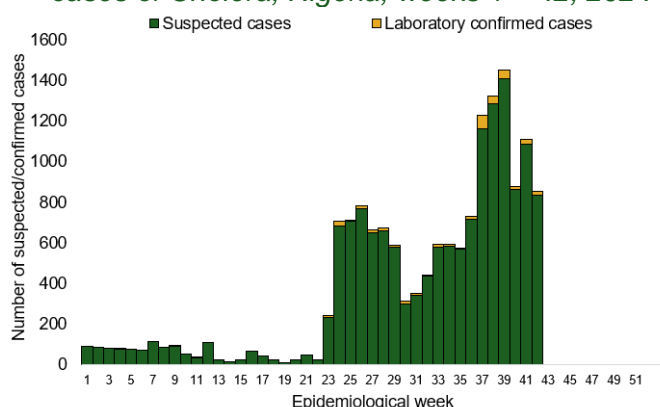
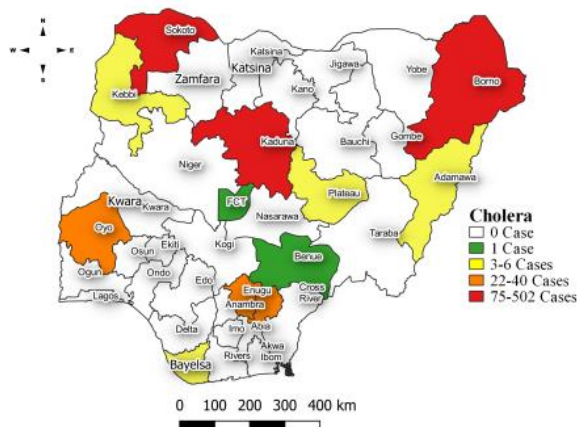


Figure 8: Location of suspected cases of Cholera by State, Nigeria, week 42, 2024



Key points

- There were 852 suspected cases of Cholera reported from 19 LGAs in 11 states and FCT. There were 18 laboratory confirmed cases and 35 deaths were recorded.

Actions

To date

- National Cholera Multi-Sectoral Technical Working Group (TWG) is monitoring all states and supporting affected states.
- Activated the National Emergency Operating Centre (EOC) to monitor responses activities in all affected states
- On-site support in 9 states Lagos, Bayelsa, Abia, Zamfara, Bauchi, Katsina, Cross River, Ebonyi and Rivers
- Develop priority areas for multi-sectoral intervention (Hotspots mapping)

Measles

Week 42

Suspected cases	Confirmed cases	Deaths	Number of States and LGAs affected
125	15	0	State: 21 LGA: 83

Year to date (week 1 – 42)

Suspected cases		Confirmed cases		Deaths		CFR	
2023	2024	2023	2024	2023	2024	2023	2024
18298	18394	1774	2030	113	118	0.6%	0.6%

Figure 9: Number of suspected and confirmed cases of Measles, Nigeria, weeks 1 – 42, 2024.

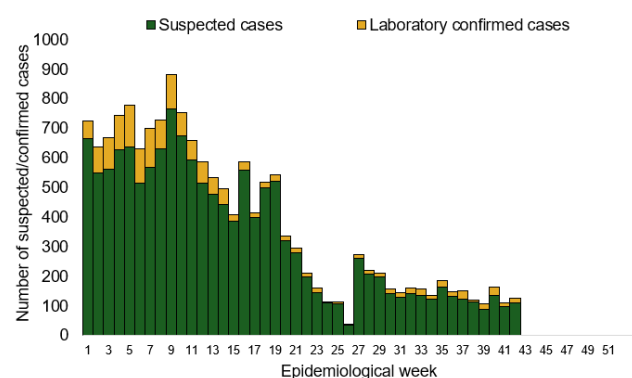
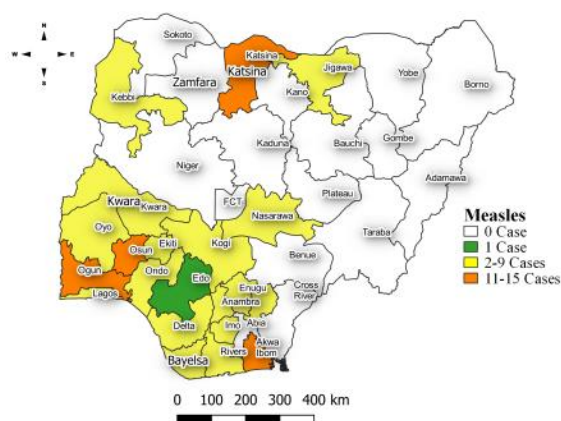


Figure 10: Location of suspected cases of Measles by State, Nigeria, week 42, 2024



Key points

- There were 125 suspected cases of Measles reported from 83 LGAs in 21 states. There were 15 laboratory confirmed cases and no death was recorded.

Actions

To date

- National Measles TWG is closely monitoring measles surveillance data and providing feedback to relevant agencies and development partners.
- Supported NPHCDA in the pre-implementation and implementation of 2024 Integrated Supplementary Immunization Activities (SIA)
- Distribution of Measles and Rubella Surveillance Guidelines:
- Supported the validation of the National Measles Elimination Strategic Plan (2019–2028) workshop
- Validated the Measles Outbreak Preparedness and Response (MOBR) Training Materials to standardize training content and materials for outbreak preparedness

Mpox

Week 42

Suspected cases	Confirmed cases	Deaths	Number of States and LGAs affected
32	3	0	State: 5 LGA: 14

Year to date (week 1 – 42)

Suspected cases		Confirmed cases		Deaths		CFR	
2023	2024	2023	2024	2023	2024	2023	2024
928	1124	80	80	2	0	0.2%	0%

Figure 11: Number of suspected and confirmed cases of Mpox, Nigeria, weeks 1 – 42, 2024.

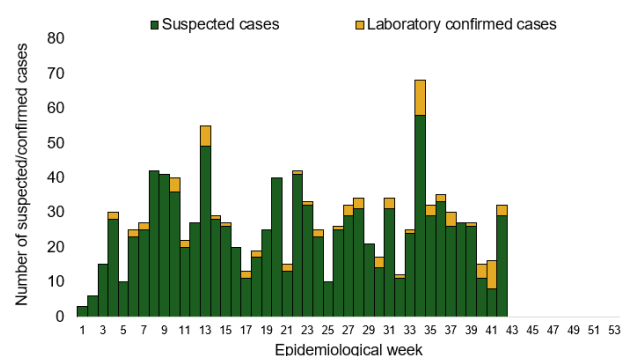
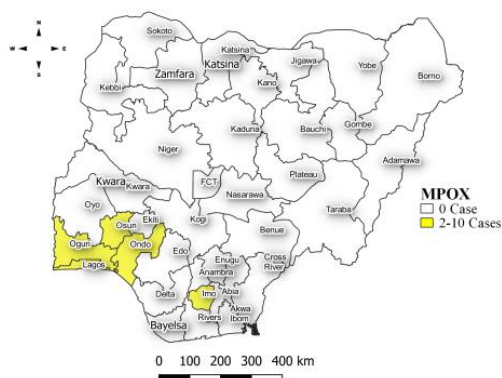


Figure 12: Location of suspected cases of Mpox by State, Nigeria, week 42, 2024



Key points

- There were 32 suspected cases of Mpox reported from 14 LGAs in five states. There were three laboratory confirmed cases and no death was recorded.

Actions

To date

- Mpox Incident Management System activated to coordinate response activities
- Supported training of state Epidemiologist and DSNO with surveillance support staff
- Optimisation of 6 laboratories for Mpox testing and supported remote capacity building of laboratory staff at the Molecular Laboratories
- Conducted capacity building of health educators on Mpox RCCE and Content development for RCCE materials
- Supported the coordination of mpox research (UKPHRST/ NCDC study on Mpox collaborative study)

Acute Flaccid Paralysis (AFP)

Week 42

Suspected cases	Confirmed cases	Deaths	Number of States and LGAs affected
79	0	0	State: 37 LGA: 59

Year to date (week 1 – 42)

Suspected cases		Confirmed cases		Deaths		CFR	
2023	2024	2023	2024	2023	2024	2023	2024
5519	5151	0	0	0	0	0%	0%

Figure 13: Number of suspected and confirmed cases of AFP, Nigeria, weeks 1 – 42, 2023

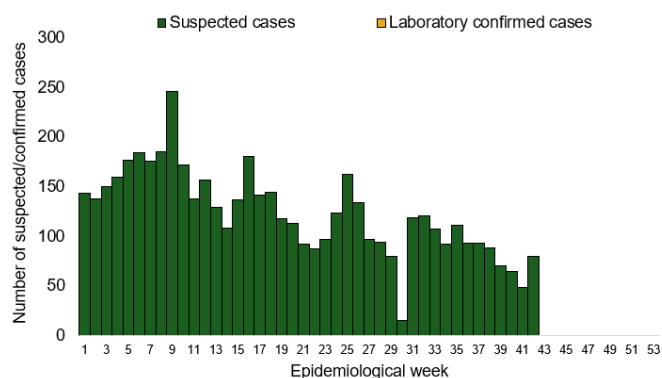
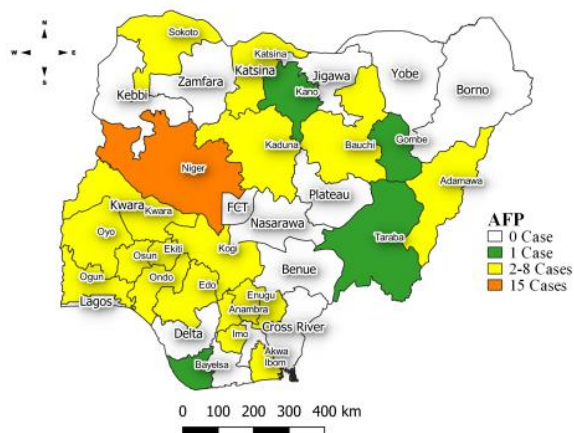


Figure 14: Location of suspected cases of AFP by State, Nigeria, week 42, 2024



Key points

- There were 79 suspected cases of AFP reported from 59 LGAs in 37 states. There was no laboratory confirmed case and no death was recorded.

National Influenza Sentinel Surveillance

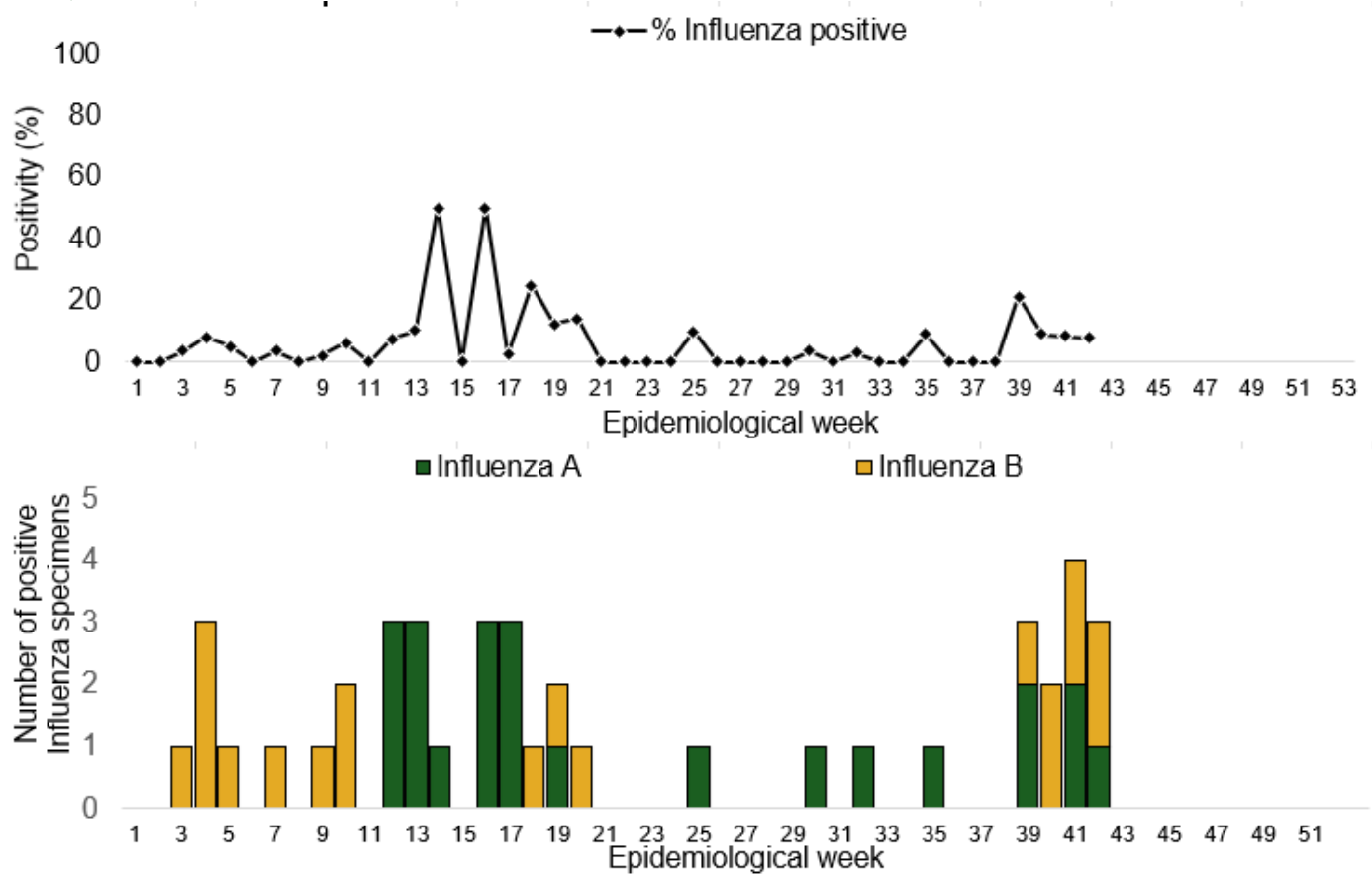
Week 42

Suspected Cases	Confirmed Cases	Confirmed Case by type	
		Influenza A	Influenza B
38	3	1	2

Year to date (week 1 – 42)

Suspected cases	Total Confirmed Cases	Confirmed cases by type	
729	42	Influenza A	Influenza B
		23	19

Figure 15: Number of influenza positive specimens by type and percentage positive by epidemiological week, 2023.



Coronavirus Disease (COVID-19)

Week 42

Suspected cases	Confirmed cases	Deaths	Number of States and LGAs affected
52	0	0	State: 3 LGA: 4

Year to date (Week 1- 42)

Suspected cases		Confirmed cases		Deaths		CFR	
2023	2024	2023	2024	2023	2024	2023	2024
64675	1809	6661	804	181	1	0.3%	0.1%

Figure 16: Epidemic curve of confirmed cases of COVID-19, Nigeria, week 1 - 42, 2024

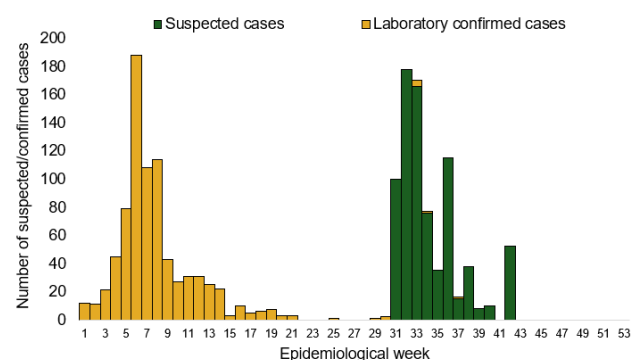
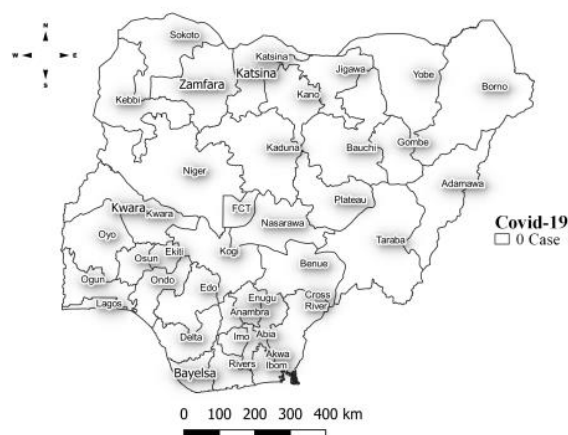


Figure 17: Location of **confirmed** cases of COVID-19 by State, Nigeria, as at week 42, 2024



Key points

- There were 52 suspected cases of COVID-19 reported from four LGA in three states. There was no laboratory confirmed case and no death was recorded.

Actions

To date

- Follow up with the Lab Data team to ensure Data entry on SORMAS
- Harmonization meeting of Covid-19 and National influenza Sentinel Sites
- Enhanced surveillance activity to encourage test rates
- Coordinate training sessions for surveillance officers on proper data entry protocols for SORMAS.
- Implement regular site visits to verify data quality and compliance with harmonization protocols.

Diphtheria

Week 42

Suspected cases	Confirmed cases	Deaths	Number of States and LGAs affected
82	18	4	State: 3 LGA: 11

Year to date (week 1 – 42)

Suspected cases		Confirmed cases		Deaths		CFR	
2023	2024	2023	2024	2023	2024	2023	2024
17063	16625	10037	10296	680	460	4%	2.8%

Figure 18: Number of suspected and confirmed cases of Diphtheria, Nigeria, weeks 1 – 42, 2024

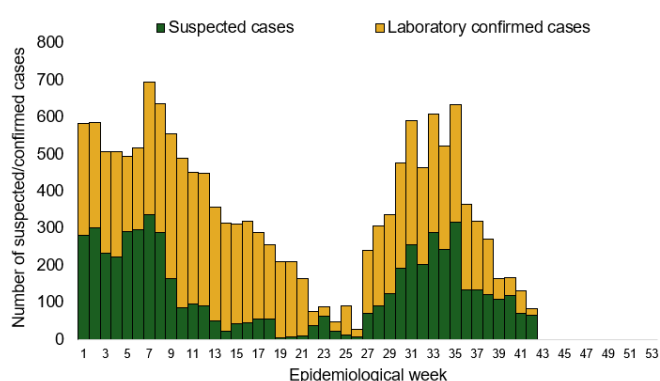
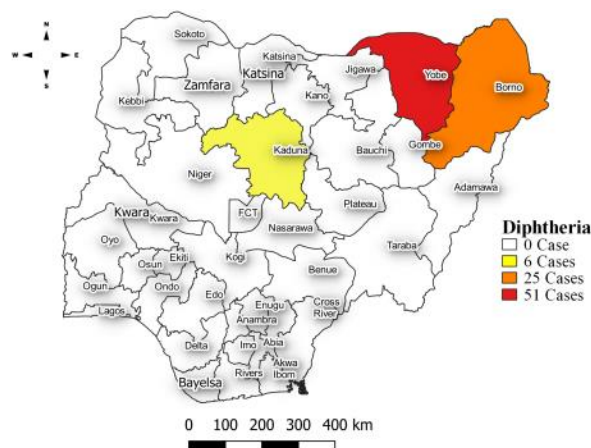


Figure 19: Location of suspected cases of Diphtheria by State, Nigeria, week 42, 2024



Key points

- There were 82 suspected cases of Diphtheria reported from 11 LGAs in three states. There were 18 confirmed cases and four deaths were recorded.

Actions

To date

- National Diphtheria Technical Working Group (TWG) is monitoring activities in all states.
- Developed Diphtheria surveillance and outbreak response guidelines
- Established Diphtheria laboratory testing network across state
- Conducted case management and IPC training for healthcare workers involved in Diphtheria case management
- Supported NPHCDA in the Implemented reactive mass vaccinations campaign in affected states across states

Event Based Surveillance (EBS)

Week 42

Key points

For the reporting week 42

- 101 Calls were successfully routed to agents and answered
- 0 calls not routed to agents (Failed call)
- 101 total number of calls (successful and failed)
- 0 number of SMS received
- 0 WhatsApp/live chat messages received
- The percentage of failed to total inbound calls 0%
- 1 signal picked and escalated to Cross River State
 - A suspected case of Mpox at Calabar Municipal of Cross River State

For week 1 – 42

- 5,602 calls were successfully routed to agents and answered
- 0 calls not routed to agents (Failed call)
- 5,812 total inbound calls recorded
- The Percentage of failed to total inbound calls: 3.6%
- 76 Signals were picked and escalated

Categories of Calls

- General inquiries 51
- Hoax call and others 20
- Report of health conditions 5
- Inquiry on Cholera 10
- Inquiries on Mpox 15

=

Figure 20: Number of successful and failed calls, weeks 1 – 42, 2024

