



NIGERIA CENTRE FOR DISEASE  
CONTROL AND PREVENTION

**Nigeria Centre for Disease Control and Prevention**

*Protecting the health of Nigerians*

# Weekly Epidemiological Report

Week 41: 7<sup>th</sup> – 13<sup>th</sup> October 2024

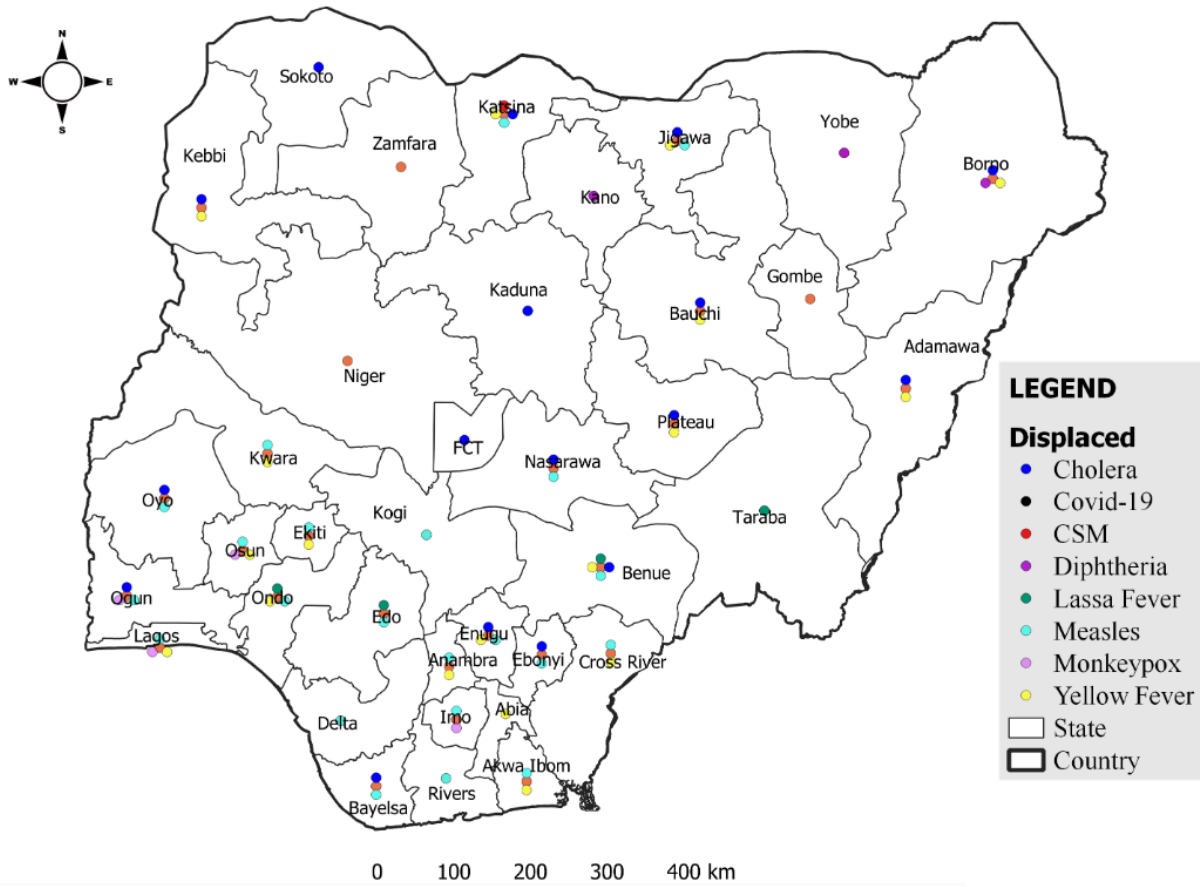
## Summary of Incidents

### Ongoing incidents

2

Ongoing incidents are defined as confirmed cases where a national EOC or equivalent has been activated (Cholera and Diphtheria)

Other incidents are those with confirmed cases for which EOC is not activated



Disclaimer:

## Summary

Week 41: 7<sup>th</sup> – 13<sup>th</sup> October 2024

Lassa Fever <sup>1,2</sup>	Cerebrospinal Meningitis (CSM) <sup>1,4</sup>	Yellow Fever <sup>1,4</sup>
85 Suspected case(s)	6 Suspected case(s)	35 Suspected case(s)
10 Confirmed case(s)	0 Confirmed case(s)	0 Confirmed case(s)
0 Death(s)	0 Death(s)	0 Death(s)
Cholera <sup>1,4</sup>	Measles <sup>1,4</sup>	Mpox <sup>1,4</sup>
1108 Suspected case(s)	111 Suspected case(s)	16 Suspected case(s)
21 Confirmed case(s)	13 Confirmed case(s)	8 Confirmed case(s)
20 Death(s)	0 Death(s)	0 Death(s)
Acute Flaccid Paralysis (AFP) <sup>1,4</sup>	National Sentinel influenza surveillance <sup>5</sup>	Coronavirus Disease <sup>1,</sup>
48 Suspected case(s)	47 Suspected case(s)	0 Suspected case(s)
0 Confirmed case(s)	4 Confirmed case(s)	0 Confirmed case(s)
0 Death(s)		0 Death(s)
Diphtheria <sup>1,4</sup>		
131 Suspected case(s)		
61 Confirmed case(s)		
9 Death(s)		

1. Information for this disease was retrieved from the Technical Working Group and Situation Reports
2. Case Fatality Rate (CFR) for this disease is reported for confirmed cases only.
3. CFR for this disease is reported for total cases i.e. suspected + confirmed.
4. Information for sentinel influenza was retrieved from the laboratory.

## Lassa Fever

### Week 41

Suspected cases	Confirmed cases	Deaths	Number of States and LGAs affected
85	10	0	State: 16 + FCT LGA: 26

### Year to date (week 1 – 41)

Suspected cases		Confirmed cases		Deaths		CFR	
2023	2024	2023	2024	2023	2024	2023	2024
7727	8569	1095	1035	188	174	17.2%	16.8%

Figure 1: Number of suspected and confirmed cases of Lassa Fever, Nigeria, Weeks 1 – 41, 2024

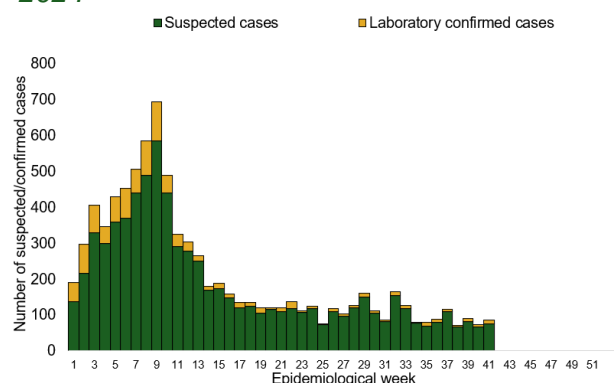
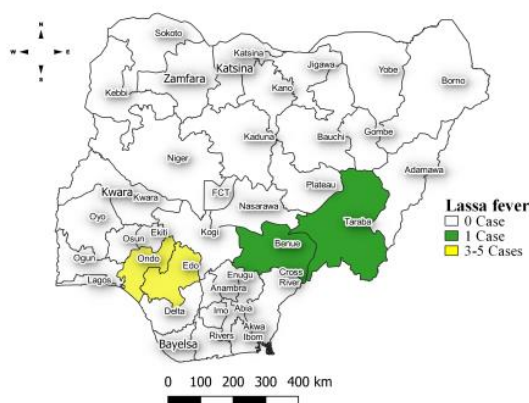


Figure 2: Location of confirmed cases of Lassa Fever by State, Nigeria, week 41, 2024



## Key points

- There were 85 suspected cases of Lassa Fever reported from 26 LGAs in 16 states and FCT. There were 10 laboratory confirmed cases and no death was recorded.

## Actions

### To date:

- National Lassa fever multi-partner, multi-sectoral Technical Working Group (TWG) continues to coordinate the response activities at all levels.

### Planned:

- National Lassa fever multi-partner, multi-sectoral Technical Working Group (TWG) continues to coordinate the response activities at all levels.
- Participated in the Joint Review of National Red Cross Society 2024 Lassa fever DREF Operation
- Participated in the testing phase of the Human Centered Design (HCD) from Farm to Market
- Circulate the final AAR report to stakeholders

## Cerebrospinal Meningitis (CSM)

### Week 41

Suspected cases	Confirmed cases	Deaths	Number of States and LGAs affected
6	0	0	State: 1 LGA: 1

### Year to date (week 1 – 41)

Suspected cases		Confirmed cases		Deaths		CFR	
2023	2024	2023	2024	2023	2024	2023	2024
1968	3037	74	50	75	128	3.8%	4.2%

Figure 3: Number of suspected and confirmed cases of CSM, Nigeria, weeks 1 – 41, 2024

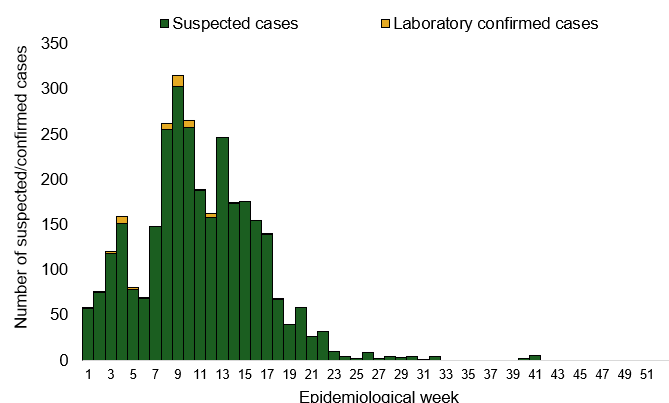
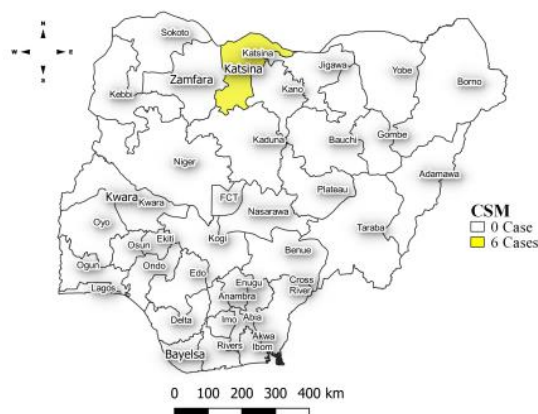


Figure 4: Location of suspected cases of CSM by State, Nigeria, week 41, 2024



## Key points

- There were six suspected cases of Cerebrospinal meningitis (CSM) reported from one LGA in Katsina state. There was no laboratory confirmed case and no death was recorded.

## Actions

### To date:

- National CSM TWG meets weekly to review reports from states and plan appropriately.
- Providing offsite/onsite support to states and follow up for daily reporting and progress with response activities
- Implementation of CSM reactive vaccination campaign in high burden LGAs/Wards in Jigawa state led by NPHCDA
- Activated Multi-sectoral State-level Emergency Operation Centres (EOCs) in Jigawa and Yobe, Katsina, Bauchi and Gombe state

## Yellow Fever

### Week 41

Suspected cases	Confirmed cases	Deaths	Number of States and LGAs affected
35	0	0	State: 19 LGA: 33

### Year to date (week 1 – 41)

Suspected cases		Confirmed cases		Deaths		CFR	
2023	2024	2023	2024	2023	2024	2023	2024
2543	2326	21	23	9	2	0.4%	0.1%

Figure 5: Number of suspected and confirmed cases of Yellow Fever, Nigeria, weeks 1 – 41, 2024

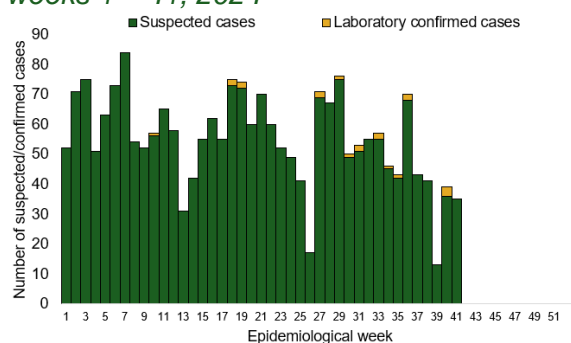
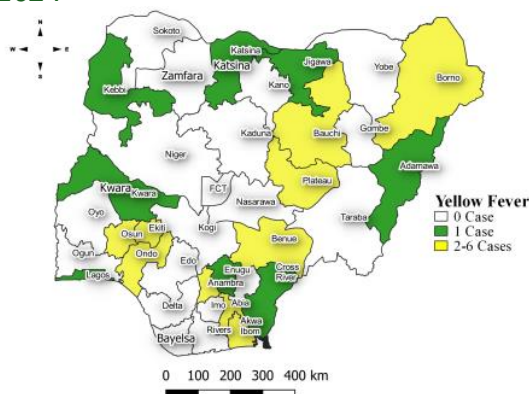


Figure 6: Location of suspected cases of Yellow Fever by States, Nigeria, week 41, 2024



### Key points

- There were 35 suspected cases of Yellow Fever (YF) reported from 33 LGAs in 19 states. There was no laboratory confirmed case and no death was recorded.

### Actions

#### To date:

- National YF multi-partner Technical Working Group (TWG) continues to coordinate activities across states.
- Conducted dynamic risk assessment to guide overall preparedness and response strategies.
- Provided off-site support to states to Ondo and Bayelsa states with confirmed cases
- Harmonizing surveillance and laboratory data
- Regular sample testing at the regional reference laboratories
- Coordination of yellow fever sample management and transportation from all states to the regional reference laboratory

## Cholera

### Week 41

Suspected cases	Confirmed cases	Deaths	Number of States and LGAs affected
1108	21	20	State: 15 + FCT LGA: 29

### Year to date (week 1 – 41)

Suspected cases		Confirmed cases		Deaths		CFR	
2023	2024	2023	2024	2023	2024	2023	2024
3491	15970	45	350	84	567	2.4%	3.6%

Figure 7: Number of suspected and confirmed cases of Cholera, Nigeria, weeks 1 – 41, 2024

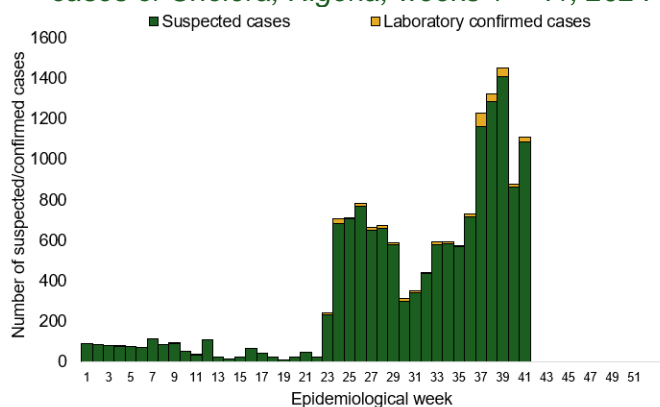
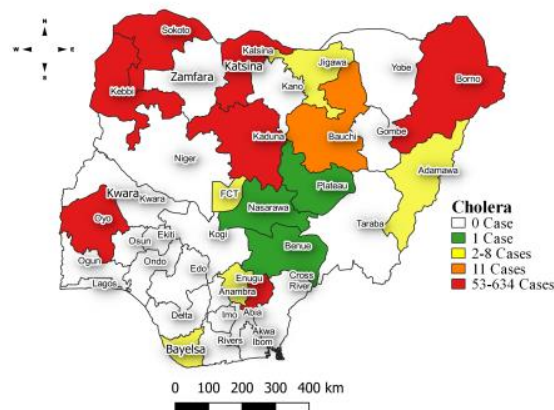


Figure 8: Location of suspected cases of Cholera by State, Nigeria, week 41, 2024



## Key points

- There were 1108 suspected cases of Cholera reported from 29 LGAs in 15 states and FCT. There were 21 laboratory confirmed cases and 20 deaths were recorded.

## Actions

### To date

- National Cholera Multi-Sectoral Technical Working Group (TWG) is monitoring all states and supporting affected states.
- Activated the National Emergency Operating Centre (EOC) to monitor responses activities in all affected states
- On-site support in 9 states Lagos, Bayelsa, Abia, Zamfara, Bauchi, Katsina, Cross River, Ebonyi and Rivers
- Develop priority areas for multi-sectoral intervention (Hotspots mapping)

## Measles

### Week 41

Suspected cases	Confirmed cases	Deaths	Number of States and LGAs affected
111	13	0	State: 22 LGA: 68

### Year to date (week 1 – 41)

Suspected cases		Confirmed cases		Deaths		CFR	
2023	2024	2023	2024	2023	2024	2023	2024
18083	18269	1712	2015	113	118	0.6%	0.6%

Figure 9: Number of suspected and confirmed cases of Measles, Nigeria, weeks 1 – 41, 2024.

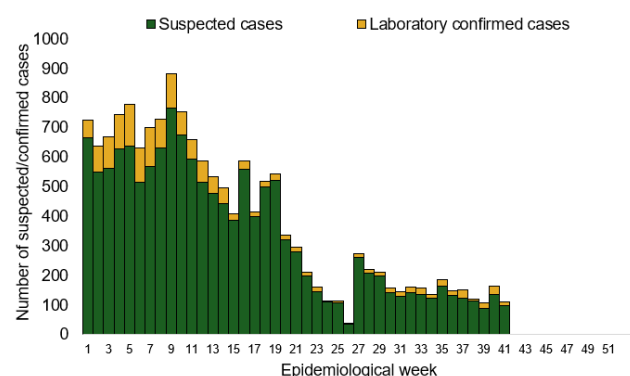
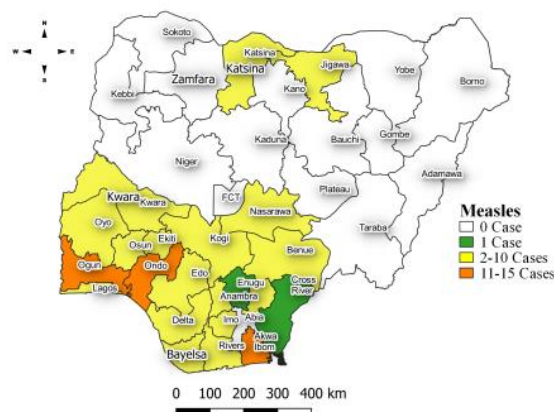


Figure 10: Location of suspected cases of Measles by State, Nigeria, week 41, 2024



### Key points

- There were 111 suspected cases of Measles reported from 68 LGAs in 22 states. There were 13 laboratory confirmed cases and no death was recorded.

### Actions

#### To date

- National Measles TWG is closely monitoring measles surveillance data and providing feedback to relevant agencies and development partners.
- Supported NPHCDA in the pre-implementation and implementation of 2024 Integrated Supplementary Immunization Activities (SIA)
- Distribution of Measles and Rubella Surveillance Guidelines:
- Supported the validation of the National Measles Elimination Strategic Plan (2019–2028) workshop
- Validated the Measles Outbreak Preparedness and Response (MOBR) Training Materials to standardize training content and materials for outbreak preparedness



Mpox

Week 41

Suspected cases	Confirmed cases	Deaths	Number of States and LGAs affected
16	8	0	State: 4 LGA: 11

Year to date (week 1 – 41)

Suspected cases		Confirmed cases		Deaths		CFR	
2023	2024	2023	2024	2023	2024	2023	2024
928	1092	80	77	2	0	0.2%	0%

Figure 11: Number of suspected and confirmed cases of Mpox, Nigeria, weeks 1 – 41, 2024.

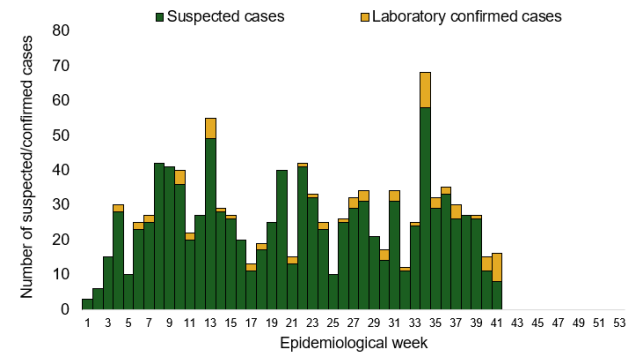
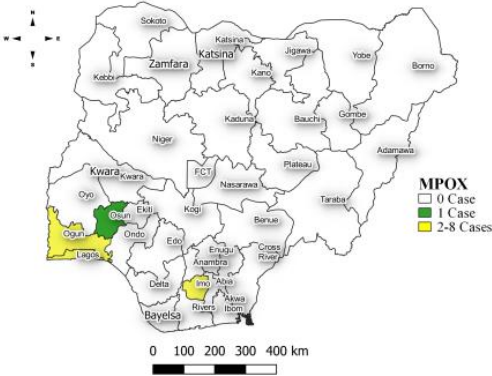


Figure 12: Location of suspected cases of Mpox by State, Nigeria, week 41, 2024



Key points

- There were 16 suspected cases of Mpox reported from 11 LGAs in four states. There were eight laboratory confirmed cases and no death was recorded.

Actions  
To date

- Mpox Incident Management System activated to coordinate response activities
- Supported training of state Epidemiologist and DSNO with surveillance support staff
- Optimisation of 6 laboratories for Mpox testing and supported remote capacity building of laboratory staff at the Molecular Laboratories
- Conducted capacity building of health educators on Mpox RCCE and Content development for RCCE materials
- Supported the coordination of mpox research (UKPHRST/ NCDC study on Mpox collaborative study)

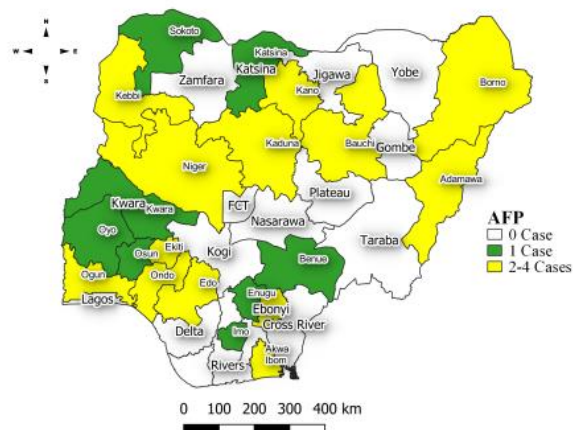
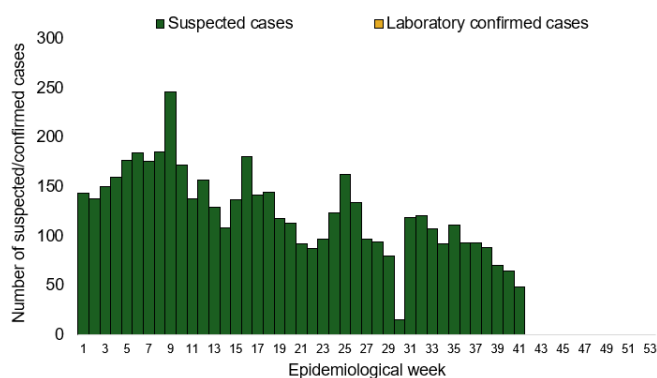


## Week 41

Suspected cases	Confirmed cases	Deaths	Number of States and LGAs affected
48	0	0	State: 22 LGA: 45

Suspected cases		Confirmed cases		Deaths		CFR	
2023	2024	2023	2024	2023	2024	2023	2024
5374	5072	0	0	0	0	0%	0%

Figure 14: Location of suspected cases of AFP by State, Nigeria, week 41, 2024



- There were 48 suspected cases of AFP reported from 45 LGAs in 22 states. There was no laboratory confirmed case and no death was recorded.

National Influenza Sentinel Surveillance

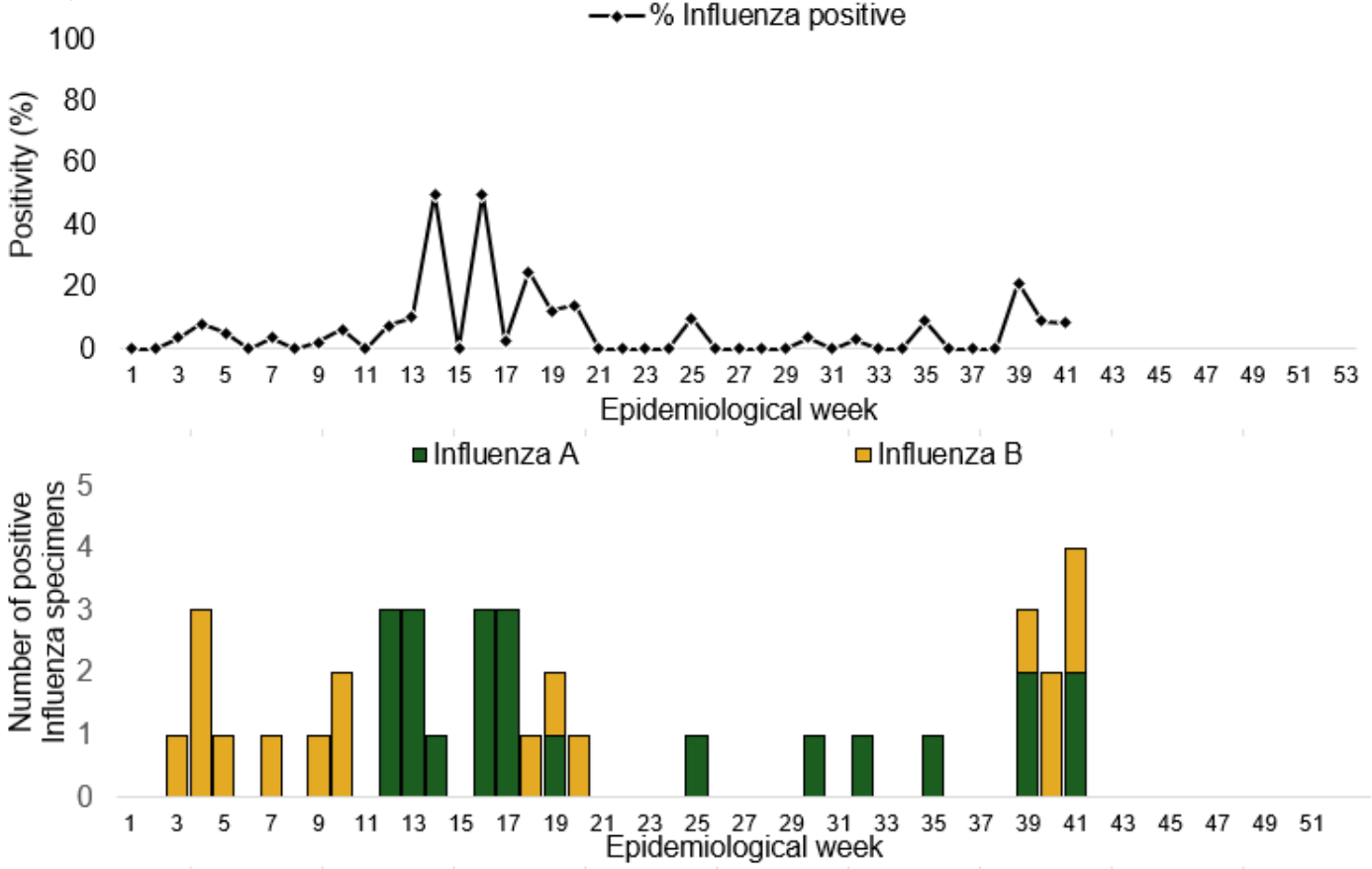
Week 41

Suspected Cases	Confirmed Cases	Confirmed Case by type	
		Influenza A	Influenza B
47	4	2	2

Year to date (week 1 – 41)

Suspected cases	Total Confirmed Cases	Confirmed cases by type	
691	39	Influenza A	Influenza B
		22	17

Figure 15: Number of influenza positive specimens by type and percentage positive by epidemiological week, 2023.



## Coronavirus Disease (COVID-19)

### Week 41

Suspected cases	Confirmed cases	Deaths	Number of States and LGAs affected
0	0	0	State: 0 LGA: 0

### Year to date (Week 1- 41)

Suspected cases		Confirmed cases		Deaths		CFR	
2023	2024	2023	2024	2023	2024	2023	2024
64675	1757	6661	804	181	1	0.3%	0.1%

Figure 16: Epidemic curve of confirmed cases of COVID-19, Nigeria, week 1 - 41, 2024

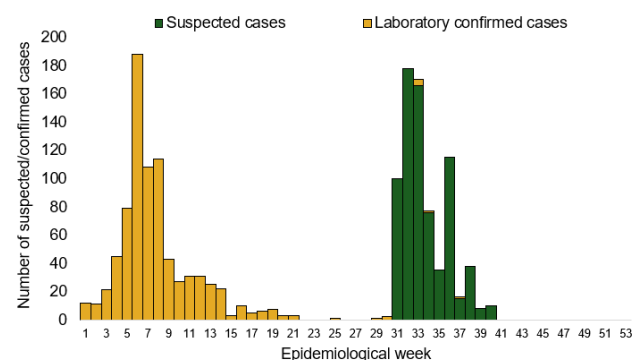
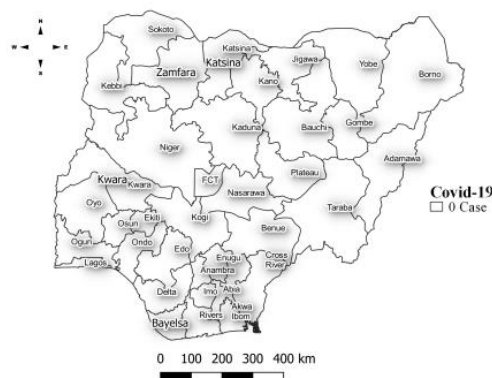


Figure 17: Location of **confirmed** cases of COVID-19 by State, Nigeria, as at week 41, 2024



### Key points

- Follow up with the Lab Data team to ensure Data entry on SORMAS
- Harmonization meeting of Covid-19 and National influenza Sentinel Sites
- Enhanced surveillance activity to encourage test rates
- Coordinate training sessions for surveillance officers on proper data entry protocols for SORMAS.
- Implement regular site visits to verify data quality and compliance with harmonization protocols.

## Diphtheria

### Week 41

Suspected cases	Confirmed cases	Deaths	Number of States and LGAs affected
131	61	9	State: 3 LGA: 19

### Year to date (week 1 – 41)

Suspected cases		Confirmed cases		Deaths		CFR	
2023	2024	2023	2024	2023	2024	2023	2024
16003	16543	9477	10278	664	456	4.1%	2.8%

Figure 18: Number of suspected and confirmed cases of Diphtheria, Nigeria, weeks 1 – 41, 2024

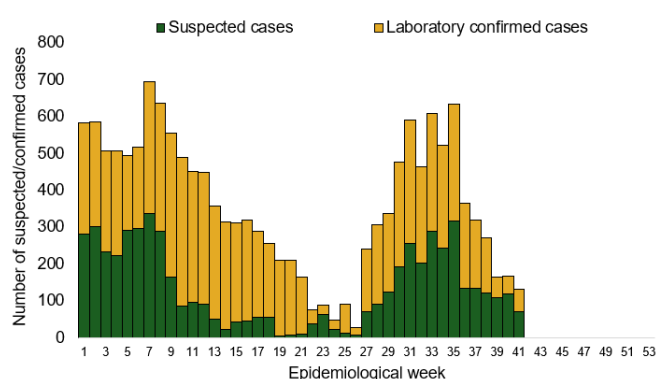
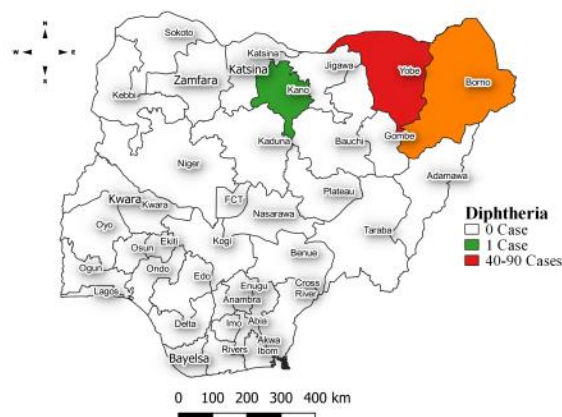


Figure 19: Location of suspected cases of Diphtheria by State, Nigeria, week 41, 2024



### Key points

- There were 131 suspected cases of Diphtheria reported from 19 LGAs in three states. There were 61 confirmed cases and nine deaths were recorded.

### Actions

#### To date

- National Diphtheria Technical Working Group (TWG) is monitoring activities in all states.
- Developed Diphtheria surveillance and outbreak response guidelines
- Established Diphtheria laboratory testing network across state
- Conducted case management and IPC training for healthcare workers involved in Diphtheria case management
- Supported NPHCDA in the Implemented reactive mass vaccinations campaign in affected states across states

## Event Based Surveillance (EBS)

### Week 41

#### Key points

##### For the reporting week 41

- 91 Calls were successfully routed to agents and answered
- 4 calls not routed to agents (Failed call)
- 95 total number of calls (successful and failed)
- 0 number of SMS received
- 0 WhatsApp/live chat messages received
- The percentage of failed to total inbound calls 4.2%
- 2 signals picked and escalated to the respective States
  - 1 One person has been confirmed dead as Oyo State Government confirmed 23 cholera cases.
  - Cholera kills 7 in Kano

##### For week 1 – 41

- 4,883 calls were successfully routed to agents and answered
- 210 calls not routed to agents (Failed call)
- 5,096 total inbound calls recorded
- The Percentage of failed to total inbound calls: 4.1%
- 75 Signals were picked and escalated

#### Categories of Calls

- General inquiries 49
- Hoax call and others 12
- Report of health conditions 4
- Inquiry on Cholera 15

Figure 20: Number of successful and failed calls, weeks 1 – 41, 2024

