



NIGERIA CENTRE FOR DISEASE
CONTROL AND PREVENTION

Nigeria Centre for Disease Control and Prevention

Protecting the health of Nigerians

Weekly Epidemiological Report

Week 47: 18th – 24th November 2024

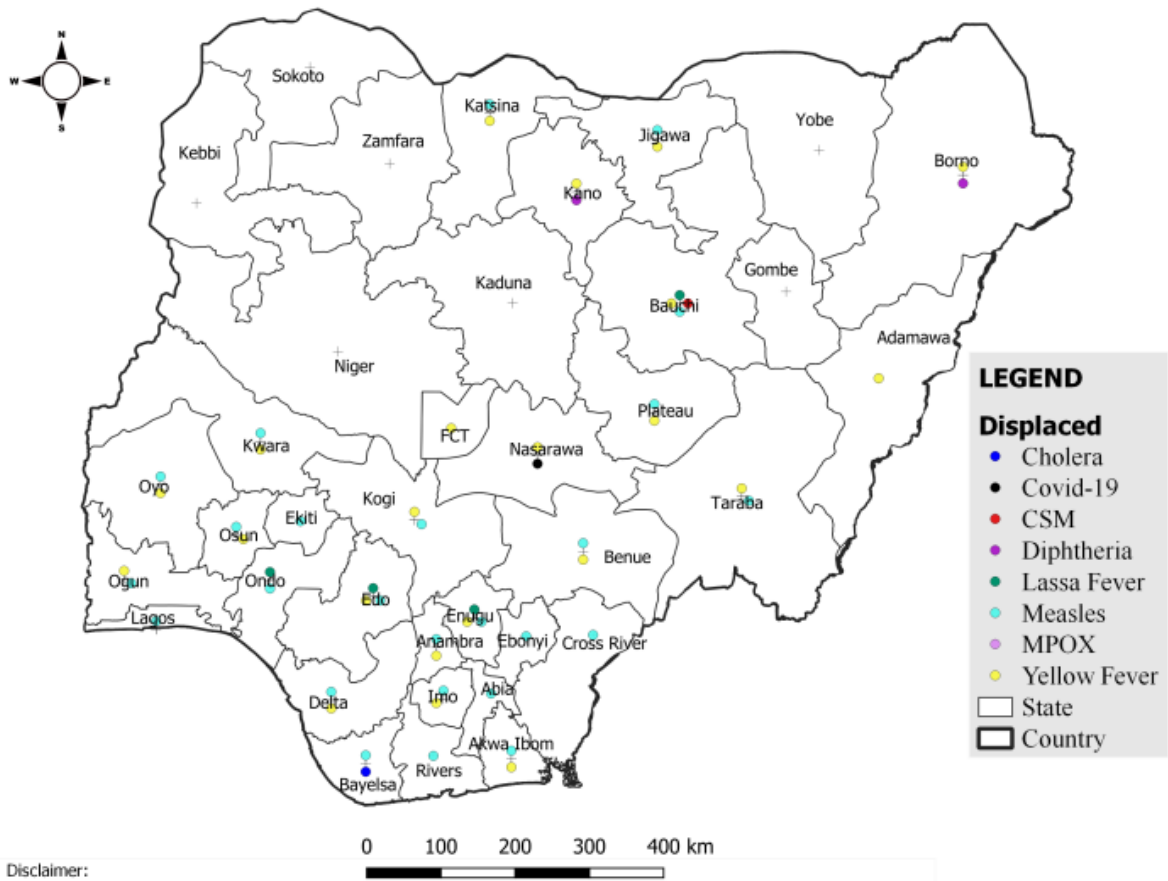
Summary of Incidents

Ongoing incidents

2

Ongoing incidents are defined as confirmed cases where a national EOC or equivalent has been activated (Cholera and Diphtheria)

Other incidents are those with confirmed cases for which EOC is not activated



Summary

Week 47: 18th – 24th November 2024

Lassa Fever ^{1,2}	Cerebrospinal Meningitis (CSM) ^{1,4}	Yellow Fever ^{1,4}
133 Suspected case(s)	1 Suspected case(s)	54 Suspected case(s)
12 Confirmed case(s)	0 Confirmed case(s)	0 Confirmed case(s)
4 Death(s)	0 Death(s)	0 Death(s)
Cholera ^{1,4}	Measles ^{1,4}	Mpox ^{1,4}
532 Suspected case(s)	180 Suspected case(s)	28 Suspected case(s)
0 Confirmed case(s)	29 Confirmed case(s)	2 Confirmed case(s)
8 Death(s)	0 Death(s)	0 Death(s)
Acute Flaccid Paralysis (AFP) ^{1,4}	National Sentinel influenza surveillance ⁵	Coronavirus Disease ¹
142 Suspected case(s)	6 Suspected case(s)	24 Suspected case(s)
0 Confirmed case(s)	1 Confirmed case(s)	0 Confirmed case(s)
0 Death(s)		0 Death(s)
Diphtheria ^{1,4}		
25 Suspected case(s)		
19 Confirmed case(s)		
4 Death(s)		

1. Information for this disease was retrieved from the Technical Working Group and Situation Reports
2. Case Fatality Rate (CFR) for this disease is reported for confirmed cases only.
3. CFR for this disease is reported for total cases i.e. suspected + confirmed.
4. Information for sentinel influenza was retrieved from the laboratory.

Lassa Fever

Week 47

Suspected cases	Confirmed cases	Deaths	Number of States and LGAs affected
133	12	4	State: 10 LGA: 19

Year to date (week 1 – 47)

Suspected cases		Confirmed cases		Deaths		CFR	
2023	2024	2023	2024	2023	2024	2023	2024
8423	9195	1154	1089	197	179	17.1%	16.4%

Figure 1: Number of suspected and confirmed cases of Lassa Fever, Nigeria, Weeks 1 – 47, 2024

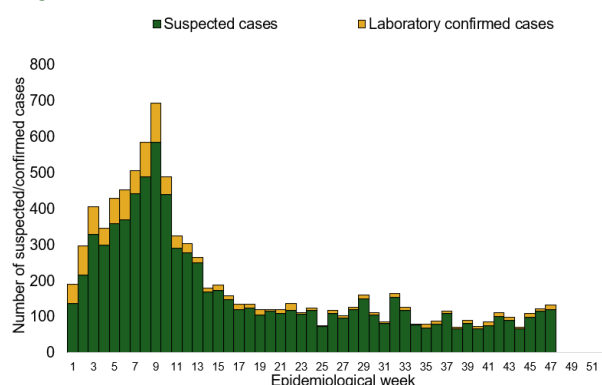
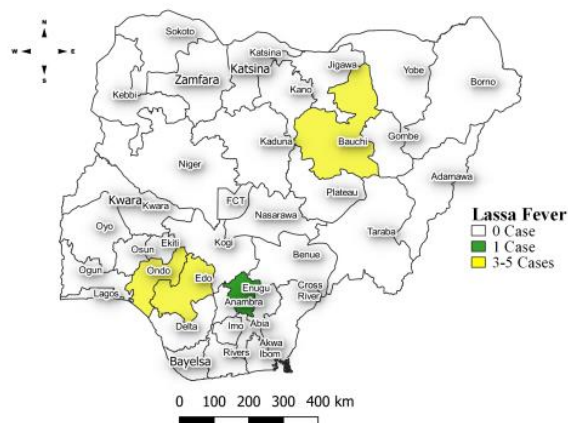


Figure 2: Location of confirmed cases of Lassa Fever by State, Nigeria, week 47, 2024



Key points

- There were 133 suspected cases of Lassa Fever reported from 19 LGAs in 10 states. There were 12 laboratory confirmed cases and four deaths were recorded.

Actions

To date:

- National Lassa fever multi-partner, multi-sectoral Technical Working Group (TWG) continues to coordinate the response activities at all levels.
- Analysed the readiness assessment across the 36 states and the FCT
- Participated on a learning visit to the Medical Research Council Unit The Gambia (MRCG) at the London School of Hygiene & Tropical Medicine (LSHTM)
- Held the 1st Webinar in the series in collaboration with the RCCE pillar/partners
- Finalize and share the report of the readiness survey across all levels
- Continuous coordination of the webinar series in collaboration with all pillar leads

Cerebrospinal Meningitis (CSM)

Week 47

Suspected cases	Confirmed cases	Deaths	Number of States and LGAs affected
1	0	0	State: 1 LGA: 1

Year to date (week 1 – 47)

Suspected cases		Confirmed cases		Deaths		CFR	
2023	2024	2023	2024	2023	2024	2023	2024
2000	3061	75	50	75	128	3.7%	4.2%

Figure 3: Number of suspected and confirmed cases of CSM, Nigeria, weeks 1 – 47, 2024

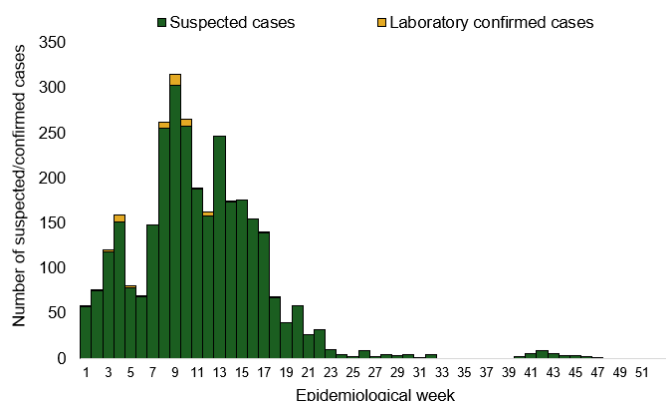
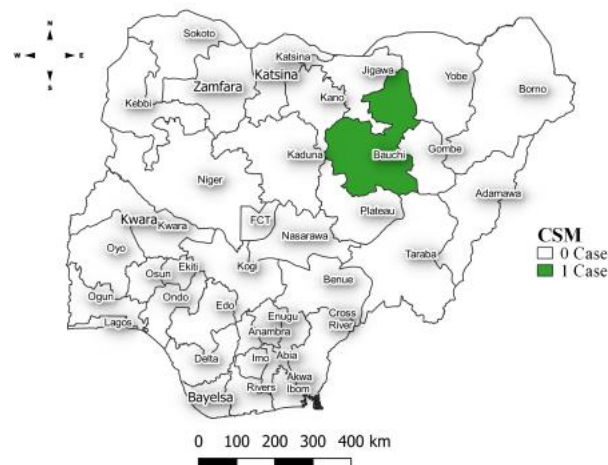


Figure 4: Location of suspected cases of CSM by State, Nigeria, week 47, 2024



Key points

- There was one suspected case of Cerebrospinal meningitis (CSM) reported from one LGA in Bauchi state. There was no laboratory confirmed case and no death was recorded.

Actions

To date:

- National CSM TWG meets weekly to review reports from states and plan appropriately.
- Providing offsite/onsite support to states and follow up for daily reporting and progress with response activities
- Implementation of CSM reactive vaccination campaign in high burden LGAs/Wards in Jigawa state led by NPHCDA
- Activated Multi-sectoral State-level Emergency Operation Centres (EOCs) in Jigawa and Yobe, Katsina, Bauchi and Gombe state

Yellow Fever

Week 47

Suspected cases	Confirmed cases	Deaths	Number of States and LGAs affected
54	0	0	State: 21 + FCT LGA: 51

Year to date (week 1 – 47)

Suspected cases		Confirmed cases		Deaths		CFR	
2023	2024	2023	2024	2023	2024	2023	2024
2838	2585	22	23	9	2	0.3%	0.08%

Figure 5: Number of suspected and confirmed cases of Yellow Fever, Nigeria, weeks 1 – 47, 2024

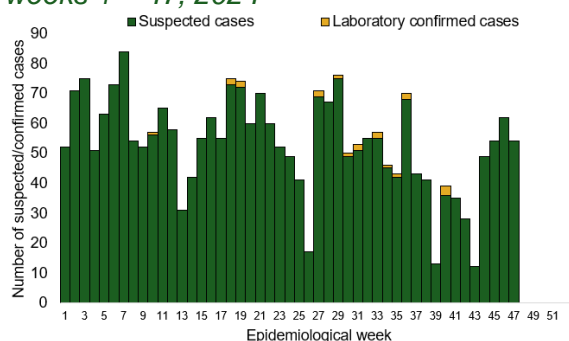
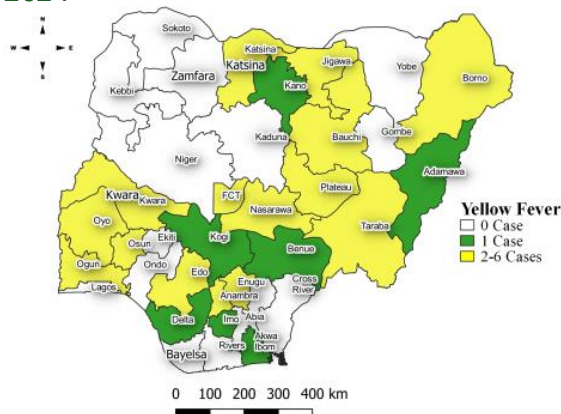


Figure 6: Location of suspected cases of Yellow Fever by States, Nigeria, week 47, 2024



Key points

- There were 54 suspected cases of Yellow Fever (YF) reported from 51 LGAs in 21 states and FCT. There was no laboratory confirmed case and no death was recorded.

Actions

To date:

- National YF multi-partner Technical Working Group (TWG) continues to coordinate activities across states.
- Conducted dynamic risk assessment to guide overall preparedness and response strategies.
- Provided off-site support to states to Ondo and Bayelsa states with confirmed cases
- Harmonizing surveillance and laboratory data
- Regular sample testing at the regional reference laboratories
- Coordination of yellow fever sample management and transportation from all states to the regional reference laboratory

Cholera

Week 47

Suspected cases	Confirmed cases	Deaths	Number of States and LGAs affected
532	0	8	State: 9 LGA: 27

Year to date (week 1 – 47)

Suspected cases		Confirmed cases		Deaths		CFR	
2023	2024	2023	2024	2023	2024	2023	2024
3637	24215	52	408	125	719	3.4%	3%

Figure 7: Number of suspected and confirmed cases of Cholera, Nigeria, weeks 1 – 47, 2024

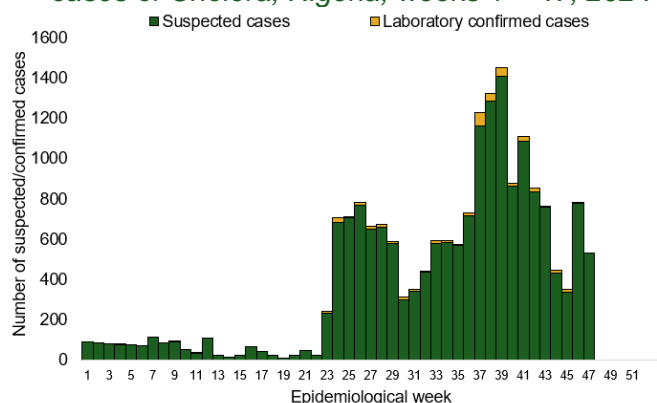
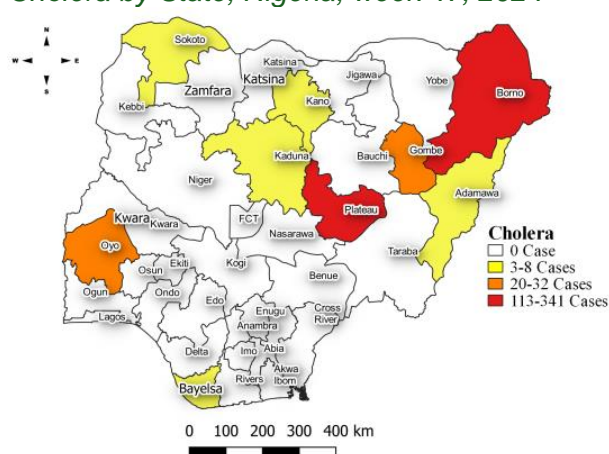


Figure 8: Location of suspected cases of Cholera by State, Nigeria, week 47, 2024



Key points

- There were 532 suspected cases of Cholera reported from 27 LGAs in nine states. There was no laboratory confirmed case and eight deaths were recorded.

Actions

To date

- National Cholera Multi-Sectoral Technical Working Group (TWG) is monitoring all states and supporting affected states.
- Activated the National Emergency Operating Centre (EOC) to monitor responses activities in all affected states
- On-site support in 9 states Lagos, Bayelsa, Abia, Zamfara, Bauchi, Katsina, Cross River, Ebonyi and Rivers
- Develop priority areas for multi-sectoral intervention (Hotspots mapping)

Measles

Week 47

Suspected cases	Confirmed cases	Deaths	Number of States and LGAs affected
180	29	0	State: 25 LGA: 82

Year to date (week 1 – 47)

Suspected cases		Confirmed cases		Deaths		CFR	
2023	2024	2023	2024	2023	2024	2023	2024
19235	16868	1940	2552	122	97	0.6%	0.6%

Figure 9: Number of suspected and confirmed cases of Measles, Nigeria, weeks 1 – 47, 2024.

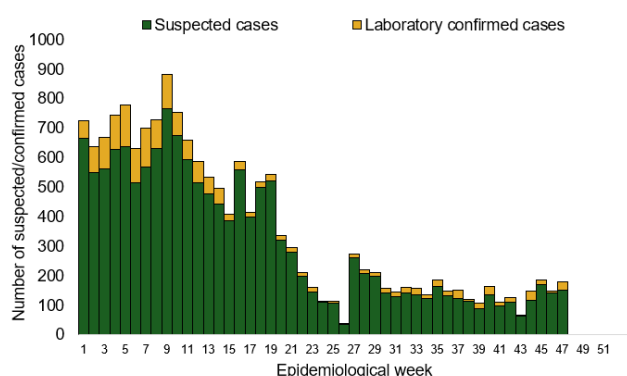
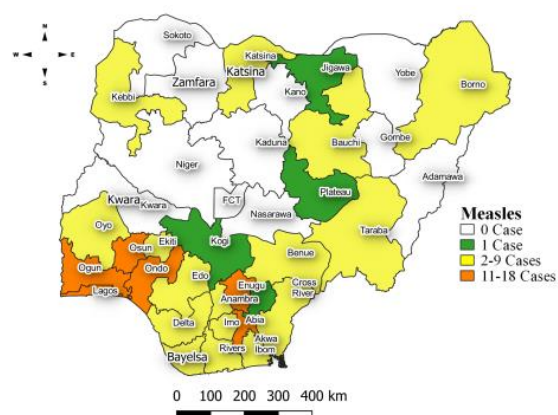


Figure 10: Location of suspected cases of Measles by State, Nigeria, week 47, 2024



Key points

- There were 180 suspected cases of Measles reported from 82 LGAs in 25 states. There were 29 laboratory confirmed cases and no death was recorded.

Actions

To date

- National Measles TWG is closely monitoring measles surveillance data and providing feedback to relevant agencies and development partners.
- Supported NPHCDA in the pre-implementation and implementation of 2024 Integrated Supplementary Immunization Activities (SIA)
- Distribution of Measles and Rubella Surveillance Guidelines:
- Supported the validation of the National Measles Elimination Strategic Plan (2019–2028) workshop
- Validated the Measles Outbreak Preparedness and Response (MOBR) Training Materials to standardize training content and materials for outbreak preparedness

Mpox

Week 47

Suspected cases	Confirmed cases	Deaths	Number of States and LGAs affected
28	2	0	State: 6 LGA: 18

Year to date (week 1 – 47)

Suspected cases		Confirmed cases		Deaths		CFR	
2023	2024	2023	2024	2023	2024	2023	2024
931	1264	80	105	2	0	0.2%	0%

Figure 11: Number of suspected and confirmed cases of Mpox, Nigeria, weeks 1 – 47, 2024.

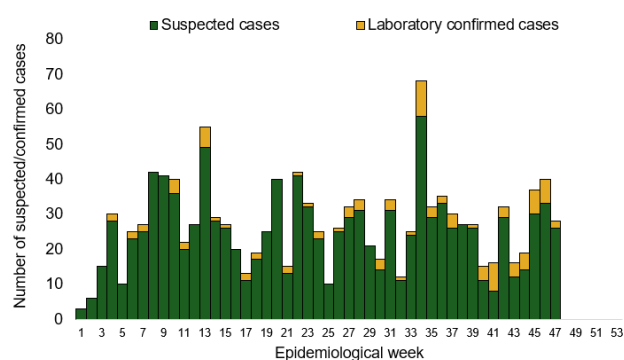
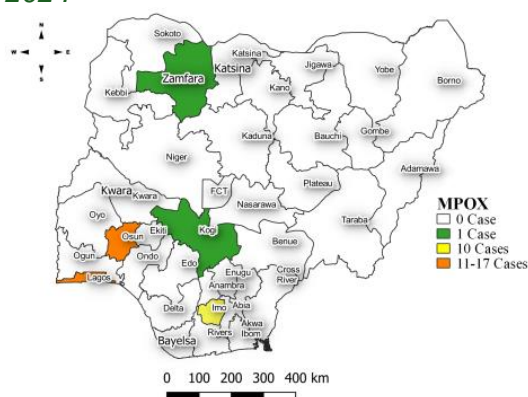


Figure 12: Location of suspected cases of Mpox by State, Nigeria, week 47, 2024



Key points

- There were 28 suspected cases of Mpox reported from 18 LGAs in six states. There were two laboratory confirmed cases and no death was recorded.

Actions To date

- Mpox Incident Management System activated to coordinate response activities
- Supported training of state Epidemiologist and DSNO with surveillance support staff
- Optimisation of 6 laboratories for Mpox testing and supported remote capacity building of laboratory staff at the Molecular Laboratories
- Conducted capacity building of health educators on Mpox RCCE and Content development for RCCE materials
- Supported the coordination of mpox research (UKPHRST/ NCDC study on Mpox collaborative study

Acute Flaccid Paralysis (AFP)

Week 47

Suspected cases	Confirmed cases	Deaths	Number of States and LGAs affected
142	0	0	State: 28 LGA: 99

Year to date (week 1 – 47)

Suspected cases		Confirmed cases		Deaths		CFR	
2023	2024	2023	2024	2023	2024	2023	2024
6285	5510	0	0	0	0	0%	0%

Figure 13: Number of suspected and confirmed cases of AFP, Nigeria, weeks 1 – 47, 2023

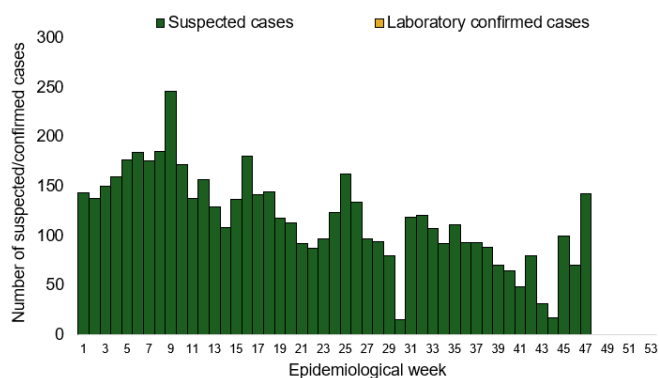
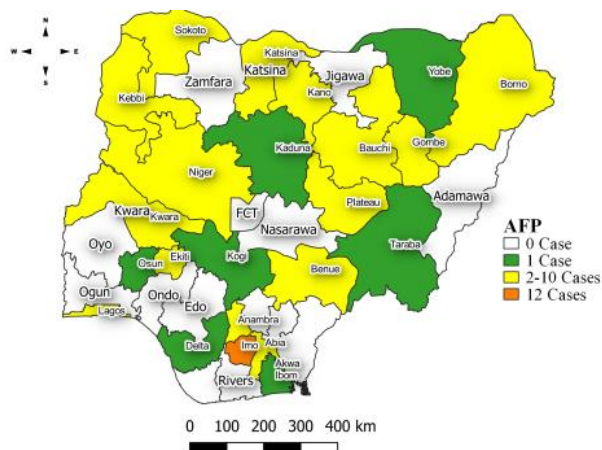


Figure 14: Location of suspected cases of AFP by State, Nigeria, week 47, 2024



Key points

- There were 142 suspected cases of AFP reported from 99 LGAs in 28 states. There was no laboratory confirmed case and no death was recorded.

National Influenza Sentinel Surveillance

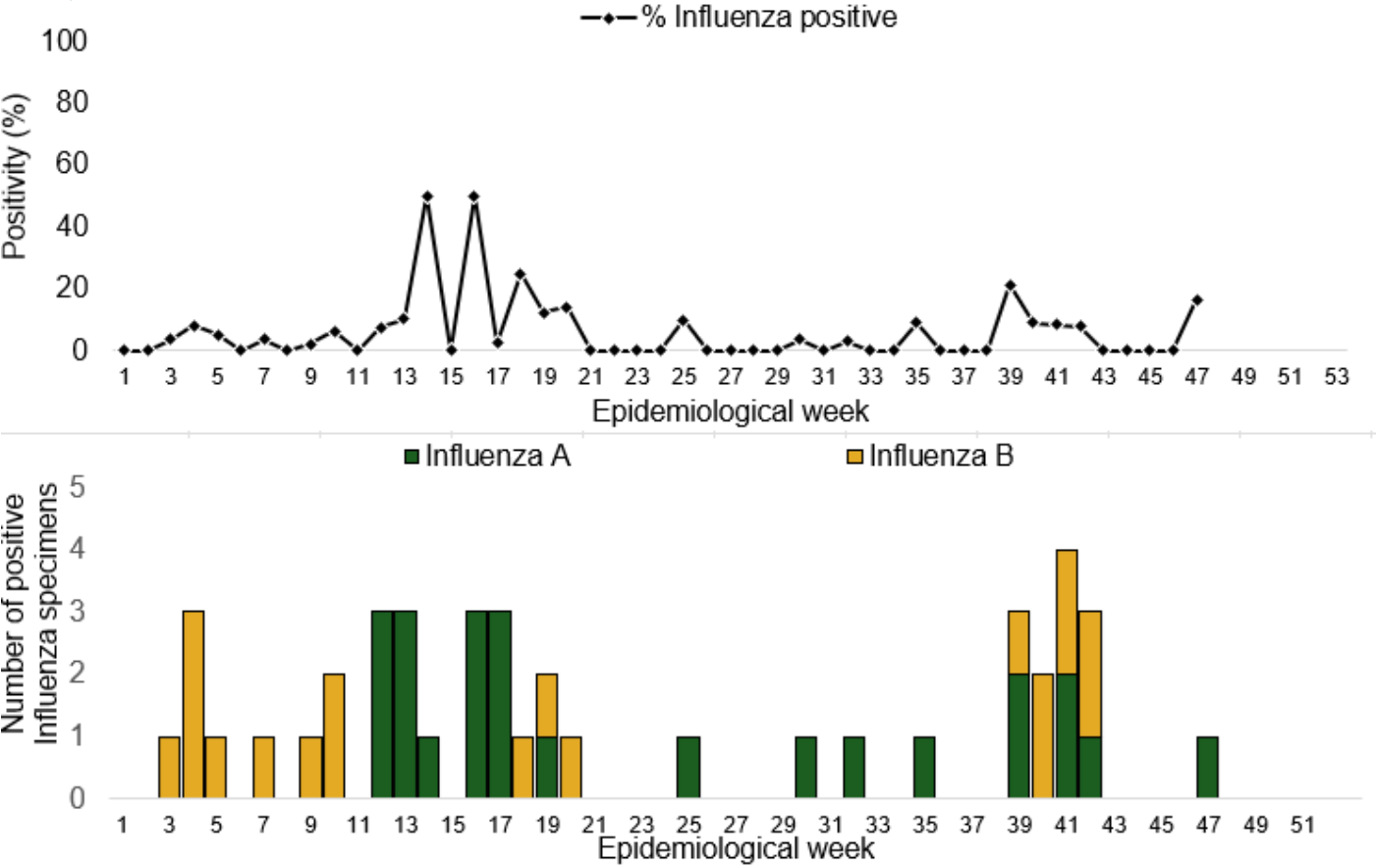
Week 47

Suspected Cases	Confirmed Cases	Confirmed Case by type	
		Influenza A	Influenza B
6	1	1	0

Year to date (week 1 – 47)

Suspected cases	Total Confirmed Cases	Confirmed cases by type	
787	43	Influenza A	Influenza B
		24	19

Figure 15: Number of influenza positive specimens by type and percentage positive by epidemiological week, 2024.



Coronavirus Disease (COVID-19)

Week 47

Suspected cases	Confirmed cases	Deaths	Number of States and LGAs affected
24	0	0	State: 1 LGA: 1

Year to date (Week 1- 47)

Suspected cases		Confirmed cases		Deaths		CFR	
2023	2024	2023	2024	2023	2024	2023	2024
64675	1872	661	804	181	1	0.3%	0.05%

Figure 16: Epidemic curve of confirmed cases of COVID-19, Nigeria, week 1 - 47, 2024

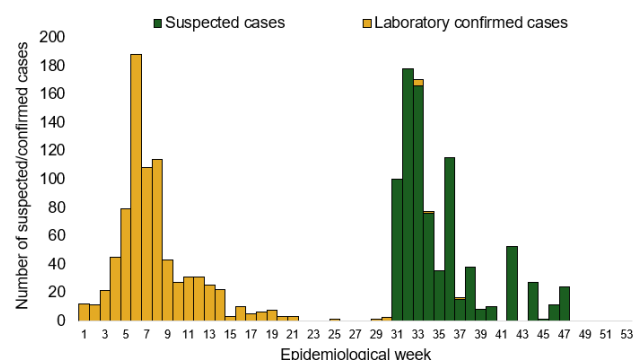
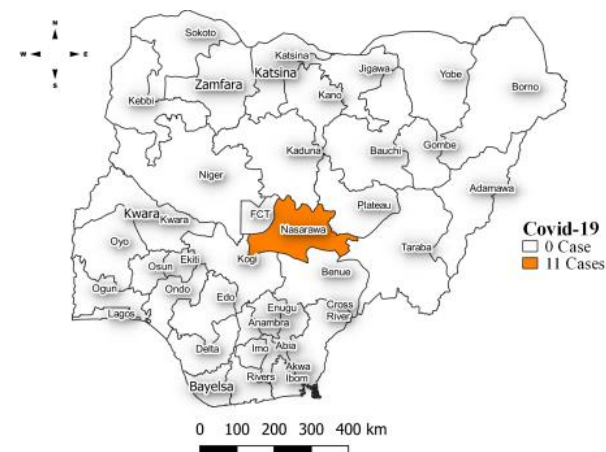


Figure 17: Location of **confirmed** cases of COVID-19 by State, Nigeria, as at week 47, 2024



Key points

- There were 24 suspected cases of Covid 19 reported from one LGA in Nasarawa state. There was no laboratory confirmed case and no death was recorded.

Actions

To date

- Follow up with the Lab Data team to ensure Data entry on SORMAS
- Harmonization meeting of Covid-19 and National influenza Sentinel Sites
- Enhanced surveillance activity to encourage test rates
- Coordinate training sessions for surveillance officers on proper data entry protocols for SORMAS.
- Implement regular site visits to verify data quality and compliance with harmonization protocols

Diphtheria

Week 47

Suspected cases	Confirmed cases	Deaths	Number of States and LGAs affected
25	19	4	State: 2 LGA: 12

Year to date (week 1 – 47)

Suspected cases		Confirmed cases		Deaths		CFR	
2023	2024	2023	2024	2023	2024	2023	2024
21182	16817	12341	10382	743	474	3.5%	2.8%

Figure 18: Number of suspected and confirmed cases of Diphtheria, Nigeria, weeks 1 – 47, 2024

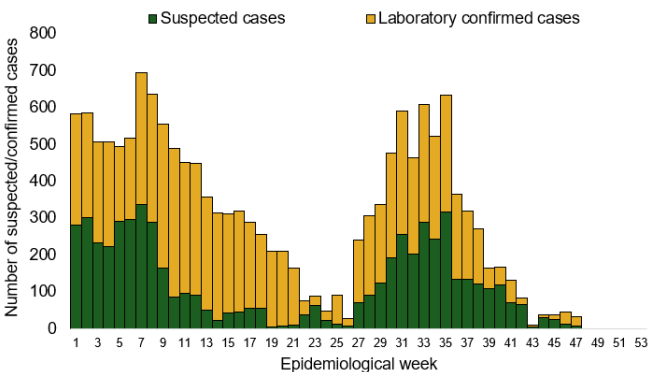
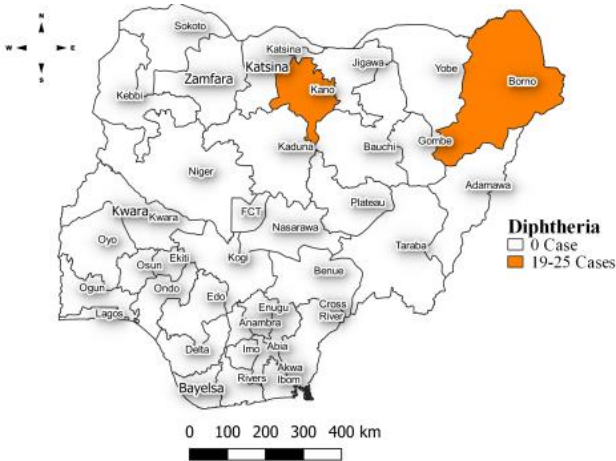


Figure 19: Location of suspected cases of Diphtheria by State, Nigeria, week 47, 2024



Key points

- There were 25 suspected cases of Diphtheria reported from 12 LGAs in two states. There were 19 confirmed cases and four deaths were recorded.

Actions

To date

- National Diphtheria Technical Working Group (TWG) is monitoring activities in all states.
- Developed Diphtheria surveillance and outbreak response guidelines
- Established Diphtheria laboratory testing network across state
- Conducted case management and IPC training for healthcare workers involved in Diphtheria case management
- Supported NPHCDA in the Implemented reactive mass vaccinations campaign in affected states across states

Event Based Surveillance (EBS)

For the reporting week 47

- 122 Calls were successfully routed to agents and answered
- 0 calls not routed to agents (Failed call)
- 122 total number of calls (successful and failed)
- 0 number of SMS received
- 0 WhatsApp/live chat messages received
- The percentage of failed to total inbound calls 0%
- A suspected case of Yellow Fever signal picked in Gombe State

For weeks 1 - 47

- 6,215 calls were successfully routed to agents and answered
- 210 calls not routed to agents (Failed call)
- 6,518 total inbound calls recorded
- The Percentage of failed to total inbound calls: 3.3%
- 79 Signals were picked and escalated

Categories of Calls

- General inquiries
- Hoax call and others
- Enquiries on COVID-19 vaccination certificate 3
- Report of health conditions 20
- Inquiry on Cholera 12
- Inquiry on malaria vaccine 3
- Health Declaration form-related queries
- Inquiries on Diphtheria symptoms, treatment, and Vaccine
- Inquiries on yellow fever vaccine 8
- Inquiries on Lassa fever 13
- Inquiries on Mpox 35
- Inquiries on Mpox vaccine 28

Figure 20: Number of successful and failed calls, weeks 1 – 47, 2024

