



NIGERIA CENTRE FOR DISEASE CONTROL AND PREVENTION

Nigeria Centre for Disease Control and Prevention

Protecting the health of Nigerians

Weekly Epidemiological Report

Week 40: 30th September – 6th October 2024

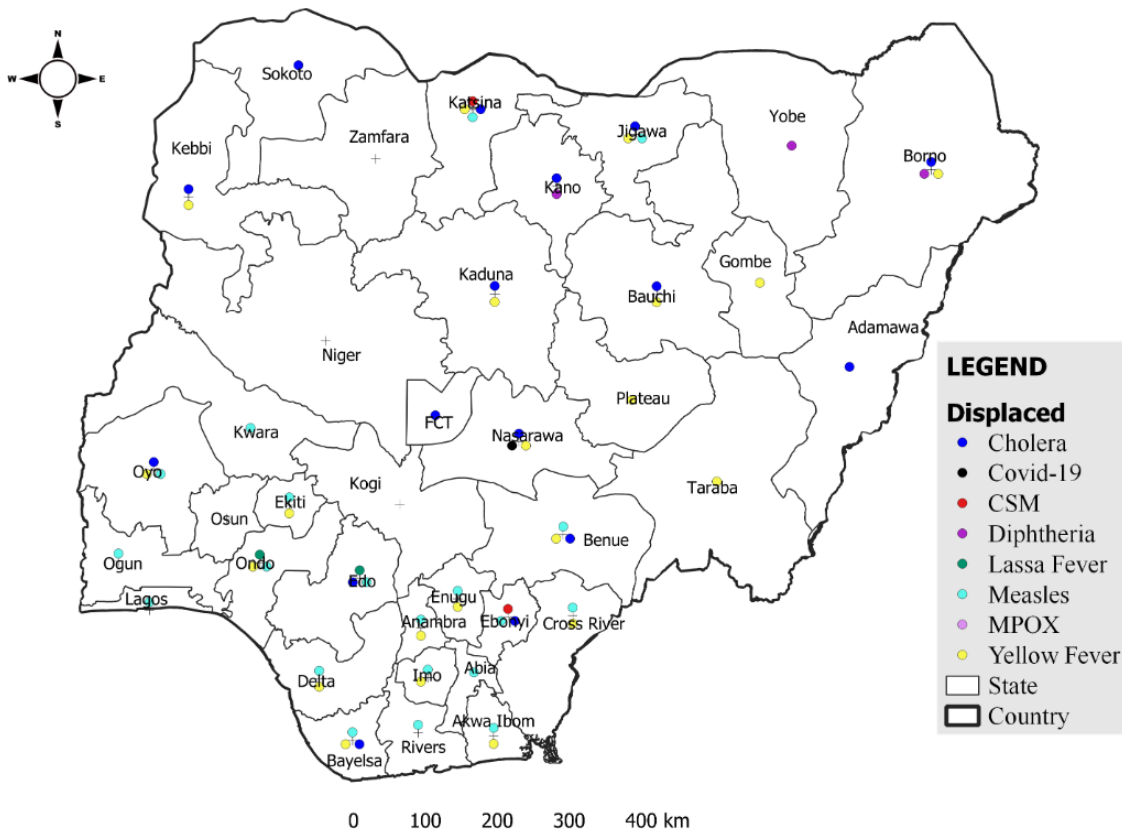
Summary of Incidents

Ongoing incidents

2

Ongoing incidents are defined as confirmed cases where a national EOC or equivalent has been activated (Cholera and Diphtheria)

Other incidents are those with confirmed cases for which EOC is not activated



Disclaimer:

Summary

Week 40: 30th September – 6th October 2024

Lassa Fever ^{1,2}	Cerebrospinal Meningitis (CSM) ^{1,4}	Yellow Fever ^{1,4}
73 Suspected case(s)	2 Suspected case(s)	39 Suspected case(s)
7 Confirmed case(s)	0 Confirmed case(s)	3 Confirmed case(s)
2 Death(s)	0 Death(s)	0 Death(s)
Cholera ^{1,4}	Measles ^{1,4}	Mpox ^{1,4}
877 Suspected case(s)	113 Suspected case(s)	15 Suspected case(s)
12 Confirmed case(s)	10 Confirmed case(s)	4 Confirmed case(s)
29 Death(s)	0 Death(s)	0 Death(s)
Acute Flaccid Paralysis (AFP) ^{1,4}	National Sentinel influenza surveillance ⁵	Coronavirus Disease ^{1,}
64 Suspected case(s)	22 Suspected case(s)	8 Suspected case(s)
0 Confirmed case(s)	2 Confirmed case(s)	0 Confirmed case(s)
0		0 Death(s)
Diphtheria ^{1,4}		
167 Suspected case(s)		
49 Confirmed case(s)		
5 Death(s)		

1. Information for this disease was retrieved from the Technical Working Group and Situation Reports
2. Case Fatality Rate (CFR) for this disease is reported for confirmed cases only.
3. CFR for this disease is reported for total cases i.e. suspected + confirmed.
4. Information for sentinel influenza was retrieved from the laboratory.

Lassa Fever

Week 40

Suspected cases	Confirmed cases	Deaths	Number of States and LGAs affected
73	7	2	State: 10 + FCT LGA: 23

Year to date (week 1 – 40)

Suspected cases		Confirmed cases		Deaths		CFR	
2023	2024	2023	2024	2023	2024	2023	2024
7621	8484	1086	1025	185	174	17%	17%

Figure 1: Number of suspected and confirmed cases of Lassa Fever, Nigeria, Weeks 1 – 40, 2024

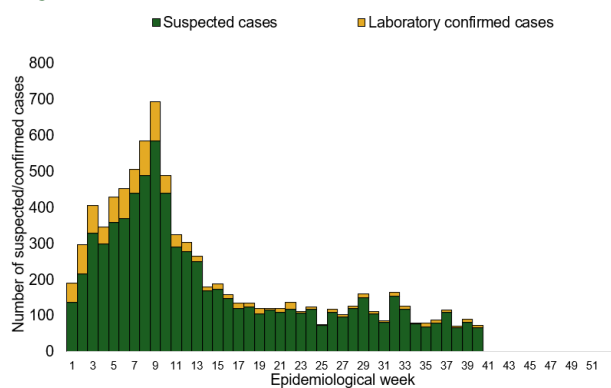
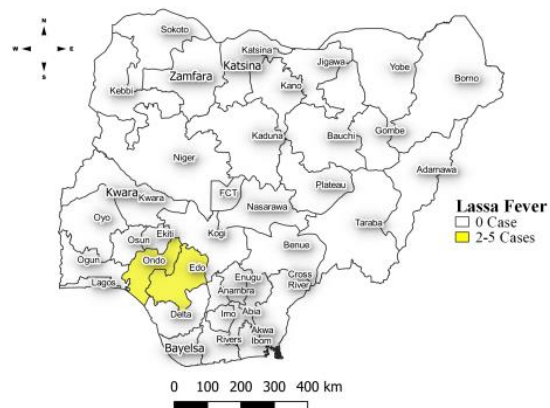


Figure 2: Location of **confirmed** cases of Lassa Fever by State, Nigeria, week 40, 2024



Key points

- There were 73 suspected cases of Lassa Fever reported from 23 LGAs in 10 states and FCT. There were seven laboratory confirmed cases and two deaths were recorded.

Actions

To date:

- National Lassa fever multi-partner, multi-sectoral Technical Working Group (TWG) continues to coordinate the response activities at all levels.
- Participated in the Joint Review of National Red Cross Society 2024 Lassa fever DREF Operation
- Participated in the testing phase of the Human Centered Design (HCD) from Farm to Market
- Circulate the final AAR report to stakeholders

Cerebrospinal Meningitis (CSM)

Week 40

Suspected cases	Confirmed cases	Deaths	Number of States and LGAs affected
2	0	0	State: 2 LGA: 2

Year to date (week 1 – 40)

Suspected cases		Confirmed cases		Deaths		CFR	
2023	2024	2023	2024	2023	2024	2023	2024
1968	3031	74	50	75	128	3.8%	4.2%

Figure 3: Number of suspected and confirmed cases of CSM, Nigeria, weeks 1 – 40, 2024

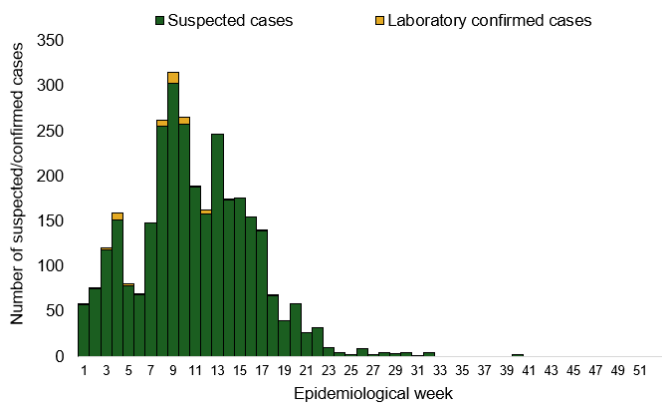
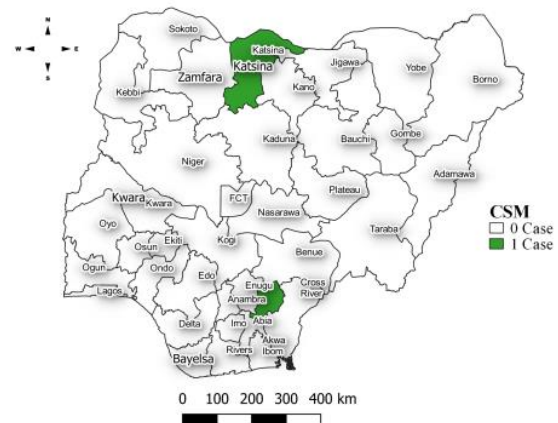


Figure 4: Location of suspected cases of CSM by State, Nigeria, week 40, 2024



Key points

- There were two suspected cases of Cerebrospinal meningitis (CSM) reported from two LGAs in two states. There was no laboratory confirmed case and no death was recorded.

Actions

To date:

- National CSM TWG meets weekly to review reports from states and plan appropriately.
- Providing offsite/onsite support to states and follow up for daily reporting and progress with response activities
- Implementation of CSM reactive vaccination campaign in high burden LGAs/Wards in Jigawa state led by NPHCDA
- Activated Multi-sectoral State-level Emergency Operation Centres (EOCs) in Jigawa and Yobe, Katsina, Bauchi and Gombe state

Yellow Fever

Week 40

Suspected cases	Confirmed cases	Deaths	Number of States and LGAs affected
39	3	0	State: 21 LGA: 45

Year to date (week 1 – 40)

Suspected cases		Confirmed cases		Deaths		CFR	
2023	2024	2023	2024	2023	2024	2023	2024
2482	2291	21	23	9	2	0.4%	0.1%

Figure 5: Number of suspected and confirmed cases of Yellow Fever, Nigeria, weeks 1 – 40, 2024

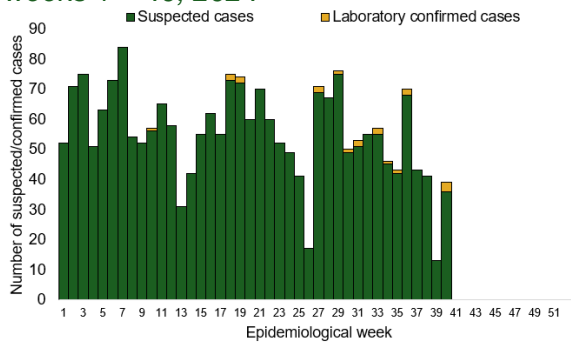
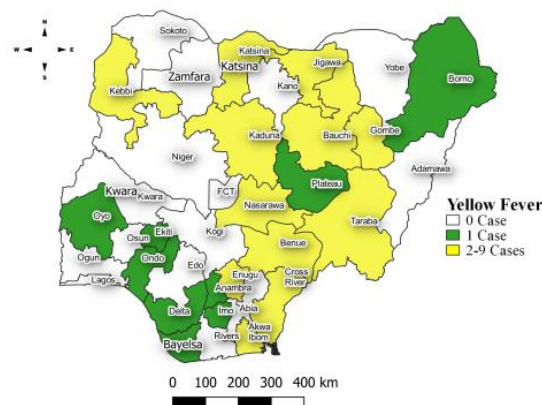


Figure 6: Location of suspected cases of Yellow Fever by States, Nigeria, week 40, 2024



Key points

- There were 39 suspected cases of Yellow Fever (YF) reported from 45 LGAs in 21 states. There were three laboratory confirmed cases and no death was recorded.

Actions

To date:

- National YF multi-partner Technical Working Group (TWG) continues to coordinate activities across states.
- Conducted dynamic risk assessment to guide overall preparedness and response strategies.
- Provided off-site support to states to Ondo and Bayelsa states with confirmed cases
- Harmonizing surveillance and laboratory data
- Regular sample testing at the regional reference laboratories
- Coordination of yellow fever sample management and transportation from all states to the regional reference laboratory

Cholera

Week 40

Suspected cases	Confirmed cases	Deaths	Number of States and LGAs affected
877	12	29	State: 15 + FCT LGA: 43

Year to date (week 1 – 40)

Suspected cases		Confirmed cases		Deaths		CFR	
2023	2024	2023	2024	2023	2024	2023	2024
3456	14862	45	329	84	547	2.4%	3.7%

Figure 7: Number of suspected and confirmed cases of Cholera, Nigeria, weeks 1 – 40, 2024

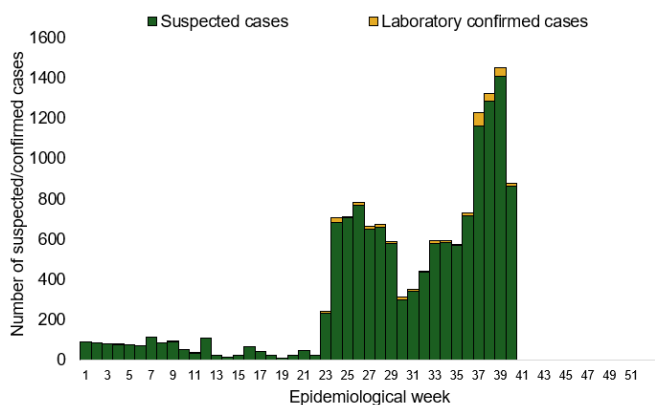
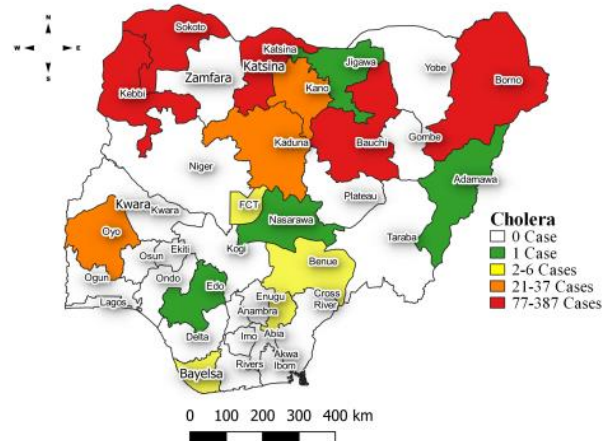


Figure 8: Location of suspected cases of Cholera by State, Nigeria, week 40, 2024



Key points

- There were 877 suspected cases of Cholera reported from 43 LGAs in 15 states and FCT. There were 12 laboratory confirmed cases and 29 deaths were recorded.

Actions To date

- National Cholera Multi-Sectoral Technical Working Group (TWG) is monitoring all states and supporting affected states.
- Activated the National Emergency Operating Centre (EOC) to monitor responses activities in all affected states
- On-site support in 9 states Lagos, Bayelsa, Abia, Zamfara, Bauchi, Katsina, Cross River, Ebonyi and Rivers
- Develop priority areas for multi-sectoral intervention (Hotspots mapping)

Measles

Week 40

Suspected cases	Confirmed cases	Deaths	Number of States and LGAs affected
113	10	0	State: 20 LGA: 69

Year to date (week 1 – 40)

Suspected cases		Confirmed cases		Deaths		CFR	
2023	2024	2023	2024	2023	2024	2023	2024
17937	18158	1682	2002	111	118	0.6%	0.6%

Figure 9: Number of suspected and confirmed cases of Measles, Nigeria, weeks 1 – 40, 2024.

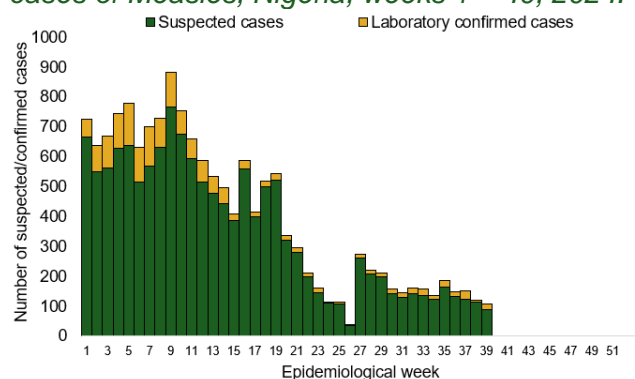
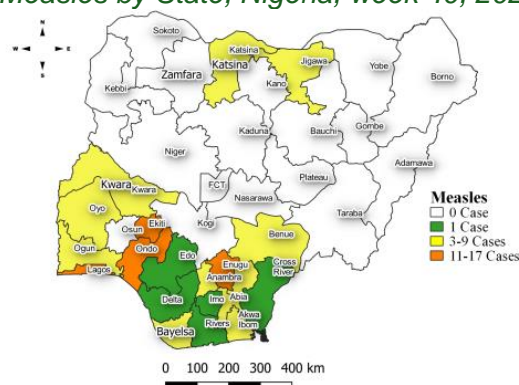


Figure 10: Location of suspected cases of Measles by State, Nigeria, week 40, 2024



Key points

- There were 113 suspected cases of Measles reported from 69 LGAs in 20 states. There were ten laboratory confirmed cases and no death was recorded.

Actions

To date

- National Measles TWG is closely monitoring measles surveillance data and providing feedback to relevant agencies and development partners.
- Supported NPHCDA in the pre-implementation and implementation of 2024 Integrated Supplementary Immunization Activities (SIA)
- Distribution of Measles and Rubella Surveillance Guidelines:
- Supported the validation of the National Measles Elimination Strategic Plan (2019–2028) workshop
- Validated the Measles Outbreak Preparedness and Response (MOBR) Training Materials to standardize training content and materials for outbreak preparedness

Mpox

Week 40

Suspected cases	Confirmed cases	Deaths	Number of States and LGAs affected
15	4	0	State: 5 LGA: 11

Year to date (week 1 – 40)

Suspected cases		Confirmed cases		Deaths		CFR	
2023	2024	2023	2024	2023	2024	2023	2024
928	1076	80	69	2	0	0.2%	0%

Figure 11: Number of suspected and confirmed cases of Mpox, Nigeria, weeks 1 – 40, 2024.

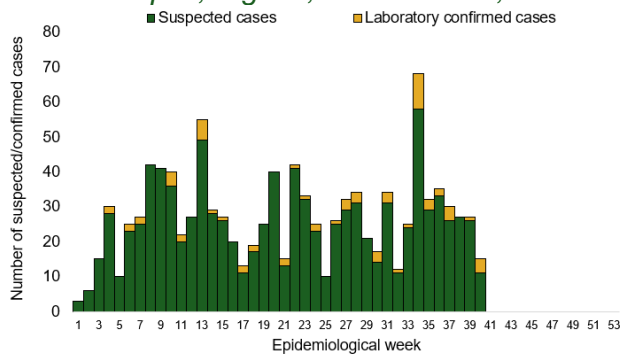
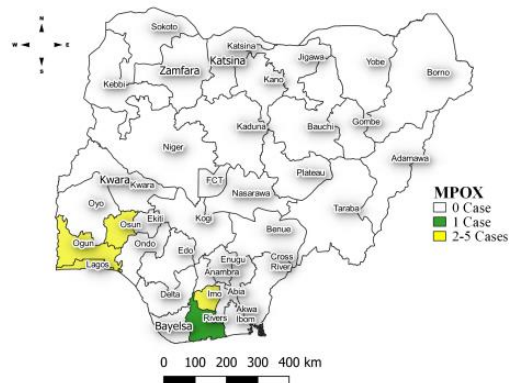


Figure 12: Location of suspected cases of Mpox by State, Nigeria, week 40, 2024



Key points

- There were 15 suspected cases of Mpox reported from 11 LGAs in five states. There were four laboratory confirmed cases and no death was recorded.

Actions To date

- Mpox Incident Management System activated to coordinate response activities
- Supported training of state Epidemiologist and DSNO with surveillance support staff
- Optimisation of 6 laboratories for Mpox testing and supported remote capacity building of laboratory staff at the Molecular Laboratories
- Conducted capacity building of health educators on Mpox RCCE and Content development for RCCE materials
- Supported the coordination of mpox research (UKPHRST/ NCDC study on Mpox collaborative study)

Acute Flaccid Paralysis (AFP)

Week 40

Suspected cases	Confirmed cases	Deaths	Number of States and LGAs affected
64	0	0	State: 18 LGA: 53

Year to date (week 1 – 40)

Suspected cases		Confirmed cases		Deaths		CFR	
2023	2024	2023	2024	2023	2024	2023	2024
5251	5024	0	0	0	0	0%	0%

Figure 13: Number of suspected and confirmed cases of AFP, Nigeria, weeks 1 – 40, 2023

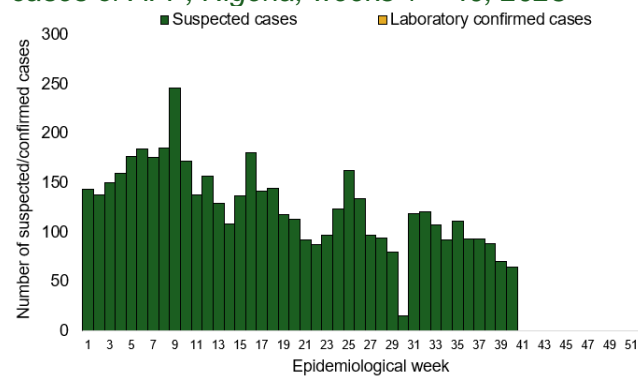
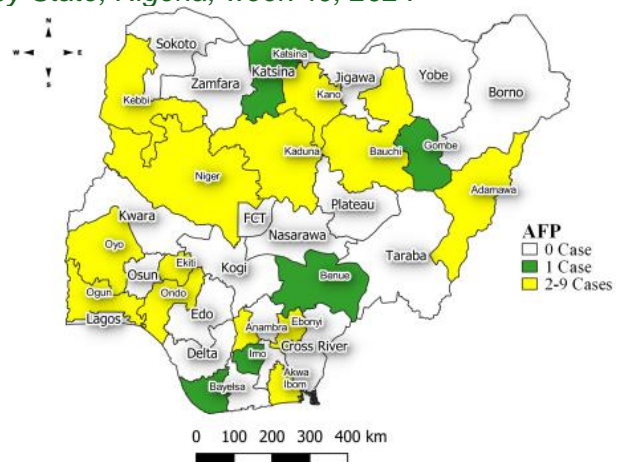


Figure 14: Location of suspected cases of AFP by State, Nigeria, week 40, 2024



Key points

- There were 64 suspected cases of AFP reported from 53 LGAs in 18 states. There was no laboratory confirmed case and no death was recorded.

National Influenza Sentinel Surveillance

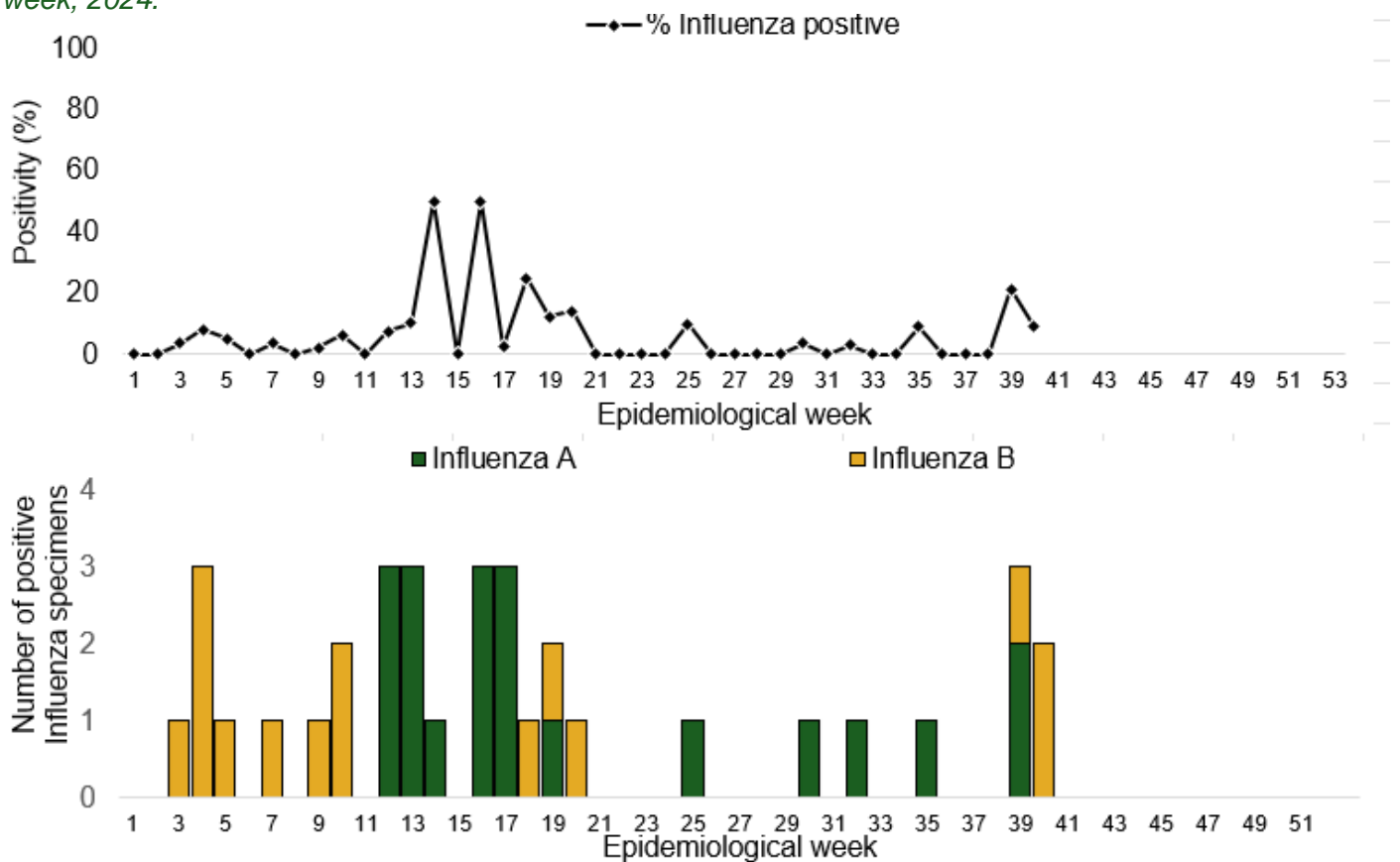
Week 40

Suspected Cases	Confirmed Cases	Confirmed Case by type	
		Influenza A	Influenza B
22	2	0	2

Year to date (week 1 – 40)

Suspected cases	Total Confirmed Cases	Confirmed cases by type	
644	35	Influenza A 20	Influenza B 15

Figure 15: Number of influenza positive specimens by type and percentage positive by epidemiological week, 2024.



Coronavirus Disease (COVID-19)

Week 40

Suspected cases	Confirmed cases	Deaths	Number of States and LGAs affected
8	0	0	State: 1 LGA: 1

Year to date (Week 1- 40)

Suspected cases		Confirmed cases		Deaths		CFR	
2023	2024	2023	2024	2023	2024	2023	2024
64532	1757	6620	804	181	1	0.3%	0.1%

Figure 16: Epidemic curve of confirmed cases of COVID-19, Nigeria, week 1 - 40, 2024

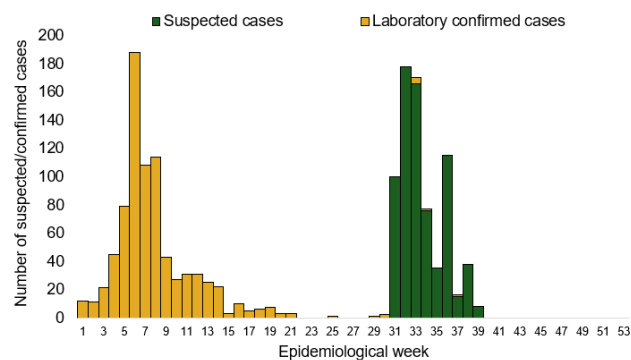
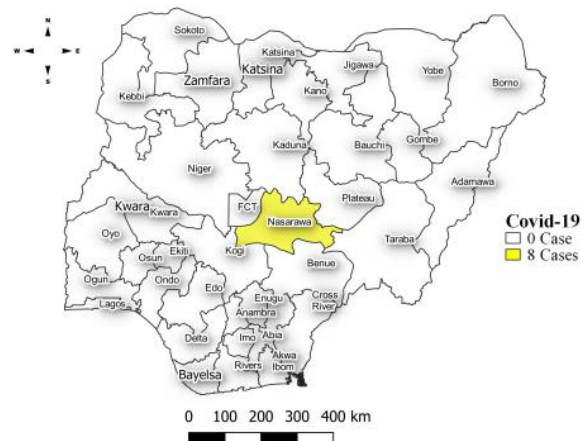


Figure 17: Location of suspected cases of COVID-19 by State, Nigeria, as at week 40, 2024



Key points

- There were eight suspected cases of Covid-19 reported from one LGA in Nasarawa state. There was no laboratory confirmed case and no death was recorded.

Actions

To date

- Follow up with the Lab Data team to ensure Data entry on SORMAS
- Harmonization meeting of Covid-19 and National influenza Sentinel Sites
- Enhanced surveillance activity to encourage test rates
- Coordinate training sessions for surveillance officers on proper data entry protocols for SORMAS.
- Implement regular site visits to verify data quality and compliance with harmonization protocols.

Diphtheria

Week 40

Suspected cases	Confirmed cases	Deaths	Number of States and LGAs affected
167	49	5	State: 3 LGA: 13

Year to date (week 1 – 40)

Suspected cases		Confirmed cases		Deaths		CFR	
2023	2024	2023	2024	2023	2024	2023	2024
14979	16412	8886	10217	642	447	4.3%	2.7%

Figure 18: Number of suspected and confirmed cases of Diphtheria, Nigeria, weeks 1 – 40, 2024

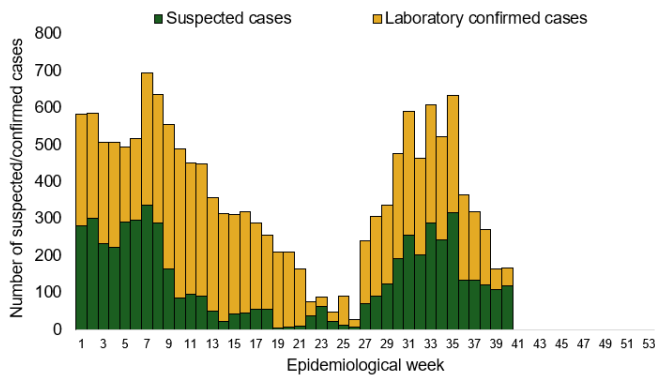
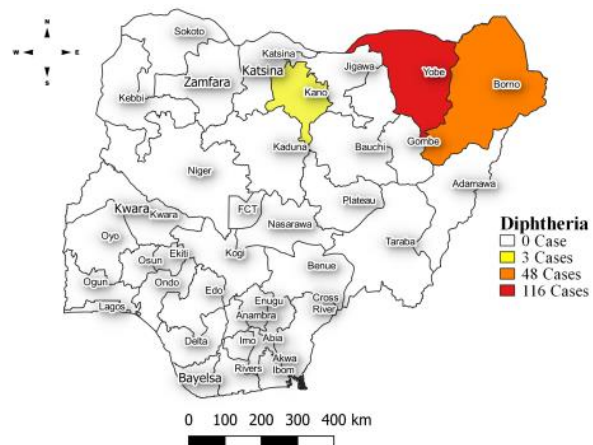


Figure 19: Location of suspected cases of Diphtheria by State, Nigeria, week 40, 2024



Key points

- There were 167 suspected cases of Diphtheria reported from 13 LGAs in three states. There were 49 confirmed cases and five deaths were recorded.

Actions To date

- National Diphtheria Technical Working Group (TWG) is monitoring activities in all states.
- Developed Diphtheria surveillance and outbreak response guidelines
- Established Diphtheria laboratory testing network across state
- Conducted case management and IPC training for healthcare workers involved in Diphtheria case management
- Supported NPHCDA in the Implemented reactive mass vaccinations campaign in affected states across states

Event Based Surveillance (EBS)

Week 40

Key points

For the reporting week 40

- 168 Calls were successfully routed to agents and answered
- 0 calls not routed to agents (Failed call)
- 168 total number of calls (successful and failed)
- 0 number of SMS received
- 0 WhatsApp/live chat messages received
- The percentage of failed to total inbound calls 0.0%
- 3 signals picked and escalated to the respectively State
 - 1 confirmed cholera cases in Maiduguri, Borno State
 - Flood displaces 82 communities in Niger State
 - 6 deaths from acute diarrhoea in Wamako LGA, Sokoto State.

For week 1 – 40

- 4,792 calls were successfully routed to agents and answered
- 206 calls not routed to agents (Failed call)
- 5,001 total inbound calls recorded
- The Percentage of failed to total inbound calls: 4.2%
- 73 Signals picked and escalated

Categories of Calls

- General inquiries 87
- Hoax call and others 35
- Report of health conditions 16
- Inquiry on Cholera 15
- Health Declaration form-related queries 8
- Inquiries on employment

Figure 20: Number of successful and failed calls, weeks 1 – 40, 2024

