



NIGERIA CENTRE FOR DISEASE CONTROL AND PREVENTION

Nigeria Centre for Disease Control and Prevention

Protecting the health of Nigerians

# Weekly Epidemiological Report

Week 39: 23<sup>rd</sup> – 29<sup>th</sup> September 2024

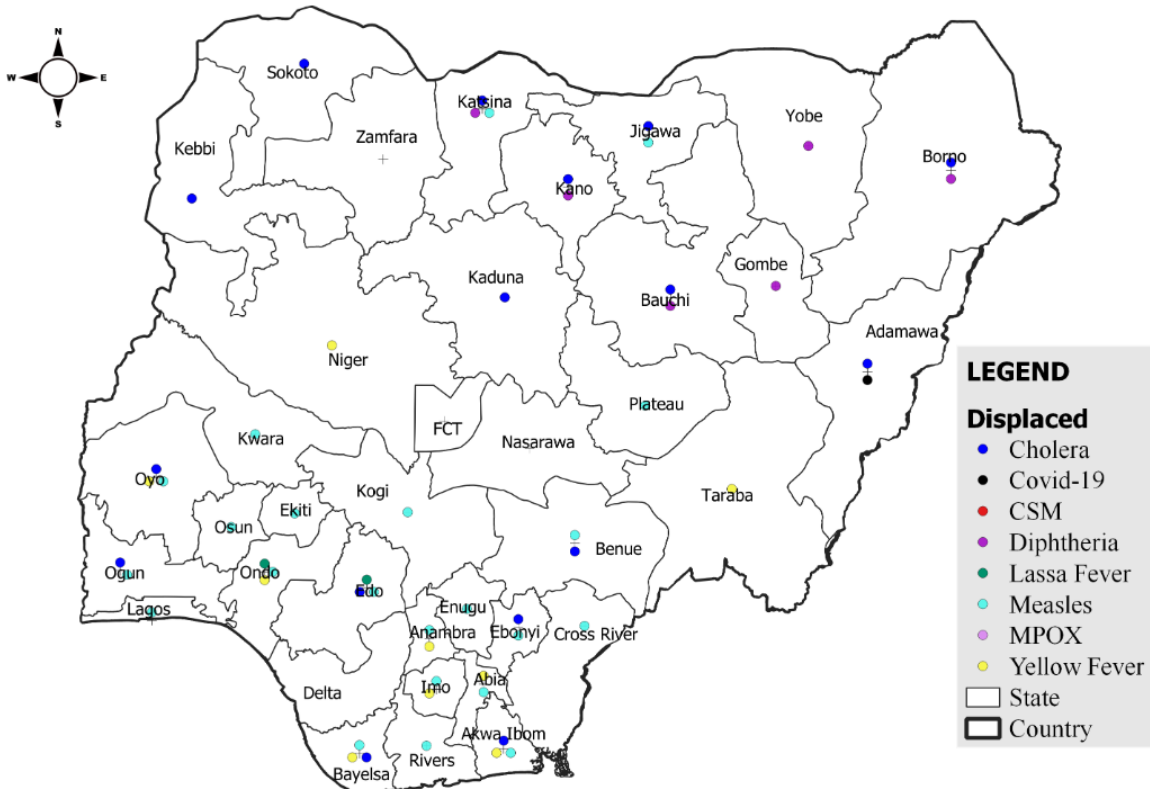
## Summary of Incidents

### Ongoing incidents

2

Ongoing incidents are defined as confirmed cases where a national EOC or equivalent has been activated (Cholera and Diphtheria)

Other incidents are those with confirmed cases for which EOC is not activated



0 100 200 300 400 km

Disclaimer:

## Summary

Week 39: 23<sup>rd</sup> – 29<sup>th</sup> September 2024

Lassa Fever <sup>1,2</sup>	Cerebrospinal Meningitis (CSM) <sup>1,4</sup>	Yellow Fever <sup>1,4</sup>
90 Suspected case(s)	0 Suspected case(s)	13 Suspected case(s)
9 Confirmed case(s)	0 Confirmed case(s)	0 Confirmed case(s)
1 Death(s)	0 Death(s)	0 Death(s)
Cholera <sup>1,4</sup>	Measles <sup>1,4</sup>	Mpox <sup>1,4</sup>
1452 Suspected case(s)	108 Suspected case(s)	27 Suspected case(s)
42 Confirmed case(s)	19 Confirmed case(s)	1 Confirmed case(s)
73 Death(s)	0 Death(s)	0 Death(s)
Acute Flaccid Paralysis (AFP) <sup>1,4</sup>	National Sentinel influenza surveillance <sup>5</sup>	Coronavirus Disease <sup>1,</sup>
70 Suspected case(s)	14 Suspected case(s)	10 Suspected case(s)
0 Confirmed case(s)	2 Confirmed case(s)	0 Confirmed case(s)
0		0 Death(s)
Diphtheria <sup>1,4</sup>		
164 Suspected case(s)		
57 Confirmed case(s)		
4 Death(s)		

- Information for this disease was retrieved from the Technical Working Group and Situation Reports
- Case Fatality Rate (CFR) for this disease is reported for confirmed cases only.
- CFR for this disease is reported for total cases i.e. suspected + confirmed.
- Information for sentinel influenza was retrieved from the laboratory.

## Lassa Fever

### Week 39

Suspected cases	Confirmed cases	Deaths	Number of States and LGAs affected
90	9	1	State: 12 LGA: 26

### Year to date (week 1 – 39)

Suspected cases		Confirmed cases		Deaths		CFR	
2023	2024	2023	2024	2023	2024	2023	2024
7554	8411	1081	1018	182	172	16.8%	16.9%

Figure 1: Number of suspected and confirmed cases of Lassa Fever, Nigeria, Weeks 1 – 39, 2024

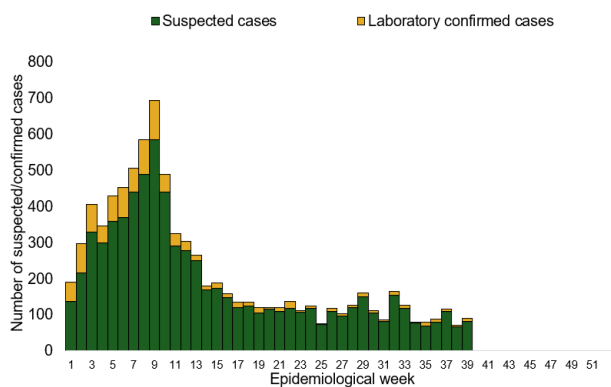
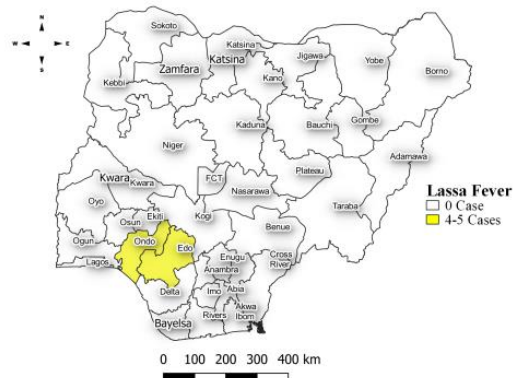


Figure 2: Location of **confirmed** cases of Lassa Fever by State, Nigeria, week 39, 2024



## Key points

- There were 90 suspected cases of Lassa Fever reported from 26 LGAs in 12 states. There were nine laboratory confirmed cases and one death was recorded.

## Actions

### To date:

- National Lassa fever multi-partner, multi-sectoral Technical Working Group (TWG) continues to coordinate the response activities at all levels.
- Participated in the Joint Review of National Red Cross Society 2024 Lassa fever DREF Operation
- Participated in the testing phase of the Human Centered Design (HCD) from Farm to Market
- Circulate the final AAR report to stakeholders

## Cerebrospinal Meningitis (CSM)

### Week 39

Suspected cases	Confirmed cases	Deaths	Number of States and LGAs affected
0	0	0	State: 0 LGA: 0

### Year to date (week 1 – 39)

Suspected cases		Confirmed cases		Deaths		CFR	
2023	2024	2023	2024	2023	2024	2023	2024
1964	3029	74	50	75	128	3.8%	4.2%

Figure 3: Number of suspected and confirmed cases of CSM, Nigeria, weeks 1 – 39, 2024

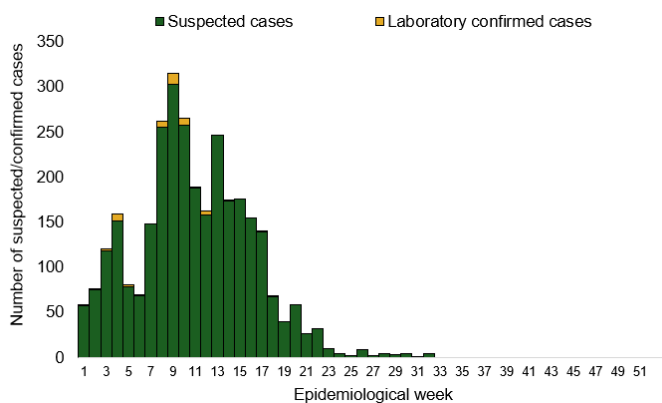
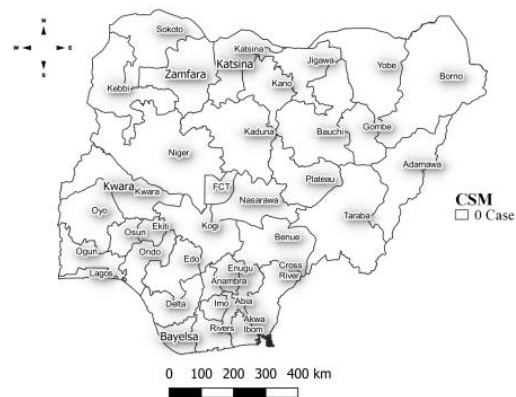


Figure 4: Location of suspected cases of CSM by State, Nigeria, week 39, 2024



### Key points

- There was no case reported for this week.

### Actions

#### To date:

- National CSM TWG meets weekly to review reports from states and plan appropriately.
- Providing offsite/onsite support to states and follow up for daily reporting and progress with response activities
- Implementation of CSM reactive vaccination campaign in high burden LGAs/Wards in Jigawa state led by NPHCDA
- Activated Multi-sectoral State-level Emergency Operation Centres (EOCs) in Jigawa and Yobe, Katsina, Bauchi and Gombe state

## Yellow Fever

### Week 39

Suspected cases	Confirmed cases	Deaths	Number of States and LGAs affected
13	0	0	State: 9 LGA: 12

### Year to date (week 1 – 39)

Suspected cases		Confirmed cases		Deaths		CFR	
2023	2024	2023	2024	2023	2024	2023	2024
2426	2252	21	20	9	2	0.4%	0.1%

Figure 5: Number of suspected and confirmed cases of Yellow Fever, Nigeria, weeks 1 – 39, 2024

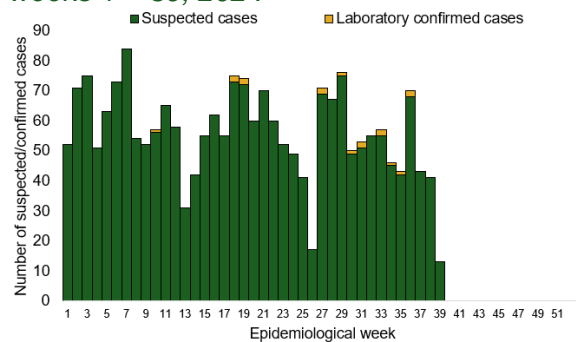
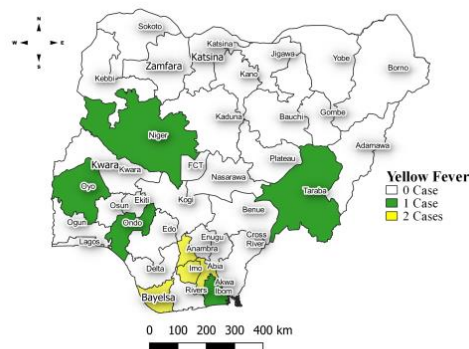


Figure 6: Location of suspected cases of Yellow Fever by States, Nigeria, week 39, 2024



### Key points

- There were 13 suspected cases of Yellow Fever (YF) reported from 12 LGAs in nine states. There was no laboratory confirmed case and no death was recorded.

### Actions

#### To date:

- National YF multi-partner Technical Working Group (TWG) continues to coordinate activities across states.
- Conducted dynamic risk assessment to guide overall preparedness and response strategies.
- Provided off-site support to states to Ondo and Bayelsa states with confirmed cases
- Harmonizing surveillance and laboratory data
- Regular sample testing at the regional reference laboratories
- Coordination of yellow fever sample management and transportation from all states to the regional reference laboratory

## Cholera

### Week 39

Suspected cases	Confirmed cases	Deaths	Number of States and LGAs affected
1452	42	73	State: 16 LGA: 37

### Year to date (week 1 – 39)

Suspected cases		Confirmed cases		Deaths		CFR	
2023	2024	2023	2024	2023	2024	2023	2024
3392	13985	45	317	84	518	2.5%	3.7%

Figure 7: Number of suspected and confirmed cases of Cholera, Nigeria, weeks 1 – 39, 2024

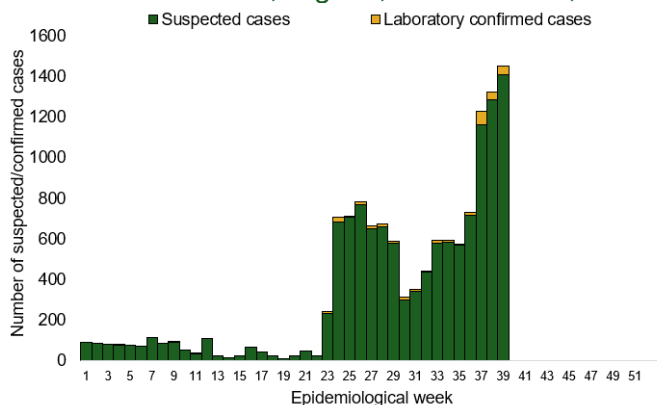
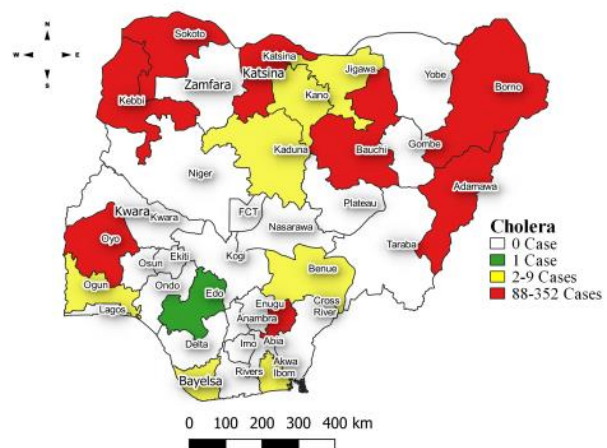


Figure 8: Location of suspected cases of Cholera by State, Nigeria, week 39, 2024



## Key points

- There were 1452 suspected cases of Cholera reported from 37 LGAs in 16 states. There were seven laboratory confirmed cases and 28 deaths were recorded.

## Actions To date

- National Cholera Multi-Sectoral Technical Working Group (TWG) is monitoring all states and supporting affected states.
- Activated the National Emergency Operating Centre (EOC) to monitor responses activities in all affected states
- On-site support in 9 states Lagos, Bayelsa, Abia, Zamfara, Bauchi, Katsina, Cross River, Ebonyi and Rivers
- Develop priority areas for multi-sectoral intervention (Hotspots mapping)

## Measles

### Week 39

Suspected cases	Confirmed cases	Deaths	Number of States and LGAs affected
108	19	0	State: 22 LGA: 71

### Year to date (week 1 – 39)

Suspected cases		Confirmed cases		Deaths		CFR	
2023	2024	2023	2024	2023	2024	2023	2024
17819	18045	1662	1992	107	118	0.6%	0.7%

Figure 9: Number of suspected and confirmed cases of Measles, Nigeria, weeks 1 – 39, 2024.

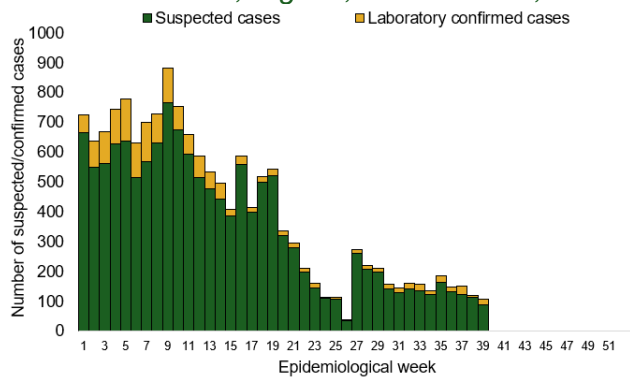
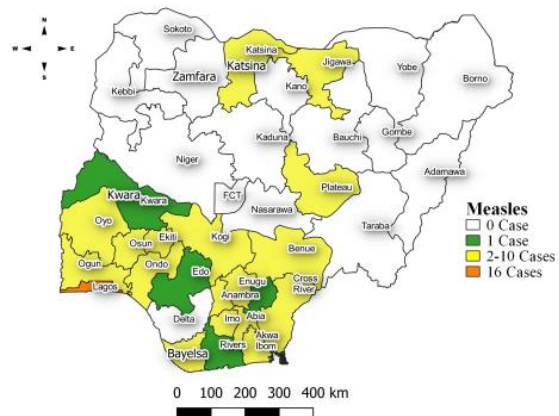


Figure 10: Location of suspected cases of Measles by State, Nigeria, week 39, 2024



### Key points

- There were 187 suspected cases of Measles reported from 111 LGAs in 26 states and FCT. There were 23 laboratory confirmed cases and no death was recorded.

### Actions

#### To date

- National Measles TWG is closely monitoring measles surveillance data and providing feedback to relevant agencies and development partners.
- Supported NPHCDA in the pre-implementation and implementation of 2024 Integrated Supplementary Immunization Activities (SIA)
- Distribution of Measles and Rubella Surveillance Guidelines:
- Supported the validation of the National Measles Elimination Strategic Plan (2019–2028) workshop
- Validated the Measles Outbreak Preparedness and Response (MOBR) Training Materials to standardize training content and materials for outbreak preparedness

## Mpox

### Week 39

Suspected cases	Confirmed cases	Deaths	Number of States and LGAs affected
27	1	0	State: 4 LGA: 10

### Year to date (week 1 – 39)

Suspected cases		Confirmed cases		Deaths		CFR	
2023	2024	2023	2024	2023	2024	2023	2024
928	1061	80	65	2	0	0.2%	0%

Figure 11: Number of suspected and confirmed cases of Mpox, Nigeria, weeks 1 – 39, 2024.

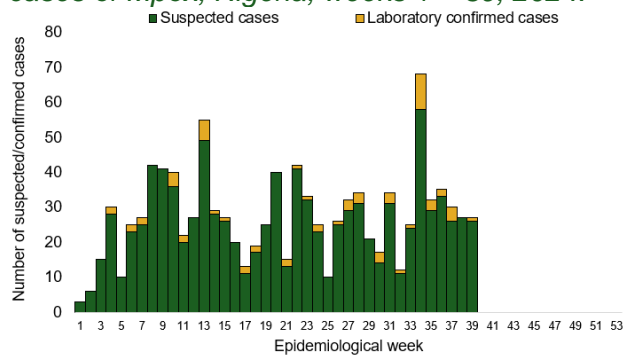
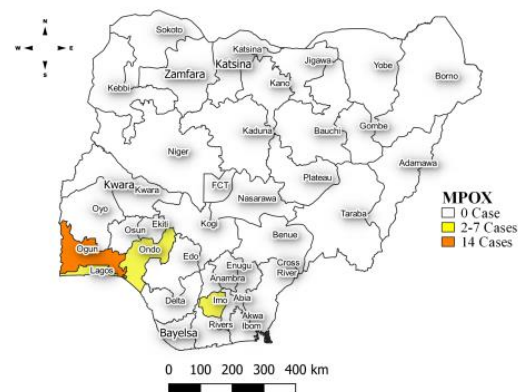


Figure 12: Location of suspected cases of Mpox by State, Nigeria, week 39, 2024



### Key points

- There were 27 suspected cases of Mpox reported from ten LGAs in four states. There was one laboratory confirmed case and no death was recorded.

### Actions To date

- Mpox Incident Management System activated to coordinate response activities
- Supported training of state Epidemiologist and DSNO with surveillance support staff
- Optimisation of 6 laboratories for Mpox testing and supported remote capacity building of laboratory staff at the Molecular Laboratories
- Conducted capacity building of health educators on Mpox RCCE and Content development for RCCE materials
- Supported the coordination of mpox research (UKPHRST/ NCDC study on Mpox collaborative study)



## Acute Flaccid Paralysis (AFP)

### Week 39

Suspected cases	Confirmed cases	Deaths	Number of States and LGAs affected
70	0	0	State: 23 LGA: 54

### Year to date (week 1 – 39)

Suspected cases		Confirmed cases		Deaths		CFR	
2023	2024	2023	2024	2023	2024	2023	2024
5148	4960	0	0	0	0	0%	0%

Figure 13: Number of suspected and confirmed cases of AFP, Nigeria, weeks 1 – 39, 2023

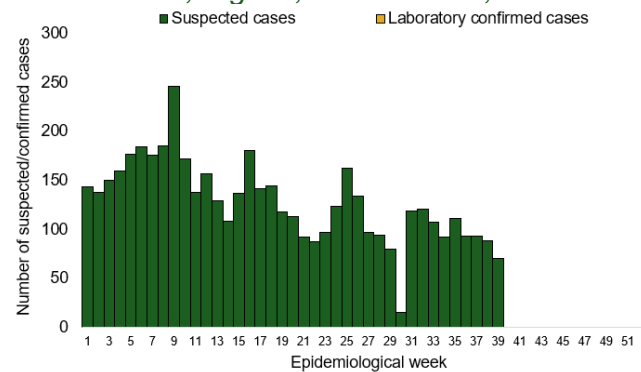
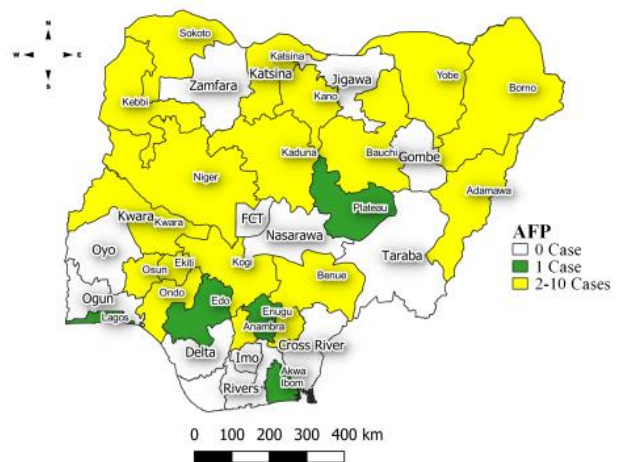


Figure 14: Location of suspected cases of AFP by State, Nigeria, week 39, 2024



### Key points

- There were 70 suspected cases of AFP reported from 54 LGAs in 23 states. There was no laboratory confirmed case and no death was recorded.

## National Influenza Sentinel Surveillance

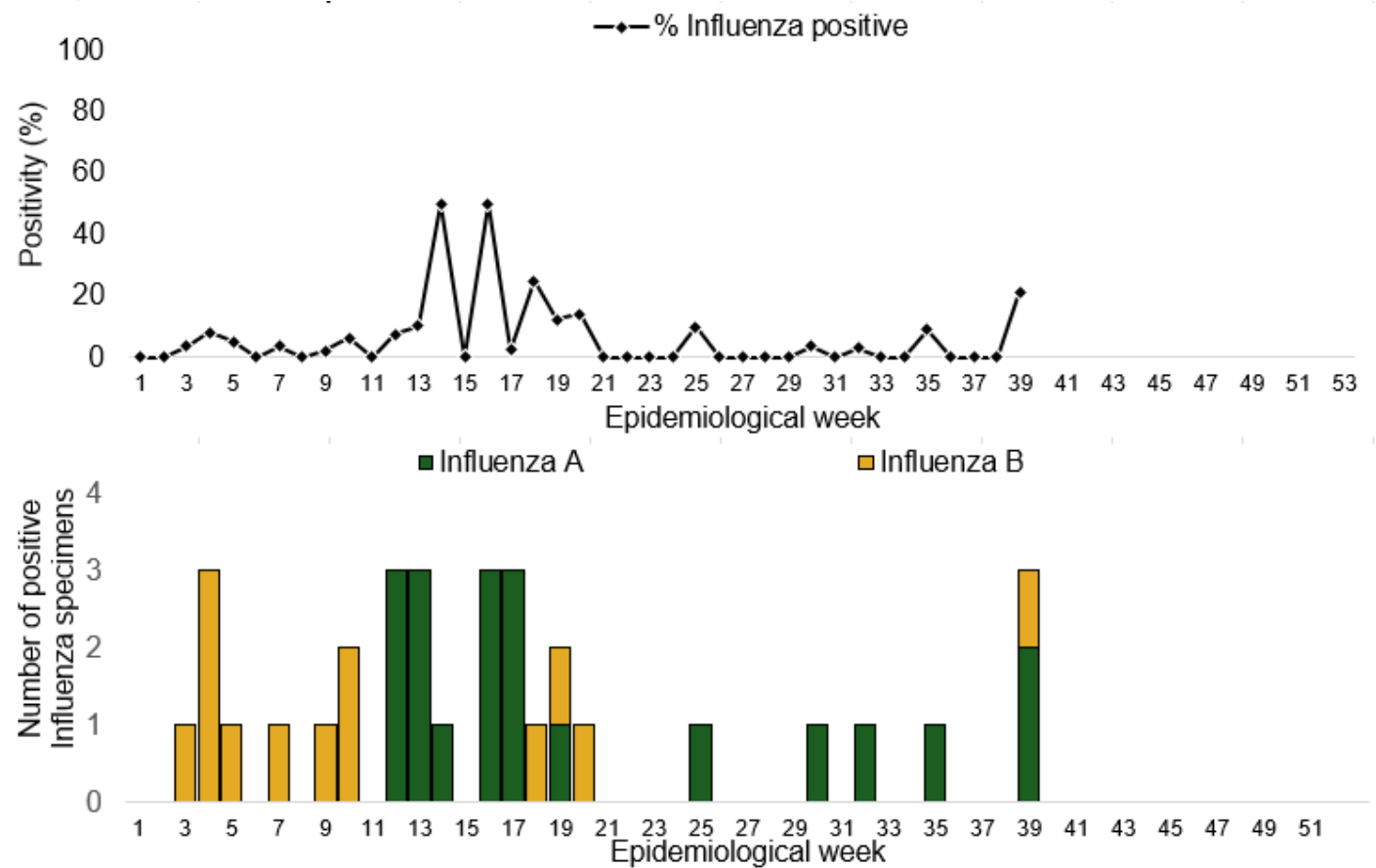
### Week 39

Suspected Cases	Confirmed Cases	Confirmed Case by type	
		Influenza A	Influenza B
14	3	2	1

### Year to date (week 1 – 39)

Suspected cases	Total Confirmed Cases	Confirmed cases by type	
622	33	Influenza A 20	Influenza B 13

Figure 15: Number of influenza positive specimens by type and percentage positive by epidemiological week, 2024.



## Coronavirus Disease (COVID-19)

### Week 39

Suspected cases	Confirmed cases	Deaths	Number of States and LGAs affected
10	0	0	State: 1 LGA: 1

### Year to date (Week 1- 39)

Suspected cases		Confirmed cases		Deaths		CFR	
2023	2024	2023	2024	2023	2024	2023	2024
56312	1749	6220	804	181	1	0.3%	0.1%

Figure 16: Epidemic curve of confirmed cases of COVID-19, Nigeria, week 1 - 39, 2024

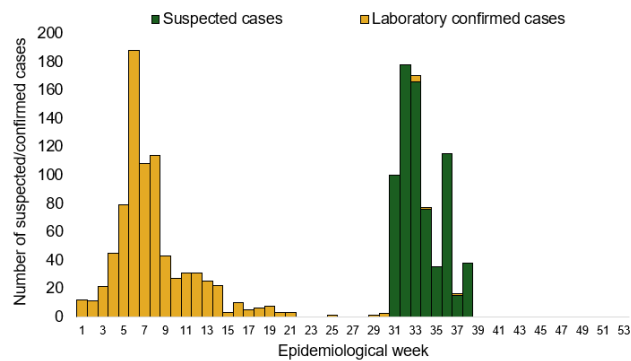
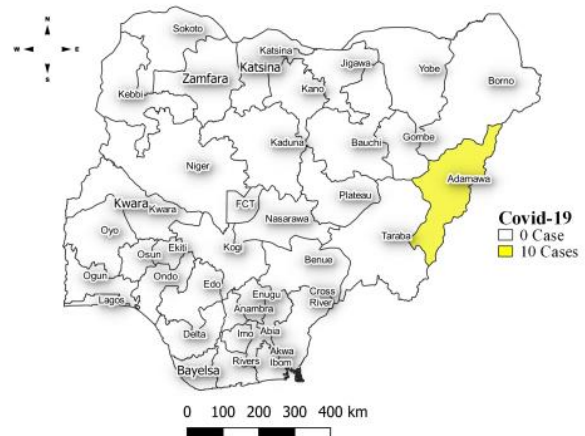


Figure 17: Location of suspected cases of COVID-19 by State, Nigeria, as at week 39, 2024



### Key points

- There were ten suspected cases of Covid-19 reported from one LGA in Adamawa state. There was no laboratory confirmed case and no death was recorded.

### Actions To date

- Follow up with the Lab Data team to ensure Data entry on SORMAS
- Harmonization meeting of Covid-19 and National influenza Sentinel Sites
- Enhanced surveillance activity to encourage test rates
- Coordinate training sessions for surveillance officers on proper data entry protocols for SORMAS.
- Implement regular site visits to verify data quality and compliance with harmonization protocols.

## Diphtheria

### Week 39

Suspected cases	Confirmed cases	Deaths	Number of States and LGAs affected
164	57	4	State: 6 LGA: 17

### Year to date (week 1 – 39)

Suspected cases		Confirmed cases		Deaths		CFR	
2023	2024	2023	2024	2023	2024	2023	2024
14096	16245	8400	10168	626	442	4.4%	2.7%

Figure 18: Number of suspected and confirmed cases of Diphtheria, Nigeria, weeks 1 – 39, 2024

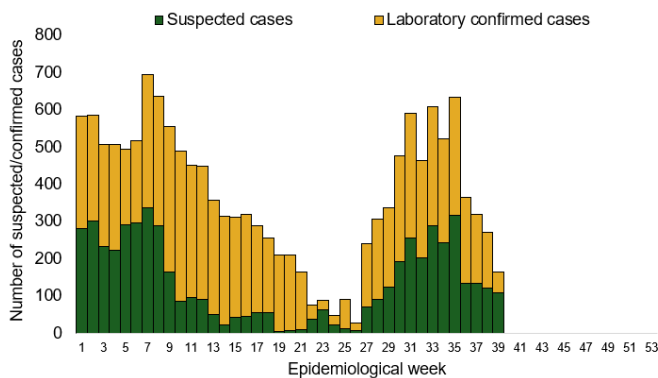
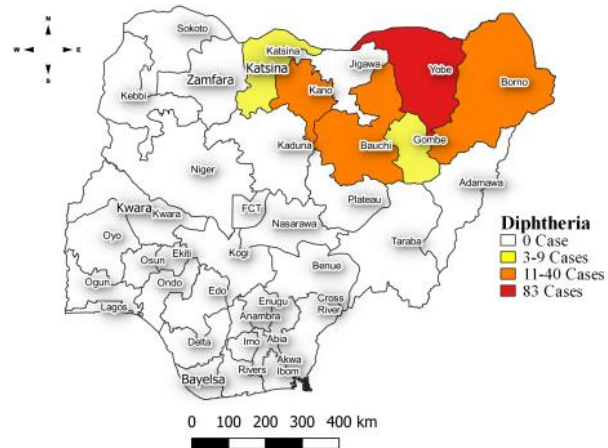


Figure 19: Location of suspected cases of Diphtheria by State, Nigeria, week 39, 2024



### Key points

- There were 164 suspected cases of Diphtheria reported from 17 LGAs in six states. There were 57 confirmed cases and four deaths were recorded.

### Actions To date

- National Diphtheria Technical Working Group (TWG) is monitoring activities in all states.
- Developed Diphtheria surveillance and outbreak response guidelines
- Established Diphtheria laboratory testing network across state
- Conducted case management and IPC training for healthcare workers involved in Diphtheria case management
- Supported NPHCDA in the Implemented reactive mass vaccinations campaign in affected states across states

## Event Based Surveillance (EBS)

### Week 39

#### Key points

##### For the reporting week 39

- 134 Calls were successfully routed to agents and answered
- 0 calls not routed to agents (Failed call)
- 134 total number of calls (successful and failed)
- 0 number of SMS received
- 0 WhatsApp/live chat messages received
- The percentage of failed to total inbound calls 0.0%
- 3 signals picked and escalated to the respective states
  - 2 confirmed cholera cases in Maiduguri, Borno State
  - Flood displaces 82 communities in Niger State
  - 4 deaths from acute diarrhoea in Gujba LGA, Yobe State.

##### For week 1 – 39

- 4,624 calls were successfully routed to agents and answered
- 206 calls not routed to agents (Failed call)
- 4,833 total inbound calls recorded
- The Percentage of failed to total inbound calls: 4.3%
- 72 Signals picked and escalated

#### Categories of Calls

- General inquiries 65
- Hoax call and others 39
- Report of health conditions 2
- Inquiry on Cholera 16
- Health Declaration form-related queries 5
- Inquiries on Mpox 7

Figure 20: Number of successful and failed calls, weeks 1 – 39, 2024

