



NIGERIA CENTRE FOR DISEASE CONTROL AND PREVENTION

Nigeria Centre for Disease Control and Prevention

Protecting the health of Nigerians

# Weekly Epidemiological Report

Week 37: 9<sup>th</sup> – 15<sup>th</sup> September 2024

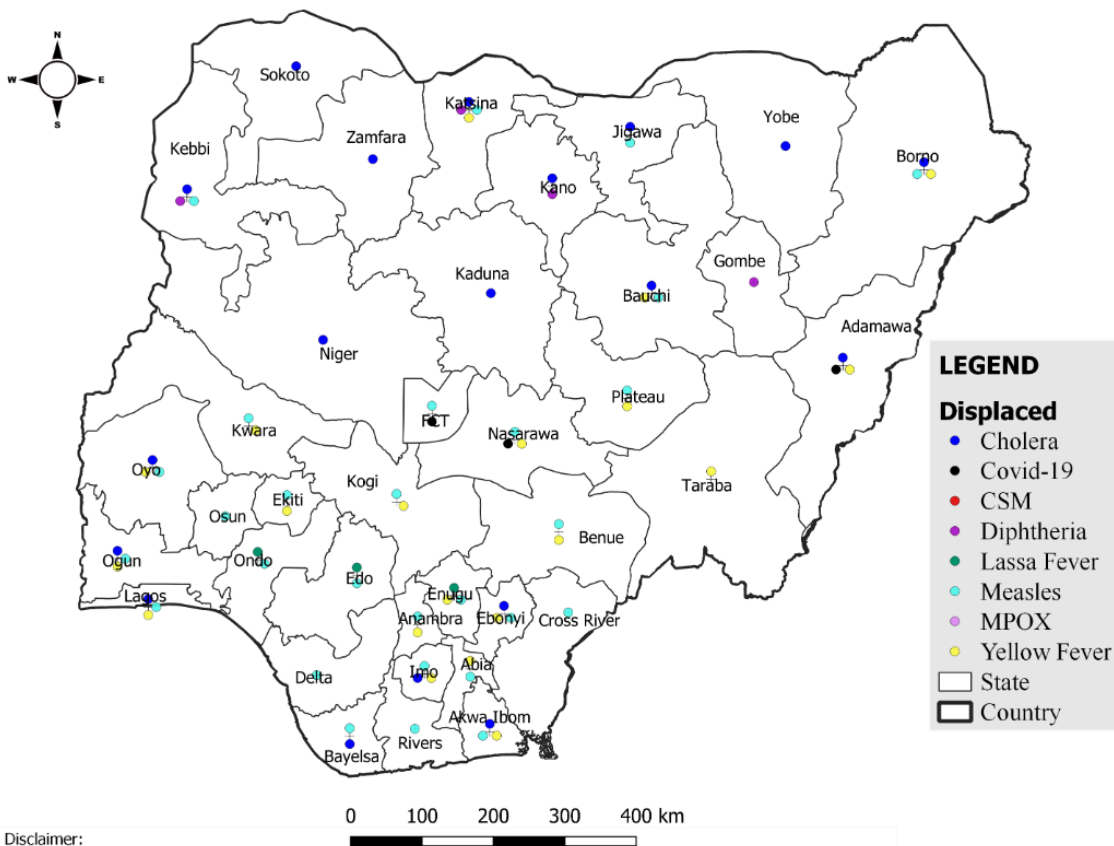
## Summary of Incidents

### Ongoing incidents

2

Ongoing incidents are defined as confirmed cases where a national EOC or equivalent has been activated (Cholera and Diphtheria)

Other incidents are those with confirmed cases for which EOC is not activated



## Summary

Week 37: 9<sup>th</sup> – 15<sup>th</sup> September 2024

Lassa Fever <sup>1,2</sup>	Cerebrospinal Meningitis (CSM) <sup>1,4</sup>	Yellow Fever <sup>1,4</sup>
115 Suspected case(s)	0 Suspected case(s)	43 Suspected case(s)
5 Confirmed case(s)	0 Confirmed case(s)	0 Confirmed case(s)
1 Death(s)	0 Death(s)	0 Death(s)
Cholera <sup>1,4</sup>	Measles <sup>1,4</sup>	Mpox <sup>1,4</sup>
1228 Suspected case(s)	151 Suspected case(s)	30 Suspected case(s)
68 Confirmed case(s)	29 Confirmed case(s)	4 Confirmed case(s)
73 Death(s)	0 Death(s)	0 Death(s)
Acute Flaccid Paralysis (AFP) <sup>1,4</sup>	National Sentinel influenza surveillance <sup>5</sup>	Coronavirus Disease <sup>1,</sup>
93 Suspected case(s)	10 Suspected case(s)	16 Suspected case(s)
0 Confirmed case(s)	0 Confirmed case(s)	1 Confirmed case(s)
0		0 Death(s)
Diphtheria <sup>1,4</sup>		
317 Suspected case(s)		
183 Confirmed case(s)		
12 Death(s)		

1. Information for this disease was retrieved from the Technical Working Group and Situation Reports
2. Case Fatality Rate (CFR) for this disease is reported for confirmed cases only.
3. CFR for this disease is reported for total cases i.e. suspected + confirmed.
4. Information for sentinel influenza was retrieved from the laboratory.

## Lassa Fever

### Week 37

Suspected cases	Confirmed cases	Deaths	Number of States and LGAs affected
115	5	1	State: 12 + FCT LGA: 24

### Year to date (week 1 – 37)

Suspected cases		Confirmed cases		Deaths		CFR	
2023	2024	2023	2024	2023	2024	2023	2024
7352	8251	1068	1005	181	170	16.9%	16.9%

Figure 1: Number of suspected and confirmed cases of Lassa Fever, Nigeria, Weeks 1 – 37, 2024

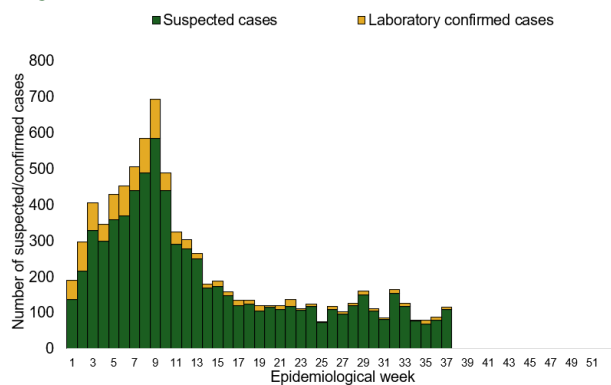
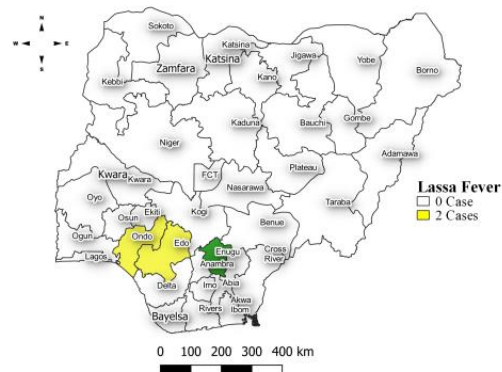


Figure 2: Location of **confirmed** cases of Lassa Fever by State, Nigeria, week 37, 2024



## Key points

- There were 115 suspected cases of Lassa Fever reported from 24 LGAs in 12 states and FCT. There were five laboratory confirmed cases and one death was recorded.

## Actions

### To date:

- National Lassa fever multi-partner, multi-sectoral Technical Working Group (TWG) continues to coordinate the response activities at all levels.
- Participated in the Joint Review of National Red Cross Society 2024 Lassa fever DREF Operation
- Participated in the testing phase of the Human Centered Design (HCD) from Farm to Market
- Circulate the final AAR report to stakeholders

## Cerebrospinal Meningitis (CSM)

### Week 37

Suspected cases	Confirmed cases	Deaths	Number of States and LGAs affected
0	0	0	State: 0 LGA: 0

### Year to date (week 1 – 37)

Suspected cases		Confirmed cases		Deaths		CFR	
2023	2024	2023	2024	2023	2024	2023	2024
1952	3029	73	50	75	128	3.8%	4.2%

Figure 3: Number of suspected and confirmed cases of CSM, Nigeria, weeks 1 – 37, 2024

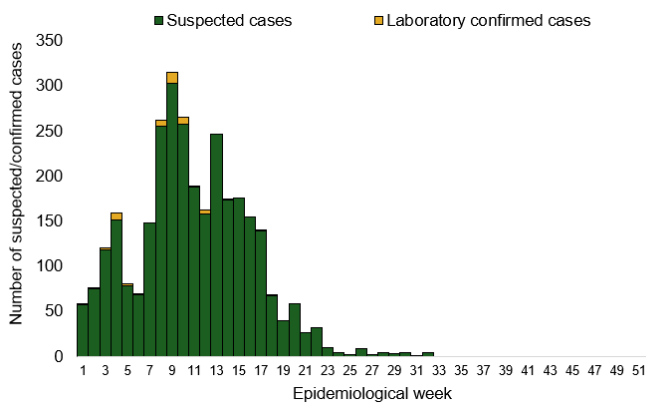
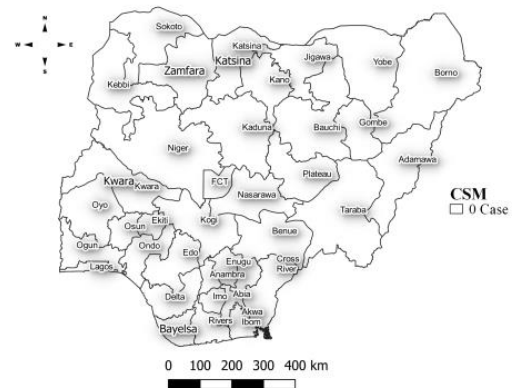


Figure 4: Location of suspected cases of CSM by State, Nigeria, week 37, 2024



### Key points

- National CSM TWG meets weekly to review reports from states and plan appropriately.
- Providing offsite/onsite support to states and follow up for daily reporting and progress with response activities
- Implementation of CSM reactive vaccination campaign in high burden LGAs/Wards in Jigawa state led by NPHCDA
- Activated Multi-sectoral State-level Emergency Operation Centres (EOCs) in Jigawa and Yobe, Katsina, Bauchi and Gombe state

## Yellow Fever

### Week 37

Suspected cases	Confirmed cases	Deaths	Number of States and LGAs affected
43	0	0	State: 20 LGA: 39

### Year to date (week 1 – 37)

Suspected cases		Confirmed cases		Deaths		CFR	
2023	2024	2023	2024	2023	2024	2023	2024
2289	2198	21	20	8	2	0.3%	0.1%

Figure 5: Number of suspected and confirmed cases of Yellow Fever, Nigeria, weeks 1 – 37, 2024

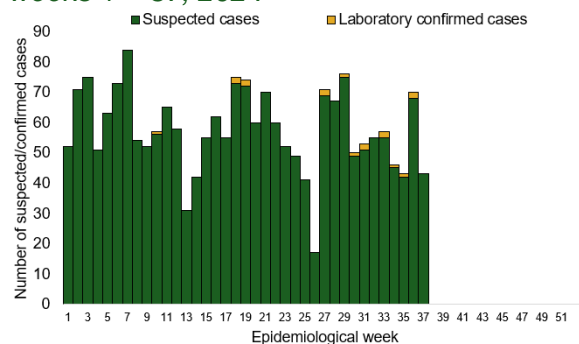
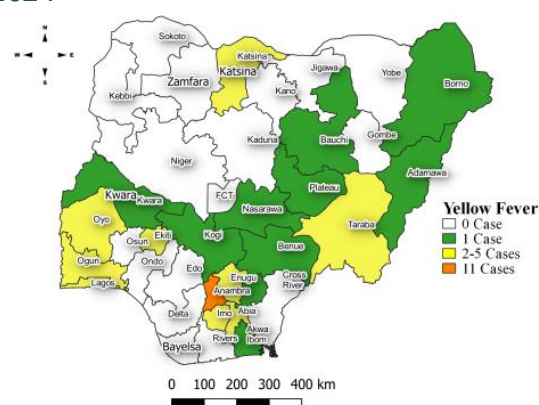


Figure 6: Location of suspected cases of Yellow Fever by States, Nigeria, week 37, 2024



### Key points

- There were 43 suspected cases of Yellow Fever (YF) reported from 39 LGAs in 20 states. There was no laboratory confirmed case and no death was recorded.

### Actions

#### To date:

- National YF multi-partner Technical Working Group (TWG) continues to coordinate activities across states.
- Conducted dynamic risk assessment to guide overall preparedness and response strategies.
- Provided off-site support to states to Ondo and Bayelsa states with confirmed cases
- Harmonizing surveillance and laboratory data
- Regular sample testing at the regional reference laboratories
- Coordination of yellow fever sample management and transportation from all states to the regional reference laboratory

## Cholera

### Week 37

Suspected cases	Confirmed cases	Deaths	Number of States and LGAs affected
1228	68	73	State: 19 LGA: 52

### Year to date (week 1 – 37)

Suspected cases		Confirmed cases		Deaths		CFR	
2023	2024	2023	2024	2023	2024	2023	2024
3270	11210	45	236	84	394	2.6%	3.5%

Figure 7: Number of suspected and confirmed cases of Cholera, Nigeria, weeks 1 – 37, 2024

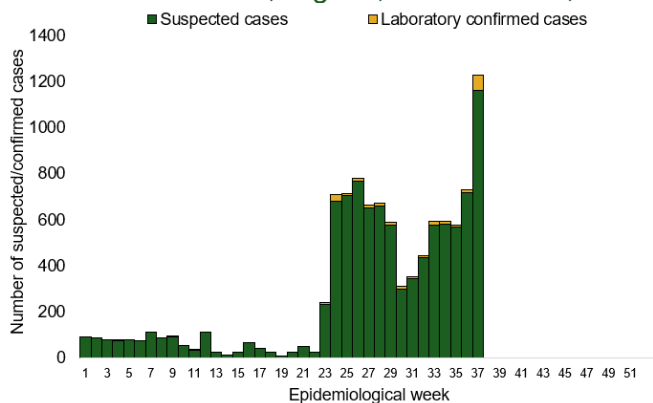
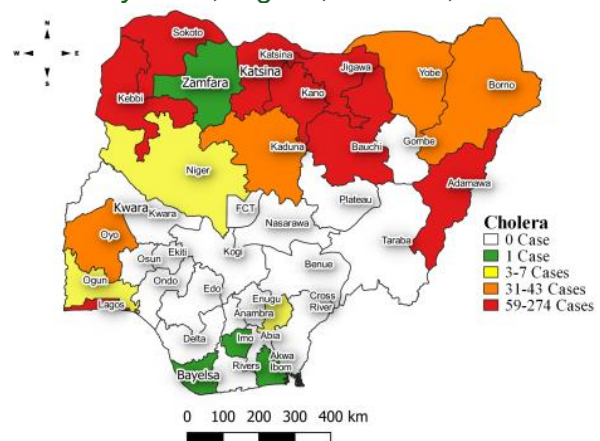


Figure 8: Location of suspected cases of Cholera by State, Nigeria, week 37, 2024



### Key points

- There were 1228 suspected cases of Cholera reported from 52 LGAs in 19 states. There were 68 laboratory confirmed cases and 73 deaths were recorded.

### Actions To date

- National Cholera Multi-Sectoral Technical Working Group (TWG) is monitoring all states and supporting affected states.
- Activated the National Emergency Operating Centre (EOC) to monitor responses activities in all affected states
- On-site support in 9 states Lagos, Bayelsa, Abia, Zamfara, Bauchi, Katsina, Cross River, Ebonyi and Rivers
- Develop priority areas for multi-sectoral intervention (Hotspots mapping)

## Measles

### Week 37

Suspected cases	Confirmed cases	Deaths	Number of States and LGAs affected
151	29	0	State: 27 + FCT LGA: 102

### Year to date (week 1 – 37)

Suspected cases		Confirmed cases		Deaths		CFR	
2023	2024	2023	2024	2023	2024	2023	2024
17542	17816	1596	1964	103	118	0.6%	0.7%

Figure 9: Number of suspected and confirmed cases of Measles, Nigeria, weeks 1 – 37, 2024.

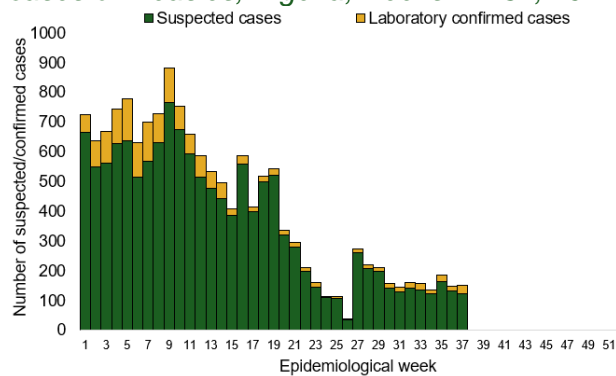
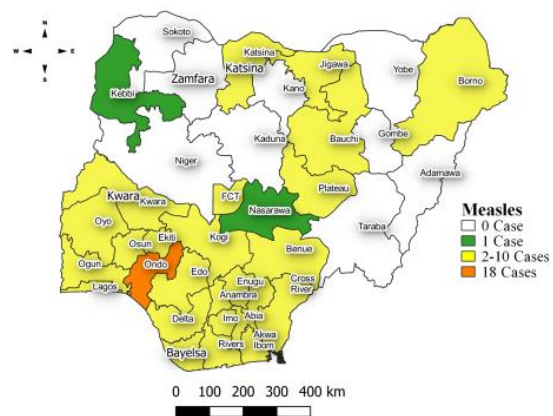


Figure 10: Location of suspected cases of Measles by State, Nigeria, week 37, 2024



### Key points

- There were 151 suspected cases of Measles reported from 102 LGAs in 27 states and FCT. There were 29 laboratory confirmed cases and no death was recorded.

### Actions

#### To date

- National Measles TWG is closely monitoring measles surveillance data and providing feedback to relevant agencies and development partners.
- Supported NPHCDA in the pre-implementation and implementation of 2024 Integrated Supplementary Immunization Activities (SIA)
- Distribution of Measles and Rubella Surveillance Guidelines:
- Supported the validation of the National Measles Elimination Strategic Plan (2019–2028) workshop
- Validated the Measles Outbreak Preparedness and Response (MOBR) Training Materials to standardize training content and materials for outbreak preparedness



## Mpox

### Week 37

Suspected cases	Confirmed cases	Deaths	Number of States and LGAs affected
30	4	0	State: 6 LGA: 17

### Year to date (week 1 – 37)

Suspected cases		Confirmed cases		Deaths		CFR	
2023	2024	2023	2024	2023	2024	2023	2024
928	1007	80	64	2	0	0.2%	0%

Figure 11: Number of suspected and confirmed cases of Mpox, Nigeria, weeks 1 – 37, 2024.

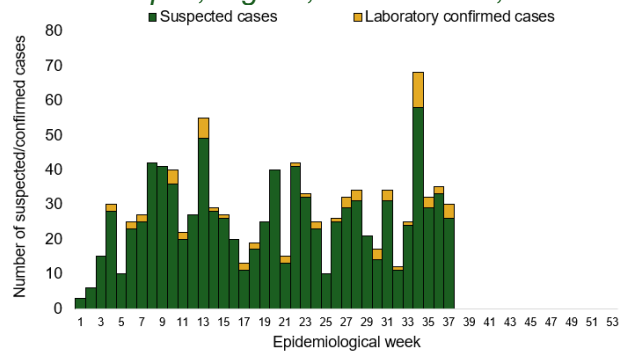
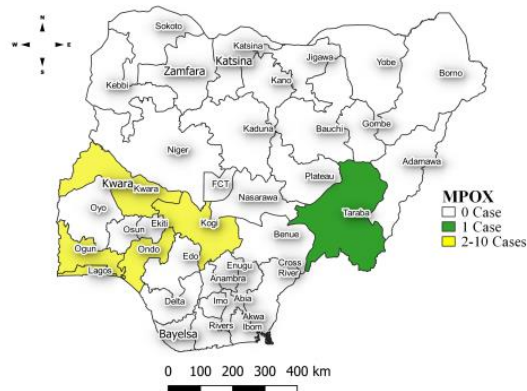


Figure 12: Location of suspected cases of Mpox by State, Nigeria, week 37, 2024



### Key points

- There were 30 suspected cases of Mpox reported from 17 LGAs in six states. There were four laboratory confirmed cases and no death was recorded.

### Actions To date

- Mpox Incident Management System activated to coordinate response activities
- Supported training of state Epidemiologist and DSNO with surveillance support staff
- Optimisation of 6 laboratories for Mpox testing and supported remote capacity building of laboratory staff at the Molecular Laboratories
- Conducted capacity building of health educators on Mpox RCCE and Content development for RCCE materials
- Supported the coordination of mpox research (UKPHRST/ NCDC study on Mpox collaborative study)



## Acute Flaccid Paralysis (AFP)

### Week 37

Suspected cases	Confirmed cases	Deaths	Number of States and LGAs affected
93	0	0	State: 27 LGA: 77

### Year to date (week 1 – 37)

Suspected cases		Confirmed cases		Deaths		CFR	
2023	2024	2023	2024	2023	2024	2023	2024
4872	4802	0	0	0	0	0%	0%

Figure 13: Number of suspected and confirmed cases of AFP, Nigeria, weeks 1 – 37, 2023

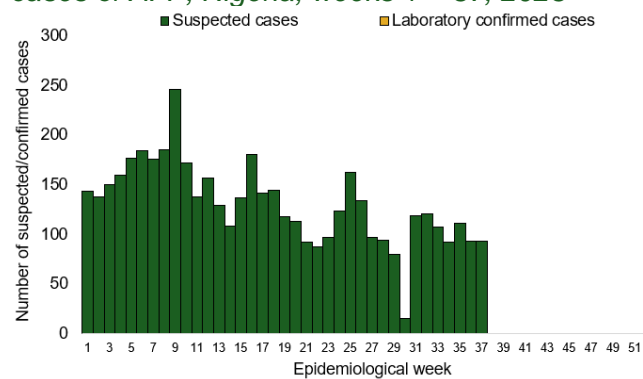
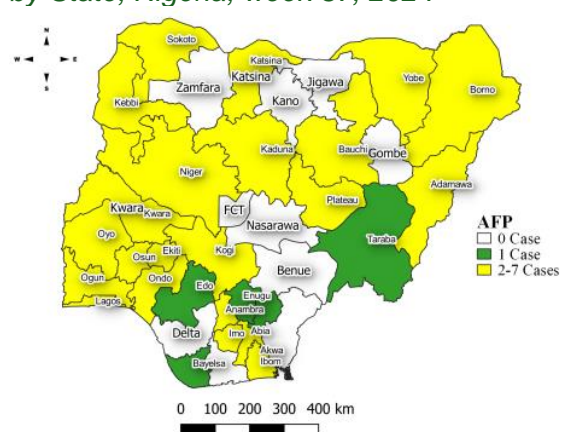


Figure 14: Location of suspected cases of AFP by State, Nigeria, week 37, 2024



### Key points

- There were 93 suspected cases of AFP reported from 77 LGAs in 27 states. There was no laboratory confirmed case and no death was recorded.

## National Influenza Sentinel Surveillance

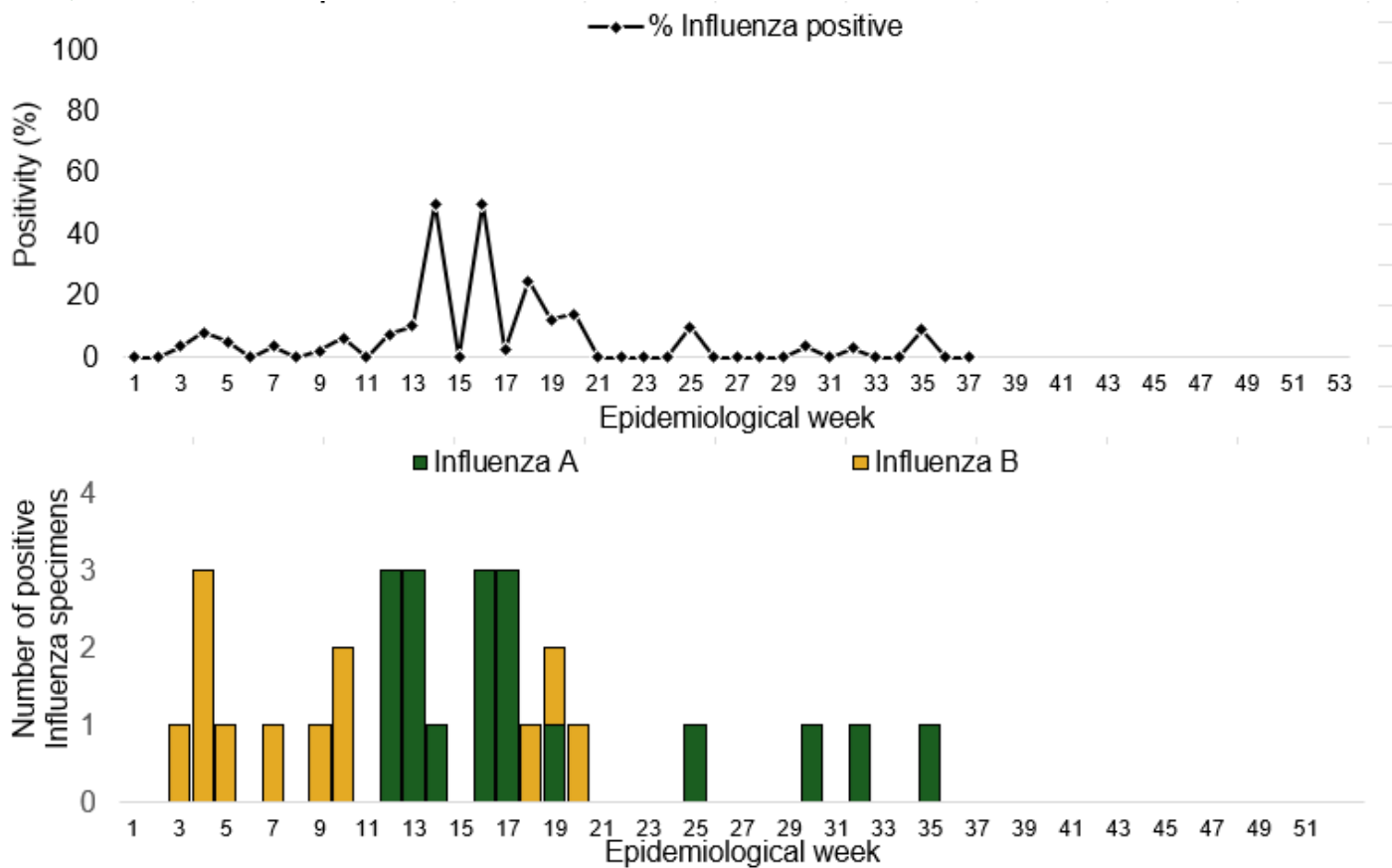
### Week 37

Suspected Cases	Confirmed Cases	Confirmed Case by type	
		Influenza A	Influenza B
10	0	0	0

### Year to date (week 1 – 37)

Suspected cases	Total Confirmed Cases	Confirmed cases by type	
607	30	Influenza A 18	Influenza B 12

Figure 15: Number of influenza positive specimens by type and percentage positive by epidemiological week, 2024.



## Coronavirus Disease (COVID-19)

### Week 37

Suspected cases	Confirmed cases	Deaths	Number of States and LGAs affected
16	1	0	State: 2 + FCT LGA: 4

### Year to date (Week 1- 37)

Suspected cases		Confirmed cases		Deaths		CFR	
2023	2024	2023	2024	2023	2024	2023	2024
448065	1701	3904	804	181	1	0.04%	0.1%

Figure 16: Epidemic curve of confirmed cases of COVID-19, Nigeria, week 1 - 37, 2024

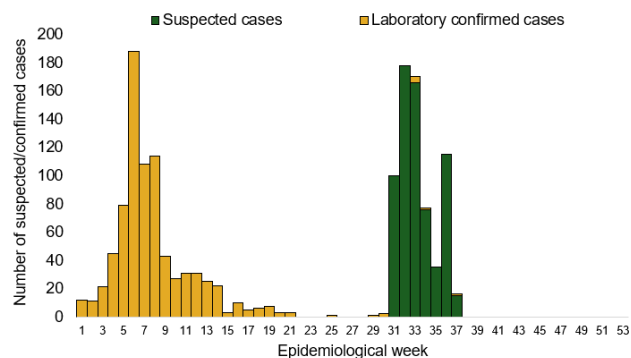
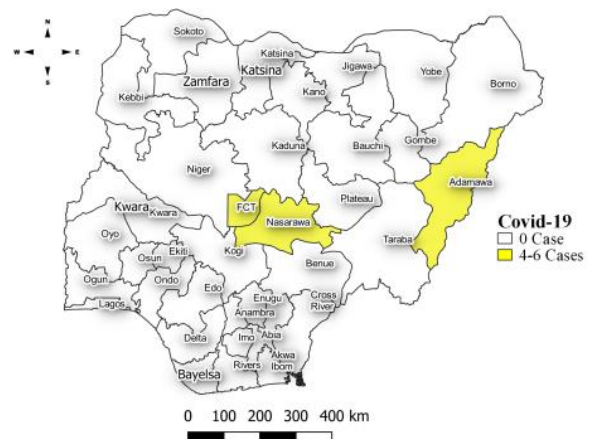


Figure 17: Location of suspected cases of COVID-19 by State, Nigeria, as at week 37, 2024



### Key points

- There were 16 suspected cases of Covid-19 reported from four LGAs in two states and FCT. There was one laboratory confirmed case and no death was recorded.

### Actions

#### To date

- Follow up with the Lab Data team to ensure Data entry on SORMAS
- Harmonization meeting of Covid-19 and National influenza Sentinel Sites
- Enhanced surveillance activity to encourage test rates
- Coordinate training sessions for surveillance officers on proper data entry protocols for SORMAS.
- Implement regular site visits to verify data quality and compliance with harmonization protocols.

## Diphtheria

### Week 37

Suspected cases	Confirmed cases	Deaths	Number of States and LGAs affected
317	183	12	State: 4 LGA: 29

### Year to date (week 1 – 37)

Suspected cases		Confirmed cases		Deaths		CFR	
2023	2024	2023	2024	2023	2024	2023	2024
12509	15812	7396	9963	564	429	4.5%	2.7%

Figure 18: Number of suspected and confirmed cases of Diphtheria, Nigeria, weeks 1 – 37, 2024

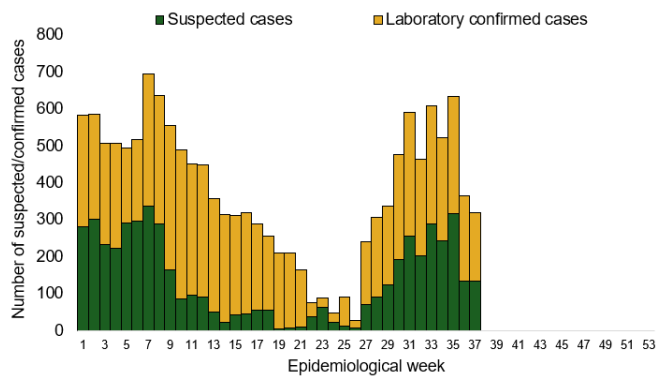
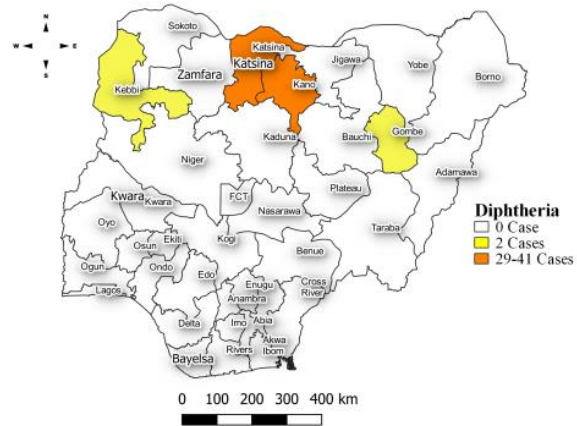


Figure 19: Location of suspected cases of Diphtheria by State, Nigeria, week 37, 2024



### Key points

- There were 317 suspected cases of Diphtheria reported from 29 LGAs in four states. There were 183 confirmed cases and 12 deaths were recorded.

### Actions To date

- National Diphtheria Technical Working Group (TWG) is monitoring activities in all states.
- Developed Diphtheria surveillance and outbreak response guidelines
- Established Diphtheria laboratory testing network across state
- Conducted case management and IPC training for healthcare workers involved in Diphtheria case management
- Supported NPHCDA in the Implemented reactive mass vaccinations campaign in affected states across states

## Event Based Surveillance (EBS)

### Week 37

#### Key points

##### For the reporting week 37

- 195 Calls were successfully routed to agents and answered
- 2 calls not routed to agents (Failed call)
- 197 total number of calls (successful and failed)
- 0 number of SMS received
- 0 WhatsApp/live chat messages received
- The percentage of failed to total inbound calls 1.0%
- 3 signals picked and escalated to the respective states
  - Flooding in Borno state; 30 confirmed dead and over 1 million people affected
  - 16 snake bites recorded at IDP camp in Benue state
  - Possibility of cholera outbreak, lack of food and security in Borno state

##### For week 1 – 37

- 4,415 calls were successfully routed to agents and answered
- 202 calls not routed to agents (Failed call)
- 4617 total inbound calls recorded
- The Percentage of failed to total inbound calls: 4.5%
- 65 Signals picked and escalated

#### Categories of Calls

- General inquiries 90
- Hoax call and others 30
- Enquiries on COVID-19 vaccination certificate 0
- Report of health conditions 21
- Inquiry on Cholera 24
- Health Declaration form-related queries 15
- Inquiries on Diphtheria symptoms, treatment, and Vaccine 0
- Inquiries on Mpox 5
- Inquiries on Mpox vaccine 10
- Covid19 vaccination inquiries 0
- Inquiries on employment 0

Figure 20: Number of successful and failed calls, weeks 1 – 37, 2024

