



NIGERIA CENTRE FOR DISEASE CONTROL AND PREVENTION

Nigeria Centre for Disease Control and Prevention

Protecting the health of Nigerians

Weekly Epidemiological Report

Week 36: 2nd – 8th September 2024

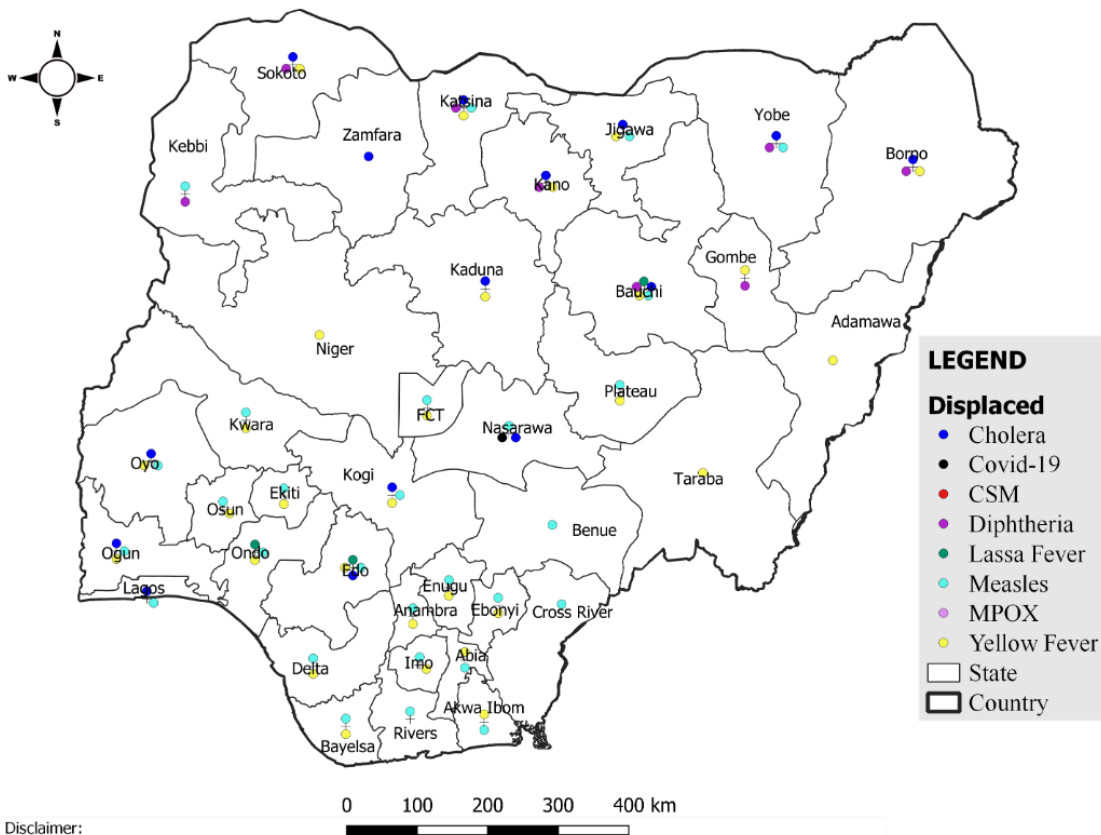
Summary of Incidents

Ongoing incidents

2

Ongoing incidents are defined as confirmed cases where a national EOC or equivalent has been activated (Cholera and Diphtheria)

Other incidents are those with confirmed cases for which EOC is not activated



Summary

Week 36: 2nd – 8th September 2024

Lassa Fever ^{1,2}	Cerebrospinal Meningitis (CSM) ^{1,4}	Yellow Fever ^{1,4}
87 Suspected case(s)	0 Suspected case(s)	70 Suspected case(s)
7 Confirmed case(s)	0 Confirmed case(s)	2 Confirmed case(s)
1 Death(s)	0 Death(s)	0 Death(s)
Cholera ^{1,4}	Measles ^{1,4}	Mpox ^{1,4}
729 Suspected case(s)	148 Suspected case(s)	35 Suspected case(s)
11 Confirmed case(s)	15 Confirmed case(s)	2 Confirmed case(s)
30 Death(s)	0 Death(s)	0 Death(s)
Acute Flaccid Paralysis (AFP) ^{1,4}	National Sentinel influenza surveillance ⁵	Coronavirus Disease ^{1,}
93 Suspected case(s)	7 Suspected case(s)	115 Suspected case(s)
0 Confirmed case(s)	0 Confirmed case(s)	0 Confirmed case(s)
0		0 Death(s)
Diphtheria ^{1,4}		
363 Suspected case(s)		
229 Confirmed case(s)		
9 Death(s)		

- Information for this disease was retrieved from the Technical Working Group and Situation Reports
- Case Fatality Rate (CFR) for this disease is reported for confirmed cases only.
- CFR for this disease is reported for total cases i.e. suspected + confirmed.
- Information for sentinel influenza was retrieved from the laboratory.

Lassa Fever

Week 36

Suspected cases	Confirmed cases	Deaths	Number of States and LGAs affected
87	7	1	State: 10 LGA: 16

Year to date (week 1 – 36)

Suspected cases		Confirmed cases		Deaths		CFR	
2023	2024	2023	2024	2023	2024	2023	2024
7273	8138	1064	1000	181	169	17%	16.9%

Figure 1: Number of suspected and confirmed cases of Lassa Fever, Nigeria, Weeks 1 – 36, 2024

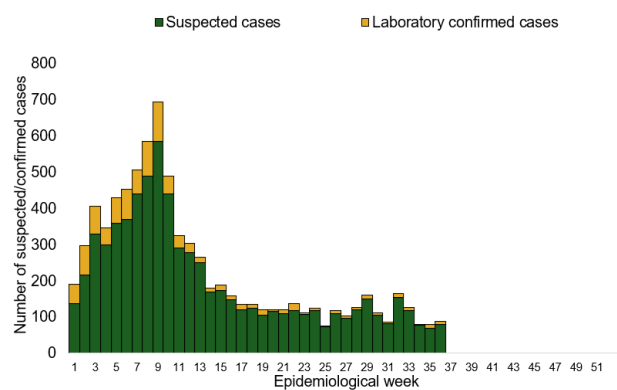
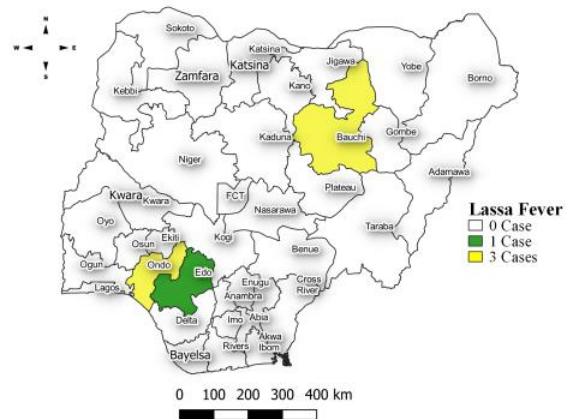


Figure 2: Location of **confirmed** cases of Lassa Fever by State, Nigeria, week 36, 2024



Key points

- There were 87 suspected cases of Lassa Fever reported from 16 LGAs in ten states. There were seven laboratory confirmed cases and one death was recorded.

Actions

To date:

- National Lassa fever multi-partner, multi-sectoral Technical Working Group (TWG) continues to coordinate the response activities at all levels.
- Participated in the Joint Review of National Red Cross Society 2024 Lassa fever DREF Operation
- Participated in the testing phase of the Human Centered Design (HCD) from Farm to Market
- Circulate the final AAR report to stakeholders

Cerebrospinal Meningitis (CSM)

Week 36

Suspected cases	Confirmed cases	Deaths	Number of States and LGAs affected
0	0	0	State: 0 LGA: 0

Year to date (week 1 – 36)

Suspected cases		Confirmed cases		Deaths		CFR	
2023	2024	2023	2024	2023	2024	2023	2024
1947	3029	73	50	75	128	3.9%	4.2%

Figure 3: Number of suspected and confirmed cases of CSM, Nigeria, weeks 1 – 36, 2024

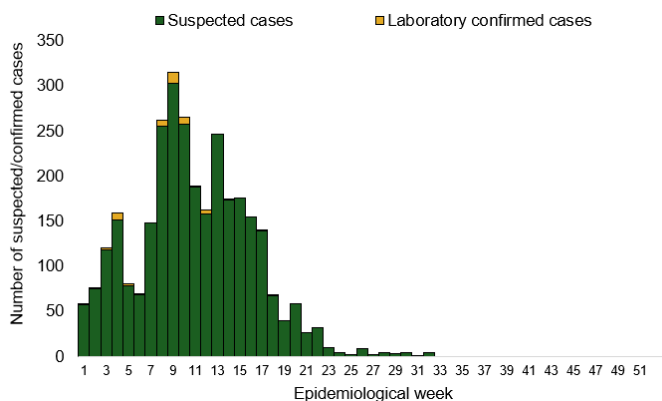
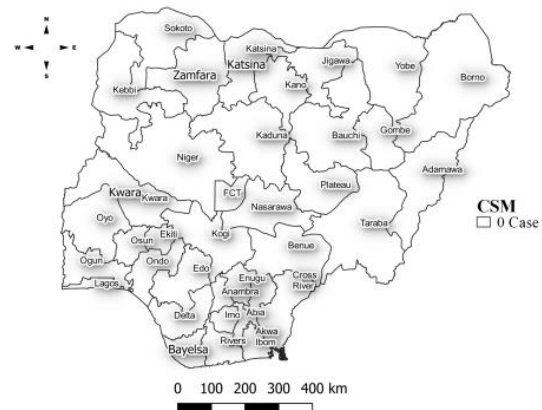


Figure 4: Location of suspected cases of CSM by State, Nigeria, week 36, 2024



Key points

- National CSM TWG meets weekly to review reports from states and plan appropriately.
- Providing offsite/onsite support to states and follow up for daily reporting and progress with response activities
- Implementation of CSM reactive vaccination campaign in high burden LGAs/Wards in Jigawa state led by NPHCDA
- Activated Multi-sectoral State-level Emergency Operation Centres (EOCs) in Jigawa and Yobe, Katsina, Bauchi and Gombe state

Yellow Fever

Week 36

Suspected cases	Confirmed cases	Deaths	Number of States and LGAs affected
70	2	0	State: 28 + FCT LGA: 62

Year to date (week 1 – 36)

Suspected cases		Confirmed cases		Deaths		CFR	
2023	2024	2023	2024	2023	2024	2023	2024
2225	2155	21	20	7	2	0.3%	0.1%

Figure 5: Number of suspected and confirmed cases of Yellow Fever, Nigeria, weeks 1 – 36, 2024

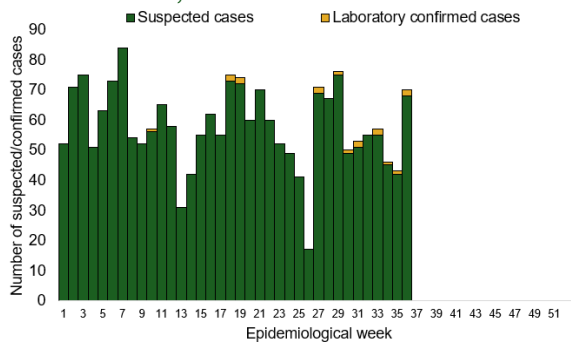
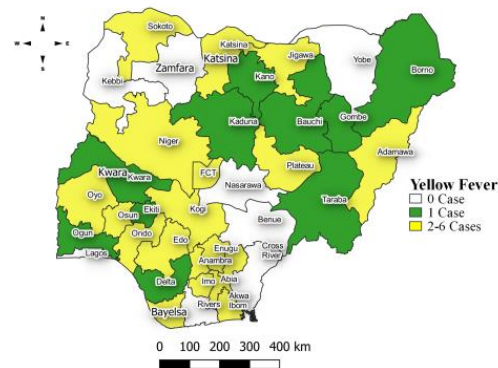


Figure 6: Location of suspected cases of Yellow Fever by States, Nigeria, week 36, 2024



Key points

- There were 70 suspected cases of Yellow Fever (YF) reported from 62 LGAs in 28 states and FCT. There were two laboratory confirmed cases and no death was recorded.

Actions

To date:

- National YF multi-partner Technical Working Group (TWG) continues to coordinate activities across states.
- Conducted dynamic risk assessment to guide overall preparedness and response strategies.
- Provided off-site support to states to Ondo and Bayelsa states with confirmed cases
- Harmonizing surveillance and laboratory data
- Regular sample testing at the regional reference laboratories
- Coordination of yellow fever sample management and transportation from all states to the regional reference laboratory

Cholera

Week 36

Suspected cases	Confirmed cases	Deaths	Number of States and LGAs affected
729	11	30	State: 15 LGA: 39

Year to date (week 1 – 36)

Suspected cases		Confirmed cases		Deaths		CFR	
2023	2024	2023	2024	2023	2024	2023	2024
3216	9982	45	168	84	321	2.6%	3.2%

Figure 7: Number of suspected and confirmed cases of Cholera, Nigeria, weeks 1 – 36, 2024

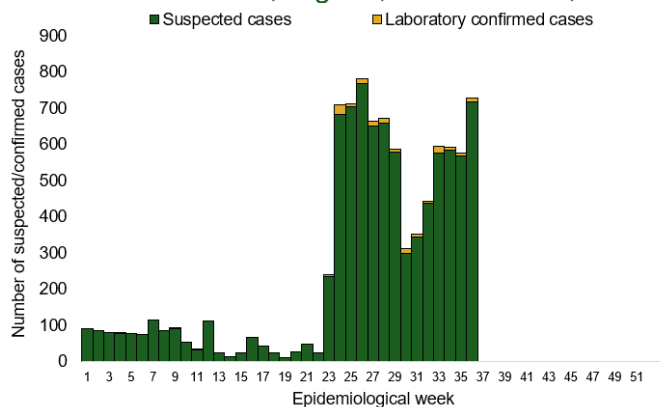
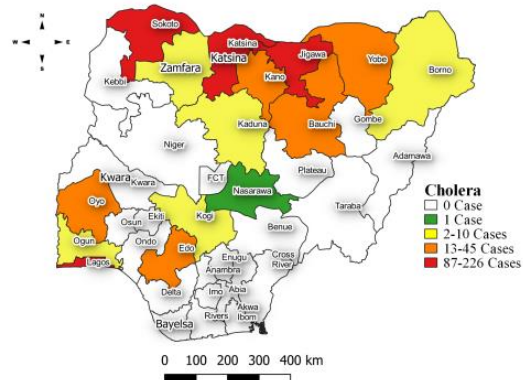


Figure 8: Location of suspected cases of Cholera by State, Nigeria, week 36, 2024



Key points

- There were 729 suspected cases of Cholera reported from 39 LGAs in 15 states. There were 11 laboratory confirmed cases and 30 deaths were recorded.

Actions To date

- National Cholera Multi-Sectoral Technical Working Group (TWG) is monitoring all states and supporting affected states.
- Activated the National Emergency Operating Centre (EOC) to monitor responses activities in all affected states
- On-site support in 9 states Lagos, Bayelsa, Abia, Zamfara, Bauchi, Katsina, Cross River, Ebonyi and Rivers
- Develop priority areas for multi-sectoral intervention (Hotspots mapping)

Measles

Week 36

Suspected cases	Confirmed cases	Deaths	Number of States and LGAs affected
148	15	0	State: 27 + FCT LGA: 116

Year to date (week 1 – 36)

Suspected cases		Confirmed cases		Deaths		CFR	
2023	2024	2023	2024	2023	2024	2023	2024
17413	17665	1577	1935	102	118	0.6%	0.7%

Figure 9: Number of suspected and confirmed cases of Measles, Nigeria, weeks 1 – 36, 2024.

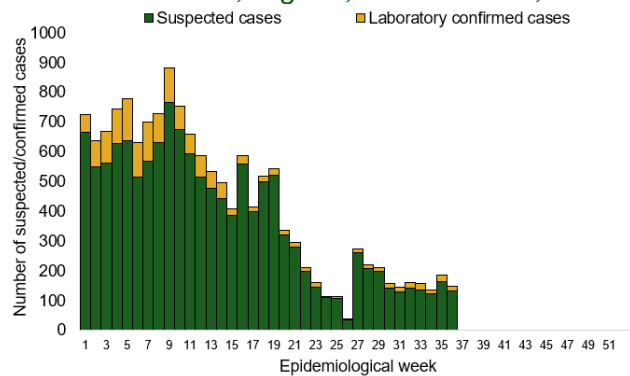
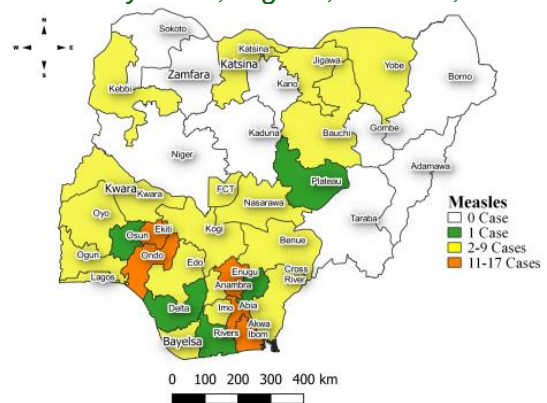


Figure 10: Location of suspected cases of Measles by State, Nigeria, week 36, 2024



Key points

- There were 148 suspected cases of Measles reported from 116 LGAs in 27 states and FCT. There were 15 laboratory confirmed cases and no death was recorded.

Actions

To date

- National Measles TWG is closely monitoring measles surveillance data and providing feedback to relevant agencies and development partners.
- Supported NPHCDA in the pre-implementation and implementation of 2024 Integrated Supplementary Immunization Activities (SIA)
- Distribution of Measles and Rubella Surveillance Guidelines:
- Supported the validation of the National Measles Elimination Strategic Plan (2019–2028) workshop
- Validated the Measles Outbreak Preparedness and Response (MOBR) Training Materials to standardize training content and materials for outbreak preparedness

Mpox

Week 36

Suspected cases	Confirmed cases	Deaths	Number of States and LGAs affected
35	2	0	State: 7 LGA: 21

Year to date (week 1 – 36)

Suspected cases		Confirmed cases		Deaths		CFR	
2023	2024	2023	2024	2023	2024	2023	2024
928	977	80	60	2	0	0.2%	0%

Figure 11: Number of suspected and confirmed cases of Mpox, Nigeria, weeks 1 – 36, 2024.

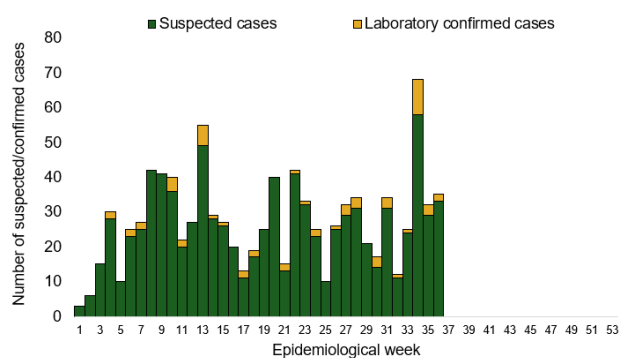
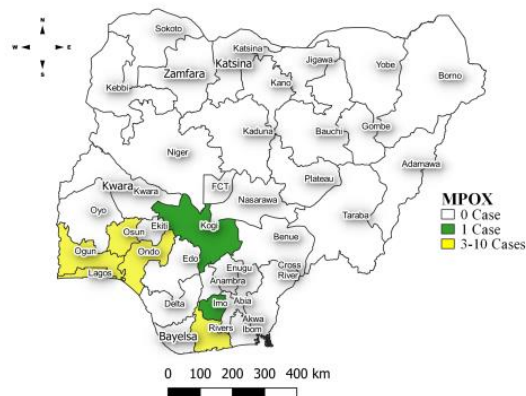


Figure 12: Location of suspected cases of Mpox by State, Nigeria, week 36, 2024



Key points

- There were 32 suspected cases of Mpox reported from 14 LGAs in nine states. There were three laboratory confirmed cases and no death was recorded.

Actions

To date

- Mpox Incident Management System activated to coordinate response activities
- Supported training of state Epidemiologist and DSNO with surveillance support staff
- Optimisation of 6 laboratories for Mpox testing and supported remote capacity building of laboratory staff at the Molecular Laboratories
- Conducted capacity building of health educators on Mpox RCCE and Content development for RCCE materials
- Supported the coordination of mpox research (UKPHRST/ NCDC study on Mpox collaborative study)

Acute Flaccid Paralysis (AFP)

Week 36

Suspected cases	Confirmed cases	Deaths	Number of States and LGAs affected
93	0	0	State: 26 LGA: 81

Year to date (week 1 – 36)

Suspected cases		Confirmed cases		Deaths		CFR	
2023	2024	2023	2024	2023	2024	2023	2024
4739	4709	0	0	0	0	0%	0%

Figure 13: Number of suspected and confirmed cases of AFP, Nigeria, weeks 1 – 36, 2023

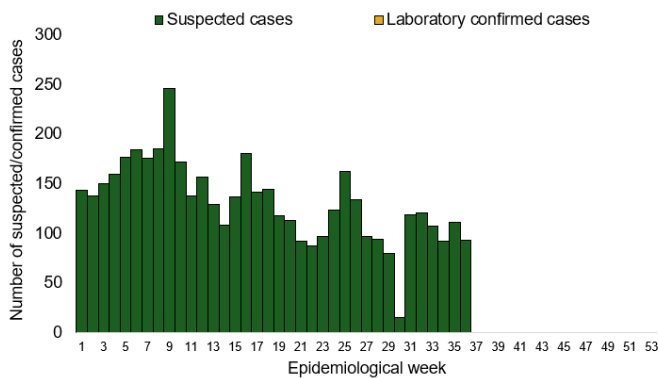
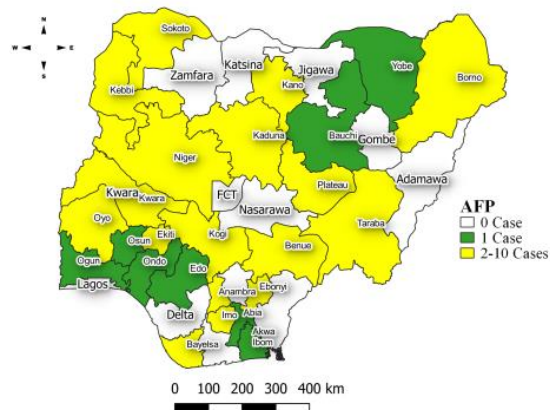


Figure 14: Location of suspected cases of AFP by State, Nigeria, week 36, 2024



Key points

- There were 111 suspected cases of AFP reported from 88 LGAs in 28 states. There was no laboratory confirmed case and no death was recorded.

National Influenza Sentinel Surveillance

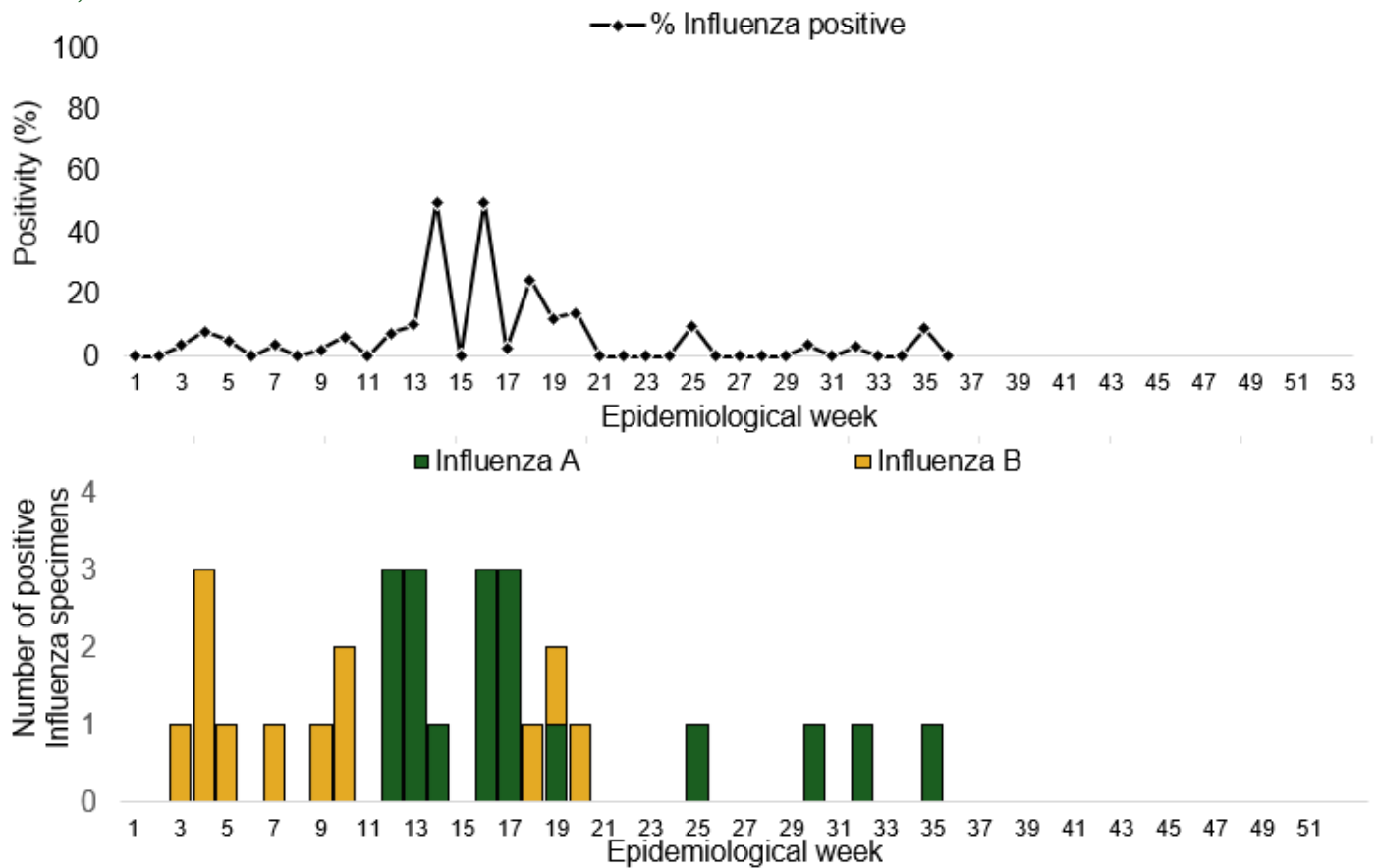
Week 36

Suspected Cases	Confirmed Cases	Confirmed Case by type	
		Influenza A	Influenza B
7	0	0	0

Year to date (week 1 – 36)

Suspected cases	Total Confirmed Cases	Confirmed cases by type	
		Influenza A	Influenza B
597	30	18	12

Figure 15: Number of influenza positive specimens by type and percentage positive by epidemiological week, 2023.



Coronavirus Disease (COVID-19)

Week 36

Suspected cases	Confirmed cases	Deaths	Number of States and LGAs affected
115	0	0	State: 1 LGA: 1

Year to date (Week 1- 36)

Suspected cases		Confirmed cases		Deaths		CFR	
2023	2024	2023	2024	2023	2024	2023	2024
46723	1685	3830	803	3	1	0.01%	0.1%

Figure 16: Epidemic curve of confirmed cases of COVID-19, Nigeria, week 1 - 36, 2024

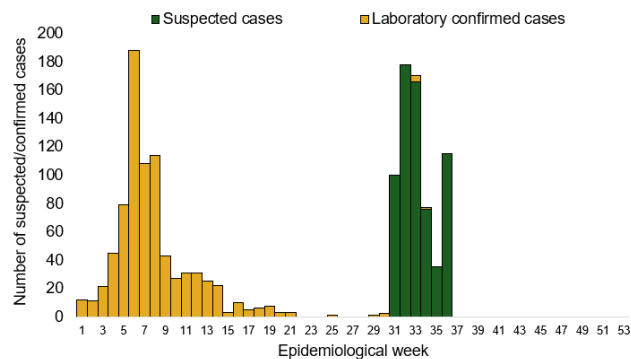
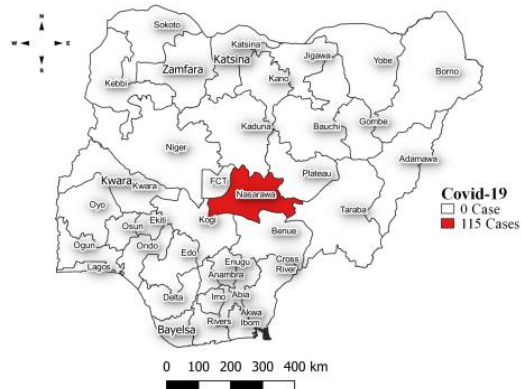


Figure 17: Location of suspected cases of COVID-19 by State, Nigeria, as at week 36, 2024



Key points

- There were 115 suspected cases of Covid-19 reported from one LGA in Nasarawa state. There was no laboratory confirmed case and no death was recorded.

Actions

To date

- Follow up with the Lab Data team to ensure Data entry on SORMAS
- Harmonization meeting of Covid-19 and National influenza Sentinel Sites
- Enhanced surveillance activity to encourage test rates
- Coordinate training sessions for surveillance officers on proper data entry protocols for SORMAS.
- Implement regular site visits to verify data quality and compliance with harmonization protocols.

Diphtheria

Week 36

Suspected cases	Confirmed cases	Deaths	Number of States and LGAs affected
363	229	9	State: 7 LGA: 13

Year to date (week 1 – 36)

Suspected cases		Confirmed cases		Deaths		CFR	
2023	2024	2023	2024	2023	2024	2023	2024
11653	15495	6795	9780	523	417	4.5%	2.7%

Figure 18: Number of suspected and confirmed cases of Diphtheria, Nigeria, weeks 1 – 36, 2024

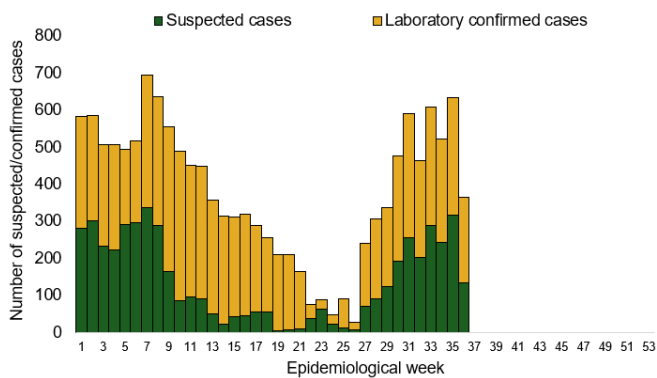
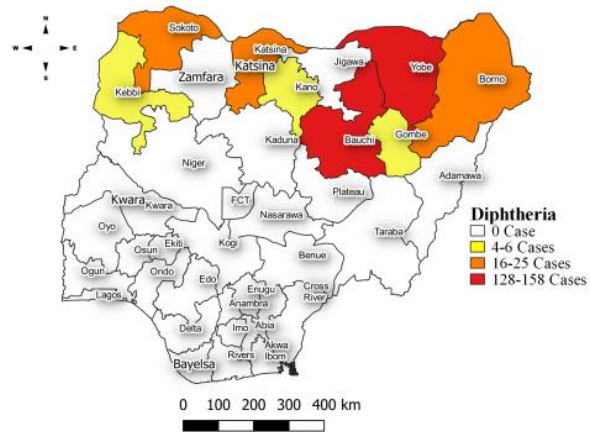


Figure 19: Location of suspected cases of Diphtheria by State, Nigeria, week 36, 2024



Key points

- There were 363 suspected cases of Diphtheria reported from 13 LGAs in seven states. There were 229 confirmed cases and nine deaths were recorded.

Actions

To date

- National Diphtheria Technical Working Group (TWG) is monitoring activities in all states.
- Developed Diphtheria surveillance and outbreak response guidelines
- Established Diphtheria laboratory testing network across state
- Conducted case management and IPC training for healthcare workers involved in Diphtheria case management
- Supported NPHCDA in the Implemented reactive mass vaccinations campaign in affected states across states

Event Based Surveillance (EBS)

Week 36

Key points

For the reporting week 36

- 186 Calls were successfully routed to agents and answered
- 22 calls not routed to agents (Failed call)
- 208 total number of calls (successful and failed)
- 0 number of SMS received
- 0 WhatsApp/live chat messages received
- The percentage of failed to total inbound calls 10.6%
- 4 signals picked and escalated to the respective states
 - 7 dead from cholera in Jigawa State
 - Gastroenteritis kills 7 in Jigawa State
 - Suspected case of Mpox in Anambra State
 - Chemical poisoning in an industrial area of Kano State

For week 1 – 36

- 4,220 calls were successfully routed to agents and answered
- 200 calls not routed to agents (Failed call)
- 4420 total inbound calls recorded
- The Percentage of failed to total inbound calls: 4.5%
- 62 Signals picked and escalated

Categories of Calls

- General inquiries 74
- Hoax call and others 55
- Enquiries on COVID-19 vaccination certificate 0
- Report of health conditions 21
- Inquiry on Cholera 9
- Health Declaration form-related queries 29
- Inquiries on Diphtheria symptoms, treatment, and Vaccine 0
- Inquiries on Mpox 41
- Inquiries on Mpox vaccine 18
- Covid19 vaccination inquiries 0
- Inquiries on employment 0

Figure 20: Number of successful and failed calls, weeks 1 – 36, 2024

