



NIGERIA CENTRE FOR DISEASE CONTROL AND PREVENTION

Nigeria Centre for Disease Control and Prevention

Protecting the health of Nigerians

Weekly Epidemiological Report

Week 25: 17th – 23rd June 2024

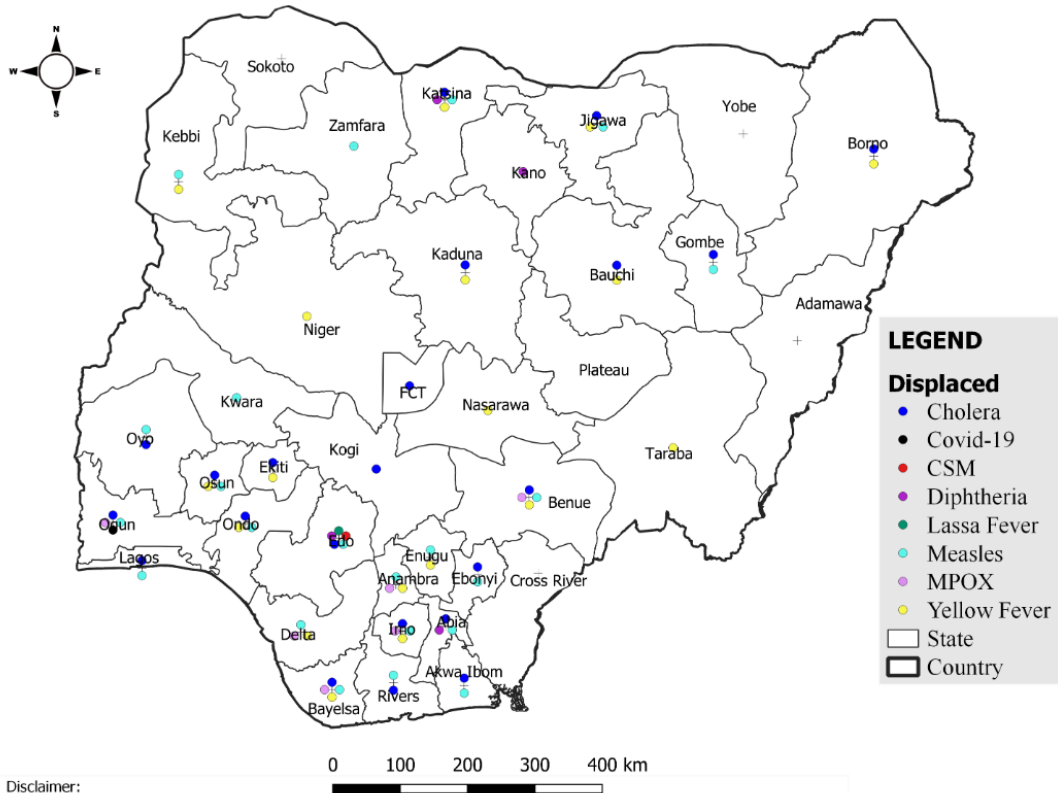
Summary of Incidents

Ongoing incidents

2

Ongoing incidents are defined as confirmed cases where a national EOC or equivalent has been activated (Cholera and Diphtheria)

Other incidents are those with confirmed cases for which EOC is not activated



Summary

Week 25: 17th – 23rd June 2024

Lassa Fever ^{1,2}	Cerebrospinal Meningitis (CSM) ^{1,4}	Yellow Fever ^{1,4}
74 Suspected case(s)	2 Suspected case(s)	41 Suspected case(s)
2 Confirmed case(s)	0 Confirmed case(s)	0 Confirmed case(s)
0 Death(s)	0 Death(s)	0 Death(s)
Cholera ^{1,4}	Measles ^{1,4}	Mpox ^{1,4}
713 Suspected case(s)	112 Suspected case(s)	10 Suspected case(s)
8 Confirmed case(s)	6 Confirmed case(s)	0 Confirmed case(s)
26 Death(s)	0 Death(s)	0 Death(s)
Acute Flaccid Paralysis (AFP) ^{1,4}	National Sentinel influenza surveillance ⁵	Coronavirus Disease ^{1,}
162 Suspected case(s)	10 Suspected case(s)	1 Suspected case(s)
0 Confirmed case(s)	1 Confirmed case(s)	0 Confirmed case(s)
0		0 Death(s)
Diphtheria ^{1,4}		
91 Suspected case(s)		
79 Confirmed case(s)		
2 Death(s)		

- Information for this disease was retrieved from the Technical Working Group and Situation Reports
- Case Fatality Rate (CFR) for this disease is reported for confirmed cases only.
- CFR for this disease is reported for total cases i.e. suspected + confirmed.
- Information for sentinel influenza was retrieved from the laboratory.

Lassa Fever

Week 25

Suspected cases	Confirmed cases	Deaths	Number of States and LGAs affected
74	2	0	State: 12 LGA: 22

Year to date (week 1 – 25)

Suspected cases		Confirmed cases		Deaths		CFR	
2023	2024	2023	2024	2023	2024	2023	2024
6161	6902	974	920	164	162	20%	17.6%

Figure 1: Number of suspected and confirmed cases of Lassa Fever, Nigeria, Weeks 1 – 25, 2024

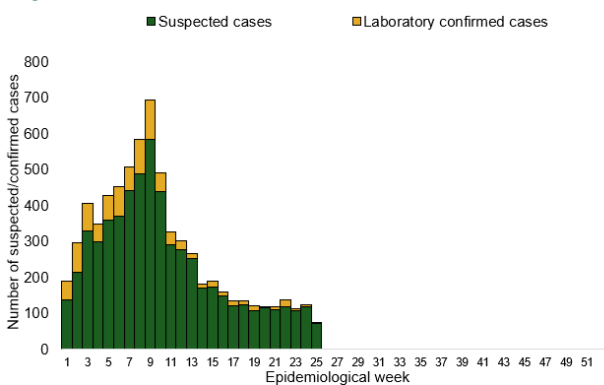
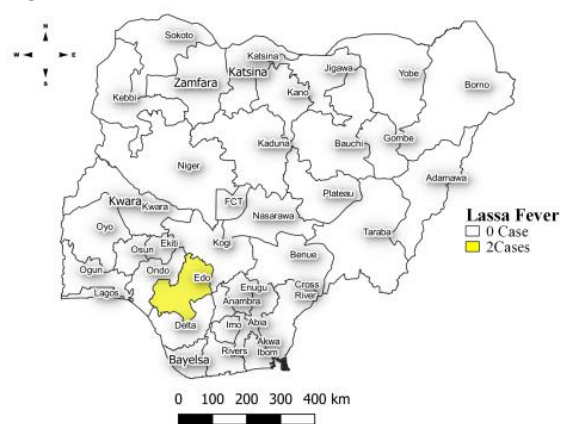


Figure 2: Location of confirmed cases of Lassa Fever by State, Nigeria, week 25, 2024



Key points

- There were 74 suspected cases of Lassa Fever reported from 22 LGAs in 12 states. There were two laboratory confirmed cases and no death was recorded.

Actions

To date:

- National Lassa fever multi-partner, multi-sectoral Technical Working Group (TWG) continues to coordinate the response activities at all levels.
- Held the 1st Lassa Fever webinar for 2024 focused on “Empowering Communities to Combat Lassa Fever
- Deployed NRRT to 8 states with funds from the Basic Health Care Provision Fund (BHCPF)
- Participated in the Inaugural Meeting of the Community Advisory Board for the Research on Lassa fever phase 2 vaccine trial
- Reviewed the Lassa Fever Advocacy toolkit with support from BA-N Conducted the 2024 National Lassa Fever After Action Review (AAR) Workshop

Cerebrospinal Meningitis (CSM)

Week 25

Suspected cases	Confirmed cases	Deaths	Number of States and LGAs affected
2	0	0	State: 1 LGA: 1

Year to date (week 1 – 25)

Suspected cases		Confirmed cases		Deaths		CFR	
2023	2024	2023	2024	2023	2024	2023	2024
1917	3002	72	50	74	128	3.9%	4.3%

Figure 3: Number of suspected and confirmed cases of CSM, Nigeria, weeks 1 – 25, 2024

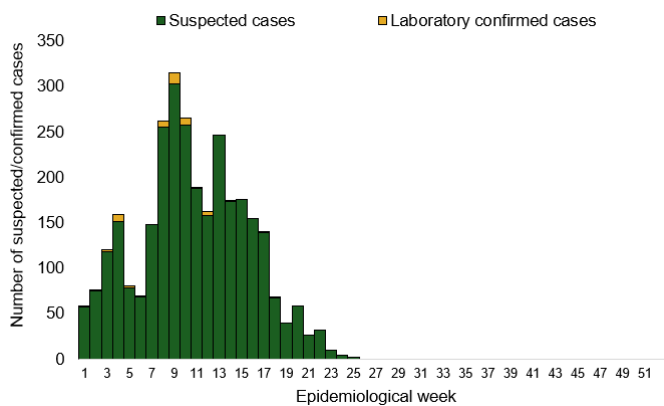
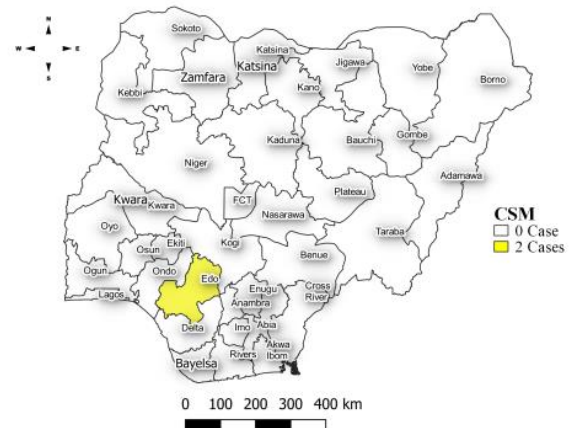


Figure 4: Location of suspected cases of CSM by State, Nigeria, week 25, 2024



Key points

- There were two suspected cases of Cerebrospinal meningitis (CSM) reported from one LGA in Edo state. There was no laboratory confirmed case and no death was reported.

Actions

To date:

- National CSM TWG meets weekly to review reports from states and plan appropriately.

Yellow Fever

Week 25

Suspected cases	Confirmed cases	Deaths	Number of States and LGAs affected
41	0	0	State: 19 LGA: 36

Year to date (week 1 – 25)

Suspected cases		Confirmed cases		Deaths		CFR	
2023	2024	2023	2024	2023	2024	2023	2024
1485	1481	20	5	7	1	0.5%	0.1%

Figure 5: Number of suspected and confirmed cases of Yellow Fever, Nigeria, weeks 1 – 25, 2024

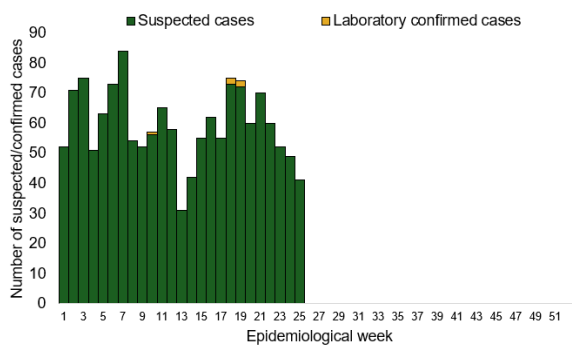
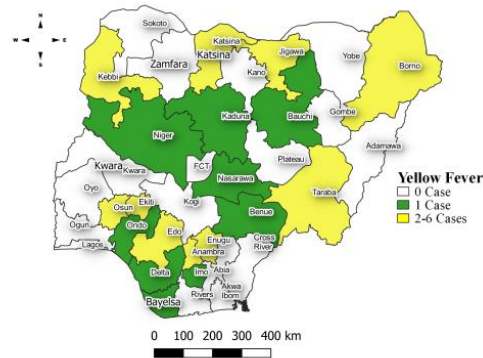


Figure 6: Location of suspected cases of Yellow Fever by States, Nigeria, week 25, 2024



Key points

- There were 41 suspected cases of Yellow Fever (YF) reported from 36 LGAs in 19 states. There was no laboratory confirmed case and no death was recorded.

Actions

To date:

- National YF multi-partner Technical Working Group (TWG) continues to coordinate activities across states.
- Conducted dynamic risk assessment to guide overall preparedness and response strategies.
- Provided off-site support to states to Ondo and Bayelsa states with confirmed cases
- Harmonizing surveillance and laboratory data
- Regular sample testing at the regional reference laboratory
- Coordination of yellow fever sample management and transportation from all states to the regional reference laboratory

Cholera

Week 25

Suspected cases	Confirmed cases	Deaths	Number of States and LGAs affected
713	8	26	State: 20 + FCT LGA: 67

Year to date (week 1 – 25)

Suspected cases		Confirmed cases		Deaths		CFR	
2023	2024	2023	2024	2023	2024	2023	2024
2509	2953	33	44	68	96	2.7%	3.2%

Figure 7: Number of suspected and confirmed cases of Cholera, Nigeria, weeks 1 – 25, 2024

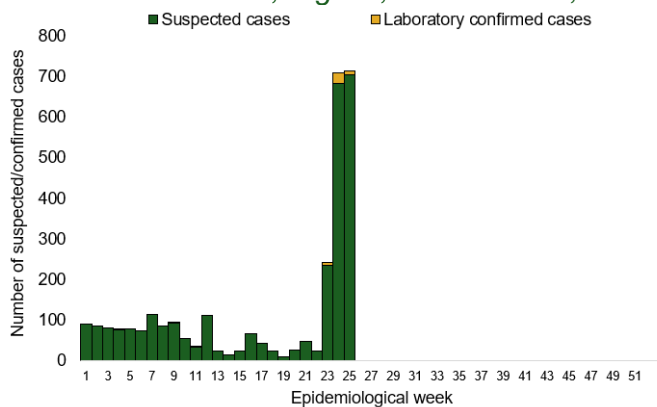
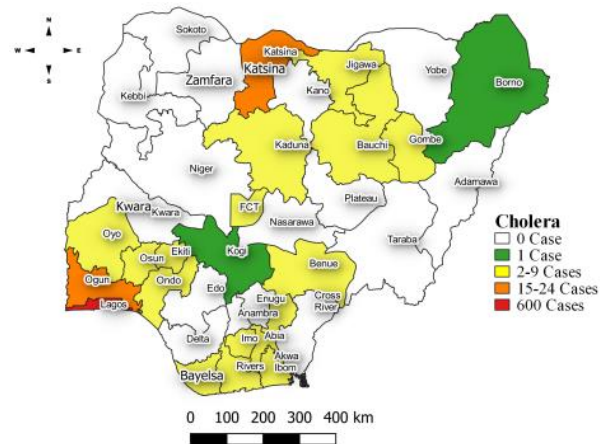


Figure 8: Location of suspected cases of Cholera by State, Nigeria, week 25, 2024



Key points

- There were 713 suspected cases of Cholera reported from 67 LGAs in 20 states and FCT. There were eight laboratory confirmed cases and 26 deaths were recorded.

Actions To date

- National Cholera Multi-Sectoral Technical Working Group (TWG) is monitoring all states and supporting affected states.
- The National Emergency Operating Centre (EOC) was activated

Measles

Week 25

Suspected cases	Confirmed cases	Deaths	Number of States and LGAs affected
112	6	0	State: 22 LGA: 66

Year to date (week 1 – 25)

Suspected cases		Confirmed cases		Deaths		CFR	
2023	2024	2023	2024	2023	2024	2023	2024
15105	13232	1315	1486	0	61	0%	0.5%

Figure 9: Number of suspected and confirmed cases of Measles, Nigeria, weeks 1 – 25, 2024.

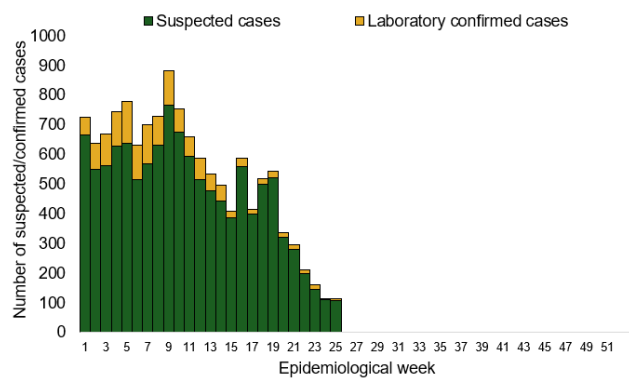
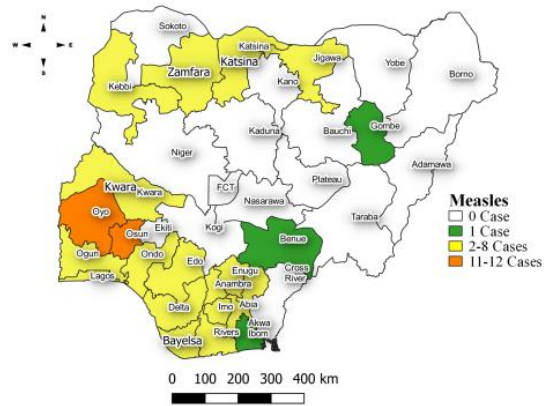


Figure 10: Location of suspected cases of Measles by State, Nigeria, week 25, 2024



Key points

- There were 112 suspected cases of Measles reported from 66 LGAs in 22 states. There were six laboratory confirmed cases and no death was recorded.

Actions

To date

- National Measles TWG is closely monitoring measles surveillance data and providing feedback to relevant agencies and development partners.

Mpox

Week 25

Suspected cases	Confirmed cases	Deaths	Number of States and LGAs affected
10	0	0	State: 6 LGA: 8

Year to date (week 1 – 25)

Suspected cases		Confirmed cases		Deaths		CFR	
2023	2024	2023	2024	2023	2024	2023	2024
800	614	80	31	2	0	0.3%	0%

Figure 11: Number of suspected and confirmed cases of Mpox, Nigeria, weeks 1 – 25, 2024.

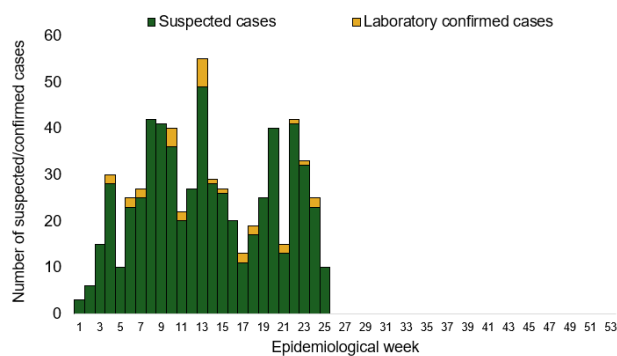
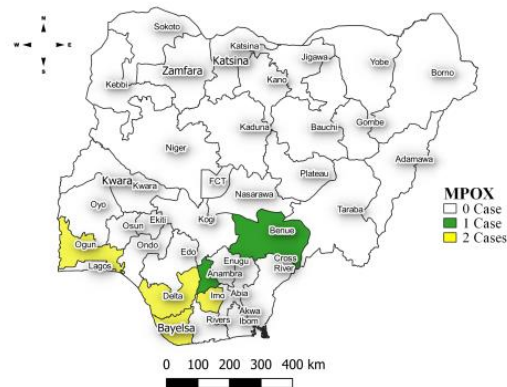


Figure 12: Location of suspected cases of Mpox by State, Nigeria, week 25, 2024



Key points

- There were 10 suspected cases of Mpox reported from eight LGAs in six states. There was no laboratory confirmed case and no death was recorded.

Actions To date

- National Monkeypox Technical Working Group (TWG) is monitoring activities in all states.

Acute Flaccid Paralysis (AFP)

Week 25

Suspected cases	Confirmed cases	Deaths	Number of States and LGAs affected
162	0	0	State: 31 LGA: 112

Year to date (week 1 – 25)

Suspected cases		Confirmed cases		Deaths		CFR	
2023	2024	2023	2024	2023	2024	2023	2024
3548	3649	0	0	0	0	0%	0%

Figure 13: Number of suspected and confirmed cases of AFP, Nigeria, weeks 1 – 25, 2023

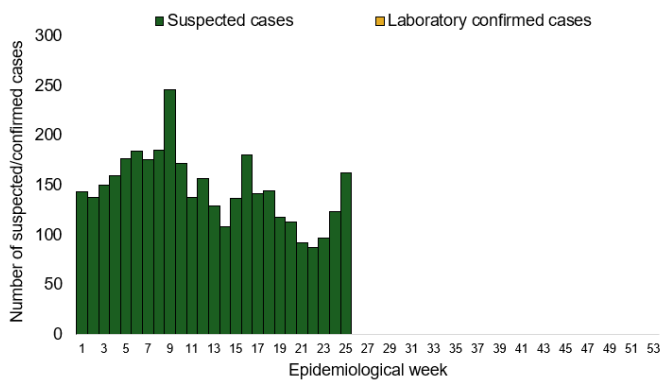
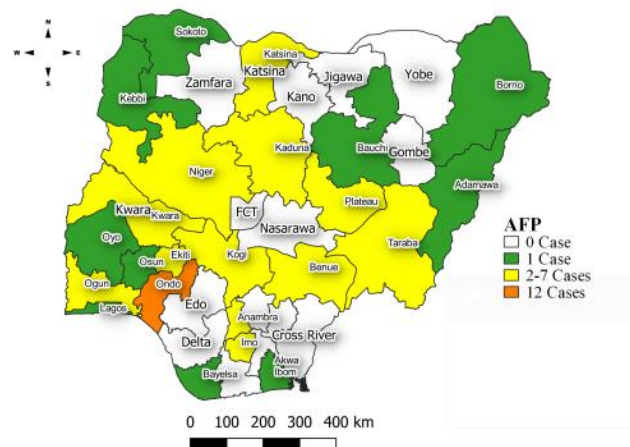


Figure 14: Location of suspected cases of AFP by State, Nigeria, week 25, 2024



Key points

- There were 162 suspected cases of AFP reported from 112 LGAs in 31 states. There was no laboratory confirmed case and no death was recorded.

National Influenza Sentinel Surveillance

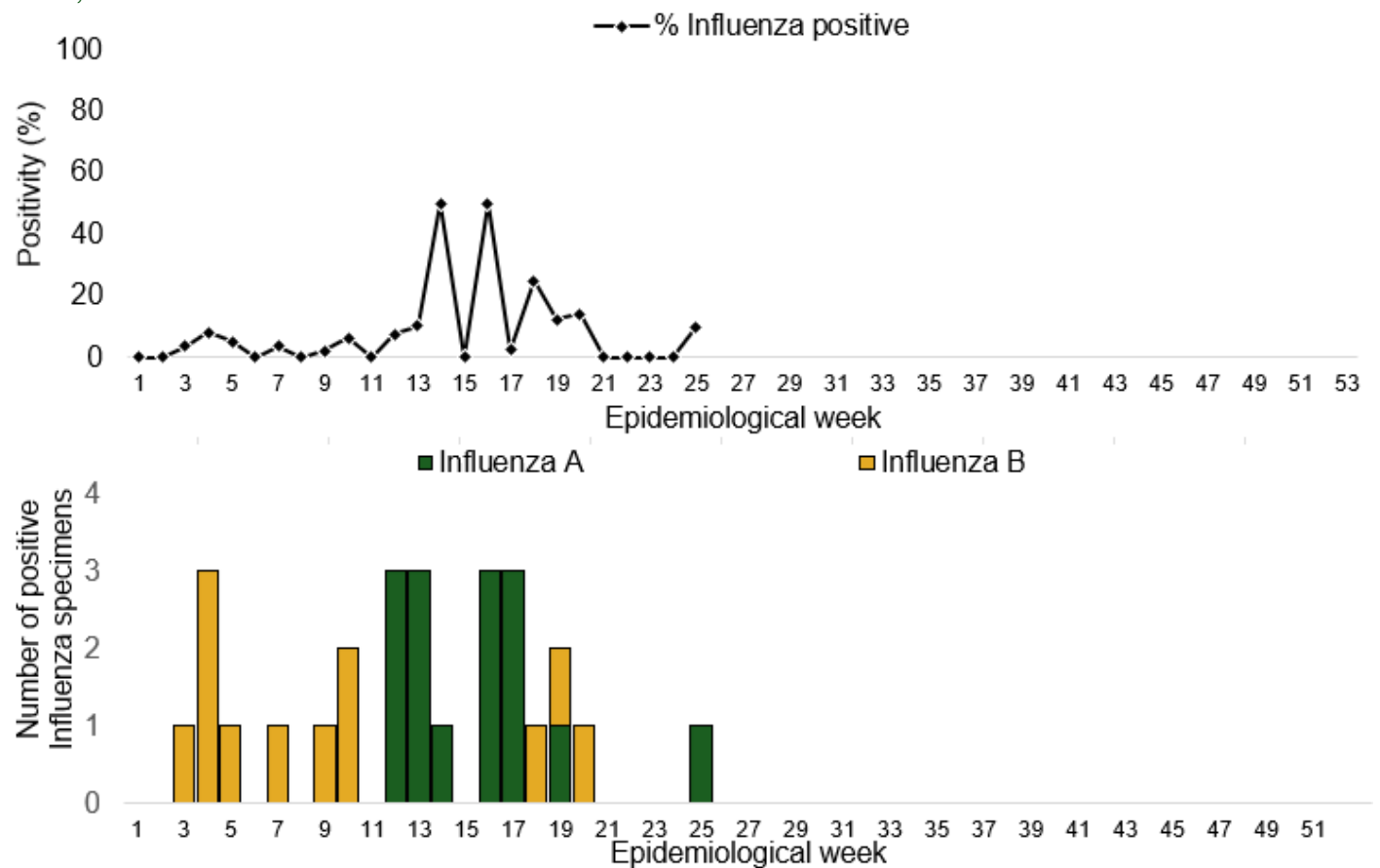
Week 25

Suspected Cases	Confirmed Cases	Confirmed Case by type	
		Influenza A	Influenza B
10	1	1	0

Year to date (week 1 – 25)

Suspected cases	Total Confirmed Cases	Confirmed cases by type	
445	27	Influenza A 15	Influenza B 12

Figure 15: Number of influenza positive specimens by type and percentage positive by epidemiological week, 2023.



Coronavirus Disease (COVID-19)

Week 25

Suspected cases	Confirmed cases	Deaths	Number of States and LGAs affected
1	1	0	State: 1 LGA: 1

Year to date (Week 1- 25)

Suspected cases		Confirmed cases		Deaths		CFR	
2023	2024	2023	2024	2023	2024	2023	2024
515	795	515	795	1	1	0.2%	0.1%

Figure 16: Epidemic curve of confirmed cases of COVID-19, Nigeria, week 1 - 25, 2024

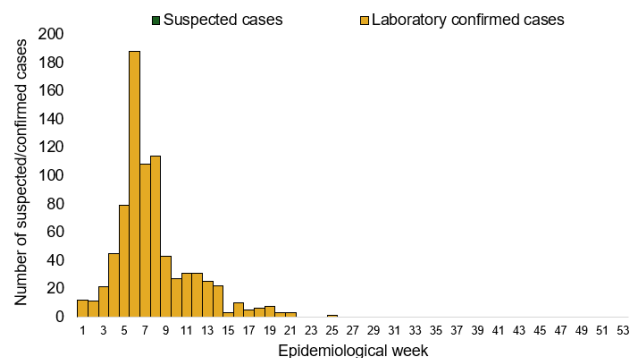
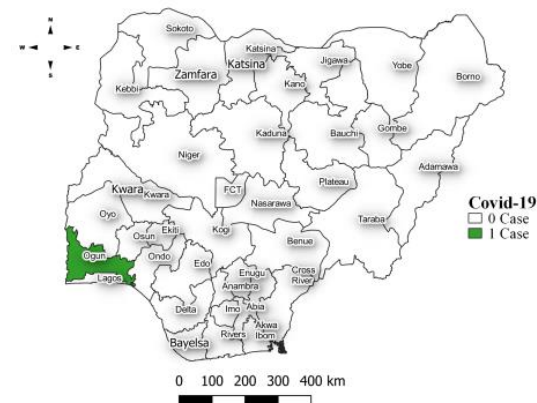


Figure 17: Location of confirmed cases of COVID-19 by State, Nigeria, as at week 25, 2024



Key points

- There was one suspected case of Covid 19 reported from one LGAs in Ogun state. There was one confirmed case and no death was recorded

Actions

To date:

- Multi-sectoral Public Health Emergency Operation Centres (PHEOC) activated at the National and affected States

Diphtheria

Week 25

Suspected cases	Confirmed cases	Deaths	Number of States and LGAs affected
91	79	2	State: 3 LGA: 13

Year to date (week 1 – 25)

Suspected cases		Confirmed cases		Deaths		CFR	
2023	2024	2023	2024	2023	2024	2023	2024
2625	9177	1212	6080	132	101	5%	1.1%

Figure 18: Number of suspected and confirmed cases of Diphtheria, Nigeria, weeks 1 – 25, 2024

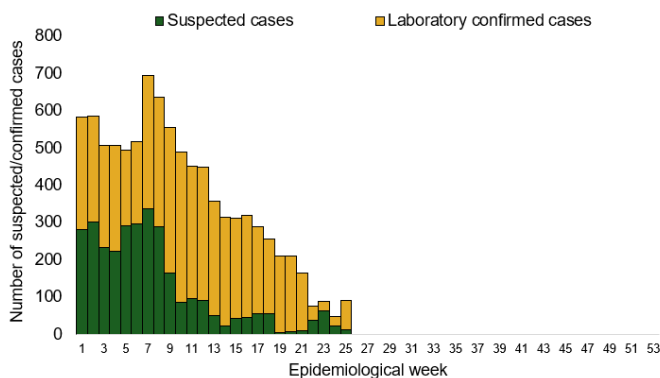
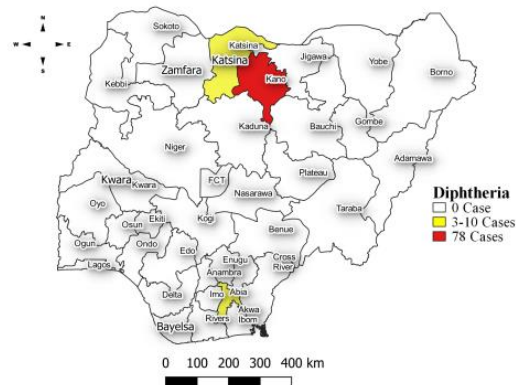


Figure 19: Location of suspected cases of Diphtheria by State, Nigeria, week 25, 2024



Key points

- There were 91 suspected cases of Diphtheria reported from 13 LGAs in three states. There were 79 confirmed cases and two deaths were recorded.

Actions To date

- National Diphtheria Technical Working Group (TWG) is monitoring activities in all states.
- Harmonisation of surveillance and laboratory data from across states and laboratories.
- Provision of off-site surveillance support to affected States.

Event Based Surveillance (EBS)

Week 25

Key points

For the reporting week 25

- 157 Calls were successfully routed to agents and answered
- 5 calls not routed to agents (Failed call)
- 162 total number of calls (successful and failed)
- 0 number of SMS received
- 0 WhatsApp/live chat messages received
- The percentage of failed to total inbound calls 3.1%
- 3 signal was picked and escalated to the Delta, Lagos and Ogun State respectively
 - 1 suspected case of Trypanosomiasis in Oshimili South, Delta State
 - 2 Cholera confirmed cases in Lagos and Ogun State

For week 1 – 25

- 3,010 calls were successfully routed to agents and answered
- 139 calls not routed to agents (Failed call)
- 3,149 total inbound calls recorded
- The Percentage of failed to total inbound calls: 4.4%
- 40 Signals picked and escalated

Categories of Calls

- General inquiries 52
- Hoax call and others 64
- Enquiries on COVID-19 vaccination certificate 2
- Report of health conditions 8
- Inquiry on Lassa fever 7
- Inquiry on malaria vaccine 0
- Health Declaration form-related queries 0
- Inquiries on Diphtheria symptoms, treatment, and Vaccine 4
- Inquiries on yellow fever vaccine 9
- Inquiries on Hepatitis 2
- Inquiries on Lassa fever vaccine 3
- Covid19 vaccination inquiries 5
- Inquiries on employment 1

Figure 20: Number of successful and failed calls, weeks 1 – 25, 2024

