



NIGERIA CENTRE FOR DISEASE CONTROL AND PREVENTION

Nigeria Centre for Disease Control and Prevention

Protecting the health of Nigerians

# Weekly Epidemiological Report

Week 24: 10<sup>th</sup> – 16<sup>th</sup> June 2024

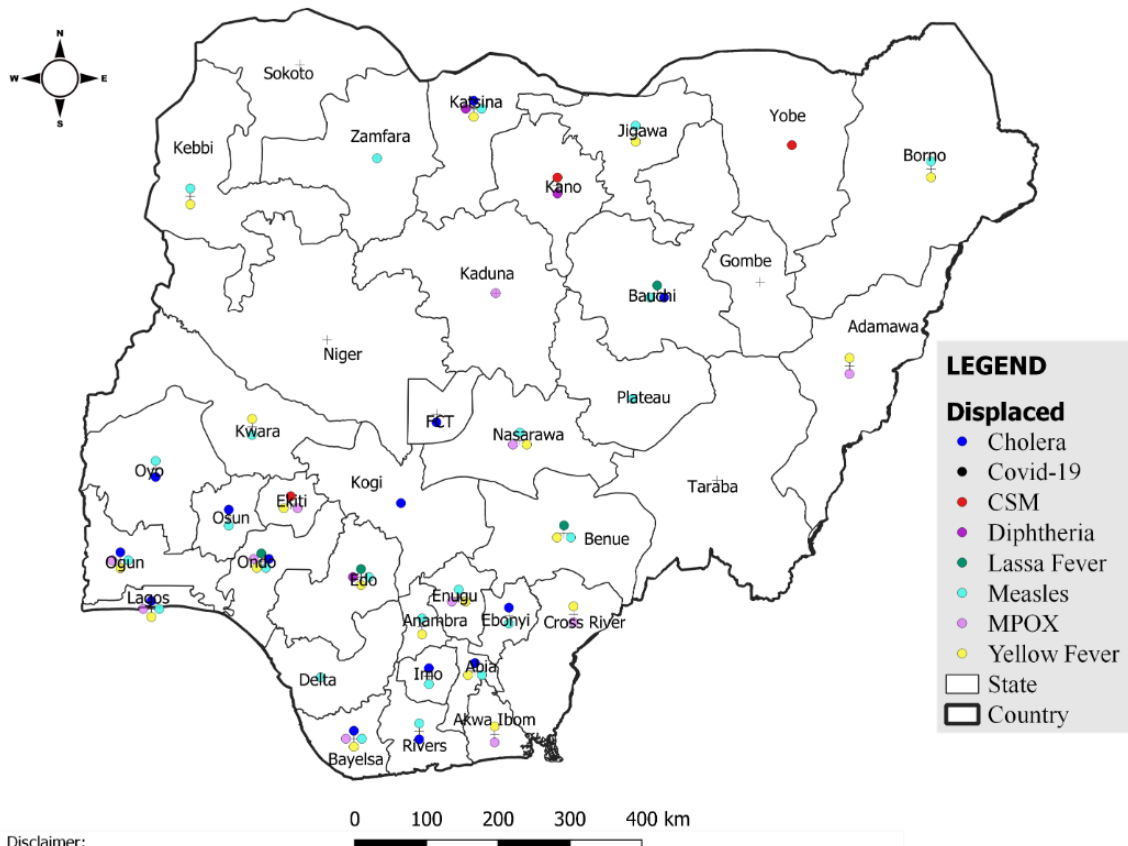
## Summary of Incidents

### Ongoing incidents

1

Ongoing incidents are defined as confirmed cases where a national EOC or equivalent has been activated (Diphtheria)

Other incidents are those with confirmed cases for which EOC is not activated



## Summary

Week 24: 10<sup>th</sup> – 16<sup>th</sup> June 2024

Lassa Fever <sup>1,2</sup>	Cerebrospinal Meningitis (CSM) <sup>1,4</sup>	Yellow Fever <sup>1,4</sup>
124 Suspected case(s)	4 Suspected case(s)	49 Suspected case(s)
7 Confirmed case(s)	0 Confirmed case(s)	0 Confirmed case(s)
0 Death(s)	0 Death(s)	0 Death(s)
Cholera <sup>1,4</sup>	Measles <sup>1,4</sup>	Mpox <sup>1,4</sup>
709 Suspected case(s)	115 Suspected case(s)	25 Suspected case(s)
27 Confirmed case(s)	5 Confirmed case(s)	2 Confirmed case(s)
35 Death(s)	0 Death(s)	0 Death(s)
Acute Flaccid Paralysis (AFP) <sup>1,4</sup>	National Sentinel influenza surveillance <sup>5</sup>	Coronavirus Disease <sup>1,</sup>
123 Suspected case(s)	7 Suspected case(s)	0 Suspected case(s)
0 Confirmed case(s)	0 Confirmed case(s)	0 Confirmed case(s)
0 Death(s)		0 Death(s)
Diphtheria <sup>1,4</sup>		
46 Suspected case(s)		
24 Confirmed case(s)		
0 Death(s)		

1. Information for this disease was retrieved from the Technical Working Group and Situation Reports
2. Case Fatality Rate (CFR) for this disease is reported for confirmed cases only.
3. CFR for this disease is reported for total cases i.e. suspected + confirmed.
4. Information for sentinel influenza was retrieved from the laboratory.

## Lassa Fever

### Week 24

Suspected cases	Confirmed cases	Deaths	Number of States and LGAs affected
124	7	0	State: 10 + FCT LGA: 16

### Year to date (week 1 – 24)

Suspected cases		Confirmed cases		Deaths		CFR	
2023	2024	2023	2024	2023	2024	2023	2024
6000	6828	963	918	164	162	17.1%	17.6%

Figure 1: Number of suspected and confirmed cases of Lassa Fever, Nigeria, Weeks 1 – 24, 2024

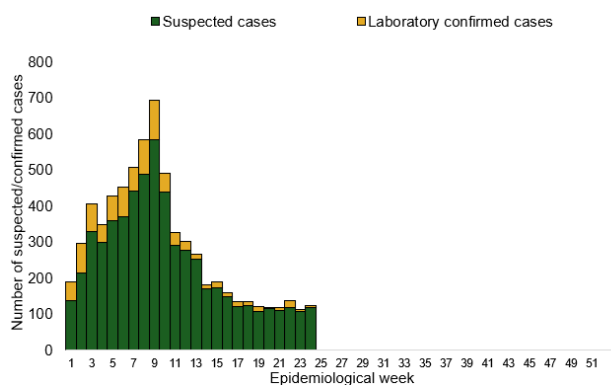
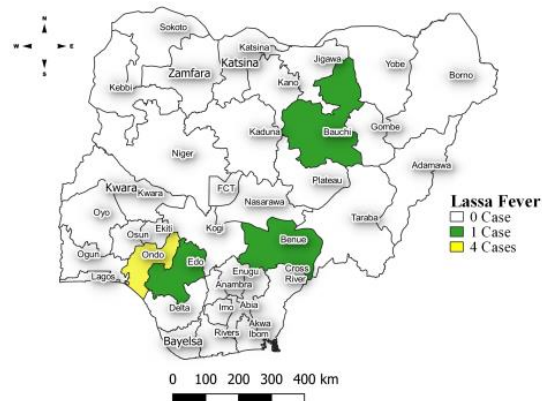


Figure 2: Location of **confirmed** cases of Lassa Fever by State, Nigeria, week 24, 2024



## Key points

- There were 124 suspected cases of Lassa Fever reported from 16 LGAs in 10 states and FCT. There were seven laboratory confirmed cases and no death was recorded.

## Actions

### To date:

- National Lassa fever multi-partner, multi-sectoral Technical Working Group (TWG) continues to coordinate the response activities at all levels.
- Held the 1st Lassa Fever webinar for 2024 focused on “Empowering Communities to Combat Lassa Fever
- Deployed NRRT to 8 states with funds from the Basic Health Care Provision Fund (BHCPF)
- Participated in the Inaugural Meeting of the Community Advisory Board for the Research on Lassa fever phase 2 vaccine trial
- Reviewed the Lassa Fever Advocacy toolkit with support from BA-N Conducted the 2024 National Lassa Fever After Action Review (AAR) Workshop

## Cerebrospinal Meningitis (CSM)

### Week 24

Suspected cases	Confirmed cases	Deaths	Number of States and LGAs affected
4	0	0	State: 3 + FCT LGA: 4

### Year to date (week 1 – 24)

Suspected cases		Confirmed cases		Deaths		CFR	
2023	2024	2023	2024	2023	2024	2023	2024
911	3000	72	50	74	128	8.1%	4.3%

Figure 3: Number of suspected and confirmed cases of CSM, Nigeria, weeks 1 – 24, 2024

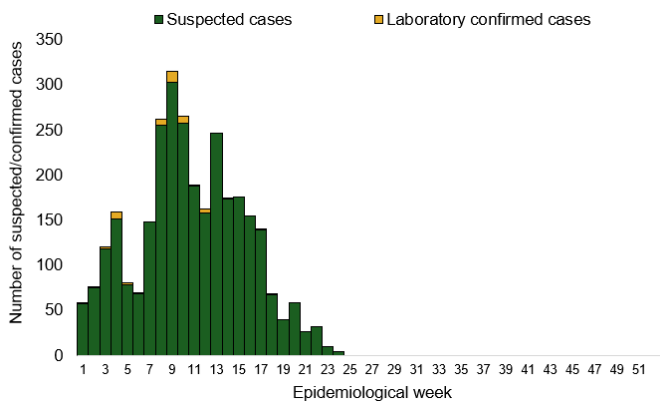
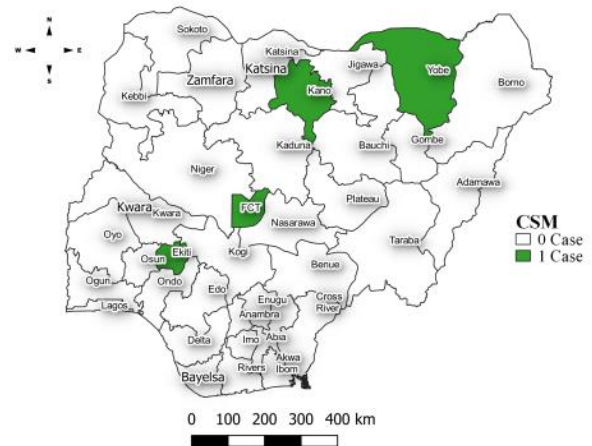


Figure 4: Location of suspected cases of CSM by State, Nigeria, week 24, 2024



### Key points

- There were four suspected cases of Cerebrospinal meningitis (CSM) reported from four LGAs in three states and FCT. There was no laboratory confirmed case and no death was reported.

### Actions

#### To date:

- National CSM TWG meets weekly to review reports from states and plan appropriately.

## Yellow Fever

### Week 24

Suspected cases	Confirmed cases	Deaths	Number of States and LGAs affected
49	0	0	State: 19 LGA: 40

### Year to date (week 1 – 24)

Suspected cases		Confirmed cases		Deaths		CFR	
2023	2024	2023	2024	2023	2024	2023	2024
1435	1440	19	5	7	1	0.5%	0.1%

Figure 5: Number of suspected and confirmed cases of Yellow Fever, Nigeria, weeks 1 – 24, 2024

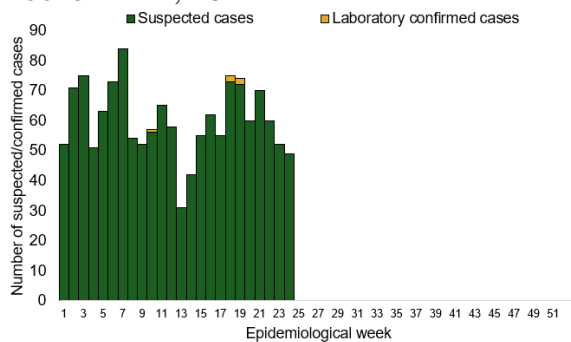
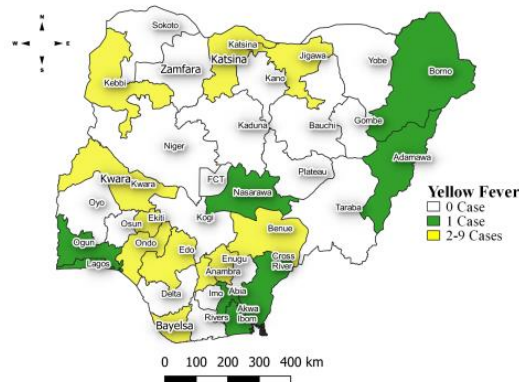


Figure 6: Location of suspected cases of Yellow Fever by States, Nigeria, week 24, 2024



### Key points

- There were 49 suspected cases of Yellow Fever (YF) reported from 40 LGAs in 19 states. There was no laboratory confirmed case and no death was recorded.

### Actions

#### To date:

- National YF multi-partner Technical Working Group (TWG) continues to coordinate activities across states.
- Conducted dynamic risk assessment to guide overall preparedness and response strategies.
- Provided off-site support to states to Ondo and Bayelsa states with confirmed cases
- Harmonizing surveillance and laboratory data
- Regular sample testing at the regional reference laboratory
- Coordination of yellow fever sample management and transportation from all states to the regional reference laboratory

## Cholera

### Week 24

Suspected cases	Confirmed cases	Deaths	Number of States and LGAs affected
709	27	35	State: 13 + FCT LGA: 42

### Year to date (week 1 – 24)

Suspected cases		Confirmed cases		Deaths		CFR	
2023	2024	2023	2024	2023	2024	2023	2024
2493	2240	33	36	66	70	2.6%	3.1%

Figure 7: Number of suspected and confirmed cases of Cholera, Nigeria, weeks 1 – 24, 2024

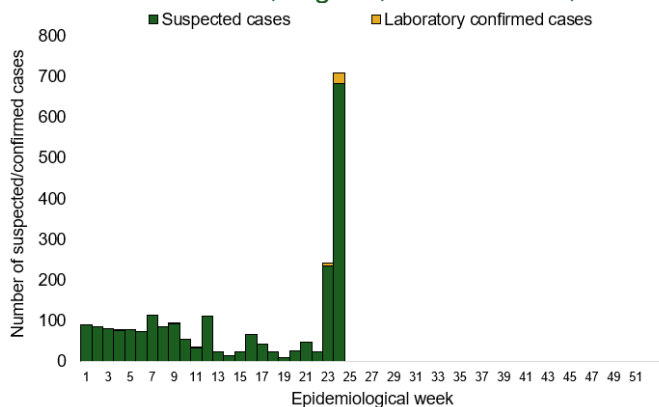
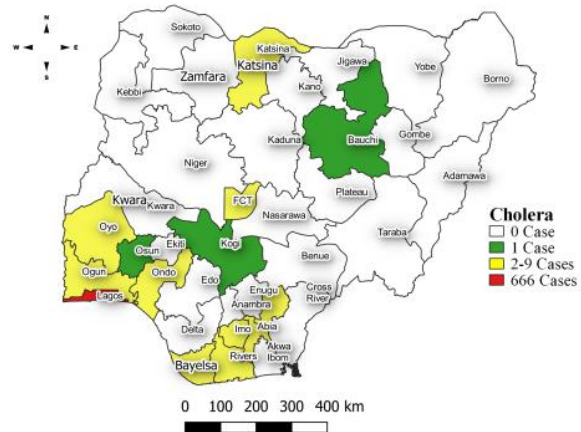


Figure 8: Location of suspected cases of Cholera by State, Nigeria, week 24, 2024



### Key points

- There were 709 suspected cases of Cholera reported from 42 LGAs in 13 states and FCT. There were 27 laboratory confirmed case and 35 deaths were recorded.

### Actions

#### To date

- National Cholera Multi-Sectoral Technical Working Group (TWG) is monitoring all states and supporting affected states.

## Measles

### Week 24

Suspected cases	Confirmed cases	Deaths	Number of States and LGAs affected
115	5	0	State: 24 LGA: 82

### Year to date (week 1 – 24)

Suspected cases		Confirmed cases		Deaths		CFR	
2023	2024	2023	2024	2023	2024	2023	2024
14791	13120	1294	1480	0	61	0%	0.5%

Figure 9: Number of suspected and confirmed cases of Measles, Nigeria, weeks 1 – 24, 2024.

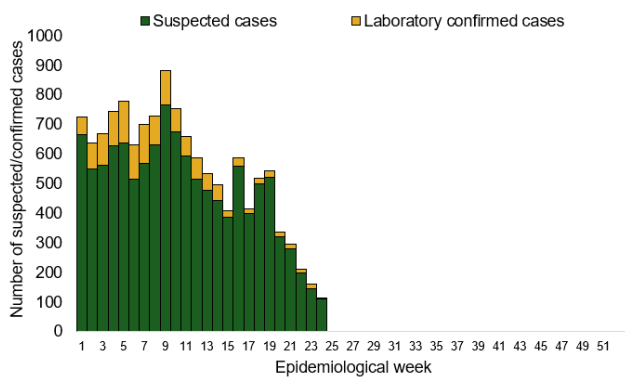
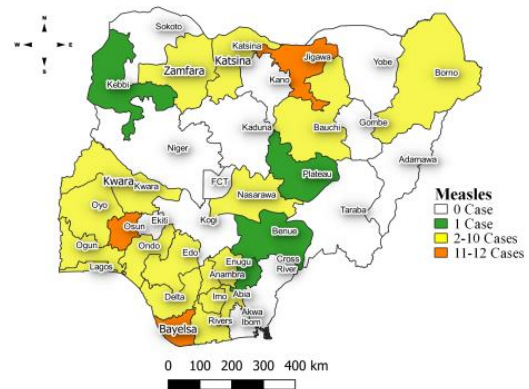


Figure 10: Location of suspected cases of Measles by State, Nigeria, week 24, 2024



### Key points

- There were 115 suspected cases of Measles reported from 82 LGAs in 24 states. There were five laboratory confirmed cases and no death was recorded.

### Actions

#### To date

- National Measles TWG is closely monitoring measles surveillance data and providing feedback to relevant agencies and development partners.

## Mpox

### Week 24

Suspected cases	Confirmed cases	Deaths	Number of States and LGAs affected
25	2	0	State: 11 LGA: 14

### Year to date (week 1 – 24)

Suspected cases		Confirmed cases		Deaths		CFR	
2023	2024	2023	2024	2023	2024	2023	2024
783	631	80	30	2	0	0.3%	0%

Figure 11: Number of suspected and confirmed cases of Mpox, Nigeria, weeks 1 – 24, 2024.

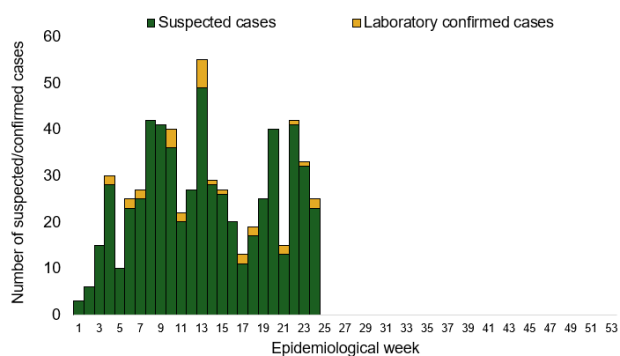
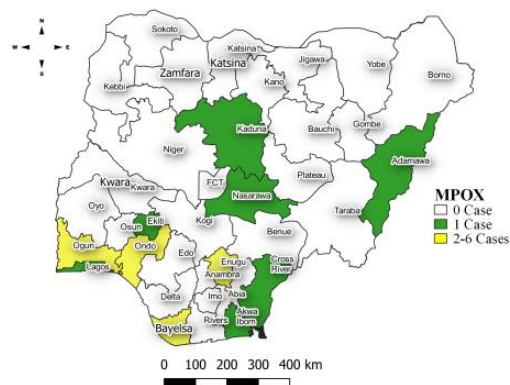


Figure 12: Location of suspected cases of Mpox by State, Nigeria, week 24, 2024



### Key points

- There were 25 suspected cases of Mpox reported from 14 LGAs in 11 states. There was two laboratory confirmed cases and no death was recorded.

### Actions To date

- National Monkeypox Technical Working Group (TWG) is monitoring activities in all states.



## Acute Flaccid Paralysis (AFP)

### Week 24

Suspected cases	Confirmed cases	Deaths	Number of States and LGAs affected
123	0	0	State: 25 LGA: 88

### Year to date (week 1 – 24)

Suspected cases		Confirmed cases		Deaths		CFR	
2023	2024	2023	2024	2023	2024	2023	2024
3433	3487	0	0	0	0	0%	0%

Figure 13: Number of suspected and confirmed cases of AFP, Nigeria, weeks 1 – 24, 2023

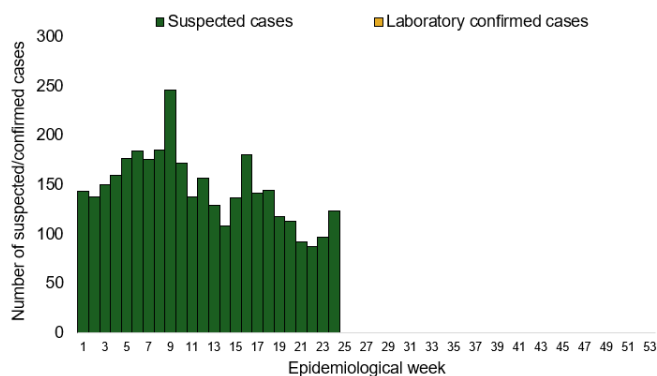
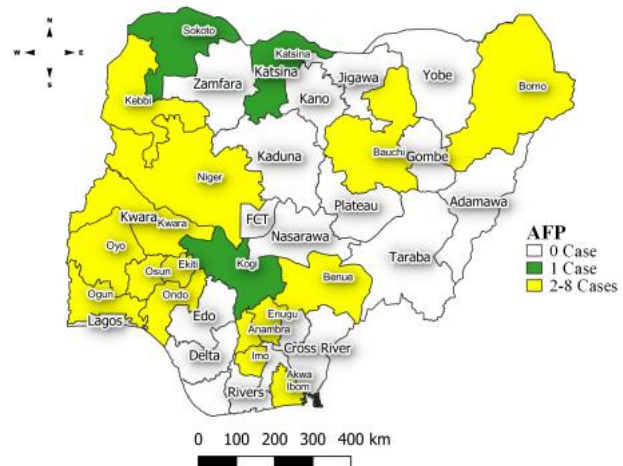


Figure 14: Location of suspected cases of AFP by State, Nigeria, week 24, 2024



### Key points

- There were 123 suspected cases of AFP reported from 88 LGAs in 25 states. There was no laboratory confirmed case and no death was recorded.

## National Influenza Sentinel Surveillance

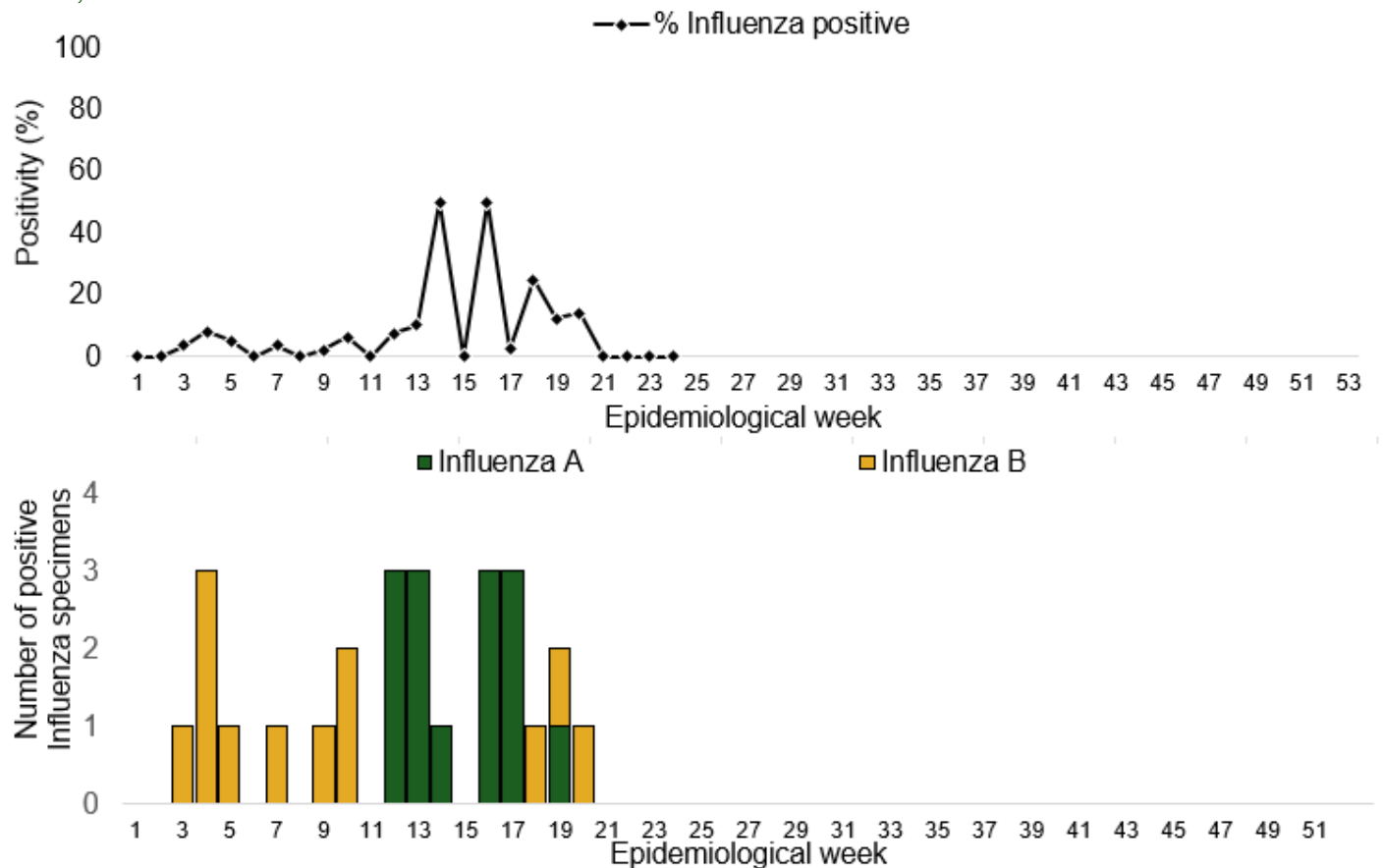
### Week 24

Suspected Cases	Confirmed Cases	Confirmed Case by type	
		Influenza A	Influenza B
7	0	0	0

### Year to date (week 1 – 24)

Suspected cases	Total Confirmed Cases	Confirmed cases by type	
435	26	Influenza A 14	Influenza B 12

Figure 15: Number of influenza positive specimens by type and percentage positive by epidemiological week, 2023.



## Coronavirus Disease (COVID-19)

### Week 24

Suspected cases	Confirmed cases	Deaths	Number of States and LGAs affected
0	0	0	State: 0 LGA: 0

### Year to date (Week 1- 24)

Suspected cases		Confirmed cases		Deaths		CFR	
2023	2024	2023	2024	2023	2024	2023	2024
510	794	510	794	1	1	0.2%	0.1%

Figure 16: Epidemic curve of confirmed cases of COVID-19, Nigeria, week 1 - 24, 2024

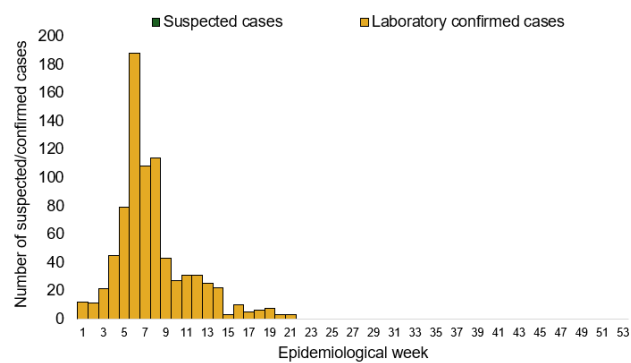
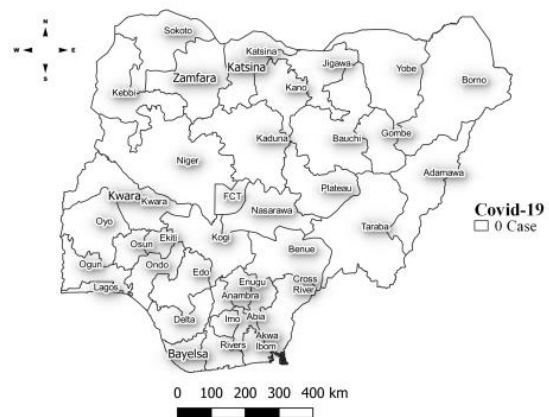


Figure 17: Location of **confirmed** cases of COVID-19 by State, Nigeria, as at week 24, 2024



### Key points

- There was no case reported for the week

## Diphtheria

### Week 24

Suspected cases	Confirmed cases	Deaths	Number of States and LGAs affected
46	24	0	State: 3 LGA: 13

### Year to date (week 1 – 24)

Suspected cases		Confirmed cases		Deaths		CFR	
2023	2024	2023	2024	2023	2024	2023	2024
2516	9086	1188	6001	128	99	5.1%	1.1%

Figure 18: Number of suspected and confirmed cases of Diphtheria, Nigeria, weeks 1 – 24, 2024

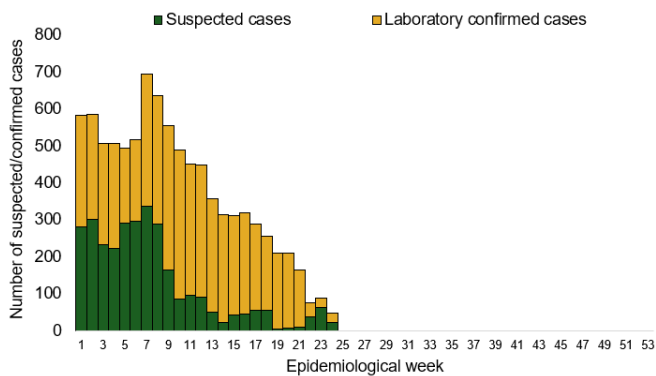
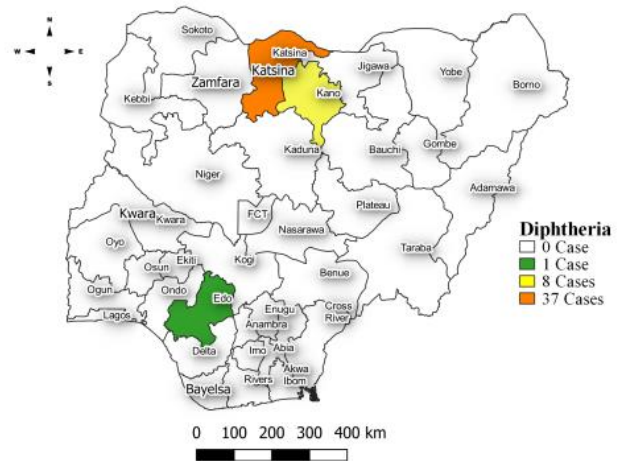


Figure 19: Location of suspected cases of Diphtheria by State, Nigeria, week 24, 2024



### Key points

- There were 46 suspected cases of Diphtheria reported from 13 LGAs in three states. There were 24 confirmed cases and no death was recorded.

### Actions To date

- National Diphtheria Technical Working Group (TWG) is monitoring activities in all states.
- Harmonisation of surveillance and laboratory data from across states and laboratories.
- Provision of off-site surveillance support to affected States.

## Event Based Surveillance (EBS)

### Week 24

#### Key points

##### For the reporting week 24

- 188 Calls were successfully routed to agents and answered
- 4 calls not routed to agents (Failed call)
- 192 total number of calls (successful and failed)
- 0 number of SMS received
- 0 WhatsApp/live chat messages received
- The percentage of failed to total inbound calls 2.1%
- 4 signal was picked and escalated to the Ogun State
  - 1 suspected case of Lassa fever in Abeokuta, Ogun State
  - 3 Cholera confirmed cases of Cholera in Ota, Ogun State

##### For week 1 – 24

- 2,853 calls were successfully routed to agents and answered
- 134 calls not routed to agents (Failed call)
- 2,987 total inbound calls recorded
- The Percentage of failed to total inbound calls: 4.5%
- 37 Signals picked and escalated

#### Categories of Calls

- General inquiries 45
- Hoax call and others 70
- Enquiries on COVID-19 vaccination certificate 8
- Report of health conditions 15
- Inquiry on Lassa fever 8
- Inquiry on malaria vaccine 5
- Health Declaration form-related queries 0
- Inquiries on Diphtheria symptoms, treatment, and Vaccine 12
- Inquiries on yellow fever vaccine 9
- Inquiries on Hepatitis 8
- Inquiries on Lassa fever vaccine 4
- Covid19 vaccination inquiries 9
- Inquiries on employment 3

Figure 20: Number of successful and failed calls, weeks 1 – 24, 2024

