



NIGERIA CENTRE FOR DISEASE
CONTROL AND PREVENTION

Nigeria Centre for Disease Control and Prevention

Protecting the health of Nigerians

Weekly Epidemiological Report

Week 22: 27th May – 2nd June 2024

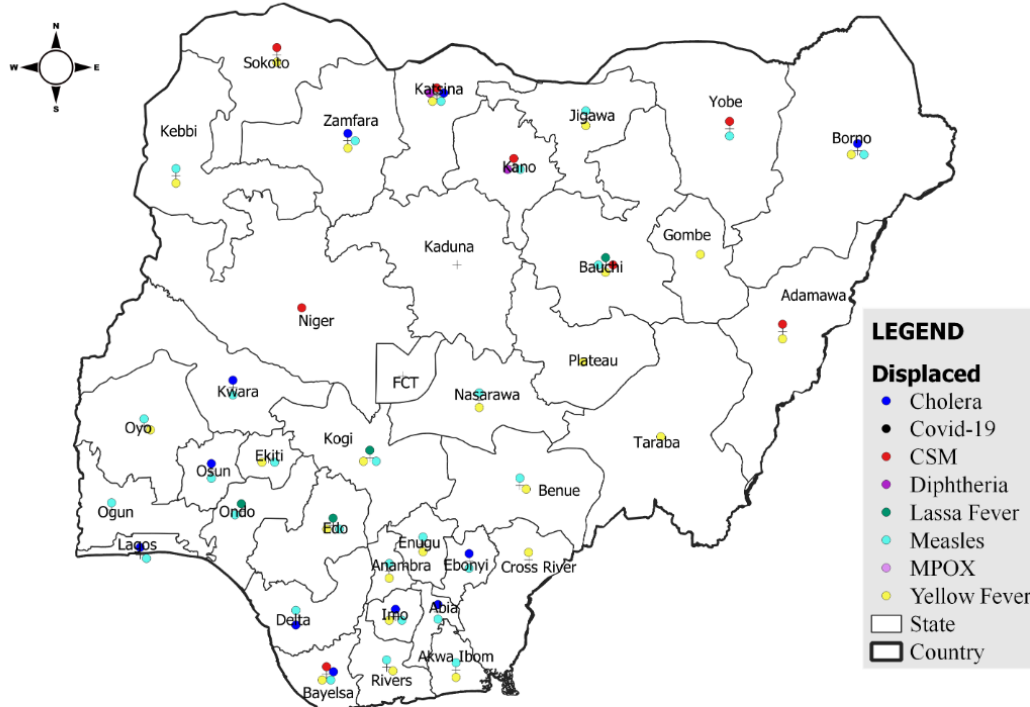
Summary of Incidents

Ongoing incidents

1

Ongoing incidents are defined as confirmed cases where a national EOC or equivalent has been activated (Diphtheria)

Other incidents are those with confirmed cases for which EOC is not activated



Disclaimer:

Summary

Week 22: 27th May – 2nd June 2024

Lassa Fever ^{1,2}	Cerebrospinal Meningitis (CSM) ^{1,4}	Yellow Fever ^{1,4}
128 Suspected case(s)	32 Suspected case(s)	60 Suspected case(s)
10 Confirmed case(s)	0 Confirmed case(s)	0 Confirmed case(s)
0 Death(s)	0 Death(s)	0 Death(s)
Cholera ^{1,4}	Measles ^{1,4}	Mpox ^{1,4}
25 Suspected case(s)	210 Suspected case(s)	42 Suspected case(s)
0 Confirmed case(s)	11 Confirmed case(s)	1 Confirmed case(s)
1 Death(s)	0 Death(s)	0 Death(s)
Acute Flaccid Paralysis (AFP) ^{1,4}	National Sentinel influenza surveillance ⁵	Coronavirus Disease ^{1,}
87 Suspected case(s)	18 Suspected case(s)	0 Suspected case(s)
0 Confirmed case(s)	0 Confirmed case(s)	0 Confirmed case(s)
0		0 Death(s)
Diphtheria ^{1,4}		
76 Suspected case(s)		
40 Confirmed case(s)		
0 Death(s)		

- Information for this disease was retrieved from the Technical Working Group and Situation Reports
- Case Fatality Rate (CFR) for this disease is reported for confirmed cases only.
- CFR for this disease is reported for total cases i.e. suspected + confirmed.
- Information for sentinel influenza was retrieved from the laboratory.

Lassa Fever

Week 22

Suspected cases	Confirmed cases	Deaths	Number of States and LGAs affected
128	10	0	State: 16 + FCT LGA: 28

Year to date (week 1 – 22)

Suspected cases		Confirmed cases		Deaths		CFR	
2023	2024	2023	2024	2023	2024	2023	2024
5882	6592	957	907	164	162	17.1%	18.1%

Figure 1: Number of suspected and confirmed cases of Lassa Fever, Nigeria, Weeks 1 – 22, 2024

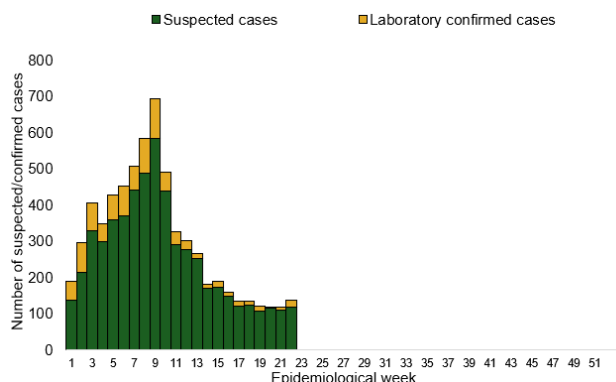
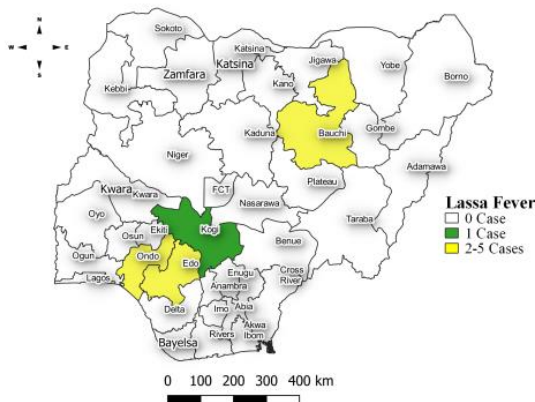


Figure 2: Location of **confirmed** cases of Lassa Fever by State, Nigeria, week 22, 2024



Key points

- There were 128 suspected cases of Lassa Fever reported from 28 LGAs in 16 states and FCT. There were ten laboratory confirmed cases and no death was recorded.

Actions

To date:

- National Lassa fever multi-partner, multi-sectoral Technical Working Group (TWG) continues to coordinate the response activities at all levels.
- Held the 1st Lassa Fever webinar for 2024 focused on “Empowering Communities to Combat Lassa Fever
- Deployed NRRT to 8 states with funds from the Basic Health Care Provision Fund (BHCPF)
- Participated in the Inaugural Meeting of the Community Advisory Board for the Research on Lassa fever phase 2 vaccine trial
- Reviewed the Lassa Fever Advocacy toolkit with support from BA-N

Cerebrospinal Meningitis (CSM)

Week 22

Suspected cases	Confirmed cases	Deaths	Number of States and LGAs affected
32	0	0	State: 8 LGA: 14

Year to date (week 1 – 22)

Suspected cases		Confirmed cases		Deaths		CFR	
2023	2024	2023	2024	2023	2024	2023	2024
1904	2986	72	50	74	128	3.9%	4.3%

Figure 3: Number of suspected and confirmed cases of CSM, Nigeria, weeks 1 – 22, 2024

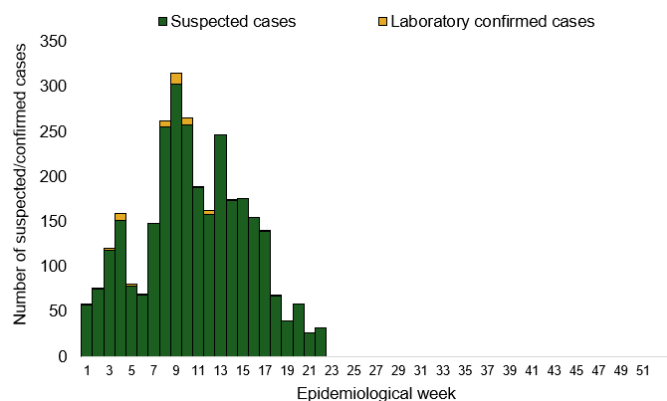
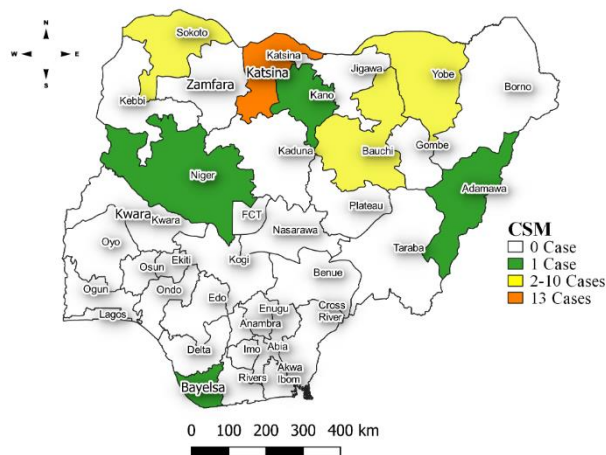


Figure 4: Location of suspected cases of CSM by State, Nigeria, week 22, 2024



Key points

- There were 32 suspected cases of Cerebrospinal meningitis (CSM) reported from 14 LGAs in eight states. There was no laboratory confirmed case and no death was reported.

Actions

To date:

- National CSM TWG meets weekly to review reports from states and plan appropriately.

Yellow Fever

Week 22

Suspected cases	Confirmed cases	Deaths	Number of States and LGAs affected
60	0	0	State: 23 LGA: 45

Year to date (week 1 – 22)

Suspected cases		Confirmed cases		Deaths		CFR	
2023	2024	2023	2024	2023	2024	2023	2024
1317	1339	17	5	6	1	0.4%	0.1%

Figure 5: Number of suspected and confirmed cases of Yellow Fever, Nigeria, weeks 1 – 22, 2024

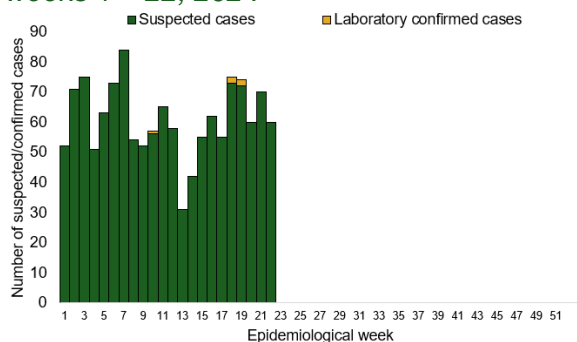
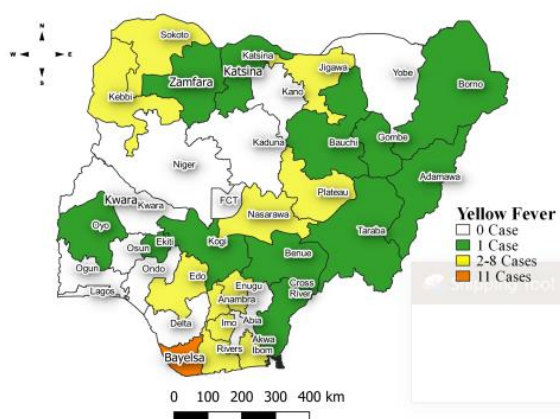


Figure 6: Location of suspected cases of Yellow Fever by States, Nigeria, week 22, 2024



Key points

- There were 60 suspected cases of Yellow Fever (YF) reported from 45 LGAs in 23 states. There was no laboratory confirmed case and no death was recorded.

Actions

To date:

- National YF multi-partner Technical Working Group (TWG) continues to coordinate activities across states.
- Conducted dynamic risk assessment to guide overall preparedness and response strategies.
- Provided off-site support to states to Ondo and Bayelsa states with confirmed cases
- Harmonizing surveillance and laboratory data
- Regular sample testing at the regional reference laboratory
- Coordination of yellow fever sample management and transportation from all states to the regional reference laboratory

Cholera

Week 22

Suspected cases	Confirmed cases	Deaths	Number of States and LGAs affected
25	0	1	State: 11 LGA: 18

Year to date (week 1 – 22)

Suspected cases		Confirmed cases		Deaths		CFR	
2023	2024	2023	2024	2023	2024	2023	2024
2330	1290	32	3	61	25	2.6%	1.9%

Figure 7: Number of suspected and confirmed cases of Cholera, Nigeria, weeks 1 – 22, 2024

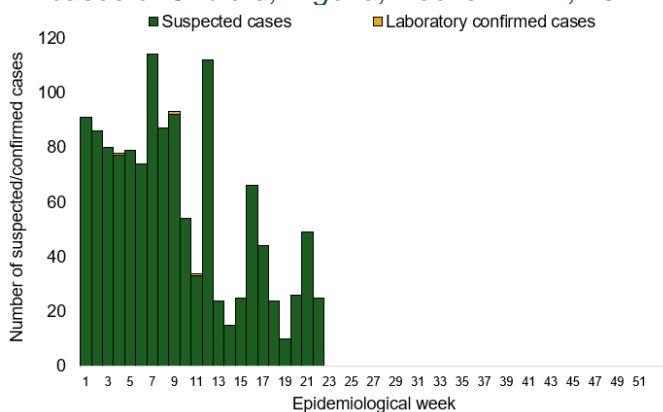
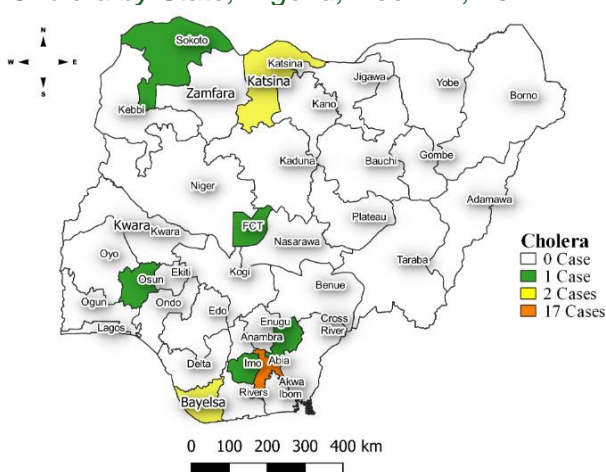


Figure 8: Location of suspected cases of Cholera by State, Nigeria, week 22, 2024



Key points

- There were 25 suspected cases of Cholera reported from 18 LGAs in 11 states. There was no laboratory confirmed case and one death was recorded.

Actions

To date

- National Cholera Multi-Sectoral Technical Working Group (TWG) is monitoring all states and supporting affected states.

Measles

Week 22

Suspected cases	Confirmed cases	Deaths	Number of States and LGAs affected
210	11	0	State: 28 LGA: 101

Year to date (week 1 – 22)

Suspected cases		Confirmed cases		Deaths		CFR	
2023	2024	2023	2024	2023	2024	2023	2024
13856	12844	1242	1459	0	61	0%	0.5%

Figure 9: Number of suspected and confirmed cases of Measles, Nigeria, weeks 1 – 22, 2024.

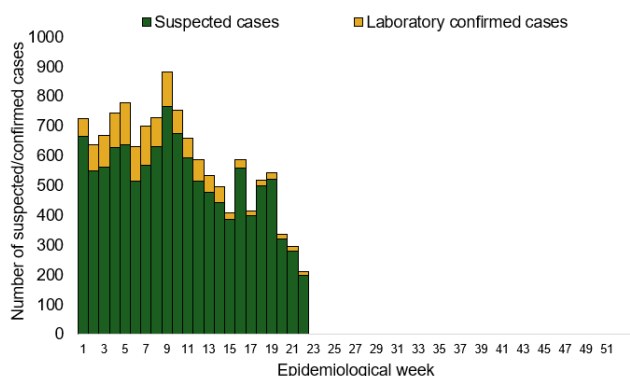
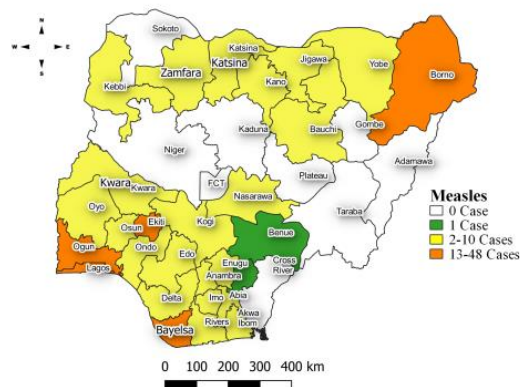


Figure 10: Location of suspected cases of Measles by State, Nigeria, week 22, 2024



Key points

- There were 210 suspected cases of Measles reported from 101 LGAs in 28 states. There were 11 laboratory confirmed cases and no death was recorded.

Actions

To date

- National Measles TWG is closely monitoring measles surveillance data and providing feedback to relevant agencies and development partners.

Mpox

Week 22

Suspected cases	Confirmed cases	Deaths	Number of States and LGAs affected
42	1	0	State: 11 LGA: 21

Year to date (week 1 – 22)

Suspected cases		Confirmed cases		Deaths		CFR	
2023	2024	2023	2024	2023	2024	2023	2024
745	573	79	27	2	0	0.3%	0%

Figure 11: Number of suspected and confirmed cases of Mpox, Nigeria, weeks 1 – 22, 2024.

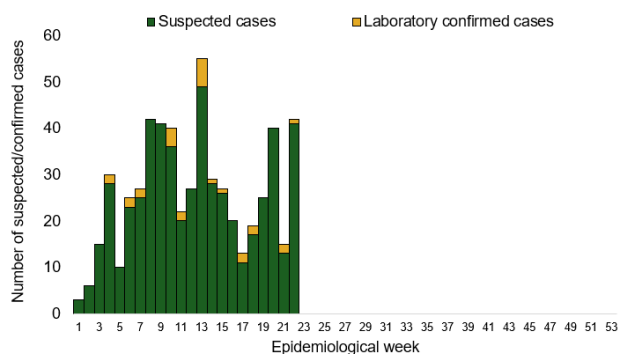
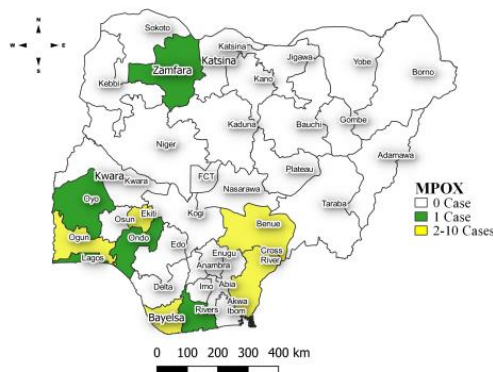


Figure 12: Location of suspected cases of Mpox by State, Nigeria, week 22, 2024



Key points

- There were 42 suspected cases of Mpox reported from 21 LGAs in 11 states. There was one laboratory confirmed case and no death was recorded.

Actions

To date

- National Monkeypox Technical Working Group (TWG) is monitoring activities in all states.

Acute Flaccid Paralysis (AFP)

Week 22

Suspected cases	Confirmed cases	Deaths	Number of States and LGAs affected
87	0	0	State: 23 LGA: 70

Year to date (week 1 – 22)

Suspected cases		Confirmed cases		Deaths		CFR	
2023	2024	2023	2024	2023	2024	2023	2024
3176	3267	0	0	0	0	0%	0%

Figure 13: Number of suspected and confirmed cases of AFP, Nigeria, weeks 1 – 22, 2023

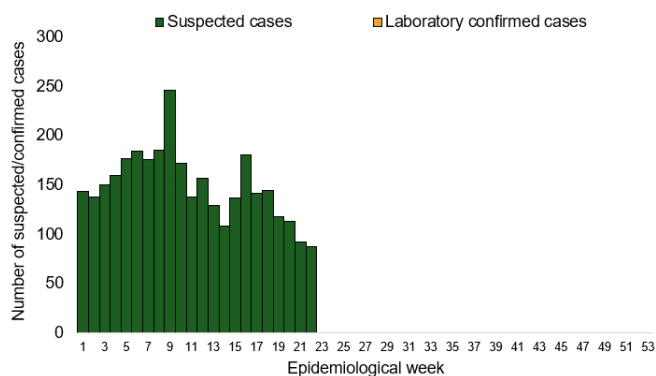
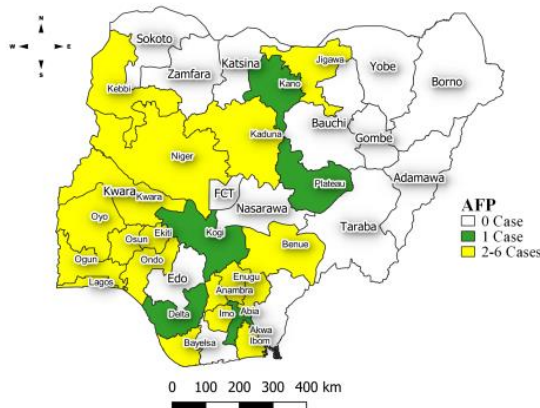


Figure 14: Location of suspected cases of AFP by State, Nigeria, week 22, 2024



Key points

- There were 87 suspected cases of AFP reported from 70 LGAs in 23 states. There was no laboratory confirmed case and no death was recorded.

National Influenza Sentinel Surveillance

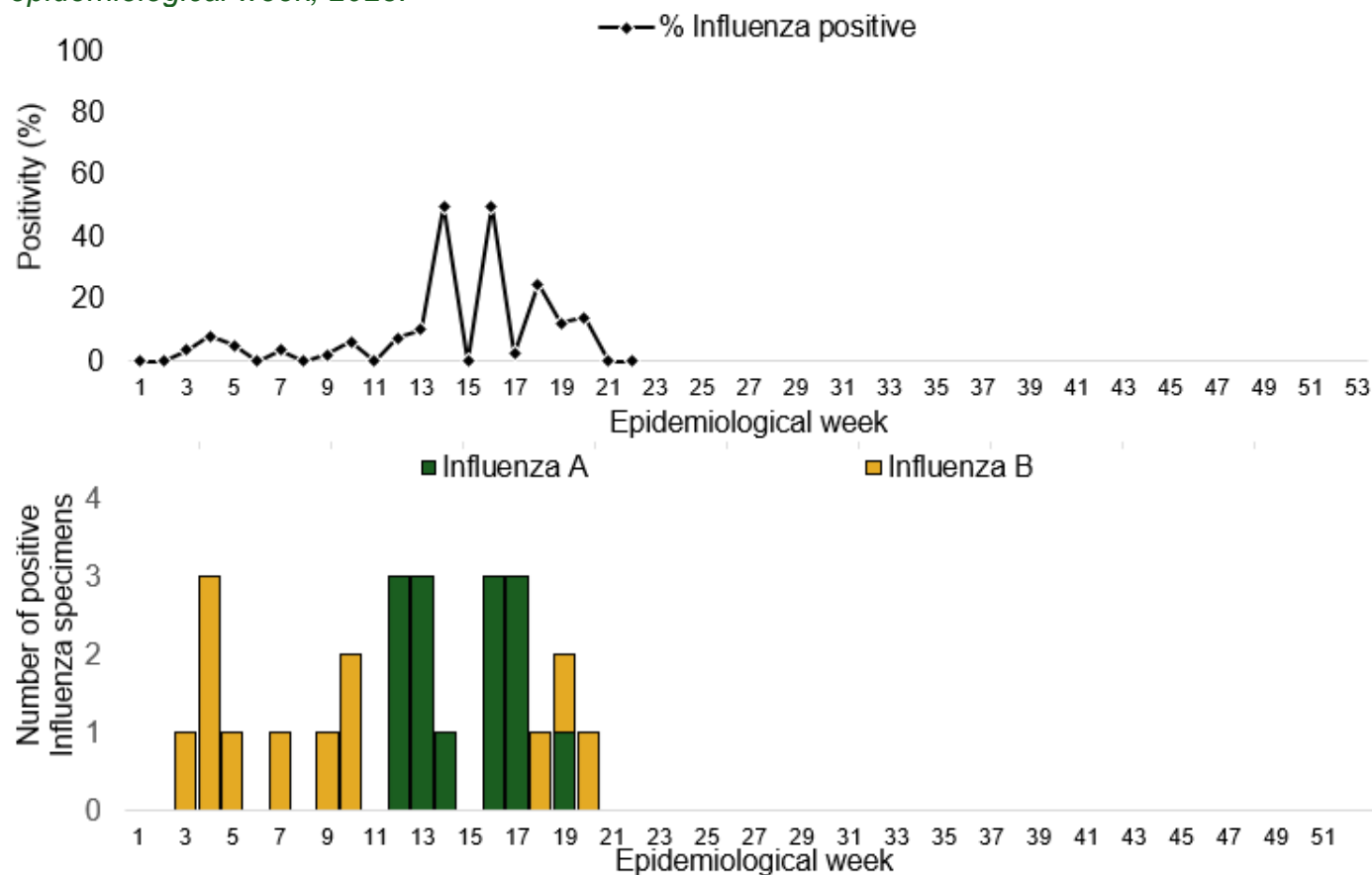
Week 22

Suspected Cases	Confirmed Cases	Confirmed Case by type	
		Influenza A	Influenza B
18	0	0	0

Year to date (week 1 – 22)

Suspected cases	Total Confirmed Cases	Confirmed cases by type	
425	26	Influenza A 14	Influenza B 12

Figure 15: Number of influenza positive specimens by type and percentage positive by epidemiological week, 2023.



Coronavirus Disease (COVID-19)

Week 22

Suspected cases	Confirmed cases	Deaths	Number of States and LGAs affected
0	0	0	State: 0 LGA: 0

Year to date (Week 1- 22)

Suspected cases		Confirmed cases		Deaths		CFR	
2023	2024	2023	2024	2023	2024	2023	2024
492	794	492	794	1	1	0.2%	0.1%

Figure 16: Epidemic curve of confirmed cases of COVID-19, Nigeria, week 1 - 22, 2024

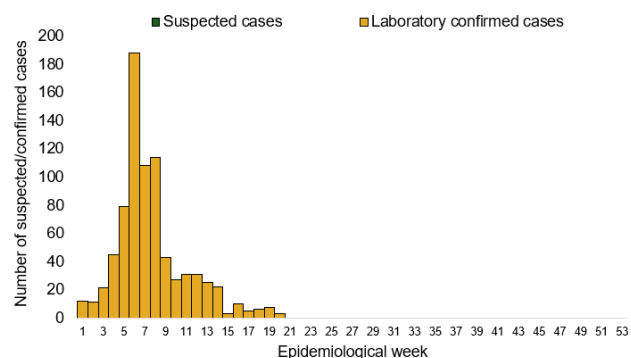
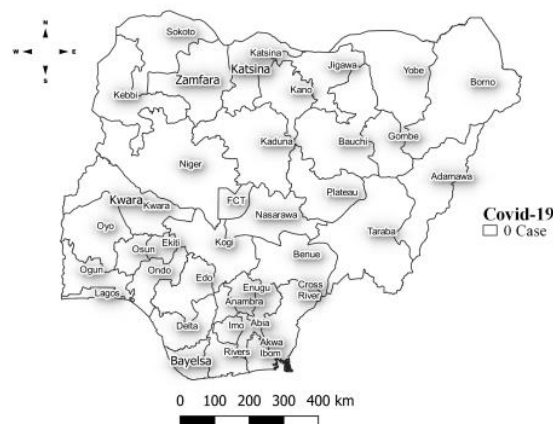


Figure 17: Location of confirmed cases of COVID-19 by State, Nigeria, as at week 22, 2024



Key points

- There was no case reported for the week.

Actions

To date:

Diphtheria

Week 22

Suspected cases	Confirmed cases	Deaths	Number of States and LGAs affected
76	40	0	State: 2 LGA: 19

Year to date (week 1 – 22)

Suspected cases		Confirmed cases		Deaths		CFR	
2023	2024	2023	2024	2023	2024	2023	2024
2278	8953	1130	5953	119	99	5.2%	1.1%

Figure 18: Number of suspected and confirmed cases of Diphtheria, Nigeria, weeks 1 – 22, 2024

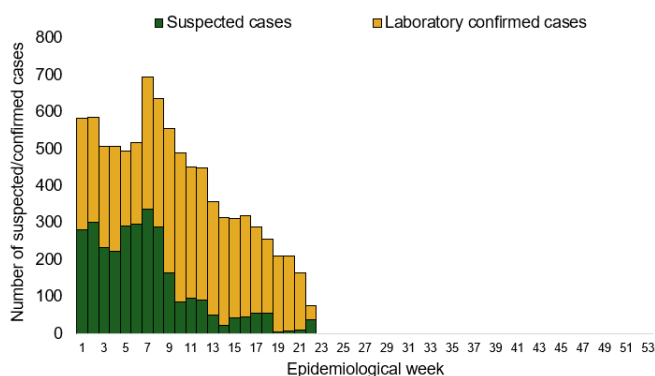
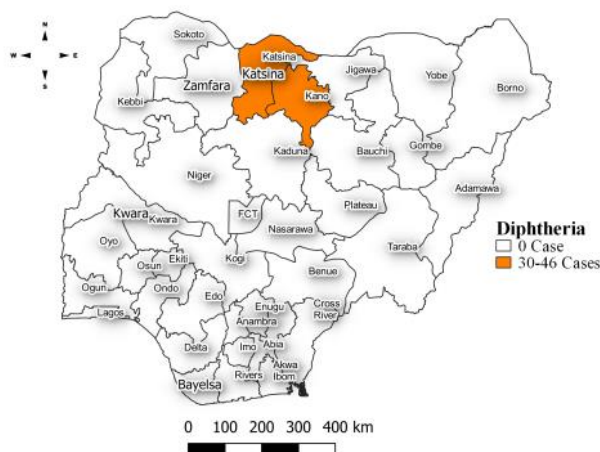


Figure 19: Location of suspected cases of Diphtheria by State, Nigeria, week 22, 2024



Key points

- There were 76 suspected cases of Diphtheria reported from 19 LGAs in two states. There were 40 confirmed cases and no death was recorded.

Actions

To date

- National Diphtheria Technical Working Group (TWG) is monitoring activities in all states.

Planned:

- Harmonisation of surveillance and laboratory data from across states and laboratories.
- Provision of off-site surveillance support to affected States.

Event Based Surveillance (EBS)

Week 22

Key points

For the reporting week 22

- 111 Calls were successfully routed to agents and answered
- 1 call not routed to agents (Failed call)
- 112 total number of calls (successful and failed)
- 0 number of SMS received
- 0 WhatsApp/live chat messages received
- The percentage of failed to total inbound calls 0.9%
- 1 signal was picked and escalated to Oyo State
 - Suspected Monkeypox case from Ibadan, Oyo state

For week 1 – 22

- 2,508 calls were successfully routed to agents and answered
- 116 calls not routed to agents (Failed call)
- 2,624 total inbound calls recorded
- The Percentage of failed to total inbound calls: 4.4%
- 33 Signals picked and escalated

Categories of Calls

- General inquiries 15
- Hoax call and others 85
- Enquiries on COVID-19 vaccination certificate 7
- Report of health conditions 0
- Inquiry on Lassa fever 0
- Inquiry on malaria vaccine 0
- Health Declaration form-related queries 0
- Inquiries on Diphtheria symptoms, treatment, and Vaccine 3
- Inquiries on yellow fever vaccine 0
- Inquiries on Hepatitis 0
- Inquiries on Lassa fever vaccine 0
- Covid19 vaccination inquiries 0
- Inquiries on employment 1

Figure 20: Number of successful and failed calls, weeks 1 – 21, 2024

