



NIGERIA CENTRE FOR DISEASE CONTROL AND PREVENTION

Nigeria Centre for Disease Control and Prevention

Protecting the health of Nigerians

Weekly Epidemiological Report

Week 21: 20th – 26th May 2024

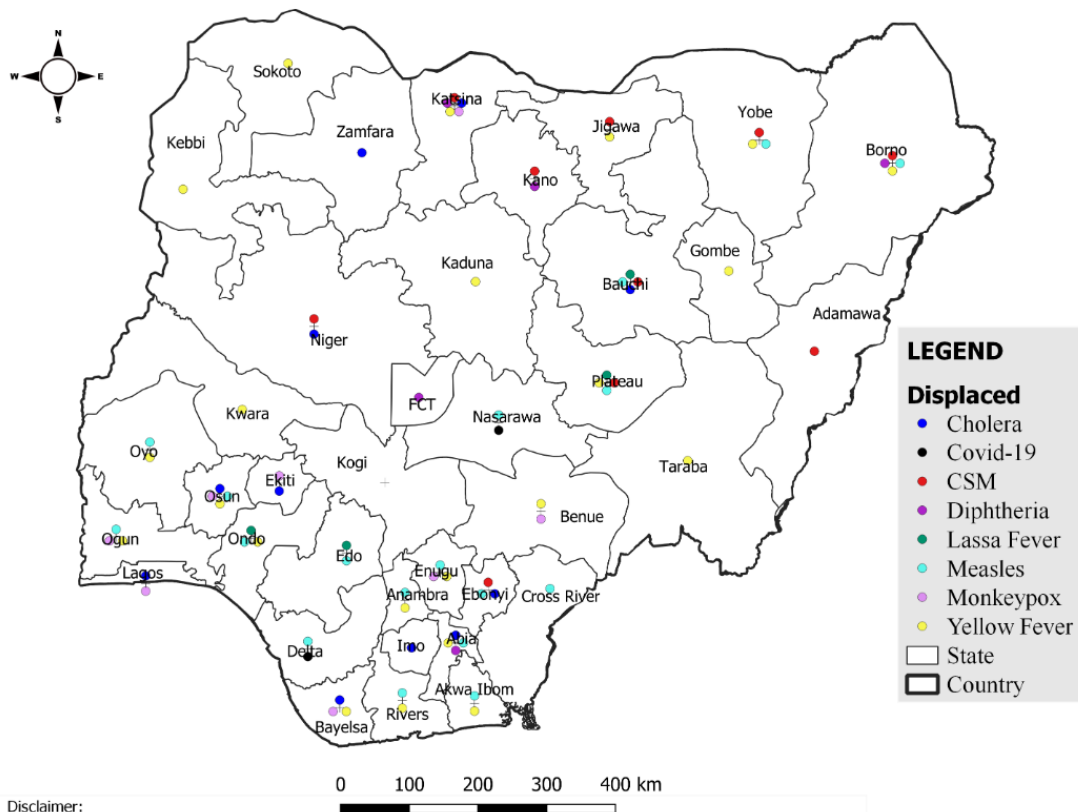
Summary of Incidents

Ongoing incidents

1

Ongoing incidents are defined as confirmed cases where a national EOC or equivalent has been activated (Diphtheria)

Other incidents are those with confirmed cases for which EOC is not activated



Summary

Week 21: 20th – 26th May 2024

Lassa Fever ^{1,2}	Cerebrospinal Meningitis (CSM) ^{1,4}	Yellow Fever ^{1,4}
119 Suspected case(s)	27 Suspected case(s)	70 Suspected case(s)
10 Confirmed case(s)	0 Confirmed case(s)	0 Confirmed case(s)
0 Death(s)	0 Death(s)	0 Death(s)
Cholera ^{1,4}	Measles ^{1,4}	Mpox ^{1,4}
49 Suspected case(s)	297 Suspected case(s)	15 Suspected case(s)
0 Confirmed case(s)	17 Confirmed case(s)	2 Confirmed case(s)
0 Death(s)	0 Death(s)	0 Death(s)
Acute Flaccid Paralysis (AFP) ^{1,4}	National Sentinel influenza surveillance ⁵	Coronavirus Disease ^{1,}
92 Suspected case(s)	4 Suspected case(s)	3 Suspected case(s)
0 Confirmed case(s)	0 Confirmed case(s)	3 Confirmed case(s)
0		0 Death(s)
Diphtheria ^{1,4}		
164 Suspected case(s)		
155 Confirmed case(s)		
0 Death(s)		

1. Information for this disease was retrieved from the Technical Working Group and Situation Reports
2. Case Fatality Rate (CFR) for this disease is reported for confirmed cases only.
3. CFR for this disease is reported for total cases i.e. suspected + confirmed.
4. Information for sentinel influenza was retrieved from the laboratory.

Lassa Fever

Week 21

Suspected cases	Confirmed cases	Deaths	Number of States and LGAs affected
119	10	0	State: 14 LGA: 18

Year to date (week 1 – 21)

Suspected cases		Confirmed cases		Deaths		CFR	
2023	2024	2023	2024	2023	2024	2023	2024
5731	6464	951	897	163	162	17.1%	18.1%

Figure 1: Number of suspected and confirmed cases of Lassa Fever, Nigeria, Weeks 1 – 21, 2024

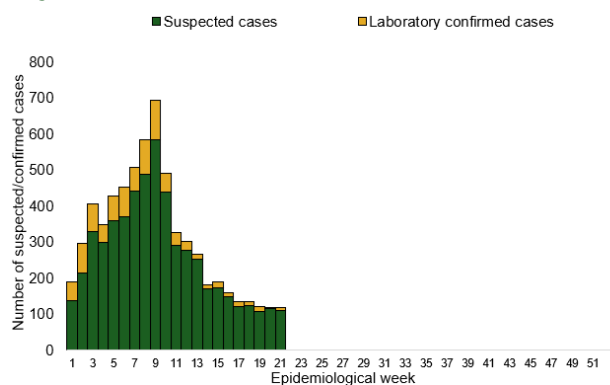
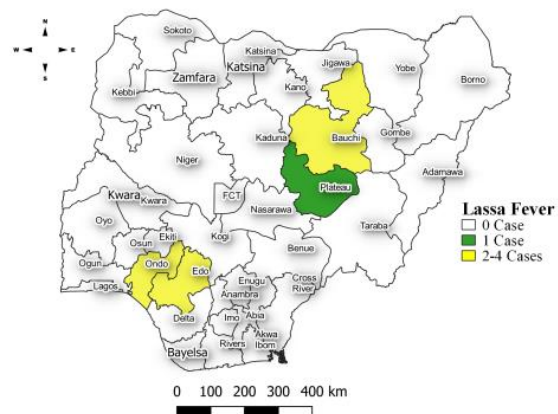


Figure 2: Location of **confirmed** cases of Lassa Fever by State, Nigeria, week 21, 2024



Key points

- There were 119 suspected cases of Lassa Fever reported from 18 LGAs in 14 states. There were ten laboratory confirmed cases and no death was recorded.

Actions

To date:

- National Lassa fever multi-partner, multi-sectoral Technical Working Group (TWG) continues to coordinate the response activities at all levels.

Planned:

- Continuous collaboration and engagement with all partners at all levels of Government in the implementation of the approved recommendations of the Risk assessment

Cerebrospinal Meningitis (CSM)

Week 21

Suspected cases	Confirmed cases	Deaths	Number of States and LGAs affected
27	0	0	State: 6 LGA: 13

Year to date (week 1 – 21)

Suspected cases		Confirmed cases		Deaths		CFR	
2023	2024	2023	2024	2023	2024	2023	2024
1897	2954	72	50	74	128	3.9%	4.3%

Figure 3: Number of suspected and confirmed cases of CSM, Nigeria, weeks 1 – 21, 2024

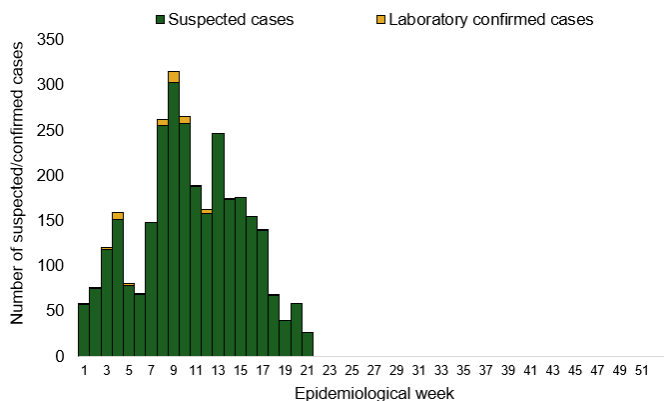
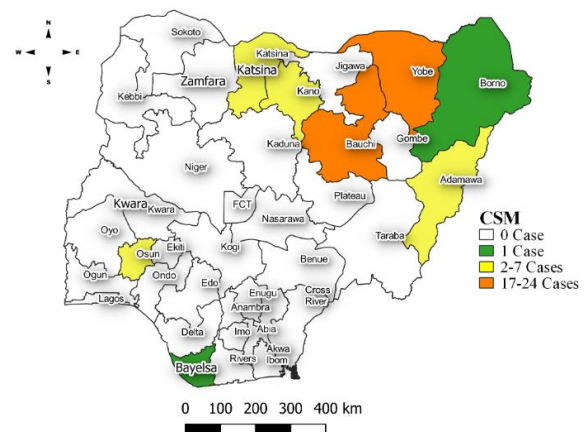


Figure 4: Location of suspected cases of CSM by State, Nigeria, week 21, 2024



Key points

- There were 27 suspected cases of Cerebrospinal meningitis (CSM) reported from 13 LGAs in six states. There was no laboratory confirmed case and no death was reported.

Actions

To date:

- National CSM TWG meets weekly to review reports from states and plan appropriately.

Yellow Fever

Week 21

Suspected cases	Confirmed cases	Deaths	Number of States and LGAs affected
70	0	0	State: 22 LGA: 46

Year to date (week 1 – 21)

Suspected cases		Confirmed cases		Deaths		CFR	
2023	2024	2023	2024	2023	2024	2023	2024
1247	1279	16	5	5	1	0.4%	0.1%

Figure 5: Number of suspected and confirmed cases of Yellow Fever, Nigeria, weeks 1 – 21, 2024

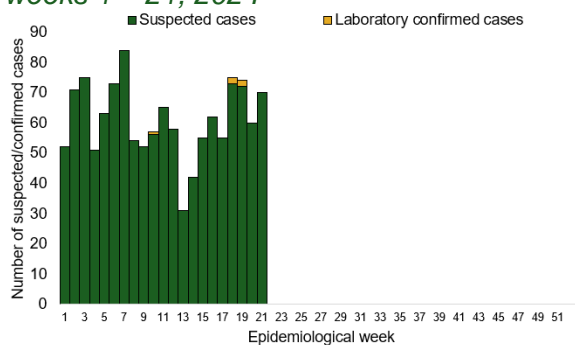
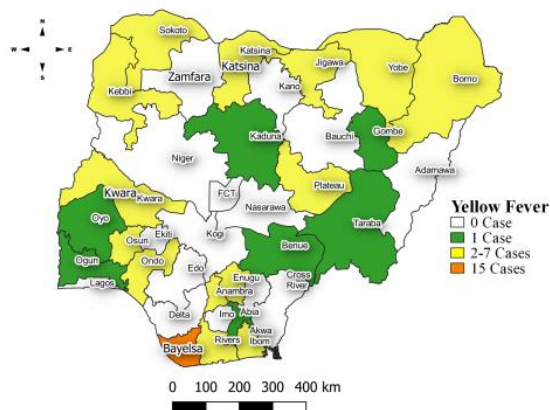


Figure 6: Location of suspected cases of Yellow Fever by States, Nigeria, week 21, 2024



Key points

- There were 70 suspected cases of Yellow Fever (YF) reported from 46 LGAs in 22 states. There was no laboratory confirmed case and no death was recorded.

Actions

To date:

- National YF multi-partner Technical Working Group (TWG) continues to coordinate activities across states.
- Harmonizing surveillance and laboratory data
- Following up with the state surveillance teams for early reporting of cases
- Coordination of yellow fever sample management and transportation from all states to the regional reference laboratories
- Regular testing of yellow fever samples in all the testing laboratories

Cholera

Week 21

Suspected cases	Confirmed cases	Deaths	Number of States and LGAs affected
49	0	0	State: 11 LGA: 17

Year to date (week 1 – 21)

Suspected cases		Confirmed cases		Deaths		CFR	
2023	2024	2023	2024	2023	2024	2023	2024
2305	1265	32	3	61	24	2.6%	1.9%

Figure 7: Number of suspected and confirmed cases of Cholera, Nigeria, weeks 1 – 21, 2024

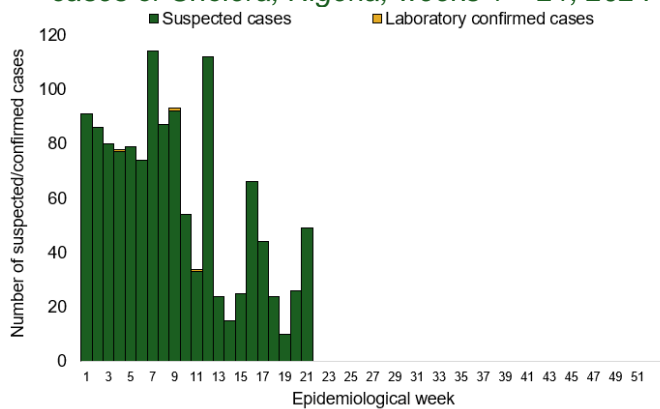
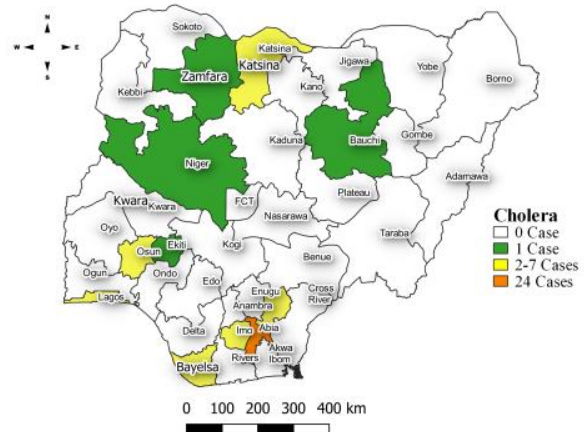


Figure 8: Location of suspected cases of Cholera by State, Nigeria, week 21, 2024



Key points

- There were 49 suspected cases of Cholera reported from 17 LGAs in 11 states. There was no laboratory confirmed case and one death was recorded.

Actions To date

- National Cholera Multi-Sectoral Technical Working Group (TWG) is monitoring all states and supporting affected states.

Measles

Week 21

Suspected cases	Confirmed cases	Deaths	Number of States and LGAs affected
297	17	0	State: 25 LGA: 125

Year to date (week 1 – 21)

Suspected cases		Confirmed cases		Deaths		CFR	
2023	2024	2023	2024	2023	2024	2023	2024
13335	12634	1215	1448	0	61	0%	0.5%

Figure 9: Number of suspected and confirmed cases of Measles, Nigeria, weeks 1 – 21, 2024.

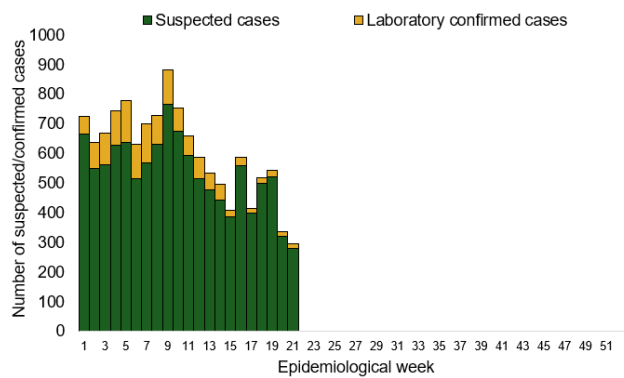
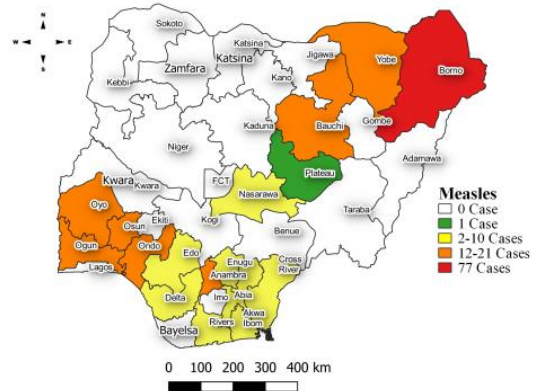


Figure 10: Location of suspected cases of Measles by State, Nigeria, week 21, 2024



Key points

- There were 297 suspected cases of Measles reported from 125 LGAs in 25 states. There were 17 laboratory confirmed cases and no death was recorded.

Actions

To date

- National Measles TWG is closely monitoring measles surveillance data and providing feedback to relevant agencies and development partners.

Mpox

Week 21

Suspected cases	Confirmed cases	Deaths	Number of States and LGAs affected
15	2	0	State: 8 LGA: 10

Year to date (week 1 – 21)

Suspected cases		Confirmed cases		Deaths		CFR	
2023	2024	2023	2024	2023	2024	2023	2024
718	531	79	26	2	0	0.3%	0%

Figure 11: Number of suspected and confirmed cases of Mpox, Nigeria, weeks 1 – 21, 2024.

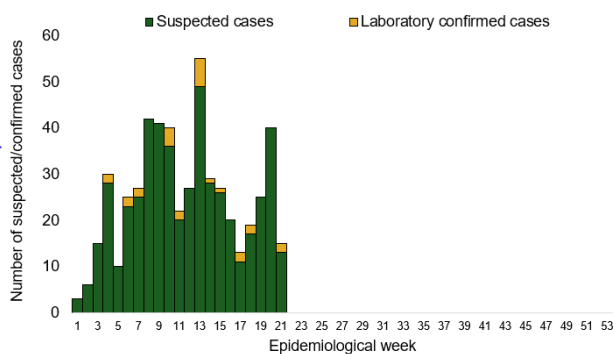
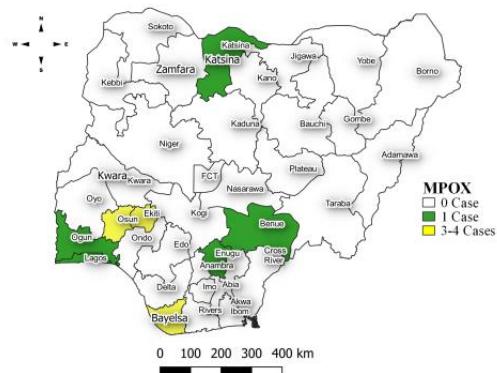


Figure 12: Location of suspected cases of Mpox by State, Nigeria, week 21, 2024



Key points

- There were 15 suspected cases of Mpox reported from 10 LGAs in eight states. There was two laboratory confirmed cases and no death was recorded.

Actions To date

- National Monkeypox Technical Working Group (TWG) is monitoring activities in all states.

Acute Flaccid Paralysis (AFP)

Week 21

Suspected cases	Confirmed cases	Deaths	Number of States and LGAs affected
92	0	0	State: 27 LGA: 72

Year to date (week 1 – 21)

Suspected cases		Confirmed cases		Deaths		CFR	
2023	2024	2023	2024	2023	2024	2023	2024
3032	3180	0	0	0	0	0%	0%

Figure 13: Number of suspected and confirmed cases of AFP, Nigeria, weeks 1 – 21, 2023

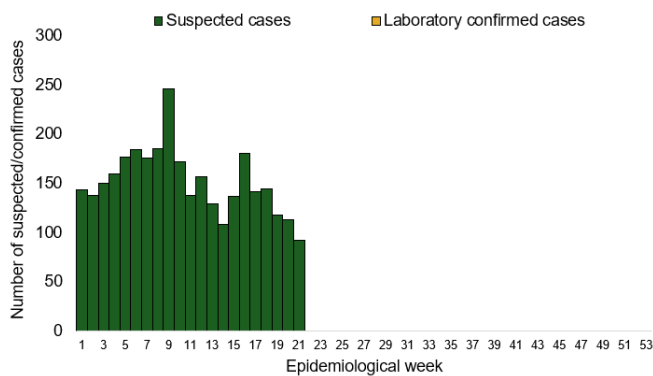
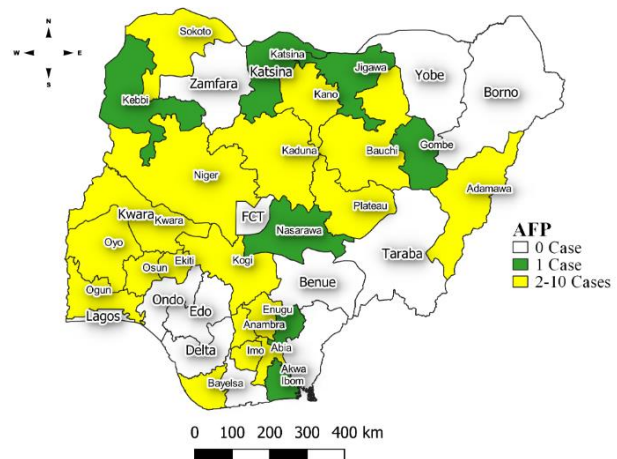


Figure 14: Location of suspected cases of AFP by State, Nigeria, week 21, 2024



Key points

- There were 92 suspected cases of AFP reported from 72 LGAs in 27 states. There was no laboratory confirmed case and no death was recorded.

National Influenza Sentinel Surveillance

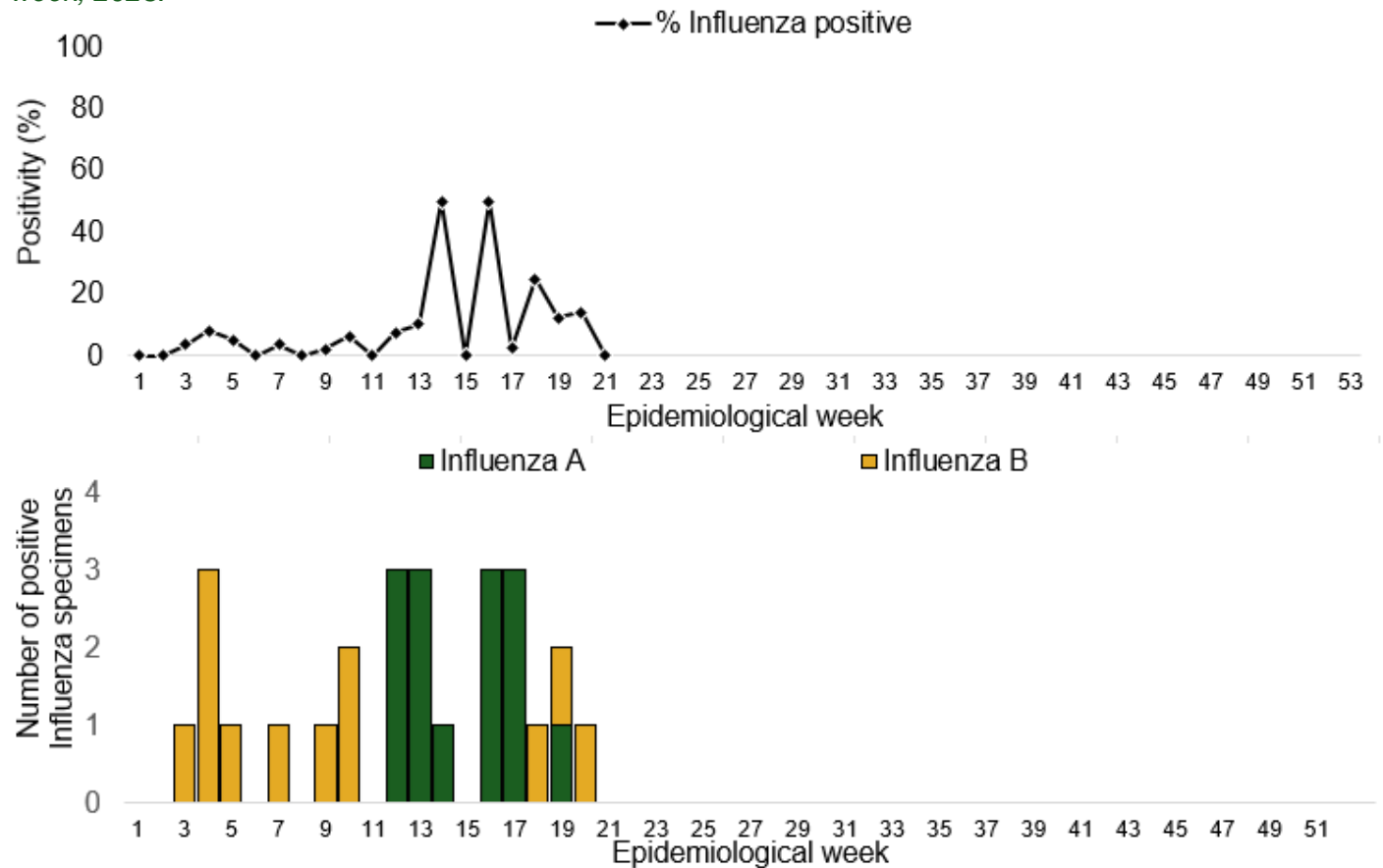
Week 21

Suspected Cases	Confirmed Cases	Confirmed Case by type	
		Influenza A	Influenza B
4	0	0	0

Year to date (week 1 – 21)

Suspected cases	Total Confirmed Cases	Confirmed cases by type	
407	26	Influenza A 14	Influenza B 12

Figure 15: Number of influenza positive specimens by type and percentage positive by epidemiological week, 2023.



Coronavirus Disease (COVID-19)

Week 21

Suspected cases	Confirmed cases	Deaths	Number of States and LGAs affected
3	3	0	State: 2 LGA: 2

Year to date (Week 1- 21)

Suspected cases		Confirmed cases		Deaths		CFR	
2023	2024	2023	2024	2023	2024	2023	2024
484	794	484	794	1	1	0.2%	0.1%

Figure 16: Epidemic curve of confirmed cases of COVID-19, Nigeria, week 1 - 21, 2024

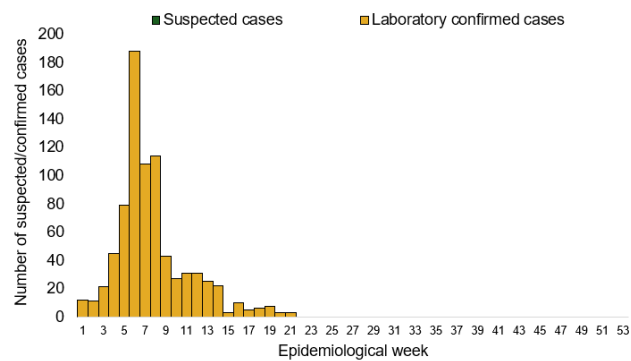
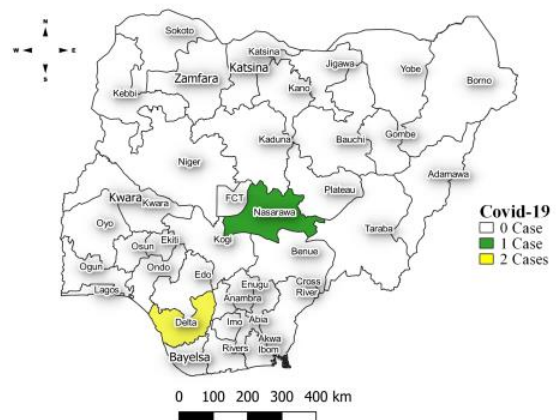


Figure 17: Location of confirmed cases of COVID-19 by State, Nigeria, as at week 21, 2024



Key points

- There were three suspected cases of Covid 19 reported from two LGAs in Delta and Nasarawa states. There were three confirmed cases and no death was recorded

Actions

To date:

- Multi-sectoral Public Health Emergency Operation Centres (PHEOC) activated at the National and affected States

Diphtheria

Week 21

Suspected cases	Confirmed cases	Deaths	Number of States and LGAs affected
164	155	0	State: 4 + FCT LGA: 28

Year to date (week 1 – 21)

Suspected cases		Confirmed cases		Deaths		CFR	
2023	2024	2023	2024	2023	2024	2023	2024
2219	8877	1109	5913	117	99	5.3%	1.1%

Figure 18: Number of suspected and confirmed cases of Diphtheria, Nigeria, weeks 1 – 21, 2024

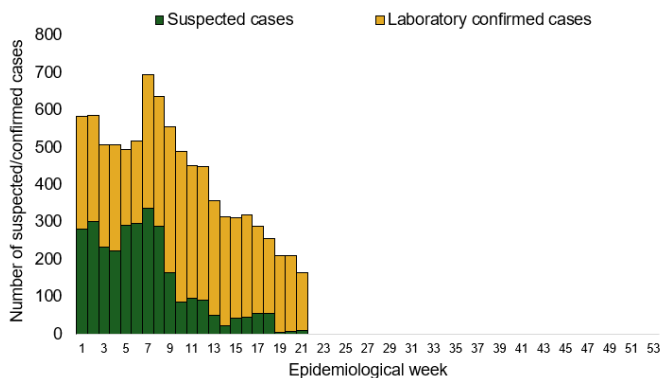
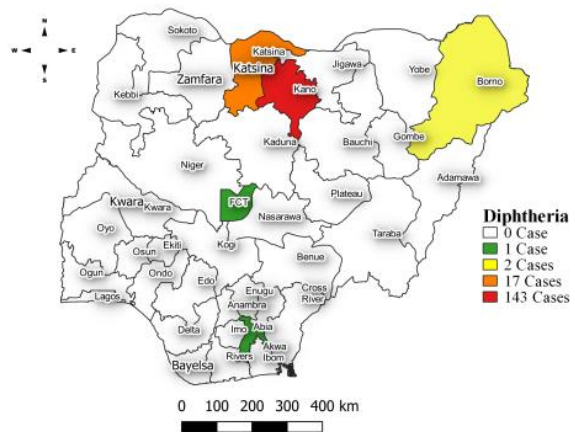


Figure 19: Location of suspected cases of Diphtheria by State, Nigeria, week 21, 2024



Key points

- There were 164 suspected cases of Diphtheria reported from 28 LGAs in four states and FCT. There were 155 confirmed cases and no death was recorded.

Actions

To date

- National Diphtheria Technical Working Group (TWG) is monitoring activities in all states.
- Harmonisation of surveillance and laboratory data from across states and laboratories.
- Provision of off-site surveillance support to affected States.

Event Based Surveillance (EBS)

Week 21

Key points

For the reporting week 21

- 78 Calls were successfully routed to agents and answered
- 2 calls not routed to agents (Failed call)
- 80 total number of calls (successful and failed)
- 0 number of SMS received
- 0 WhatsApp/live chat messages received
- The percentage of failed to total inbound calls 2.5%
- No signal was picked 14

For week 1 – 21

- 2,397 calls were successfully routed to agents and answered
- 115 calls not routed to agents (Failed call)
- 2,512 total inbound calls recorded
- The Percentage of failed to total inbound calls: 4.6%
- 32 Signals picked and escalated to the States

Categories of Calls

- General inquiries 10
- Hoax call and others 60
- Enquiries on COVID-19 vaccination certificate 7
- Report of health conditions 0
- Inquiry on Lassa fever 0
- Inquiry on malaria vaccine 0
- Health Declaration form-related queries 0
- Inquiries on Diphtheria symptoms, treatment, and Vaccine 1
- Inquiries on yellow fever vaccine 0
- Inquiries on Hepatitis 0
- Inquiries on Lassa fever vaccine 0
- Covid19 vaccination inquiries 0
- Inquiries on employment 0

Figure 20: Number of successful and failed calls, weeks 1 – 21, 2024

