



NIGERIA CENTRE FOR DISEASE CONTROL AND PREVENTION

Nigeria Centre for Disease Control and Prevention

Protecting the health of Nigerians

Weekly Epidemiological Report

Week 20: 13th – 19th May 2024

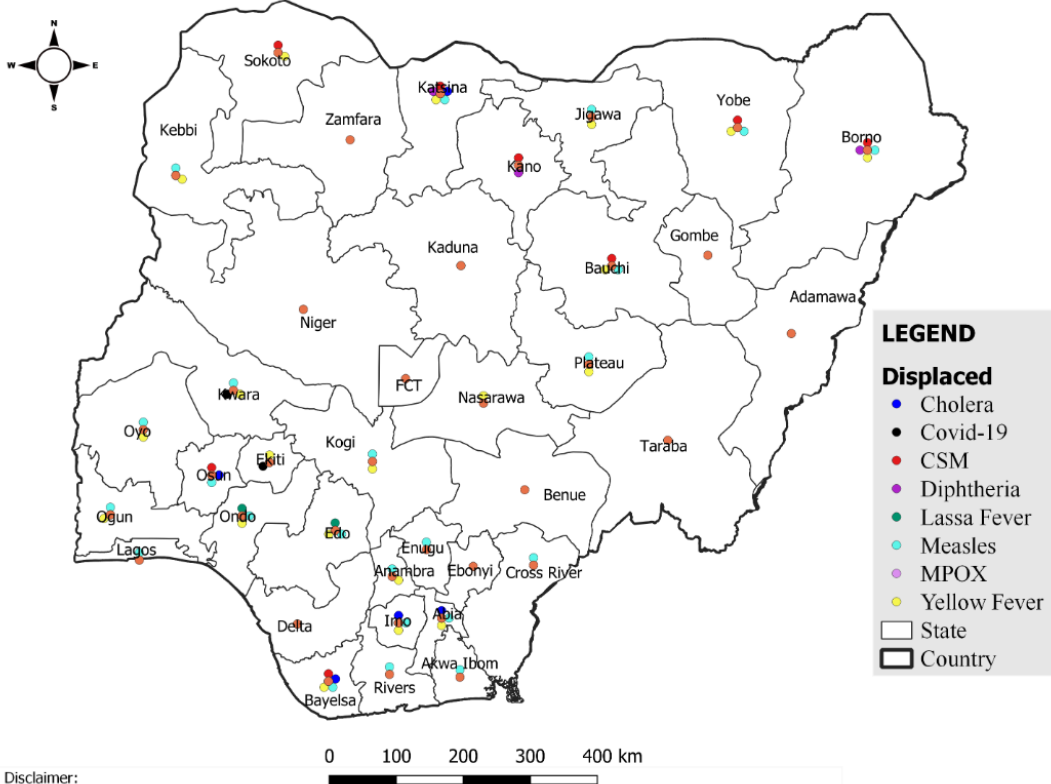
Summary of Incidents

Ongoing incidents

1

Ongoing incidents are defined as confirmed cases where a national EOC or equivalent has been activated (Diphtheria)

Other incidents are those with confirmed cases for which EOC is not activated



Summary

Week 20: 13th – 19th May 2024

Lassa Fever ^{1,2}	Cerebrospinal Meningitis (CSM) ^{1,4}	Yellow Fever ^{1,4}
119 Suspected case(s)	59 Suspected case(s)	60 Suspected case(s)
4 Confirmed case(s)	0 Confirmed case(s)	0 Confirmed case(s)
2 Death(s)	0 Death(s)	0 Death(s)
Cholera ^{1,4}	Measles ^{1,4}	Mpox ^{1,4}
26 Suspected case(s)	336 Suspected case(s)	40 Suspected case(s)
0 Confirmed case(s)	16 Confirmed case(s)	0 Confirmed case(s)
0 Death(s)	0 Death(s)	0 Death(s)
Acute Flaccid Paralysis (AFP) ^{1,4}	National Sentinel influenza surveillance ⁵	Coronavirus Disease ^{1,}
113 Suspected case(s)	7 Suspected case(s)	3 Suspected case(s)
0 Confirmed case(s)	0 Confirmed case(s)	3 Confirmed case(s)
0		0 Death(s)
Diphtheria ^{1,4}		
210 Suspected case(s)		
204 Confirmed case(s)		
0 Death(s)		

- Information for this disease was retrieved from the Technical Working Group and Situation Reports
- Case Fatality Rate (CFR) for this disease is reported for confirmed cases only.
- CFR for this disease is reported for total cases i.e. suspected + confirmed.
- Information for sentinel influenza was retrieved from the laboratory.

Lassa Fever

Week 20

Suspected cases	Confirmed cases	Deaths	Number of States and LGAs affected
119	4	2	State: 11 + FCT LGA: 13

Year to date (week 1 – 20)

Suspected cases		Confirmed cases		Deaths		CFR	
2023	2024	2023	2024	2023	2024	2023	2024
5593	6345	944	887	162	162	17.2%	18.3%

Figure 1: Number of suspected and confirmed cases of Lassa Fever, Nigeria, Weeks 1 – 20, 2024

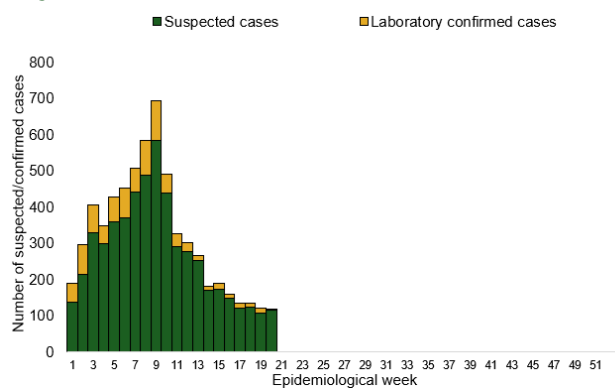
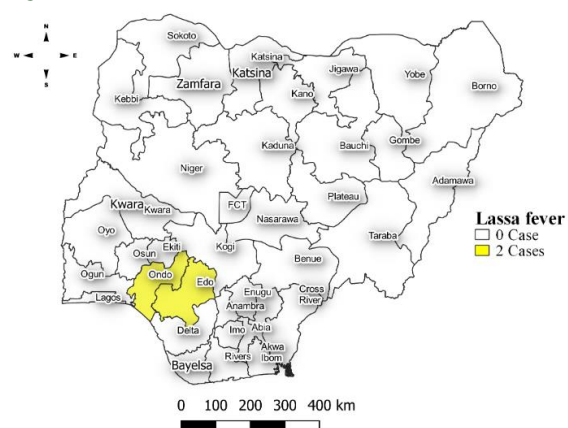


Figure 2: Location of **confirmed** cases of Lassa Fever by State, Nigeria, week 20, 2024



Key points

- There were 119 suspected cases of Lassa Fever reported from 13 LGAs in 11 states and FCT. There were four laboratory confirmed cases and two deaths were recorded.

Actions

To date:

- National Lassa fever multi-partner, multi-sectoral Technical Working Group (TWG) continues to coordinate the response activities at all levels.
- Continuous collaboration and engagement with all partners at all levels of Government in the implementation of the approved recommendations of the Risk assessment

Cerebrospinal Meningitis (CSM)

Week 20

Suspected cases	Confirmed cases	Deaths	Number of States and LGAs affected
59	0	0	State: 8 LGA: 17

Year to date (week 1 – 20)

Suspected cases		Confirmed cases		Deaths		CFR	
2023	2024	2023	2024	2023	2024	2023	2024
1887	2927	72	50	74	128	3.9%	4.4%

Figure 3: Number of suspected and confirmed cases of CSM, Nigeria, weeks 1 – 20, 2024

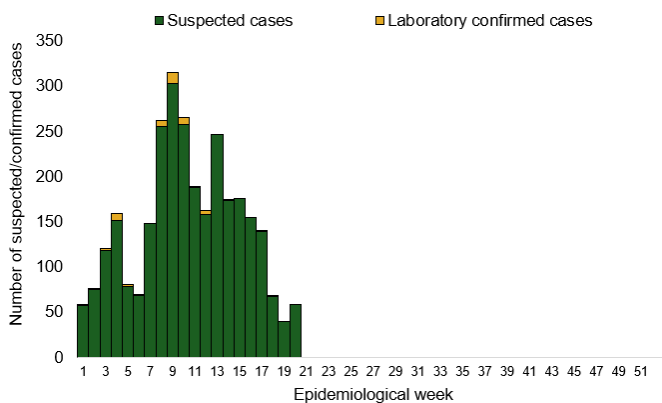
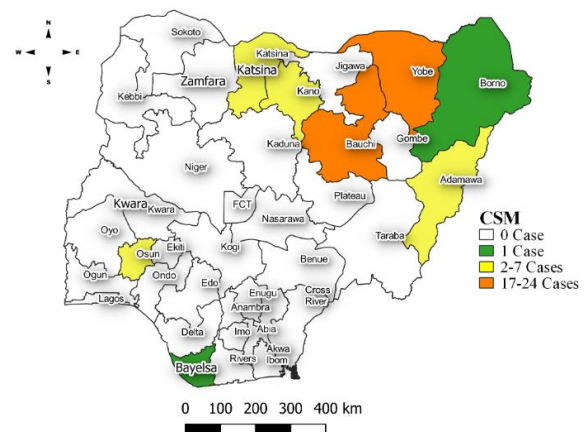


Figure 4: Location of suspected cases of CSM by State, Nigeria, week 20, 2024



Key points

- There were 59 suspected cases of Cerebrospinal meningitis (CSM) reported from 17 LGAs in eight states. There was no laboratory confirmed case and no death was reported.

Actions

To date:

- National CSM TWG meets weekly to review reports from states and plan appropriately.

Yellow Fever

Week 20

Suspected cases	Confirmed cases	Deaths	Number of States and LGAs affected
60	0	0	State: 22 LGA: 46

Year to date (week 1 – 20)

Suspected cases		Confirmed cases		Deaths		CFR	
2023	2024	2023	2024	2023	2024	2023	2024
1192	1209	15	5	5	1	0.4%	0.1%

Figure 5: Number of suspected and confirmed cases of Yellow Fever, Nigeria, weeks 1 – 20, 2024

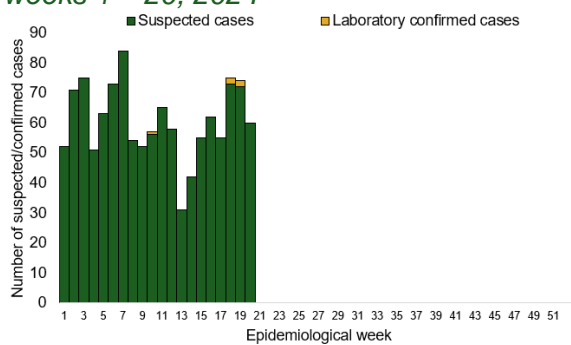
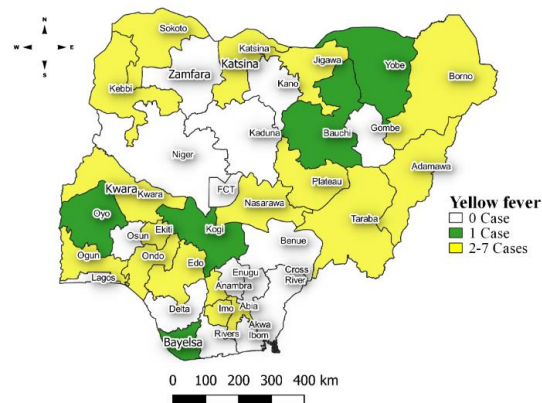


Figure 6: Location of suspected cases of Yellow Fever by States, Nigeria, week 20, 2024



Key points

- There were 60 suspected cases of Yellow Fever (YF) reported from 46 LGAs in 22 states. There was no laboratory confirmed case and no death was recorded.

Actions

To date:

- National YF multi-partner Technical Working Group (TWG) continues to coordinate activities across states.
- Harmonizing surveillance and laboratory data
- Following up with the state surveillance teams for early reporting of cases
- Coordination of yellow fever sample management and transportation from all states to the regional reference laboratories
- Regular testing of yellow fever samples in all the testing laboratories

Cholera

Week 20

Suspected cases	Confirmed cases	Deaths	Number of States and LGAs affected
26	0	0	State: 7 + FCT LGA: 11

Year to date (week 1 – 20)

Suspected cases		Confirmed cases		Deaths		CFR	
2023	2024	2023	2024	2023	2024	2023	2024
2277	1216	31	3	61	24	2.7%	1.9%

Figure 7: Number of suspected and confirmed cases of Cholera, Nigeria, weeks 1 – 20, 2024

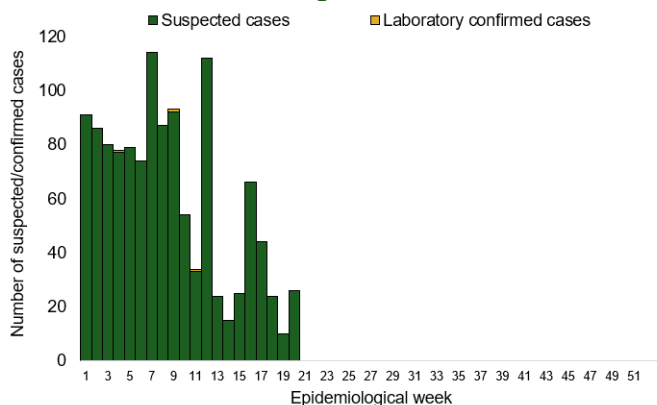
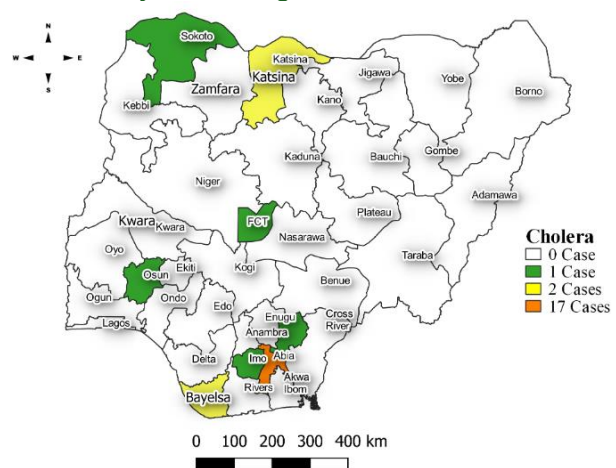


Figure 8: Location of suspected cases of Cholera by State, Nigeria, week 20, 2024



Key points

- There were 26 suspected cases of Cholera reported from 11 LGAs in seven states and FCT. There was no laboratory confirmed case and one death was recorded.

Actions

To date

- National Cholera Multi-Sectoral Technical Working Group (TWG) is monitoring all states and supporting affected states.

Measles

Week 20

Suspected cases	Confirmed cases	Deaths	Number of States and LGAs affected
336	16	0	State: 26 LGA: 136

Year to date (week 1 – 20)

Suspected cases		Confirmed cases		Deaths		CFR	
2023	2024	2023	2024	2023	2024	2023	2024
12806	12337	1181	1431	0	61	0%	0.5%

Figure 9: Number of suspected and confirmed cases of Measles, Nigeria, weeks 1 – 20, 2024.

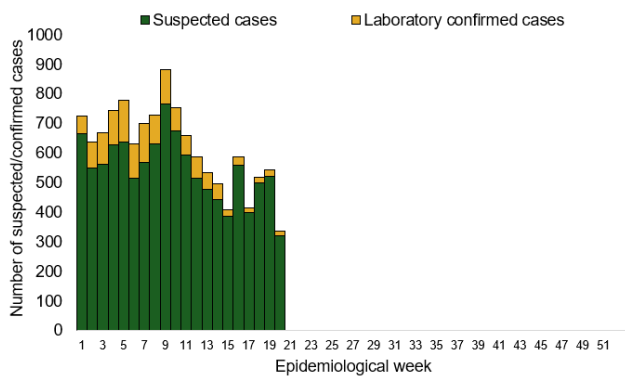
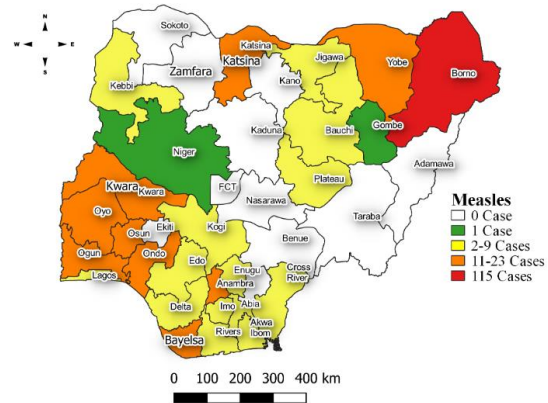


Figure 10: Location of suspected cases of Measles by State, Nigeria, week 20, 2024



Key points

- There were 336 suspected cases of Measles reported from 136 LGAs in 26 states. There were 16 laboratory confirmed cases and no death was recorded.

Actions

To date

- National Measles TWG is closely monitoring measles surveillance data and providing feedback to relevant agencies and development partners.

Mpox

Week 20

Suspected cases	Confirmed cases	Deaths	Number of States and LGAs affected
40	0	0	State: 17 LGA: 25

Year to date (week 1 – 20)

Suspected cases		Confirmed cases		Deaths		CFR	
2023	2024	2023	2024	2023	2024	2023	2024
695	516	79	24	2	0	0.3%	0%

Figure 11: Number of suspected and confirmed cases of Mpox, Nigeria, weeks 1 – 20, 2024.

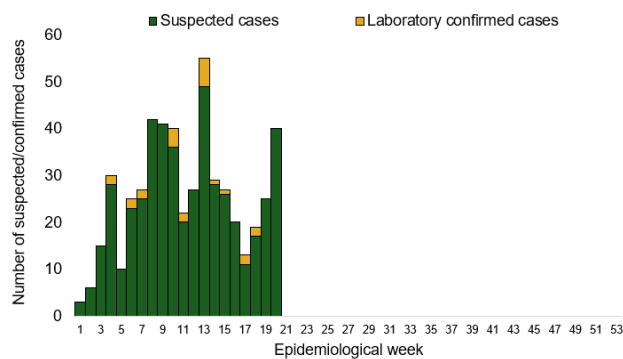
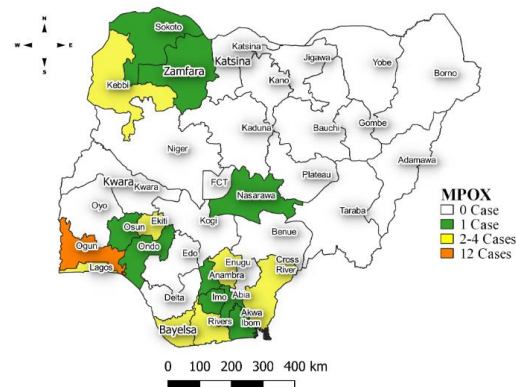


Figure 12: Location of suspected cases of Mpox by State, Nigeria, week 20, 2024



Key points

- There were 40 suspected cases of Mpox reported from 25 LGAs in 17 states. There was no laboratory confirmed case and no death was recorded.

Actions To date

- National Monkeypox Technical Working Group (TWG) is monitoring activities in all states.

Acute Flaccid Paralysis (AFP)

Week 20

Suspected cases	Confirmed cases	Deaths	Number of States and LGAs affected
113	0	0	State: 28 LGA: 86

Year to date (week 1 – 20)

Suspected cases		Confirmed cases		Deaths		CFR	
2023	2024	2023	2024	2023	2024	2023	2024
2906	3088	0	0	0	0	0%	0%

Figure 13: Number of suspected and confirmed cases of AFP, Nigeria, weeks 1 – 20, 2023

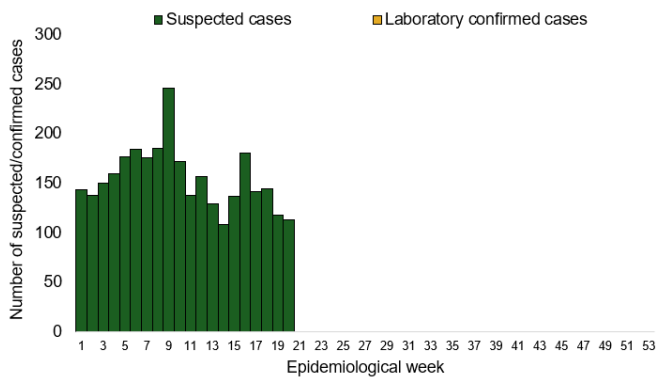
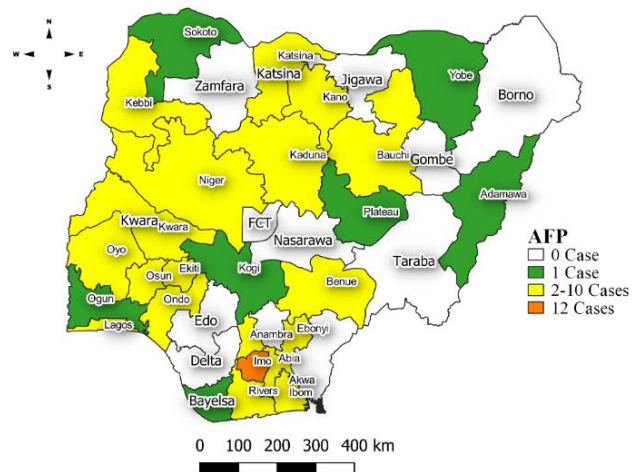


Figure 14: Location of suspected cases of AFP by State, Nigeria, week 20, 2024



Key points

- There were 113 suspected cases of AFP reported from 86 LGAs in 28 states. There was no laboratory confirmed case and no death was recorded.

National Influenza Sentinel Surveillance

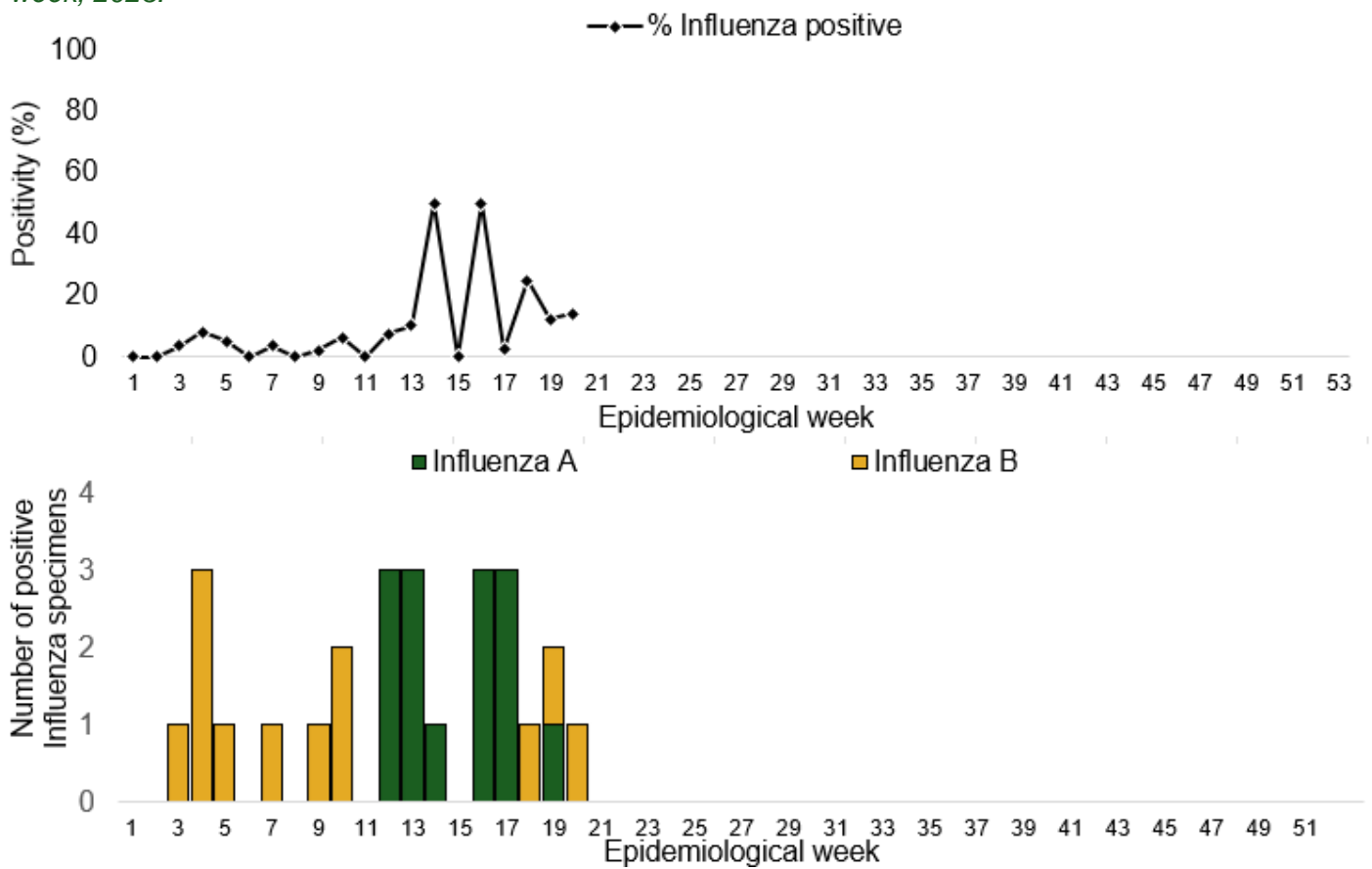
Week 20

Suspected Cases	Confirmed Cases	Confirmed Case by type	
		Influenza A	Influenza B
7	1	0	1

Year to date (week 1 – 20)

Suspected cases	Total Confirmed Cases	Confirmed cases by type	
398	36	Influenza A 14	Influenza B 12

Figure 15: Number of influenza positive specimens by type and percentage positive by epidemiological week, 2023.



Coronavirus Disease (COVID-19)

Week 20

Suspected cases	Confirmed cases	Deaths	Number of States and LGAs affected
3	3	0	State: 3 LGA: 3

Year to date (Week 1- 20)

Suspected cases		Confirmed cases		Deaths		CFR	
2023	2024	2023	2024	2023	2024	2023	2024
474	791	474	791	1	1	0.2%	0.1%

Figure 16: Epidemic curve of confirmed cases of COVID-19, Nigeria, week 1 - 20, 2024

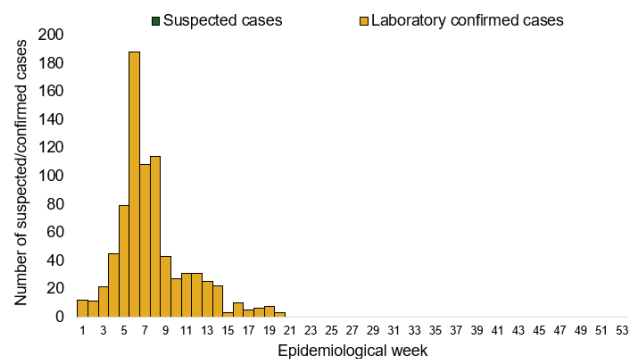
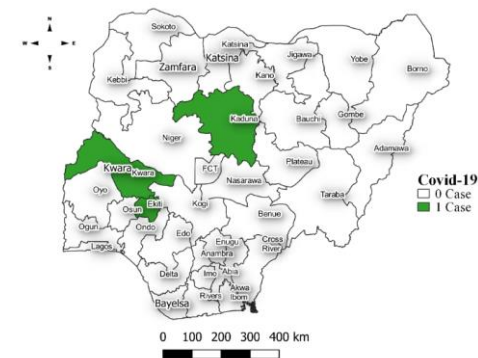


Figure 17: Location of confirmed cases of COVID-19 by State, Nigeria, as at week 20, 2024



Key points

- There were three suspected cases of Covid 19 reported from three LGAs in three states. There were three confirmed cases and no death was recorded

Actions

To date:

- Multi-sectoral Public Health Emergency Operation Centres (PHEOC) activated at the National and affected States

Diphtheria

Week 20

Suspected cases	Confirmed cases	Deaths	Number of States and LGAs affected
210	204	0	State: 3 LGA: 19

Year to date (week 1 – 20)

Suspected cases		Confirmed cases		Deaths		CFR	
2023	2024	2023	2024	2023	2024	2023	2024
2155	8713	1099	5758	115	99	5.3%	1.1%

Figure 18: Number of suspected and confirmed cases of Diphtheria, Nigeria, weeks 1 – 20, 2024

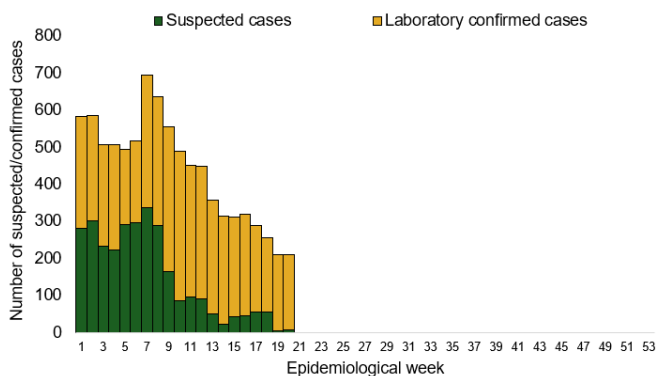
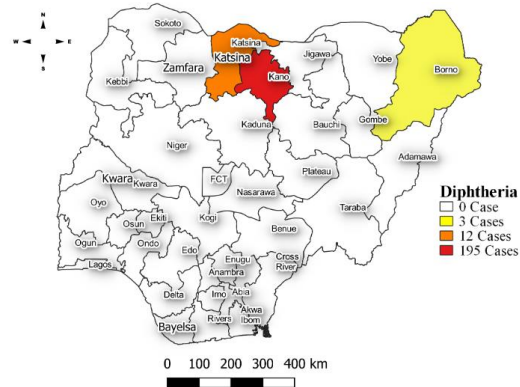


Figure 19: Location of suspected cases of Diphtheria by State, Nigeria, week 20, 2024



Key points

- There were 210 suspected cases of Diphtheria reported from 19 LGAs in three states. There were 204 confirmed cases and no death was recorded.

Actions

To date

- National Diphtheria Technical Working Group (TWG) is monitoring activities in all states.

Planned:

- Harmonisation of surveillance and laboratory data from across states and laboratories.
- Provision of off-site surveillance support to affected States.

Event Based Surveillance (EBS)

Week 20

Key points

For the reporting week 20

- 114 Calls were successfully routed to agents and answered
- 0 calls not routed to agents (Failed call)
- 114 total number of calls (successful and failed)
- 0 number of SMS received
- 0 WhatsApp/live chat messages received
- The percentage of failed to total inbound calls 0%
- 1 signal was picked and escalated to Adamawa state
 - Heat wave kills 200 in Adamawa from Daily Trust

For week 1 – 20

- 2,315 calls were successfully routed to agents and answered
- 113 calls not routed to agents (Failed call)
- 2,428 total inbound calls recorded
- The Percentage of failed to total inbound calls: 4.7%
- 32 Signals picked and escalated

Categories of Calls

- General inquiries 10
- Hoax call and others 60
- Report of health conditions 0
- Inquiry on Lassa fever 0
- Inquiry on malaria vaccine 0
- Health Declaration form-related queries 0
- Inquiries on Diphtheria symptoms, treatment, and Vaccine 1
- Inquiries on yellow fever vaccine 0
- Inquiries on Hepatitis 0
- Inquiries on Lassa fever vaccine 0
- Covid19 vaccination inquiries 0
- Inquiries on employment 0

Figure 20: Number of successful and failed calls, weeks 1 – 20, 2024

