



NIGERIA CENTRE FOR DISEASE CONTROL AND PREVENTION

Nigeria Centre for Disease Control and Prevention

*Protecting the health of Nigerians*

# Weekly Epidemiological Report

Week 19: 6<sup>th</sup> – 12<sup>th</sup> May 2024

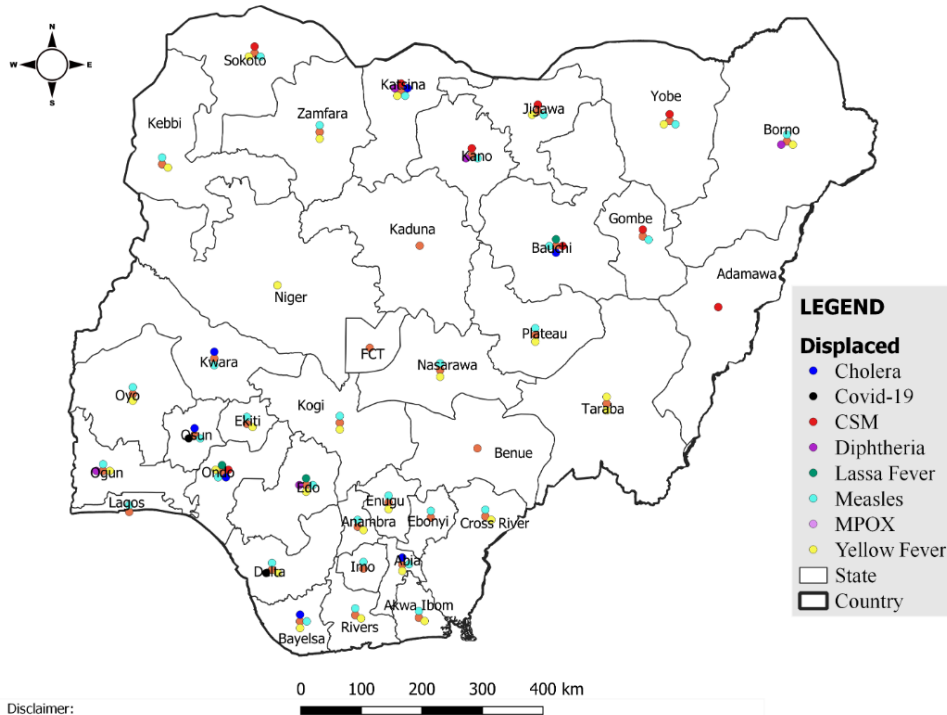
## Summary of Incidents

### Ongoing incidents

1

Ongoing incidents are defined as confirmed cases where a national EOC or equivalent has been activated (Diphtheria)

Other incidents are those with confirmed cases for which EOC is not activated



## Summary

Week 19: 6<sup>th</sup> – 12<sup>th</sup> May 2024

Lassa Fever <sup>1,2</sup>	Cerebrospinal Meningitis (CSM) <sup>1,4</sup>	Yellow Fever <sup>1,4</sup>
120 Suspected case(s)	40 Suspected case(s)	74 Suspected case(s)
4 Confirmed case(s)	0 Confirmed case(s)	2 Confirmed case(s)
3 Death(s)	0 Death(s)	0 Death(s)
Cholera <sup>1,4</sup>	Measles <sup>1,4</sup>	Mpox <sup>1,4</sup>
10 Suspected case(s)	545 Suspected case(s)	25 Suspected case(s)
0 Confirmed case(s)	24 Confirmed case(s)	0 Confirmed case(s)
0 Death(s)	2 Death(s)	0 Death(s)
Acute Flaccid Paralysis (AFP) <sup>1,4</sup>	National Sentinel influenza surveillance <sup>5</sup>	Coronavirus Disease <sup>1,</sup>
117 Suspected case(s)	16 Suspected case(s)	7 Suspected case(s)
0 Confirmed case(s)	2 Confirmed case(s)	7 Confirmed case(s)
0		0 Death(s)
Diphtheria <sup>1,4</sup>		
208 Suspected case(s)		
204 Confirmed case(s)		
1 Death(s)		

- Information for this disease was retrieved from the Technical Working Group and Situation Reports
- Case Fatality Rate (CFR) for this disease is reported for confirmed cases only.
- CFR for this disease is reported for total cases i.e. suspected + confirmed.
- Information for sentinel influenza was retrieved from the laboratory.

## Lassa Fever

### Week 19

Suspected cases	Confirmed cases	Deaths	Number of States and LGAs affected
120	14	3	State: 17 + FCT LGA: 27

### Year to date (week 1 – 19)

Suspected cases		Confirmed cases		Deaths		CFR	
2023	2024	2023	2024	2023	2024	2023	2024
5396	6226	936	883	158	160	16.9%	18.1%

Figure 1: Number of suspected and confirmed cases of Lassa Fever, Nigeria, Weeks 1 – 19, 2024

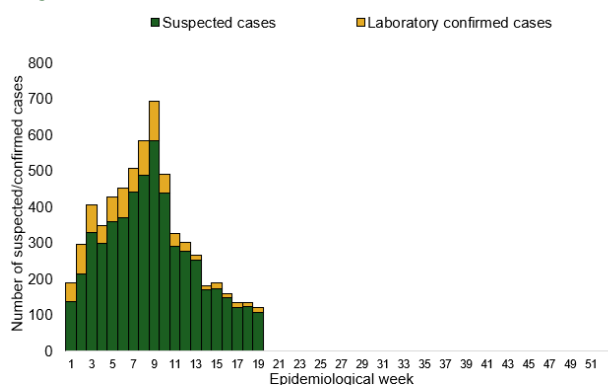
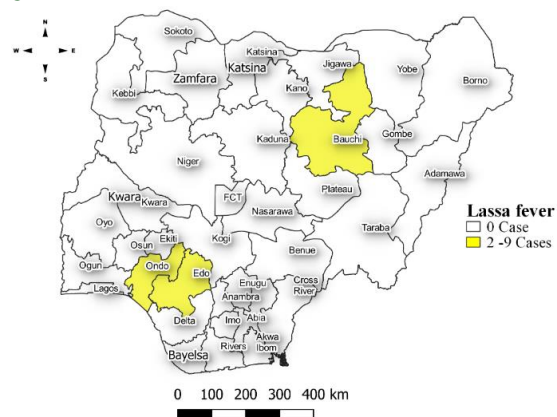


Figure 2: Location of **confirmed** cases of Lassa Fever by State, Nigeria, week 19, 2024



## Key points

- There were 120 suspected cases of Lassa Fever reported from 27 LGAs in 17 states and FCT. There were 14 laboratory confirmed cases and three deaths were recorded.

## Actions

### To date:

- National Lassa fever multi-partner, multi-sectoral Technical Working Group (TWG) continues to coordinate the response activities at all levels.
- Held an entry engagement meeting with the Nigerian Red Cross and IFRC on the implementation of the Disaster Response Emergency Fund (DREF) project

## Cerebrospinal Meningitis (CSM)

### Week 19

Suspected cases	Confirmed cases	Deaths	Number of States and LGAs affected
40	0	0	State: 9 LGA: 19

### Year to date (week 1 – 19)

Suspected cases		Confirmed cases		Deaths		CFR	
2023	2024	2023	2024	2023	2024	2023	2024
1873	2868	72	50	74	128	4%	4.5%

Figure 3: Number of suspected and confirmed cases of CSM, Nigeria, weeks 1 – 19, 2024

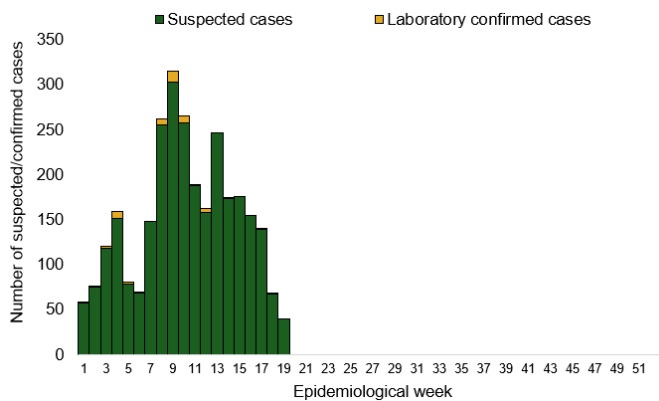
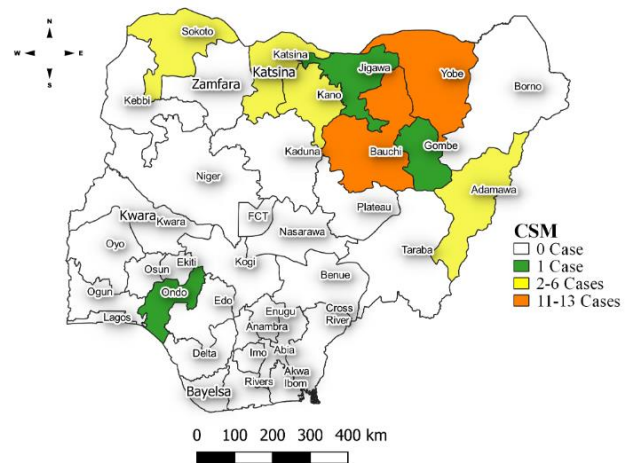


Figure 4: Location of suspected cases of CSM by State, Nigeria, week 19, 2024



### Key points

- There were 40 suspected cases of Cerebrospinal meningitis (CSM) reported from 19 LGAs in nine states. There was no laboratory confirmed case and no death was reported.

### Actions

#### To date:

- National CSM TWG meets weekly to review reports from states and plan appropriately.

## Yellow Fever

### Week 19

Suspected cases	Confirmed cases	Deaths	Number of States and LGAs affected
74	2	0	State: 24 LGA: 55

### Year to date (week 1 – 19)

Suspected cases		Confirmed cases		Deaths		CFR	
2023	2024	2023	2024	2023	2024	2023	2024
1124	1149	12	5	4	1	0.4%	0.1%

Figure 5: Number of suspected and confirmed cases of Yellow Fever, Nigeria, weeks 1 – 19, 2024

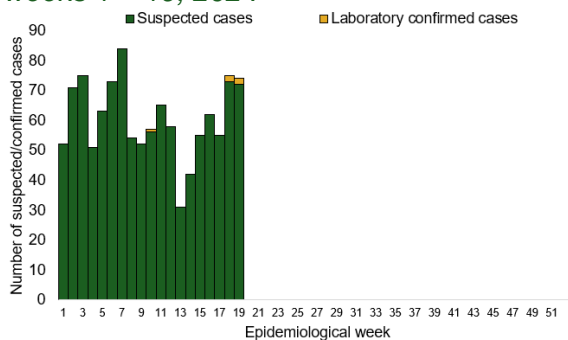
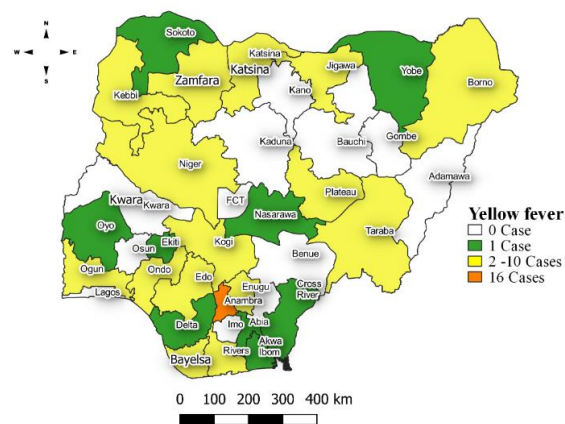


Figure 6: Location of suspected cases of Yellow Fever by States, Nigeria, week 19, 2024



### Key points

- There were 74 suspected cases of Yellow Fever (YF) reported from 55 LGAs in 24 states. There were two laboratory confirmed cases and no death was recorded.

### Actions

#### To date:

- National YF multi-partner Technical Working Group (TWG) continues to coordinate activities across states.
- Harmonizing surveillance and laboratory data
- Following up with the state surveillance teams for early reporting of cases
- Coordination of yellow fever sample management and transportation from all states to the regional reference laboratories
- Regular testing of yellow fever samples in all the testing laboratories

## Cholera

### Week 19

Suspected cases	Confirmed cases	Deaths	Number of States and LGAs affected
10	0	0	State: 7 LGA: 7

### Year to date (week 1 – 19)

Suspected cases		Confirmed cases		Deaths		CFR	
2023	2024	2023	2024	2023	2024	2023	2024
2220	1190	31	3	60	24	2.7%	2%

Figure 7: Number of suspected and confirmed cases of Cholera, Nigeria, weeks 1 – 19, 2024

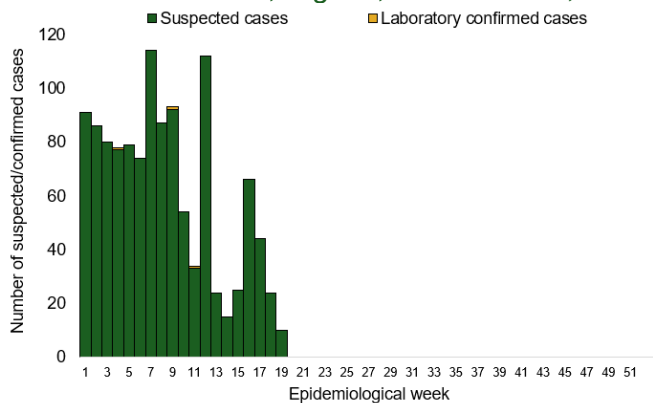
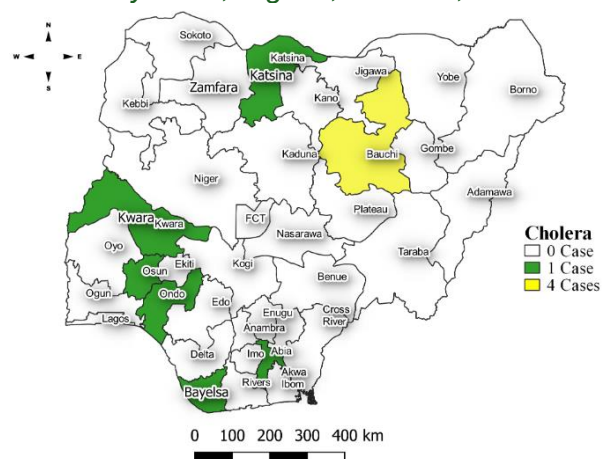


Figure 8: Location of suspected cases of Cholera by State, Nigeria, week 19, 2024



### Key points

- There were 10 suspected cases of Cholera reported from seven LGAs in seven states. There was no laboratory confirmed case and one death was recorded.

### Actions

#### To date

- National Cholera Multi-Sectoral Technical Working Group (TWG) is monitoring all states and supporting affected states.

## Measles

### Week 19

Suspected cases	Confirmed cases	Deaths	Number of States and LGAs affected
545	24	2	State: 32 LGA: 163

### Year to date (week 1 – 19)

Suspected cases		Confirmed cases		Deaths		CFR	
2023	2024	2023	2024	2023	2024	2023	2024
12148	12001	1130	1415	0	61	0%	0.5%

Figure 9: Number of suspected and confirmed cases of Measles, Nigeria, weeks 1 – 19, 2024.

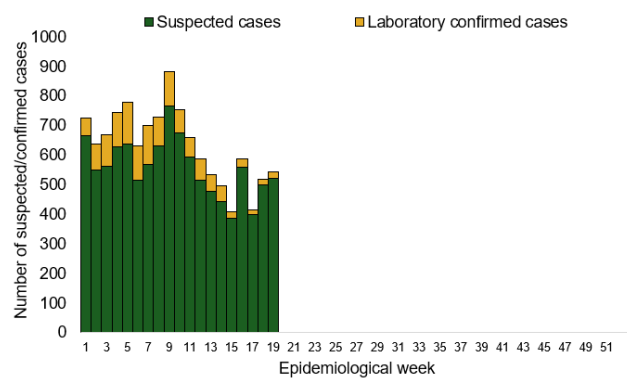
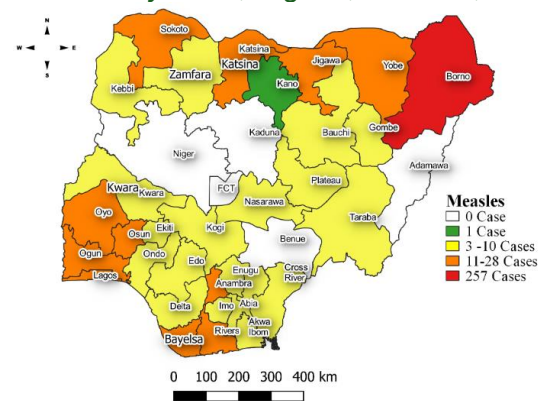


Figure 10: Location of suspected cases of Measles by State, Nigeria, week 19, 2024



### Key points

- There were 545 suspected cases of Measles reported from 163 LGAs in 32 states. There were 24 laboratory confirmed cases and two deaths were recorded.

### Actions

#### To date

- National Measles TWG is closely monitoring measles surveillance data and providing feedback to relevant agencies and development partners.

## Mpox

### Week 19

Suspected cases	Confirmed cases	Deaths	Number of States and LGAs affected
25	0	0	State: 13 LGA: 18

### Year to date (week 1 – 19)

Suspected cases		Confirmed cases		Deaths		CFR	
2023	2024	2023	2024	2023	2024	2023	2024
680	476	78	24	2	0	0.3%	0%

Figure 11: Number of suspected and confirmed cases of Mpox, Nigeria, weeks 1 – 19, 2024.

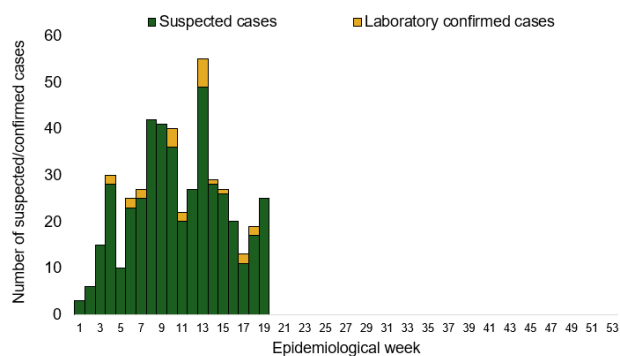
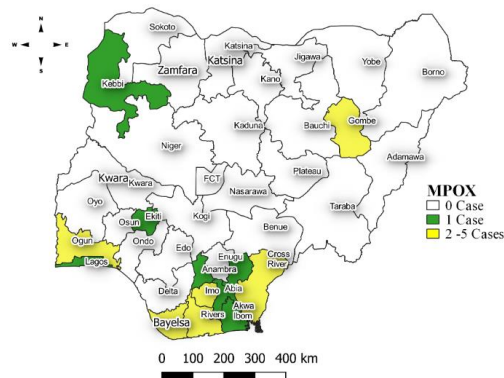


Figure 12: Location of suspected cases of Mpox by State, Nigeria, week 19, 2024



### Key points

- There were 25 suspected cases of Mpox reported from 18 LGAs in 13 states. There was no laboratory confirmed case and no death was recorded.

### Actions To date

- National Monkeypox Technical Working Group (TWG) is monitoring activities in all states.



## Acute Flaccid Paralysis (AFP)

### Week 19

Suspected cases	Confirmed cases	Deaths	Number of States and LGAs affected
117	0	0	State: 28 LGA: 93

### Year to date (week 1 – 19)

Suspected cases		Confirmed cases		Deaths		CFR	
2023	2024	2023	2024	2023	2024	2023	2024
2726	2975	0	0	0	0	0%	0%

Figure 13: Number of suspected and confirmed cases of AFP, Nigeria, weeks 1 – 19, 2023

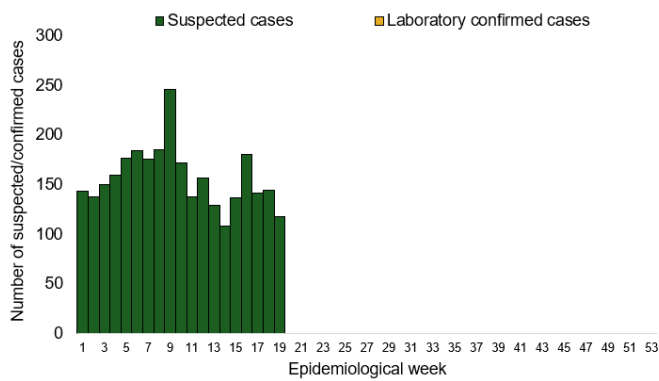
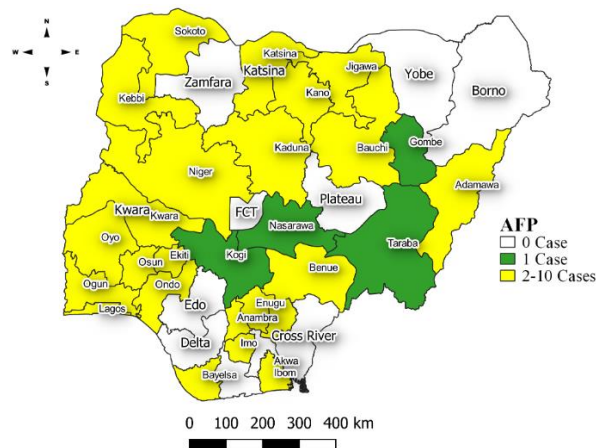


Figure 14: Location of suspected cases of AFP by State, Nigeria, week 19, 2024



### Key points

- There were 117 suspected cases of AFP reported from 93 LGAs in 28 states. There was no laboratory confirmed case and no death was recorded.

## National Influenza Sentinel Surveillance

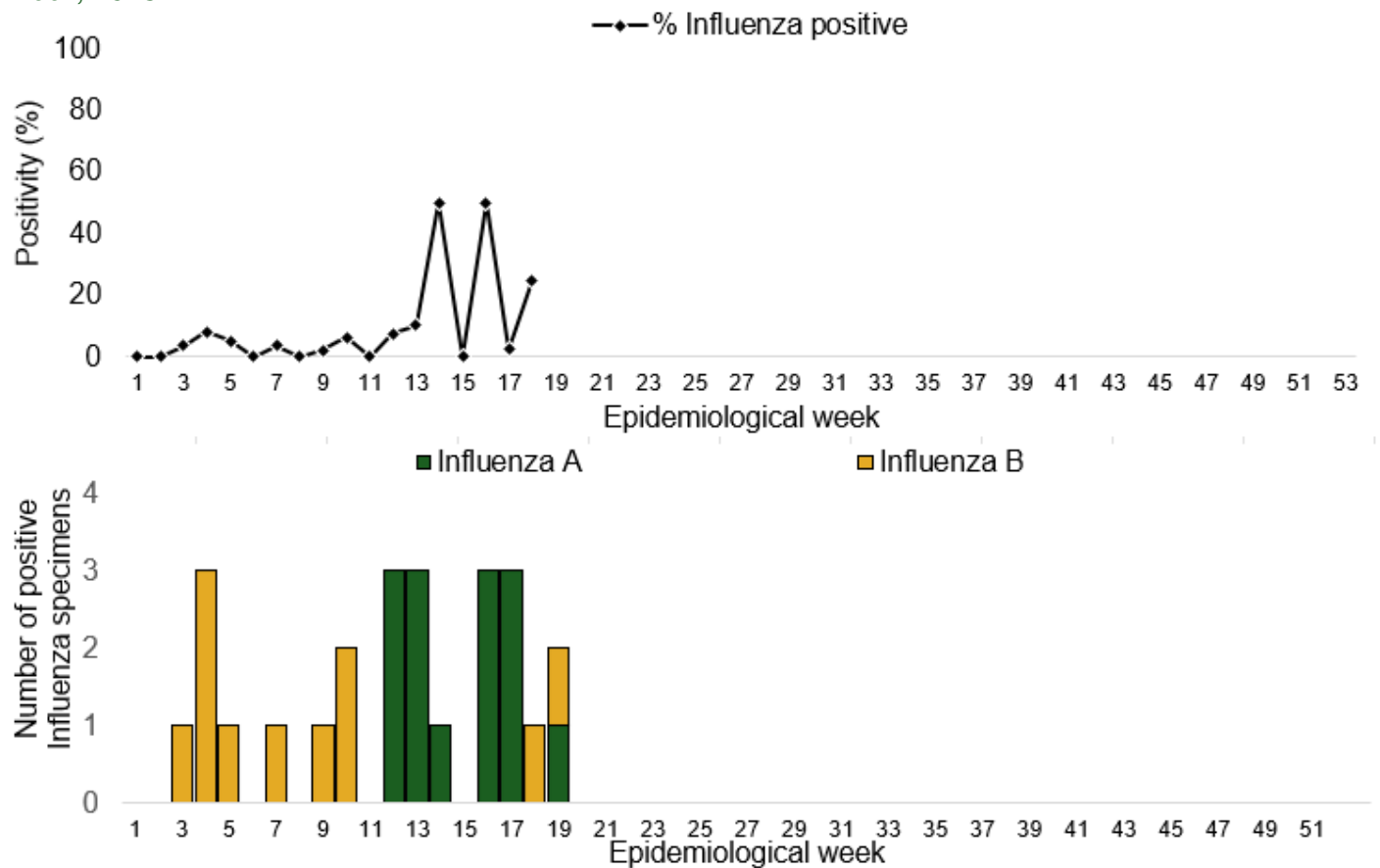
### Week 19

Suspected Cases	Confirmed Cases	Confirmed Case by type	
		Influenza A	Influenza B
16	2	1	1

### Year to date (week 1 – 19)

Suspected cases	Total Confirmed Cases	Confirmed cases by type	
391	25	Influenza A 14	Influenza B 11

Figure 15: Number of influenza positive specimens by type and percentage positive by epidemiological week, 2023.



## Coronavirus Disease (COVID-19)

### Week 19

Suspected cases	Confirmed cases	Deaths	Number of States and LGAs affected
7	7	0	State: 3 LGA: 3

### Year to date (Week 1- 19)

Suspected cases		Confirmed cases		Deaths		CFR	
2023	2024	2023	2024	2023	2024	2023	2024
469	788	469	788	1	1	0.2%	0.1%

Figure 16: Epidemic curve of confirmed cases of COVID-19, Nigeria, week 1 - 19, 2024

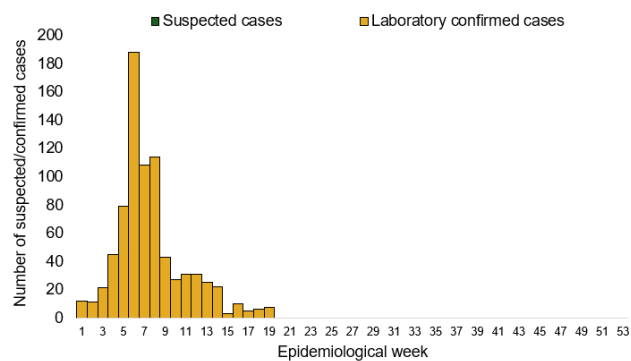
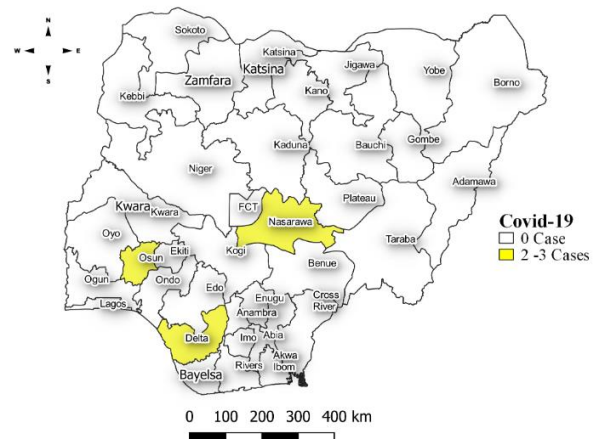


Figure 17: Location of confirmed cases of COVID-19 by State, Nigeria, as at week 19, 2024



### Key points

- There were seven suspected cases of Covid 19 reported from three LGAs in three states. There were seven confirmed cases and no death was recorded

### Actions

#### To date:

- Multi-sectoral Public Health Emergency Operation Centres (PHEOC) activated at the National and affected States

## Diphtheria

### Week 19

Suspected cases	Confirmed cases	Deaths	Number of States and LGAs affected
208	204	1	State: 5 LGA: 23

### Year to date (week 1 – 19)

Suspected cases		Confirmed cases		Deaths		CFR	
2023	2024	2023	2024	2023	2024	2023	2024
2137	8503	1089	5554	113	99	5.3%	1.2%

Figure 18: Number of suspected and confirmed cases of Diphtheria, Nigeria, weeks 1 – 19, 2024

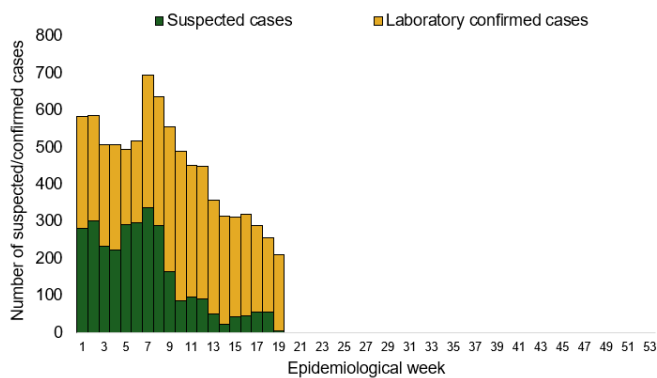
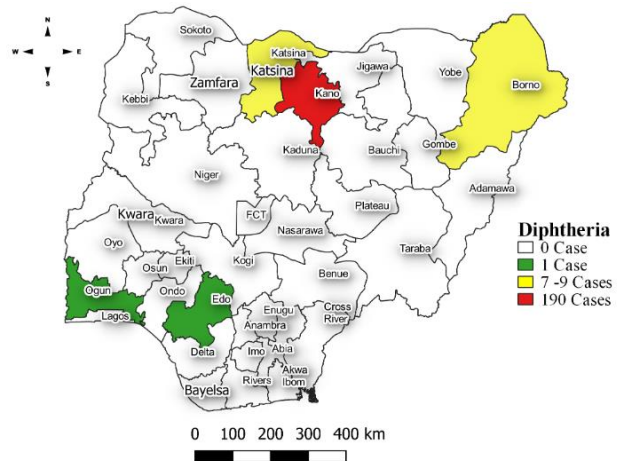


Figure 19: Location of suspected cases of Diphtheria by State, Nigeria, week 19, 2024



### Key points

- There were 208 suspected cases of Diphtheria reported from 23 LGAs in five states. There were 204 confirmed cases and one death was recorded.

### Actions To date

- National Diphtheria Technical Working Group (TWG) is monitoring activities in all states.

### Planned:

- Harmonisation of surveillance and laboratory data from across states and laboratories.
- Provision of off-site surveillance support to affected States.

## Event Based Surveillance (EBS)

### Week 19

#### Key points

##### For the reporting week 19

- 94 Calls were successfully routed to agents and answered
- 9 calls not routed to agents (Failed call)
- 103 total number of calls (successful and failed)
- 0 number of SMS received
- 0 WhatsApp/live chat messages received
- The percentage of failed to total inbound calls 8.7%
- 4 signals were picked and escalated to the States
  - Confirmed measles cases in Adamawa state from Vanguard Newspaper
  - Suspected case of diphtheria in Akwa Ibom State
  - Outbreak of strange disease in Zamfara state
  - Unusual increase in the number of people buried in a cemetery in Yola (No update on this so far)

##### For week 1 – 19

- 2,203 calls were successfully routed to agents and answered
- 113 calls not routed to agents (Failed call)
- 2,316 total inbound calls recorded
- The Percentage of failed to total inbound calls: 4.9%
- 31 Signals picked and escalated to the States

#### Categories of Calls

- General inquiries 10
- Hoax call and others 60
- Report of health conditions 0
- Inquiry on Lassa fever 0
- Inquiry on malaria vaccine 0
- Health Declaration form-related queries 0
- Inquiries on Diphtheria symptoms, treatment, and Vaccine 1
- Inquiries on yellow fever vaccine 0
- Inquiries on Hepatitis 0 • Inquiries on Lassa fever vaccine 0
- Covid19 vaccination inquiries 0
- Inquiries on employment 0

Figure 20: Number of successful and failed calls, weeks 1 – 19, 2024

