



NIGERIA CENTRE FOR DISEASE CONTROL AND PREVENTION

Nigeria Centre for Disease Control and Prevention

Protecting the health of Nigerians

Weekly Epidemiological Report

Week 17: 22nd – 28th April 2024

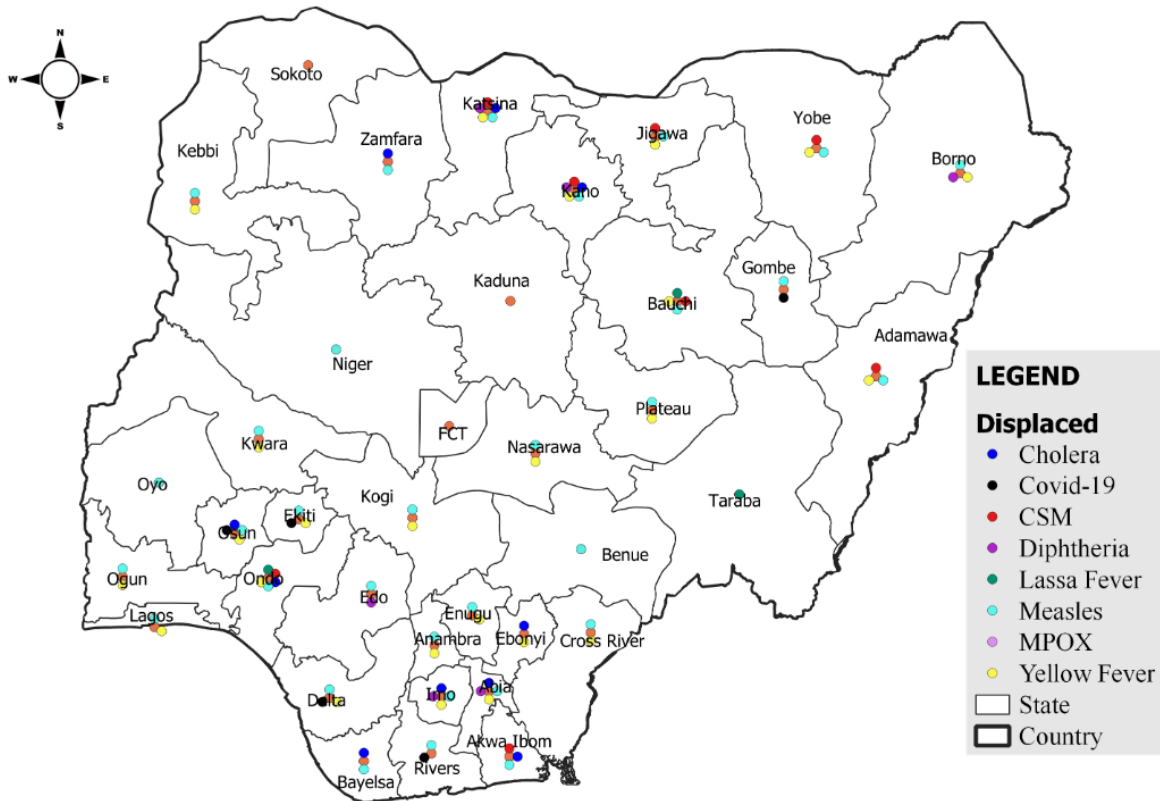
Summary of Incidents

Ongoing incidents

2

Ongoing incidents are defined as confirmed cases where a national EOC or equivalent has been activated (Lassa Fever and Diphtheria)

Other incidents are those with confirmed cases for which EOC is not activated



Disclaimer:

0 100 200 300 400 km

Summary

Week 17: 22nd – 28th April 2024

Lassa Fever ^{1,2}	Cerebrospinal Meningitis (CSM) ^{1,4}	Yellow Fever ^{1,4}
135 Suspected case(s)	140 Suspected case(s)	55 Suspected case(s)
14 Confirmed case(s)	1 Confirmed case(s)	0 Confirmed case(s)
1 Death(s)	1 Death(s)	0 Death(s)
Cholera ^{1,4}	Measles ^{1,4}	Mpox ^{1,4}
44 Suspected case(s)	414 Suspected case(s)	13 Suspected case(s)
0 Confirmed case(s)	16 Confirmed case(s)	2 Confirmed case(s)
0 Death(s)	0 Death(s)	0 Death(s)
Acute Flaccid Paralysis (AFP) ^{1,4}	National Sentinel influenza surveillance ⁵	Coronavirus Disease ^{1,}
141 Suspected case(s)	12 Suspected case(s)	5 Suspected case(s)
0 Confirmed case(s)	3 Confirmed case(s)	5 Confirmed case(s)
0		0 Death(s)
Diphtheria ^{1,4}		
289 Suspected case(s)		
234 Confirmed case(s)		
3 Death(s)		

- Information for this disease was retrieved from the Technical Working Group and Situation Reports
- Case Fatality Rate (CFR) for this disease is reported for confirmed cases only.
- CFR for this disease is reported for total cases i.e. suspected + confirmed.
- Information for sentinel influenza was retrieved from the laboratory.

Lassa Fever

Week 17

Suspected cases	Confirmed cases	Deaths	Number of States and LGAs affected
135	14	1	State: 15 + FCT LGA: 28

Year to date (week 1 – 17)

Suspected cases		Confirmed cases		Deaths		CFR	
2023	2024	2023	2024	2023	2024	2023	2024
5084	5963	918	857	156	156	17%	18.2%

Figure 1: Number of suspected and confirmed cases of Lassa Fever, Nigeria, Weeks 1 – 17, 2024

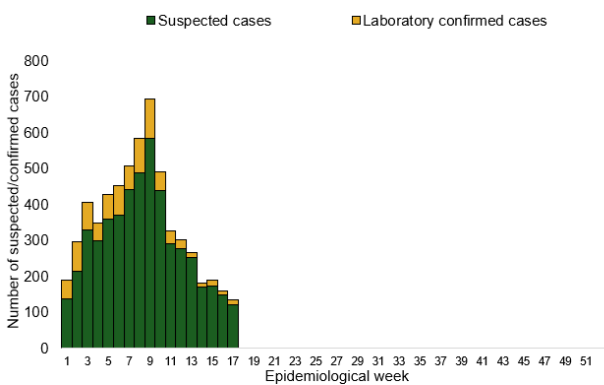
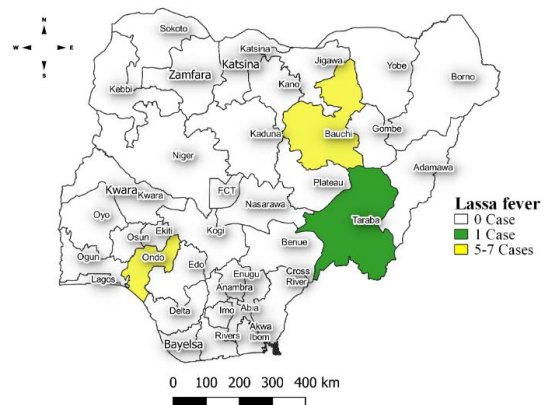


Figure 2: Location of **confirmed** cases of Lassa Fever by State, Nigeria, week 17, 2024



Key points

- There were 135 suspected cases of Lassa Fever reported from 28 LGAs in 15 states and FCT. There were 14 laboratory confirmed cases and one death was recorded.

Actions

To date:

- National Lassa fever multi-partner, multi-sectoral Technical Working Group (TWG) continues to coordinate the response activities at all levels.
- Review of the LF CM screening tool developed by MSF. Q1 data shared for analysis
- Plan for inter-laboratory comparison (EQA) for all the testing sites including the newly activated sites

Cerebrospinal Meningitis (CSM)

Week 17

Suspected cases	Confirmed cases	Deaths	Number of States and LGAs affected
140	1	1	State: 8 LGA: 33

Year to date (week 1 – 17)

Suspected cases		Confirmed cases		Deaths		CFR	
2023	2024	2023	2024	2023	2024	2023	2024
1784	2760	72	49	73	127	4.1%	4.6%

Figure 3: Number of suspected and confirmed cases of CSM, Nigeria, weeks 1 – 17, 2024

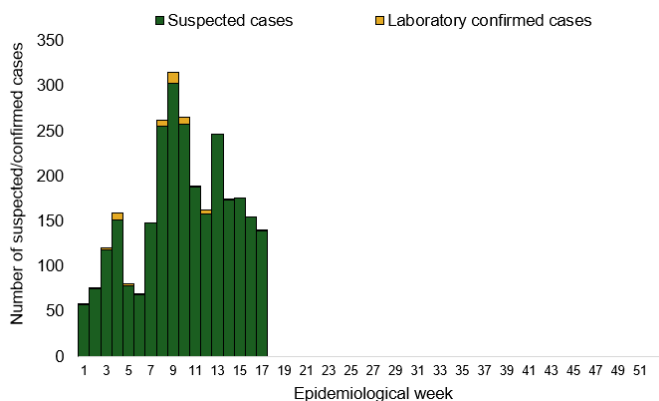
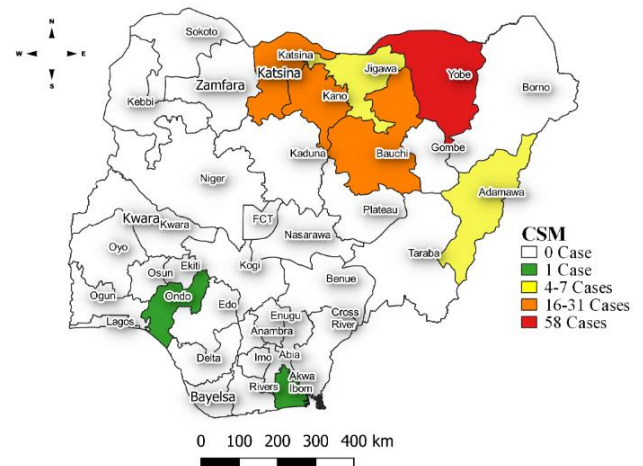


Figure 4: Location of suspected cases of CSM by State, Nigeria, week 17, 2024



Key points

- There were 140 suspected cases of Cerebrospinal meningitis (CSM) reported from 33 LGAs in eight states. There was one laboratory confirmed case and one death was reported.

Actions

To date:

- National CSM TWG meets weekly to review reports from states and plan appropriately.

Yellow Fever

Week 17

Suspected cases	Confirmed cases	Deaths	Number of States and LGAs affected
55	0	0	State: 24 LGA: 50

Year to date (week 1 – 17)

Suspected cases		Confirmed cases		Deaths		CFR	
2023	2024	2023	2024	2023	2024	2023	2024
958	10000	8	1	3	1	0.3%	0.01%

Figure 5: Number of suspected and confirmed cases of Yellow Fever, Nigeria, weeks 1 – 17, 2024

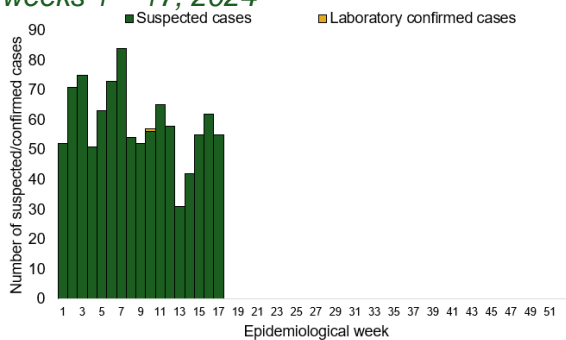
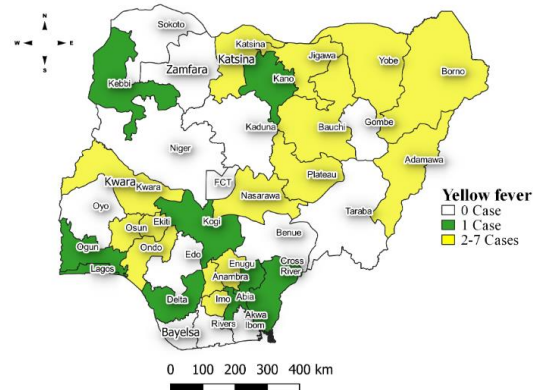


Figure 6: Location of suspected cases of Yellow Fever by States, Nigeria, week 17, 2024



Key points

- There were 55 suspected cases of Yellow Fever (YF) reported from 50 LGAs in 24 states. There was no laboratory confirmed case and no death was recorded.

Actions

To date:

- National YF multi-partner Technical Working Group (TWG) continues to coordinate activities across states.
- Harmonizing surveillance and laboratory data
- Following up with the state surveillance teams for early reporting of cases
- Coordination of yellow fever sample management and transportation from all states to the regional reference laboratories
- Regular testing of yellow fever samples in all the testing laboratories

Cholera

Week 17

Suspected cases	Confirmed cases	Deaths	Number of States and LGAs affected
44	0	0	State: 10 LGA: 15

Year to date (week 1 – 17)

Suspected cases		Confirmed cases		Deaths		CFR	
2023	2024	2023	2024	2023	2024	2023	2024
2121	1156	30	3	59	23	2.8%	2%

Figure 7: Number of suspected and confirmed cases of Cholera, Nigeria, weeks 1 – 17, 2024

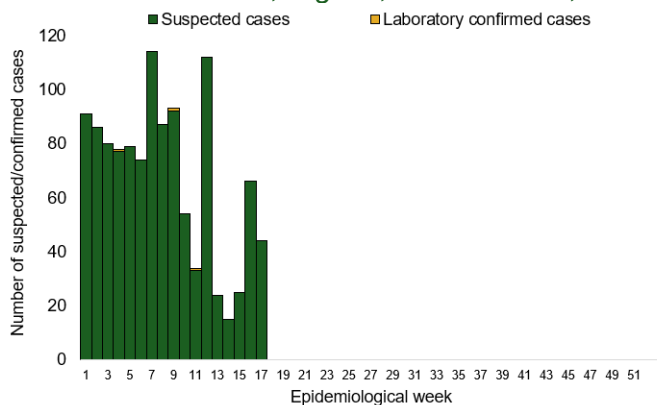
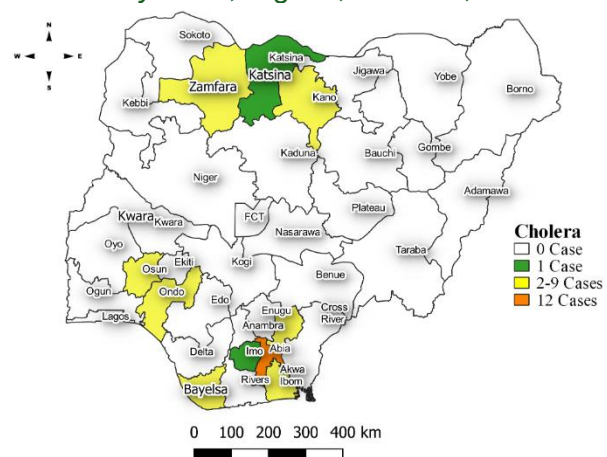


Figure 8: Location of suspected cases of Cholera by State, Nigeria, week 17, 2024



Key points

- There were 44 suspected cases of Cholera reported from 15 LGAs in 10 states. There was no laboratory confirmed case and no death was recorded.

Actions

To date

- National Cholera Multi-Sectoral Technical Working Group (TWG) is monitoring all states and supporting affected states.

Measles

Week 17

Suspected cases	Confirmed cases	Deaths	Number of States and LGAs affected
414	16	0	State: 32 LGA: 135

Year to date (week 1 – 17)

Suspected cases		Confirmed cases		Deaths		CFR	
2023	2024	2023	2024	2023	2024	2023	2024
11072	10937	1023	1370	0	59	0%	0.5%

Figure 9: Number of suspected and confirmed cases of Measles, Nigeria, weeks 1 – 17, 2024.

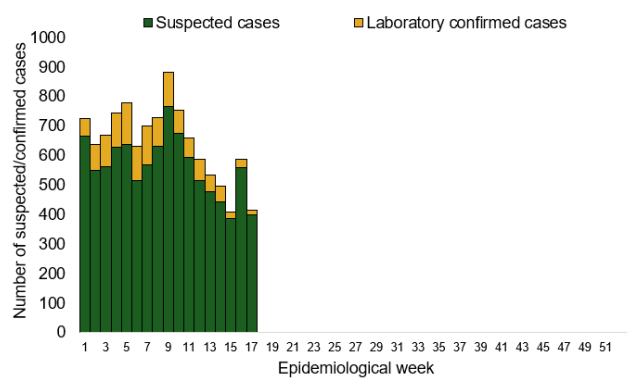
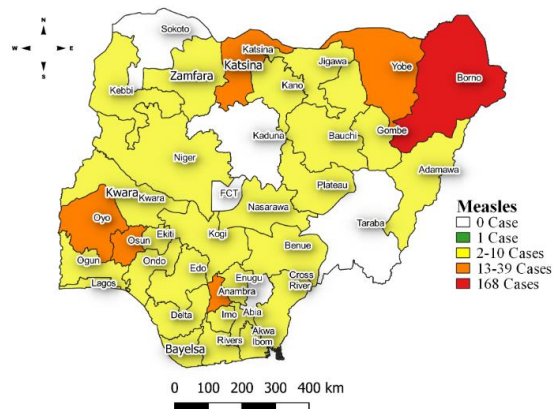


Figure 10: Location of suspected cases of Measles by State, Nigeria, week 17, 2024



Key points

- There were 414 suspected cases of Measles reported from 135 LGAs in 32 states. There were 16 laboratory confirmed cases and no death was recorded.

Actions

To date

- National Measles TWG is closely monitoring measles surveillance data and providing feedback to relevant agencies and development partners.

Mpox

Week 17

Suspected cases	Confirmed cases	Deaths	Number of States and LGAs affected
13	2	0	State: 7 + FCT LGA: 8

Year to date (week 1 – 17)

Suspected cases		Confirmed cases		Deaths		CFR	
2023	2024	2023	2024	2023	2024	2023	2024
629	432	72	22	2	0	0.3%	0%

Figure 11: Number of suspected and confirmed cases of Mpox, Nigeria, weeks 1 – 17, 2024.

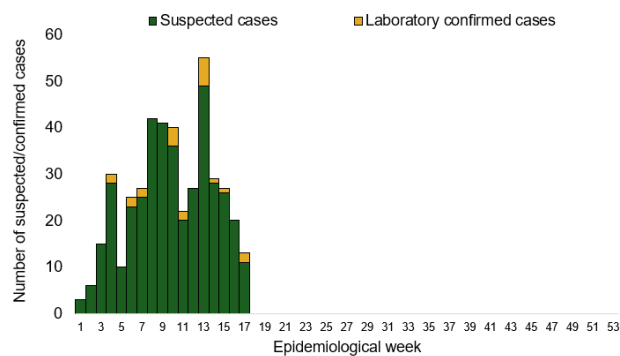
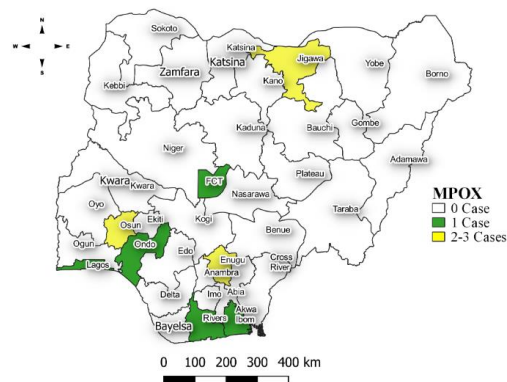


Figure 12: Location of suspected cases of Mpox by State, Nigeria, week 17, 2024



Key points

- There were 13 suspected cases of Mpox reported from eight LGAs in seven states and FCT. There were two laboratory confirmed cases and no death was recorded.

Actions

To date

- National Monkeypox Technical Working Group (TWG) is monitoring activities in all states.

Acute Flaccid Paralysis (AFP)

Week 17

Suspected cases	Confirmed cases	Deaths	Number of States and LGAs affected
141	0	0	State: 29 + FCT LGA: 113

Year to date (week 1 – 17)

Suspected cases		Confirmed cases		Deaths		CFR	
2023	2024	2023	2024	2023	2024	2023	2024
2413	2714	0	0	0	0	0%	0%

Figure 13: Number of suspected and confirmed cases of AFP, Nigeria, weeks 1 – 17, 2023

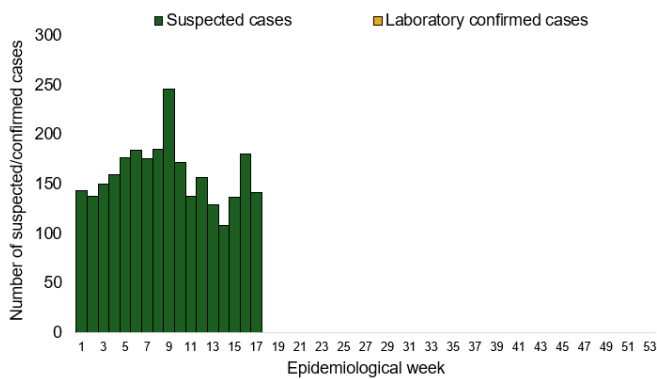
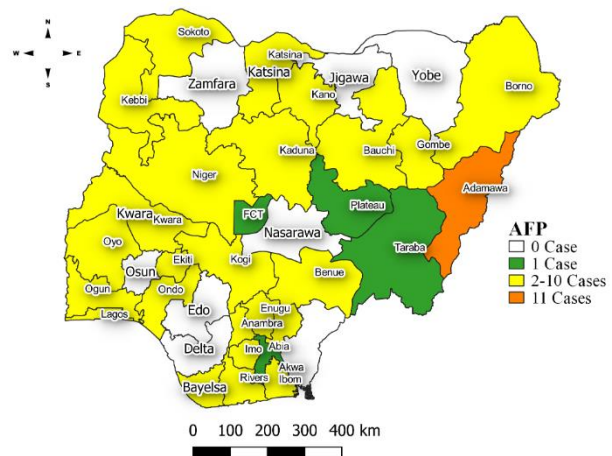


Figure 14: Location of suspected cases of AFP by State, Nigeria, week 17, 2024



Key points

- There were 141 suspected cases of AFP reported from 113 LGAs in 29 states and FCT. There was no laboratory confirmed case and no death was recorded.

National Influenza Sentinel Surveillance

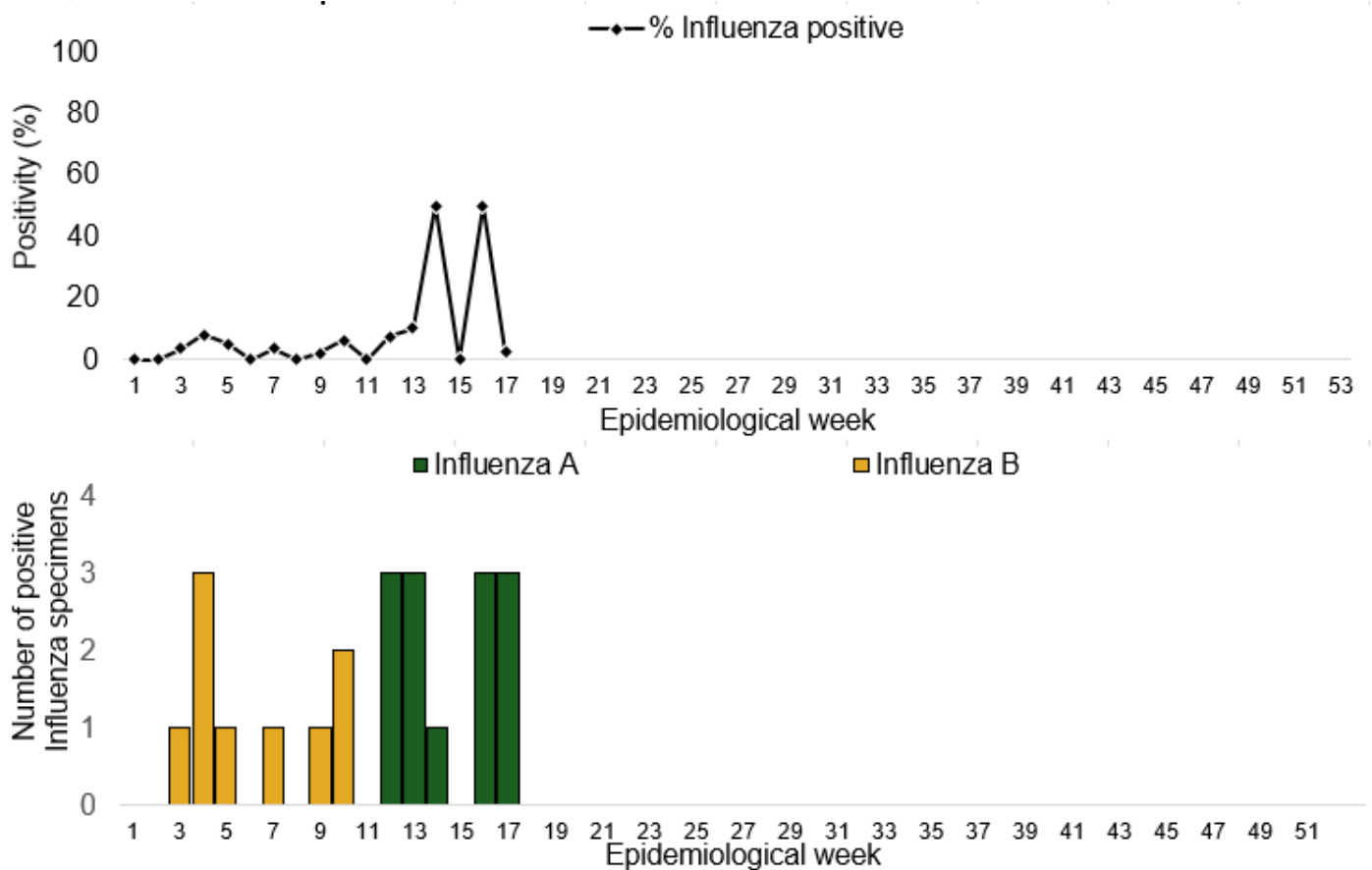
Week 17

Suspected Cases	Confirmed Cases	Confirmed Case by type	
		Influenza A	Influenza B
12	3	3	0

Year to date (week 1 – 17)

Suspected cases	Total Confirmed Cases	Confirmed cases by type	
		Influenza A	Influenza B
371	22	13	9

Figure 15: Number of influenza positive specimens by type and percentage positive by epidemiological week, 2023.



Coronavirus Disease (COVID-19)

Week 17

Suspected cases	Confirmed cases	Deaths	Number of States and LGAs affected
5	5	0	State: 5 LGA: 5

Year to date (Week 1- 17)

Suspected cases		Confirmed cases		Deaths		CFR	
2023	2024	2023	2024	2023	2024	2023	2024
434	775	434	775	1	1	0.2%	0.1%

Figure 16: Epidemic curve of confirmed cases of COVID-19, Nigeria, week 1 - 17, 2024

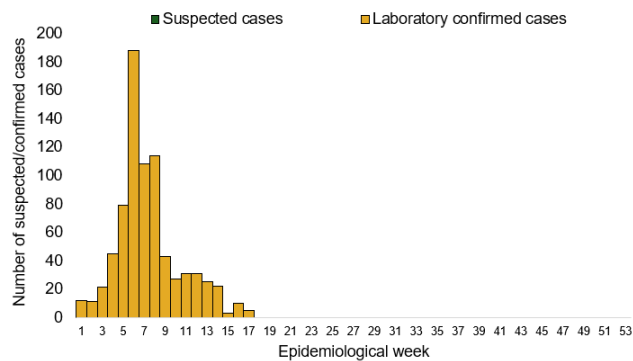
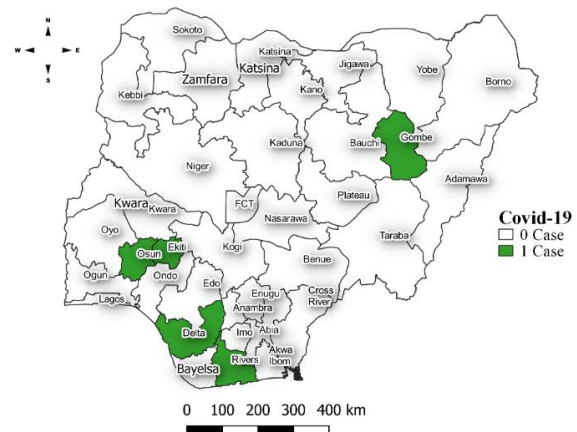


Figure 17: Location of confirmed cases of COVID-19 by State, Nigeria, as at week 17, 2024



Key points

- There were five suspected cases of Covid 19 reported from five LGAs in five states. There were five confirmed cases and no death was recorded

Actions

To date:

- Multi-sectoral Public Health Emergency Operation Centres (PHEOC) activated at the National and affected States

Diphtheria

Week 17

Suspected cases	Confirmed cases	Deaths	Number of States and LGAs affected
289	234	3	State: 6 LGA: 26

Year to date (week 1 – 17)

Suspected cases		Confirmed cases		Deaths		CFR	
2023	2024	2023	2024	2023	2024	2023	2024
1929	8041	1011	5150	112	96	5.8%	1.2%

Figure 18: Number of suspected and confirmed cases of Diphtheria, Nigeria, weeks 1 – 17, 2024

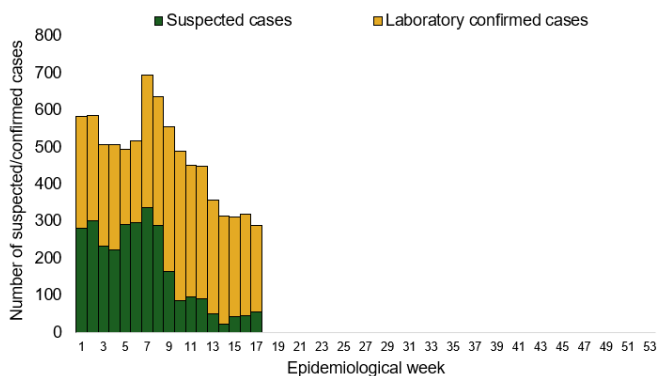
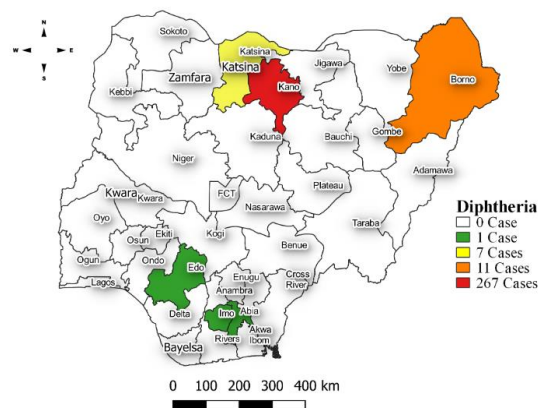


Figure 19: Location of suspected cases of Diphtheria by State, Nigeria, week 17, 2024



Key points

- There were 289 suspected cases of Diphtheria reported from 26 LGAs in six states. There were 234 confirmed cases and three deaths were recorded.

Actions

To date

- National Diphtheria Technical Working Group (TWG) is monitoring activities in all states.

Planned:

- Harmonisation of surveillance and laboratory data from across states and laboratories.
- Provision of off-site surveillance support to affected States.

Event Based Surveillance (EBS)

Week 17

Key points

For the reporting week 17

- 138 Calls were successfully routed to agents and answered
- 4 calls not routed to agents (Failed call)
- 142 total number of calls (successful and failed)
- 0 number of SMS received
- 0 WhatsApp/live chat messages received
- The percentage of failed to total inbound calls 2.8%
- 1 signal picked and escalated to Kogi State on Lassa fever
 - Sample was taken and sent to Lab result for Lassa fever was negative

For week 1 – 17

- 1,673 calls were successfully routed to agents and answered
- 85 calls not routed to agents (Failed call)
- 1,758 total inbound calls recorded
- The Percentage of failed to total inbound calls: 4.8%
- 23 Signals picked and escalated

Categories of Calls

- General inquiries 69
- Hoax call and others 25
- Report of health conditions 4
- Inquiry on Lassa fever 17
- Inquiry on malaria vaccine 0
- Health Declaration form-related queries 0
- Inquiries on Diphtheria symptoms, treatment, and Vaccine 13
- Inquiries on yellow fever vaccine 8
- Inquiries on Hepatitis 4
- Inquiries on Lassa fever vaccine 0
- Covid19 vaccination inquiries 2

Figure 20: Number of successful and failed calls, weeks 1 – 17, 2024

