



NIGERIA CENTRE FOR DISEASE CONTROL AND PREVENTION

Nigeria Centre for Disease Control and Prevention

Protecting the health of Nigerians

Weekly Epidemiological Report

Week 16: 15th – 21st April 2024

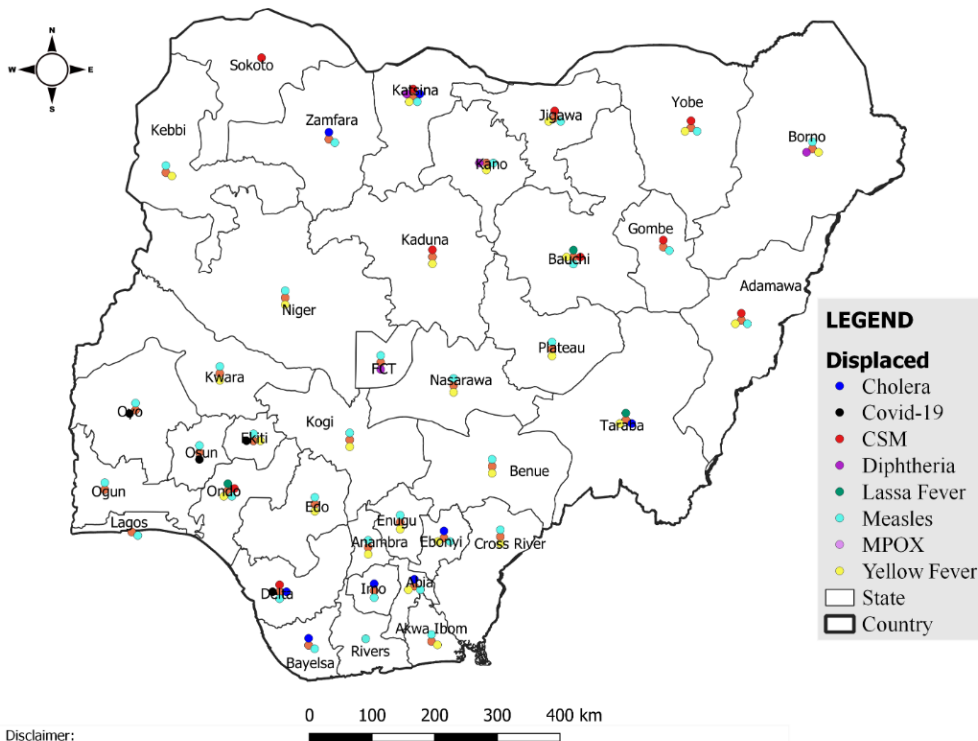
Summary of Incidents

Ongoing incidents

2

Ongoing incidents are defined as confirmed cases where a national EOC or equivalent has been activated (Lassa Fever and Diphtheria)

Other incidents are those with confirmed cases for which EOC is not activated



Summary

Week 16: 15th – 21st April 2024

Lassa Fever ^{1,2}	Cerebrospinal Meningitis (CSM) ^{1,4}	Yellow Fever ^{1,4}
159 Suspected case(s)	155 Suspected case(s)	62 Suspected case(s)
11 Confirmed case(s)	0 Confirmed case(s)	0 Confirmed case(s)
3 Death(s)	2 Death(s)	0 Death(s)
Cholera ^{1,4}	Measles ^{1,4}	Mpox ^{1,4}
66 Suspected case(s)	586 Suspected case(s)	20 Suspected case(s)
0 Confirmed case(s)	28 Confirmed case(s)	0 Confirmed case(s)
2 Death(s)	2 Death(s)	0 Death(s)
Acute Flaccid Paralysis (AFP) ^{1,4}	National Sentinel influenza surveillance ⁵	Coronavirus Disease ^{1,}
180 Suspected case(s)	6 Suspected case(s)	10 Suspected case(s)
0 Confirmed case(s)	3 Confirmed case(s)	10 Confirmed case(s)
0		0 Death(s)
Diphtheria ^{1,4}		
317 Suspected case(s)		
273 Confirmed case(s)		
3 Death(s)		

1. Information for this disease was retrieved from the Technical Working Group and Situation Reports
2. Case Fatality Rate (CFR) for this disease is reported for confirmed cases only.
3. CFR for this disease is reported for total cases i.e. suspected + confirmed.
4. Information for sentinel influenza was retrieved from the laboratory.

Lassa Fever

Week 16

Suspected cases	Confirmed cases	Deaths	Number of States and LGAs affected
159	11	3	State: 18 LGA: 19

Year to date (week 1 – 16)

Suspected cases		Confirmed cases		Deaths		CFR	
2023	2024	2023	2024	2023	2024	2023	2024
4908	5828	897	843	154	155	17%	18.4%

Figure 1: Number of suspected and confirmed cases of Lassa Fever, Nigeria, Weeks 1 – 16, 2024

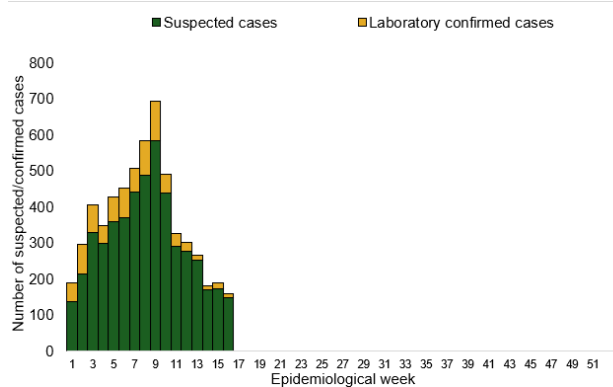
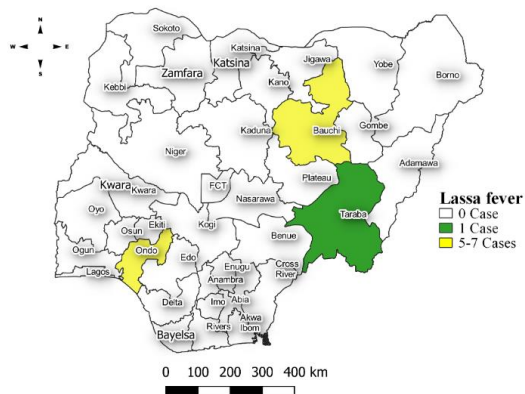


Figure 2: Location of **confirmed** cases of Lassa Fever by State, Nigeria, week 16, 2024



Key points

- There were 159 suspected cases of Lassa Fever reported from 19 LGAs in 18 states. There were 11 laboratory confirmed cases and three deaths were recorded.

Actions

To date:

- National Lassa fever multi-partner, multi-sectoral Technical Working Group (TWG) continues to coordinate the response activities at all levels.
- Participated in the Batch A Lassa fever virtual orientation for volunteers on the Nigerian Red Cross Society (NRCS) Disaster Response Emergency Fund (DREF) implementation
- Conduct a dynamic risk assessment in preparation for EOC de-escalation

Cerebrospinal Meningitis (CSM)

Week 16

Suspected cases	Confirmed cases	Deaths	Number of States and LGAs affected
155	0	2	State: 12 LGA: 38

Year to date (week 1 – 16)

Suspected cases		Confirmed cases		Deaths		CFR	
2023	2024	2023	2024	2023	2024	2023	2024
1602	2620	72	48	71	128	4.4%	4.9%

Figure 3: Number of suspected and confirmed cases of CSM, Nigeria, weeks 1 – 16, 2024

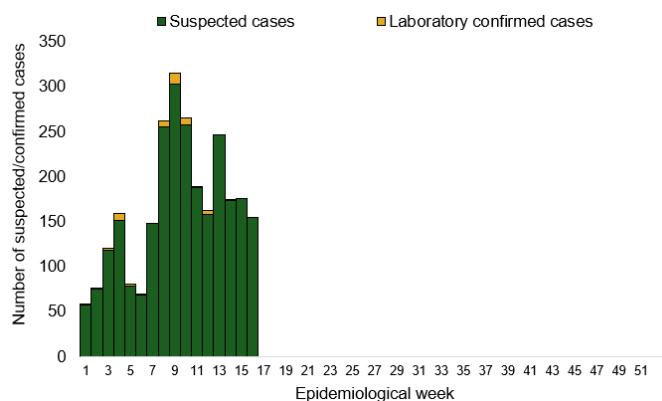
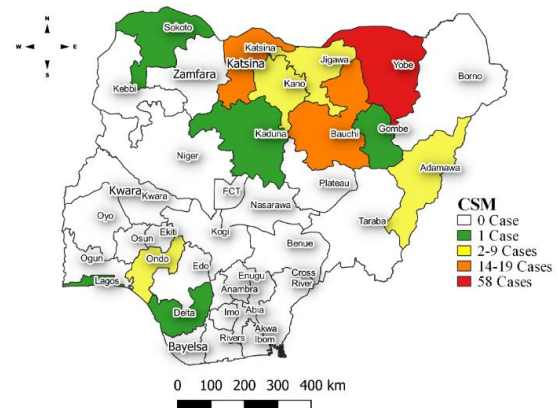


Figure 4: Location of suspected cases of CSM by State, Nigeria, week 16, 2024



Key points

- There were 155 suspected cases of Cerebrospinal meningitis (CSM) reported from 38 LGAs in 12 states. There was no laboratory confirmed case and two deaths were reported.

Actions

To date:

- National CSM TWG meets weekly to review reports from states and plan appropriately.

Yellow Fever

Week 16

Suspected cases	Confirmed cases	Deaths	Number of States and LGAs affected
62	0	0	State: 25 LGA: 55

Year to date (week 1 – 16)

Suspected cases		Confirmed cases		Deaths		CFR	
2023	2024	2023	2024	2023	2024	2023	2024
889	945	6	1	3	1	0.3%	0.1%

Figure 5: Number of suspected and confirmed cases of Yellow Fever, Nigeria, weeks 1 – 16, 2024

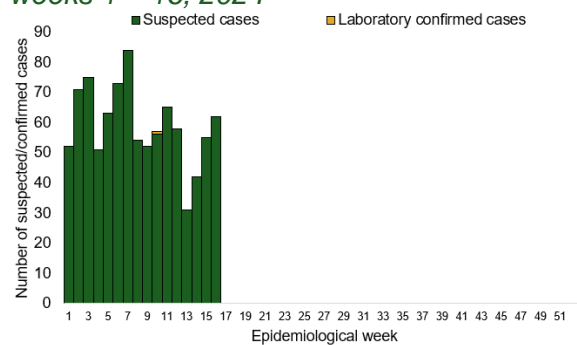
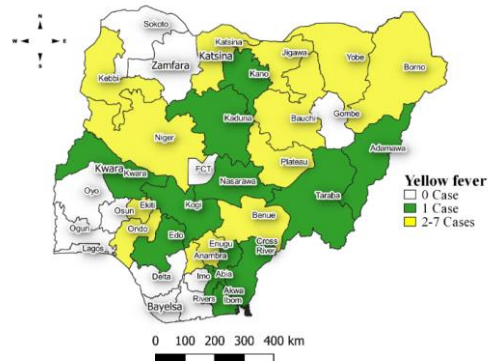


Figure 6: Location of suspected cases of Yellow Fever by States, Nigeria, week 16, 2024



Key points

- There were 62 suspected cases of Yellow Fever (YF) reported from 55 LGAs in 25 states. There was no laboratory confirmed case and no death was recorded.

Actions

To date:

- National YF multi-partner Technical Working Group (TWG) continues to coordinate activities across states.
- Harmonizing surveillance and laboratory data
- Following up with the state surveillance teams for early reporting of cases
- Coordination of yellow fever sample management and transportation from all states to the regional reference laboratories
- Regular testing of yellow fever samples in all the testing laboratories

Cholera

Week 16

Suspected cases	Confirmed cases	Deaths	Number of States and LGAs affected
66	0	2	State: 8 LGA: 14

Year to date (week 1 – 16)

Suspected cases		Confirmed cases		Deaths		CFR	
2023	2024	2023	2024	2023	2024	2023	2024
2074	1112	29	3	57	23	2.7%	2.1%

Figure 7: Number of suspected and confirmed cases of Cholera, Nigeria, weeks 1 – 16, 2024

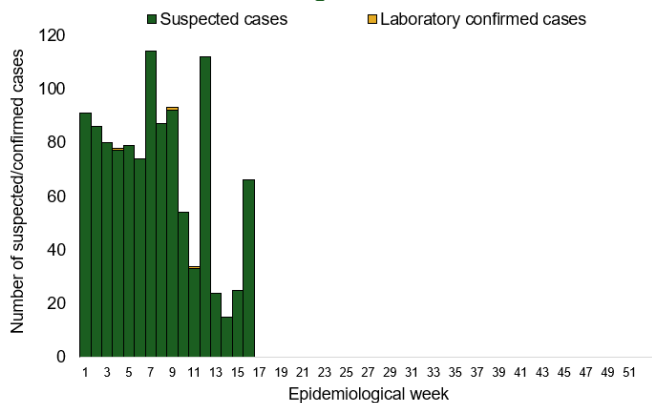
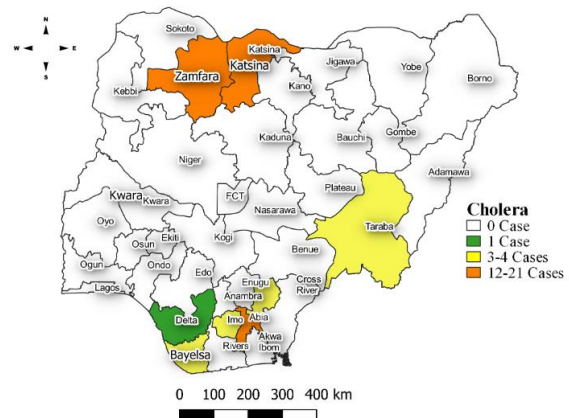


Figure 8: Location of suspected cases of Cholera by State, Nigeria, week 16, 2024



Key points

- There were 66 suspected cases of Cholera reported from 14 LGAs in eight states. There was no laboratory confirmed case and two deaths were recorded.

Actions To date

- National Cholera Multi-Sectoral Technical Working Group (TWG) is monitoring all states and supporting affected states.

Measles

Week 16

Suspected cases	Confirmed cases	Deaths	Number of States and LGAs affected
586	28	2	State: 33 + FCT LGA: 184

Year to date (week 1 – 16)

Suspected cases		Confirmed cases		Deaths		CFR	
2023	2024	2023	2024	2023	2024	2023	2024
10603	10523	971	1354	0	59	0%	0.6%

Figure 9: Number of suspected and confirmed cases of Measles, Nigeria, weeks 1 – 16, 2024.

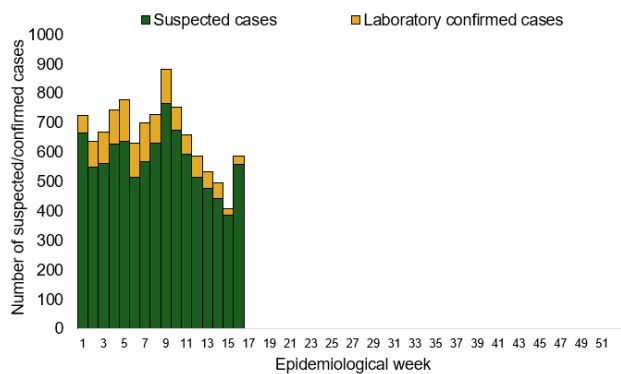
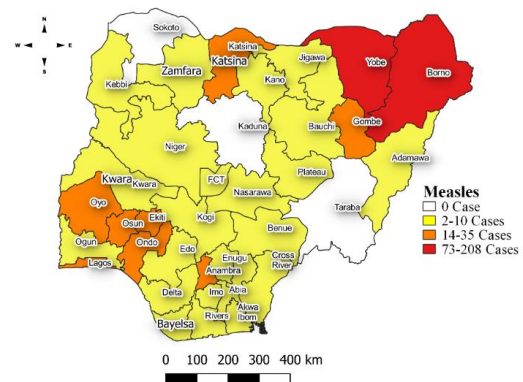


Figure 10: Location of suspected cases of Measles by State, Nigeria, week 16, 2024



Key points

- There were 586 suspected cases of Measles reported from 184 LGAs in 33 states and FCT. There were 28 laboratory confirmed cases and two deaths were recorded.

Actions

To date

- National Measles TWG is closely monitoring measles surveillance data and providing feedback to relevant agencies and development partners.

Mpox

Week 16

Suspected cases	Confirmed cases	Deaths	Number of States and LGAs affected
20	0	0	State: 11 LGA: 14

Year to date (week 1 – 16)

Suspected cases		Confirmed cases		Deaths		CFR	
2023	2024	2023	2024	2023	2024	2023	2024
602	419	72	20	2	0	0.3%	0%

Figure 11: Number of suspected and confirmed cases of Mpox, Nigeria, weeks 1 – 16, 2024.

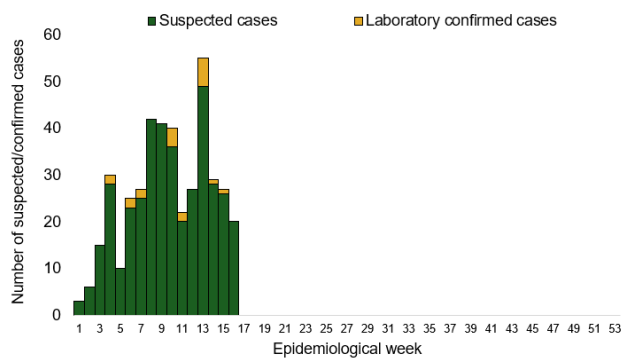
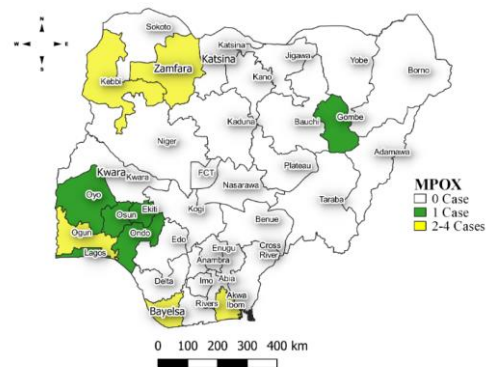


Figure 12: Location of suspected cases of Mpox by State, Nigeria, week 16, 2024



Key points

- There were 20 suspected cases of Mpox reported from 14 LGAs in 11 states. There was no laboratory confirmed case and no death was recorded.

Actions To date

- National Monkeypox Technical Working Group (TWG) is monitoring activities in all states.

Acute Flaccid Paralysis (AFP)

Week 16

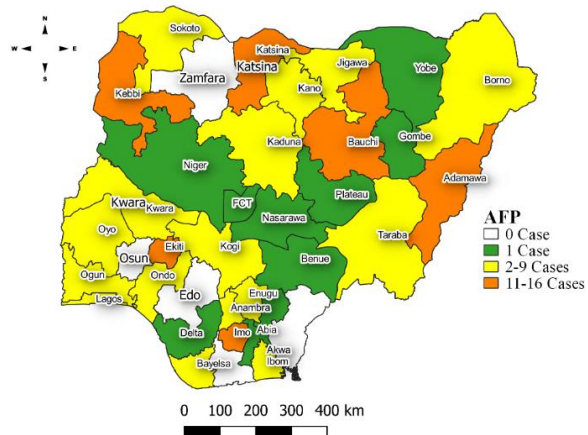
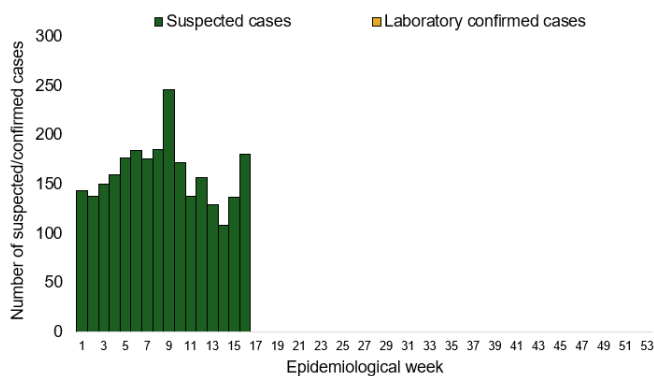
Suspected cases	Confirmed cases	Deaths	Number of States and LGAs affected
180	0	0	State: 31 + FCT LGA: 137

Year to date (week 1 – 16)

Suspected cases		Confirmed cases		Deaths		CFR	
2023	2024	2023	2024	2023	2024	2023	2024
2263	2573	0	0	0	0	0%	0%

Figure 13: Number of suspected and confirmed cases of AFP, Nigeria, weeks 1 – 16, 2023

Figure 14: Location of suspected cases of AFP by State, Nigeria, week 16, 2024



Key points

- There were 136 suspected cases of AFP reported from 106 LGAs in 32 states and FCT. There was no laboratory confirmed case and no death was recorded.

National Influenza Sentinel Surveillance

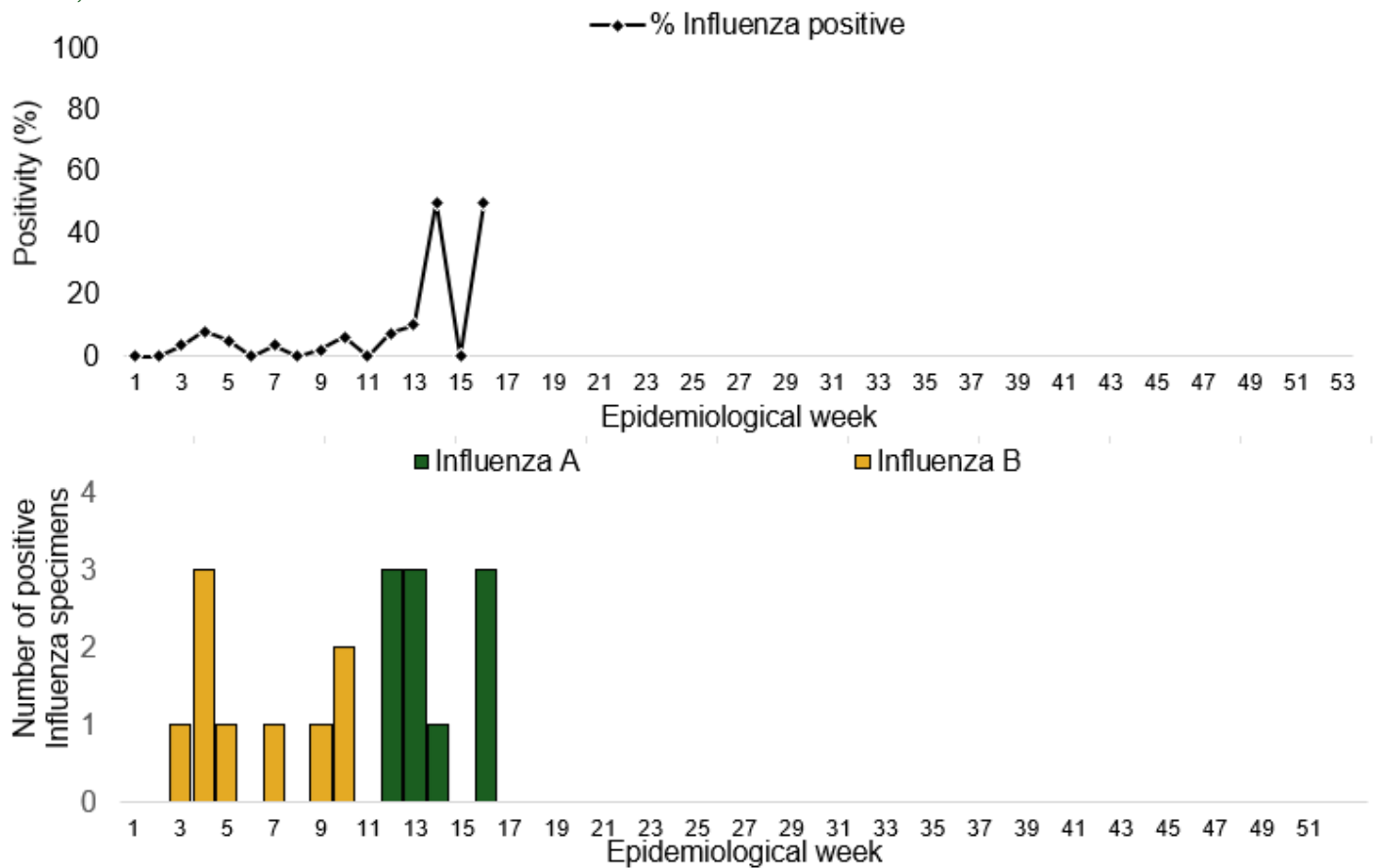
Week 16

Suspected Cases	Confirmed Cases	Confirmed Case by type	
		Influenza A	Influenza B
6	3	3	0

Year to date (week 1 – 16)

Suspected cases	Total Confirmed Cases	Confirmed cases by type	
359	19	Influenza A 10	Influenza B 9

Figure 15: Number of influenza positive specimens by type and percentage positive by epidemiological week, 2023.



Coronavirus Disease (COVID-19)

Week 16

Suspected cases	Confirmed cases	Deaths	Number of States and LGAs affected
10	10	0	State: 4 LGA: 7

Year to date (Week 1- 16)

Suspected cases		Confirmed cases		Deaths		CFR	
2023	2024	2023	2024	2023	2024	2023	2024
408	770	408	770	1	1	0.2%	0.1%

Figure 16: Epidemic curve of confirmed cases of COVID-19, Nigeria, week 1 - 16, 2024

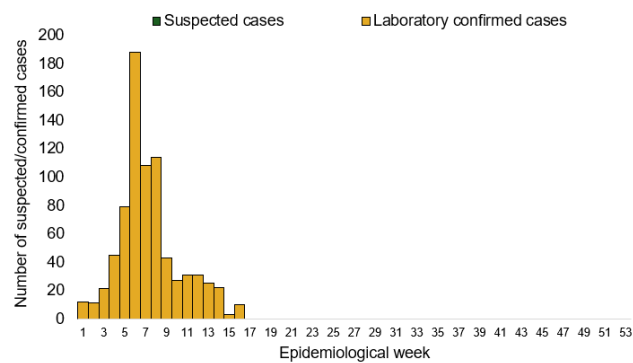
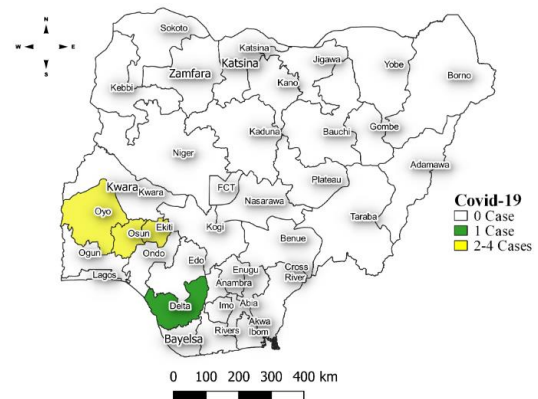


Figure 17: Location of confirmed cases of COVID-19 by State, Nigeria, as at week 16, 2024



Key points

- There were ten suspected cases of Covid 19 reported from seven LGAs in four states. There were ten confirmed cases and no death was recorded

Actions

To date:

- Multi-sectoral Public Health Emergency Operation Centres (PHEOC) activated at the National and affected States

Diphtheria

Week 16

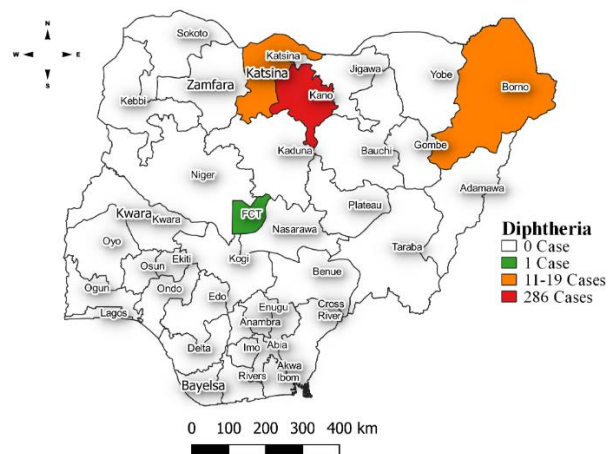
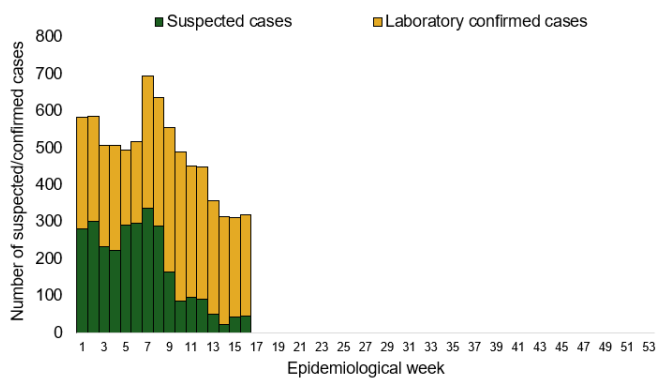
Suspected cases	Confirmed cases	Deaths	Number of States and LGAs affected
317	273	3	State: 3 + FCT LGA: 20

Year to date (week 1 – 16)

Suspected cases		Confirmed cases		Deaths		CFR	
2023	2024	2023	2024	2023	2024	2023	2024
1840	7752	974	4916	107	93	5.8%	1.2%

Figure 18: Number of suspected and confirmed cases of Diphtheria, Nigeria, weeks 1 – 16, 2024

Figure 19: Location of suspected cases of Diphtheria by State, Nigeria, week 16, 2024



Key points

- There were 317 suspected cases of Diphtheria reported from 20 LGAs in three states and FCT. There were 273 confirmed cases and three deaths were recorded.

Actions

To date

- National Diphtheria Technical Working Group (TWG) is monitoring activities in all states.
- Harmonisation of surveillance and laboratory data from across states and laboratories.
- Provision of off-site surveillance support to affected States.

Event Based Surveillance (EBS)

Week 16

Key points

For the reporting week 16

- 138 Calls were successfully routed to agents and answered
- 4 calls not routed to agents (Failed call)
- 142 total number of calls (successful and failed)
- 0 number of SMS received
- 0 WhatsApp/live chat messages received
- The percentage of failed to total inbound calls 2.8%
- 1 signal picked and escalated to Kogi State on Lassa fever
 - Sample was taken and sent to Lab result for Lassa fever was negative

For week 1 – 16

- 1,673 calls were successfully routed to agents and answered
- 85 calls not routed to agents (Failed call)
- 1,758 total inbound calls recorded
- The Percentage of failed to total inbound calls: 4.8%
- 23 Signals picked and escalated

Categories of Calls

- General inquiries 69
- Hoax call and others 25
- Report of health conditions 4
- Inquiry on Lassa fever 17
- Inquiry on malaria vaccine 0
- Health Declaration form-related queries 0
- Inquiries on Diphtheria symptoms, treatment, and Vaccine 13
- Inquiries on yellow fever vaccine 8
- Inquiries on Hepatitis 4
- Inquiries on Lassa fever vaccine 0
- Covid19 vaccination inquiries 2

Figure 20: Number of successful and failed calls, weeks 1 – 16, 2024

