



**Nigeria Centre for Disease Control and Prevention**

*Protecting the health of Nigerians*

# Weekly Epidemiological Report

Week 15: 8<sup>th</sup> – 14<sup>th</sup> April 2024

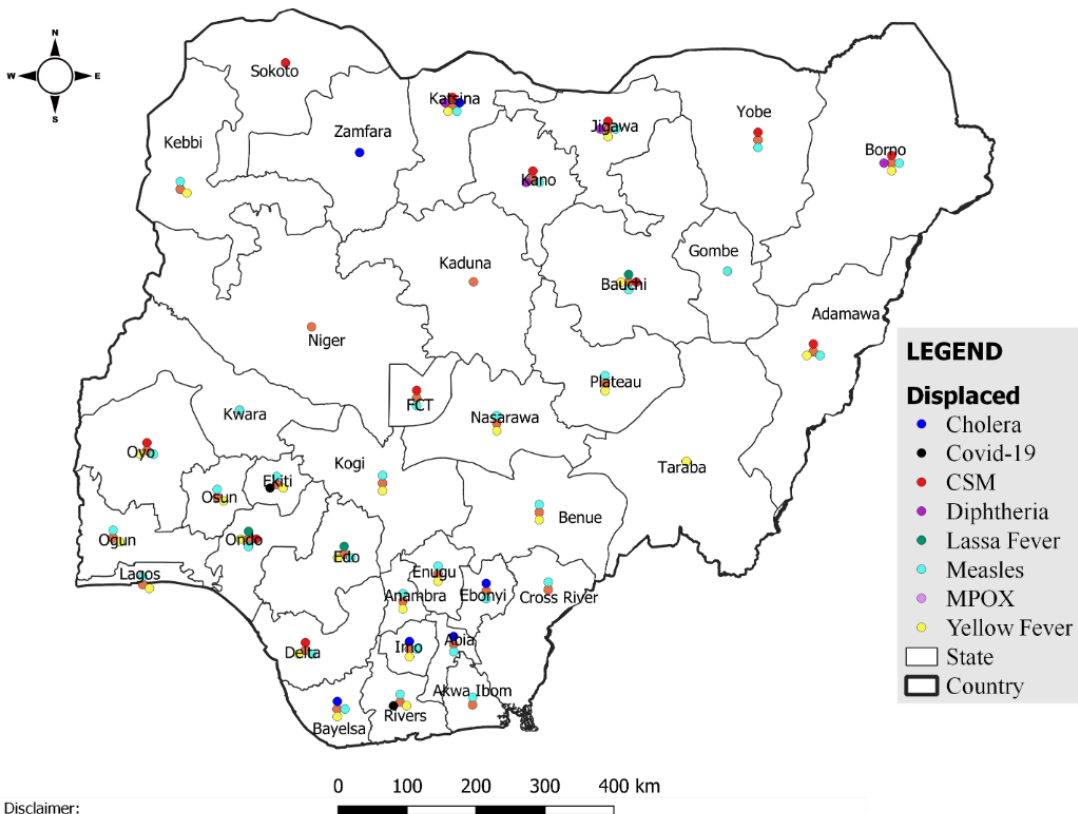
## Summary of Incidents

### Ongoing incidents

2

Ongoing incidents are defined as confirmed cases where a national EOC or equivalent has been activated (Lassa Fever and Diphtheria)

Other incidents are those with confirmed cases for which EOC is not activated



## Summary

Week 15: 8<sup>th</sup> – 14<sup>th</sup> April 2024

Lassa Fever <sup>1,2</sup>	Cerebrospinal Meningitis (CSM) <sup>1,4</sup>	Yellow Fever <sup>1,4</sup>
188 Suspected case(s)	176 Suspected case(s)	55 Suspected case(s)
15 Confirmed case(s)	0 Confirmed case(s)	0 Confirmed case(s)
1 Death(s)	1 Death(s)	0 Death(s)
Cholera <sup>1,4</sup>	Measles <sup>1,4</sup>	Mpox <sup>1,4</sup>
25 Suspected case(s)	409 Suspected case(s)	27 Suspected case(s)
0 Confirmed case(s)	24 Confirmed case(s)	1 Confirmed case(s)
1 Death(s)	1 Death(s)	0 Death(s)
Acute Flaccid Paralysis (AFP) <sup>1,4</sup>	National Sentinel influenza surveillance <sup>5</sup>	Coronavirus Disease <sup>1,</sup>
136 Suspected case(s)	0 Suspected case(s)	3 Suspected case(s)
0 Confirmed case(s)	0 Confirmed case(s)	3 Confirmed case(s)
0		0 Death(s)
Diphtheria <sup>1,4</sup>		
311 Suspected case(s)		
270 Confirmed case(s)		
6 Death(s)		

- Information for this disease was retrieved from the Technical Working Group and Situation Reports
- Case Fatality Rate (CFR) for this disease is reported for confirmed cases only.
- CFR for this disease is reported for total cases i.e. suspected + confirmed.
- Information for sentinel influenza was retrieved from the laboratory.

## Lassa Fever

### Week 15

Suspected cases	Confirmed cases	Deaths	Number of States and LGAs affected
188	15	1	State: 18 LGA: 19

### Year to date (week 1 – 15)

Suspected cases		Confirmed cases		Deaths		CFR	
2023	2024	2023	2024	2023	2024	2023	2024
4702	5669	877	832	152	152	17.3%	18.3%

Figure 1: Number of suspected and confirmed cases of Lassa Fever, Nigeria, Weeks 1 – 15, 2024

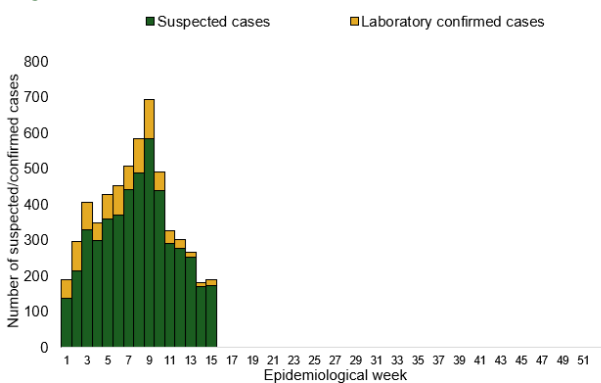
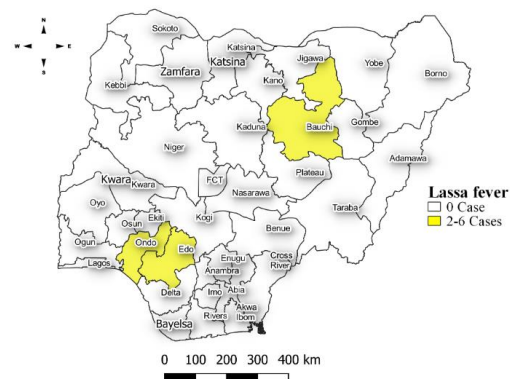


Figure 2: Location of **confirmed** cases of Lassa Fever by State, Nigeria, week 15, 2024



## Key points

- There were 188 suspected cases of Lassa Fever reported from 19 LGAs in 18 states. There were 15 laboratory confirmed cases and one death was recorded.

## Actions

### To date:

- National Lassa fever multi-partner, multi-sectoral Technical Working Group (TWG) continues to coordinate the response activities at all levels.
- Held an entry engagement meeting with the Nigerian Red Cross and IFRC on the implementation of the Disaster Response Emergency Fund (DREF) project

## Cerebrospinal Meningitis (CSM)

### Week 15

Suspected cases	Confirmed cases	Deaths	Number of States and LGAs affected
176	0	1	State: 11 + FCT LGA: 40

### Year to date (week 1 – 15)

Suspected cases		Confirmed cases		Deaths		CFR	
2023	2024	2023	2024	2023	2024	2023	2024
1420	2505	67	48	71	124	5%	4.9%

Figure 3: Number of suspected and confirmed cases of CSM, Nigeria, weeks 1 – 15, 2024

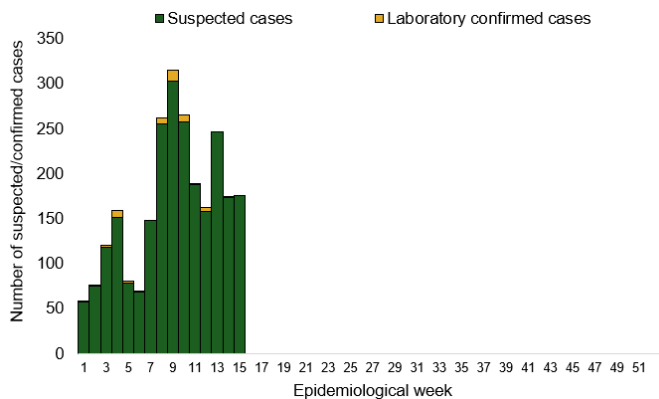
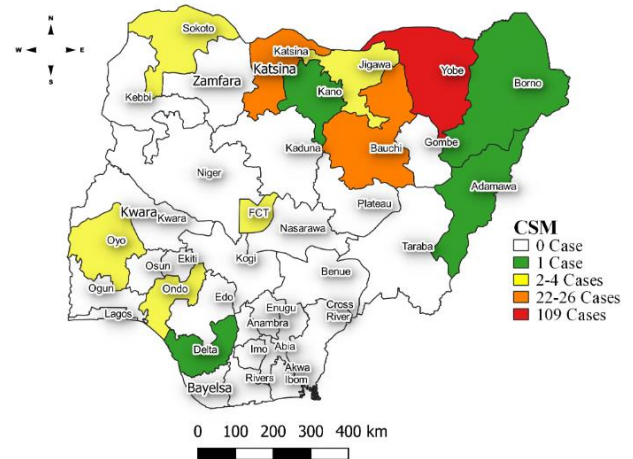


Figure 4: Location of suspected cases of CSM by State, Nigeria, week 15, 2024



### Key points

- There were 176 suspected cases of Cerebrospinal meningitis (CSM) reported from 40 LGAs in 11 states and FCT. There was no laboratory confirmed case and one death was reported.

### Actions

#### To date:

- National CSM TWG meets weekly to review reports from states and plan appropriately.

## Yellow Fever

### Week 15

Suspected cases	Confirmed cases	Deaths	Number of States and LGAs affected
55	0	0	State: 24 LGA: 47

### Year to date (week 1 – 15)

Suspected cases		Confirmed cases		Deaths		CFR	
2023	2024	2023	2024	2023	2024	2023	2024
819	883	6	1	3	1	0.4%	0.1%

Figure 5: Number of suspected and confirmed cases of Yellow Fever, Nigeria, weeks 1 – 15, 2024

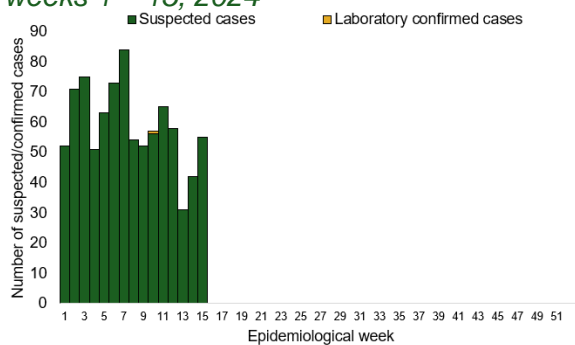
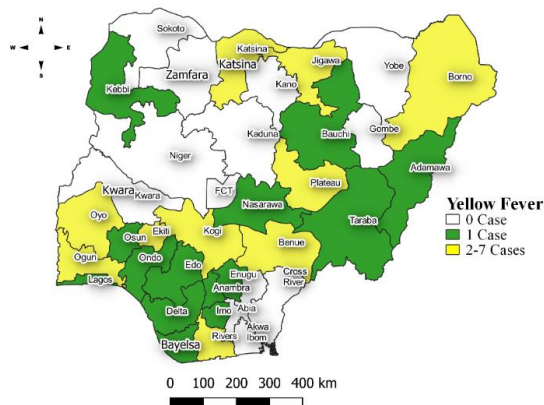


Figure 6: Location of suspected cases of Yellow Fever by States, Nigeria, week 15, 2024



### Key points

- There were 55 suspected cases of Yellow Fever (YF) reported from 47 LGAs in 24 states. There was no laboratory confirmed case and no death was recorded.

### Actions

#### To date:

- National YF multi-partner Technical Working Group (TWG) continues to coordinate activities across states.
- Harmonizing surveillance and laboratory data
- Following up with the state surveillance teams for early reporting of cases
- Coordination of yellow fever sample management and transportation from all states to the regional reference laboratories
- Regular testing of yellow fever samples in all the testing laboratories

## Cholera

### Week 15

Suspected cases	Confirmed cases	Deaths	Number of States and LGAs affected
25	0	1	State: 6 LGA: 11

### Year to date (week 1 – 15)

Suspected cases		Confirmed cases		Deaths		CFR	
2023	2024	2023	2024	2023	2024	2023	2024
2056	1046	29	3	56	21	2.7%	2%

Figure 7: Number of suspected and confirmed cases of Cholera, Nigeria, weeks 1 – 15, 2024

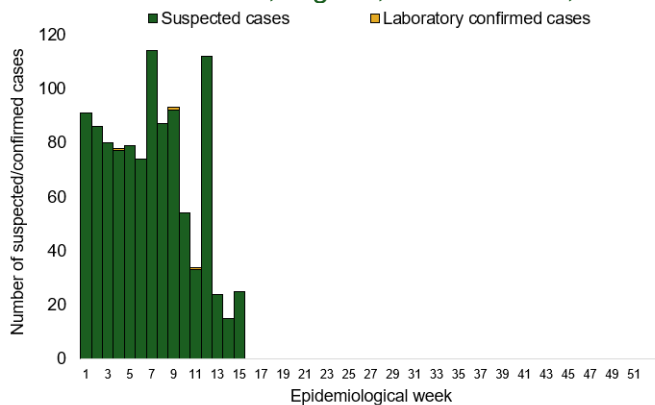
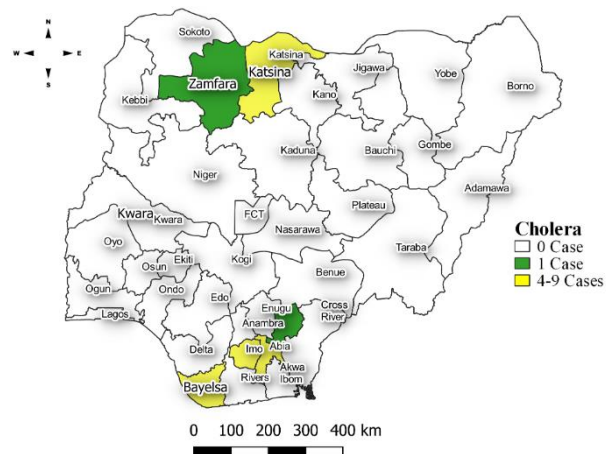


Figure 8: Location of suspected cases of Cholera by State, Nigeria, week 15, 2024



### Key points

- There were 25 suspected cases of Cholera reported from 11 LGAs in six states. There was no laboratory confirmed case and one death was recorded.

### Actions

#### To date

- National Cholera Multi-Sectoral Technical Working Group (TWG) is monitoring all states and supporting affected states.

## Measles

### Week 15

Suspected cases	Confirmed cases	Deaths	Number of States and LGAs affected
409	24	1	State: 31 + FCT LGA: 162

### Year to date (week 1 – 15)

Suspected cases		Confirmed cases		Deaths		CFR	
2023	2024	2023	2024	2023	2024	2023	2024
10068	9937	933	1326	0	57	0%	0.6%

Figure 9: Number of suspected and confirmed cases of Measles, Nigeria, weeks 1 – 15, 2024.

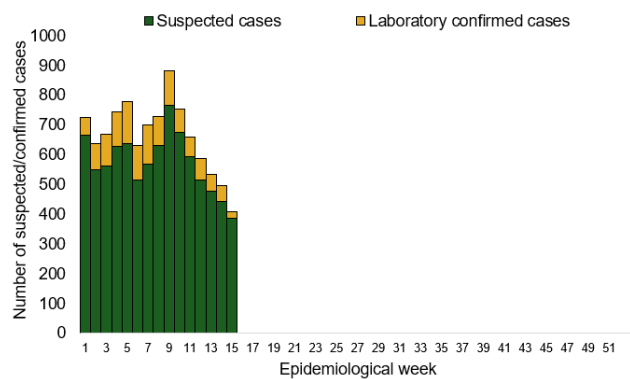
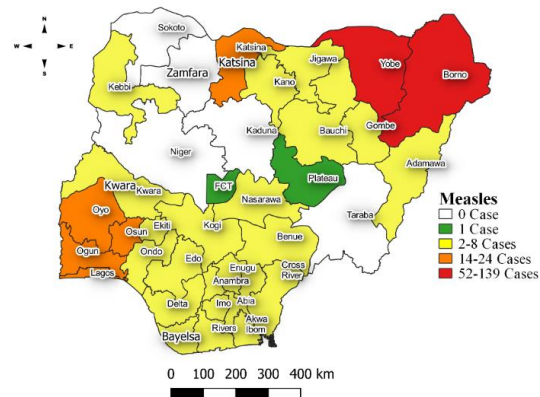


Figure 10: Location of suspected cases of Measles by State, Nigeria, week 15, 2024



### Key points

- There were 409 suspected cases of Measles reported from 162 LGAs in 31 states and FCT. There were 24 laboratory confirmed cases and one death was recorded.

### Actions

#### To date

- National Measles TWG is closely monitoring measles surveillance data and providing feedback to relevant agencies and development partners.

## Mpox

### Week 15

Suspected cases	Confirmed cases	Deaths	Number of States and LGAs affected
27	1	0	State: 8 LGA: 21

### Year to date (week 1 – 15)

Suspected cases		Confirmed cases		Deaths		CFR	
2023	2024	2023	2024	2023	2024	2023	2024
574	399	71	202	2	0	0.3%	0%

Figure 11: Number of suspected and confirmed cases of Mpox, Nigeria, weeks 1 – 15, 2024.

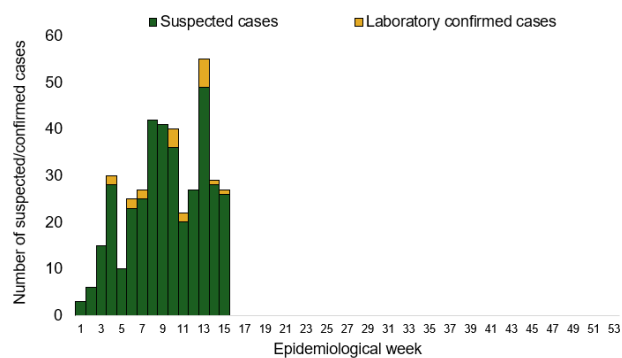
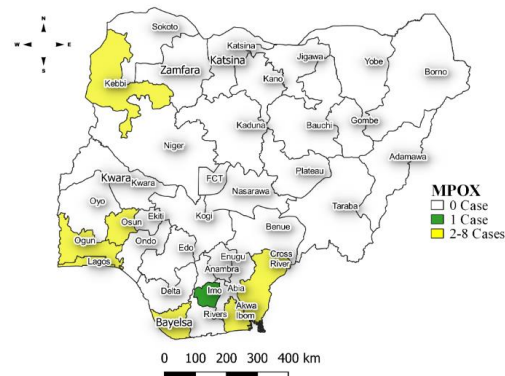


Figure 12: Location of suspected cases of Mpox by State, Nigeria, week 15, 2024



### Key points

- There were 27 suspected cases of Mpox reported from 21 LGAs in eight states. There was one laboratory confirmed case and no death was recorded.

### Actions

#### To date

- National Monkeypox Technical Working Group (TWG) is monitoring activities in all states.



## Acute Flaccid Paralysis (AFP)

### Week 15

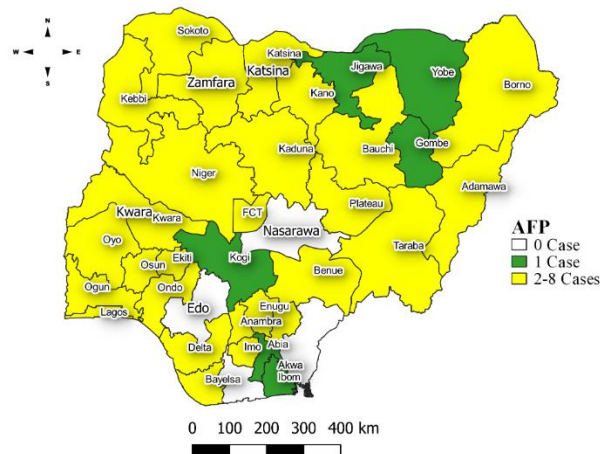
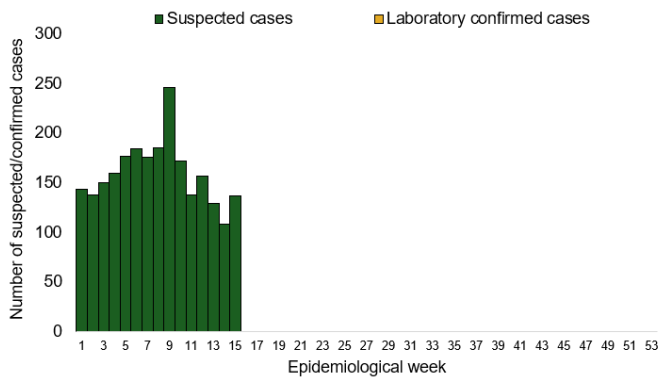
Suspected cases	Confirmed cases	Deaths	Number of States and LGAs affected
136	0	0	State: 32 + FCT LGA: 106

### Year to date (week 1 – 15)

Suspected cases		Confirmed cases		Deaths		CFR	
2023	2024	2023	2024	2023	2024	2023	2024
2132	2393	0	0	0	0	0%	0%

Figure 13: Number of suspected and confirmed cases of AFP, Nigeria, weeks 1 – 15, 2023

Figure 14: Location of suspected cases of AFP by State, Nigeria, week 15, 2024



### Key points

- There were 136 suspected cases of AFP reported from 106 LGAs in 32 states and FCT. There was no laboratory confirmed case and no death was recorded.

## National Influenza Sentinel Surveillance

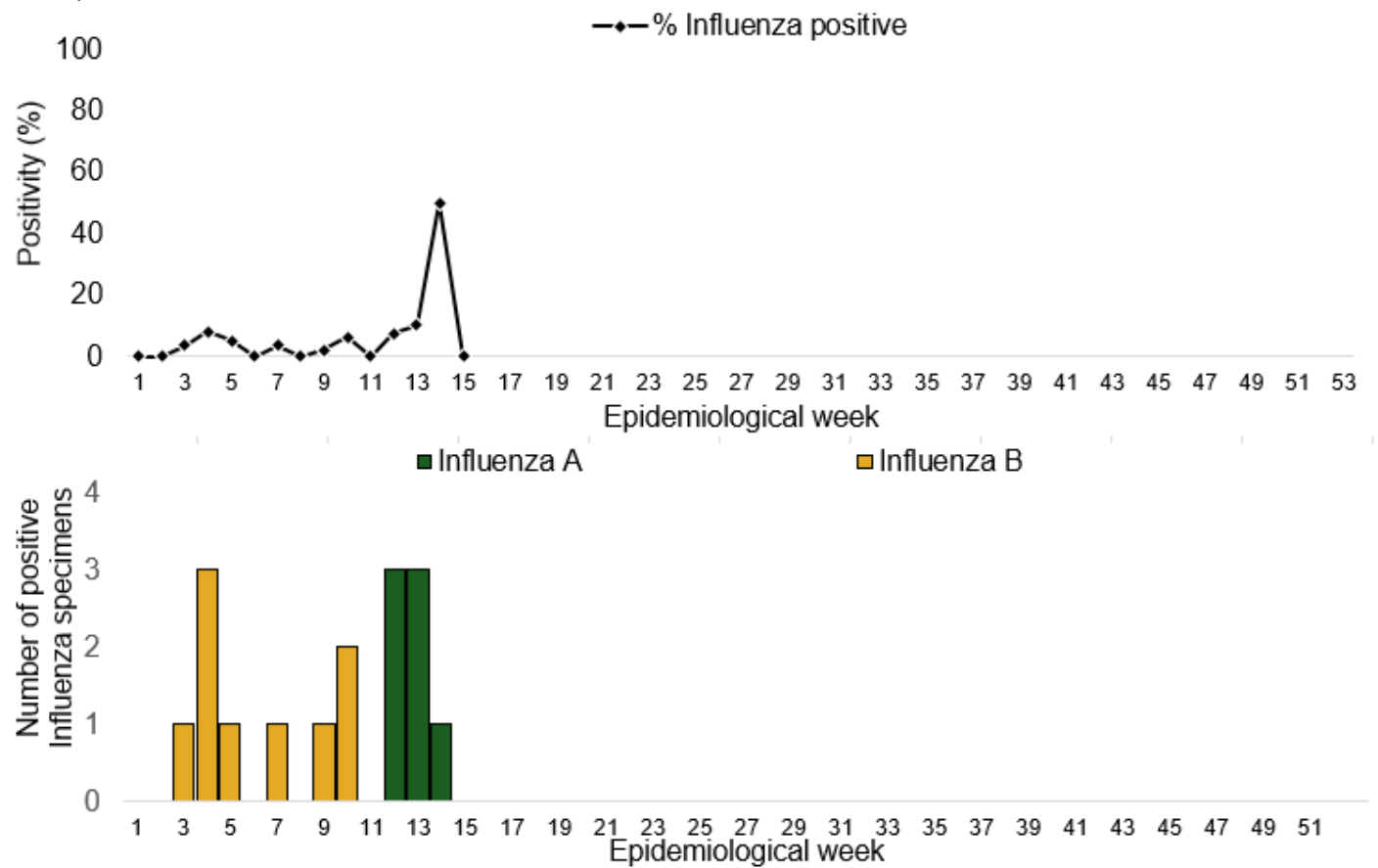
### Week 15

Suspected Cases	Confirmed Cases	Confirmed Case by type	
		Influenza A	Influenza B
0	0	0	0

### Year to date (week 1 – 15)

Suspected cases	Total Confirmed Cases	Confirmed cases by type	
353	16	Influenza A 7	Influenza B 9

Figure 15: Number of influenza positive specimens by type and percentage positive by epidemiological week, 2023.



## Coronavirus Disease (COVID-19)

### Week 15

Suspected cases	Confirmed cases	Deaths	Number of States and LGAs affected
3	3	0	State: 2 LGA: 2

### Year to date (Week 1- 15)

Suspected cases		Confirmed cases		Deaths		CFR	
2023	2024	2023	2024	2023	2024	2023	2024
397	760	397	760	1	1	0.2%	0.1%

Figure 16: Epidemic curve of confirmed cases of COVID-19, Nigeria, week 1 - 15, 2024

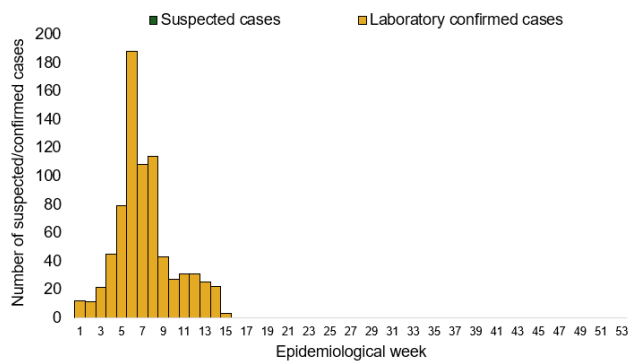
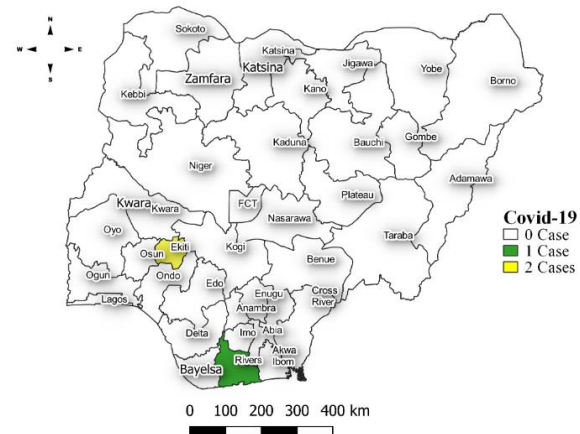


Figure 17: Location of confirmed cases of COVID-19 by State, Nigeria, as at week 15, 2024



### Key points

- There were three suspected cases of Covid 19 reported from two LGAs in Ekiti and Rivers state. There were three confirmed cases and no death was recorded

### Actions

#### To date:

- Multi-sectoral Public Health Emergency Operation Centres (PHEOC) activated at the National and affected States

## Diphtheria

### Week 15

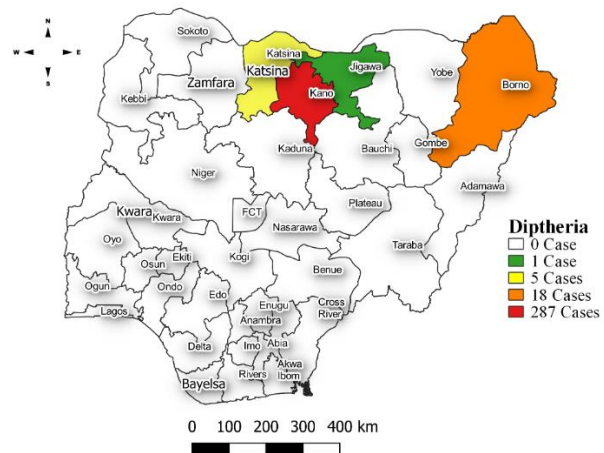
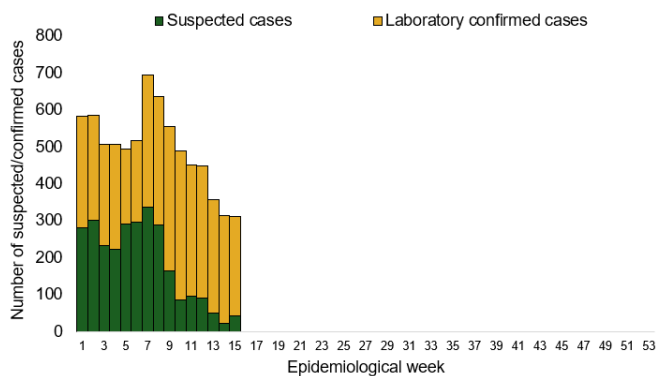
Suspected cases	Confirmed cases	Deaths	Number of States and LGAs affected
311	270	6	State: 4 LGA: 24

### Year to date (week 1 – 15)

Suspected cases		Confirmed cases		Deaths		CFR	
2023	2024	2023	2024	2023	2024	2023	2024
1746	7435	938	4643	102	90	5.8%	1.2%

Figure 18: Number of suspected and confirmed cases of Diphtheria, Nigeria, weeks 1 – 15, 2024

Figure 19: Location of suspected cases of Diphtheria by State, Nigeria, week 15, 2024



### Key points

- There were 311 suspected cases of Diphtheria reported from 24 LGAs in four states. There were 270 confirmed cases and six deaths were recorded.

### Actions To date

- National Diphtheria Technical Working Group (TWG) is monitoring activities in all states.
- Harmonisation of surveillance and laboratory data from across states and laboratories.
- Provision of off-site surveillance support to affected States.

## Event Based Surveillance (EBS)

### Week 15

#### Key points

##### For the reporting week 15

- 138 Calls were successfully routed to agents and answered
- 4 calls not routed to agents (Failed call)
- 142 total number of calls (successful and failed)
- 0 number of SMS received
- 0 WhatsApp/live chat messages received
- The percentage of failed to total inbound calls 2.8%
- 1 signal picked and escalated to Kogi State on Lassa fever
  - Sample was taken and sent to Lab result for Lassa fever was negative

##### For week 1 – 15

- 1,673 calls were successfully routed to agents and answered
- 85 calls not routed to agents (Failed call)
- 1,758 total inbound calls recorded
- The Percentage of failed to total inbound calls: 4.8%
- 23 Signals picked and escalated

#### Categories of Calls

- General inquiries 69
- Hoax call and others 25
- Report of health conditions 4
- Inquiry on Lassa fever 17
- Inquiry on malaria vaccine 0
- Health Declaration form-related queries 0
- Inquiries on Diphtheria symptoms, treatment, and Vaccine 13
- Inquiries on yellow fever vaccine 8
- Inquiries on Hepatitis 4
- Inquiries on Lassa fever vaccine 0
- Covid19 vaccination inquiries 2

Figure 20: Number of successful and failed calls, weeks 1 – 15, 2024

