



NIGERIA CENTRE FOR DISEASE CONTROL AND PREVENTION

**Nigeria Centre for Disease Control and Prevention**

*Protecting the health of Nigerians*

# Weekly Epidemiological Report

Week 14: 1<sup>st</sup> – 7<sup>th</sup> April 2024

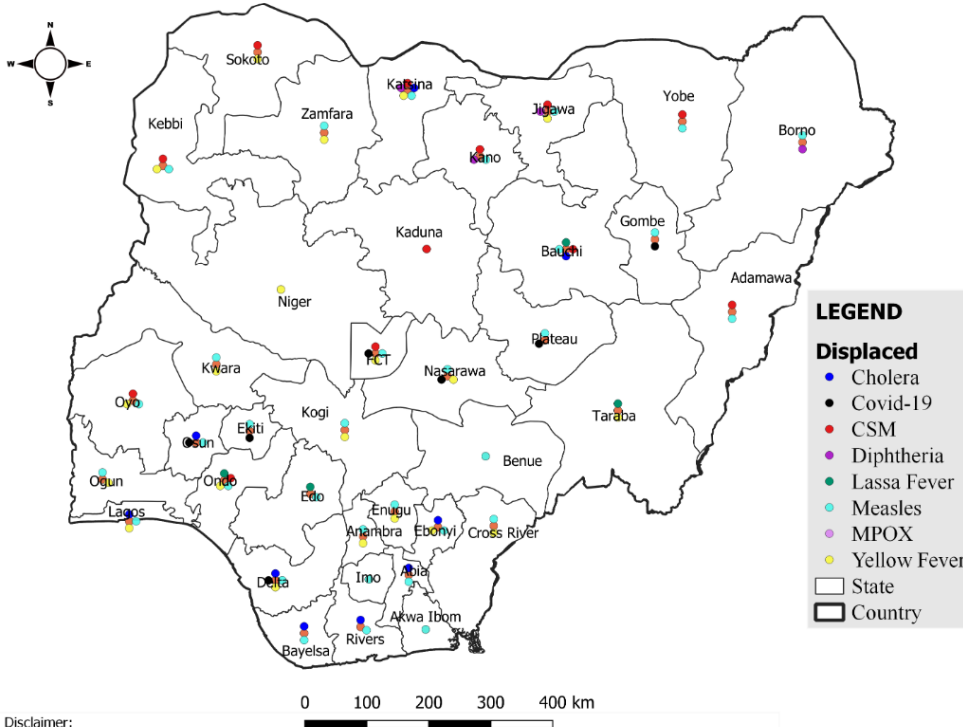
## Summary of Incidents

### Ongoing incidents

2

Ongoing incidents are defined as confirmed cases where a national EOC or equivalent has been activated (Lassa Fever and Diphtheria)

Other incidents are those with confirmed cases for which EOC is not activated



## Summary

Week 13: 1<sup>st</sup> – 7<sup>th</sup> April 2024

Lassa Fever <sup>1,2</sup>	Cerebrospinal Meningitis (CSM) <sup>1,4</sup>	Yellow Fever <sup>1,4</sup>
180 Suspected case(s)	175 Suspected case(s)	42 Suspected case(s)
11 Confirmed case(s)	1 Confirmed case(s)	0 Confirmed case(s)
0 Death(s)	6 Death(s)	0 Death(s)
Cholera <sup>1,4</sup>	Measles <sup>1,4</sup>	Mpox <sup>1,4</sup>
15 Suspected case(s)	497 Suspected case(s)	29 Suspected case(s)
0 Confirmed case(s)	53 Confirmed case(s)	1 Confirmed case(s)
2 Death(s)	1 Death(s)	0 Death(s)
Acute Flaccid Paralysis (AFP) <sup>1,4</sup>	National Sentinel influenza surveillance <sup>5</sup>	Coronavirus Disease <sup>1,</sup>
108 Suspected case(s)	2 Suspected case(s)	22 Suspected case(s)
0 Confirmed case(s)	1 Confirmed case(s)	22 Confirmed case(s)
0		1 Death(s)
Diphtheria <sup>1,4</sup>		
314 Suspected case(s)		
293 Confirmed case(s)		
10 Death(s)		

- Information for this disease was retrieved from the Technical Working Group and Situation Reports
- Case Fatality Rate (CFR) for this disease is reported for confirmed cases only.
- CFR for this disease is reported for total cases i.e. suspected + confirmed.
- Information for sentinel influenza was retrieved from the laboratory.

## Lassa Fever

### Week 14

Suspected cases	Confirmed cases	Deaths	Number of States and LGAs affected
180	11	0	State: 20 + FCT LGA: 27

### Year to date (week 1 – 14)

Suspected cases		Confirmed cases		Deaths		CFR	
2023	2024	2023	2024	2023	2024	2023	2024
4555	5481	869	817	151	151	17.4%	18.5%

Figure 1: Number of suspected and confirmed cases of Lassa Fever, Nigeria, Weeks 1 – 14, 2024

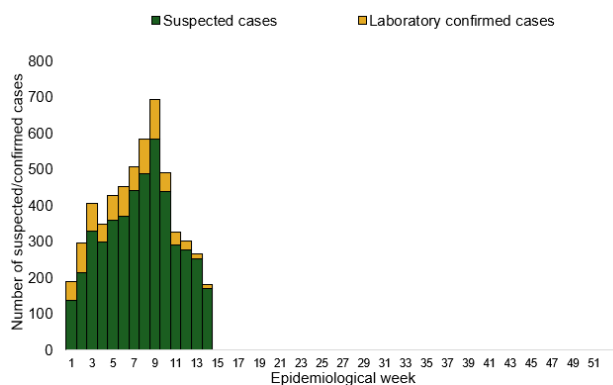
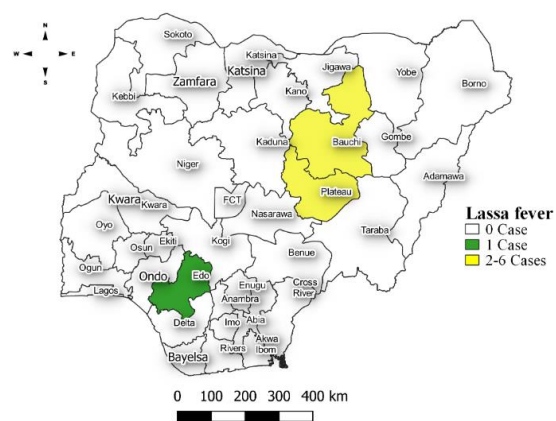


Figure 2: Location of **confirmed** cases of Lassa Fever by State, Nigeria, week 14, 2024



## Key points

- There were 180 suspected cases of Lassa Fever reported from 27 LGAs in 20 states and FCT. There were 11 laboratory confirmed cases and no deaths were recorded.

## Actions

### To date:

- National Lassa fever multi-partner, multi-sectoral Technical Working Group (TWG) continues to coordinate the response activities at all levels.
- Supported field deployments for Environmental and Rodent Control intervention for Lassa fever in collaboration with the Federal Ministry of Environment
- Engaged with the Red Cross for support of Lassa fever response at the community level
- Conclude the APHEF proposal

## Cerebrospinal Meningitis (CSM)

### Week 14

Suspected cases	Confirmed cases	Deaths	Number of States and LGAs affected
175	1	0	State: 11 + FCT LGA: 39

### Year to date (week 1 – 14)

Suspected cases		Confirmed cases		Deaths		CFR	
2023	2024	2023	2024	2023	2024	2023	2024
1249	2329	64	48	62	123	4.9%	5.3%

Figure 3: Number of suspected and confirmed cases of CSM, Nigeria, weeks 1 – 14, 2024

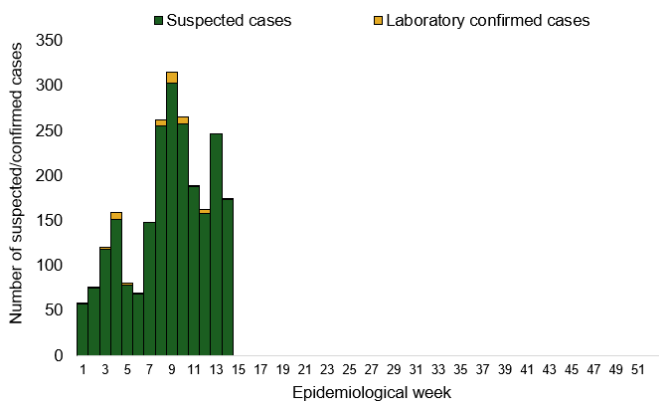
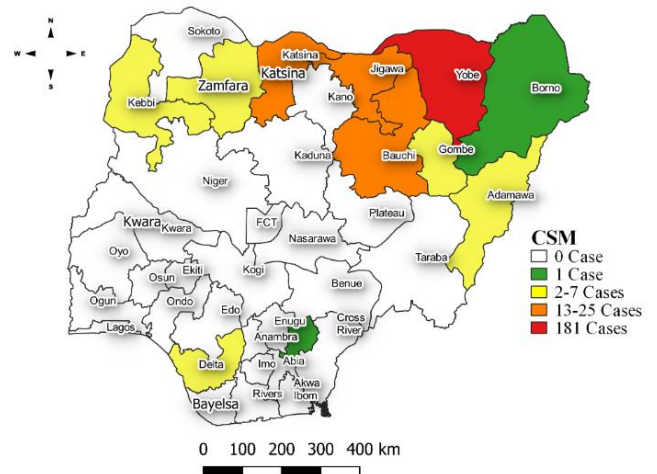


Figure 4: Location of suspected cases of CSM by State, Nigeria, week 14, 2024



### Key points

- There were 175 suspected cases of Cerebrospinal meningitis (CSM) reported from 39 LGAs in 11 states and FCT. There was one laboratory confirmed case and six deaths were reported.

### Actions

#### To date:

- National CSM TWG meets weekly to review reports from states and plan appropriately.

## Yellow Fever

### Week 14

Suspected cases	Confirmed cases	Deaths	Number of States and LGAs affected
42	0	0	State: 20 + FCT LGA: 33

### Year to date (week 1 – 14)

Suspected cases		Confirmed cases		Deaths		CFR	
2023	2024	2023	2024	2023	2024	2023	2024
763	829	4	1	3	1	0.4%	0.1%

Figure 5: Number of suspected and confirmed cases of Yellow Fever, Nigeria, weeks 1 – 14, 2024

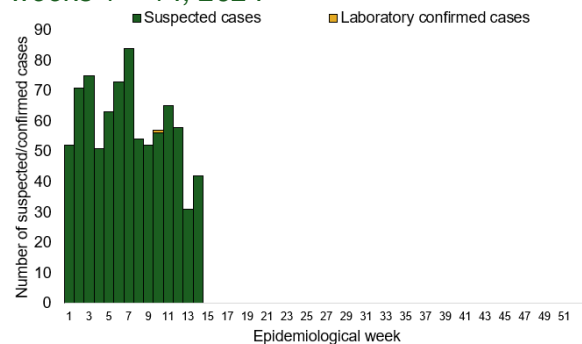
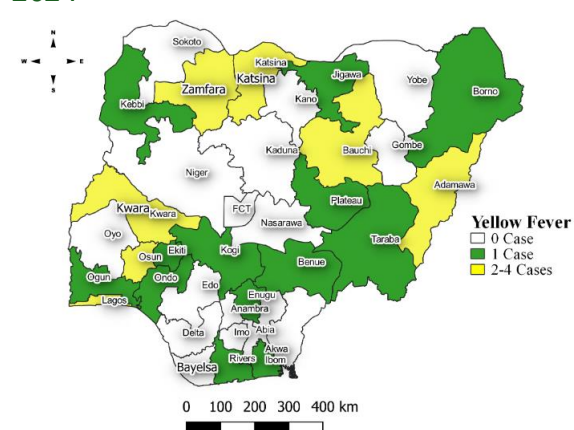


Figure 6: Location of suspected cases of Yellow Fever by States, Nigeria, week 14, 2024



### Key points

- There were 42 suspected cases of Yellow Fever (YF) reported from 33 LGAs in 20 states and FCT. There was no laboratory confirmed case and no death was recorded.

### Actions

#### To date:

- National YF multi-partner Technical Working Group (TWG) continues to coordinate activities across states.
- Harmonizing surveillance and laboratory data
- Following up with the state surveillance teams for early reporting of cases
- Coordination of yellow fever sample management and transportation from all states to the regional reference laboratories
- Regular testing of yellow fever samples in all the testing laboratories

## Cholera

### Week 14

Suspected cases	Confirmed cases	Deaths	Number of States and LGAs affected
15	0	0	State: 9 LGA: 10

### Year to date (week 1 – 14)

Suspected cases		Confirmed cases		Deaths		CFR	
2023	2024	2023	2024	2023	2024	2023	2024
2018	1021	29	3	56	20	2.8%	1.9%

Figure 7: Number of suspected and confirmed cases of Cholera, Nigeria, weeks 1 – 14, 2024

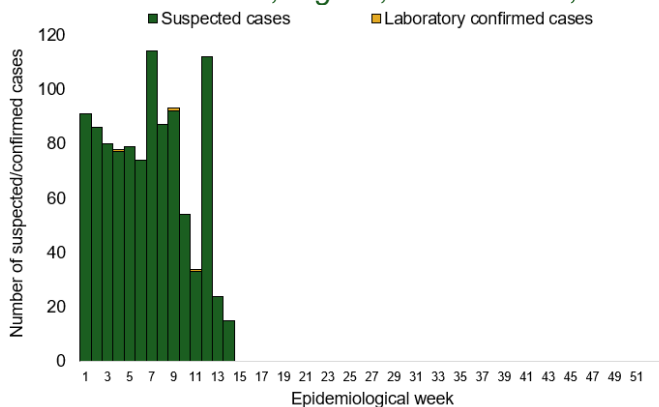
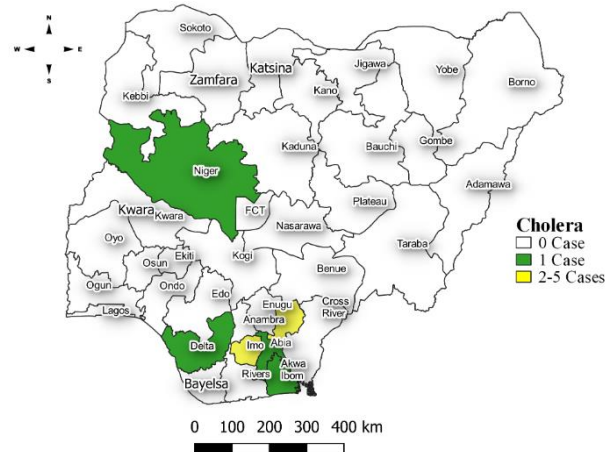


Figure 8: Location of suspected cases of Cholera by State, Nigeria, week 14, 2024



### Key points

- There were 15 suspected cases of Cholera reported from 10 LGAs in nine states. There was no laboratory confirmed case and two deaths were recorded.

### Actions To date

- National Cholera Multi-Sectoral Technical Working Group (TWG) is monitoring all states and supporting affected states.

## Measles

### Week 14

Suspected cases	Confirmed cases	Deaths	Number of States and LGAs affected
497	53	1	State: 32 + FCT LGA: 162

### Year to date (week 1 – 14)

Suspected cases		Confirmed cases		Deaths		CFR	
2023	2024	2023	2024	2023	2024	2023	2024
9391	9528	875	1302	0	56	0%	0.6%

Figure 9: Number of suspected and confirmed cases of Measles, Nigeria, weeks 1 – 14, 2024.

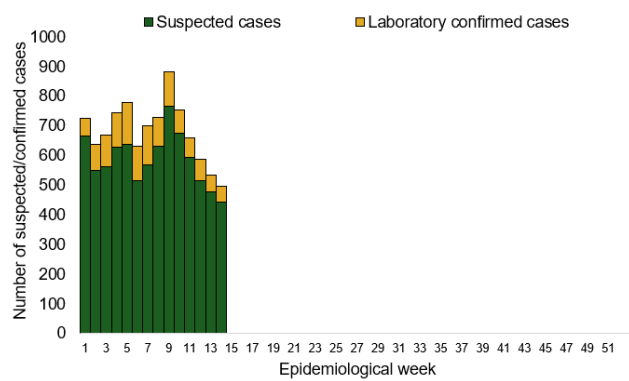
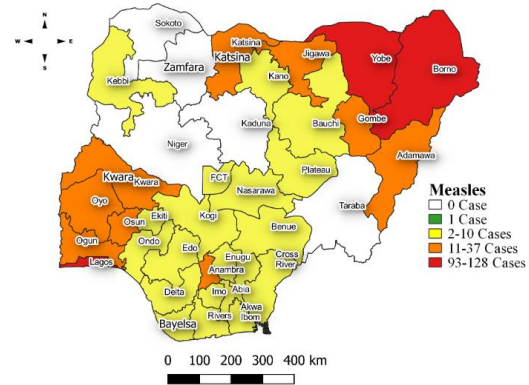


Figure 10: Location of suspected cases of Measles by State, Nigeria, week 14, 2024



### Key points

- There were 497 suspected cases of Measles reported from 162 LGAs in 32 states and FCT. There were 53 laboratory confirmed cases and one death was recorded.

### Actions

#### To date

- National Measles TWG is closely monitoring measles surveillance data and providing feedback to relevant agencies and development partners.

# Mpox

## Week 14

Suspected cases	Confirmed cases	Deaths	Number of States and LGAs affected
29	1	0	State: 7 LGA: 13

## Year to date (week 1 – 14)

Suspected cases		Confirmed cases		Deaths		CFR	
2023	2024	2023	2024	2023	2024	2023	2024
547	372	70	19	2	0	0.4%	0%

Figure 11: Number of suspected and confirmed cases of Mpox, Nigeria, weeks 1 – 14, 2024.

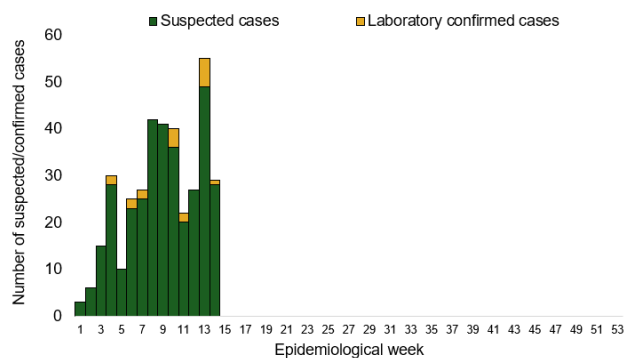
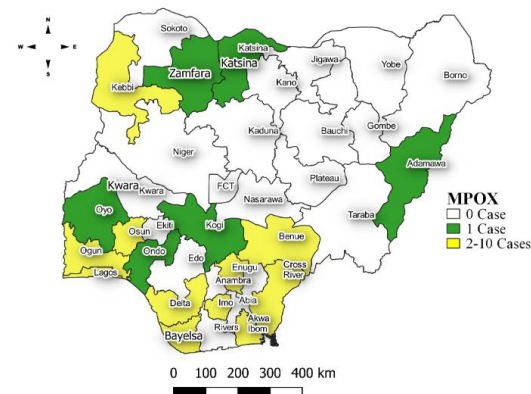


Figure 12: Location of suspected cases of Mpox by State, Nigeria, week 14, 2024



### Key points

- There were 29 suspected cases of Mpox reported from 13 LGAs in seven states. There was one laboratory confirmed case and no death was recorded.

### Actions To date

- National Monkeypox Technical Working Group (TWG) is monitoring activities in all states.



## Acute Flaccid Paralysis (AFP)

### Week 14

Suspected cases	Confirmed cases	Deaths	Number of States and LGAs affected
108	0	0	State: 31 + FCT LGA: 89

### Year to date (week 1 – 14)

Suspected cases		Confirmed cases		Deaths		CFR	
2023	2024	2023	2024	2023	2024	2023	2024
2006	2257	0	0	0	0	0%	0%

Figure 13: Number of suspected and confirmed cases of AFP, Nigeria, weeks 1 – 14, 2023

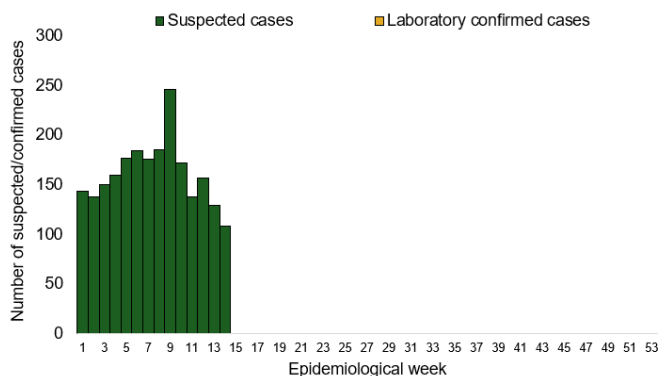
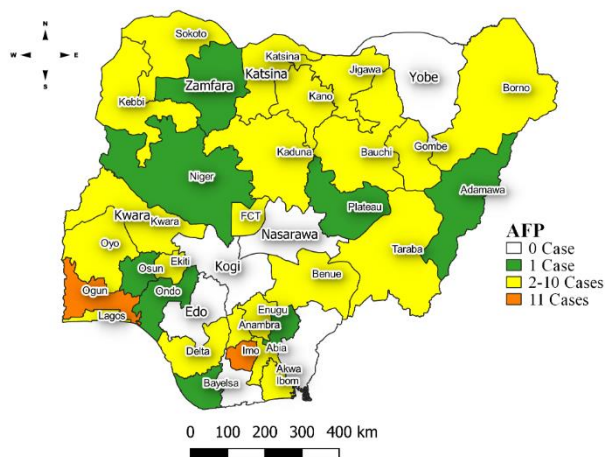


Figure 14: Location of suspected cases of AFP by State, Nigeria, week 14, 2024



### Key points

- There were 108 suspected cases of AFP reported from 89 LGAs in 31 states and FCT. There was no laboratory confirmed case and no death was recorded.

## National Influenza Sentinel Surveillance

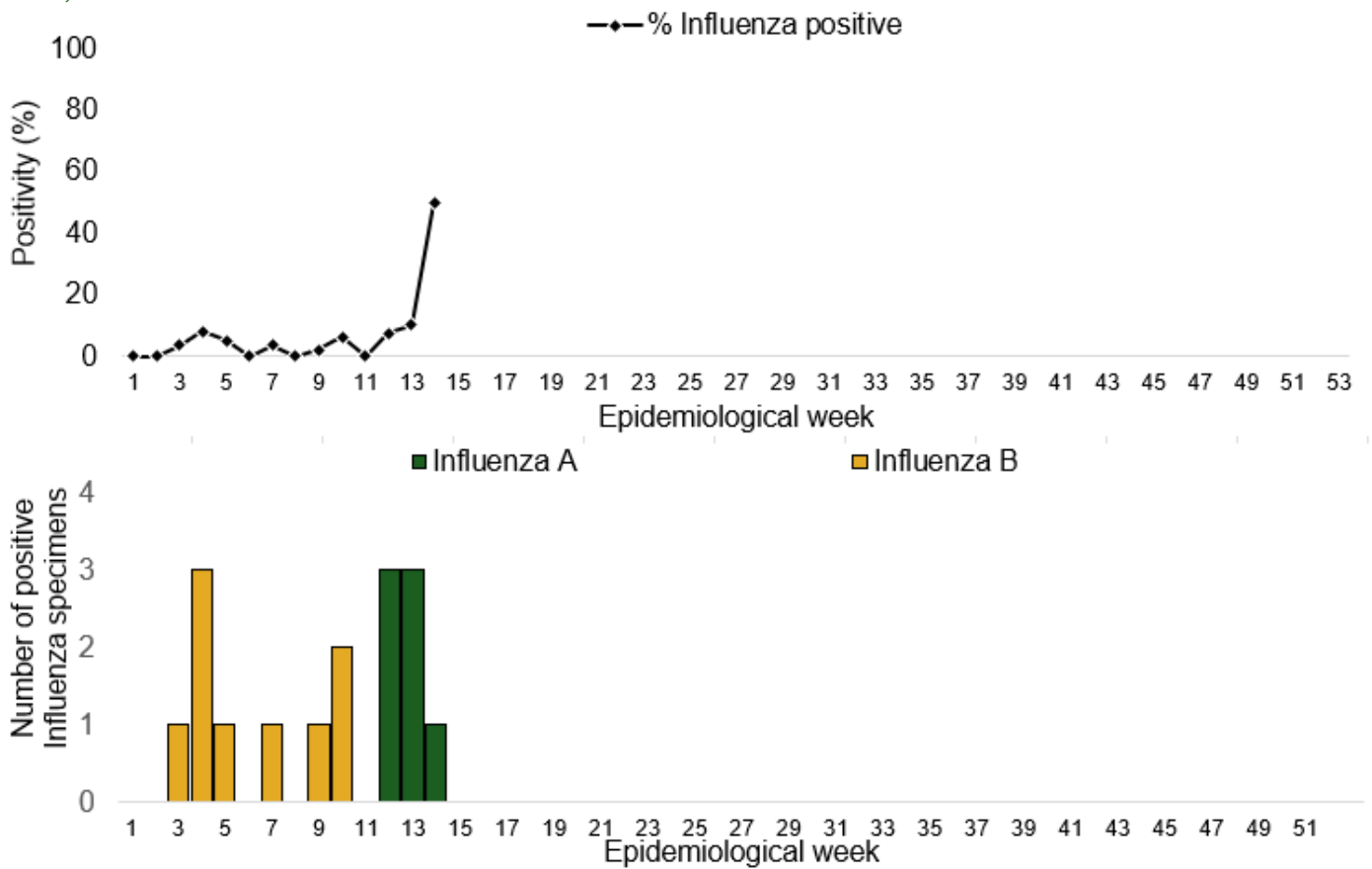
### Week 14

Suspected Cases	Confirmed Cases	Confirmed Case by type	
		Influenza A	Influenza B
2	1	1	0

### Year to date (week 1 – 14)

Suspected cases	Total Confirmed Cases	Confirmed cases by type	
353	16	Influenza A 7	Influenza B 9

Figure 15: Number of influenza positive specimens by type and percentage positive by epidemiological week, 2023.



## Coronavirus Disease (COVID-19)

### Week 14

Suspected cases	Confirmed cases	Deaths	Number of States and LGAs affected
22	22	1	State: 6 + FCT LGA: 15

### Year to date (Week 1- 14)

Suspected cases		Confirmed cases		Deaths		CFR	
2023	2024	2023	2024	2023	2024	2023	2024
390	757	390	757	1	1	0.2%	0.1%

Figure 16: Epidemic curve of confirmed cases of COVID-19, Nigeria, week 1 - 14, 2024

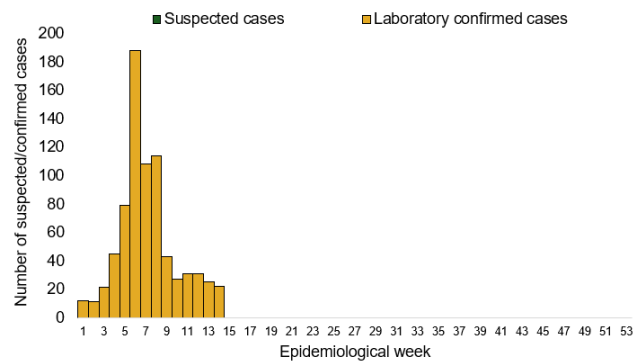
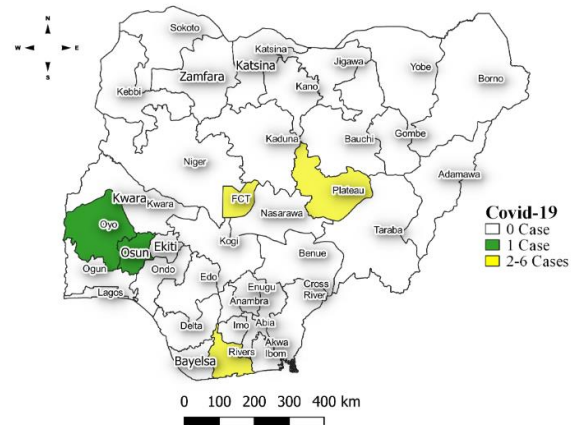


Figure 17: Location of confirmed cases of COVID-19 by State, Nigeria, as at week 14, 2024



### Key points

- There were 22 suspected cases of Covid 19 reported from 15 LGAs in six states and FCT. There were 22 confirmed cases and one death was recorded

### Actions

#### To date:

- Multi-sectoral Public Health Emergency Operation Centres (PHEOC) activated at the National and affected States

## Diphtheria

### Week 14

Suspected cases	Confirmed cases	Deaths	Number of States and LGAs affected
314	293	10	State: 4 LGA: 27

### Year to date (week 1 – 14)

Suspected cases		Confirmed cases		Deaths		CFR	
2023	2024	2023	2024	2023	2024	2023	2024
1636	7124	888	4373	100	84	6.1%	1.2%

Figure 18: Number of suspected and confirmed cases of Diphtheria, Nigeria, weeks 1 – 14, 2024

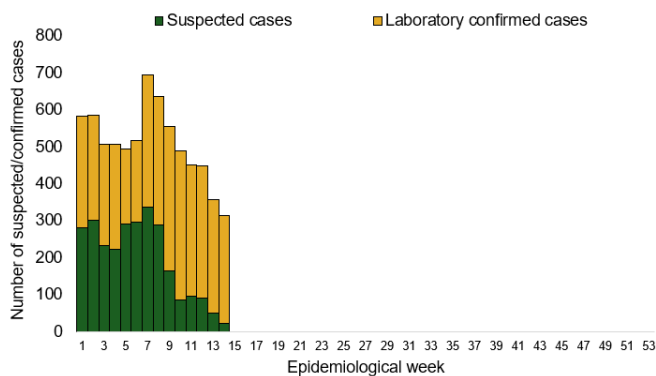
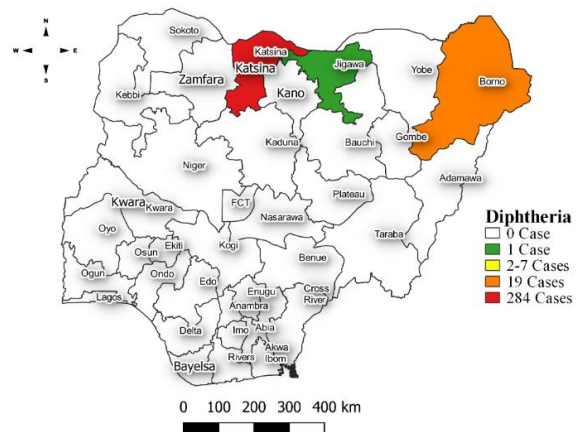


Figure 19: Location of suspected cases of Diphtheria by State, Nigeria, week 14, 2024



## Key points

- There were 314 suspected cases of Diphtheria reported from 27 LGAs in four states. There were 293 confirmed cases and four deaths were recorded.

## Actions To date

- National Diphtheria Technical Working Group (TWG) is monitoring activities in all states.
- Harmonisation of surveillance and laboratory data from across states and laboratories.
- Provision of off-site surveillance support to affected States.

## Event Based Surveillance (EBS)

### Week 14

#### Key points

##### For the reporting week 14

- 143 Calls were successfully routed to agents and answered
- 1 call not routed to agents (Failed call)
- 144 total number of calls (successful and failed)
- 0 number of SMS received
- 0 WhatsApp/live chat messages received
- The percentage of failed to total inbound calls 0.7%
- 1 signal picked and escalated to Kogi State on Lassa fever
  - Sample was taken and sent to Lab as we await laboratory results for follow up

##### For week 1 – 14

- 1,535 calls were successfully routed to agents and answered
- 81 calls not routed to agents (Failed call)
- 1,616 total inbound calls recorded
- The Percentage of failed to total inbound calls: 5.0%
- 22 Signals picked and escalated

#### Categories of Calls

- General inquiries 73
- Hoax call and others 20
- Report of health conditions 2
- Inquiry on Lassa fever 15
- Inquiry on malaria vaccine 1
- Health Declaration form-related queries 0
- Inquiries on Diphtheria symptoms, treatment, and Vaccine 12
- Inquiries on yellow fever vaccine 6
- Inquiries on Hepatitis 4
- Inquiries on Lassa fever vaccine 0
- COVID-19 vaccination inquiries 10

Figure 20: Number of successful and failed calls, weeks 1 – 14, 2024

