



Nigeria Centre for Disease Control and Prevention

Protecting the health of Nigerians

Weekly Epidemiological Report

Week 13: 25th – 31st March 2024

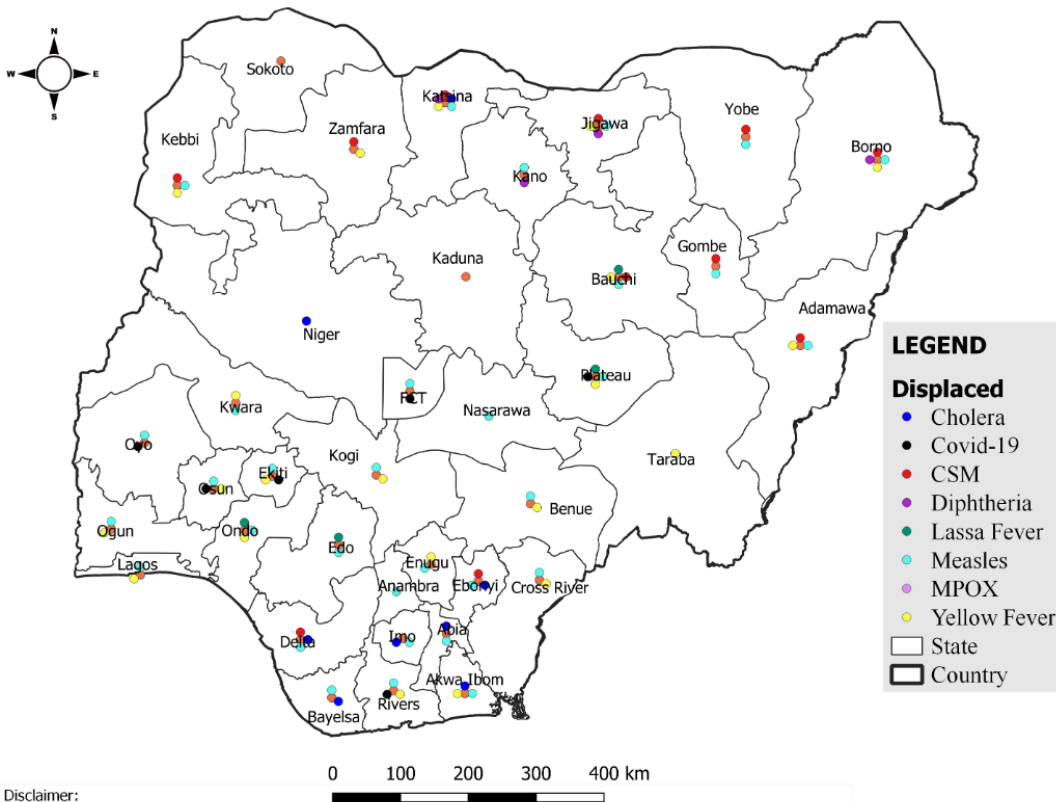
Summary of Incidents

Ongoing incidents

2

Ongoing incidents are defined as confirmed cases where a national EOC or equivalent has been activated (Lassa Fever and Diphtheria)

Other incidents are those with confirmed cases for which EOC is not activated



Data Source: SITAware

Summary

Week 13: 25th – 31st March 2024

Lassa Fever ^{1,2}	Cerebrospinal Meningitis (CSM) ^{1,4}	Yellow Fever ^{1,4}
266 Suspected case(s)	247 Suspected case(s)	31 Suspected case(s)
15 Confirmed case(s)	0 Confirmed case(s)	0 Confirmed case(s)
2 Death(s)	7 Death(s)	0 Death(s)
Cholera ^{1,4}	Measles ^{1,4}	Mpox ^{1,4}
24 Suspected case(s)	535 Suspected case(s)	55 Suspected case(s)
0 Confirmed case(s)	57 Confirmed case(s)	6 Confirmed case(s)
0 Death(s)	0 Death(s)	0 Death(s)
Acute Flaccid Paralysis (AFP) ^{1,4}	National Sentinel influenza surveillance ⁵	Coronavirus Disease ^{1,}
129 Suspected case(s)	29 Suspected case(s)	25 Suspected case(s)
0 Confirmed case(s)	3 Confirmed case(s)	25 Confirmed case(s)
0		0 Death(s)
Diphtheria ^{1,4}		
356 Suspected case(s)		
306 Confirmed case(s)		
6 Death(s)		

- Information for this disease was retrieved from the Technical Working Group and Situation Reports
- Case Fatality Rate (CFR) for this disease is reported for confirmed cases only.
- CFR for this disease is reported for total cases i.e. suspected + confirmed.
- Information for sentinel influenza was retrieved from the laboratory.

Lassa Fever

Week 13

Suspected cases	Confirmed cases	Deaths	Number of States and LGAs affected
266	15	2	State: 20 + FCT LGA: 28

Year to date (week 1 – 13)

Suspected cases		Confirmed cases		Deaths		CFR	
2023	2024	2023	2024	2023	2024	2023	2024
4338	5295	846	806	148	151	17.5%	18.7%

Figure 1: Number of suspected and confirmed cases of Lassa Fever, Nigeria, Weeks 1 – 13, 2024

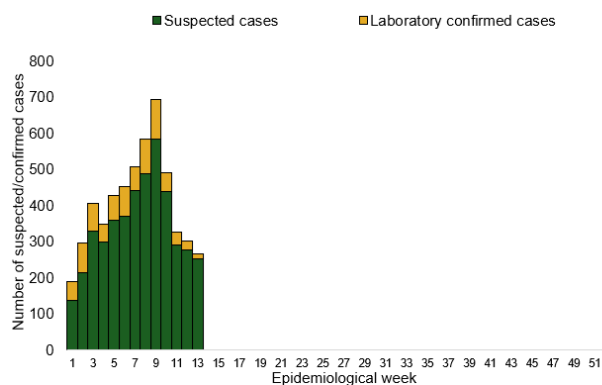
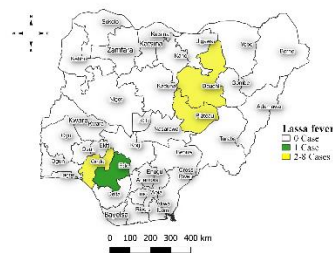


Figure 2: Location of **confirmed** cases of Lassa Fever by State, Nigeria, week 13, 2024



Key points

- There were 266 suspected cases of Lassa Fever reported from 28 LGAs in 20 states and FCT. There were 15 laboratory confirmed cases and two deaths were recorded.

Actions

To date:

- National Lassa fever multi-partner, multi-sectoral Technical Working Group (TWG) continues to coordinate the response activities at all levels.
- Conducted an Early Action review (EAR) using the 7-1-7 timeliness metrics

Cerebrospinal Meningitis (CSM)

Week 13

Suspected cases	Confirmed cases	Deaths	Number of States and LGAs affected
247	0	7	State: 11 LGA: 41

Year to date (week 1 – 13)

Suspected cases		Confirmed cases		Deaths		CFR	
2023	2024	2023	2024	2023	2024	2023	2024
1042	2154	63	47	54	117	5.1%	5.4%

Figure 3: Number of suspected and confirmed cases of CSM, Nigeria, weeks 1 – 13, 2024

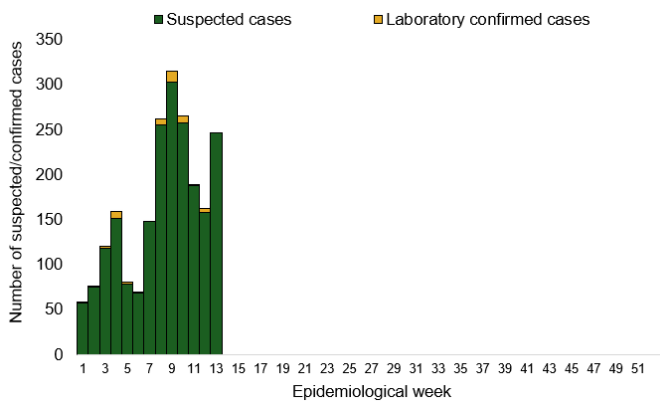
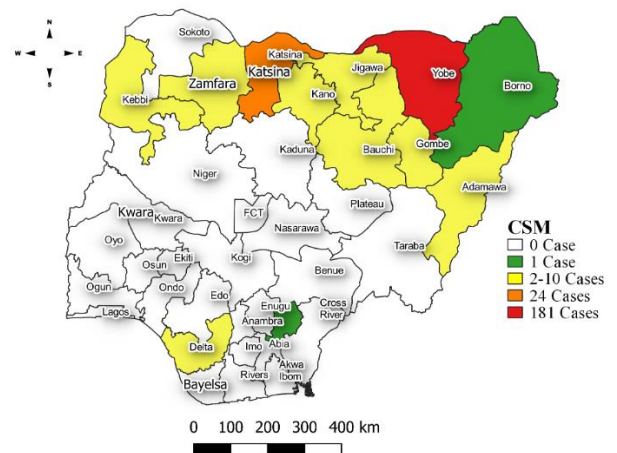


Figure 4: Location of suspected cases of CSM by State, Nigeria, week 13, 2024



Key points

- There were 247 suspected cases of Cerebrospinal meningitis (CSM) reported from 41 LGAs in 11 states. There was no laboratory confirmed case and seven deaths were reported.

Actions

To date:

- National CSM TWG meets weekly to review reports from states and plan appropriately.

Yellow Fever

Week 13

Suspected cases	Confirmed cases	Deaths	Number of States and LGAs affected
31	0	0	State: 21 LGA: 29

Year to date (week 1 – 13)

Suspected cases		Confirmed cases		Deaths		CFR	
2023	2024	2023	2024	2023	2024	2023	2024
717	786	3	1	3	1	0.4%	0.1%

Figure 5: Number of suspected and confirmed cases of Yellow Fever, Nigeria, weeks 1 – 13, 2024

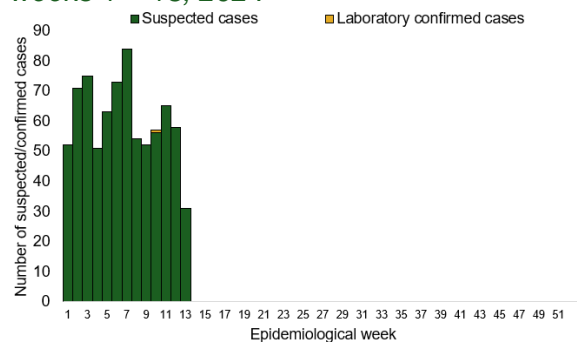
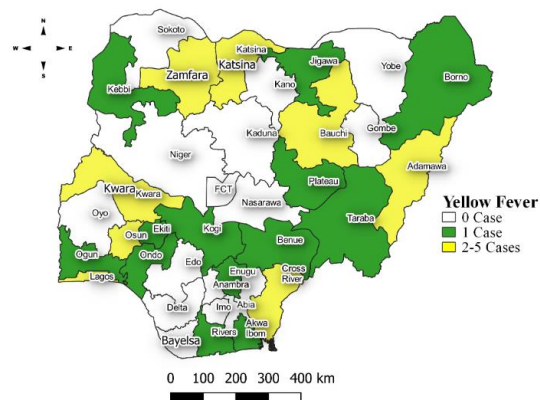


Figure 6: Location of suspected cases of Yellow Fever by States, Nigeria, week 13, 2024



Key points

- There were 31 suspected cases of Yellow Fever (YF) reported from 29 LGAs in 21 states. There was no laboratory confirmed case and no death was recorded.

Actions

To date:

- National YF multi-partner Technical Working Group (TWG) continues to coordinate activities across states.
- Harmonizing surveillance and laboratory data
- Following up with the state surveillance teams for early reporting of cases
- Coordination of yellow fever sample management and transportation from all states to the regional reference laboratories
- Regular testing of yellow fever samples in all the testing laboratories

Cholera

Week 13

Suspected cases	Confirmed cases	Deaths	Number of States and LGAs affected
24	0	0	State: 8 LGA: 10

Year to date (week 1 – 13)

Suspected cases		Confirmed cases		Deaths		CFR	
2023	2024	2023	2024	2023	2024	2023	2024
1972	1006	29	3	53	18	2.7%	1.8%

Figure 7: Number of suspected and confirmed cases of Cholera, Nigeria, weeks 1 – 13, 2024

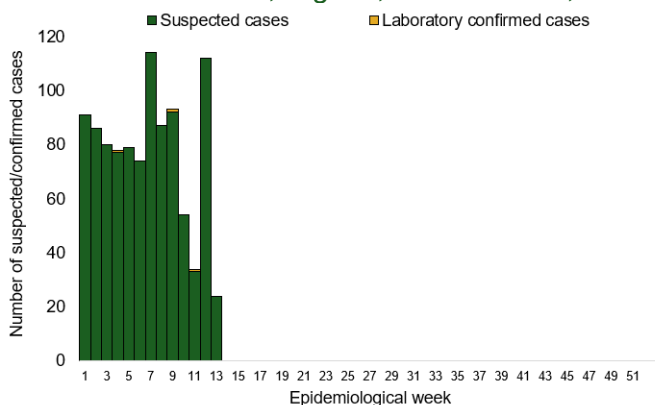
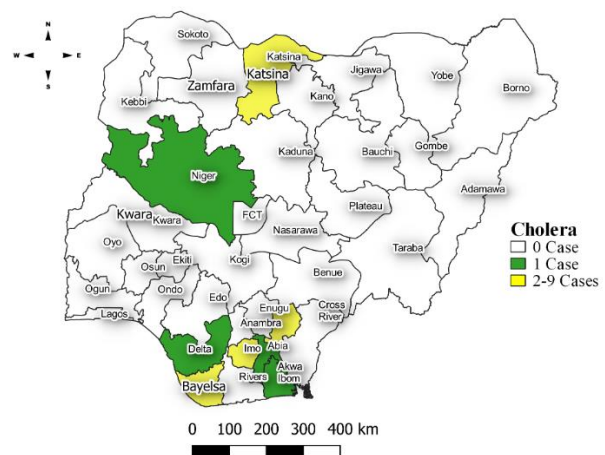


Figure 8: Location of suspected cases of Cholera by State, Nigeria, week 13, 2024



Key points

- There were 24 suspected cases of Cholera reported from 10 LGAs in eight states. There was no laboratory confirmed case and no death was recorded.

Actions To date

- National Cholera Multi-Sectoral Technical Working Group (TWG) is monitoring all states and supporting affected states.

Measles

Week 13

Suspected cases	Confirmed cases	Deaths	Number of States and LGAs affected
535	57	0	State: 31 + FCT LGA: 179

Year to date (week 1 – 13)

Suspected cases		Confirmed cases		Deaths		CFR	
2023	2024	2023	2024	2023	2024	2023	2024
8681	9031	818	1249	0	55	0%	0.6%

Figure 9: Number of suspected and confirmed cases of Measles, Nigeria, weeks 1 – 13, 2024.

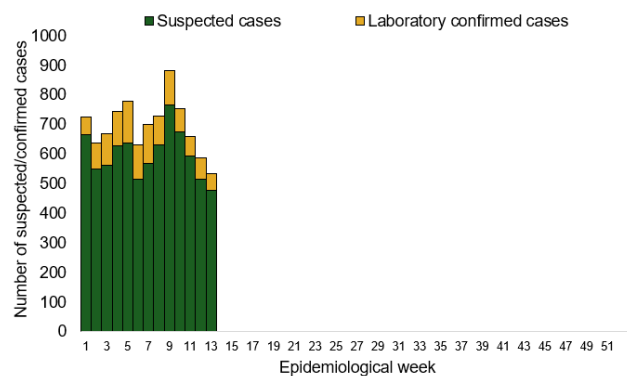
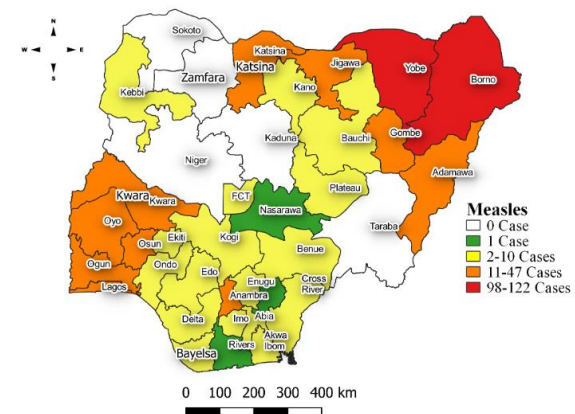


Figure 10: Location of suspected cases of Measles by State, Nigeria, week 13, 2024



Key points

- There were 535 suspected cases of Measles reported from 179 LGAs in 31 states and FCT. There were 57 laboratory confirmed cases and no deaths were recorded.

Actions

To date

- National Measles TWG is closely monitoring measles surveillance data and providing feedback to relevant agencies and development partners.

Mpox

Week 13

Suspected cases	Confirmed cases	Deaths	Number of States and LGAs affected
55	6	0	State: 18 LGA: 34

Year to date (week 1 – 13)

Suspected cases		Confirmed cases		Deaths		CFR	
2023	2024	2023	2024	2023	2024	2023	2024
521	343	70	18	2	0	0.4%	0%

Figure 11: Number of suspected and confirmed cases of Mpox, Nigeria, weeks 1 – 13, 2024.

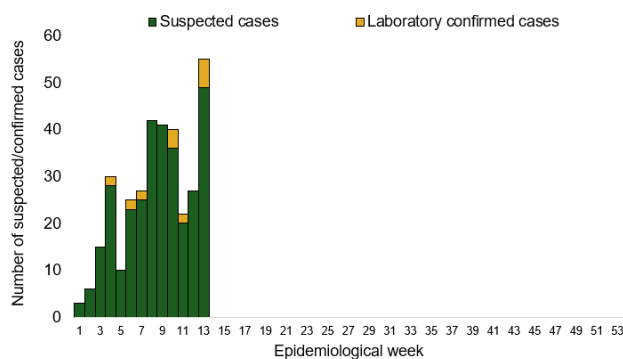
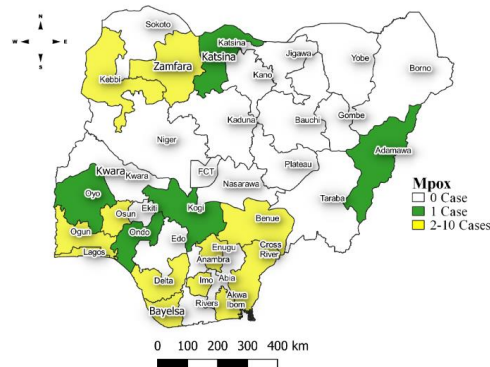


Figure 12: Location of suspected cases of Mpox by State, Nigeria, week 13, 2024



Key points

- There were 55 suspected cases of Mpox reported from 34 LGAs in 18 states. There were six laboratory confirmed cases and no death was recorded.

Actions To date

- National Monkeypox Technical Working Group (TWG) is monitoring activities in all states.

Acute Flaccid Paralysis (AFP)

Week 13

Suspected cases	Confirmed cases	Deaths	Number of States and LGAs affected
129	0	0	State: 30 + FCT LGA: 100

Year to date (week 1 – 13)

Suspected cases		Confirmed cases		Deaths		CFR	
2023	2024	2023	2024	2023	2024	2023	2024
1869	2149	0	0	0	0	0%	0%

Figure 13: Number of suspected and confirmed cases of AFP, Nigeria, weeks 1 – 13, 2023

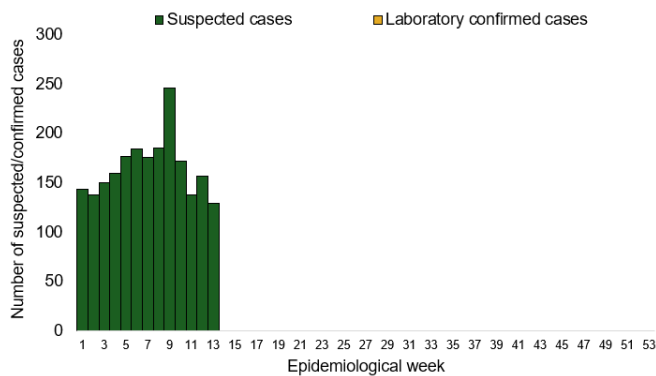
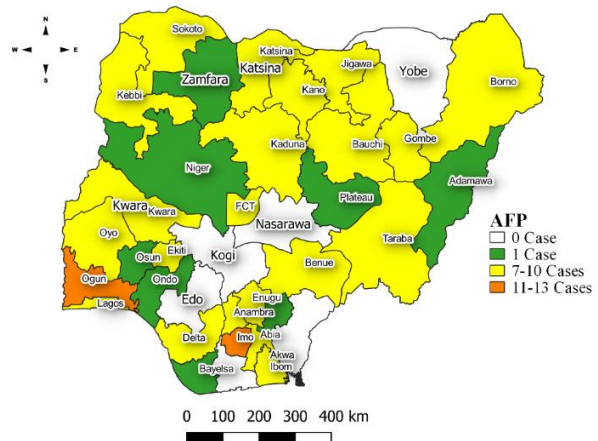


Figure 14: Location of suspected cases of AFP by State, Nigeria, week 13, 2024



Key points

- There were 129 suspected cases of AFP reported from 100 LGAs in 30 states and FCT. There was no laboratory confirmed case and no death was recorded.

National Influenza Sentinel Surveillance

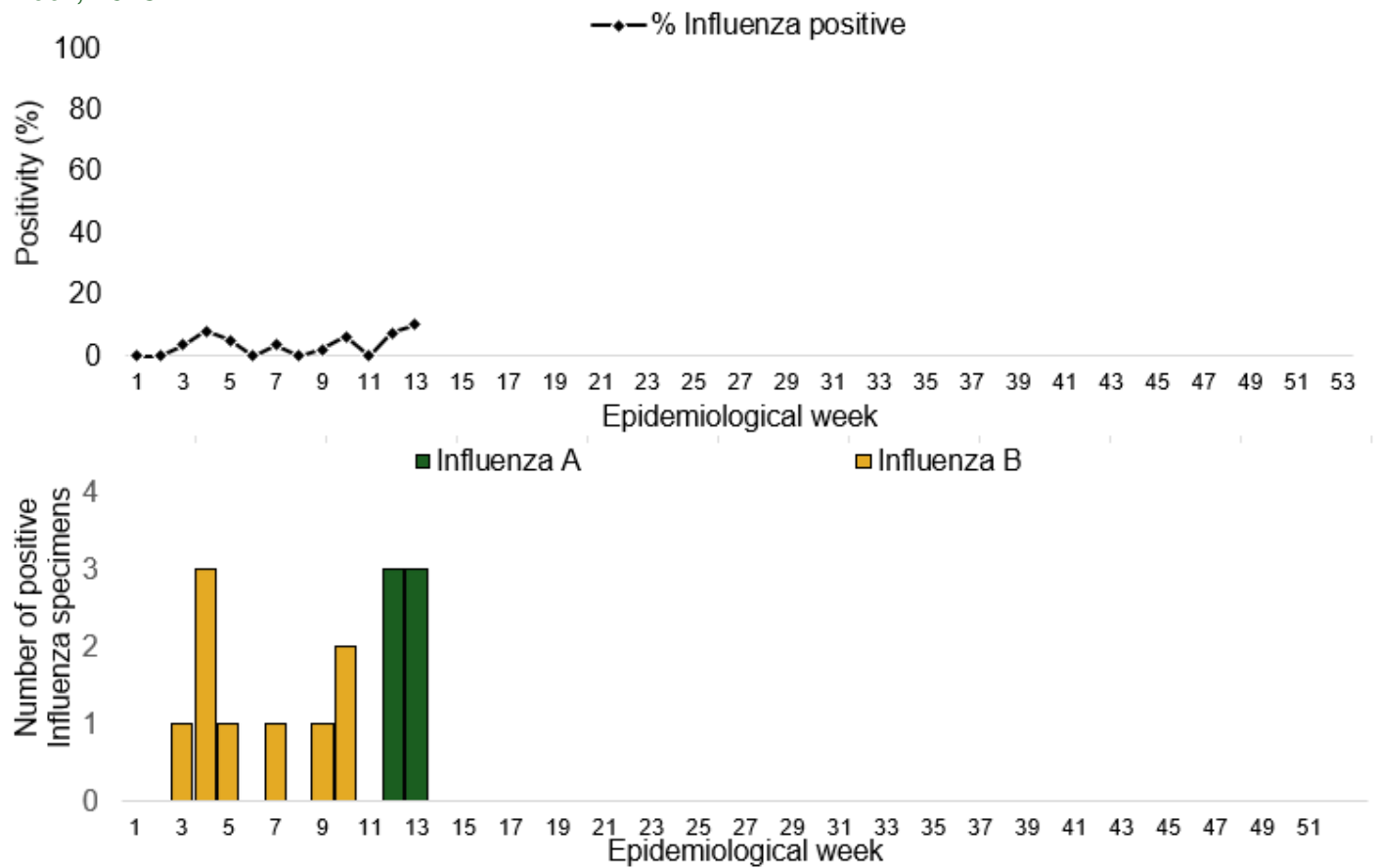
Week 13

Suspected Cases	Confirmed Cases	Confirmed Case by type	
		Influenza A	Influenza B
29	3	3	0

Year to date (week 1 – 13)

Suspected cases	Total Confirmed Cases	Confirmed cases by type	
		Influenza A	Influenza B
351	15	6	9

Figure 15: Number of influenza positive specimens by type and percentage positive by epidemiological week, 2023.



Coronavirus Disease (COVID-19)

Week 13

Suspected cases	Confirmed cases	Deaths	Number of States and LGAs affected
25	25	0	State: 5 + FCT LGA: 11

Year to date (Week 1- 13)

Suspected cases		Confirmed cases		Deaths		CFR	
2023	2024	2023	2024	2023	2024	2023	2024
366	735	366	735	1	1	0.3%	0.1%

Figure 16: Epidemic curve of confirmed cases of COVID-19, Nigeria, week 1 - 13, 2024

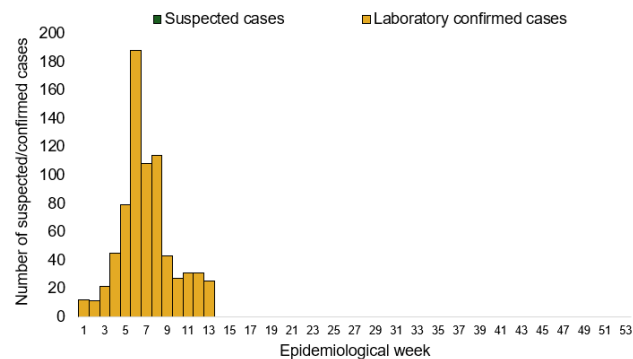
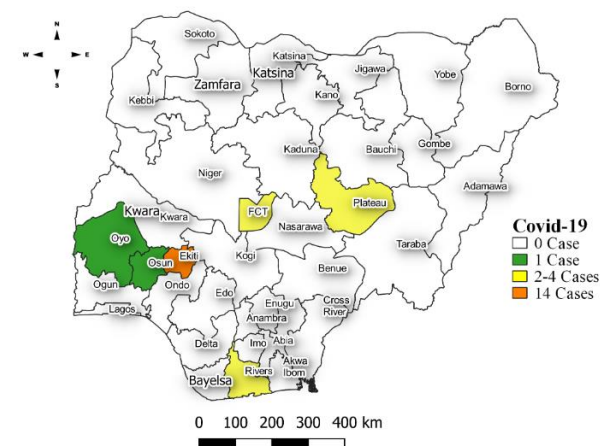


Figure 17: Location of confirmed cases of COVID-19 by State, Nigeria, as at week 13, 2024



Key points

- There were 25 suspected cases of Covid 19 reported from 11 LGAs in five states and FCT. There were 25 confirmed cases and no death was recorded

Actions

To date:

- Multi-sectoral Public Health Emergency Operation Centres (PHEOC) activated at the National and affected States

Diphtheria

Week 13

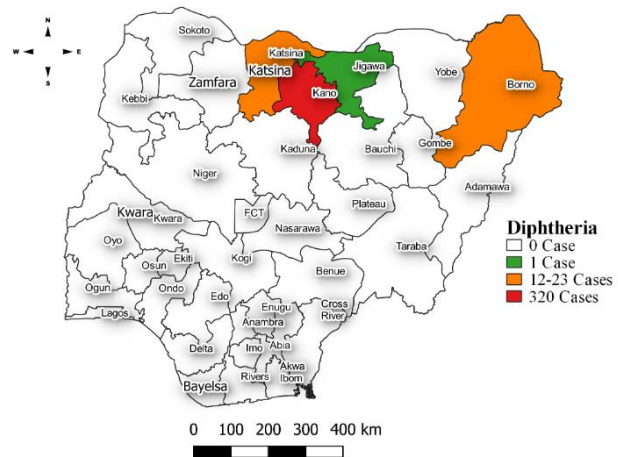
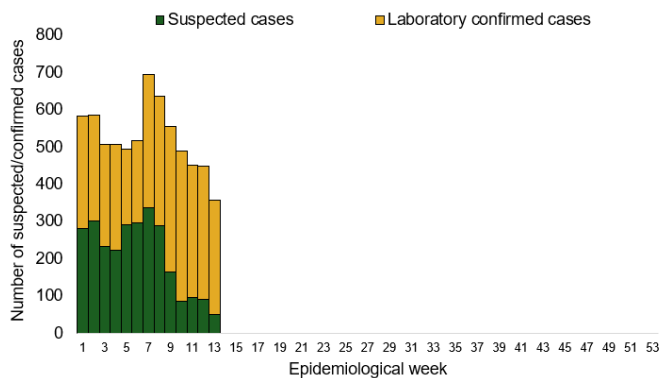
Suspected cases	Confirmed cases	Deaths	Number of States and LGAs affected
356	306	6	State: 4 LGA: 24

Year to date (week 1 – 13)

Suspected cases		Confirmed cases		Deaths		CFR	
2023	2024	2023	2024	2023	2024	2023	2024
1513	6810	837	4080	97	74	6.4%	1.1%

Figure 18: Number of suspected and confirmed cases of Diphtheria, Nigeria, weeks 1 – 13, 2024

Figure 19: Location of suspected cases of Diphtheria by State, Nigeria, week 13, 2024



Key points

- There were 356 suspected cases of Diphtheria reported from 24 LGAs in four states. There were 306 confirmed cases and six deaths were recorded.

Actions To date

- National Diphtheria Technical Working Group (TWG) is monitoring activities in all states.
- Harmonisation of surveillance and laboratory data from across states and laboratories.
- Provision of off-site surveillance support to affected States.

Event Based Surveillance (EBS)

Week 13

Key points

For the reporting week 13

- 160 Calls were successfully routed to agents and answered
- 5 calls not routed to agents (Failed call)
- 165 total number of calls (successful and failed)
- 0 number of SMS received
- 0 WhatsApp/live chat messages received
- The percentage of failed to total inbound calls 3.0%
- 0 signal picked

For week 1 – 13

- 160 Calls were successfully routed to agents and answered
- 5 calls not routed to agents (Failed call)
- 165 total number of calls (successful and failed)
- 0 number of SMS received
- 0 WhatsApp/live chat messages received
- The percentage of failed to total inbound calls 3.0%
- 0 signal picked

Categories of Calls

- General inquiries 128
- Hoax call and others 18
- Report of health conditions 0
- Inquiry on Lassa fever 5
- Inquiry on malaria vaccine 0
- Health Declaration form-related queries 0
- Inquiries on Diphtheria symptoms, treatment, and Vaccine 8
- Inquiries on yellow fever vaccine 3
- Inquiries on Hepatitis 3
- Inquiries on Lassa fever vaccine 0
- Covid19 vaccination inquiries 5

Figure 20: Number of successful and failed calls, weeks 1 – 13, 2024

