



NIGERIA CENTRE FOR DISEASE CONTROL AND PREVENTION

Nigeria Centre for Disease Control and Prevention

Protecting the health of Nigerians

Weekly Epidemiological Report

Week 12: 18th – 24th March 2024

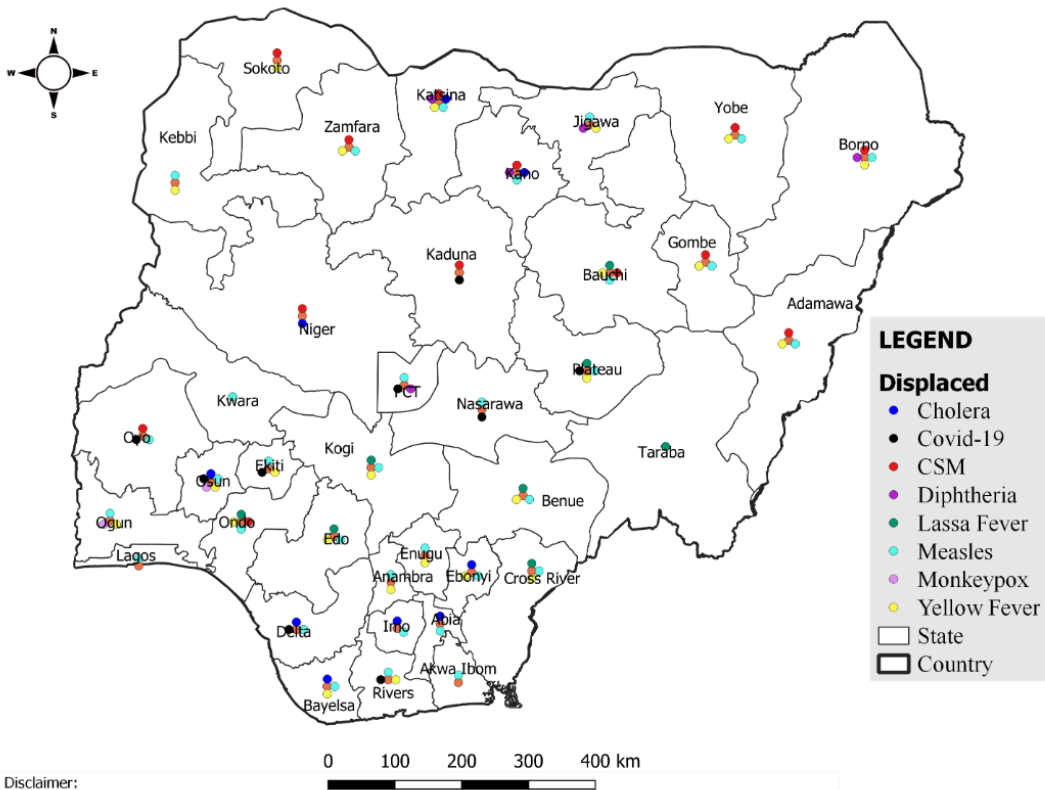
Summary of Incidents

Ongoing incidents

2

Ongoing incidents are defined as confirmed cases where a national EOC or equivalent has been activated (Lassa Fever and Diphtheria)

Other incidents are those with confirmed cases for which EOC is not activated



Summary

Week 12: 18th – 24th March 2024

Lassa Fever ^{1,2}	Cerebrospinal Meningitis (CSM) ^{1,4}	Yellow Fever ^{1,4}
303 Suspected case(s)	163 Suspected case(s)	58 Suspected case(s)
25 Confirmed case(s)	5 Confirmed case(s)	0 Confirmed case(s)
6 Death(s)	5 Death(s)	0 Death(s)
Cholera ^{1,4}	Measles ^{1,4}	Mpox ^{1,4}
112 Suspected case(s)	586 Suspected case(s)	27 Suspected case(s)
0 Confirmed case(s)	72 Confirmed case(s)	0 Confirmed case(s)
1 Death(s)	4 Death(s)	0 Death(s)
Acute Flaccid Paralysis (AFP) ^{1,4}	National Sentinel influenza surveillance ⁵	Coronavirus Disease ^{1,}
156 Suspected case(s)	40 Suspected case(s)	31 Suspected case(s)
0 Confirmed case(s)	3 Confirmed case(s)	31 Confirmed case(s)
0		0 Death(s)
Diphtheria ^{1,4}		
448 Suspected case(s)		
357 Confirmed case(s)		
1 Death(s)		

- Information for this disease was retrieved from the Technical Working Group and Situation Reports
- Case Fatality Rate (CFR) for this disease is reported for confirmed cases only.
- CFR for this disease is reported for total cases i.e. suspected + confirmed.
- Information for sentinel influenza was retrieved from the laboratory.

Lassa Fever

Week 12

Suspected cases	Confirmed cases	Deaths	Number of States and LGAs affected
303	25	6	State: 25 + FCT LGA: 28

Year to date (week 1 – 12)

Suspected cases		Confirmed cases		Deaths		CFR	
2023	2024	2023	2024	2023	2024	2023	2024
4108	5029	823	791	144	149	17.5%	18.8%

Figure 1: Number of suspected and confirmed cases of Lassa Fever, Nigeria, Weeks 1 – 12, 2024

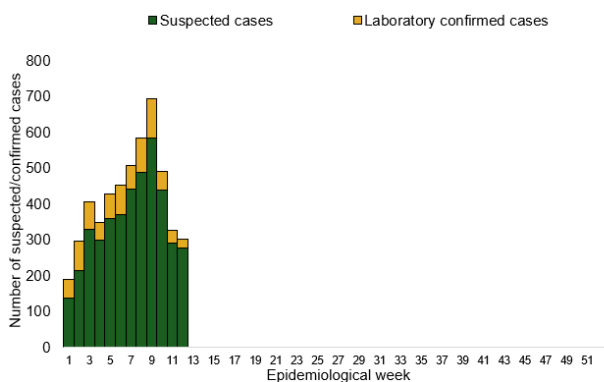
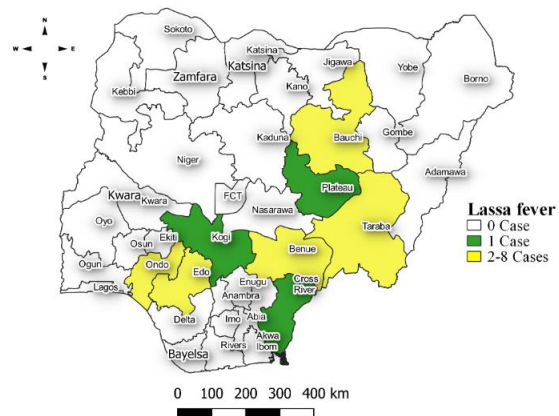


Figure 2: Location of **confirmed** cases of Lassa Fever by State, Nigeria, week 12, 2024



Key points

- There were 303 suspected cases of Lassa Fever reported from 28 LGAs in 25 states and FCT. There were 25 laboratory confirmed cases and six deaths were recorded.

Actions

To date:

- National Lassa fever multi-partner, multi-sectoral Technical Working Group (TWG) continues to coordinate the response activities at all levels.
- Jigawa activated IMS for Lassa fever EOC

Cerebrospinal Meningitis (CSM)

Week 12

Suspected cases	Confirmed cases	Deaths	Number of States and LGAs affected
163	5	5	State: 13 LGA: 39

Year to date (week 1 – 12)

Suspected cases		Confirmed cases		Deaths		CFR	
2023	2024	2023	2024	2023	2024	2023	2024
833	1907	62	47	45	110	5.4%	5.8%

Figure 3: Number of suspected and confirmed cases of CSM, Nigeria, weeks 1 – 12, 2024

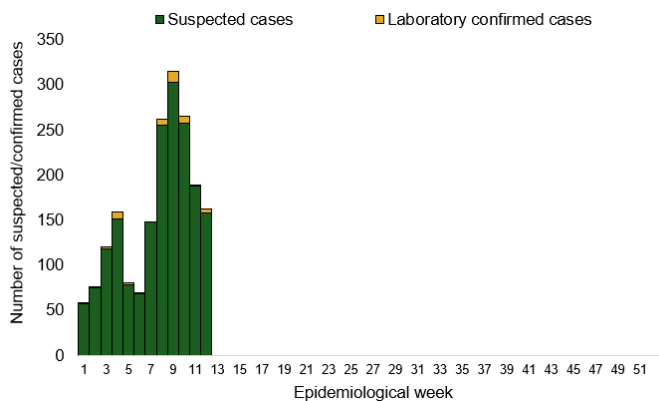
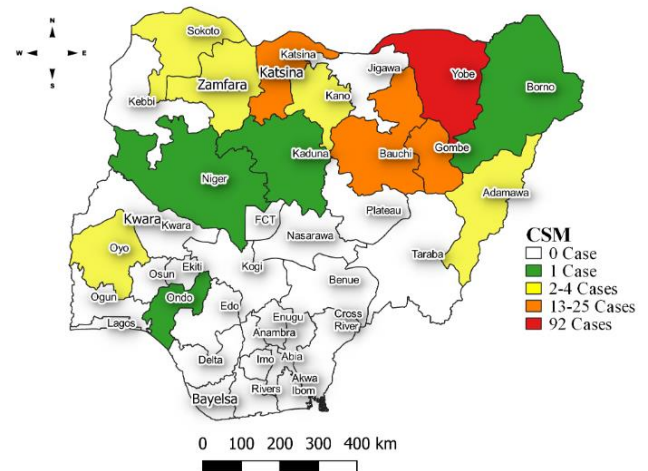


Figure 4: Location of suspected cases of CSM by State, Nigeria, week 12, 2024



Key points

- There were 163 suspected cases of Cerebrospinal meningitis (CSM) reported from 39 LGAs in 13 states. There were five laboratory confirmed cases and five deaths were reported.

Actions

To date:

- National CSM TWG meets weekly to review reports from states and plan appropriately.

Yellow Fever

Week 12

Suspected cases	Confirmed cases	Deaths	Number of States and LGAs affected
58	0	0	State: 25 LGA: 47

Year to date (week 1 – 12)

Suspected cases		Confirmed cases		Deaths		CFR	
2023	2024	2023	2024	2023	2024	2023	2024
655	755	3	1	3	1	0.4%	0.1%

Figure 5: Number of suspected and confirmed cases of Yellow Fever, Nigeria, weeks 1 – 12, 2024

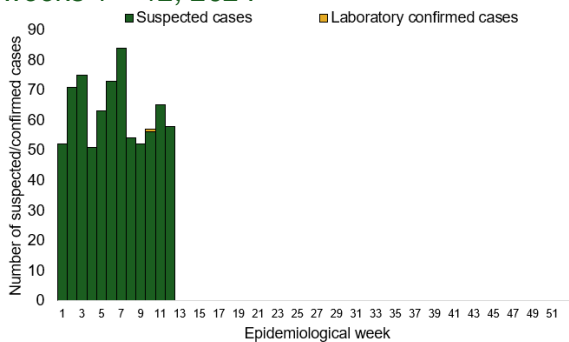
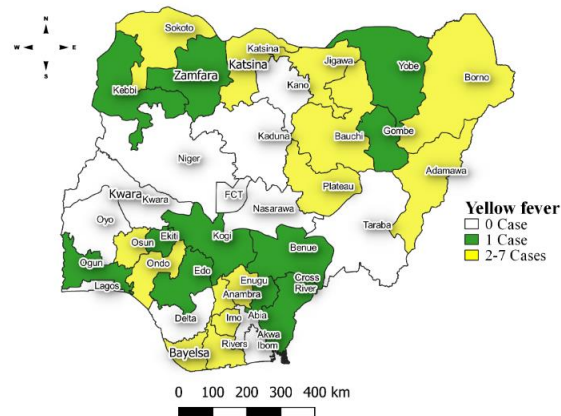


Figure 6: Location of suspected cases of Yellow Fever by States, Nigeria, week 12, 2024



Key points

- There were 58 suspected cases of Yellow Fever (YF) reported from 47 LGAs in 25 states. There was no laboratory confirmed case and no death was recorded.

Actions

To date:

- National YF multi-partner Technical Working Group (TWG) continues to coordinate activities across states.
- Harmonizing surveillance and laboratory data
- Following up with the state surveillance teams for early reporting of cases
- Coordination of yellow fever sample management and transportation from all states to the regional reference laboratories
- Regular testing of yellow fever samples in all the testing laboratories

Cholera

Week 12

Suspected cases	Confirmed cases	Deaths	Number of States and LGAs affected
112	0	1	State: 9 LGA: 16

Year to date (week 1 – 12)

Suspected cases		Confirmed cases		Deaths		CFR	
2023	2024	2023	2024	2023	2024	2023	2024
1927	982	28	3	53	18	2.7%	1.8%

Figure 7: Number of suspected and confirmed cases of Cholera, Nigeria, weeks 1 – 12, 2024

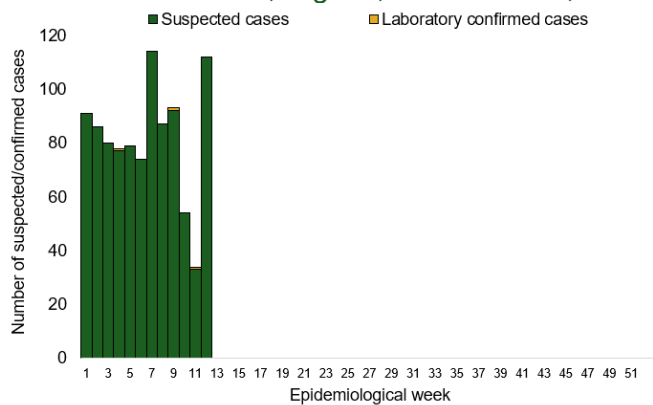
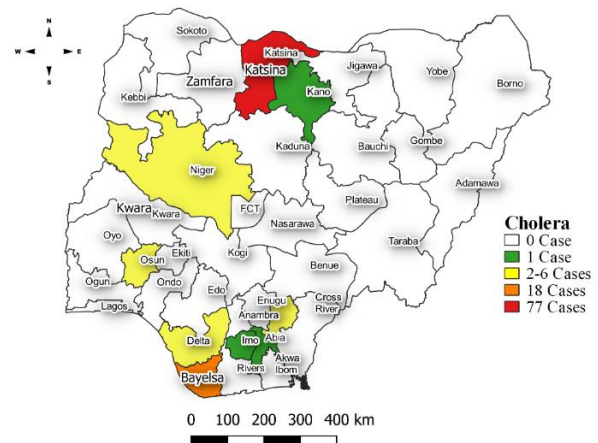


Figure 8: Location of suspected cases of Cholera by State, Nigeria, week 12, 2024



Key points

- There were 112 suspected cases of Cholera reported from 16 LGAs in nine states. There was no laboratory confirmed case and one death was recorded.

Actions

To date

- National Cholera Multi-Sectoral Technical Working Group (TWG) is monitoring all states and supporting affected states.

Measles

Week 12

Suspected cases	Confirmed cases	Deaths	Number of States and LGAs affected
586	72	4	State: 32 + FCT LGA: 216

Year to date (week 1 – 12)

Suspected cases		Confirmed cases		Deaths		CFR	
2023	2024	2023	2024	2023	2024	2023	2024
7961	8496	765	1192	0	55	0%	0.6%

Figure 9: Number of suspected and confirmed cases of Measles, Nigeria, weeks 1 – 12, 2024.

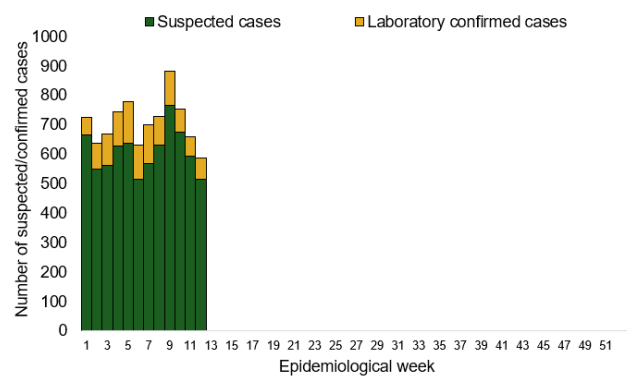
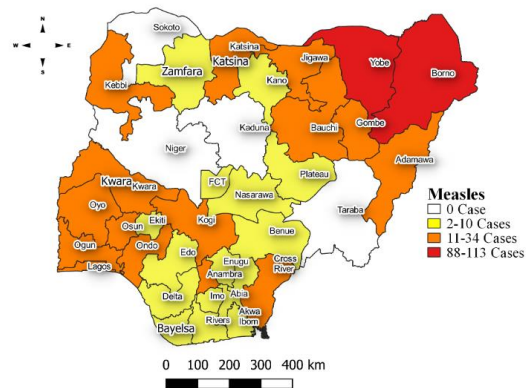


Figure 10: Location of suspected cases of Measles by State, Nigeria, week 12, 2024



Key points

- There were 586 suspected cases of Measles reported from 216 LGAs in 32 states and FCT. There were 72 laboratory confirmed cases and four deaths were recorded.

Actions

To date

- National Measles TWG is closely monitoring measles surveillance data and providing feedback to relevant agencies and development partners.

Mpox

Week 12

Suspected cases	Confirmed cases	Deaths	Number of States and LGAs affected
27	0	0	State: 10 + FCT LGA: 13

Year to date (week 1 – 12)

Suspected cases		Confirmed cases		Deaths		CFR	
2023	2024	2023	2024	2023	2024	2023	2024
492	288	66	12	2	0	0.4%	0%

Figure 11: Number of suspected and confirmed cases of Mpox, Nigeria, weeks 1 – 12, 2024.

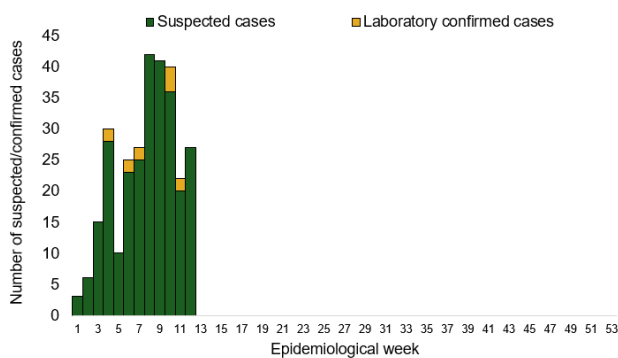
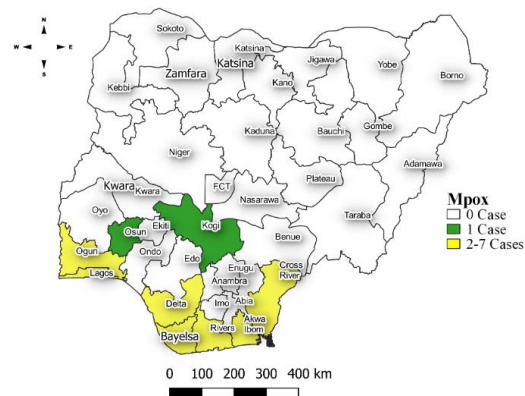


Figure 12: Location of suspected cases of Mpox by State, Nigeria, week 12, 2024



Key points

- There were 27 suspected cases of Mpox reported from 13 LGAs in 10 states and FCT. There was no laboratory confirmed case and no death was recorded.

Actions To date

- National Monkeypox Technical Working Group (TWG) is monitoring activities in all states.

Acute Flaccid Paralysis (AFP)

Week 12

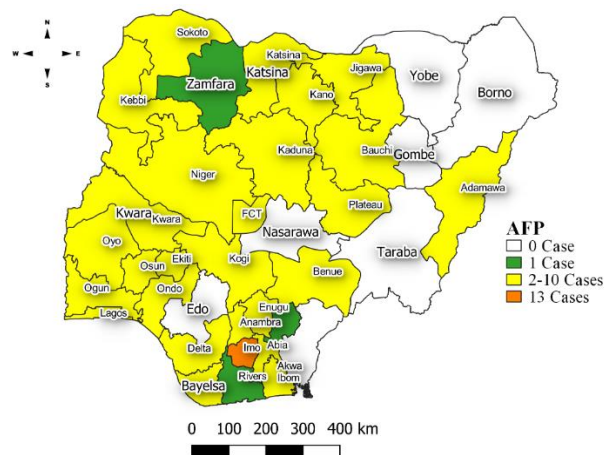
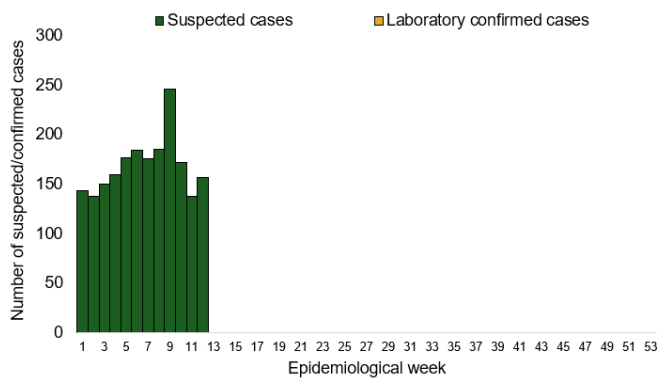
Suspected cases	Confirmed cases	Deaths	Number of States and LGAs affected
156	0	0	State: 30 + FCT LGA: 119

Year to date (week 1 – 12)

Suspected cases		Confirmed cases		Deaths		CFR	
2023	2024	2023	2024	2023	2024	2023	2024
1741	2020	0	0	0	0	0%	0%

Figure 13: Number of suspected and confirmed cases of AFP, Nigeria, weeks 1 – 12, 2023

Figure 14: Location of suspected cases of AFP by State, Nigeria, week 12, 2024



Key points

- There were 156 suspected cases of AFP reported from 119 LGAs in 30 states and FCT. There was no laboratory confirmed case and no death was recorded.

National Influenza Sentinel Surveillance

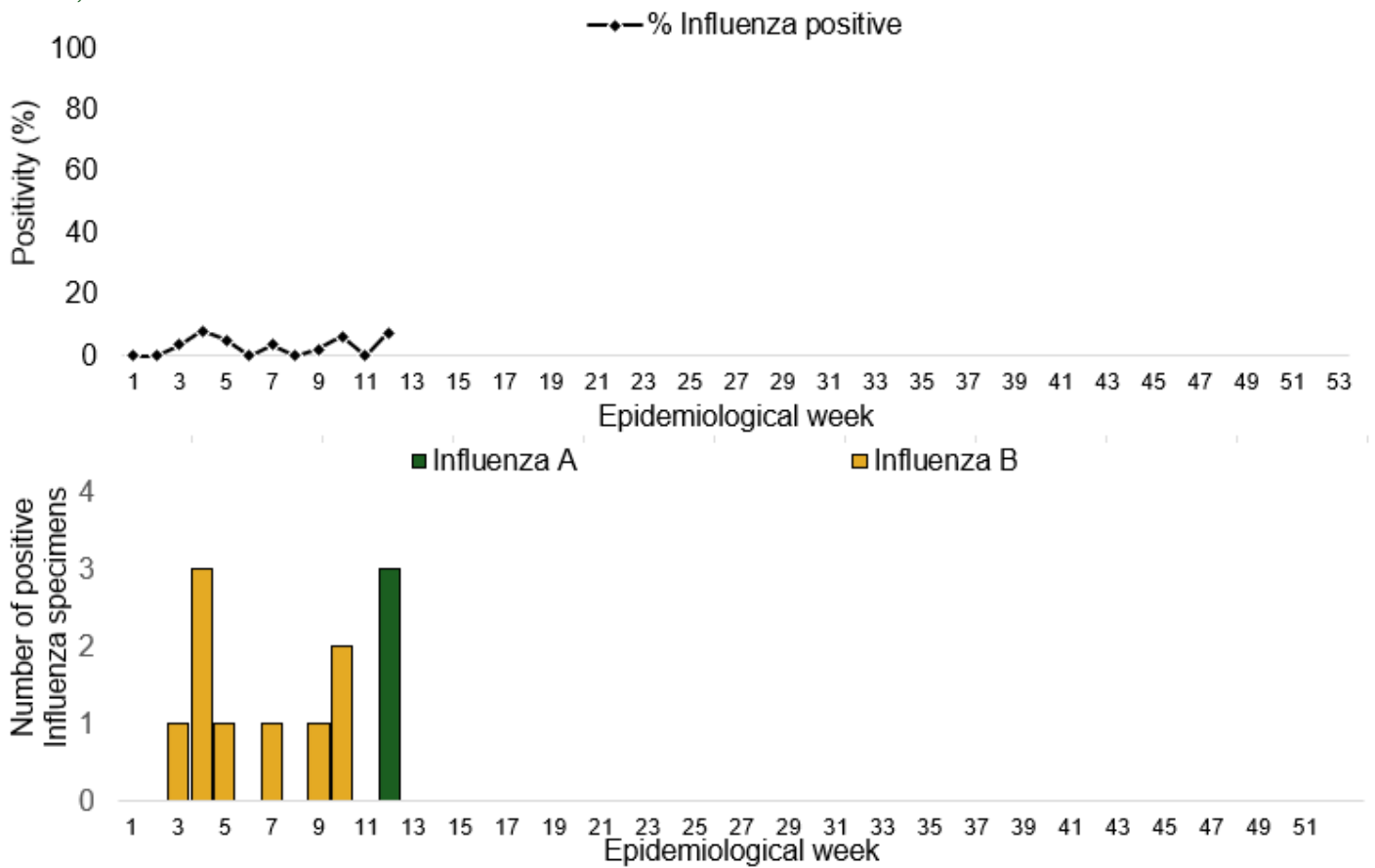
Week 12

Suspected Cases	Confirmed Cases	Confirmed Case by type	
		Influenza A	Influenza B
40	3	3	0

Year to date (week 1 – 12)

Suspected cases	Total Confirmed Cases	Confirmed cases by type	
		Influenza A	Influenza B
322	12	3	9

Figure 15: Number of influenza positive specimens by type and percentage positive by epidemiological week, 2023.



Coronavirus Disease (COVID-19)

Week 12

Suspected cases	Confirmed cases	Deaths	Number of States and LGAs affected
31	31	0	State: 8 + FCT LGA: 17

Year to date (Week 1- 12)

Suspected cases		Confirmed cases		Deaths		CFR	
2023	2024	2023	2024	2023	2024	2023	2024
342	710	342	710	1	1	0.3%	0.1%

Figure 16: Epidemic curve of confirmed cases of COVID-19, Nigeria, week 1 - 12, 2024

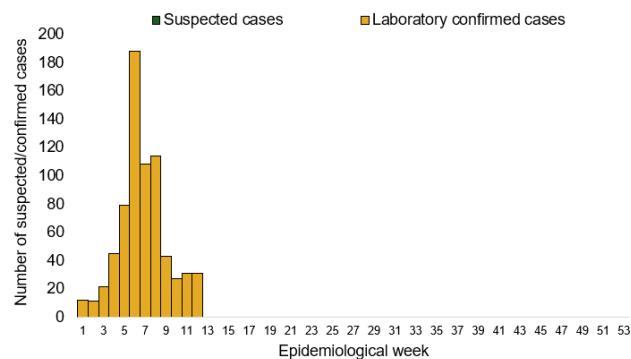
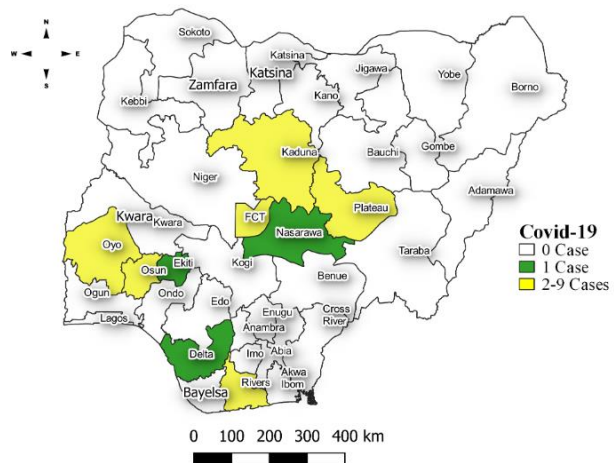


Figure 17: Location of confirmed cases of COVID-19 by State, Nigeria, as at week 12, 2024



Key points

- There were 31 suspected cases of Covid 19 reported from 17 LGAs in eight states and FCT. There were 31 confirmed cases and no death recorded

Actions

To date:

- Multi-sectoral Public Health Emergency Operation Centres (PHEOC) activated at the National and affected States

Diphtheria

Week 12

Suspected cases	Confirmed cases	Deaths	Number of States and LGAs affected
448	357	1	State: 4 + FCT LGA: 31

Year to date (week 1 – 12)

Suspected cases		Confirmed cases		Deaths		CFR	
2023	2024	2023	2024	2023	2024	2023	2024
1426	6454	799	3774	96	68	6.7%	1.1%

Figure 18: Number of suspected and confirmed cases of Diphtheria, Nigeria, weeks 1 – 12, 2024

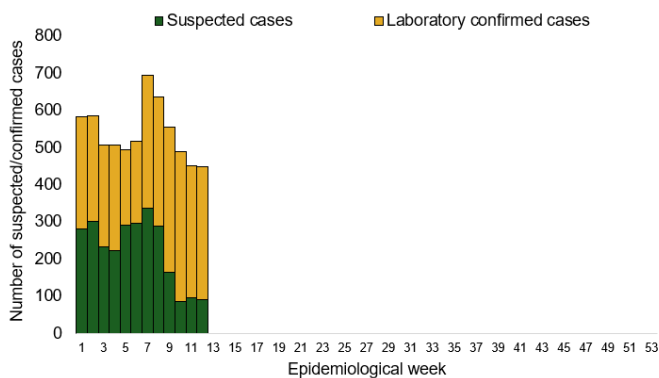
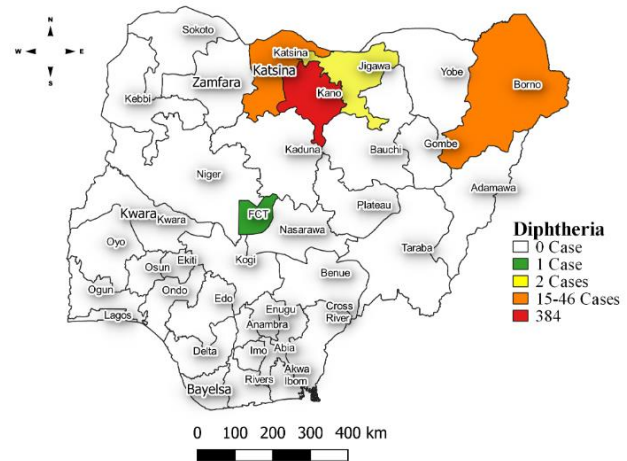


Figure 19: Location of suspected cases of Diphtheria by State, Nigeria, week 12, 2024



Key points

- There were 448 suspected cases of Diphtheria reported from 31 LGAs in four states and FCT. There were 357 confirmed cases and one death was recorded.

Actions

To date

- National Diphtheria Technical Working Group (TWG) is monitoring activities in all states.

Planned:

- Harmonisation of surveillance and laboratory data from across states and laboratories.
- Provision of off-site surveillance support to affected States.

Event Based Surveillance (EBS)

Week 12

Key points

For the reporting week 12

- 157 Calls were successfully routed to agents and answered
- 14 calls not routed to agents (Failed call)
- 171 total number of calls (successful and failed)
- 0 number of SMS received • 0 WhatsApp/live chat messages received
- Percentage of failed to total inbound calls 4.7%
- 2 signals picked and escalated to the States
 - Diphtheria kills four children in kano: This was a rumour and there is no active case of diphtheria in Minjibir LGA of Kano State. However, Kano State is still responding to diphtheria disease
 - A suspected a case of monkeypox was picked through media scanning. The case was observed at the health facility, sample was collected and sent to the laboratory. The result returned as negative

For week 1 – 12

- 1,232 calls were successfully routed to agents and answered
- 75 calls not routed to agents (Failed call)
- 1,307 total inbound calls recorded
- Percentage of failed to total inbound calls: 8.2%
- 21 Signals picked and escalated

Categories of Calls

- General inquiries 119
- Hoax call and others 17
- Report of health conditions 0
- Inquiry on Lassa fever 8
- Inquiry on malaria vaccine 0
- Health Declaration form-related queries 0
- Inquiries on Diphtheria symptoms, treatment, and Vaccine 8
- Inquiries on yellow fever vaccine 2
- Inquiries on Lassa fever vaccine 0
- Covid19 vaccination inquiries 3

Figure 20: Number of successful and failed calls, weeks 1 – 12, 2024

