



NIGERIA CENTRE FOR DISEASE CONTROL AND PREVENTION

Nigeria Centre for Disease Control and Prevention

Protecting the health of Nigerians

Weekly Epidemiological Report

Week 10: 4th – 10th March 2024

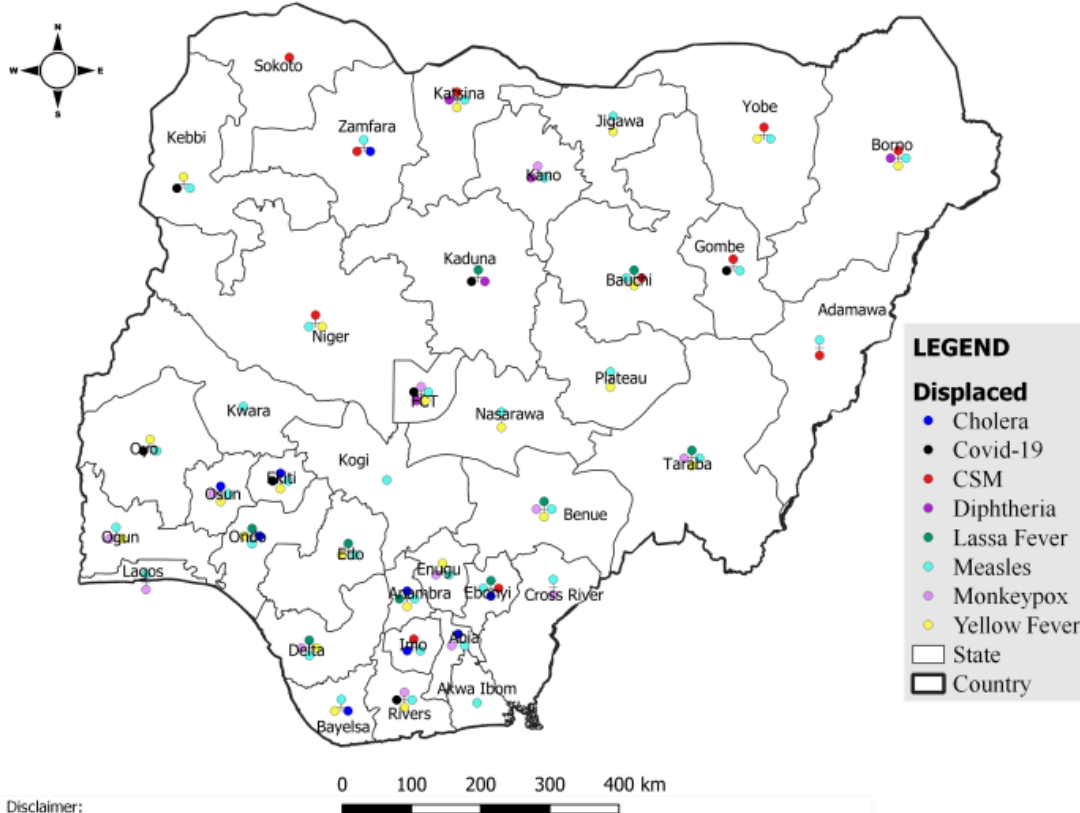
Summary of Incidents

Ongoing incidents

2

Ongoing incidents are defined as confirmed cases where a national EOC or equivalent has been activated (Lassa Fever and Diphtheria)

Other incidents are those with confirmed cases for which EOC is not activated



Summary

Week 10: 4th – 10th March 2024

Lassa Fever ^{1,2}	Cerebrospinal Meningitis (CSM) ^{1,4}	Yellow Fever ^{1,4}
490 Suspected case(s)	265 Suspected case(s)	57 Suspected case(s)
50 Confirmed case(s)	7 Confirmed case(s)	1 Confirmed case(s)
10 Death(s)	21 Death(s)	0 Death(s)
Cholera ^{1,4}	Measles ^{1,4}	Monkeypox ^{1,4}
54 Suspected case(s)	755 Suspected case(s)	40 Suspected case(s)
0 Confirmed case(s)	81 Confirmed case(s)	4 Confirmed case(s)
0 Death(s)	11 Death(s)	0 Death(s)
Acute Flaccid Paralysis (AFP) ^{1,4}	National Sentinel influenza surveillance ⁵	Coronavirus Disease ^{1,}
172 Suspected case(s)	31 Suspected case(s)	27 Suspected case(s)
0 Confirmed case(s)	2 Confirmed case(s)	27 Confirmed case(s)
0		0 Death(s)
Diphtheria ^{1,4}		
487 Suspected case(s)		
401 Confirmed case(s)		
14 Death(s)		

- Information for this disease was retrieved from the Technical Working Group and Situation Reports
- Case Fatality Rate (CFR) for this disease is reported for confirmed cases only.
- CFR for this disease is reported for total cases i.e. suspected + confirmed.
- Information for sentinel influenza was retrieved from the laboratory.

Lassa Fever

Week 10

Suspected cases	Confirmed cases	Deaths	Number of States and LGAs affected
490	50	10	State: 27 + FCT LGA: 30

Year to date (week 1 – 10)

Suspected cases		Confirmed cases		Deaths		CFR	
2023	2024	2023	2024	2023	2024	2023	2024
3560	4401	746	731	128	138	17.2%	18.9%

Figure 1: Number of suspected and confirmed cases of Lassa Fever, Nigeria, Weeks 1 – 10, 2024

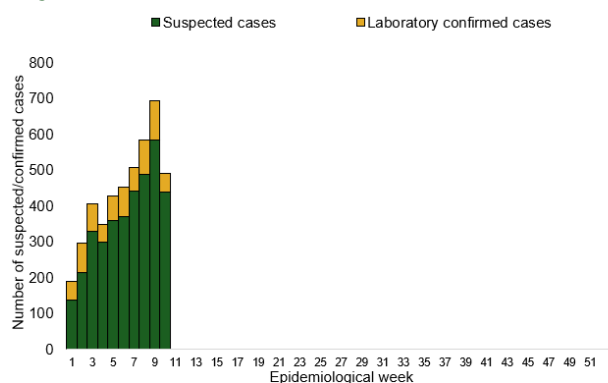
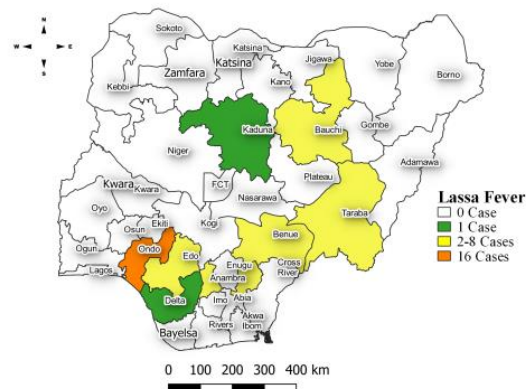


Figure 2: Location of **confirmed** cases of Lassa Fever by State, Nigeria, week 10, 2024



Key points

- There were 490 suspected cases of Lassa Fever reported from 30 LGAs in 27 states and FCT. There were 50 laboratory confirmed cases and 10 deaths were recorded.

Actions

To date:

- National Lassa fever multi-partner, multi-sectoral Technical Working Group (TWG) continues to coordinate the response activities at all levels.
- Participated in the Training of Trainers (ToT) workshop of One Health partners on rodent control and Lassa fever prevention by the FMENV in collaboration with BA-N
- Engaged in the HIV SPiCE ECHO weekly special session on Lassa fever

Cerebrospinal Meningitis (CSM)

Week 10

Suspected cases	Confirmed cases	Deaths	Number of States and LGAs affected
265	7	21	State: 11 LGA: 49

Year to date (week 1 – 10)

Suspected cases		Confirmed cases		Deaths		CFR	
2023	2024	2023	2024	2023	2024	2023	2024
608	1555	49	41	27	98	4.4%	6.3%

Figure 3: Number of suspected and confirmed cases of CSM, Nigeria, weeks 1 – 10, 2024

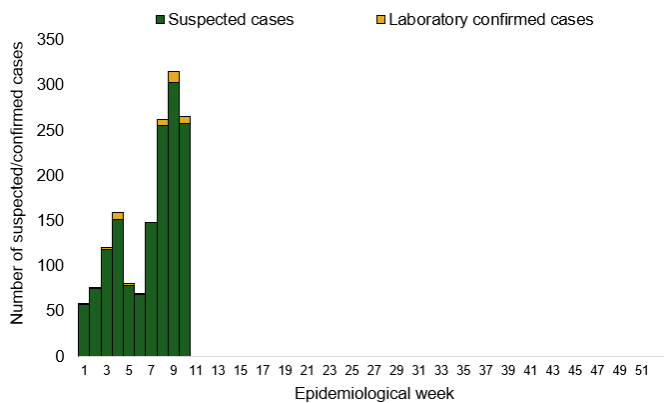
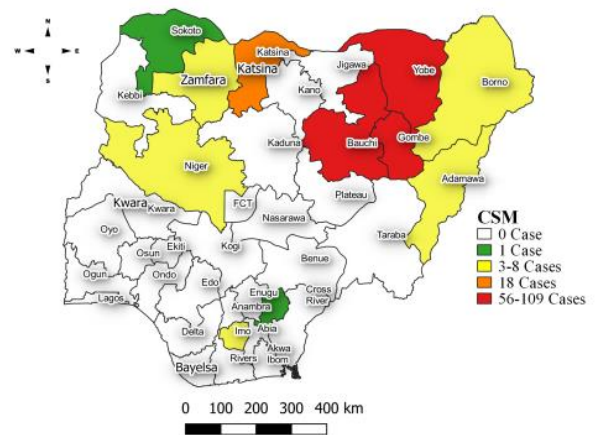


Figure 4: Location of suspected cases of CSM by State, Nigeria, week 10, 2024



Key points

- There were 265 suspected cases of Cerebrospinal meningitis (CSM) reported from 49 LGAs in 11 states. There were seven laboratory confirmed cases and 21 deaths were reported.

Actions

To date:

- National CSM TWG meets weekly to review reports from states and plan appropriately.

Yellow Fever

Week 10

Suspected cases	Confirmed cases	Deaths	Number of States and LGAs affected
57	1	0	State: 22 + FCT LGA: 49

Year to date (week 1 – 10)

Suspected cases		Confirmed cases		Deaths		CFR	
2023	2024	2023	2024	2023	2024	2023	2024
525	632	2	1	2	0	0.4%	0%

Figure 5: Number of suspected and confirmed cases of Yellow Fever, Nigeria, weeks 1 – 10, 2024

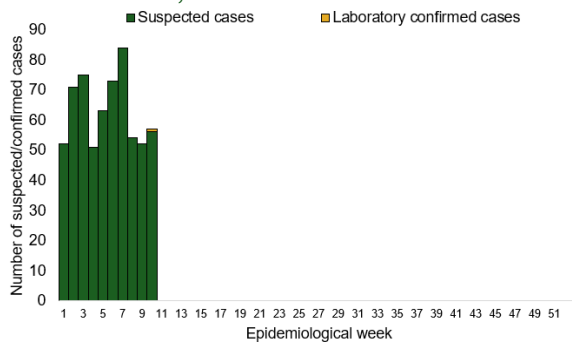
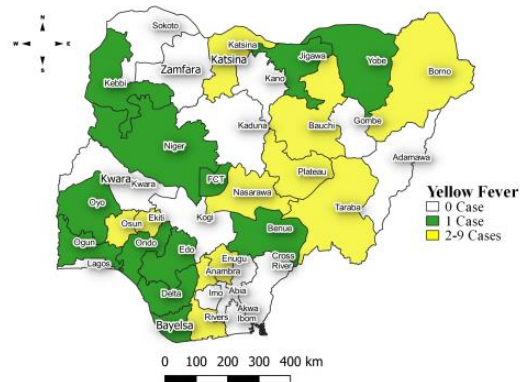


Figure 6: Location of suspected cases of Yellow Fever by States, Nigeria, week 10, 2024



Key points

- There were 57 suspected cases of Yellow Fever (YF) reported from 49 LGAs in 22 states and FCT. There was one laboratory confirmed case and no death was recorded.

Actions

To date:

- National YF multi-partner Technical Working Group (TWG) continues to coordinate activities across states.
- Harmonizing surveillance and laboratory data

Cholera

Week 10

Suspected cases	Confirmed cases	Deaths	Number of States and LGAs affected
54	0	0	State: 9 LGA: 20

Year to date (week 1 – 10)

Suspected cases		Confirmed cases		Deaths		CFR	
2023	2024	2023	2024	2023	2024	2023	2024
1764	836	25	2	52	16	2.9%	1.9%

Figure 7: Number of suspected and confirmed cases of Cholera, Nigeria, weeks 1 – 10, 2024

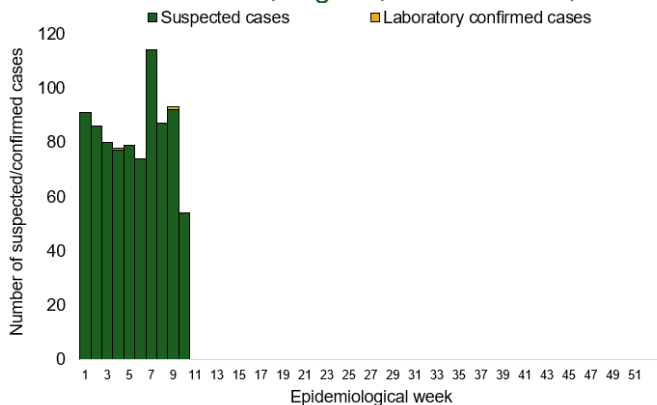
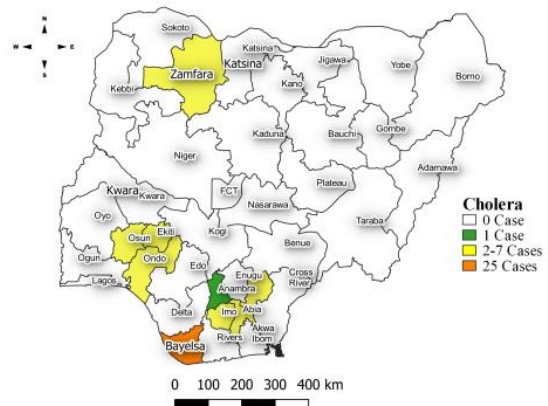


Figure 8: Location of suspected cases of Cholera by State, Nigeria, week 10, 2024



Key points

- There were 54 suspected cases of Cholera reported from 20 LGAs in nine states. There was no laboratory confirmed case and no death was recorded.

Actions

To date

- National Cholera Multi-Sectoral Technical Working Group (TWG) is monitoring all states and supporting affected states.

Measles

Week 10

Suspected cases	Confirmed cases	Deaths	Number of States and LGAs affected
755	81	11	State: 34 + FCT LGA: 251

Year to date (week 1 – 10)

Suspected cases		Confirmed cases		Deaths		CFR	
2023	2024	2023	2024	2023	2024	2023	2024
6498	7249	662	1053	0	50	0%	0.7%

Figure 9: Number of suspected and confirmed cases of Measles, Nigeria, weeks 1 – 10, 2024.

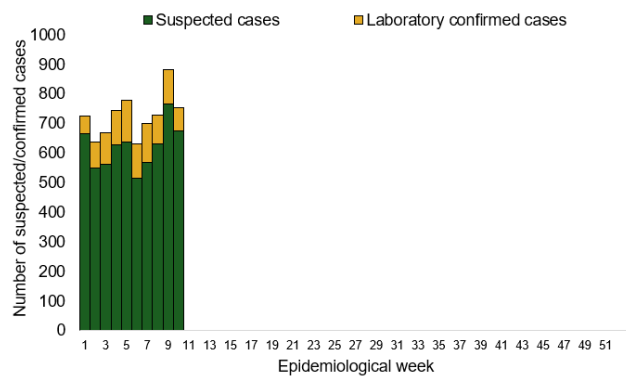
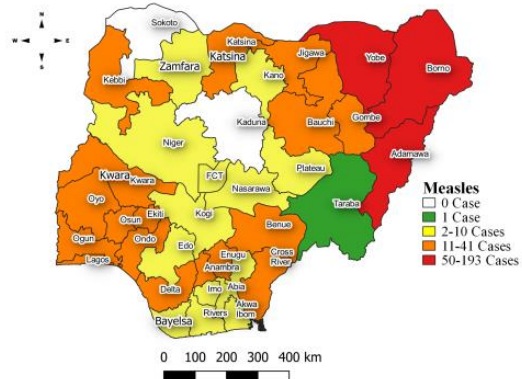


Figure 10: Location of suspected cases of Measles by State, Nigeria, week 10, 2024



Key points

- There were 755 suspected cases of Measles reported from 251 LGAs in 34 states and FCT. There were 81 laboratory confirmed cases and 11 deaths were recorded.

Actions

To date

- National Measles TWG is closely monitoring measles surveillance data and providing feedback to relevant agencies and development partners.

Monkeypox

Week 10

Suspected cases	Confirmed cases	Deaths	Number of States and LGAs affected
40	4	0	State: 11 + FCT LGA: 22

Year to date (week 1 – 10)

Suspected cases		Confirmed cases		Deaths		CFR	
2023	2024	2023	2024	2023	2024	2023	2024
433	239	57	10	2	0	0.5%	0%

Figure 11: Number of suspected and confirmed cases of Monkeypox, Nigeria, weeks 1 – 10, 2024.

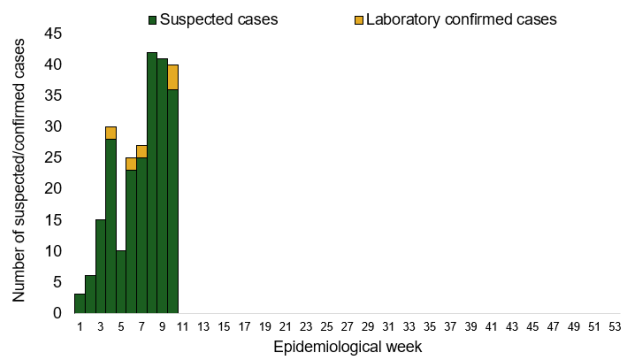
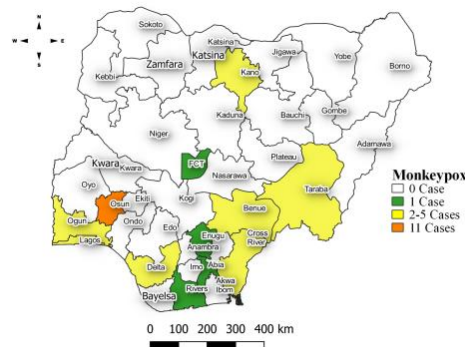


Figure 12: Location of suspected cases of Monkeypox by State, Nigeria, week 10, 2024



Key points

- There were 40 suspected cases of Monkeypox reported from 22 LGAs in 11 states and FCT. There were four laboratory confirmed cases and no death was recorded.

Actions To date

- National Monkeypox Technical Working Group (TWG) is monitoring activities in all states.

Acute Flaccid Paralysis (AFP)

Week 10

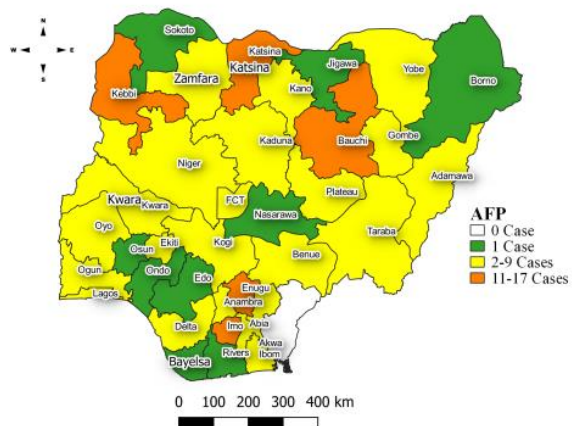
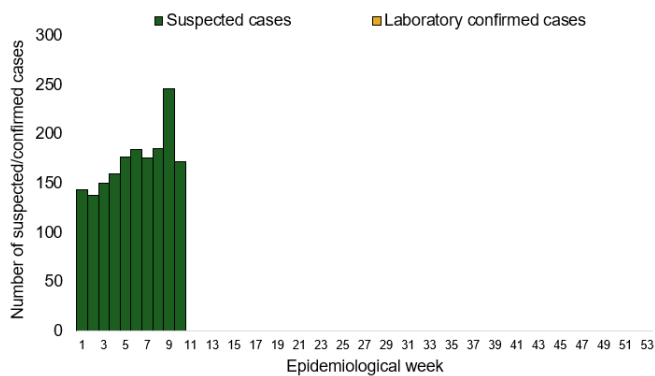
Suspected cases	Confirmed cases	Deaths	Number of States and LGAs affected
172	0	0	State: 35 + FCT LGA: 133

Year to date (week 1 – 10)

Suspected cases		Confirmed cases		Deaths		CFR	
2023	2024	2023	2024	2023	2024	2023	2024
1385	1727	0	0	0	0	0%	0%

Figure 13: Number of suspected and confirmed cases of AFP, Nigeria, weeks 1 – 10, 2023

Figure 14: Location of suspected cases of AFP by State, Nigeria, week 10, 2024



Key points

- There were 172 suspected cases of AFP reported from 133 LGAs in 35 states and FCT. There was no laboratory confirmed case and no death was recorded.

National Influenza Sentinel Surveillance

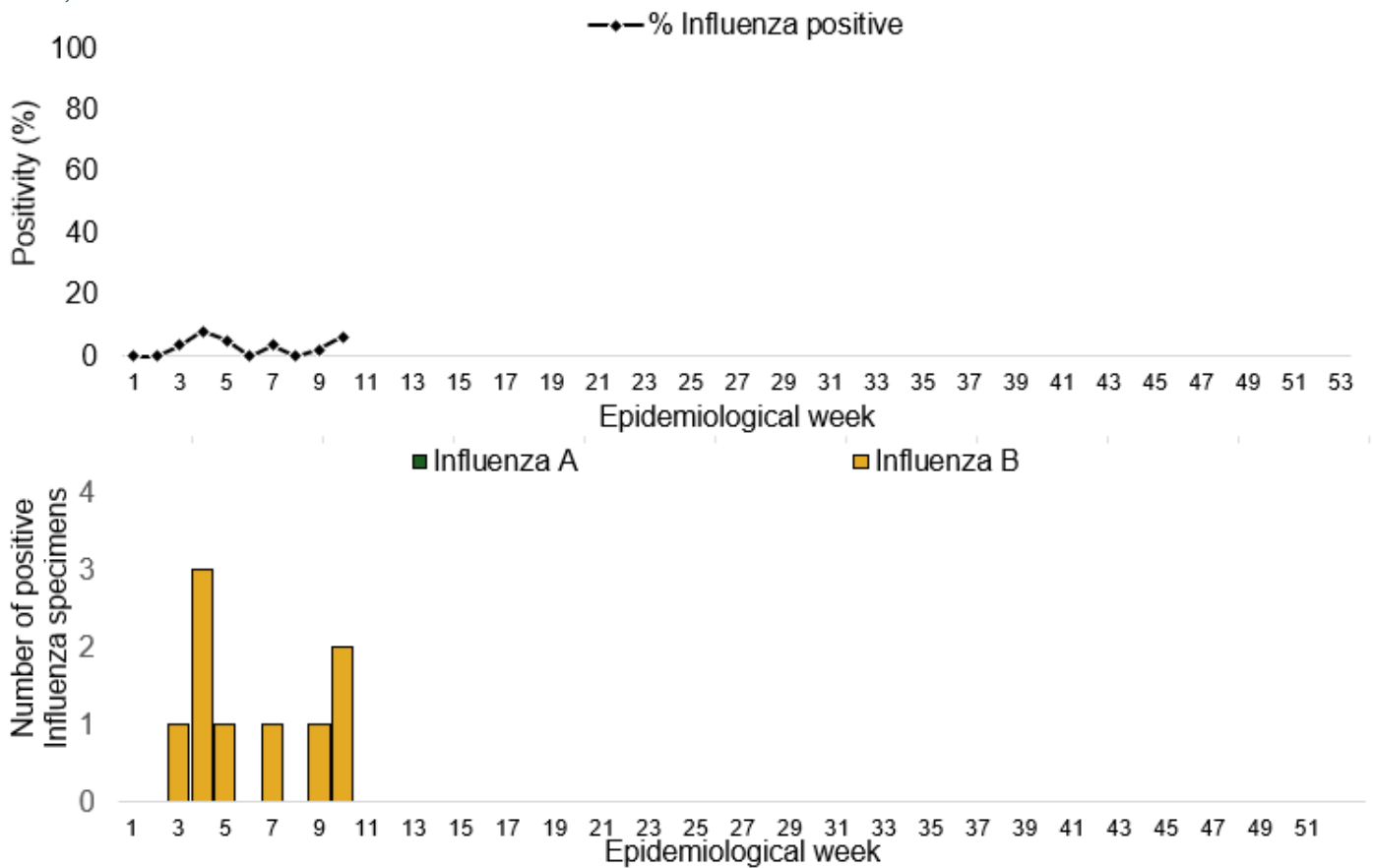
Week 10

Suspected Cases	Confirmed Cases	Confirmed Case by type	
		Influenza A	Influenza B
31	2	0	2

Year to date (week 1 – 10)

Suspected cases	Total Confirmed Cases	Confirmed cases by type	
		Influenza A	Influenza B
267	9	0	9

Figure 15: Number of influenza positive specimens by type and percentage positive by epidemiological week, 2023.



Coronavirus Disease (COVID-19)

Week 10

Suspected cases	Confirmed cases	Deaths	Number of States and LGAs affected
27	27	0	State: 6 + FCT LGA: 13

Year to date (Week 1- 10)

Suspected cases		Confirmed cases		Deaths		CFR	
2023	2024	2023	2024	2023	2024	2023	2024
290	648	290	648	1	0	0.3%	0%

Figure 16: Epidemic curve of confirmed cases of COVID-19, Nigeria, week 1 - 10, 2024

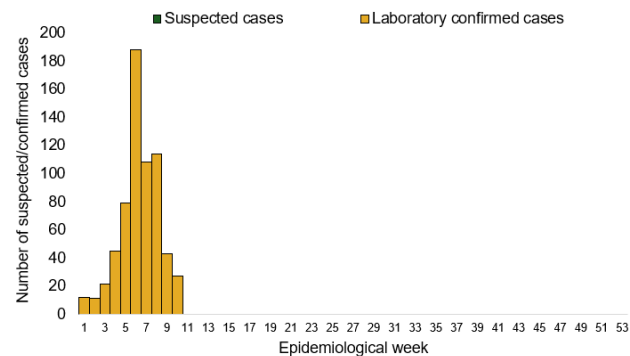
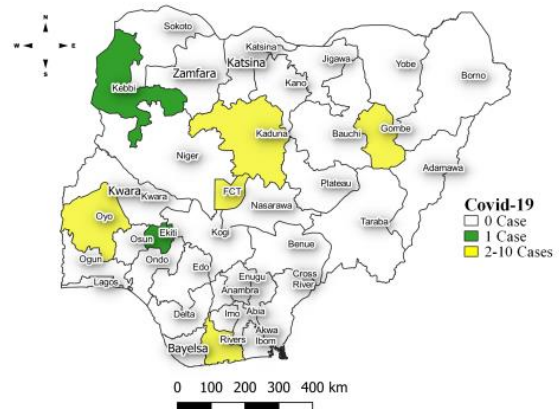


Figure 17: Location of confirmed cases of COVID-19 by State, Nigeria, as at week 10, 2024



Key points

- There were 27 suspected cases of Covid 19 reported from 13 LGAs in six states and FCT. There were 27 confirmed cases and no death recorded

Actions

To date:

- Multi-sectoral Public Health Emergency Operation Centres (PHEOC) activated at the National and affected States

Diphtheria

Week 10

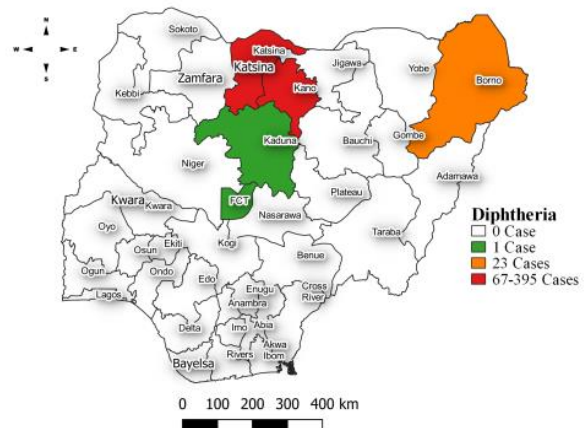
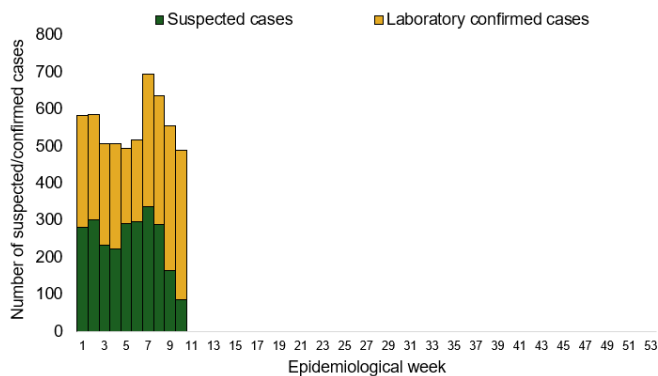
Suspected cases	Confirmed cases	Deaths	Number of States and LGAs affected
487	401	14	State: 4 + FCT LGA: 39

Year to date (week 1 – 10)

Suspected cases		Confirmed cases		Deaths		CFR	
2023	2024	2023	2024	2023	2024	2023	2024
1234	5556	698	3062	86	61	6.9%	1.1%

Figure 18: Number of suspected and confirmed cases of Diphtheria, Nigeria, weeks 1 – 10, 2024

Figure 19: Location of suspected cases of Diphtheria by State, Nigeria, week 10, 2024



Key points

- There were 487 suspected cases of Diphtheria reported from 39 LGAs in four states and FCT. There were 401 confirmed cases and 14 deaths were recorded.

Actions To date

- National Diphtheria Technical Working Group (TWG) is monitoring activities in all states.
- Harmonisation of surveillance and laboratory data from across states and laboratories.
- Provision of off-site surveillance support to affected States.

Event Based Surveillance (EBS)

Week 10

Key points

For the reporting week 10:

- 41 Calls were successfully routed to agents and answered
- 1 call not routed to agents (Failed call)
- 142 total number of calls (successful and failed)
- 0 number of SMS received
- 0 WhatsApp/live chat messages received
- Percentage of failed to total inbound calls 0.7%
- 5 signals were picked and escalated to the States and 4 turned out to be 4 true events:
 - Suspected Measles outbreak in Kano State
 - Suspected Meningitis outbreak in Jigawa State Suspected Measles Outbreak in Benue State
 - Suspected Case of Buruli Ulcer in Benue State Unknown deaths in Nafada, Gombe State debunked by the Gombe State Epidemiologist who said It was CSM cases and the State is responding

For week 1 – 10

- 991 calls were successfully routed to agents and answered
- 56 calls not routed to agents (Failed call)
- 1047 total inbound calls recorded
- Percentage of failed to total inbound calls: 5.3%
- 19 Signals picked and escalated

Categories of Calls

- General inquiries 51
- Hoax call and others 78
- Report of health conditions
- Inquiry on Lassa fever 12
- Inquiry on malaria vaccine 0
- Health Declaration form-related queries 0
- Inquiries on Diphtheria symptoms, treatment, and Vaccine 1
- Inquiries on yellow fever vaccine 1
- Inquiries on Lassa fever vaccine 0
- Covid19 vaccination inquiries 0

Figure 20: Number of successful and failed calls, weeks 1 – 10, 2024

