



Nigeria Centre for Disease Control and Prevention

Protecting the health of Nigerians

Weekly Epidemiological Report

Week 4: 22nd – 28th January 2024

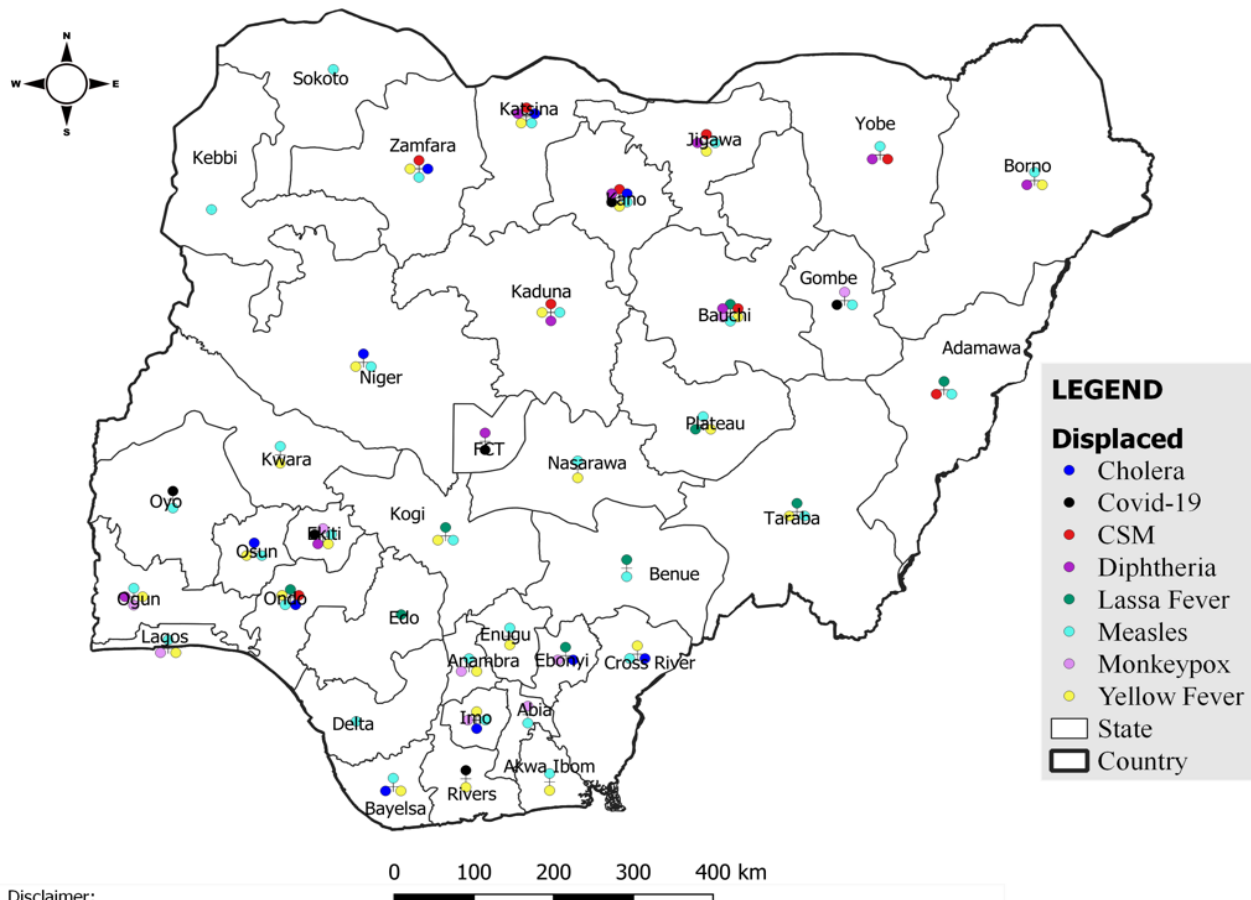
Summary of Incidents

Ongoing incidents

2

Ongoing incidents are defined as confirmed cases where a national EOC or equivalent has been activated (Lassa Fever and Diphtheria)

Other incidents are those with confirmed cases for which EOC is not activated



Summary

Week 4: 22nd – 28th January 2024

Lassa Fever ^{1,2}	Cerebrospinal Meningitis (CSM) ^{1,4}	Yellow Fever ^{1,4}
347 Suspected case(s)	159 Suspected case(s)	51 Suspected case(s)
47 Confirmed case(s)	7 Confirmed case(s)	0 Confirmed case(s)
5 Death(s)	13 Death(s)	0 Death(s)
Cholera ^{1,4}	Measles ^{1,4}	Mpox ^{1,4}
78 Suspected case(s)	744 Suspected case(s)	30 Suspected case(s)
1 Confirmed case(s)	117 Confirmed case(s)	2 Confirmed case(s)
1 Death(s)	5 Death(s)	0 Death(s)
Acute Flaccid Paralysis (AFP) ^{1,4}	National Sentinel influenza surveillance ⁵	Coronavirus Disease ^{1,}
159 Suspected case(s)	34 Suspected case(s)	45 Suspected case(s)
0 Confirmed case(s)	3 Confirmed case(s)	45 Confirmed case(s)
		0 Death(s)
Diphtheria ^{1,4}		
505 Suspected case(s)		
282 Confirmed case(s)		
5 Death(s)		

- Information for this disease was retrieved from the Technical Working Group and Situation Reports
- Case Fatality Rate (CFR) for this disease is reported for confirmed cases only.
- CFR for this disease is reported for total cases i.e. suspected + confirmed.
- Information for sentinel influenza was retrieved from the laboratory.

Lassa Fever

Week 4

Suspected cases	Confirmed cases	Deaths	Number of States and LGAs affected
347	47	5	State: 20 + FCT LGA: 22

Year to date (week 1 – 4)

Suspected cases		Confirmed cases		Deaths		CFR	
2023	2024	2023	2024	2023	2024	2023	2024
607	1239	308	258	55	48	17.9%	18.6%

Figure 1: Number of suspected and confirmed cases of Lassa Fever, Nigeria, Weeks 1 – 4, 2024

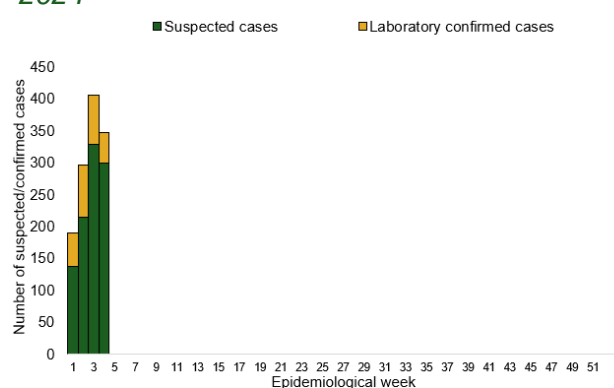
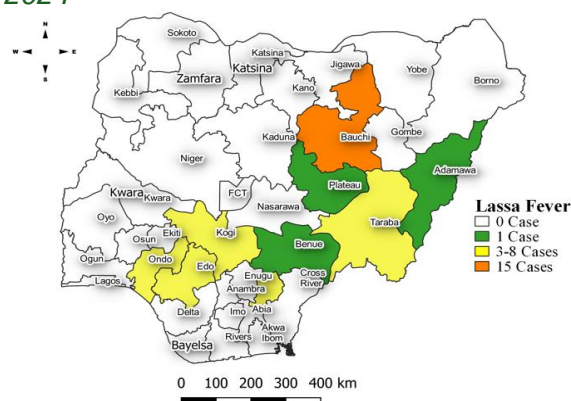


Figure 2: Location of **confirmed** cases of Lassa Fever by State, Nigeria, week 4, 2024



Key points

- There were 347 suspected cases of Lassa Fever reported from 22 LGAs in 20 states and FCT. There were 47 laboratory confirmed cases and five deaths were recorded.

Actions

To date:

- National Lassa fever multi-partner, multi-sectoral Technical Working Group (TWG) continues to coordinate the response activities at all levels.
- Distribution of response commodities -PPEs, Ribavirin (injection and tablets) body-bags, thermometers, hypochlorite hand sanitizers, IEC materials distributed to states and treatment centres

Cerebrospinal Meningitis (CSM)

Week 4

Suspected cases	Confirmed cases	Deaths	Number of States and LGAs affected
159	7	13	State: 16 LGA: 24

Year to date (week 1 – 4)

Suspected cases		Confirmed cases		Deaths		CFR	
2023	2024	2023	2024	2023	2024	2023	2024
552	414	53	12	0	35	0%	8.5%

Figure 3: Number of suspected and confirmed cases of CSM, Nigeria, weeks 1 – 4, 202

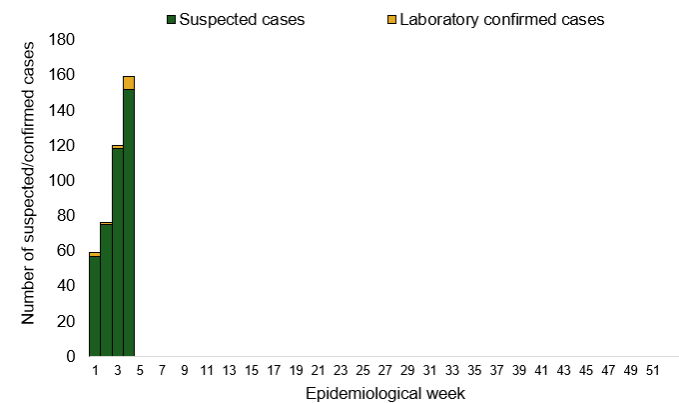
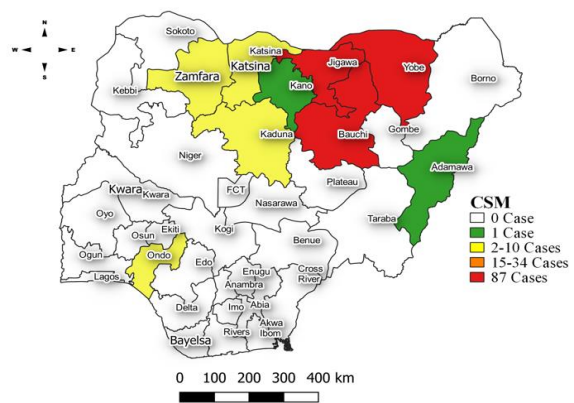


Figure 4: Location of suspected cases of CSM by State, Nigeria, week 4, 2024



Key points

- There were 159 suspected cases of Cerebrospinal meningitis (CSM) reported from 24 LGAs in 12 states. There were seven laboratory confirmed cases and 13 deaths were reported.

Actions

To date:

- National CSM TWG meets weekly to review reports from states and plan appropriately.

Yellow Fever

Week 4

Suspected cases	Confirmed cases	Deaths	Number of States and LGAs affected
51	0	0	State: 25 LGA: 41

Year to date (week 1 – 4)

Suspected cases		Confirmed cases		Deaths		CFR	
2023	2024	2023	2024	2023	2024	2023	2024
247	249	1	0	0	0	0%	0%

Figure 5: Number of suspected and confirmed cases of Yellow Fever, Nigeria, weeks 1 – 4, 2024

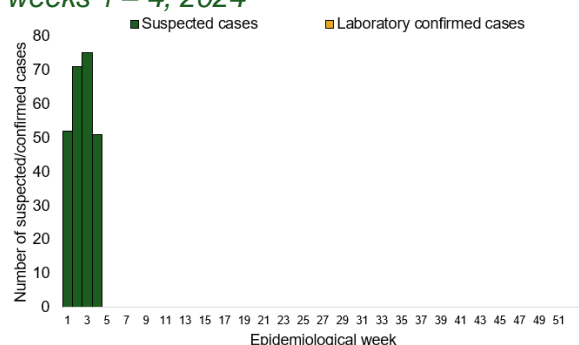
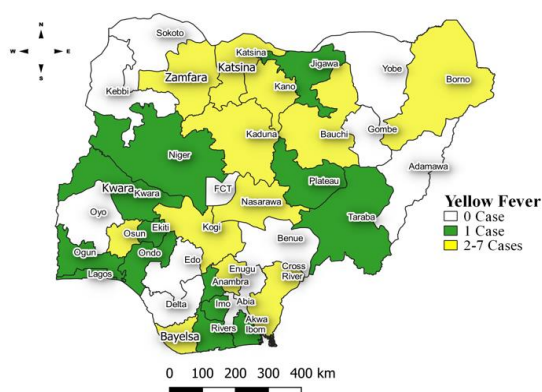


Figure 6: Location of suspected cases of Yellow Fever by States, Nigeria, week 4, 2024



Key points

- There were 51 suspected cases of Yellow Fever (YF) reported from 41 LGAs in 25 states. There was no laboratory confirmed case and no death was recorded.

Actions

To date:

- National YF multi-partner Technical Working Group (TWG) continues to coordinate activities across states.
- Daily monitoring and analysis of surveillance data across the country to guide response activities.
- Coordination of yellow fever sample management and transportation from all states to the regional reference laboratories
- Operationalization of Yellow fever Reference Laboratory at University of Maiduguri Teaching Hospital (UMTH) Maiduguri, Borno State

Cholera

Week 4

Suspected cases	Confirmed cases	Deaths	Number of States and LGAs affected
78	1	1	State: 10 LGA: 24

Year to date (week 1 – 4)

Suspected cases		Confirmed cases		Deaths		CFR	
2023	2024	2023	2024	2023	2024	2023	2024
573	335	4	1	21	3	3.7%	0.9%

Figure 7: Number of suspected and confirmed cases of Cholera, Nigeria, weeks 1 – 4, 2024

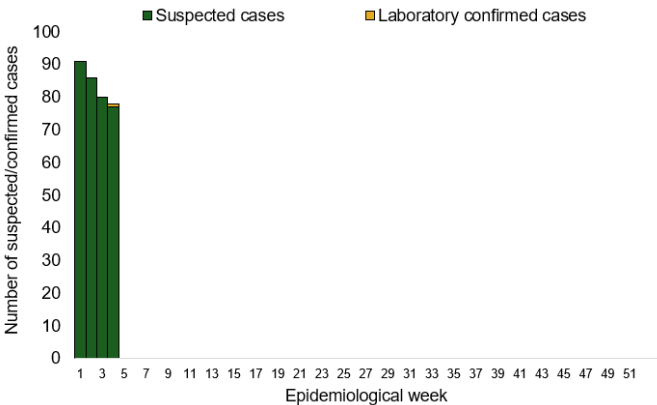
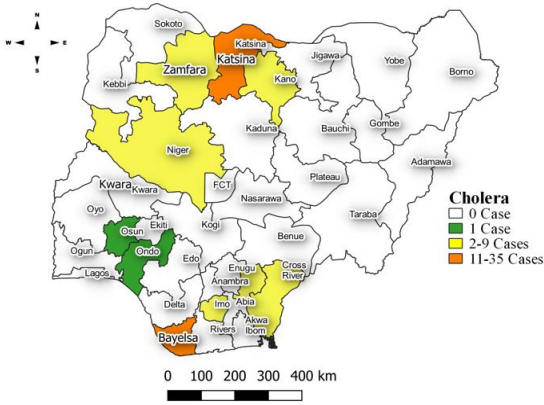


Figure 8: Location of suspected cases of Cholera by State, Nigeria, week 4, 2024



Key points

- There were 78 suspected cases of Cholera reported from 24 LGAs in ten states. There was one laboratory confirmed case and one death was recorded.

Actions

To date

- National Cholera Multi-Sectoral Technical Working Group (TWG) is monitoring all states and supporting affected states.

Measles

Week 4

Suspected cases	Confirmed cases	Deaths	Number of States and LGAs affected
744	117	5	State: 33 LGA: 167

Year to date (week 1 – 4)

Suspected cases		Confirmed cases		Deaths		CFR	
2023	2024	2023	2024	2023	2024	2023	2024
2380	2774	277	370	0	24	0%	0.1%

Figure 9: Number of suspected and confirmed cases of Measles, Nigeria, weeks 1 – 4, 2024.

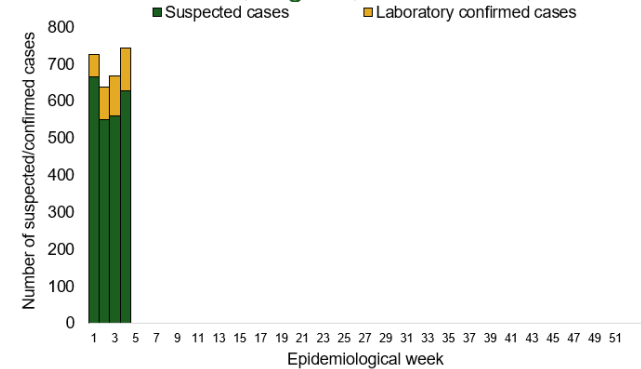
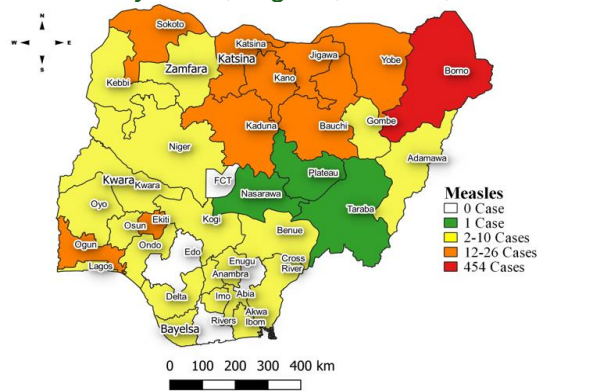


Figure 10: Location of suspected cases of Measles by State, Nigeria, week 4, 2024



Key points

- There were 744 suspected cases of Measles reported from 167 LGAs in 33 states. There were 117 laboratory confirmed cases and five deaths were recorded.

Actions

To date

- National Measles TWG is closely monitoring measles surveillance data and providing feedback to relevant agencies and development partners.

Mpox

Week 4

Suspected cases	Confirmed cases	Deaths	Number of States and LGAs affected
30	2	0	State: 9 LGA: 19

Year to date (week 1 – 4)

Suspected cases		Confirmed cases		Deaths		CFR	
2023	2024	2023	2024	2023	2024	2023	2024
186	54	27	2	1	0	0.5%	0%

Figure 11: Number of suspected and confirmed cases of Mpox, Nigeria, weeks 1– 4, 2024.

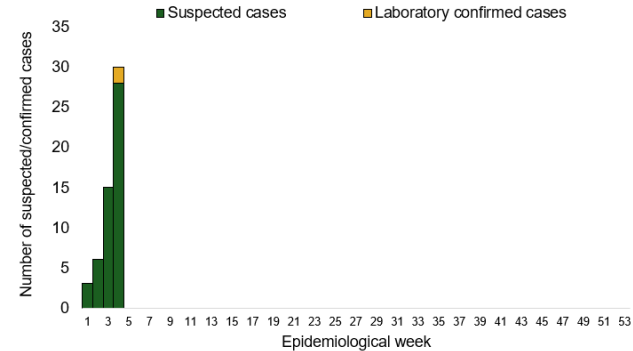
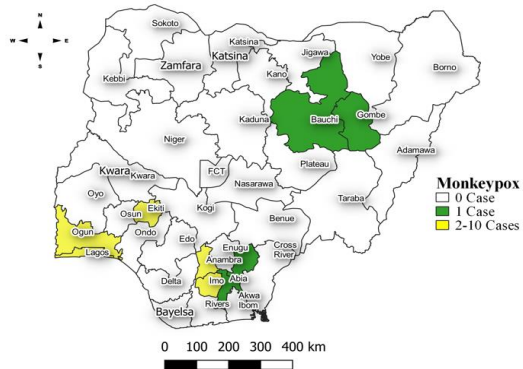


Figure 12: Location of suspected cases of Mpox by State, Nigeria, week 4, 2024



Key points

- There were 30 suspected cases of Mpox reported from 19 LGAs in nine states. There were 2 laboratory confirmed cases and no death was recorded.

Actions

To date

- National Mpox Technical Working Group (TWG) is monitoring activities in all states.

Acute Flaccid Paralysis (AFP)

Week 4

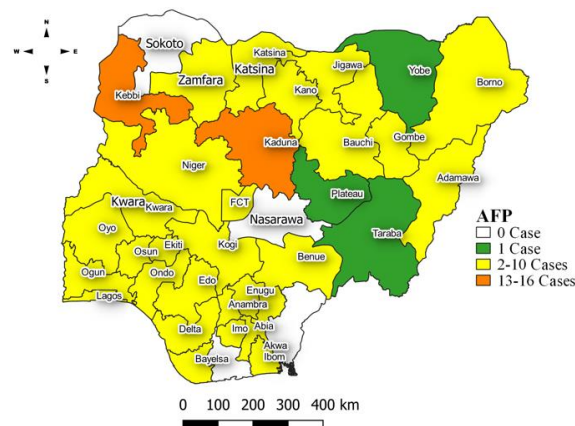
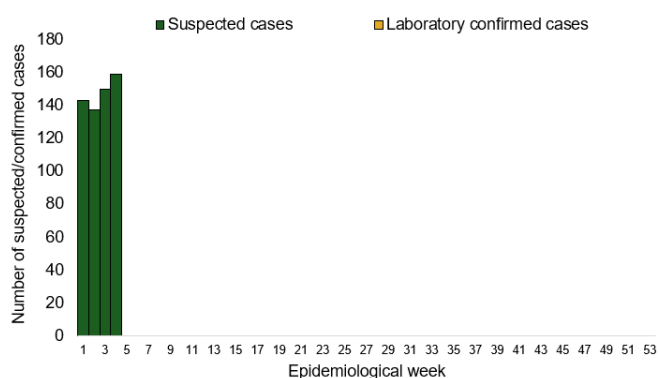
Suspected cases	Confirmed cases	Deaths	Number of States and LGAs affected
159	0	0	State: 32 + FCT LGA: 132

Year to date (week 1 – 4)

Suspected cases		Confirmed cases		Deaths		CFR	
2023	2024	2023	2024	2023	2024	2023	2024
631	589	0	0	0	0	0%	0%

Figure 13: Number of suspected and confirmed cases of AFP, Nigeria, weeks 1 – 4, 2024.

Figure 14: Location of suspected cases of AFP by State, Nigeria, week 4, 2024



Key points

- There were 159 suspected cases of AFP reported from 132 LGAs in 32 states and FCT. There was no laboratory confirmed case and no death was recorded.

National Influenza Sentinel Surveillance

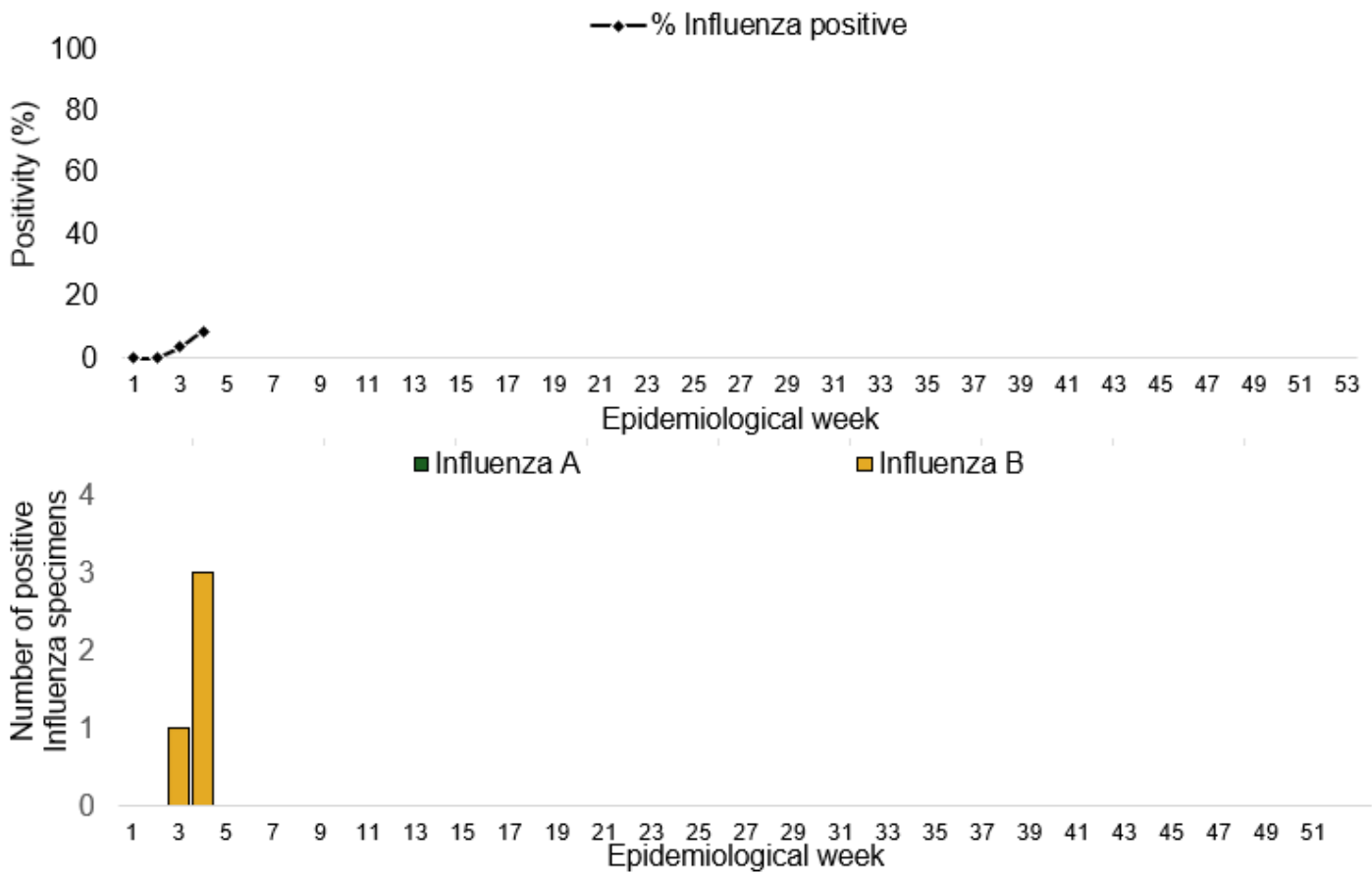
Week 4

Suspected Cases	Confirmed Cases	Confirmed Case by type	
		Influenza A	Influenza B
34	3	0	3

Year to date (week 1 – 4)

Suspected cases	Total Confirmed Cases	Confirmed cases by type	
71	4	Influenza A	Influenza B
		0	4

Figure 15: Number of influenza positive specimens by type and percentage positive by epidemiological week, 2023.



Coronavirus Disease (COVID-19)

Week 4

Suspected cases	Confirmed cases	Deaths	Number of States and LGAs affected
45	45	0	State: 5 + FCT LGA: 19

Year to date (Week 1- 4)

Suspected cases		Confirmed cases		Deaths		CFR	
2023	2024	2023	2024	2023	2024	2023	2024
104	89	104	89	1	0	0.9%	0%

Figure 16: Epidemic curve of confirmed cases of COVID-19, Nigeria, week 4, 2024

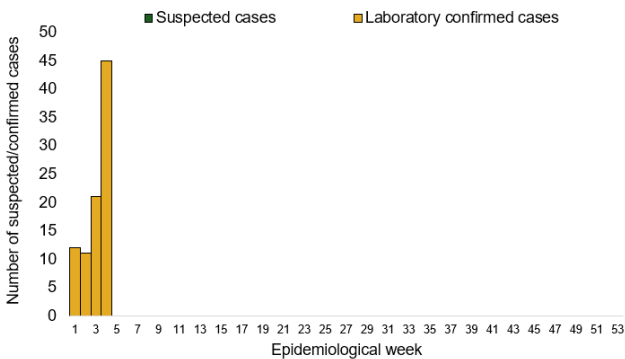
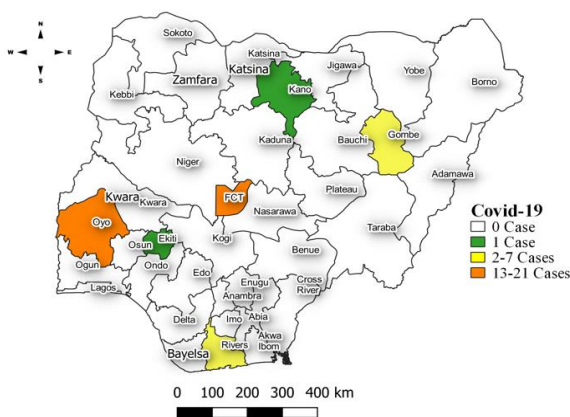


Figure 17: Location of **confirmed** cases of COVID-19 by State, Nigeria, as at week 4, 2024



Key points

- There were 45 suspected cases of Covid-19 reported from 19 LGAs in five states and FCT. There were 45 confirmed cases and no death recorded

Actions

To date:

- Multi-sectoral Public Health Emergency Operation Centres (PHEOC) activated at the National and affected States.

Diphtheria

Week 4

Suspected cases	Confirmed cases	Deaths	Number of States and LGAs affected
505	282	5	State: 9 + FCT LGA: 62

Year to date (week 1 – 4)

Suspected cases		Confirmed cases		Deaths		CFR	
2023	2024	2023	2024	2023	2024	2023	2024
440	2176	265	1140	49	23	11.1%	1.1%

Figure 18: Number of suspected and confirmed cases of Diphtheria, Nigeria, weeks 1 – 4, 2024

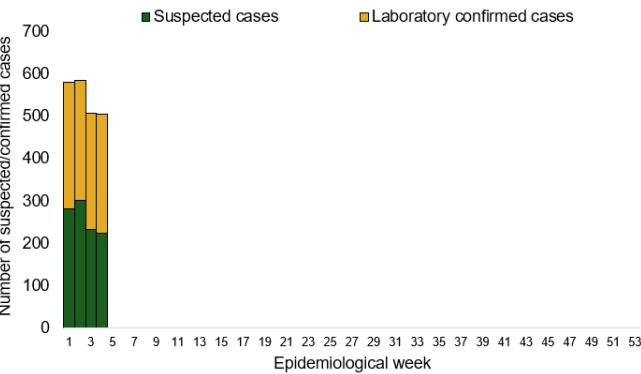
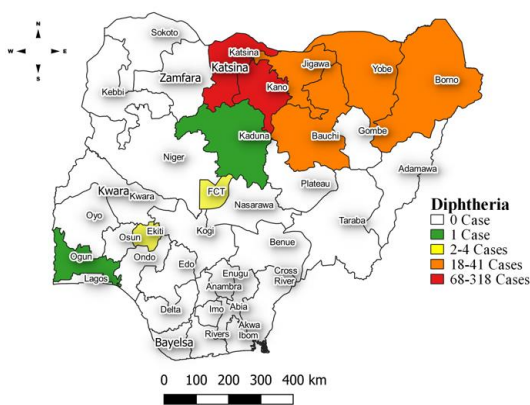


Figure 19: Location of suspected cases of Diphtheria by State, Nigeria, week 4, 2024



Key points

- There were 505 suspected cases of Diphtheria reported from 62 LGAs in nine states and FCT. There were 282 confirmed cases and five deaths were recorded.

Actions
To date

- National Diphtheria Technical Working Group (TWG) is monitoring activities in all states.

Event Based Surveillance (EBS)

Week 4

Key points

For the reporting week 4:

- 115 Calls were successfully routed to agents and answered
- 2 calls not routed to agents (Failed call)
- 117 total number of calls (successful and failed)
- 4 number of SMS received
- 0 WhatsApp/live chat messages received
- Percentage of failed to total inbound calls 1.7%
- 0 signal picked

For week 1 – 4

- 326 calls were successfully routed to agents and answered
- 13 calls not routed to agents (Failed call)
- 339 total inbound calls recorded • Percentage of failed to total inbound calls: 3.6%
- 2 Signals picked and escalated

Categories of Calls

- General inquiries 16
- Hoax call and others 35
- Report of health conditions 1
- Inquiry on Lassa fever 14
- Inquiry on malaria vaccine 0
- Health Declaration form-related queries 0
- Inquiries on Diphtheria symptoms, treatment, and Vaccine 8
- Inquiries on yellow fever vaccine 0
- Inquiries on Lassa fever vaccine 11
- Covid19 vaccination inquiries 1

Figure 20: Number of successful and failed calls, weeks 1 – 3, 2024

