



Nigeria Centre for Disease Control and Prevention

Protecting the health of Nigerians

Weekly Epidemiological Report

Week 2: 8th – 14th January 2024

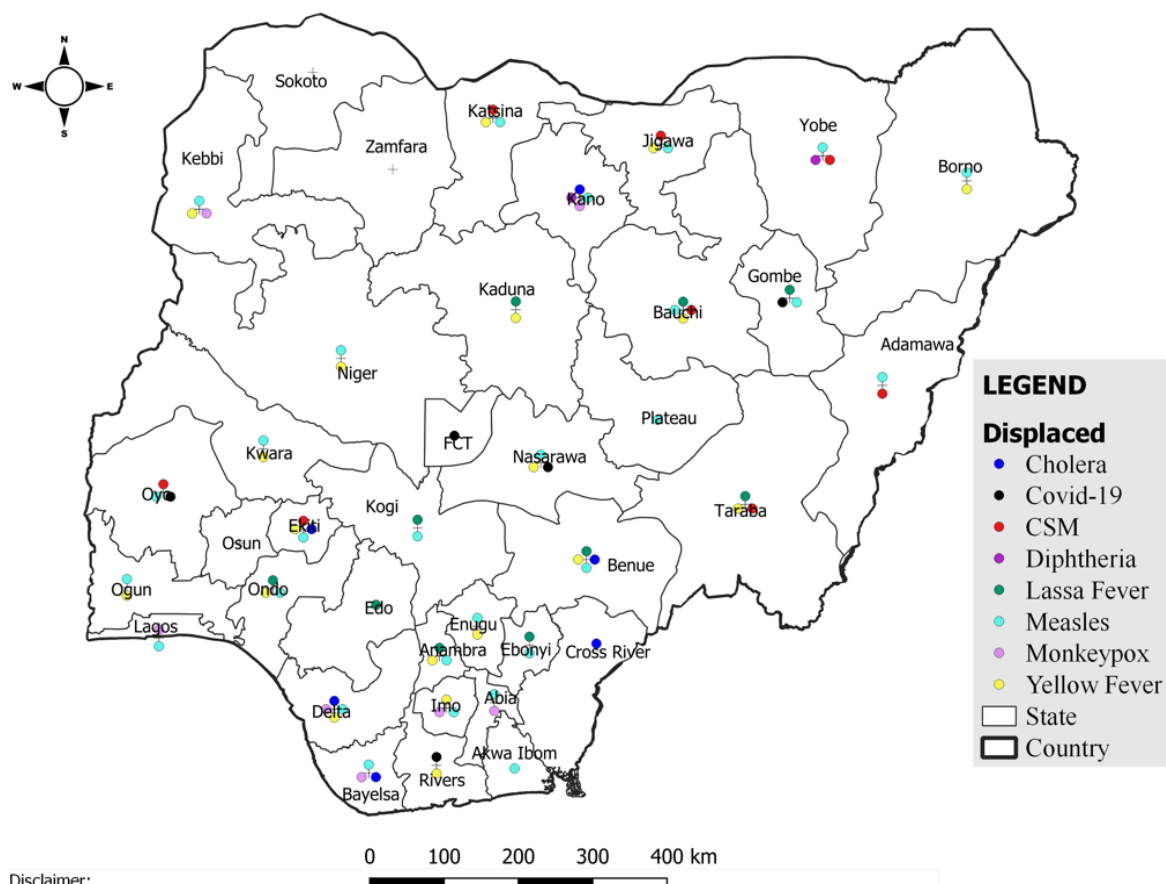
Summary of Incidents

Ongoing incidents

2

Ongoing incidents are defined as confirmed cases where a national EOC or equivalent has been activated (Lassa Fever and Diphtheria)

Other incidents are those with confirmed cases for which EOC is not activated



Summary

Week 2: 8th – 14th January 2024

Lassa Fever ^{1,2}	Cerebrospinal Meningitis (CSM) ^{1,4}	Yellow Fever ^{1,4}
296 Suspected case(s)	76 Suspected case(s)	71 Suspected case(s)
81 Confirmed case(s)	1 Confirmed case(s)	0 Confirmed case(s)
16 Death(s)	9 Death(s)	0 Death(s)
Cholera ^{1,4}	Measles ^{1,4}	Mpox ^{1,4}
86 Suspected case(s)	637 Suspected case(s)	6 Suspected case(s)
0 Confirmed case(s)	86 Confirmed case(s)	0 Confirmed case(s)
0 Death(s)	5 Death(s)	0 Death(s)
Acute Flaccid Paralysis (AFP) ^{1,4}	National Sentinel influenza surveillance ⁵	Coronavirus Disease ^{1,}
137 Suspected case(s)	10 Suspected case(s)	11 Suspected case(s)
0 Confirmed case(s)	0 Confirmed case(s)	11 Confirmed case(s)
		0 Death(s)
Diphtheria ^{1,4}		
584 Suspected case(s)		
283 Confirmed case(s)		
6 Death(s)		

1. Information for this disease was retrieved from the Technical Working Group and Situation Reports
2. Case Fatality Rate (CFR) for this disease is reported for confirmed cases only.

3. CFR for this disease is reported for total cases i.e. suspected + confirmed.
4. Information for sentinel influenza was retrieved from the laboratory.

Lassa Fever

Week 2

Suspected cases	Confirmed cases	Deaths	Number of States and LGAs affected
296	81	16	State: 15 LGA: 30

Year to date (week 1 – 2)

Suspected cases		Confirmed cases		Deaths		CFR	
2023	2024	2023	2024	2023	2024	2023	2024
207	486	88	134	20	22	22.7%	16.4%

Figure 1: Number of suspected and confirmed cases of Lassa Fever, Nigeria, Weeks 1 – 2, 2024

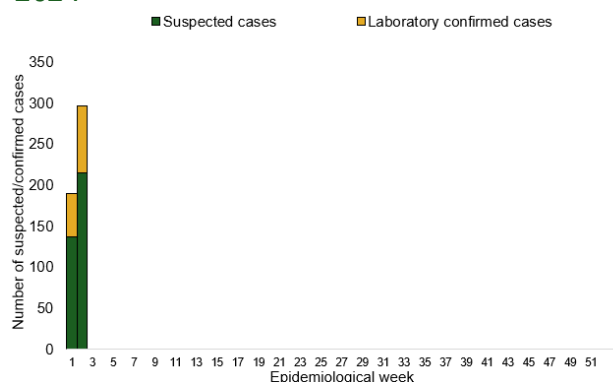
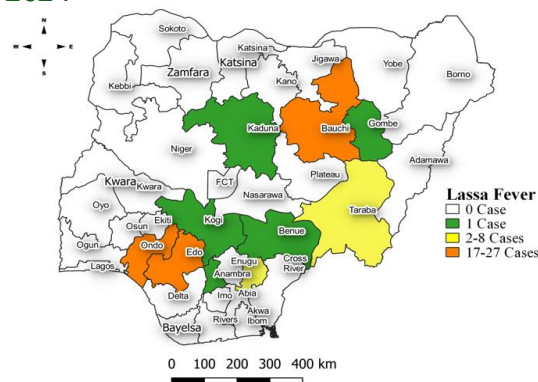


Figure 2: Location of **confirmed** cases of Lassa Fever by State, Nigeria, week 2, 2024



Key points

- There were 296 suspected cases of Lassa Fever reported from 30 LGAs in 15 states. There were 81 laboratory confirmed cases and 16 deaths were recorded.

Actions

To date:

- National Lassa fever multi-partner, multi-sectoral Technical Working Group (TWG) continues to coordinate the response activities at all levels.
- Participated in ERPHC workshop for the review of IDSR/IPC foundational course
- Send alert letters to all states, the FCT, and the NGF

Cerebrospinal Meningitis (CSM)

Week 2

Suspected cases	Confirmed cases	Deaths	Number of States and LGAs affected
76	1	9	State: 9 LGA: 21

Year to date (week 1 – 2)

Suspected cases		Confirmed cases		Deaths		CFR	
2023	2024	2023	2024	2023	2024	2023	2024
56	135	2	3	0	12	0%	8.9%

Figure 3: Number of suspected and confirmed cases of CSM, Nigeria, weeks 1 – 2, 2024

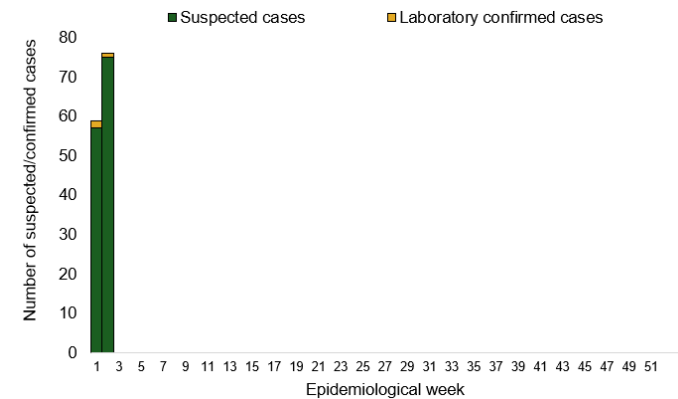
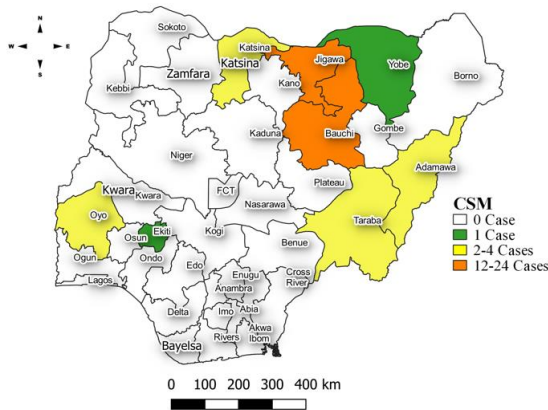


Figure 4: Location of suspected cases of CSM by State, Nigeria, week 2, 2024



Key points

- There were 76 suspected cases of Cerebrospinal meningitis (CSM) reported from 21 LGAs in nine states. There was one laboratory confirmed case and nine deaths were reported.

Actions

To date:

- National CSM TWG meets weekly to review reports from states and plan appropriately.

Yellow Fever

Week 2

Suspected cases	Confirmed cases	Deaths	Number of States and LGAs affected
71	0	0	State: 24 LGA: 56

Year to date (week 1 – 2)

Suspected cases		Confirmed cases		Deaths		CFR	
2023	2024	2023	2024	2023	2024	2023	2024
141	123	0	0	0	0	0%	0%

Figure 5: Number of suspected and confirmed cases of Yellow Fever, Nigeria, weeks 1 – 2, 2024

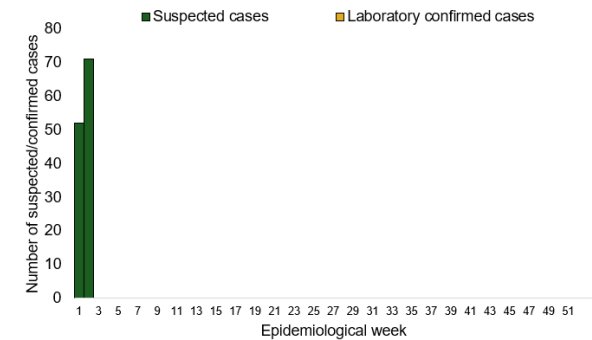
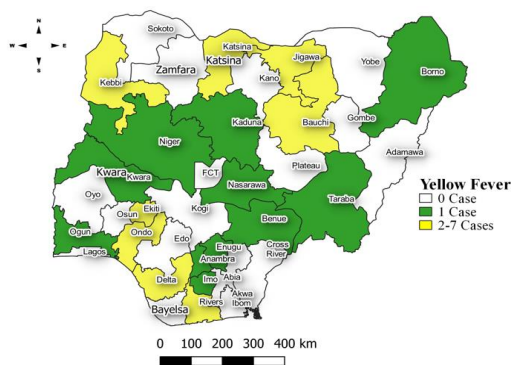


Figure 6: Location of suspected cases of Yellow Fever by States, Nigeria, week 2, 2024



Key points

- There were 71 suspected cases of Yellow Fever (YF) reported from 56 LGAs in 24 states. There was no laboratory confirmed case and no death was recorded.

Actions

To date:

- National YF multi-partner Technical Working Group (TWG) continues to coordinate activities across states.
- Daily monitoring and analysis of surveillance data across the country to guide response activities.
- Coordination of yellow fever sample management and transportation from all states to the regional reference laboratories
- Operationalization of Yellow fever Reference Laboratory at University of Maiduguri Teaching Hospital (UMTH) Maiduguri, Borno State

Cholera

Week 2

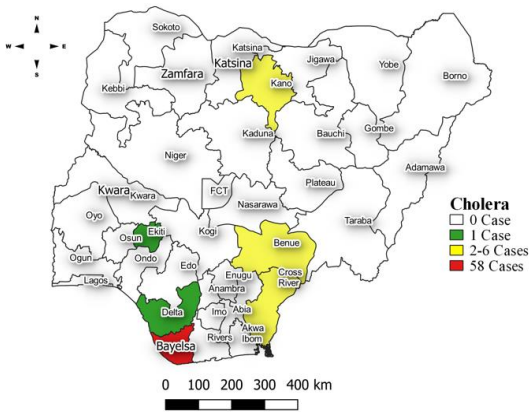
Suspected cases	Confirmed cases	Deaths	Number of States and LGAs affected
86	0	0	State: 8 LGA: 17

Year to date (week 1 – 2)

Suspected cases		Confirmed cases		Deaths		CFR	
2023	2024	2023	2024	2023	2024	2023	2024
153	177	3	0	8	1	5.2%	0.6%

Figure 7: Number of suspected and confirmed cases of Cholera, Nigeria, weeks 1 – 2, 2024

Figure 8: Location of suspected cases of Cholera by State, Nigeria, week 2, 2024



Key points

- There were 86 suspected cases of Cholera reported from 17 LGAs in eight states. There was no laboratory confirmed case and no death was recorded.

Actions

To date

- National Cholera Multi-Sectoral Technical Working Group (TWG) is monitoring all states and supporting affected states.
- Ongoing surveillance in all states through the routine Integrated Disease Surveillance and Response (IDSR) and Event Based Surveillance (EBS).
- Cholera surveillance evaluation across states.

Measles

Week 2

Suspected cases	Confirmed cases	Deaths	Number of States and LGAs affected
637	86	5	State: 34 LGA: 140

Year to date (week 1 – 2)

Suspected cases		Confirmed cases		Deaths		CFR	
2023	2024	2023	2024	2023	2024	2023	2024
1231	1362	135	146	0	13	0%	0.1%

Figure 9: Number of suspected and confirmed cases of Measles, Nigeria, weeks 1 – 2, 2024.

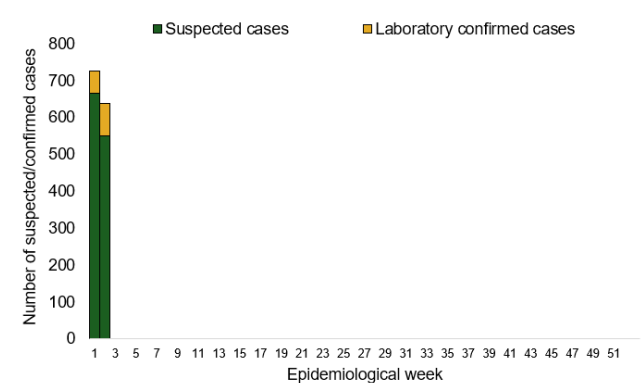
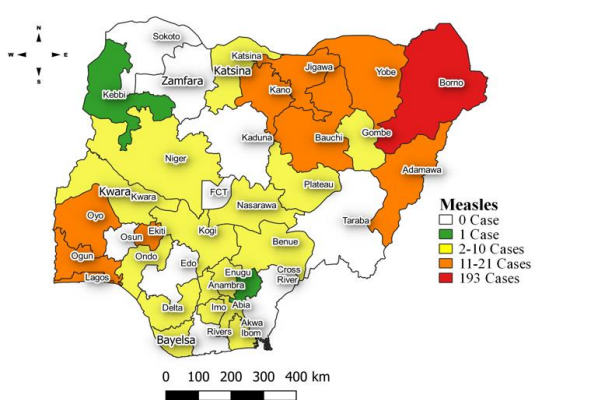


Figure 10: Location of suspected cases of Measles by State, Nigeria, week 2, 2024



Key points

- There were 637 suspected cases of Measles reported from 140 LGAs in 28 states. There were 86 laboratory confirmed cases and five deaths were recorded.

Actions
To date

- National Measles TWG is closely monitoring measles surveillance data and providing feedback to relevant agencies and development partners.
- Ongoing weekly surveillance and laboratory data harmonisation.

Mpox

Week 2

Suspected cases	Confirmed cases	Deaths	Number of States and LGAs affected
6	0	0	State: 6 LGA: 6

Year to date (week 1 – 2)

Suspected cases		Confirmed cases		Deaths		CFR	
2023	2024	2023	2024	2023	2024	2023	2024
55	9	13	0	1	0	1.8%	0%

Figure 11: Number of suspected and confirmed cases of Mpox, Nigeria, weeks 1– 2, 2023.

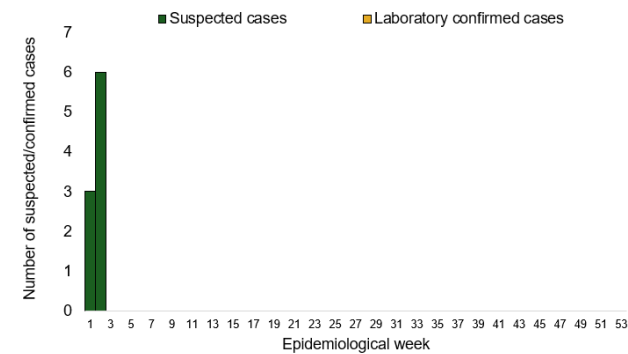
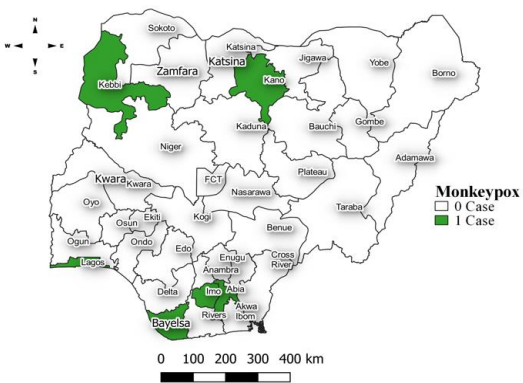


Figure 12: Location of suspected cases of Mpox by State, Nigeria, week 2, 2024



Key points

- There were six suspected cases of Mpox reported from six LGAs in six states. There was no laboratory confirmed case and no death was recorded.

Actions
To date

- National Mpox Technical Working Group (TWG) is monitoring activities in all states.

Acute Flaccid Paralysis (AFP)

Week 2

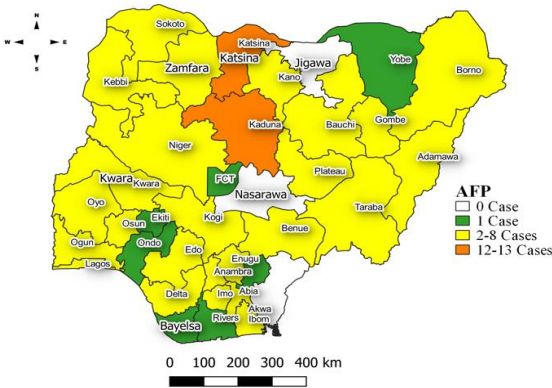
Suspected cases	Confirmed cases	Deaths	Number of States and LGAs affected
137	0	0	State: 31 + FCT LGA: 112

Year to date (week 1 – 2)

Suspected cases		Confirmed cases		Deaths		CFR	
2023	2024	2023	2024	2023	2024	2023	2024
343	280	0	0	0	0	0%	0%

Figure 13: Number of suspected and confirmed cases of AFP, Nigeria, weeks 1 – 2, 2024

Figure 14: Location of suspected cases of AFP by State, Nigeria, week 2, 2024



Key points

- There were 137 suspected cases of AFP reported from 112 LGAs in 31 states and FCT. There was no laboratory confirmed case and no death was recorded.

National Influenza Sentinel Surveillance

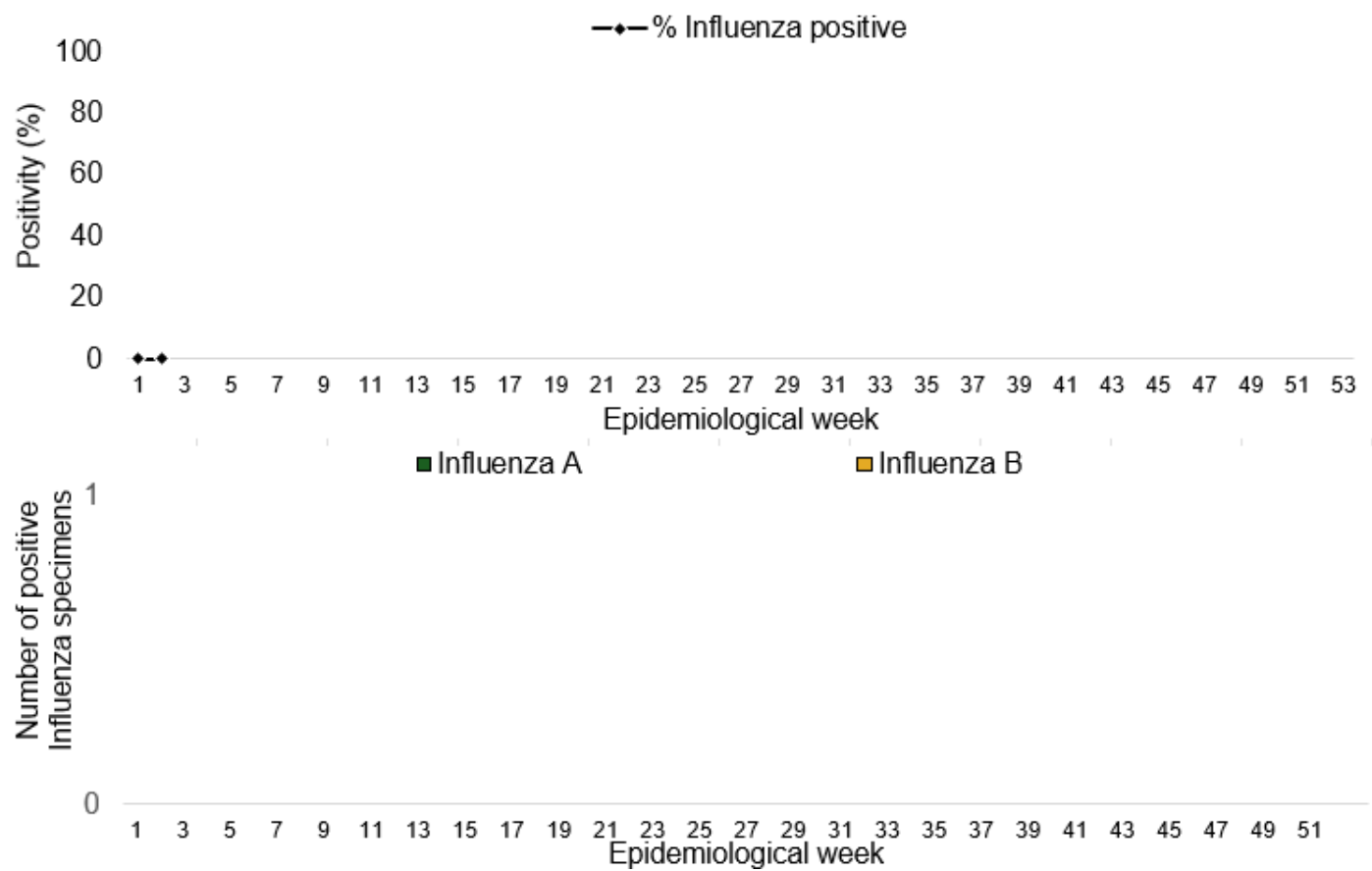
Week 2

Suspected Cases	Confirmed Cases	Confirmed Case by type	
		Influenza A	Influenza B
10	0	0	0

Year to date (week 1 – 2)

Suspected cases	Total Confirmed Cases	Confirmed cases by type	
10	0	Influenza A	Influenza B
		0	0

Figure 15: Number of influenza positive specimens by type and percentage positive by epidemiological week, 2023.



Coronavirus Disease (COVID-19)

Week 2

Suspected cases	Confirmed cases	Deaths	Number of States and LGAs affected
11	11	0	State: 4 + FCT LGA: 7

Year to date (Week 1- 2)

Suspected cases		Confirmed cases		Deaths		CFR	
2023	2024	2023	2024	2023	2024	2023	2024
25	23	25	23	0	0	0%	0%

Figure 16: Epidemic curve of confirmed cases of COVID-19, Nigeria, week 1 - 2, 2024

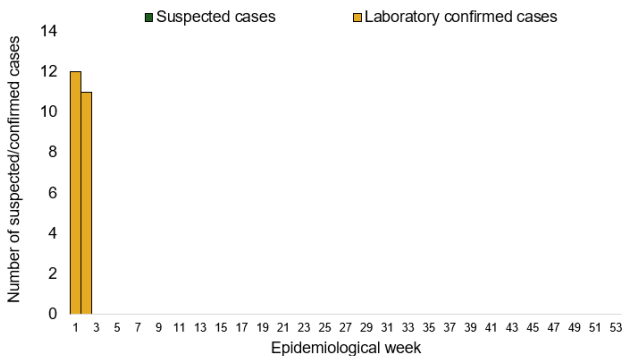
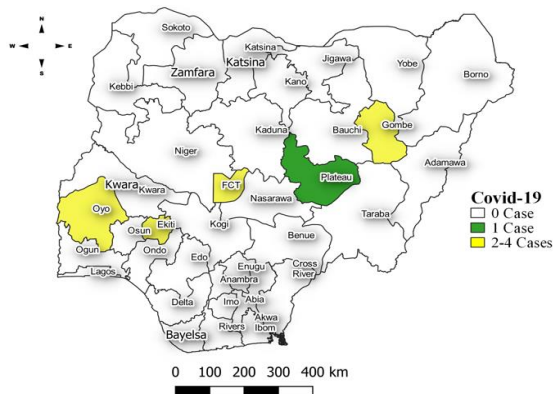


Figure 17: Location of **confirmed** cases of COVID-19 by State, Nigeria, as at week 2, 2024



Key points

- There were eleven suspected cases of Covid-19 reported from seven LGAs in four states and FCT. There were eleven confirmed cases and no death recorded

Actions

To date:

- Multi-sectoral Public Health Emergency Operation Centres (PHEOC) activated at the National and affected States.

Diphtheria

Week 2

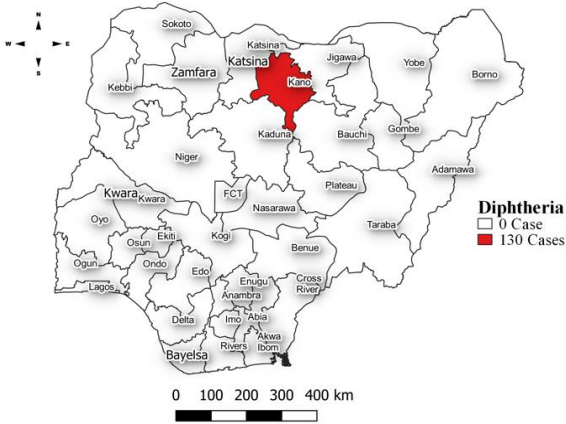
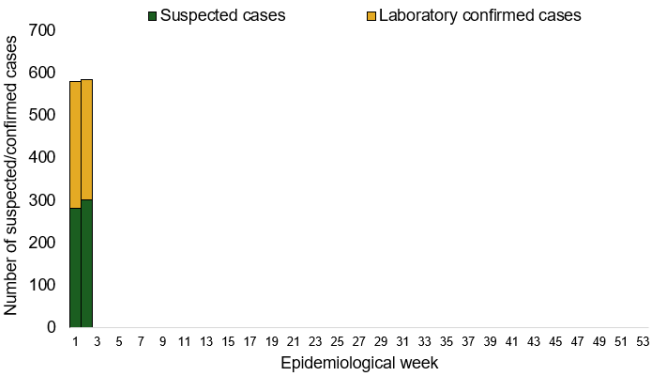
Suspected cases	Confirmed cases	Deaths	Number of States and LGAs affected
584	283	6	State: 10 + FCT LGA: 70

Year to date (week 1 – 2)

Suspected cases		Confirmed cases		Deaths		CFR	
2023	2024	2023	2024	2023	2024	2023	2024
121	1165	65	583	6	11	5%	0.9%

Figure 18: Number of suspected and confirmed cases of Diphtheria, Nigeria, weeks 1 – 2, 2024

Figure 19: Location of suspected cases of Diphtheria by State, Nigeria, week 2, 2024



Key points

- There were 584 suspected cases of Diphtheria reported from 70 LGAs in ten state and FCT. There were 283 confirmed cases, and six deaths were recorded.

Actions
To date

- National Diphtheria Technical Working Group (TWG) is monitoring activities in all states.
- Harmonisation of surveillance and laboratory data from across states and laboratories.
- Provision of off-site surveillance support to affected States.

Event Based Surveillance (EBS)

Week 2

Key Points

For the reporting week 2:

- 41 Calls were successfully routed to agents and answered
- 11 calls not routed to agents (Failed call)
- 52 total number of calls (successful and failed)
- 7 number of SMS received
- 0 WhatsApp/live chat messages received
- Percentage of failed to total inbound calls 21.2%
- 1 signal picked and escalated about a series of deaths in kano. After confirmation turns out not be a true event

Year to date (Week 1 – 2):

- 108 calls were successfully routed to agents and answered
- 11 calls not routed to agents (Failed call)
- 119 total inbound calls recorded
- Percentage of failed to total inbound calls: 0.0%
- 0 Signals picked and escalated to 36 states and FCT

Categories of Calls

- General inquiries 0 • Hoax call and others 11
- Report of health conditions 9 • Inquiry on Lassa fever 7
- Inquiry on malaria vaccine 0
- Health Declaration form-related queries 0
- Inquiries on Diphtheria symptoms, treatment, and Vaccine 9
- Inquiries on yellow fever vaccine 0
- Inquiries on Lassa fever vaccine 5

Figure 20: Number of successful and failed calls, weeks 1 – 2, 2024

