



Nigeria Centre for Disease Control and Prevention
Protecting the health of Nigerians

Weekly Epidemiological Report

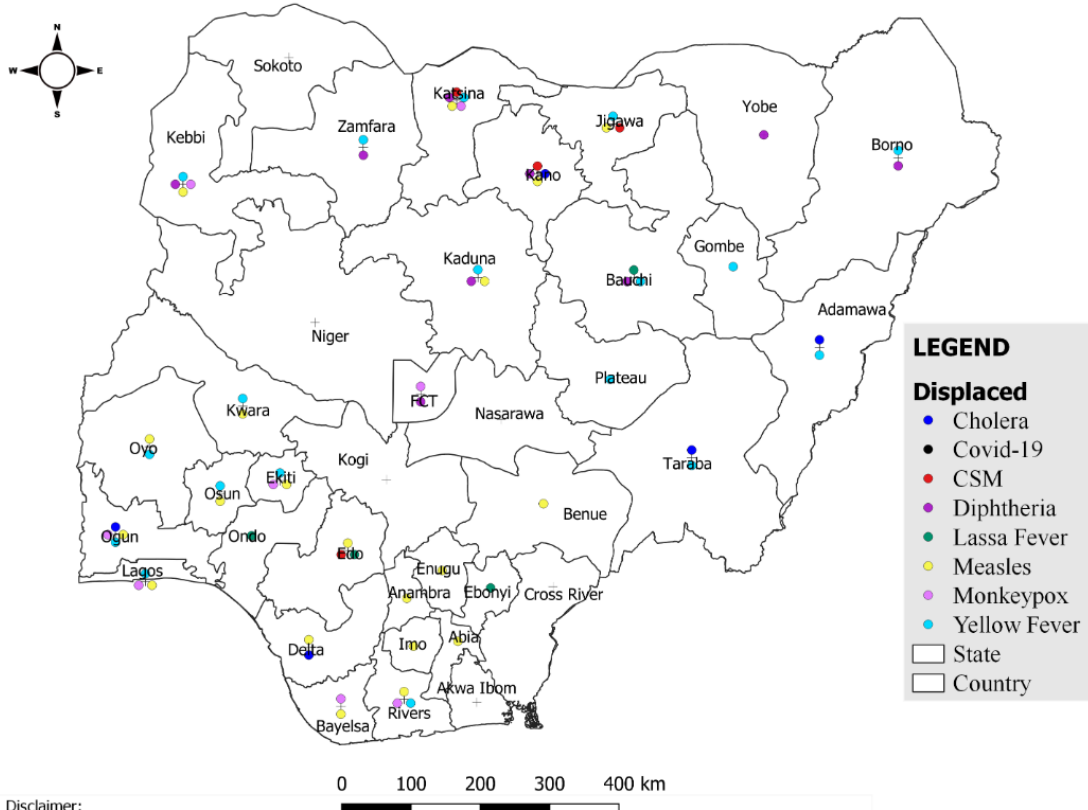
Week 48: 27th November – 3rd December, 2023

Summary of Incidents

Ongoing incidents
2

Ongoing incidents are defined as confirmed cases where a national EOC or equivalent has been activated (Lassa Fever and Diphtheria)

Other incidents are those with confirmed cases for which EOC is not activated



Data Source: SITAware
Zc

Summary

Week 48: 27th November – 3rd December, 2023

Lassa Fever ^{1,2}	Cerebrospinal Meningitis (CSM) ^{1,4}	Yellow Fever ^{1,4}
119 Suspected case(s)	7 Suspected case(s)	84 Suspected case(s)
16 Confirmed case(s)	3 Confirmed case(s)	0 Confirmed case(s)
4 Death(s)	0 Death(s)	0 Death(s)
Cholera ^{1,4}	Measles ^{1,4}	Mpox ^{1,4}
8 Suspected case(s)	91 Suspected case(s)	20 Suspected case(s)
0 Confirmed case(s)	16 Confirmed case(s)	4 Confirmed case(s)
2 Death(s)	0 Death(s)	0 Death(s)
Acute Flaccid Paralysis (AFP) ^{1,4}	National Sentinel influenza surveillance ⁵	Coronavirus Disease ^{1,}
13 Suspected case(s)	16 Suspected case(s)	0 Suspected case(s)
0 Confirmed case(s)	0 Confirmed case(s)	0 Confirmed case(s)
		0 Death(s)
Diphtheria ^{1,4}		
454 Suspected case(s)		
354 Confirmed case(s)		
4 Death(s)		

- Information for this disease was retrieved from the Technical Working Group and Situation Reports
- Case Fatality Rate (CFR) for this disease is reported for confirmed cases only
- CFR for this disease is reported for total cases i.e. suspected + confirmed
- Information for sentinel influenza was retrieved from the laboratory

Lassa Fever

Week 48

Suspected cases	Confirmed cases	Deaths	Number of States and LGAs affected
119	16	4	State: 17 LGA: 19

Year to date (week 1 – 48)

Suspected cases		Confirmed cases		Deaths		CFR	
2022	2023	2022	2023	2022	2023	2022	2023
7763	8542	1015	1170	187	201	18.4%	17.2%

Figure 1: Number of suspected and confirmed cases of Lassa Fever, Nigeria, Weeks 1 – 48, 2023

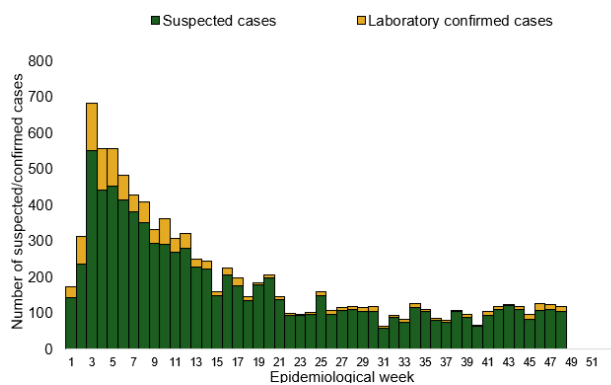
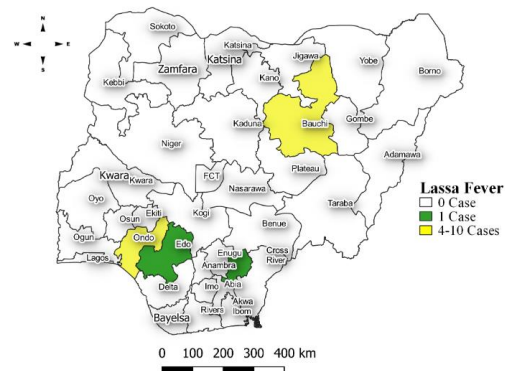


Figure 2: Location of **confirmed** cases of Lassa Fever by State, Nigeria, week 48, 2023



Key points

- There were 119 suspected cases of Lassa Fever reported from 19 LGAs in 17 states. There were 16 laboratory confirmed cases reported from six LGAs in four states and four deaths were recorded.
- One new healthcare worker was affected this week.

Actions

To date:

- National Lassa fever multi-partner, multi-sectoral Technical Working Group (TWG) continues to coordinate the response activities at all levels
- Activation of the Lassa Fever EOC
- Deployed NRRT to 6 states – Bauchi, Benue, Ebonyi, Edo, Ondo & Taraba
- Participated in National Enhanced Situational Awareness (ESA) Project Implementation Workshop
- Conducted the first Lassa fever webinar series
- Utilizing LISTEN for Lassa Fever Control
- Identify key activities for partners to support in preparation for the upcoming breakout season

Cerebrospinal Meningitis (CSM)

Week 48

Suspected cases	Confirmed cases	Deaths	Number of States and LGAs affected
7	3	1	State: 4 LGA: 6

Year to date (week 1 – 48)

Suspected cases		Confirmed cases		Deaths		CFR	
2022	2023	2022	2023	2022	2023	2022	2023
859	2522	0	319	103	160	12%	6.3%

Figure 3: Number of suspected and confirmed cases of CSM, Nigeria, weeks 1 – 48, 2023

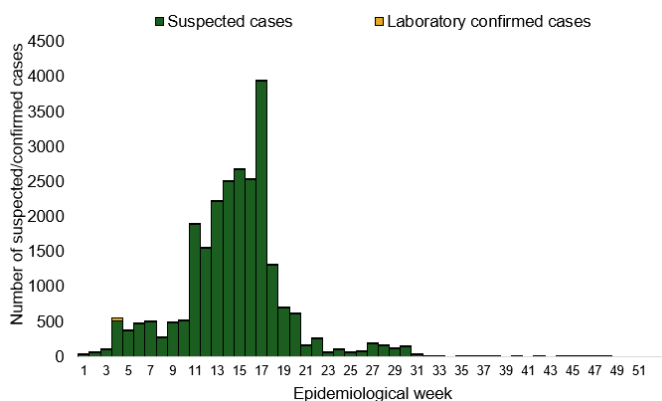
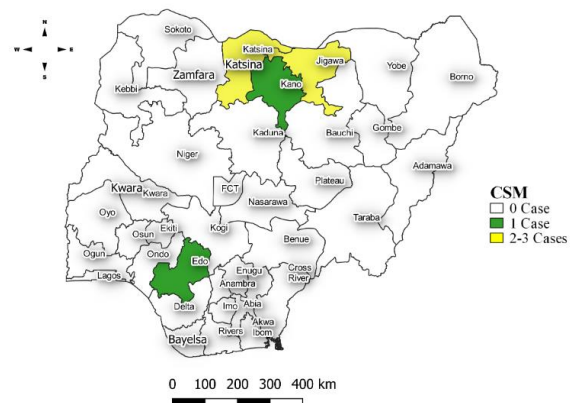


Figure 4: Location of suspected cases of CSM by State, Nigeria, week 48, 2023



Key points

- There were seven suspected cases of Cerebrospinal meningitis (CSM) reported from six LGAs in four states. There were three laboratory confirmed cases and one death was reported.

Actions

To date:

- National CSM TWG meets weekly to review reports from states and plan appropriately.
- Monitoring of epidemiological trend to guide plans for reactive vaccination campaigns,
- Implementation of CSM reactive vaccination campaign in high burden LGAs/Wards in Jigawa state led by NPHCDA.
- Enhanced surveillance (active case search and contact tracing) in affected states and LGAs,
- Deployment of SORMAS application to secondary and tertiary HFs.

Yellow Fever

Week 48

Suspected cases	Confirmed cases	Deaths	Number of States and LGAs affected
84	0	0	State: 18 LGA: 29

Year to date (week 1 – 48)

Suspected cases		Confirmed cases		Deaths		CFR	
2022	2023	2022	2023	2022	2023	2022	2023
2049	2922	0	21	10	9	0.5%	0.3%

Figure 5: Number of suspected and confirmed cases of Yellow Fever, Nigeria, weeks 1 – 48, 2023

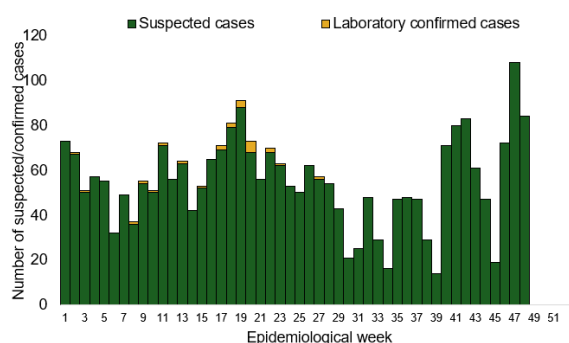
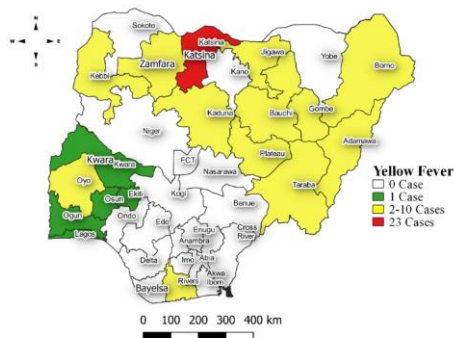


Figure 6: Location of suspected cases of Yellow Fever by States, Nigeria, week 48, 2023



Key points

- There were 84 suspected cases of Yellow Fever (YF) reported from 29 LGAs in 18 states. There was no laboratory confirmed case and no death was recorded.

Actions

To date:

- National YF multi-partner Technical Working Group (TWG) continues to coordinate activities across states.
- Daily monitoring and analysis of surveillance data across the country to guide response activities.
- National YF multi-partner Technical Working Group (TWG) continues to coordinate activities across states.
- Daily monitoring and analysis of surveillance data across the country to guide response activities.
- Supported implementation of yellow fever Preventive Mass Vaccination Campaign (PMVC) phase 7, 2023 in Jigawa, and some LGAs in Borno State
- Operationalization of Yellow fever Reference Laboratory at University of Maiduguri Teaching Hospital (UMTH) Maiduguri, Borno State
- Providing offsite support to states with confirmed cases States

Cholera

Week 48

Suspected cases	Confirmed cases	Deaths	Number of States and LGAs affected
8	0	2	State: 5 LGA: 5

Year to date (week 1 – 48)

Suspected cases		Confirmed cases		Deaths		CFR	
2022	2023	2022	2023	2022	2023	2022	2023
16907	3639	0	238	451	126	2.6%	3.5%

Figure 7: Number of suspected and confirmed cases of Cholera, Nigeria, weeks 1 – 48, 2023

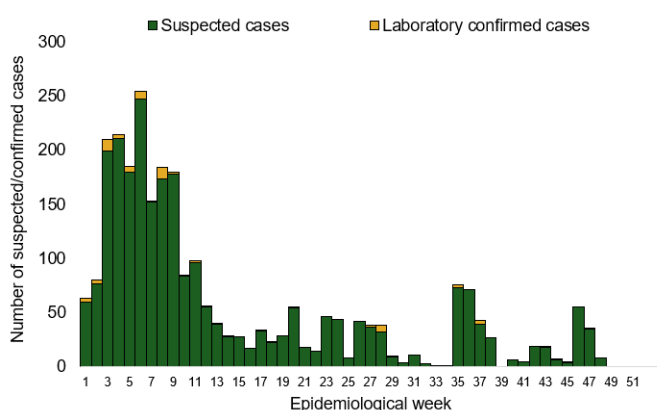
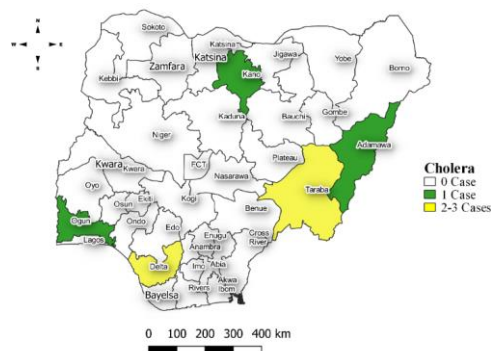


Figure 8: Location of suspected cases of Cholera by State, Nigeria, week 48, 2023



Key points

- There were 8 suspected cases of Cholera reported from five LGAs in five states. There was no laboratory confirmed case and two deaths were recorded

Actions

To date

- National Cholera Multi-Sectoral Technical Working Group (TWG) is monitoring all states and supporting affected states.
- Ongoing surveillance in all states through the routine Integrated Disease Surveillance and Response (IDSR) and Event Based Surveillance (EBS).
- Continuous construction of sanitation and hygiene facilities with boreholes in cholera hotspots • Conducted WASH Sector review workshop.
- Cholera surveillance evaluation across states.
- Continue advocacy to State Governments to increase funding in WASH infrastructure.
- Continue review of the National Cholera Plan.

Measles

Week 48

Suspected cases	Confirmed cases	Deaths	Number of States and LGAs affected
91	16	0	State: 15 LGA: 37

Year to date (week 1 – 48)

Suspected cases		Confirmed cases		Deaths		CFR	
2022	2023	2022	2023	2022	2023	2022	2023
58182	19138	3486	1770	314	81	0.5%	0.4%

Figure 9: Number of suspected and confirmed cases of Measles, Nigeria, weeks 1 – 48, 2023.

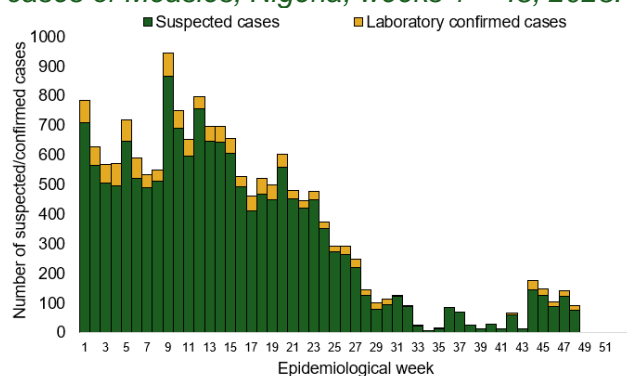
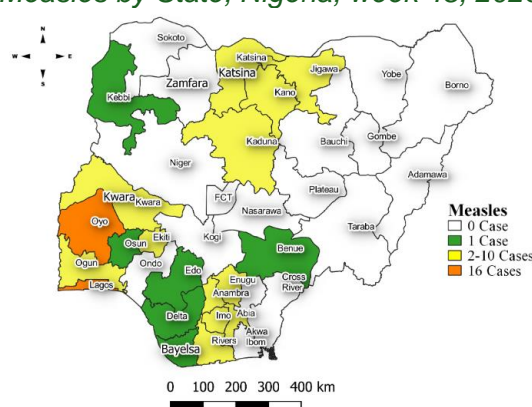


Figure 10: Location of suspected cases of Measles by State, Nigeria, week 48, 2023



Key points

- There were 91 suspected cases of Measles reported from 37 LGAs in 15 states. There were 16 laboratory confirmed cases and no death was recorded.

Actions

To date

- National Measles TWG is closely monitoring measles surveillance data and providing feedback to relevant agencies and development partners.
- Ongoing weekly surveillance and laboratory data harmonisation.
- Continue monthly measles surveillance data review.

Mpox

Week 48

Suspected cases	Confirmed cases	Deaths	Number of States and LGAs affected
20	4	0	State: 7 + FCT LGA: 14

Year to date (week 1 – 48)

Suspected cases		Confirmed cases		Deaths		CFR	
2022	2023	2022	2023	2022	2023	2022	2023
1905	1131	719	95	7	2	0.7%	0.2%

Figure 11: Number of suspected and confirmed cases of Mpox, Nigeria, weeks 1– 48, 2023.

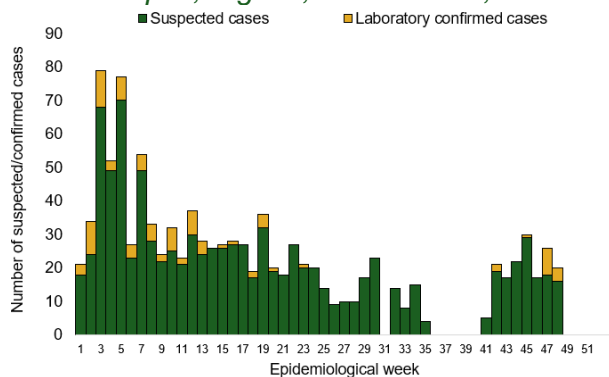
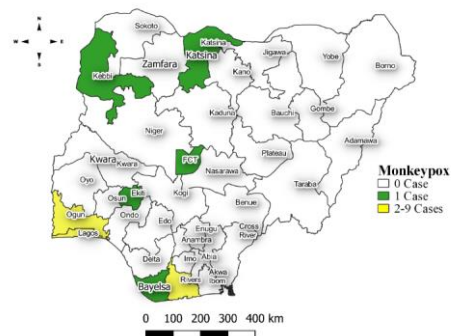


Figure 12: Location of suspected cases of Mpox by State, Nigeria, week 48, 2023



Key points

- There were 20 suspected cases of Mpox reported from 14 LGAs in seven states and FCT. There were four laboratory confirmed cases and no death was recorded.

Actions To date

- National Mpox Technical Working Group (TWG) is monitoring activities in all states.
- Providing offsite subnational support to resolve issues in reporting States
- Follow-up implementation of the approved Incident Action plan activities in collaboration with other pillars
- Continue to support effective sample management and transportation to the NRL from health facilities across the country

Acute Flaccid Paralysis (AFP)

Week 48

Suspected cases	Confirmed cases	Deaths	Number of States and LGAs affected
13	0	0	State: 9 + FCT LGA: 11

Year to date (week 1 – 48)

Suspected cases		Confirmed cases		Deaths		CFR	
2022	2023	2022	2023	2022	2023	2022	2023
7614	8044	0	0	7	0	0.09%	0%

Figure 13: Number of suspected and confirmed cases of AFP, Nigeria, weeks 1 – 48, 2023

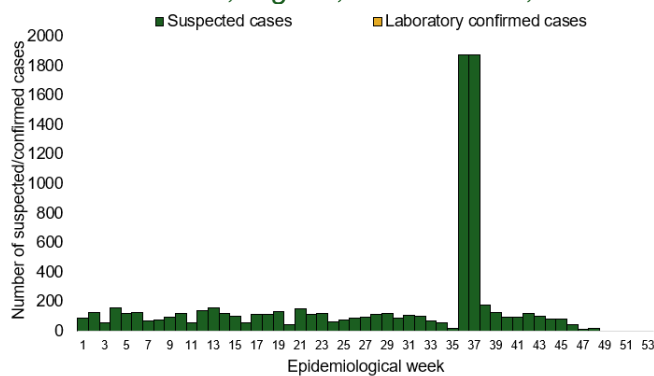
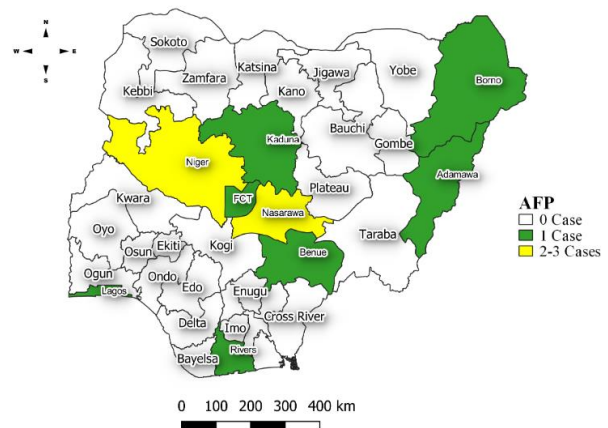


Figure 14: Location of suspected cases of AFP by State, Nigeria, week 48, 2023



Key points

- There were 13 suspected cases of AFP reported from 11 LGAs in nine states and FCT. There was no laboratory confirmed case and no death was recorded.

National Influenza Sentinel Surveillance

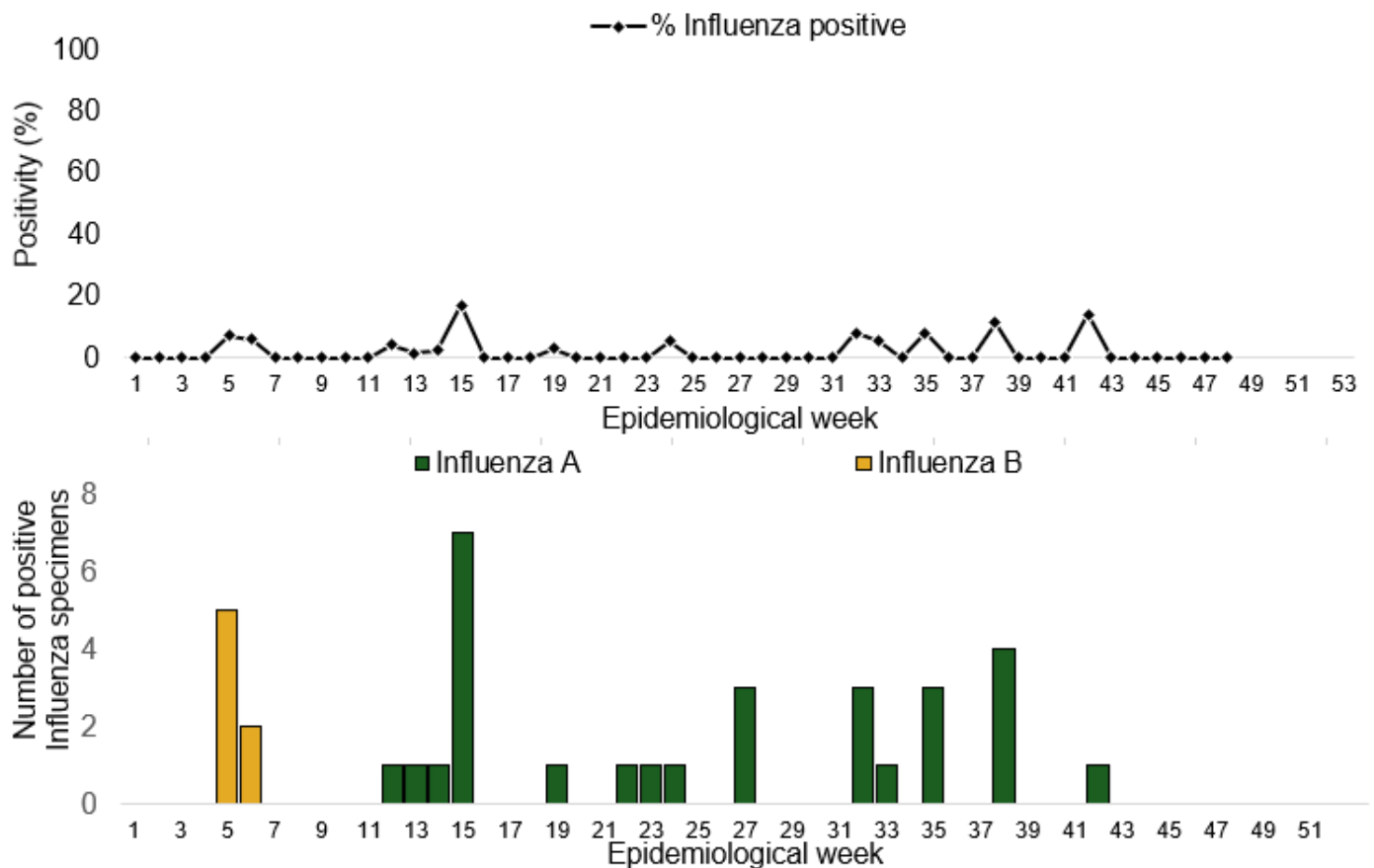
Year to date (week 1 – 48)

Suspected cases	Suspected ILI	Suspected SARI	Total Confirmed Cases	Confirmed cases by type	
				Influenza A	Influenza B
1346	926	423	40 (3.2%)	32(80%)	8(20%)

Week 48

Suspected Cases	Confirmed Cases	Confirmed Case by type	
		Influenza A	Influenza B
16	0	0	0

Figure 15: Number of influenza positive specimens by type and percentage positive by epidemiological week, 2023.



Coronavirus Disease (COVID-19)

Week 48

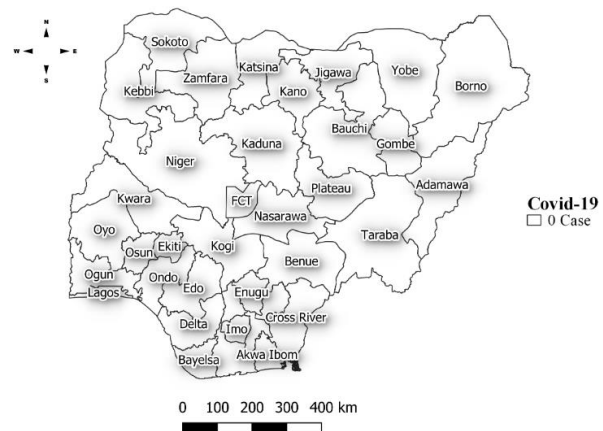
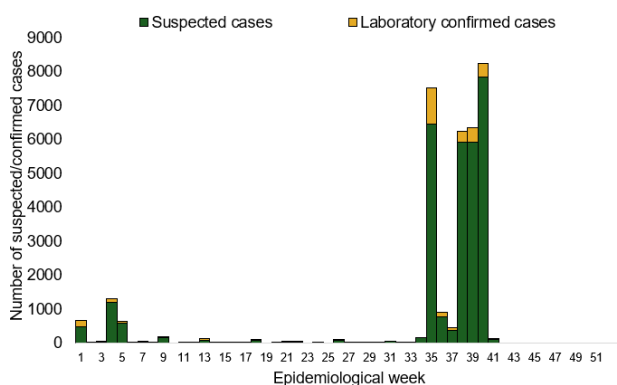
Suspected cases	Confirmed cases	Deaths	Number of States and LGAs affected
0	0	0	State: 0 LGA: 0

Year to date (Week 1- 48)

Test conducted	Confirmed cases	Deaths	Number of States and LGAs affected
64675	608	1	State: 30 + FCT LGA: 65

Figure 16: Epidemic curve of confirmed cases of COVID-19, Nigeria, week 48, 2023

Figure 17: Location of **confirmed** cases of COVID-19 by State, Nigeria, as at week 48, 2023



Key points

- There was no case reported for the week.

Actions

To date:

- Multi-sectoral Public Health Emergency Operation Centres (PHEOC) activated at the National and affected States
- Engagement meetings with state teams on the ongoing response, Sitrep reporting and Ag-RDT data harmonization, challenges, and way forward.
- Mainstreaming of COVID-19 response activities into routine public health interventions such as surveillance, risk communication, testing etc.
- Begin implementation of the testing strategy to increase RDT uptake
- Continue to monitor global trends on COVID-19.
- Enhance surveillance at points of entry.

Diphtheria

Week 48

Suspected cases	Confirmed cases	Deaths	Number of States and LGAs affected
454	354	4	State: 6 LGA: 31

Year to date (week 1 – 48)

Suspected cases		Confirmed cases		Deaths		CFR	
2022	2023	2022	2023	2022	2023	2022	2023
123	20746	24	12227	17	574	13.8%	2.8%

Figure 18: Number of suspected and confirmed cases of Diphtheria, Nigeria, weeks 1 – 48, 2023

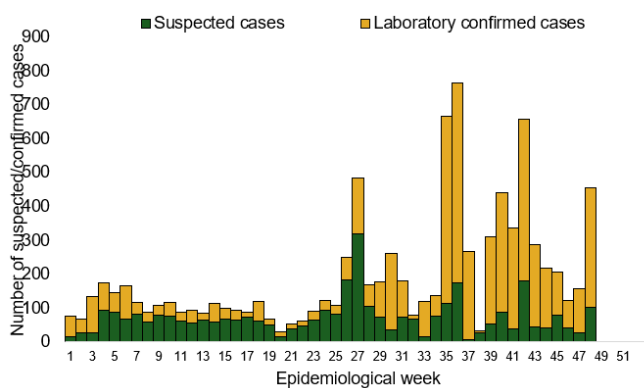
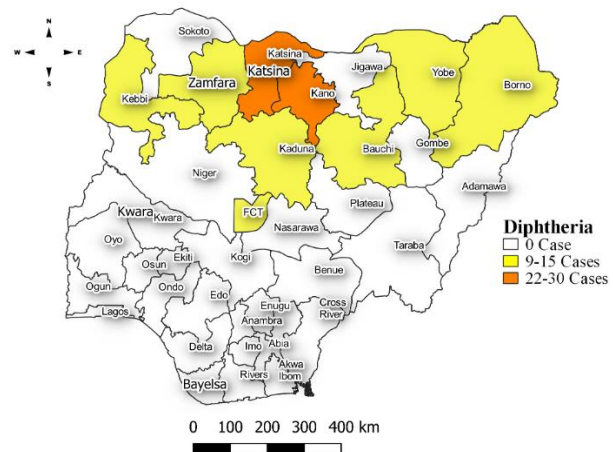


Figure 19: Location of suspected cases of Diphtheria by State, Nigeria, week 48, 2023



Key points

- There were 454 suspected cases of Diphtheria reported from 31 LGAs in six states. There were 354 confirmed cases, and four deaths were recorded.

Actions To date

- National Diphtheria Technical Working Group (TWG) is monitoring activities in all states.
- Harmonisation of surveillance and laboratory data from across states and laboratories.
- Provision of off-site surveillance support to affected States.

Event Based Surveillance (EBS)

Week 48

Call Summary per Call Hub as of week 48, 2023

Call Hubs	NCDC	GLO	Total
Successful Calls	157	0	157
Failed Calls	33	0	33

Number of Received/Resolved Health Declaration calls/emails for week 48.

Calls	Emails	WhatsApp/texts
0	3	4

Disease conditions and events of public health importance captured as signals for the reporting week 48, 2023.

S/N	Epi Week	Number of Signals Category by Epi Week																																																	
		1	2	3	4	5	6	7	8	9	10	11	12	13	14	15	16	17	18	19	20	21	22	23	24	25	26	27	28	29	30	31	32	33	34	35	36	37	38	39	40	41	42	43	44	45	46	47	48		
1	COVID19	0	0	0	0	0	0	0	0	0	0	0	0	0	0	0	0	0	0	0	0	0	0	0	0	0	0	0	0	0	0	0	0	0	0	0	0	0	0	0	0	0	0	0	0	0	0	0	0	0	
2	Lassa Fever	0	1	0	1	0	0	0	0	0	0	0	0	0	0	0	0	0	0	0	0	0	0	1	0	0	0	0	0	0	0	0	0	0	0	0	0	0	0	0	0	0	0	0	0	0	0	0	0	0	
3	Yellow Fever	0	0	0	0	0	0	0	0	0	0	0	0	0	0	0	0	0	0	0	0	0	0	0	0	0	0	0	0	0	0	0	0	0	0	0	0	0	1	0	0	0	0	0	0	0	0	0	0	0	
4	CSM	0	0	0	0	0	0	0	0	0	0	0	0	1	0	0	0	0	0	0	0	0	0	0	0	0	0	0	0	0	0	0	0	0	0	0	0	1	0	0	0	0	0	0	0	0	0	0	0	0	
5	Cholera	0	0	1	0	0	0	0	0	0	0	0	0	0	0	0	0	0	0	0	0	0	0	0	0	0	0	0	0	0	0	0	0	0	0	0	0	0	0	0	0	0	0	0	0	0	0	0	0	0	
6	Monkey Pox	1	0	0	0	0	0	0	0	0	0	0	0	0	0	0	0	0	0	0	0	0	0	0	0	0	0	0	0	0	0	0	0	0	0	0	0	0	0	0	0	0	0	0	0	0	0	0	0	0	
7	Measles & Rubella	0	0	0	0	0	0	0	0	0	0	0	0	0	0	0	0	0	0	0	0	0	0	0	0	0	0	0	0	0	0	0	0	0	0	0	0	0	1	0	0	0	0	0	0	0	0	0	0	0	
8	One Health Related Signals	0	0	0	0	0	0	0	0	0	0	0	0	0	0	0	0	0	0	0	0	0	0	0	0	0	0	0	0	0	0	0	0	0	0	0	0	0	0	0	0	0	0	0	0	0	0	0	0	0	
9	Unexplained cluster of illness/ death in humans	0	0	0	0	0	0	0	0	0	0	0	0	1	1	0	0	0	0	0	0	0	0	0	0	0	0	0	0	0	0	0	0	0	0	0	0	0	0	0	0	0	0	0	0	0	0	0	0	0	0
10	Disease or events of international or National Concern	0	0	0	0	0	0	0	0	0	0	0	0	0	0	0	0	0	0	0	0	0	0	0	0	0	0	0	0	0	0	0	0	0	0	0	0	0	0	0	0	0	0	0	0	0	0	0	0	0	0
11	Others	0	0	5	1	0	1	0	0	0	0	0	0	0	0	0	0	1	0	0	0	0	1	1	0	2	0	0	1	0	0	0	1	1	0	0	0	1	1	0	0	1	1	0	1	0	0	1	0	0	1
	TOTAL	1	1	6	1	0	1	0	0	0	0	0	2	1	0	0	0	0	0	0	0	1	2	0	2	0	0	0	0	0	0	1	1	0	0	4	1	0	1	0	1	1	0	1	0	0	1	0	1		

Key points

For the reporting week 48:

- 157 Calls were successfully routed to agents and answered.
- 33 calls not routed to agents (Failed call)
- 190 total number of calls (successful and failed)
- Percentage of failed to total inbound calls 17.4%.
- 1 signal picked and escalated (64 suspected cases of dengue fever in UDUTH Sokoto State)

For week 1 – 48

- 16,185 calls successfully routed to agents and answered
- 3,572 calls not routed to agents (Failed call)
- 19,757 total inbound calls recorded
- Percentage of failed to total inbound calls: 18.1%
- 31 Signals picked and escalated to 36 states and FCT

Categories of Calls

- General inquiries
- Hoax call and others
- Report of health conditions
- Inquiry on Lassa fever
- Inquiry on malaria vaccine
- Health Declaration form-related queries
- Inquiries on Diphtheria symptoms, treatment, and Vaccine
- Inquiries on yellow fever vaccine
- Inquiries on Lassa fever vaccine