



**Nigeria Centre for Disease Control and Prevention**

*Protecting the health of Nigerians*

## Weekly Epidemiological Report

Week 47: 20<sup>th</sup> – 26<sup>th</sup> November, 2023

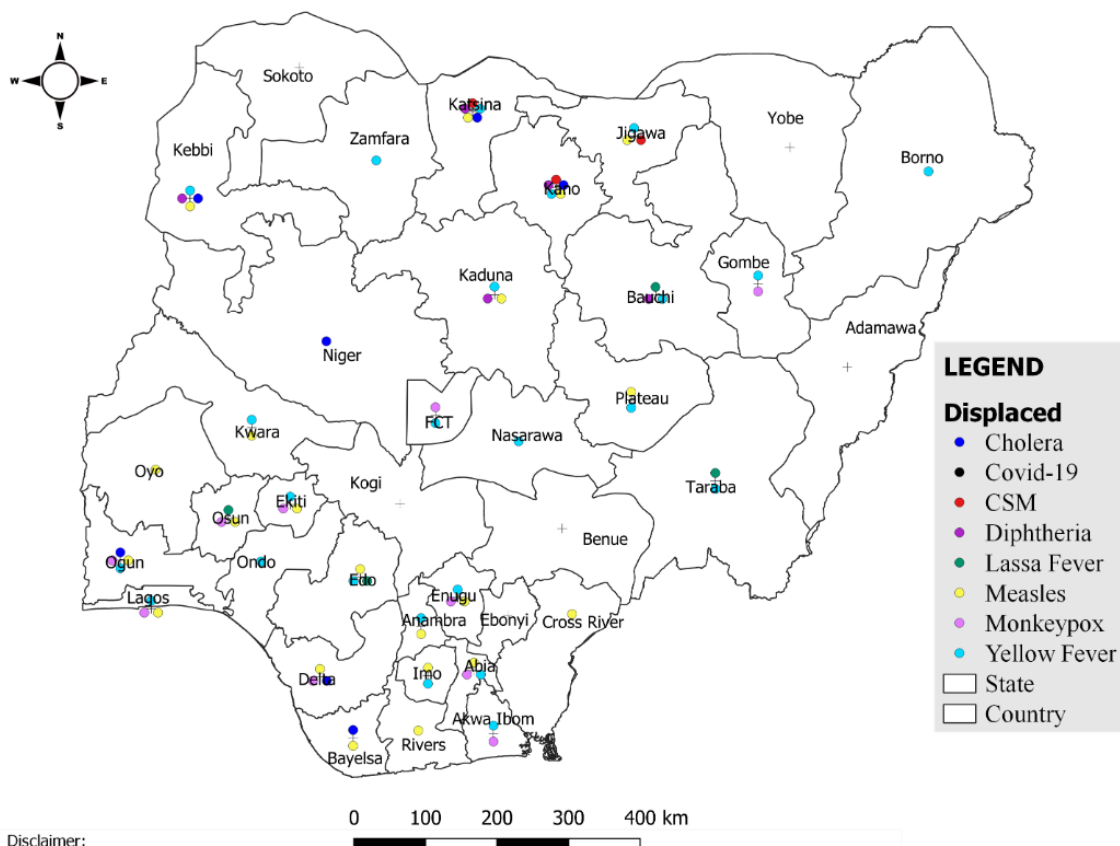
### Summary of Incidents

#### Ongoing incidents

2

Ongoing incidents are defined as confirmed cases where a national EOC or equivalent has been activated (Lassa Fever and Diphtheria)

Other incidents are those with confirmed cases for which EOC is not activated



Data Source: SITAware

## Summary

Week 47: 20<sup>th</sup> – 26<sup>th</sup> November, 2023

Lassa Fever <sup>1,2</sup>	Cerebrospinal Meningitis (CSM) <sup>1,4</sup>	Yellow Fever <sup>1,4</sup>
122 Suspected case(s)	5 Suspected case(s)	108 Suspected case(s)
11 Confirmed case(s)	1 Confirmed case(s)	0 Confirmed case(s)
3 Death(s)	1 Death(s)	0 Death(s)
Cholera <sup>1,4</sup>	Measles <sup>1,4</sup>	Mpox <sup>1,4</sup>
36 Suspected case(s)	141 Suspected case(s)	26 Suspected case(s)
1 Confirmed case(s)	18 Confirmed case(s)	8 Confirmed case(s)
8 Death(s)	0 Death(s)	0 Death(s)
Acute Flaccid Paralysis (AFP) <sup>1,4</sup>	National Sentinel influenza surveillance <sup>5</sup>	Coronavirus Disease <sup>1,</sup>
10 Suspected case(s)	36 Suspected case(s)	0 Suspected case(s)
0 Confirmed case(s)	0 Confirmed case(s)	0 Confirmed case(s)
		0 Death(s)
Diphtheria <sup>1,4</sup>		
155 Suspected case(s)		
128 Confirmed case(s)		
1 Death(s)		

1.

Information for this disease was retrieved from the Technical Working Group and Situation Reports

2. Case Fatality Rate (CFR) for this disease is reported for confirmed cases only
3. CFR for this disease is reported for total cases i.e. suspected + confirmed
4. Information for sentinel influenza was retrieved from the laboratory

## Lassa Fever

### Week 47

Suspected cases	Confirmed cases	Deaths	Number of States and LGAs affected
122	11	3	State: 11 + FCT LGA: 17

### Year to date (week 1 – 47)

Suspected cases		Confirmed cases		Deaths		CFR	
2022	2023	2022	2023	2022	2023	2022	2023
7591	8423	993	1154	184	197	18.5%	17.1%

Figure 1: Number of suspected and confirmed cases of Lassa Fever, Nigeria, Weeks 1 – 47, 2023

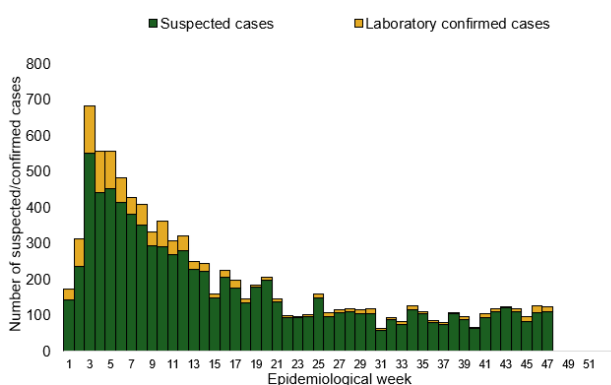
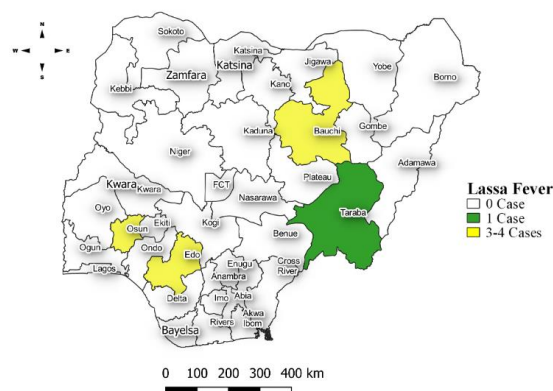


Figure 2: Location of **confirmed** cases of Lassa Fever by State, Nigeria, week 47, 2023



## Key points

- There were 122 suspected cases of Lassa Fever reported from 17 LGAs in 11 states and FCT. There were 11 laboratory confirmed cases reported from seven LGAs in four states and three deaths were recorded.

## Actions

### To date:

- National Lassa fever multi-partner, multi-sectoral Technical Working Group (TWG) continues to coordinate the response activities at all levels
- Activation of the Lassa Fever EOC
- Deployed NRRT to 6 states – Bauchi, Benue, Ebonyi, Edo, Ondo & Taraba
- Participated in National Enhanced Situational Awareness (ESA) Project Implementation Workshop
- Conducted the first Lassa fever webinar series
- Utilizing LISTEN for Lassa Fever Control
- Identify key activities for partners to support in preparation for the upcoming breakout season

## Cerebrospinal Meningitis (CSM)

### Week 47

Suspected cases	Confirmed cases	Deaths	Number of States and LGAs affected
5	1	1	State: 3 LGA: 3

### Year to date (week 1 – 47)

Suspected cases		Confirmed cases		Deaths		CFR	
2022	2023	2022	2023	2022	2023	2022	2023
837	2515	0	316	103	159	12.3%	6.3%

Figure 3: Number of suspected and confirmed cases of CSM, Nigeria, weeks 1 – 47, 2023

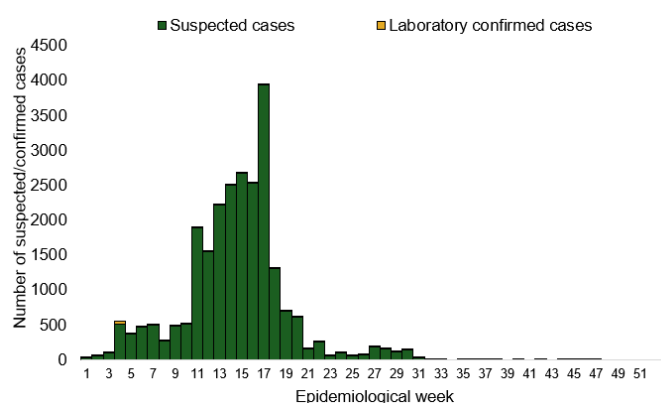
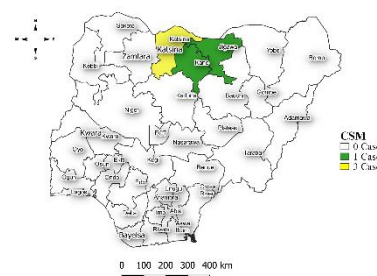


Figure 4: Location of suspected cases of CSM by State, Nigeria, week 47, 2023



## Key points

- There were five cases of Cerebrospinal meningitis (CSM) reported from three LGAs in three states. There was one laboratory confirmed case and one death was reported.

## Actions

### To date:

- National CSM TWG meets weekly to review reports from states and plan appropriately.
- Monitoring of epidemiological trend to guide plans for reactive vaccination campaigns,
- Implementation of CSM reactive vaccination campaign in high burden LGAs/Wards in Jigawa state led by NPHCDA.

## Yellow Fever

### Week 47

Suspected cases	Confirmed cases	Deaths	Number of States and LGAs affected
108	0	0	State: 23 + FCT LGA: 31

### Year to date (week 1 – 47)

Suspected cases		Confirmed cases		Deaths		CFR	
2022	2023	2022	2023	2022	2023	2022	2023
1951	2838	0	21	10	9	0.5%	0.3%

Figure 5: Number of suspected and confirmed cases of Yellow Fever, Nigeria, weeks 1 – 47, 2023

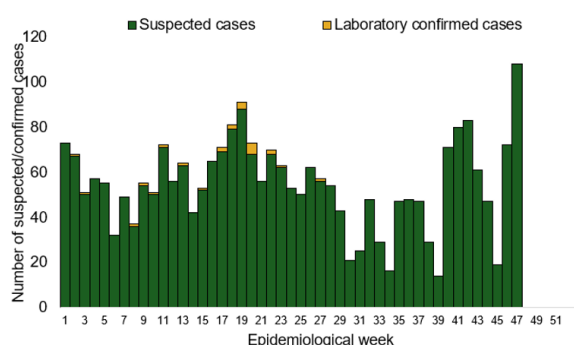
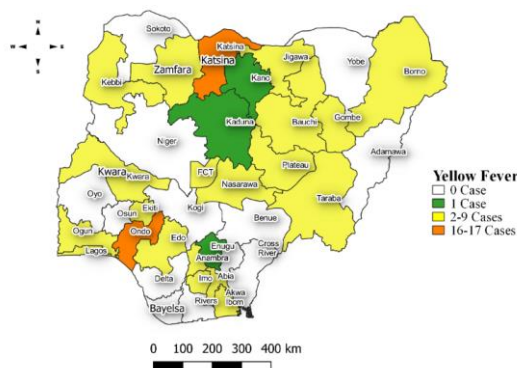


Figure 6: Location of suspected cases of Yellow Fever by States, Nigeria, week 47, 2023



## Key points

- There were 108 suspected cases of Yellow Fever (YF) reported from 31 LGAs in 23 states and FCT. There was no laboratory confirmed case and one death was recorded.

## Actions

### To date:

- National YF multi-partner Technical Working Group (TWG) continues to coordinate activities across states.
- Daily monitoring and analysis of surveillance data across the country to guide response activities.
- National YF multi-partner Technical Working Group (TWG) continues to coordinate activities across states.
- Daily monitoring and analysis of surveillance data across the country to guide response activities.
- Supported implementation of yellow fever Preventive Mass Vaccination Campaign (PMVC) phase 7, 2023 in Jigawa, and some LGAs in Borno State
- Operationalization of Yellow fever Reference Laboratory at University of Maiduguri Teaching Hospital (UMTH) Maiduguri, Borno State

## Cholera

### Week 47

Suspected cases	Confirmed cases	Deaths	Number of States and LGAs affected
36	1	8	State: 7 LGA: 7

### Year to date (week 1 – 47)

Suspected cases		Confirmed cases		Deaths		CFR	
2022	2023	2022	2023	2022	2023	2022	2023
16805	3631	441	238	451	124	2.7%	3.4%

Figure 7: Number of suspected and confirmed cases of Cholera, Nigeria, weeks 1 – 47, 2023

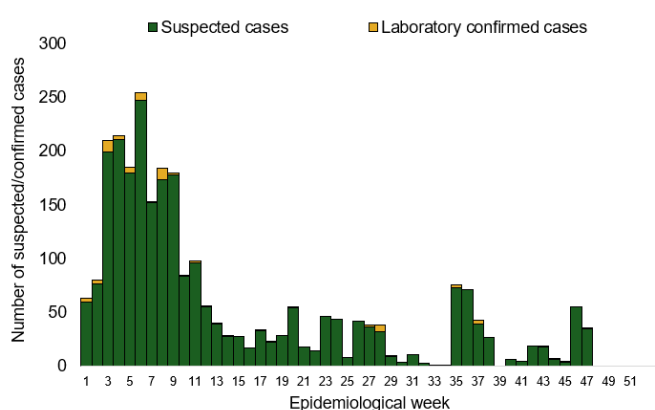
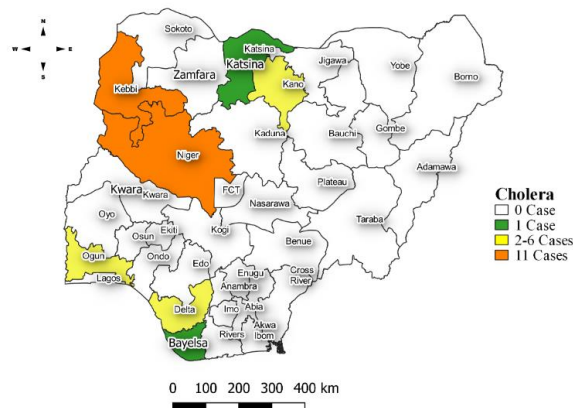


Figure 8: Location of suspected cases of Cholera by State, Nigeria, week 47, 2023



## Key points

- There were 36 suspected cases of Cholera reported from seven LGAs in seven states. There was one laboratory confirmed case and one death was recorded

## Actions

### To date

- National Cholera Multi-Sectoral Technical Working Group (TWG) is monitoring all states and supporting affected states.
- Ongoing surveillance in all states through the routine Integrated Disease Surveillance and Response (IDSR) and Event Based Surveillance (EBS).
- Continuous construction of sanitation and hygiene facilities with boreholes in cholera hotspots • Conducted WASH Sector review workshop.
- Cholera surveillance evaluation across states.
- Continue advocacy to State Governments to increase funding in WASH infrastructure.
- Continue review of the National Cholera Plan.

## Measles

### Week 47

Suspected cases	Confirmed cases	Deaths	Number of States and LGAs affected
141	18	0	State: 18 LGA: 72

### Year to date (week 1 – 47)

Suspected cases		Confirmed cases		Deaths		CFR	
2022	2023	2022	2023	2022	2023	2022	2023
57801	19047	3486	1754	314	81	0.5%	0.4%

Figure 9: Number of suspected and confirmed cases of Measles, Nigeria, weeks 1 – 47, 2023.

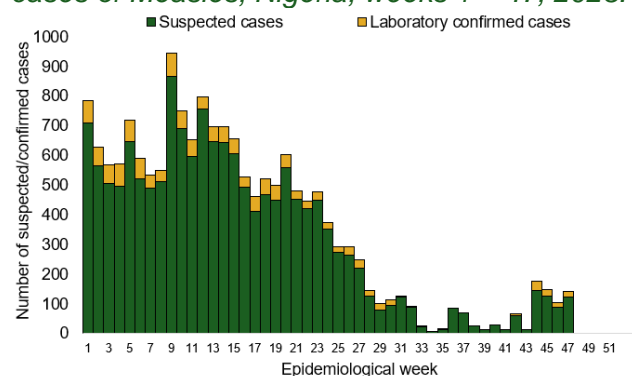
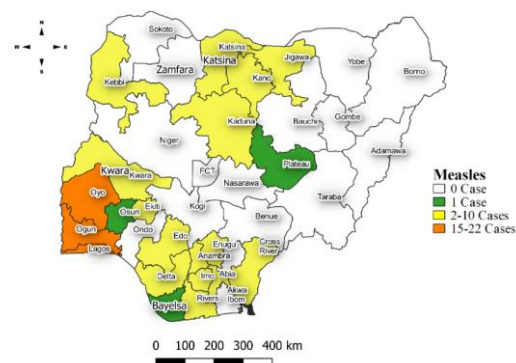


Figure 10: Location of suspected cases of Measles by State, Nigeria, week 47, 2023



### Key points

- There were 141 suspected cases of Measles reported from 72 LGAs in 18 states. There were 18 laboratory confirmed cases and no death was recorded.

### Actions

#### To date

- National Measles TWG is closely monitoring measles surveillance data and providing feedback to relevant agencies and development partners.
- Ongoing weekly surveillance and laboratory data harmonisation.
- Continue monthly measles surveillance data review.



## Mpox

### Week 47

Suspected cases	Confirmed cases	Deaths	Number of States and LGAs affected
26	8	0	State: 9 + FCT LGA: 20

### Year to date (week 1 – 47)

Suspected cases		Confirmed cases		Deaths		CFR	
2022	2023	2022	2023	2022	2023	2022	2023
1856	1111	696	91	7	2	0.4%	0.2%

Figure 11: Number of suspected and confirmed cases of Mpox, Nigeria, weeks 1– 47, 2023.

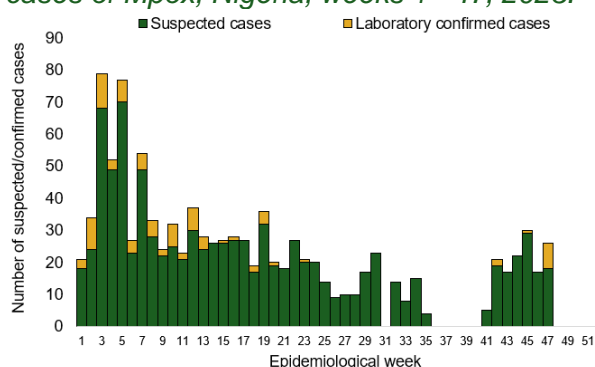
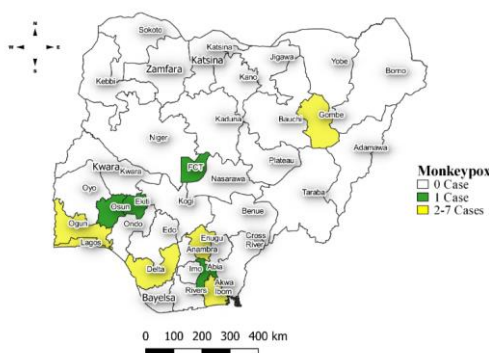


Figure 12: Location of suspected cases of Mpox by State, Nigeria, week 47, 2023



### Key points

- There were 26 suspected cases of Mpox reported from 20 LGAs in nine states and FCT. There were eight laboratory confirmed cases and no death was recorded.

### Actions To date

- National Monkeypox Technical Working Group (TWG) is monitoring activities in all states.
- Providing offsite subnational support to resolve issues in reporting States
- Continue to follow-up implementation of the approved Incident Action plan activities in collaboration with other pillars
- Continue to support effective sample management and transportation to the NRL from health facilities across the country



## Acute Flaccid Paralysis (AFP)

### Week 47

Suspected cases	Confirmed cases	Deaths	Number of States and LGAs affected
10	0	0	State: 9 LGA: 9

### Year to date (week 1 – 47)

Suspected cases		Confirmed cases		Deaths		CFR	
2022	2023	2022	2023	2022	2023	2022	2023
7352	8031	0	0	7	0	0.1%	0%

Figure 13: Number of suspected and confirmed cases of AFP, Nigeria, weeks 1 – 47, 2023

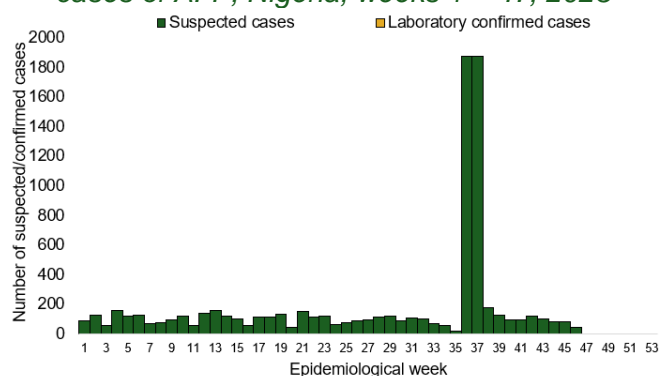
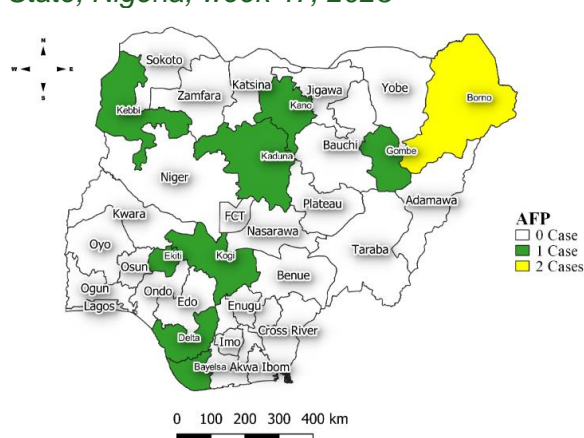


Figure 14: Location of suspected cases of AFP by State, Nigeria, week 47, 2023



### Key points

- There were 10 suspected cases of AFP reported from nine LGAs in nine states. There was no laboratory confirmed case and no death was recorded.

National Influenza Sentinel Surveillance

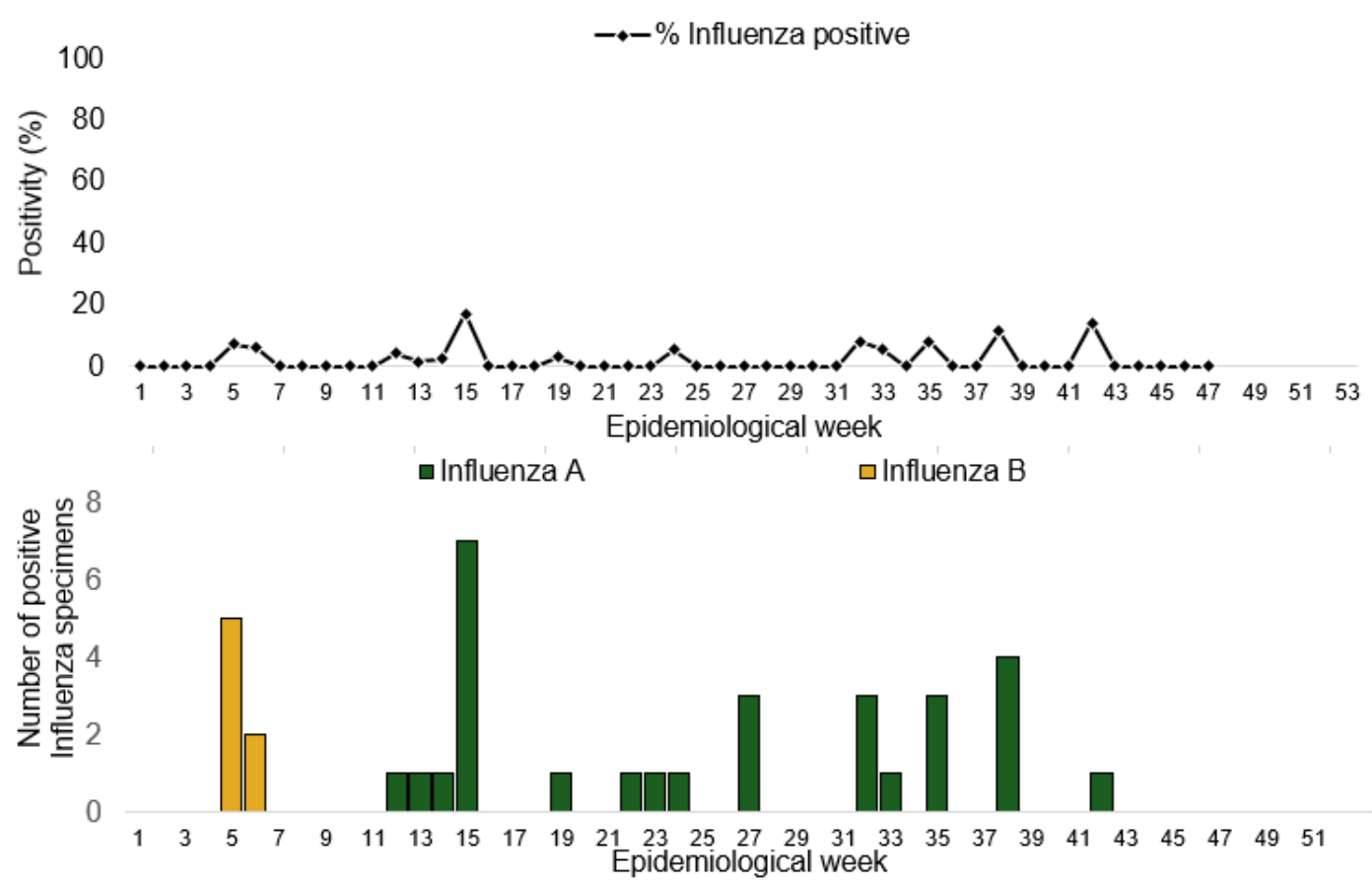
Year to date (week 1 – 47)

Suspected cases	Suspected ILI	Suspected SARI	Total Confirmed Cases	Confirmed cases by type	
1298	886	415	40 (3.2%)	Influenza A	Influenza B
				32(80%)	8(20%)

Week 47

Suspected Cases	Confirmed Cases	Confirmed Case by type	
		Influenza A	Influenza B
36	0	0	0

Figure 15: Number of influenza positive specimens by type and percentage positive by epidemiological week, 2023.



## Coronavirus Disease (COVID-19)

### Week 47

Suspected cases	Confirmed cases	Deaths	Number of States and LGAs affected
0	0	0	State: 0 LGA: 0

### Year to date (Week 1- 47)

Test conducted	Confirmed cases	Deaths	Number of States and LGAs affected
64675	608	1	State: 30 + FCT LGA: 65

Figure 16: Epidemic curve of confirmed cases of COVID-19, Nigeria, week 47, 2023

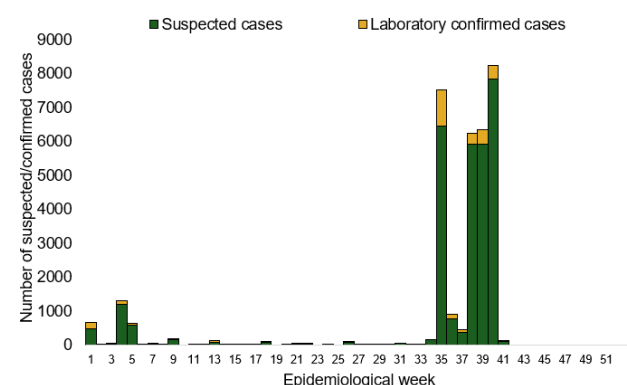
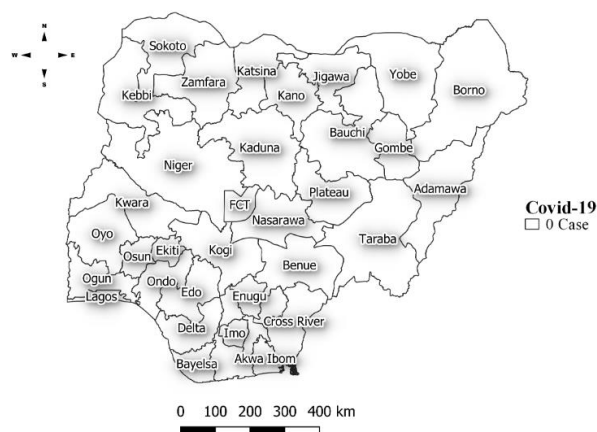


Figure 17: Location of **confirmed** cases of COVID-19 by State, Nigeria, as at week 47, 2023



### Key points

- There was no case reported for the week.

### Actions

#### To date:

- Multi-sectoral Public Health Emergency Operation Centres (PHEOC) activated at the National and affected States
- Engagement meetings with state teams on the ongoing response, Sitrep reporting and Ag-RDT data harmonization, challenges, and way forward.
- Mainstreaming of COVID-19 response activities into routine public health interventions such as surveillance, risk communication, testing etc.
- Begin implementation of the testing strategy to increase RDT uptake
- Continue to monitor global trends on COVID-19.
- Enhance surveillance at points of entry.

## Diphtheria

### Week 47

Suspected cases	Confirmed cases	Deaths	Number of States and LGAs affected
155	128	1	State: 3 LGA: 16

### Year to date (week 1 – 47)

Suspected cases		Confirmed cases		Deaths		CFR	
2022	2023	2022	2023	2022	2023	2022	2023
123	19558	24	12021	17	572	13.8%	2.8%

Figure 18: Number of suspected and confirmed cases of Diphtheria, Nigeria, weeks 1 – 47, 2023

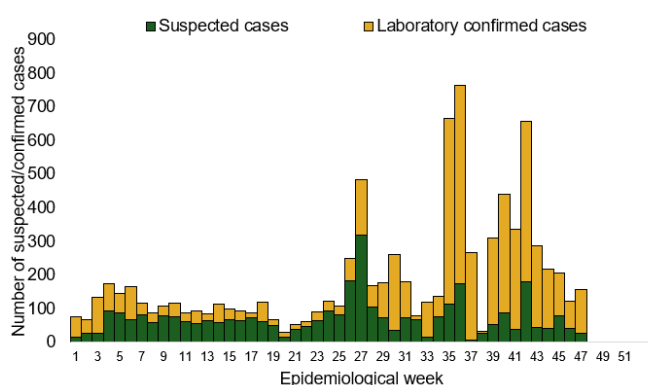
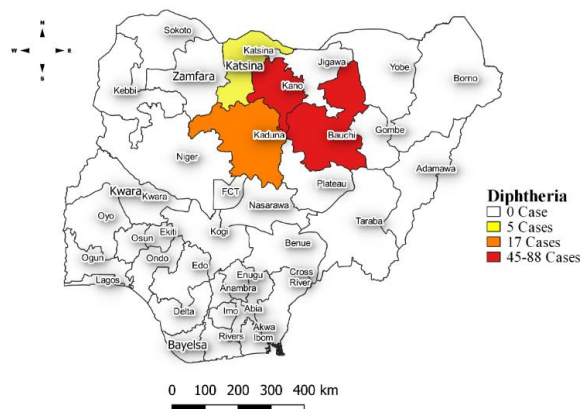


Figure 19: Location of suspected cases of Diphtheria by State, Nigeria, week 47, 2023



### Key points

- There were 155 suspected cases of Diphtheria reported from 16 LGAs in three states. There were 128 confirmed cases, and one death was recorded.

### Actions To date

- National Diphtheria Technical Working Group (TWG) is monitoring activities in all states.
- Harmonisation of surveillance and laboratory data from across states and laboratories.
- Provision of off-site surveillance support to affected States.

## Event Based Surveillance (EBS)

### Week 47

#### Call Summary per Call Hub as of week 47, 2023

Call Hubs	NCDC	GLO	Total
Successful Calls	141	0	141
Failed Calls	7	0	1

#### Number of Received/Resolved Health Declaration calls/emails for week 47.

Calls	Emails	WhatsApp/texts
1	3	4

#### Disease conditions and events of public health importance captured as signals for the reporting week 47, 2023.

Number of Signals Category by Epi Week																																																		
S/N	Epi Week	1	2	3	4	5	6	7	8	9	10	11	12	13	14	15	16	17	18	19	20	21	22	23	24	25	26	27	28	29	30	31	32	33	34	35	36	37	38	39	40	41	42	43	44	45	46			
1	COVID19	0	0	0	0	0	0	0	0	0	0	0	0	0	0	0	0	0	0	0	0	0	0	0	0	0	0	0	0	0	0	0	0	0	0	0	0	0	0	0	0	0	0	0	0	0	0	0		
2	Lassa Fever	0	1	0	1	0	0	0	0	0	0	0	0	0	0	0	0	0	0	0	0	0	1	0	0	0	0	0	0	0	0	0	0	0	0	0	0	0	0	0	0	0	0	0	0	0	0	0	0	
3	Yellow Fever	0	0	0	0	0	0	0	0	0	0	0	0	0	0	0	0	0	0	0	0	0	0	0	0	0	0	0	0	0	0	0	0	0	0	0	1	0	0	0	0	0	0	0	0	0	0	0	0	
4	CSM	0	0	0	0	0	0	0	0	0	0	0	0	1	0	0	0	0	0	0	0	0	0	0	0	0	0	0	0	0	0	0	0	0	0	0	1	0	0	0	0	0	0	0	0	0	0	0	0	
5	Cholera	0	0	1	0	0	0	0	0	0	0	0	0	0	0	0	0	0	0	0	0	0	0	0	0	0	0	0	0	0	0	0	0	0	0	0	0	0	0	0	0	0	0	0	0	0	0	0	0	
6	Monkey Pox	1	0	0	0	0	0	0	0	0	0	0	0	0	0	0	0	0	0	0	0	0	0	0	0	0	0	0	0	0	0	0	0	0	0	0	0	0	0	0	0	0	0	0	0	0	0	0	0	
7	Measles & Rubella	0	0	0	0	0	0	0	0	0	0	0	0	0	0	0	0	0	0	0	0	0	0	0	0	0	0	0	0	0	0	0	0	0	0	0	1	0	0	0	0	0	0	0	0	0	0	0	0	
8	One Health Related Signals	0	0	0	0	0	0	0	0	0	0	0	0	0	0	0	0	0	0	0	0	0	0	0	0	0	0	0	0	0	0	0	0	0	0	0	0	0	0	0	0	0	0	0	0	0	0	0	0	0
9	Unexplained cluster of illness/ death in humans	0	0	0	0	0	0	0	0	0	0	0	0	1	1	0	0	0	0	0	0	0	0	0	0	0	0	0	0	0	0	0	0	0	0	0	0	0	0	0	0	0	0	0	0	0	0	0	0	0
10	Disease or events of international or National Concern	0	0	0	0	0	0	0	0	0	0	0	0	0	0	0	0	0	0	0	0	0	0	0	0	0	0	0	0	0	0	0	0	0	0	0	0	0	0	0	0	0	0	0	0	0	0	0	0	0
11	Others	0	0	5	1	0	1	0	0	0	0	0	0	0	0	0	0	1	0	0	0	1	1	0	2	0	0	1	0	0	0	1	1	0	0	0	1	1	0	1	0	1	0	0	0	1	0	0	0	0
	TOTAL	1	1	6	1	0	1	0	0	0	0	0	2	1	0	0	0	0	0	0	0	1	2	0	2	0	0	0	0	0	0	1	1	0	0	4	1	0	1	0	1	1	0	0	1	0	0	0		

For the reporting week 47:

- 141 Calls were successfully routed to agents and answered.
- 1 call not routed to agents (Failed call)
- 142 total number of calls (successful and failed)
- Percentage of failed to total inbound calls 0.7%.
- 0 signal picked and escalated (suspected diphtheria case in Yobe State)

For week 1 – 47

- 16,030 calls successfully routed to agents and answered
- 3,539 calls not routed to agents (Failed call)
- 19,569 total inbound calls recorded
- Percentage of failed to total inbound calls: 18.1%
- 30 Signals picked and escalated to 36 states and FCT

Categories of Calls

- General inquiries
- Hoax call and others
- Report of health conditions
- Inquiry on Lassa fever
- Inquiry on malaria vaccine
- Health Declaration form-related queries
- Inquiries on Diphtheria symptoms, treatment, and Vaccine
- Inquiries on yellow fever vaccine
- Inquiries on Lassa fever vaccine