



Nigeria Centre for Disease Control and Prevention

Protecting the health of Nigerians

Weekly Epidemiological Report

Week 44: 30th October – 5th November, 2023

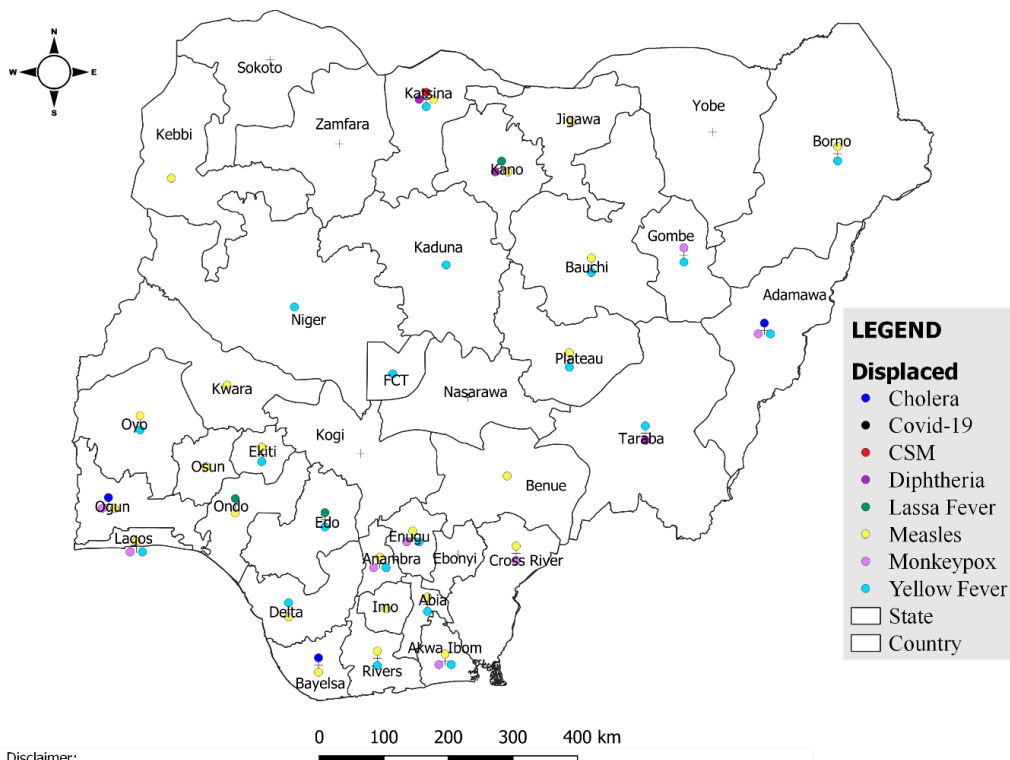
Summary of Incidents

Ongoing incidents

1

Ongoing incidents are defined as confirmed cases where a national EOC or equivalent has been activated

Other incidents are those with confirmed cases for which EOC is not activated



Data Source: SITAware

Summary

Week 43: 30th October – 5th November, 2023

Lassa Fever _{1,2}	Cerebrospinal Meningitis (CSM) _{1,4}	Yellow Fever _{1,4}
117 Suspected case(s)	4 Suspected case(s)	47 Suspected case(s)
8 Confirmed case(s)	0 Confirmed case(s)	0 Confirmed case(s)
0 Death(s)	0 Death(s)	0 Death(s)
Cholera _{1,4}	Measles _{1,4}	Mpox _{1,4}
7 Suspected case(s)	175 Suspected case(s)	22 Suspected case(s)
1 Confirmed case(s)	30 Confirmed case(s)	0 Confirmed case(s)
0 Death(s)	0 Death(s)	0 Death(s)
Acute Flaccid Paralysis (AFP) _{1,4}	National Sentinel influenza surveillance ₅	Coronavirus Disease _{1,}
81 Suspected case(s)	0 Suspected case(s)	0 Suspected case(s)
0 Confirmed case(s)	0 Confirmed case(s)	0 Confirmed case(s)
		0 Death(s)
Diphtheria _{1,4}		
217 Suspected case(s)		
178 Confirmed case(s)		
1 Death(s)		

1. Information for this disease was retrieved from the Technical Working Group and Situation Reports
2. Case Fatality Rate (CFR) for this disease is reported for confirmed cases only
3. CFR for this disease is reported for total cases i.e. suspected + confirmed
4. Information for sentinel influenza was retrieved from the laboratory

Lassa Fever

Week 44

Suspected cases	Confirmed cases	Deaths	Number of States and LGAs affected
117	8	0	State: 12 + FCT LGA: 21

Year to date (week 1 – 44)

Suspected cases		Confirmed cases		Deaths		CFR	
2022	2023	2022	2023	2022	2023	2022	2023
7294	8084	975	1115	182	188	18.7%	16.7%

Figure 1: Number of suspected and confirmed cases of Lassa Fever, Nigeria, Weeks 1 – 44, 2023

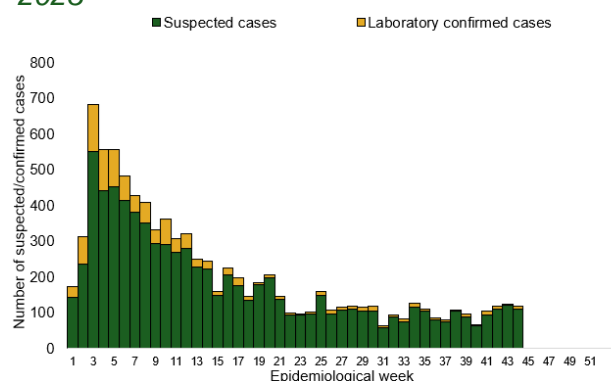
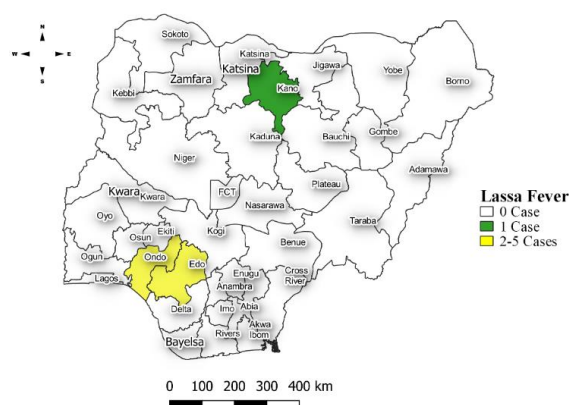


Figure 2: Location of confirmed cases of Lassa Fever by State, Nigeria, week 44, 2023



Key points

- There were 117 suspected cases of Lassa Fever reported from 21 LGAs in 12 states and FCT. There were eight laboratory confirmed cases reported from six LGAs in three states and no death was recorded.

Actions

To date:

- National Lassa fever multi-partner, multi-sectoral Technical Working Group (TWG) continues to coordinate the response activities at all levels
- Activation of the Lassa Fever EOC
- Deployed NRRT to 6 states – Bauchi, Benue, Ebonyi, Edo, Ondo & Taraba
- Coordinated a two-day LF Colloquium & workshop with support from UCL and Jhpiego
- Piloting of Epidemic Ready Primary Health Care (ERPHC) program in two states
- Utilizing LISTEN for Lassa Fever Control

- Identify key activities for partners to support in preparation for the upcoming breakout season

Cerebrospinal Meningitis (CSM)

Week 44

Suspected cases	Confirmed cases	Deaths	Number of States and LGAs affected
4	0	0	State: 1 LGA: 2

Year to date (week 1 – 44)

Suspected cases		Confirmed cases		Deaths		CFR	
2022	2023	2022	2023	2022	2023	2022	2023
801	2507	0	315	101	158	12.6%	6.3%

Figure 3: Number of suspected and confirmed cases of CSM, Nigeria, weeks 1 – 44, 2023

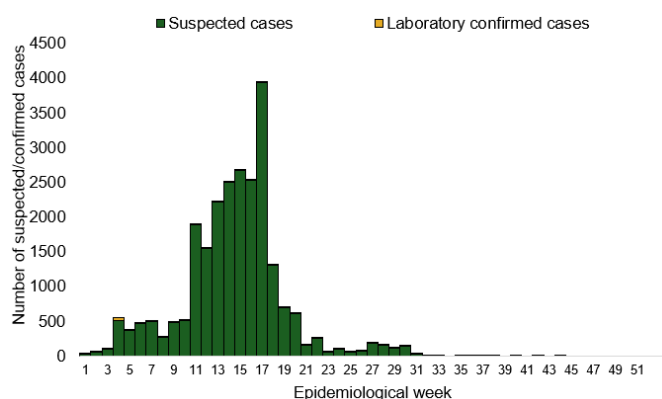
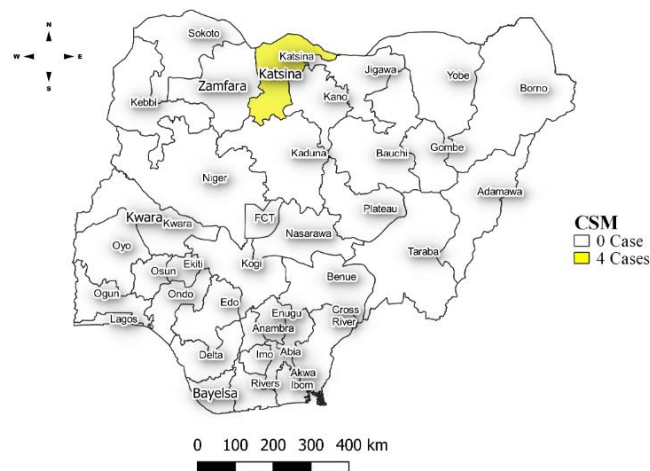


Figure 4: Location of suspected cases of CSM by State, Nigeria, week 44, 2023



Key points

- There were four cases of Cerebrospinal meningitis (CSM) reported from two LGAs in Katsina state. There was no laboratory confirmed case and no death was reported.

Actions

To date:

- National CSM TWG meets weekly to review reports from states and plan appropriately.
- Monitoring of epidemiological trend to guide plans for reactive vaccination campaigns,
- Implementation of CSM reactive vaccination campaign in high burden LGAs/Wards in Jigawa state led by NPHCDA.

Planned:

- Enhanced surveillance (active case search and contact tracing) in affected states and LGAs,
- Deployment of SORMAS application to secondary and tertiary HFs.

Yellow Fever

Week 44

Suspected cases	Confirmed cases	Deaths	Number of States and LGAs affected
47	0	0	State: 19 + FCT LGA: 25

Year to date (week 1 – 44)

Suspected cases		Confirmed cases		Deaths		CFR	
2022	2023	2022	2023	2022	2023	2022	2023
1781	2423	0	24	10	10	0.6%	0.4%

Figure 5: Number of suspected and confirmed cases of Yellow Fever, Nigeria, weeks 1 – 44, 2023

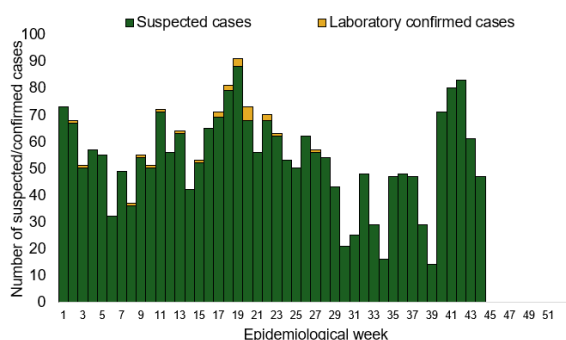
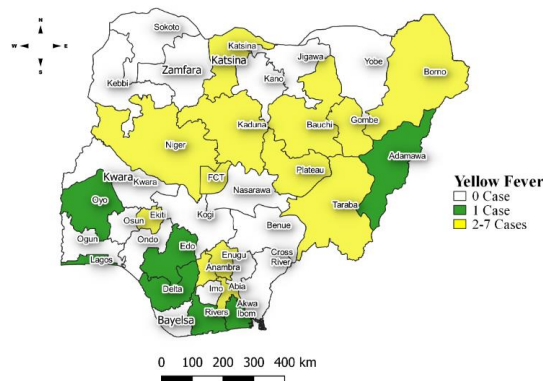


Figure 6: Location of suspected cases of Yellow Fever by States, Nigeria, week 44, 2023



Key points

- There were 47 suspected cases of Yellow Fever (YF) reported from 25 LGAs in 19 states and FCT. There was no laboratory confirmed case and one death was recorded.

Actions

To date:

- National YF multi-partner Technical Working Group (TWG) continues to coordinate activities across states.
- Daily monitoring and analysis of surveillance data across the country to guide response activities.
- National YF multi-partner Technical Working Group (TWG) continues to coordinate activities across states.
- Daily monitoring and analysis of surveillance data across the country to guide response activities.
- Supported implementation of yellow fever Preventive Mass Vaccination Campaign (PMVC) phase 7, 2023 in Jigawa, and some LGAs in Borno State
- Operationalization of Yellow fever Reference Laboratory at University of Maiduguri Teaching

Cholera

Week 44

Suspected cases	Confirmed cases	Deaths	Number of States and LGAs affected
7	1	0	State: 3 LGA: 4

Year to date (week 1 – 44)

Suspected cases		Confirmed cases		Deaths		CFR	
2022	2023	2022	2023	2022	2023	2022	2023
15356	3535	424	237	398	111	2.6%	3.1%

Figure 7: Number of suspected and confirmed cases of Cholera, Nigeria, weeks 1 – 44, 2023

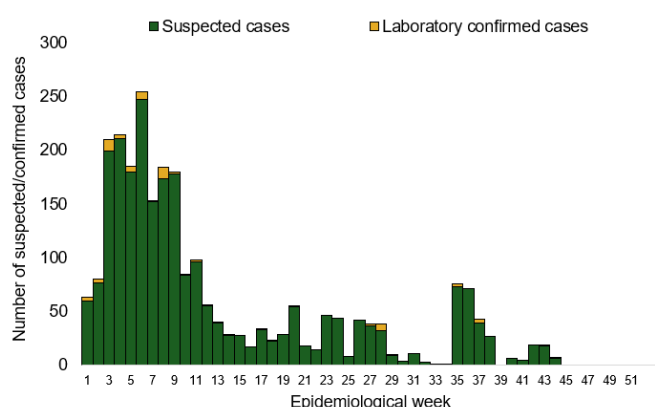
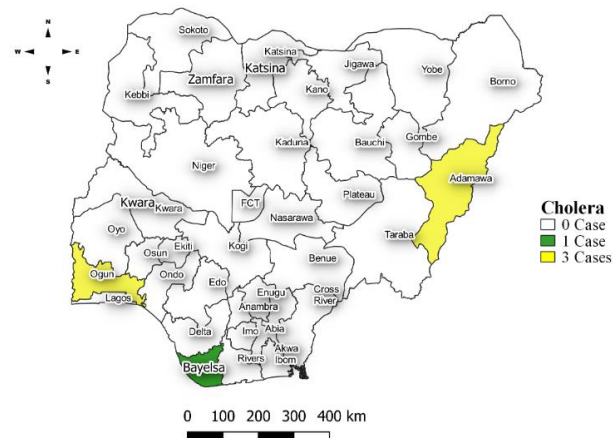


Figure 8: Location of suspected cases of Cholera by State, Nigeria, week 44, 2023



Key points

- There were seven suspected cases of Cholera reported from four LGAs in three states. There was one laboratory confirmed case and no death was recorded

Actions

To date

- National Cholera Multi-Sectoral Technical Working Group (TWG) is monitoring all states and supporting affected states.
- Ongoing surveillance in all states through the routine Integrated Disease Surveillance and Response (IDSR) and Event Based Surveillance (EBS).
- Continuous construction of sanitation and hygiene facilities with boreholes in cholera hotspots • Conducted WASH Sector review workshop.
- Cholera surveillance evaluation across states.
- Continue advocacy to State Governments to increase funding in WASH infrastructure.

- Continue review of the National Cholera Plan.

Measles

Week 44

Suspected cases	Confirmed cases	Deaths	Number of States and LGAs affected
175	30	0	State: 15 LGA: 67

Year to date (week 1 – 44)

Suspected cases		Confirmed cases		Deaths		CFR	
2022	2023	2022	2023	2022	2023	2022	2023
56977	18653	3486	1699	314	79	0.6%	0.4%

Figure 9: Number of suspected and confirmed cases of Measles, Nigeria, weeks 1 – 44, 2023.

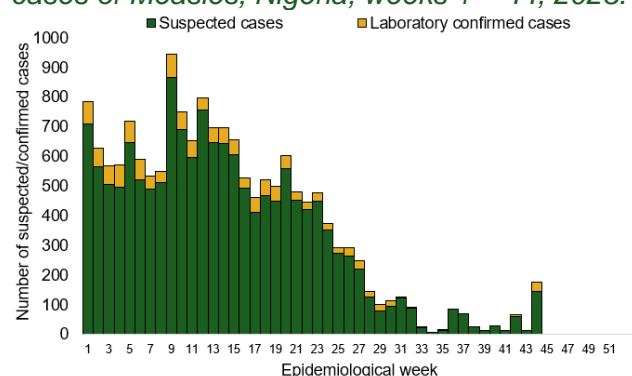
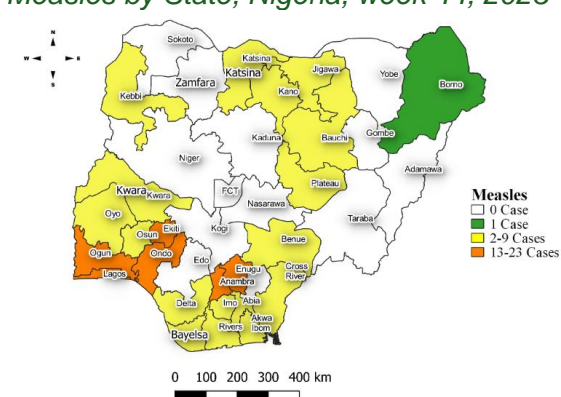


Figure 10: Location of suspected cases of Measles by State, Nigeria, week 44, 2023



Key points

- There were 175 suspected cases of Measles reported from 67 LGAs in 15 states. There were 30 laboratory confirmed cases and no death was recorded.

Actions

To date

- National Measles TWG is closely monitoring measles surveillance data and providing feedback to relevant agencies and development partners.
- Ongoing weekly surveillance and laboratory data harmonisation.
- Continue monthly measles surveillance data review.

Monkeypox

Week 44

Suspected cases	Confirmed cases	Deaths	Number of States and LGAs affected
22	0	0	State: 8 LGA: 13

Year to date (week 1 – 44)

Suspected cases		Confirmed cases		Deaths		CFR	
2022	2023	2022	2023	2022	2023	2022	2023
1620	1037	613	82	7	2	1.2%	2.4%

Figure 11: Number of suspected and confirmed cases of Mpox, Nigeria, weeks 1– 44, 2023.

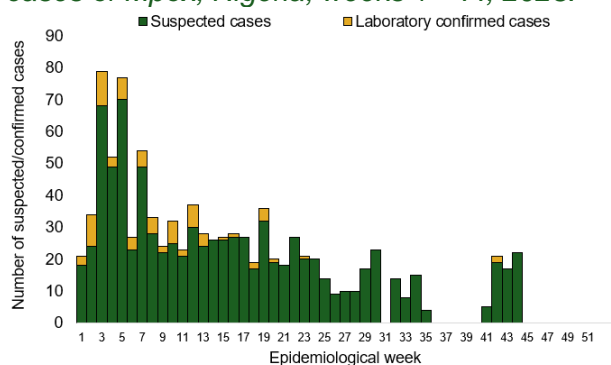
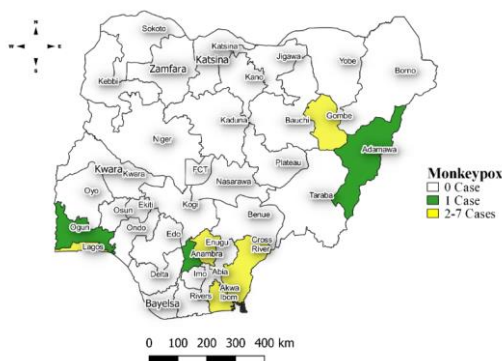


Figure 12: Location of suspected cases of Mpox by State, Nigeria, week 44, 2023



Key points

- There were 22 suspected cases of Mpox reported from 13 LGAs in eight states. There was no laboratory confirmed case and no death was recorded.

Actions

To date

- National Mpox Technical Working Group (TWG) is monitoring activities in all states.
- Providing offsite subnational support to resolve issues in reporting States
- Follow-up implementation of the approved Incident Action plan activities in collaboration with other pillars
- Continue to support effective sample management and transportation to the NRL from health facilities across the country

Acute Flaccid Paralysis (AFP)

Week 44

Suspected cases	Confirmed cases	Deaths	Number of States and LGAs affected
81	0	0	State: 25 LGA: 32

Year to date (week 1 – 44)

Suspected cases		Confirmed cases		Deaths		CFR	
2022	2023	2022	2023	2022	2023	2022	2023
6730	7897	0	0	7	0	0.1%	0%

Figure 13: Number of suspected and confirmed cases of AFP, Nigeria, weeks 1 – 44, 2023

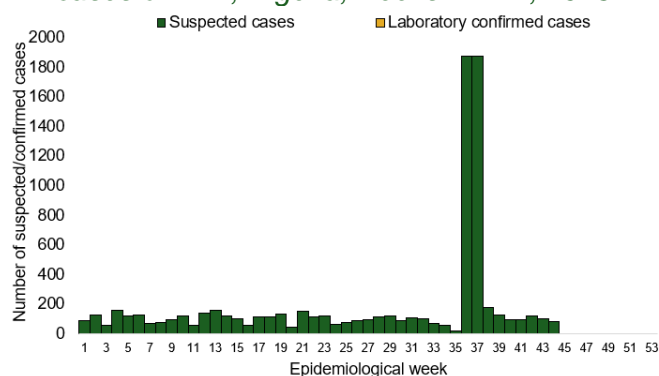
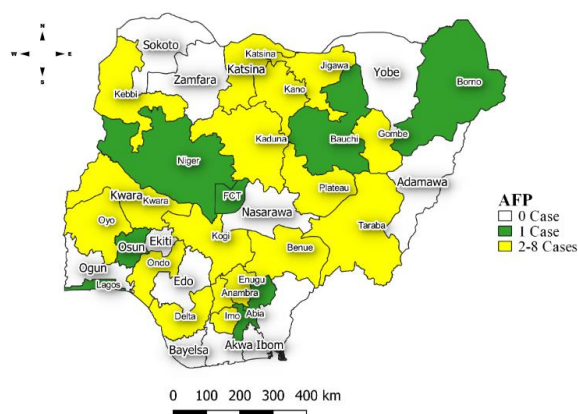


Figure 14: Location of suspected cases of AFP by State, Nigeria, week 44, 2023



Key points

- There were 81 suspected cases of AFP reported from 32 LGAs in 25 states. There was no laboratory confirmed case and no death was recorded.

National Influenza Sentinel Surveillance

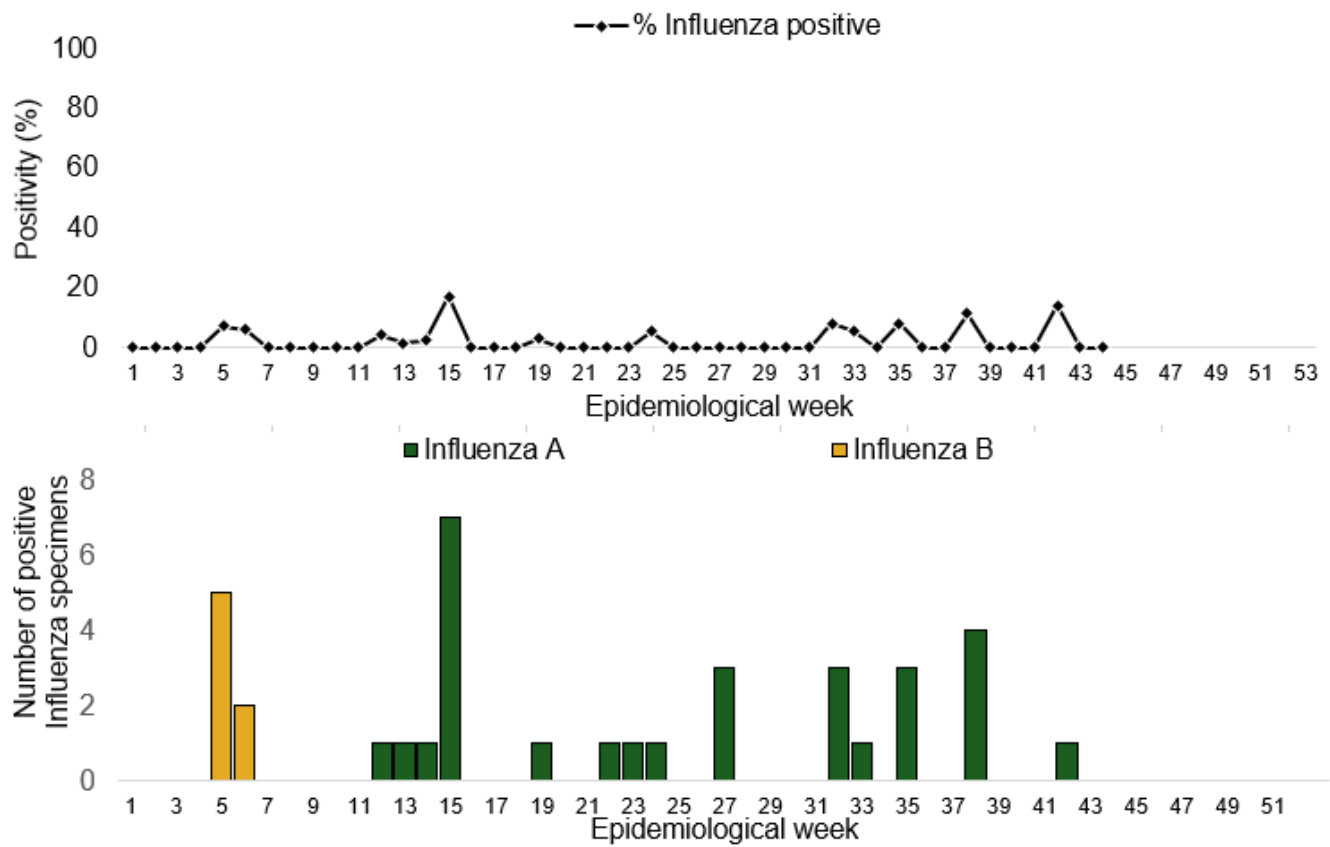
Year to date (week 1 – 44)

Suspected cases	Suspected ILI	Suspected SARI	Total Confirmed Cases	Confirmed cases by type	
1239	830	409	40 (3.2%)	Influenza A	Influenza B
				32(80%)	8(20%)

Week 44

Suspected Cases	Confirmed Cases	Confirmed Case by type	
		Influenza A	Influenza B
0	0	0	0

Figure 15: Number of influenza positive specimens by type and percentage positive by epidemiological week, 2023.



Coronavirus Disease (COVID-19)

Week 44

Suspected cases	Confirmed cases	Deaths	Number of States and LGAs affected
0	0	0	State: 0 LGA: 0

Year to date (Week 1- 44)

Test conducted	Confirmed cases	Deaths	Number of States and LGAs affected
64675	608	1	State: 30 + FCT LGA: 65

Figure 16: Epidemic curve of confirmed cases of COVID-19, Nigeria, week 44, 2023

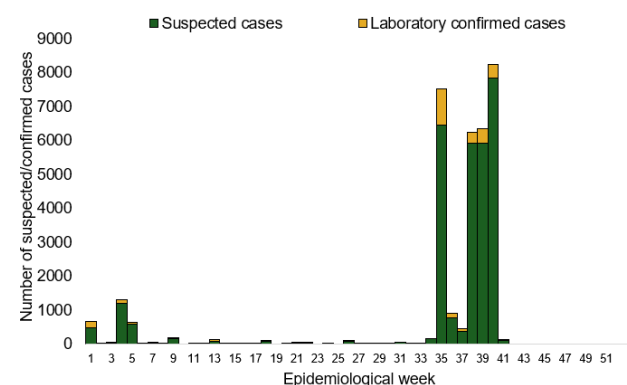
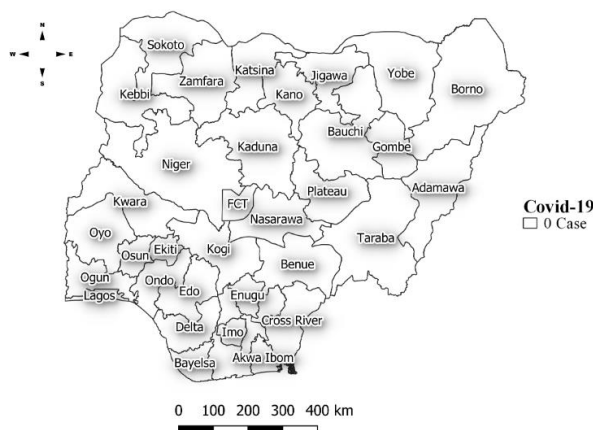


Figure 17: Location of **confirmed** cases of COVID-19 by State, Nigeria, as at week 44, 2023



Key points

- There was no case reported for the week.

Actions

To date:

- Multi-sectoral Public Health Emergency Operation Centres (PHEOC) activated at the National and affected States
- Engagement meetings with state teams on the ongoing response, Sitrep reporting and Ag-RDT data harmonization, challenges, and way forward.
- Mainstreaming of COVID-19 response activities into routine public health interventions such as surveillance, risk communication, testing etc.
- Begin implementation of the testing strategy to increase RDT uptake
- Continue to monitor global trends on COVID-19.
- Enhance surveillance at points of entry.

Diphtheria

Week 44

Suspected cases	Confirmed cases	Deaths	Number of States and LGAs affected
217	178	1	State: 5 LGA: 29

Year to date (week 1 – 44)

Suspected cases		Confirmed cases		Deaths		CFR	
2022	2023	2022	2023	2022	2023	2022	2023
123	17653	24	10863	17	560	13.8%	3.2%

Figure 18: Number of suspected and confirmed cases of Diphtheria, Nigeria, weeks 1 – 44, 2023

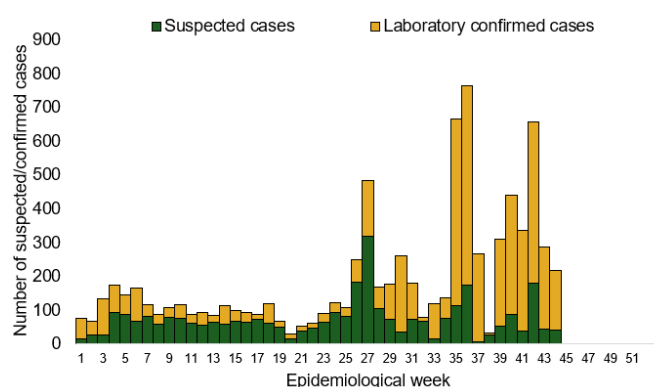
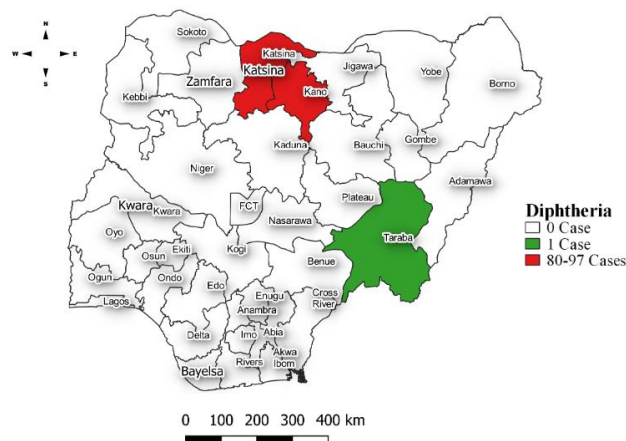


Figure 19: Location of suspected cases of Diphtheria by State, Nigeria, week 44, 2023



Key points

- There were 217 suspected cases of Diphtheria reported from 29 LGAs in five states. There were 178 confirmed cases, and one death was recorded.

Actions

To date

- National Diphtheria Technical Working Group (TWG) is monitoring activities in all states.
- Harmonisation of surveillance and laboratory data from across states and laboratories.
- Provision of off-site surveillance support to affected States.

Event Based Surveillance (EBS)

Week 44

Call Summary per Call Hub as of week 44, 2023

Call Hubs	NCDC	GLO	Total
Successful Calls	223	0	223
Failed Calls	16	0	16

Number of Received/Resolved Health Declaration calls/emails for week 44.

Calls	Emails	WhatsApp/texts
0	3	10

Disease conditions and events of public health importance captured as signals for the reporting week 43, 2023.

Number of Signals Category by Epi Week																																																		
S/N	Epi Week	1	2	3	4	5	6	7	8	9	10	11	12	13	14	15	16	17	18	19	20	21	22	23	24	25	26	27	28	29	30	31	32	33	34	35	36	37	38	39	40	41	42	43	44					
1	COVID19	0	0	0	0	0	0	0	0	0	0	0	0	0	0	0	0	0	0	0	0	0	0	0	0	0	0	0	0	0	0	0	0	0	0	0	0	0	0	0	0	0	0	0	0	0	0			
2	Lassa Fever	0	1	0	1	0	0	0	0	0	0	0	0	0	0	0	0	0	0	0	0	0	1	0	0	0	0	0	0	0	0	0	0	0	0	0	0	0	0	0	0	0	0	0	0	0	0	0		
3	Yellow Fever	0	0	0	0	0	0	0	0	0	0	0	0	0	0	0	0	0	0	0	0	0	0	0	0	0	0	0	0	0	0	0	0	0	0	0	0	1	0	0	0	0	0	0	0	0	0	0		
4	CSM	0	0	0	0	0	0	0	0	0	0	0	1	0	0	0	0	0	0	0	0	0	0	0	0	0	0	0	0	0	0	0	0	0	0	0	0	1	0	0	0	0	0	0	0	0	0	0		
5	Cholera	0	0	1	0	0	0	0	0	0	0	0	0	0	0	0	0	0	0	0	0	0	0	0	0	0	0	0	0	0	0	0	0	0	0	0	0	0	0	0	0	0	0	0	0	0	0	0	0	
6	Monkey Pox	1	0	0	0	0	0	0	0	0	0	0	0	0	0	0	0	0	0	0	0	0	0	0	0	0	0	0	0	0	0	0	0	0	0	0	0	0	0	0	0	0	0	0	0	0	0	0	0	
7	Measles & Rubella	0	0	0	0	0	0	0	0	0	0	0	0	0	0	0	0	0	0	0	0	0	0	0	0	0	0	0	0	0	0	0	0	0	0	0	0	1	0	0	0	0	0	0	0	0	0	0	0	
8	One Health Related Signals	0	0	0	0	0	0	0	0	0	0	0	0	0	0	0	0	0	0	0	0	0	0	0	0	0	0	0	0	0	0	0	0	0	0	0	0	0	0	0	0	0	0	0	0	0	0	0	0	0
9	Unexplained cluster of illness/ death in humans	0	0	0	0	0	0	0	0	0	0	0	1	1	0	0	0	0	0	0	0	0	0	0	0	0	0	0	0	0	0	0	0	0	0	0	0	0	0	0	0	0	0	0	0	0	0	0	0	0
	Disease or events of international or National																																																	
10	Concern	0	0	0	0	0	0	0	0	0	0	0	0	0	0	0	0	0	0	0	0	0	0	0	0	0	0	0	0	0	0	0	0	0	0	0	0	0	0	0	0	0	0	0	0	0	0	0	0	0
11	Others	0	0	5	1	0	1	0	0	0	0	0	0	0	0	0	0	1	0	0	0	1	1	0	2	0	0	1	0	0	0	1	1	0	0	0	1	1	0	1	1	0	1	0	1	1	0	0	0	0
	TOTAL	1	1	6	1	0	1	0	0	0	0	0	2	1	0	0	0	0	0	0	0	1	2	0	2	0	0	0	0	0	0	1	1	0	0	0	4	1	0	1	1	0	1	1	0	0	0	0		

For the reporting week 44:

- 233 Calls were successfully routed to agents and answered.
- 16 calls not routed to agents (Failed call)
- 239 total number of calls (successful and failed)
- Percentage of failed to total inbound calls 6.3%.
- 0 signal picked and escalated

For week 1 – 44

- 15,393 calls successfully routed to agents and answered
- 3,524 calls not routed to agents (Failed call)
- 19,078 total inbound calls recorded
- Percentage of failed to total inbound calls: 18.5%
- 30 Signals picked and escalated to 36 states and FCT

Categories of Calls

- Report of health conditions
- Health Declaration form-related queries
- Inquiries on Diphtheria symptoms, treatment, and Vaccine
- Inquiries on yellow fever vaccine
- Inquiries on Lassa fever vaccine
- Inquiries on malaria vaccine
- General inquiries
- Hoax call and others