



**Nigeria Centre for Disease Control and Prevention**  
*Protecting the health of Nigerians*

**Weekly Epidemiological Report**  
 Week 8: 19<sup>th</sup> – 25<sup>th</sup> February 2024

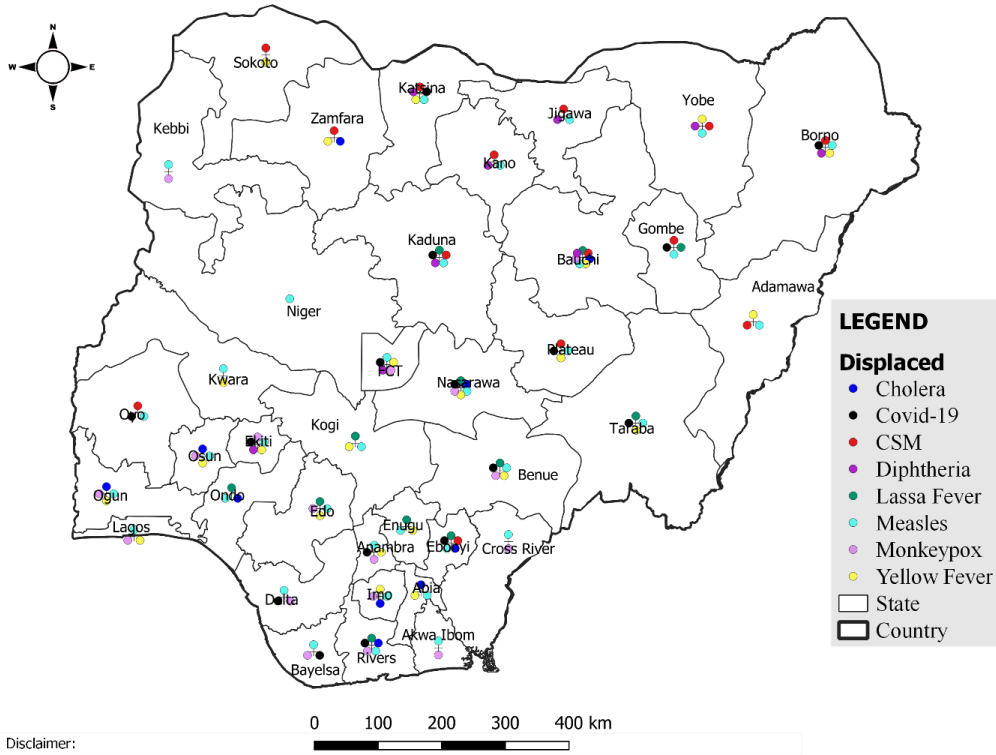
**Summary of Incidents**

**Ongoing incidents**

2

Ongoing incidents are defined as confirmed cases where a national EOC or equivalent has been activated (Lassa Fever and Diphtheria)

Other incidents are those with confirmed cases for which EOC is not activated



Data Source: SITAware

## Summary

Week 8: 19<sup>th</sup> – 25<sup>th</sup> February 2024

Lassa Fever <sup>1,2</sup>	Cerebrospinal Meningitis (CSM) <sup>1,4</sup>	Yellow Fever <sup>1,4</sup>
585 Suspected case(s)	262 Suspected case(s)	54 Suspected case(s)
96 Confirmed case(s)	7 Confirmed case(s)	0 Confirmed case(s)
23 Death(s)	8 Death(s)	0 Death(s)
Cholera <sup>1,4</sup>	Measles <sup>1,4</sup>	Mpox <sup>1,4</sup>
87 Suspected case(s)	729 Suspected case(s)	42 Suspected case(s)
0 Confirmed case(s)	99 Confirmed case(s)	0 Confirmed case(s)
3 Death(s)	5 Death(s)	0 Death(s)
Acute Flaccid Paralysis (AFP) <sup>1,4</sup>	National Sentinel influenza surveillance <sup>5</sup>	Coronavirus Disease <sup>1,</sup>
185 Suspected case(s)	25 Suspected case(s)	114 Suspected case(s)
0 Confirmed case(s)	0 Confirmed case(s)	114 Confirmed case(s)
0		0 Death(s)
Diphtheria <sup>1,4</sup>		
635 Suspected case(s)		
347 Confirmed case(s)		
7 Death(s)		

- Information for this disease was retrieved from the Technical Working Group and Situation Reports
- Case Fatality Rate (CFR) for this disease is reported for confirmed cases only.
- CFR for this disease is reported for total cases i.e. suspected + confirmed.
- Information for sentinel influenza was retrieved from the laboratory.

## Lassa Fever

### Week 8

Suspected cases	Confirmed cases	Deaths	Number of States and LGAs affected
585	96	23	State: 26 + FCT LGA: 39

### Year to date (week 1 – 8)

Suspected cases		Confirmed cases		Deaths		CFR	
2023	2024	2023	2024	2023	2024	2023	2024
2978	3213	636	573	104	108	16.4%	18.8%

Figure 1: Number of suspected and confirmed cases of Lassa Fever, Nigeria, Weeks 1 – 8, 2024

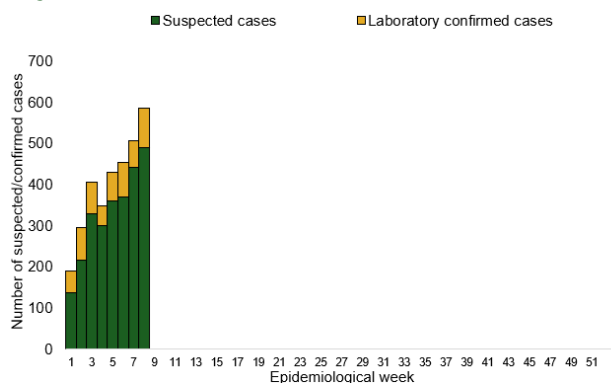
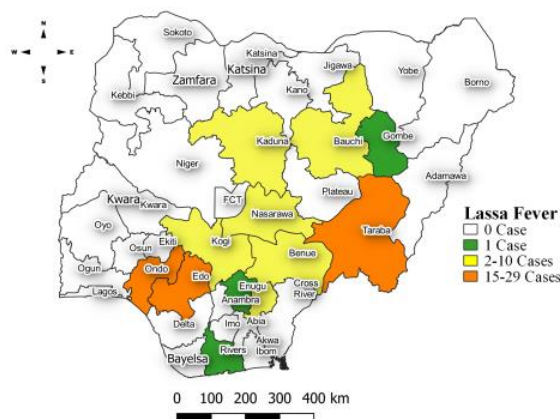


Figure 2: Location of confirmed cases of Lassa Fever by State, Nigeria, week 8, 2024



## Key points

- There were 585 suspected cases of Lassa Fever reported from 39 LGAs in 26 states and FCT. There were 96 laboratory-confirmed cases and 23 deaths were recorded.

## Actions

### To date:

- National Lassa fever multi-partner, multi-sectoral Technical Working Group (TWG) continues coordinating the response activities at all levels.
- Participated in a Consultative meeting to improve rodent control interventions in response to the Lassa fever outbreaks- Led by the Federal Ministry of Environment
- Joined the meeting of the Task Team on Effective vaccine for Lassa fever in Nigeria

## Cerebrospinal Meningitis (CSM)

### Week 8

Suspected cases	Confirmed cases	Deaths	Number of States and LGAs affected
262	7	8	State: 14 + FCT LGA: 39

### Year to date (week 1 – 8)

Suspected cases		Confirmed cases		Deaths		CFR	
2023	2024	2023	2024	2023	2024	2023	2024
441	975	42	22	17	62	3.8%	6.3%

Figure 3: Number of suspected and confirmed cases of CSM, Nigeria, weeks 1 – 8, 2024

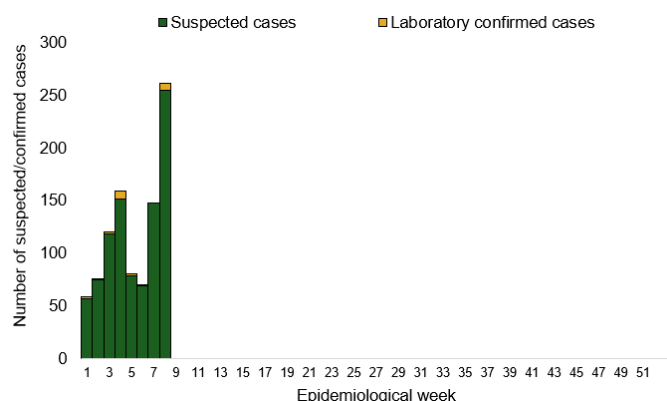
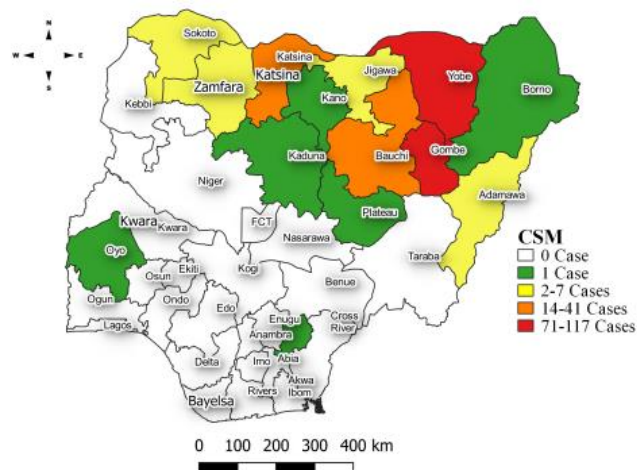


Figure 4: Location of suspected cases of CSM by State, Nigeria, week 8, 2024



### Key points

- There were 262 suspected cases of Cerebrospinal meningitis (CSM) reported from 39 LGAs in 14 states and FCT. There were seven laboratory confirmed cases and eight deaths were reported.

### Actions

#### To date:

- National CSM TWG meets weekly to review reports from states and plan appropriately.

## Yellow Fever

### Week 8

Suspected cases	Confirmed cases	Deaths	Number of States and LGAs affected
54	0	0	State: 24 + FCT LGA: 45

### Year to date (week 1 – 8)

Suspected cases		Confirmed cases		Deaths		CFR	
2023	2024	2023	2024	2023	2024	2023	2024
420	523	2	0	1	0	0.2%	0%

Figure 5: Number of suspected and confirmed cases of Yellow Fever, Nigeria, weeks 1 – 8, 2024

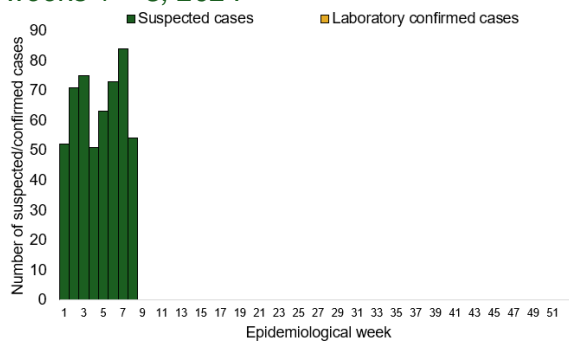
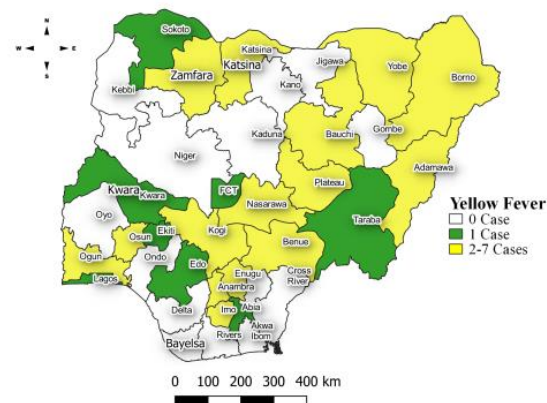


Figure 6: Location of suspected cases of Yellow Fever by States, Nigeria, week 8, 2024



### Key points

- There were 54 suspected cases of Yellow Fever (YF) reported from 45 LGAs in 24 states and FCT. There was no laboratory confirmed case and no death was recorded.

### Actions

#### To date:

- National YF multi-partner Technical Working Group (TWG) continues to coordinate activities across states.
- Harmonizing surveillance and laboratory data
- National YF multi-partner Technical Working Group (TWG) continues to coordinate activities across states.
- Daily monitoring and analysis of surveillance data across the country to guide response activities.
- Coordination of yellow fever sample management and transportation from all states to the regional reference laboratories
- Regular testing of yellow fever samples in all the testing laboratories

## Cholera

### Week 8

Suspected cases	Confirmed cases	Deaths	Number of States and LGAs affected
87	0	3	State: 10 LGA: 21

### Year to date (week 1 – 8)

Suspected cases		Confirmed cases		Deaths		CFR	
2023	2024	2023	2024	2023	2024	2023	2024
1472	689	24	1	45	13	3.1%	1.9%

Figure 7: Number of suspected and confirmed cases of Cholera, Nigeria, weeks 1 – 8, 2024

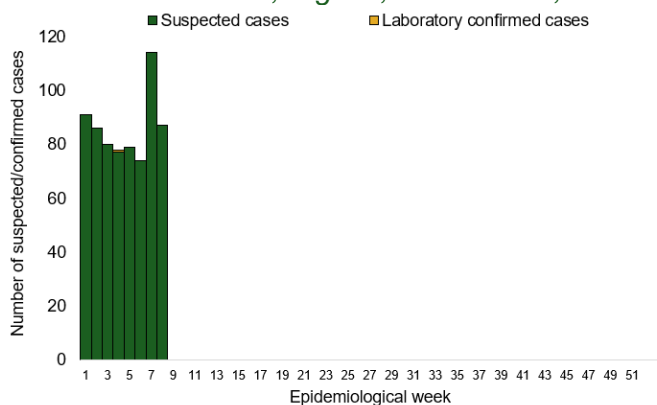
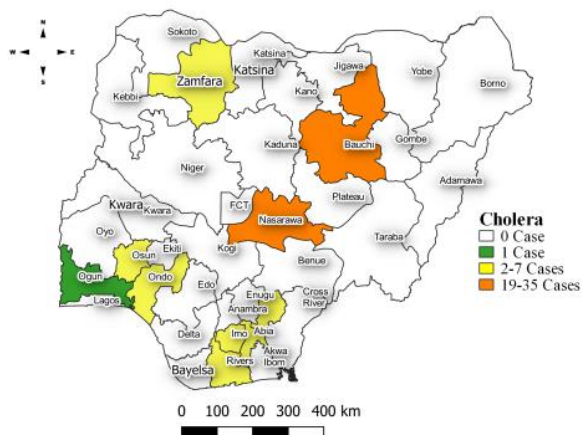


Figure 8: Location of suspected cases of Cholera by State, Nigeria, week 8, 2024



### Key points

- There were 87 suspected cases of Cholera reported from 21 LGAs in 10 states. There was no laboratory confirmed case and three deaths were recorded.

### Actions

#### To date

- National Cholera Multi-Sectoral Technical Working Group (TWG) is monitoring all states and supporting affected states.

## Measles

### Week 8

Suspected cases	Confirmed cases	Deaths	Number of States and LGAs affected
729	99	5	State: 34 + FCT LGA: 256

### Year to date (week 1 – 8)

Suspected cases		Confirmed cases		Deaths		CFR	
2023	2024	2023	2024	2023	2024	2023	2024
4788	5612	516	855	0	33	0%	0.6%

Figure 9: Number of suspected and confirmed cases of Measles, Nigeria, weeks 1 – 8, 2024.

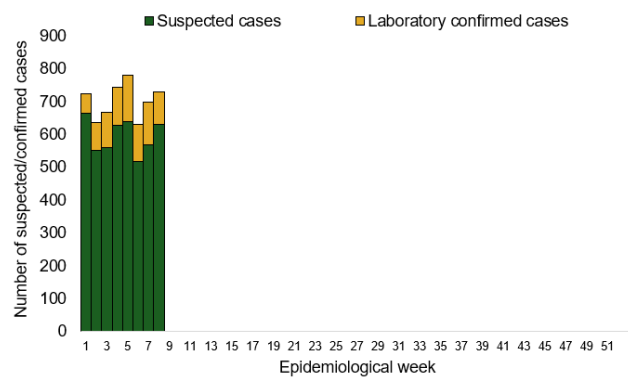
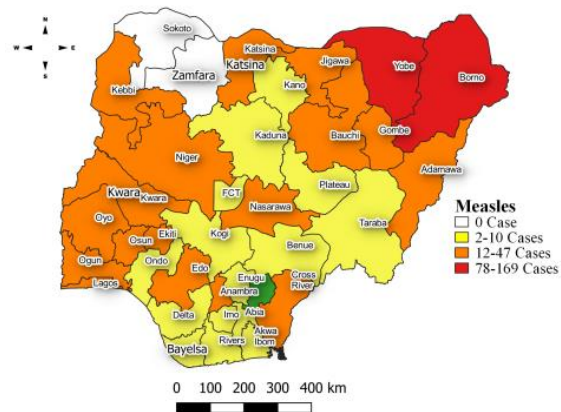


Figure 10: Location of suspected cases of Measles by State, Nigeria, week 8, 2024



### Key points

- There were 729 suspected cases of Measles reported from 256 LGAs in 34 states and FCT. There were 99 laboratory confirmed cases and five deaths were recorded.

### Actions

#### To date

- National Measles TWG is closely monitoring measles surveillance data and providing feedback to relevant agencies and development partners.

## Mpox

### Week 8

Suspected cases	Confirmed cases	Deaths	Number of States and LGAs affected
42	0	0	State: 16 + FCT LGA: 23

### Year to date (week 1 – 8)

Suspected cases		Confirmed cases		Deaths		CFR	
2023	2024	2023	2024	2023	2024	2023	2024
366	158	45	6	2	0	0.5%	0%

Figure 11: Number of suspected and confirmed cases of Mpox, Nigeria, weeks 1–8, 2024.

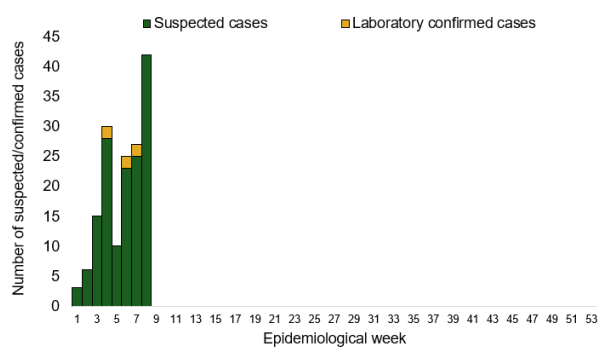
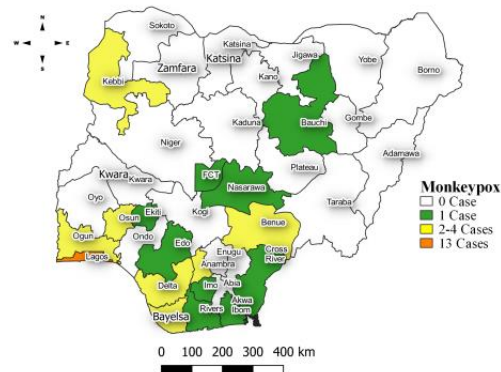


Figure 12: Location of suspected cases of Mpox by State, Nigeria, week 8, 2024



### Key points

- There were 42 suspected cases of Mpox reported from 23 LGAs in 16 states and FCT. There was no laboratory confirmed case and no death was recorded.

### Actions

#### To date

- National Mpox Technical Working Group (TWG) is monitoring activities in all states.



## Acute Flaccid Paralysis (AFP)

### Week 8

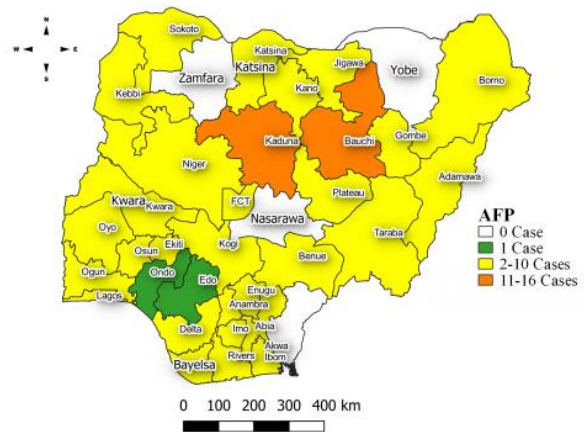
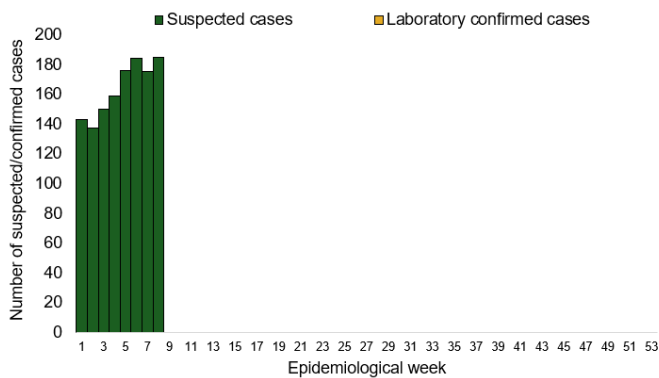
Suspected cases	Confirmed cases	Deaths	Number of States and LGAs affected
185	0	0	State: 31 + FCT LGA: 140

### Year to date (week 1 – 8)

Suspected cases		Confirmed cases		Deaths		CFR	
2023	2024	2023	2024	2023	2024	2023	2024
1118	1309	0	0	0	0	0%	0%

Figure 13: Number of suspected and confirmed cases of AFP, Nigeria, weeks 1 – 8, 2023

Figure 14: Location of suspected cases of AFP by State, Nigeria, week 8, 2024



### Key points

- There were 185 suspected cases of AFP reported from 140 LGAs in 31 states and FCT. There was no laboratory confirmed case and no death was recorded.

## National Influenza Sentinel Surveillance

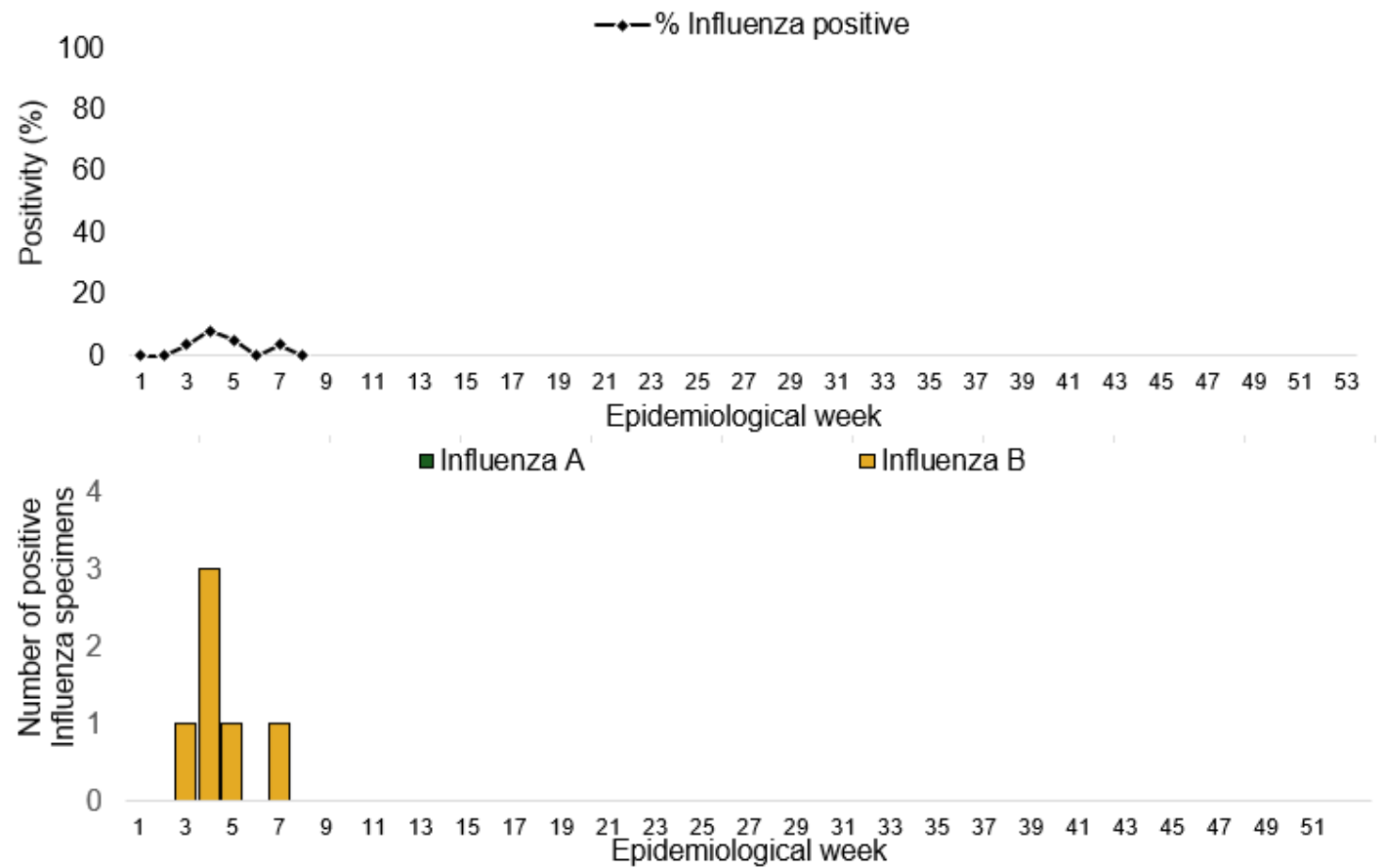
### Week 8

Suspected Cases	Confirmed Cases	Confirmed Case by type	
		Influenza A	Influenza B
25	0	0	0

### Year to date (week 1 – 8)

Suspected cases	Total Confirmed Cases	Confirmed cases by type	
191	6	Influenza A 0	Influenza B 6

Figure 15: Number of influenza positive specimens by type and percentage positive by epidemiological week, 2023.



## Coronavirus Disease (COVID-19)

### Week 8

Suspected cases	Confirmed cases	Deaths	Number of States and LGAs affected
114	114	0	State: 15 + FCT LGA: 43

### Year to date (Week 1- 8)

Suspected cases		Confirmed cases		Deaths		CFR	
2023	2024	2023	2024	2023	2024	2023	2024
253	578	253	578	1	0	0.4%	0%

Figure 16: Epidemic curve of confirmed cases of COVID-19, Nigeria, week 1 - 8, 2024

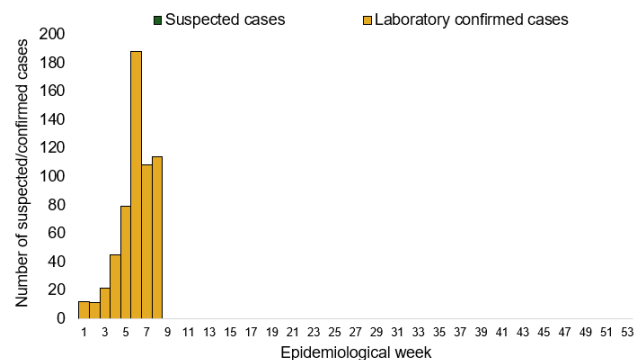
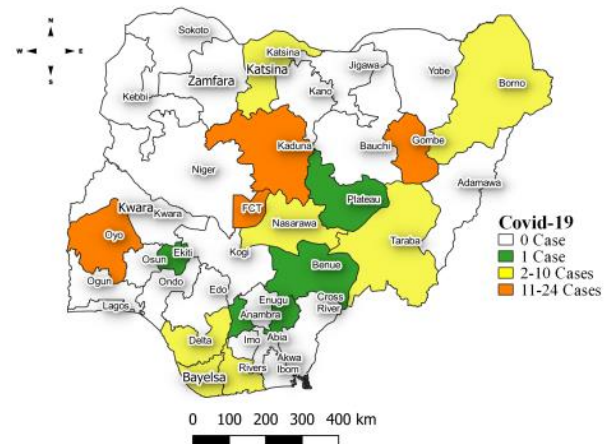


Figure 17: Location of confirmed cases of COVID-19 by State, Nigeria, as at week 8, 2024



### Key points

- There were 114 suspected cases of COVID-19 reported from 43 LGAs in 15 states and FCT. There were 114 confirmed cases and no death recorded

### Actions

#### To date:

- Multi-sectoral Public Health Emergency Operation Centres (PHEOC) activated at the National and affected States

## Diphtheria

### Week 8

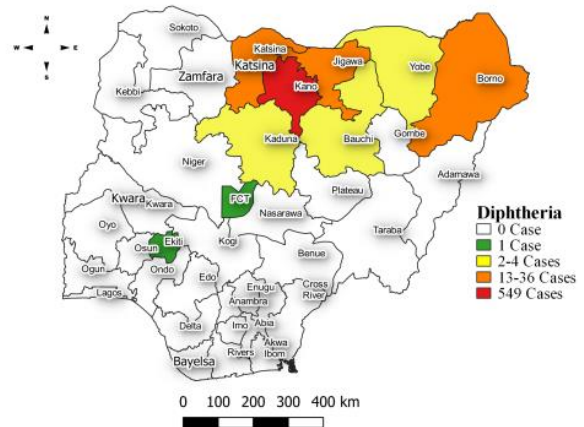
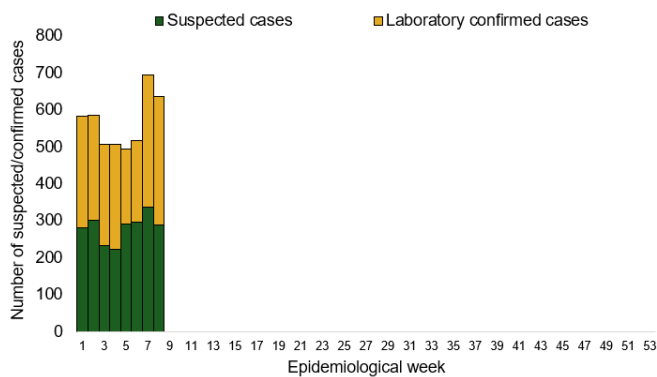
Suspected cases	Confirmed cases	Deaths	Number of States and LGAs affected
635	347	7	State: 8 + FCT LGA: 52

### Year to date (week 1 – 8)

Suspected cases		Confirmed cases		Deaths		CFR	
2023	2024	2023	2024	2023	2024	2023	2024
966	4514	559	2269	77	42	7.9%	0.9%

Figure 18: Number of suspected and confirmed cases of Diphtheria, Nigeria, weeks 1 – 8, 2024

Figure 19: Location of suspected cases of Diphtheria by State, Nigeria, week 8, 2024



## Key points

- There were 635 suspected cases of Diphtheria reported from 52 LGAs in eight states and FCT. There were 347 confirmed cases and seven deaths were recorded.

## Actions To date

- National Diphtheria Technical Working Group (TWG) is monitoring activities in all states.
- Harmonisation of surveillance and laboratory data from across states and laboratories.
- Provision of off-site surveillance support to affected States.

## Event Based Surveillance (EBS)

### Week 8

#### Key points

For the reporting week 8:

- 209 Calls were successfully routed to agents and answered
- 4 calls not routed to agents (Failed call)
- 213 total number of calls (successful and failed)
- 3 number of SMS received
- 0 WhatsApp/live chat messages received
- Percentage of failed to total inbound calls 1.9%
- 6 signals picked and escalated to the States as follows;
  - Records of 10 deaths of Lassa Fever from Ebonyi State (Daily post)
  - Cases of Avian Influenza at Amanawa village, Kalgo, outskirts of Birnin Kebbi, Kebbi State
  - A suspected case of small and Mpox at Bauchi LGA, Bauchi State
  - Guardian Nigeria online news media reported of dead fishes at the shoreline of Rivers State
  - An SMS was received that a patient died of Lassa Fever at Gbagada general hospital Lagos

For week 1 – 8:

- 766 calls were successfully routed to agents and answered
- 46 calls not routed to agents (Failed call)
- 812 total inbound calls recorded
- Percentage of failed to total inbound calls: 5.7%
- 8 Signals picked and escalated

#### Categories of Calls

- General inquiries 81
- Hoax call and others 27
- Report of health conditions 52
- Inquiry on Lassa fever 25
- Inquiry on malaria vaccine 0
- Health Declaration form-related queries 0
- Inquiries on Diphtheria symptoms, treatment, and Vaccine 1
- Inquiries on yellow fever vaccine 2
- Inquiries on Lassa fever vaccine 2
- COVID19 vaccination inquiries 0

Figure 20: Number of successful and failed calls, weeks 1 – 8, 2024

