



Weekly Epidemiological Report

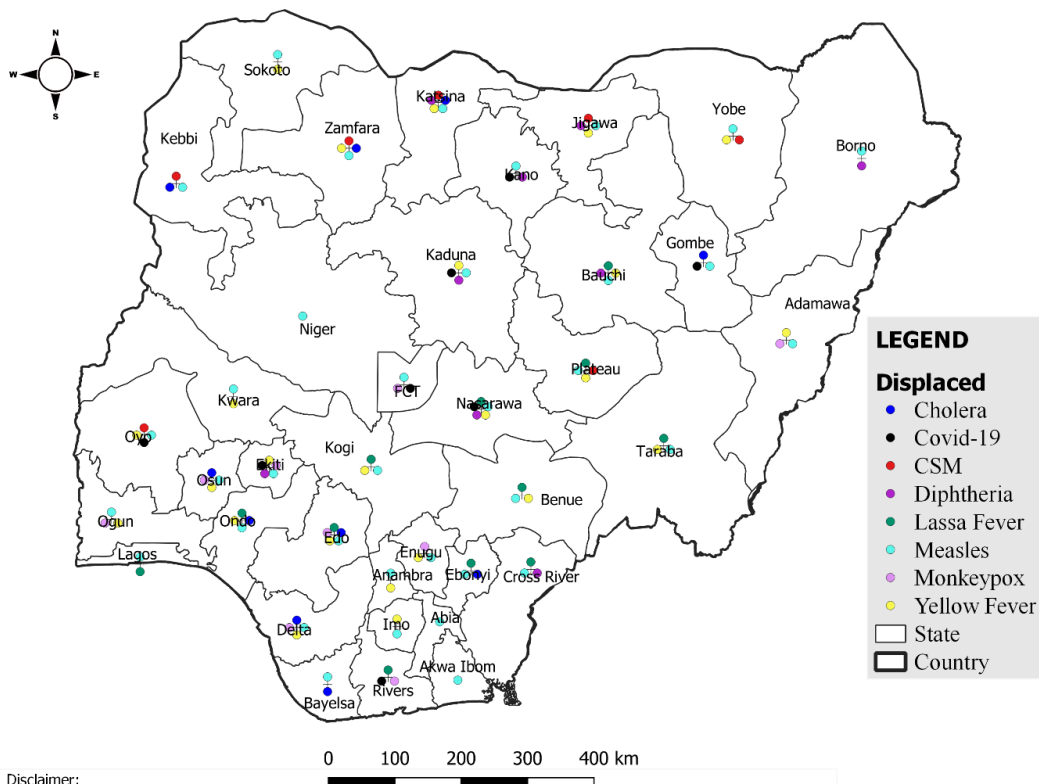
Week 6: 5th – 11th February 2024

Summary of Incidents

Ongoing incidents
2

Ongoing incidents are defined as confirmed cases where a national EOC or equivalent has been activated (Lassa Fever)

Other incidents are those with confirmed cases for which EOC is not activated



Data Source: SITAware

Summary

Week 6: 5th January – 11th February 2024

Lassa Fever ^{1,2}	Cerebrospinal Meningitis (CSM) ^{1,4}	Yellow Fever ^{1,4}
453 Suspected case(s)	70 Suspected case(s)	73 Suspected case(s)
83 Confirmed case(s)	1 Confirmed case(s)	0 Confirmed case(s)
9 Death(s)	4 Death(s)	0 Death(s)
Cholera ^{1,4}	Measles ^{1,4}	Mpox ^{1,4}
74 Suspected case(s)	630 Suspected case(s)	25 Suspected case(s)
0 Confirmed case(s)	114 Confirmed case(s)	2 Confirmed case(s)
2 Death(s)	1 Death(s)	0 Death(s)
Acute Flaccid Paralysis (AFP) ^{1,4}	National Sentinel influenza surveillance ⁵	Coronavirus Disease ^{1,}
184 Suspected case(s)	45 Suspected case(s)	188 Suspected case(s)
0 Confirmed case(s)	0 Confirmed case(s)	0 Confirmed case(s)
0 Death(s)		0 Death(s)
Diphtheria ^{1,4}		
517 Suspected case(s)		
222 Confirmed case(s)		
2 Death(s)		

- Information for this disease was retrieved from the Technical Working Group and Situation Reports
- Case Fatality Rate (CFR) for this disease is reported for confirmed cases only.
- CFR for this disease is reported for total cases i.e. suspected + confirmed.
- Information for sentinel influenza was retrieved from the laboratory.

Lassa Fever

Week 6

Suspected cases	Confirmed cases	Deaths	Number of States and LGAs affected
453	83	9	State: 24 LGA: 33

Year to date (week 1 – 6)

Suspected cases		Confirmed cases		Deaths		CFR	
2023	2024	2023	2024	2023	2024	2023	2024
828	2122	484	411	85	72	17.6%	17.5%

Figure 1: Number of suspected and confirmed cases of Lassa Fever, Nigeria, Weeks 1 – 6, 2024

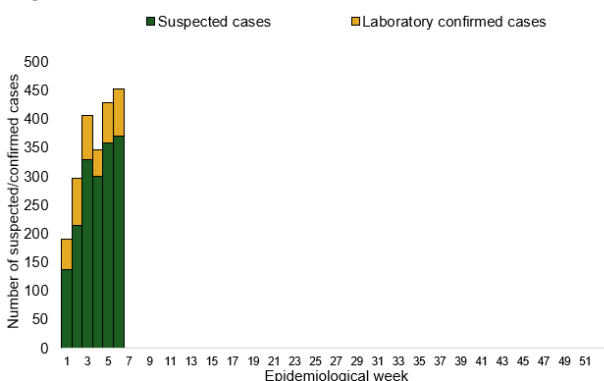
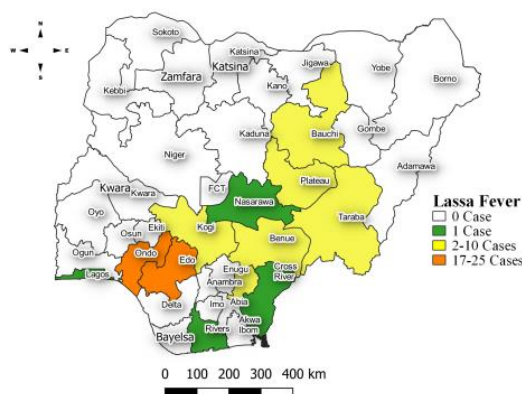


Figure 2: Location of **confirmed** cases of Lassa Fever by State, Nigeria, week 6, 2024



Key points

- There were 453 suspected cases of Lassa Fever reported from 33 LGAs in 24 states. There were 83 laboratory confirmed cases and nine deaths were recorded.

Actions

To date:

- National Lassa fever multi-partner, multi-sectoral Technical Working Group (TWG) continues to coordinate the response activities at all levels.
- Shared approved 2024 Incident Action Plan with stakeholders
- Clinical screening for Lassa fever at 2 PHCs
- Management of cases at AEFUTHA with support of MSF Belgium

Cerebrospinal Meningitis (CSM)

Week 6

Suspected cases	Confirmed cases	Deaths	Number of States and LGAs affected
70	1	4	State: 7 LGA: 24

Year to date (week 1 – 6)

Suspected cases		Confirmed cases		Deaths		CFR	
2023	2024	2023	2024	2023	2024	2023	2024
320	565	26	15	6	46	1.9%	8.1%

Figure 3: Number of suspected and confirmed cases of CSM, Nigeria, weeks 1 – 6, 2024

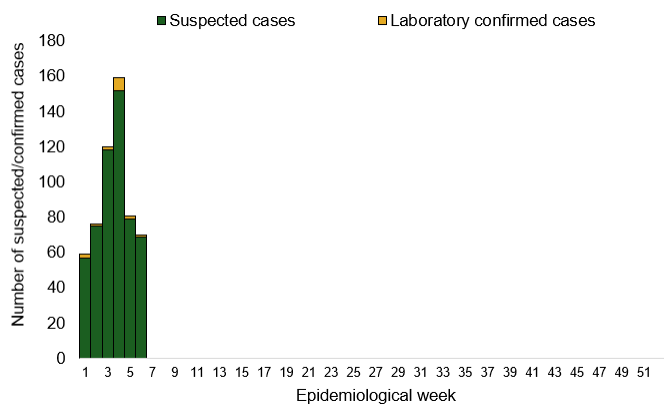
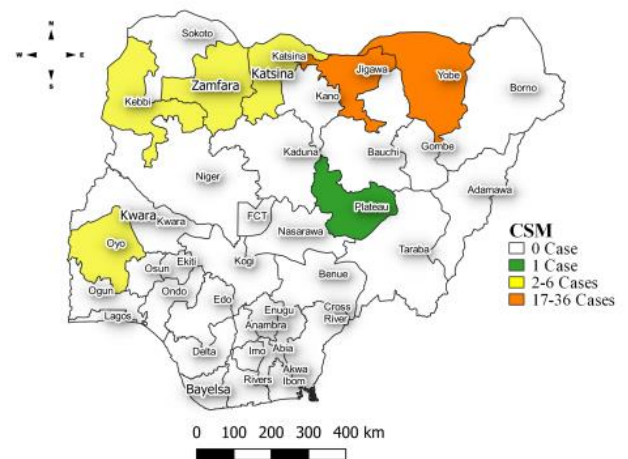


Figure 4: Location of suspected cases of CSM by State, Nigeria, week 6, 2024



Key points

- There were 70 suspected cases of Cerebrospinal meningitis (CSM) reported from 24 LGAs in seven states. There was one laboratory confirmed case and four deaths were reported.

Actions

To date:

- National CSM TWG meets weekly to review reports from states and plan appropriately.

Yellow Fever

Week 6

Suspected cases	Confirmed cases	Deaths	Number of States and LGAs affected
73	0	0	State: 25 LGA: 55

Year to date (week 1 – 6)

Suspected cases		Confirmed cases		Deaths		CFR	
2023	2024	2023	2024	2023	2024	2023	2024
335	385	2	0	0	0	0%	0%

Figure 5: Number of suspected and confirmed cases of Yellow Fever, Nigeria, weeks 1 – 6, 2024

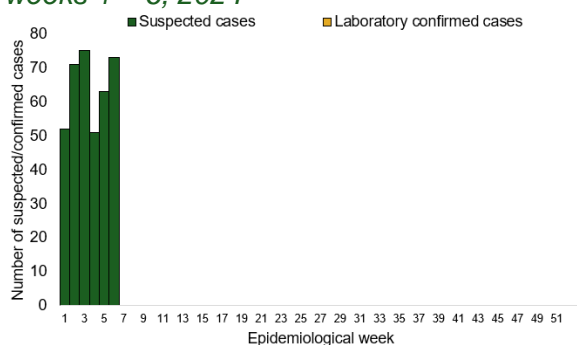
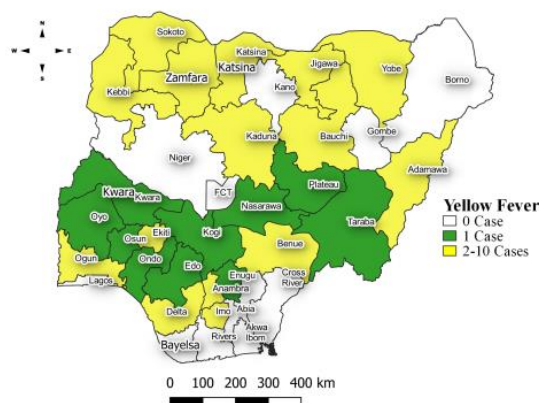


Figure 6: Location of suspected cases of Yellow Fever by States, Nigeria, week 6, 2024



Key points

- There were 73 suspected cases of Yellow Fever (YF) reported from 55 LGAs in 25 states. There was no laboratory-confirmed case and no death was recorded.

Actions

To date:

- National YF multi-partner Technical Working Group (TWG) continues to coordinate activities across states.
- Daily monitoring and analysis of surveillance data across the country to guide response activities.
- Coordination of yellow fever sample management and transportation from all states to the regional reference laboratories
- Regular testing of yellow fever samples in all the testing laboratories

Cholera

Week 6

Suspected cases	Confirmed cases	Deaths	Number of States and LGAs affected
74	0	2	State: 9 LGA: 20

Year to date (week 1 – 6)

Suspected cases		Confirmed cases		Deaths		CFR	
2023	2024	2023	2024	2023	2024	2023	2024
1076	488	21	1	29	6	2.7%	1.2%

Figure 7: Number of suspected and confirmed cases of Cholera, Nigeria, weeks 1 – 6, 2024

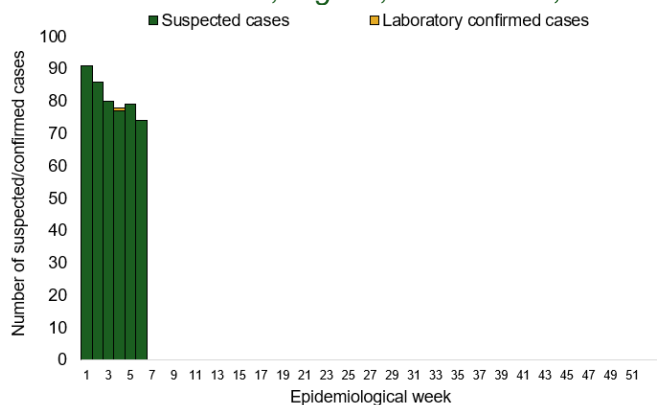
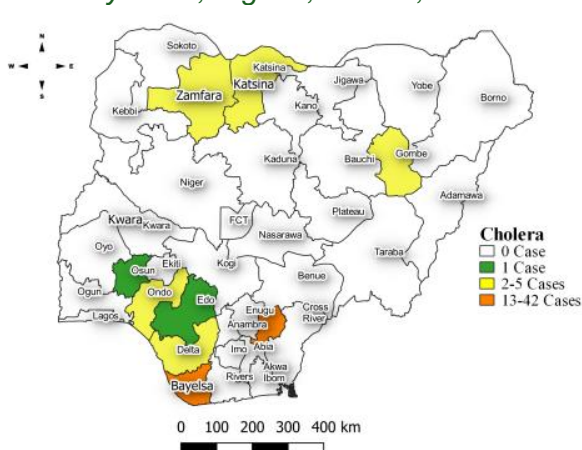


Figure 8: Location of suspected cases of Cholera by State, Nigeria, week 6, 2024



Key points

- There were 74 suspected cases of Cholera reported from 20 LGAs in nine states. There was no laboratory confirmed case and two deaths were recorded.

Actions

To date

- National Cholera Multi-Sectoral Technical Working Group (TWG) is monitoring all states and supporting affected states.

Measles

Week 6

Suspected cases	Confirmed cases	Deaths	Number of States and LGAs affected
630	114	1	State: 35 + FCT LGA: 236

Year to date (week 1 – 6)

Suspected cases		Confirmed cases		Deaths		CFR	
2023	2024	2023	2024	2023	2024	2023	2024
3700	4184	431	626	0	27	0%	0.6%

Figure 9: Number of suspected and confirmed cases of Measles, Nigeria, weeks 1 – 6, 2024.

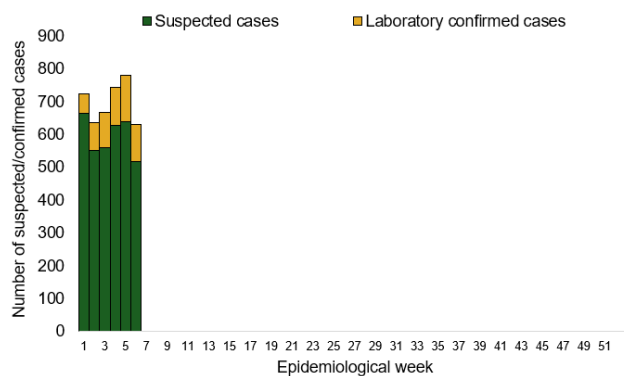
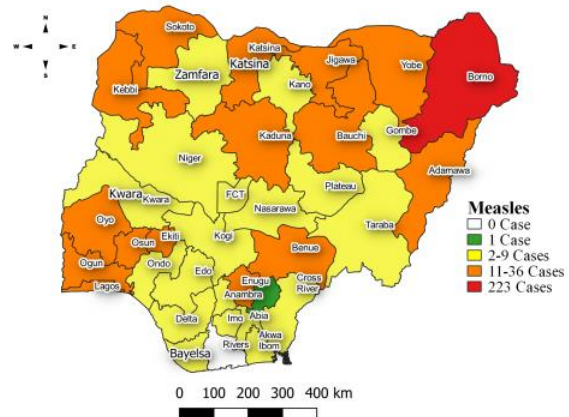


Figure 10: Location of suspected cases of Measles by State, Nigeria, week 6, 2024



Key points

- There were 630 suspected cases of Measles reported from 236 LGAs in 35 states and FCT. There were 114 laboratory confirmed cases and one death was recorded.

Actions

To date

- National Measles TWG is closely monitoring measles surveillance data and providing feedback to relevant agencies and development partners.

Mpox

Week 6

Suspected cases	Confirmed cases	Deaths	Number of States and LGAs affected
25	2	0	State: 9 LGA: 14

Year to date (week 1 – 6)

Suspected cases		Confirmed cases		Deaths		CFR	
2023	2024	2023	2024	2023	2024	2023	2024
290	89	38	4	1	0	0.3%	0%

Figure 11: Number of suspected and confirmed cases of Mpox, Nigeria, weeks 1– 6, 2024.

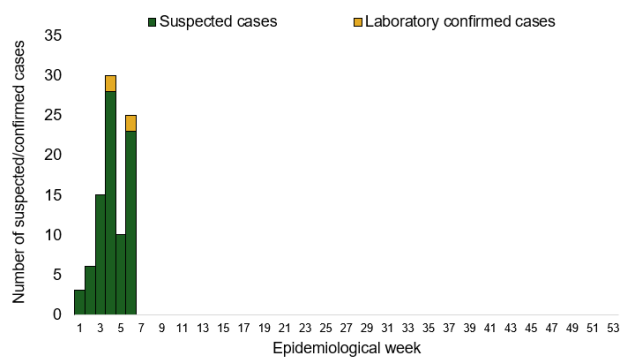
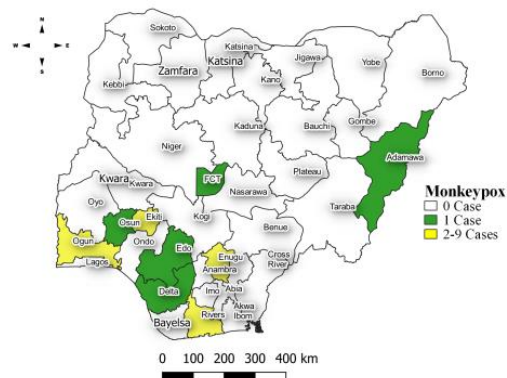


Figure 12: Location of suspected cases of Mpox by State, Nigeria, week 6, 2024



Key points

- There were 25 suspected cases of Mpox reported from 14 LGAs in nine states. There were two laboratory confirmed cases and no death was recorded.

Actions

To date

- National Mpox Technical Working Group (TWG) is monitoring activities in all states.

Acute Flaccid Paralysis (AFP)

Week 6

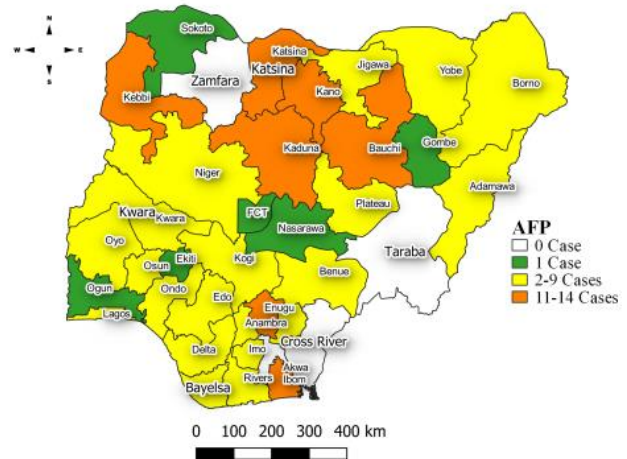
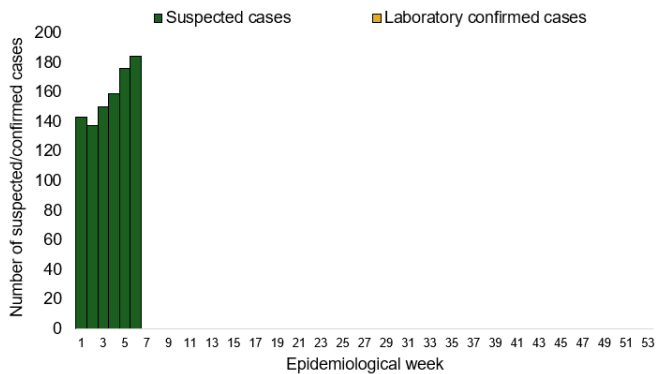
Suspected cases	Confirmed cases	Deaths	Number of States and LGAs affected
184	0	0	State: 32 + FCT LGA: 140

Year to date (week 1 – 6)

Suspected cases		Confirmed cases		Deaths		CFR	
2023	2024	2023	2024	2023	2024	2023	2024
906	949	0	0	0	0	0%	0%

Figure 13: Number of suspected and confirmed cases of AFP, Nigeria, weeks 1 – 6, 2023

Figure 14: Location of suspected cases of AFP by State, Nigeria, week 6, 2024



Key points

- There were 184 suspected cases of AFP reported from 140 LGAs in 32 states and FCT. There was no laboratory confirmed case and no death was recorded.

National Influenza Sentinel Surveillance

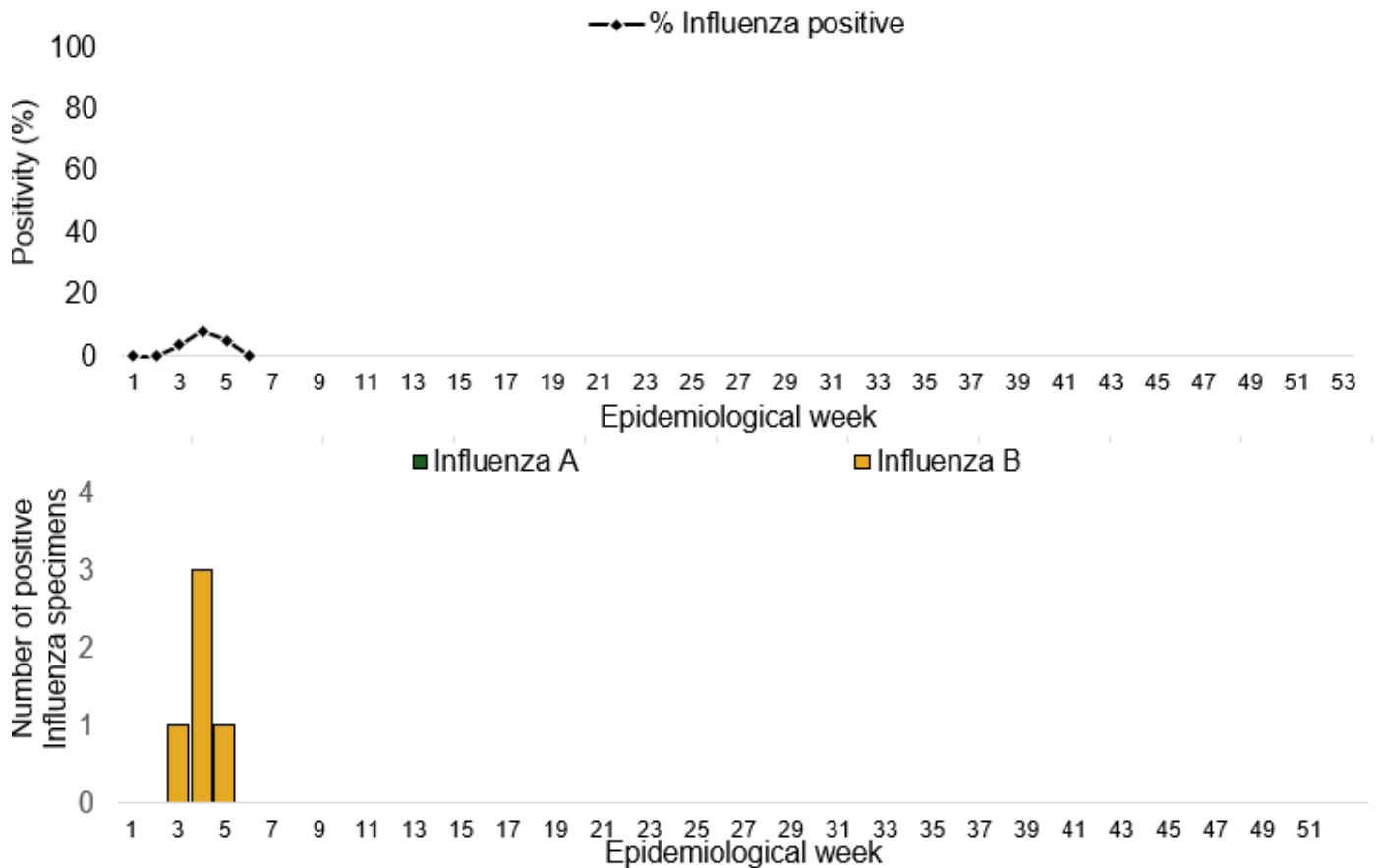
Week 6

Suspected Cases	Confirmed Cases	Confirmed Case by type	
		Influenza A	Influenza B
45	0	0	0

Year to date (week 1 – 6)

Suspected cases	Total Confirmed Cases	Confirmed cases by type	
		Influenza A	Influenza B
138	5	0	5

Figure 15: Number of influenza positive specimens by type and percentage positive by epidemiological week, 2023.



Coronavirus Disease (COVID-19)

Week 6

Suspected cases	Confirmed cases	Deaths	Number of States and LGAs affected
188	188	0	State: 7 + FCT LGA: 38

Year to date (Week 1- 6)

Suspected cases		Confirmed cases		Deaths		CFR	
2023	2024	2023	2024	2023	2024	2023	2024
150	356	150	356	1	0	0.6%	0%

Figure 16: Epidemic curve of confirmed cases of COVID-19, Nigeria, week 1 - 6, 2024

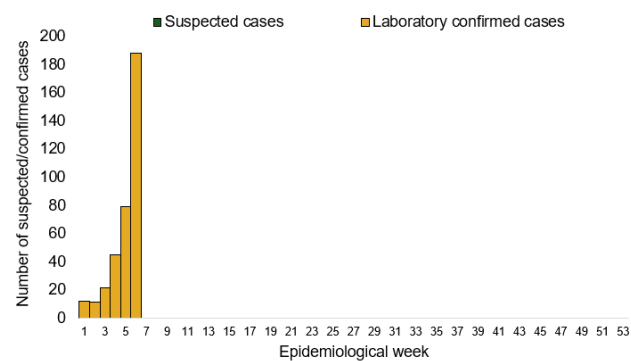
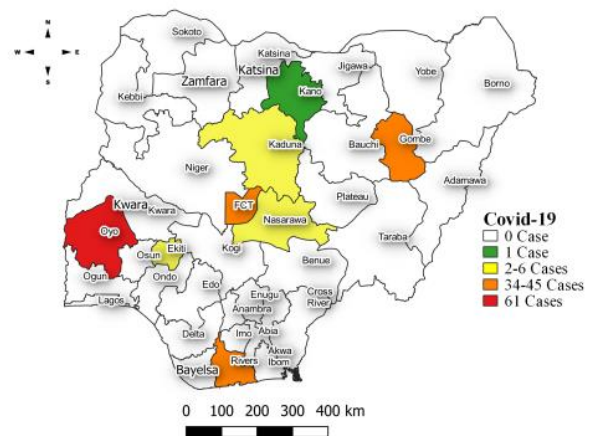


Figure 17: Location of confirmed cases of COVID-19 by State, Nigeria, as at week 6, 2024



Key points

- There were 188 suspected cases of COVID-19 reported from 38 LGAs in seven states and FCT. There were 188 confirmed cases and no death recorded

Actions

To date:

- Multi-sectoral Public Health Emergency Operation Centres (PHEOC) activated at the National and affected States

Diphtheria

Week 6

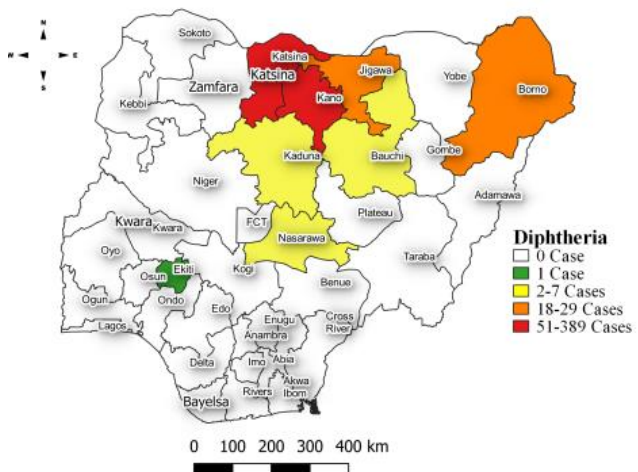
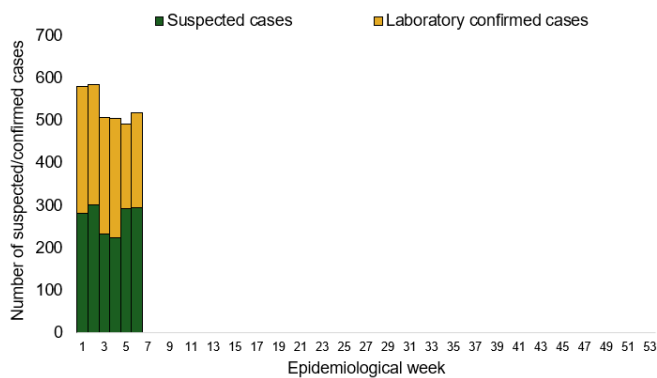
Suspected cases	Confirmed cases	Deaths	Number of States and LGAs affected
517	222	2	State: 9 LGA: 53

Year to date (week 1 – 6)

Suspected cases		Confirmed cases		Deaths		CFR	
2023	2024	2023	2024	2023	2024	2023	2024
762	3185	439	1563	62	31	8.1%	0.9%

Figure 18: Number of suspected and confirmed cases of Diphtheria, Nigeria, weeks 1 – 6, 2024

Figure 19: Location of suspected cases of Diphtheria by State, Nigeria, week 6, 2024



Key points

- There were 517 suspected cases of Diphtheria reported from 53 LGAs in nine states. There were 222 confirmed cases, and two deaths were recorded.

Actions To date

- The National Diphtheria Technical Working Group (TWG) is monitoring activities in all states.
- Harmonisation of surveillance and laboratory data from across states and laboratories.
- Provision of off-site surveillance support to affected States.

Event-Based Surveillance (EBS)

Week 6

Key points

For the reporting week 6:

- 77 Calls were successfully routed to agents and answered
- 14 calls not routed to agents (Failed call)
- 91 total number of calls (successful and failed)
- 0 number of SMS received
- 0 WhatsApp/live chat messages received
- Percentage of failed to total inbound calls 15.4%
- 0 signal picked

For week 1 – 6:

- 484 calls were successfully routed to agents and answered
- 29 calls not routed to agents (Failed call)
- 513 total inbound calls recorded
- Percentage of failed to total inbound calls: 5.7%
- 2 Signals picked and escalated

Categories of Calls

- General inquiries 31
- Hoax call and others 34
- Report of health conditions 6
- Inquiry on Lassa fever 18
- Inquiry on malaria vaccine 0
- Health Declaration form-related queries 0
- Inquiries on Diphtheria symptoms, treatment, and Vaccine 0
- Inquiries on yellow fever vaccine 0
- Inquiries on Lassa fever vaccine 2
- COVID-19 vaccination inquiries 0

Figure 20: Number of successful and failed calls, weeks 1 – 6, 2024

