



Nigeria Centre for Disease Control and Prevention
Protecting the health of Nigerians

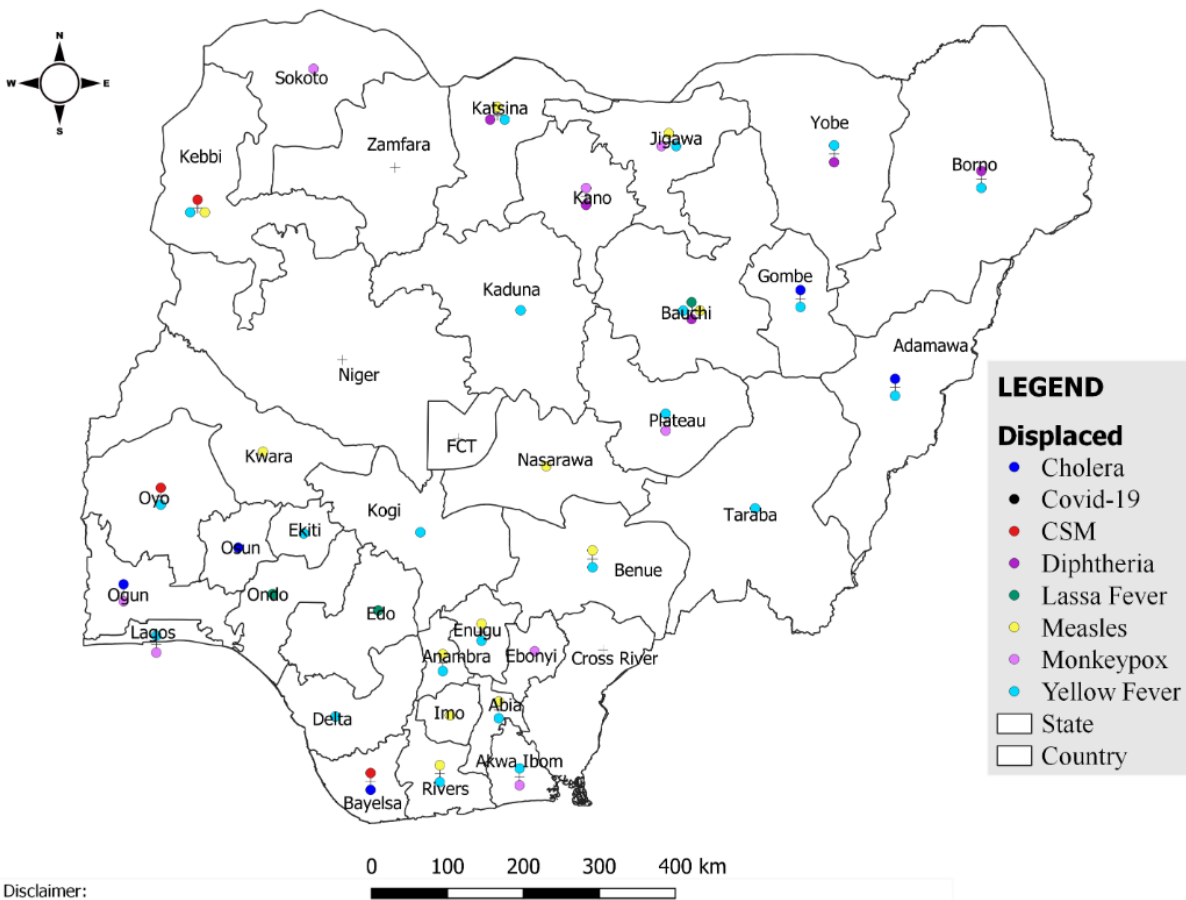
Weekly Epidemiological Report
 Week 42: 16th – 22nd October, 2023

Summary of Incidents

Ongoing incidents
1

Ongoing incidents are defined as confirmed cases where a national EOC or equivalent has been activated (EOC is currently activated for COVID-19)

Other incidents are those with confirmed cases for which EOC is not activated



Data Source: SITAware

Summary

Week 42: 16th – 22nd October, 2023

Lassa Fever ^{1,2}	Cerebrospinal Meningitis (CSM) ^{1,4}	Yellow Fever ^{1,4}
118 Suspected case(s)	3 Suspected case(s)	83 Suspected case(s)
9 Confirmed case(s)	0 Confirmed case(s)	0 Confirmed case(s)
0 Death(s)	0 Death(s)	0 Death(s)
Cholera ^{1,4}	Measles ^{1,4}	Mpox ^{1,4}
19 Suspected case(s)	65 Suspected case(s)	21 Suspected case(s)
0 Confirmed case(s)	6 Confirmed case(s)	2 Confirmed case(s)
0 Death(s)	0 Death(s)	0 Death(s)
Acute Flaccid Paralysis (AFP) ^{1,4}	National Sentinel Influenza Surveillance ⁵	Coronavirus Disease ^{1,}
116 Suspected case(s)	7 Suspected case(s)	0 Suspected case(s)
0 Confirmed case(s)	1 Confirmed case(s)	0 Confirmed case(s)
		0 Death(s)
Diphtheria ^{1,4}		
656 Suspected case(s)		
478 Confirmed case(s)		
7 Death(s)		

- Information for this disease was retrieved from the Technical Working Group and Situation Reports
- Case Fatality Rate (CFR) for this disease is reported for confirmed cases only
- CFR for this disease is reported for total cases i.e. suspected + confirmed
- Information for sentinel influenza was retrieved from the laboratory

Lassa Fever

Week 42

Suspected cases	Confirmed cases	Deaths	Number of States and LGAs affected
118	9	0	State: 17 + FCT LGA: 26

Year to date (week 1 – 42)

Suspected cases		Confirmed cases		Deaths		CFR	
2022	2023	2022	2023	2022	2023	2022	2023
7076	7842	948	1104	181	188	19.1%	17%

Figure 1: Number of suspected and confirmed cases of Lassa Fever, Nigeria, Weeks 1 – 42, 2023

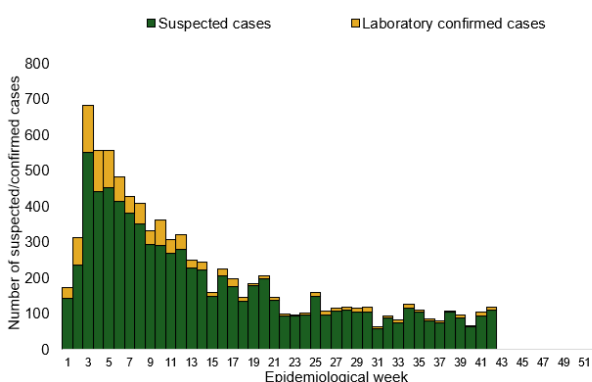
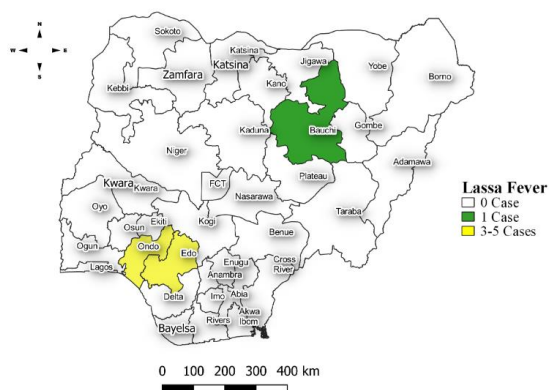


Figure 2: Location of **confirmed** cases of Lassa Fever by State, Nigeria, week 42, 2023



Key points

- There were 118 suspected cases of Lassa Fever reported from 26 LGAs in 17 states and FCT. There were nine laboratory confirmed cases reported from seven LGAs in three states and no deaths were recorded.

Actions

To date:

- National Lassa fever multi-partner, multi-sectoral Technical Working Group (TWG) continues to coordinate the response activities at all levels
- Activation of the Lassa Fever EOC
- Deployed NRRT to 6 states – Bauchi, Benue, Ebonyi, Edo, Ondo & Taraba
- Coordinated a two-day LF Colloquium & workshop with support from UCL and Jhpiego
- Piloting of Epidemic Ready Primary Health Care (ERPHC) program in two states

Cerebrospinal Meningitis (CSM)

Week 42

Suspected cases	Confirmed cases	Deaths	Number of States and LGAs affected
3	0	0	State: 0 LGA: 0

Year to date (week 1 – 42)

Suspected cases		Confirmed cases		Deaths		CFR	
2022	2023	2022	2023	2022	2023	2022	2023
796	2503	0	315	101	158	12.7%	6.3%

Figure 3: Number of suspected and confirmed cases of CSM, Nigeria, weeks 1 – 42, 2023

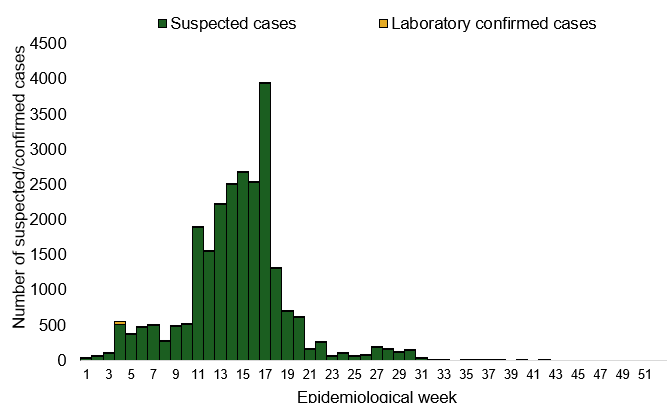
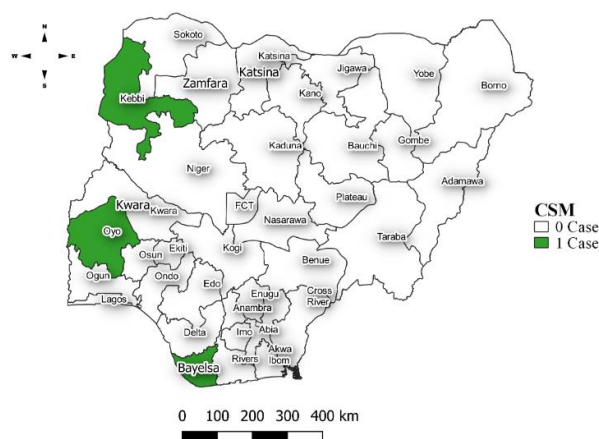


Figure 4: Location of suspected cases of CSM by State, Nigeria, week 42, 2023



Key points

- There were three suspected cases of Cerebrospinal Meningitis (CSM) reported in three LGAs in three states. There was no confirmed case and no deaths were recorded.

Actions

To date:

- National CSM TWG meets weekly to review reports from states and plan appropriately.
- Monitoring of epidemiological trend to guide plans for reactive vaccination campaigns,
- Implementation of CSM reactive vaccination campaign in high burden LGAs/Wards in Jigawa state led by NPHCDA.

Yellow Fever

Week 42

Suspected cases	Confirmed cases	Deaths	Number of States and LGAs affected
83	0	0	State: 22 LGA: 39

Year to date (week 1 – 42)

Suspected cases		Confirmed cases		Deaths		CFR	
2022	2023	2022	2023	2022	2023	2022	2023
1658	2412	0	24	10	9	0.6%	0.4%

Figure 5: Number of suspected and confirmed cases of Yellow Fever, Nigeria, weeks 1 – 42, 2023

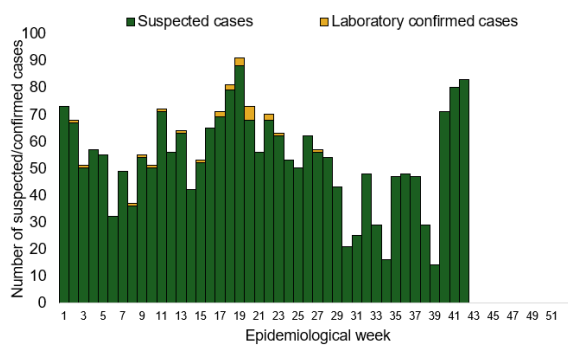
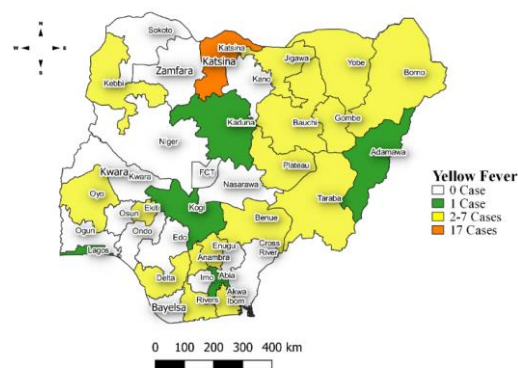


Figure 6: Location of suspected cases of Yellow Fever by States, Nigeria, week 42, 2023



Key points

- There were 2412 suspected cases of Yellow Fever (YF) reported from 39 LGAs in 22 states. There was no laboratory confirmed case and no death was recorded.

Actions

To date:

- National YF multi-partner Technical Working Group (TWG) continues to coordinate activities across states.
- Daily monitoring and analysis of surveillance data across the country to guide response activities.

Cholera

Week 42

Suspected cases	Confirmed cases	Deaths	Number of States and LGAs affected
19	0	0	State: 1 LGA: 2

Year to date (week 1 – 42)

Suspected cases		Confirmed cases		Deaths		CFR	
2022	2023	2022	2023	2022	2023	2022	2023
13154	3438	0	232	347	108	2.6%	3.1%

Figure 7: Number of suspected and confirmed cases of Cholera, Nigeria, weeks 1 – 42, 2023

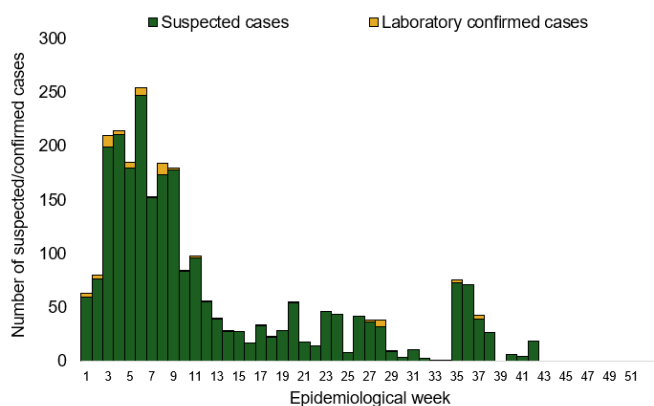
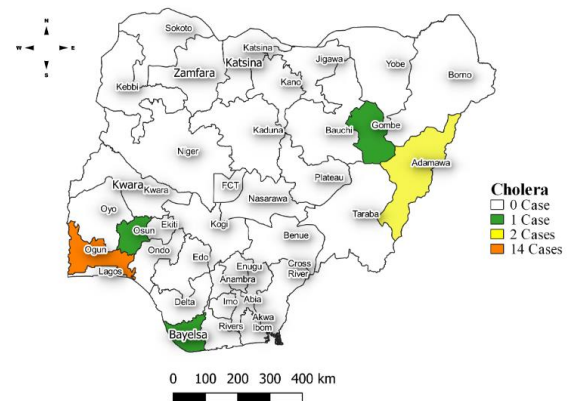


Figure 8: Location of suspected cases of Cholera by State, Nigeria, week 42, 2023



Key points

- There were 19 suspected cases of Cholera reported from two LGAs in Ogun state. There was no laboratory confirmed case and no death was recorded

Actions To date

- National Cholera Multi-Sectoral Technical Working Group (TWG) is monitoring all states and supporting affected states.
- Ongoing surveillance in all states through the routine Integrated Disease Surveillance and Response (IDSR) and Event Based Surveillance (EBS).
- Continuous construction of sanitation and hygiene facilities with boreholes in cholera hotspots • Conducted WASH Sector review workshop.

Measles

Week 42

Suspected cases	Confirmed cases	Deaths	Number of States and LGAs affected
65	6	0	State: 7 LGA: 38

Year to date (week 1 – 42)

Suspected cases		Confirmed cases		Deaths		CFR	
2022	2023	2022	2023	2022	2023	2022	2023
56052	17583	3486	1472	314	81	0.6%	0.5%

Figure 9: Number of suspected and confirmed cases of Measles, Nigeria, weeks 1 – 42, 2023.

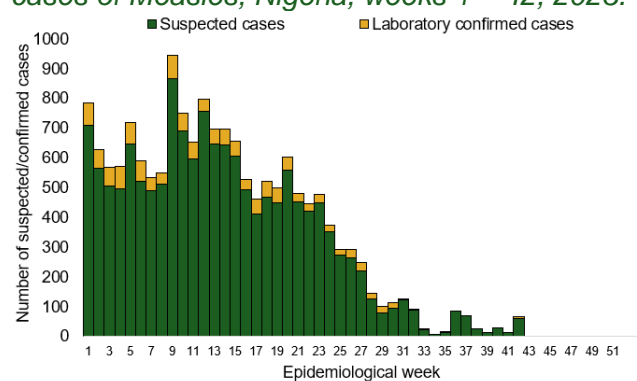
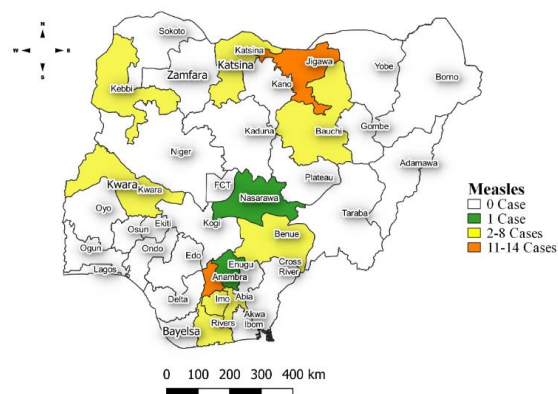


Figure 10: Location of suspected cases of Measles by State, Nigeria, week 42, 2023



Key points

- There were 65 suspected cases of Measles reported from 38 LGAs in seven states. There were six laboratory confirmed cases and no death was recorded.

Actions

To date

- National Measles TWG is closely monitoring measles surveillance data and providing feedback to relevant agencies and development partners.
- Ongoing weekly surveillance and laboratory data harmonisation.

Mpox

Week 42

Suspected cases	Confirmed cases	Deaths	Number of States and LGAs affected
21	2	0	State: 8 LGA: 15

Year to date (week 1 – 42)

Suspected cases		Confirmed cases		Deaths		CFR	
2022	2023	2022	2023	2022	2023	2022	2023
1467	998	588	82	7	2	0.4%	0.2%

Figure 11: Number of suspected and confirmed cases of Mpox, Nigeria, weeks 1– 42, 2023.

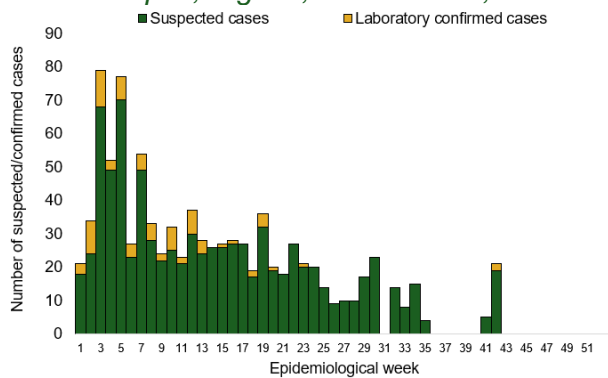
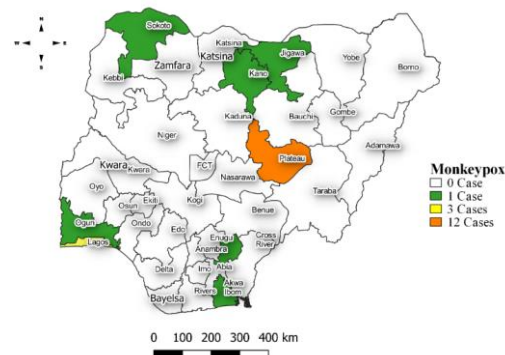


Figure 12: Location of suspected cases of Mpox by State, Nigeria, week 42, 2023



Key points

- There were 21 suspected cases of Mpox reported from 15 LGAs in eight states. There were two laboratory confirmed cases and no death was recorded.

Actions

To date

- National Mpox Technical Working Group (TWG) is monitoring activities in all states.
- Providing offsite subnational support to resolve issues in reporting States

Acute Flaccid Paralysis (AFP)

Week 42

Suspected cases	Confirmed cases	Deaths	Number of States and LGAs affected
116	0	0	State: 23 + FCT LGA: 73

Year to date (week 1 – 42)

Suspected cases		Confirmed cases		Deaths		CFR	
2022	2023	2022	2023	2022	2023	2022	2023
6383	7720	0	0	7	0	0.11%	0%

Figure 13: Number of suspected and confirmed cases of AFP, Nigeria, weeks 1 – 42, 2023

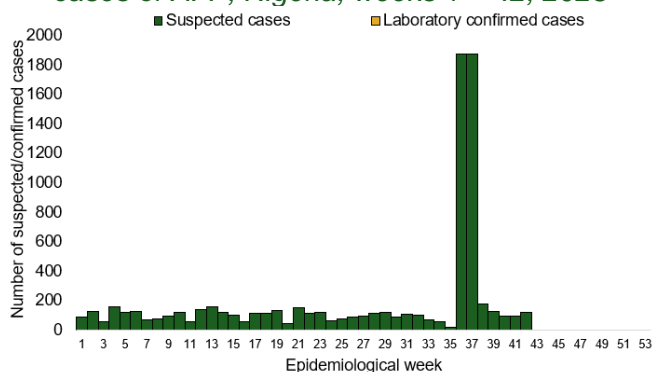
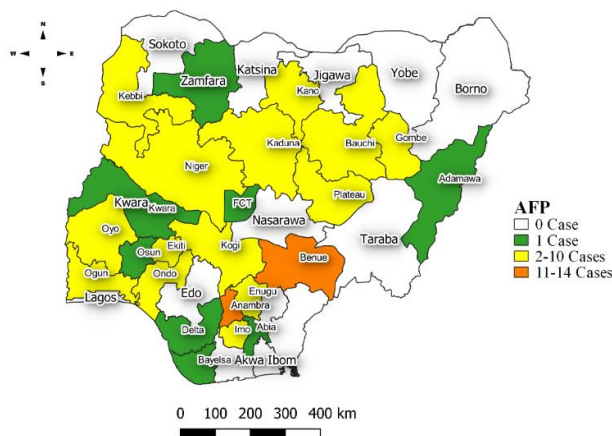


Figure 14: Location of suspected cases of AFP by State, Nigeria, week 42, 2023



Key points

- There were 116 suspected cases of AFP reported from 73 LGAs in 23 states and FCT. There was no laboratory confirmed case and no death was recorded.

National Influenza Sentinel Surveillance

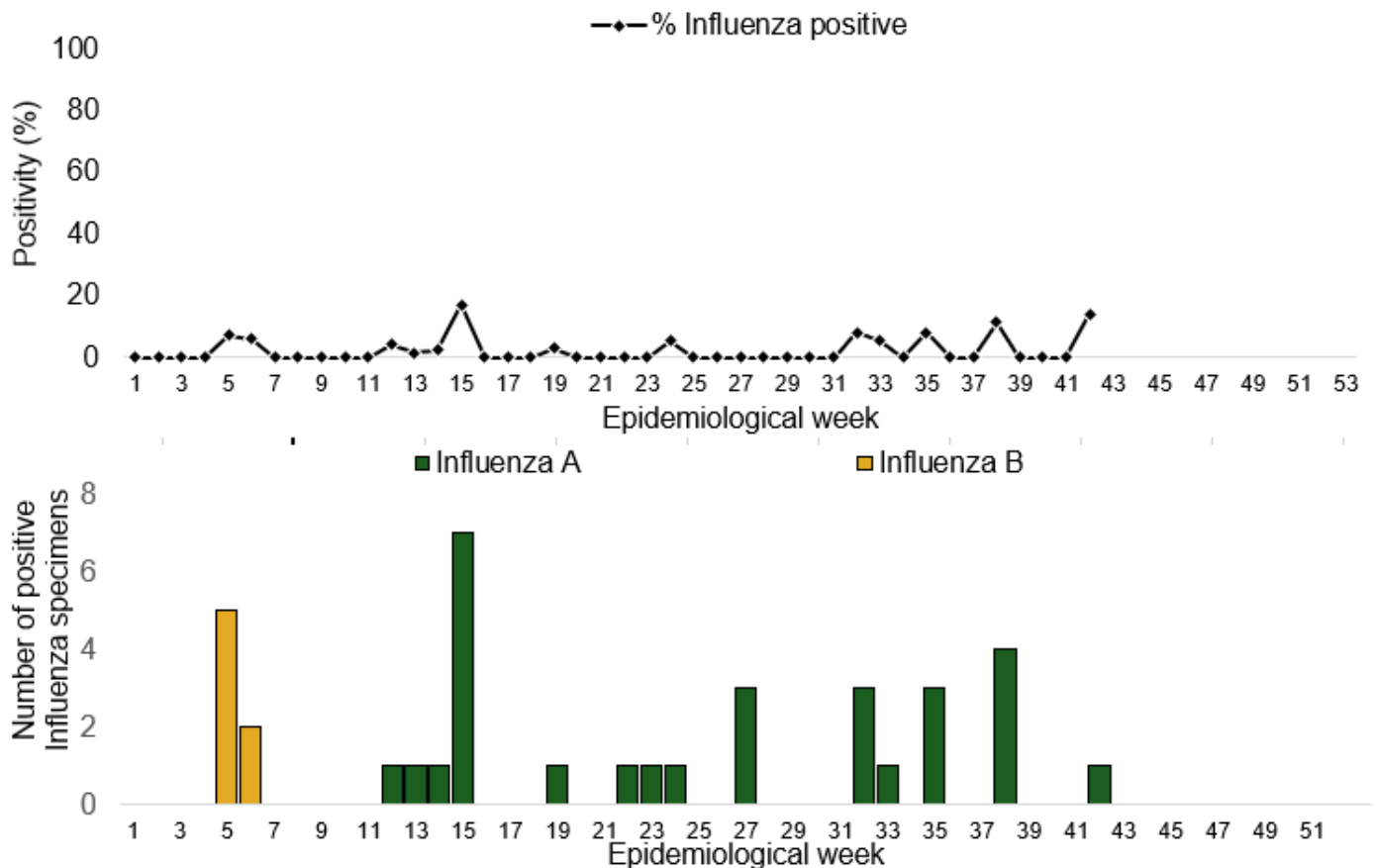
Year to date (week 1 – 42)

Suspected cases	Suspected ILI	Suspected SARI	Total Confirmed Cases	Confirmed cases by type	
				Influenza A	Influenza B
1181	791	390	38 (3.2%)	30(78.4%)	8(21.6%)

Week 42

Suspected Cases	Confirmed Cases	Confirmed Case by type	
		Influenza A	Influenza B
7	1	1	0

Figure 15: Number of influenza positive specimens by type and percentage positive by epidemiological week, 2023.



Coronavirus Disease (COVID-19)

Week 42

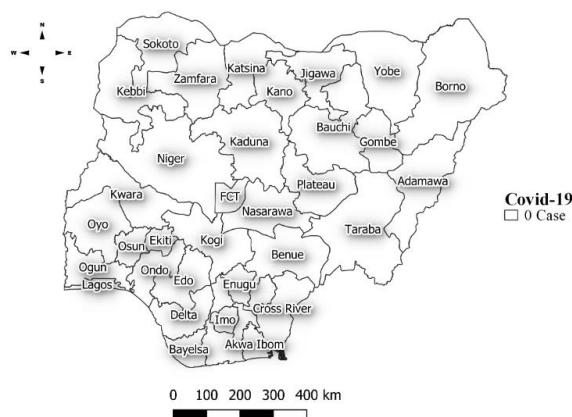
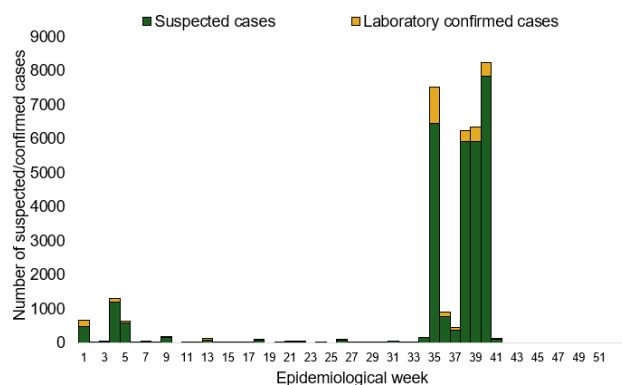
Suspected cases	Confirmed cases	Deaths	Number of States and LGAs affected
0	0	0	State: 0 LGA: 0

Year to date (Week 1- 42)

Test conducted	Confirmed cases	Deaths	Number of States and LGAs affected
64675	608	1	State: 30 + FCT LGA: 65

Figure 16: Epidemic curve of confirmed cases of COVID-19, Nigeria, week 42, 2023

Figure 17: Location of **confirmed** cases of COVID-19 by State, Nigeria, as at week 42, 2023



Key points

- There was no case reported for the week.

Actions

To date:

- Multi-sectoral Public Health Emergency Operation Centres (PHEOC) activated at the National and affected States
- Engagement meetings with state teams on the ongoing response, Sitrep reporting and Ag-RDT data harmonization, challenges, and way forward.
- Mainstreaming of COVID-19 response activities into routine public health interventions such as surveillance, risk communication, testing etc.

Diphtheria

Week 42

Suspected cases	Confirmed cases	Deaths	Number of States and LGAs affected
656	478	7	State: 5 LGA: 35

Year to date (week 1 – 42)

Suspected cases		Confirmed cases		Deaths		CFR	
2022	2023	2022	2023	2022	2023	2022	2023
123	15553	24	9932	17	533	13.8%	3.4%

Figure 18: Number of suspected and confirmed cases of Diphtheria, Nigeria, weeks 1 – 42, 2023

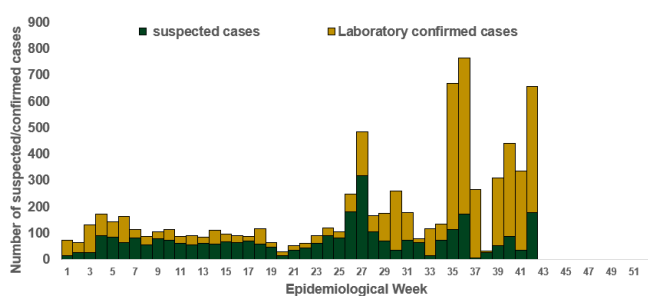
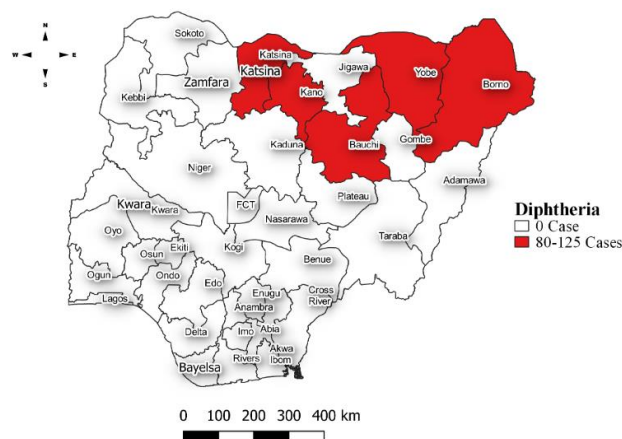


Figure 19: Location of suspected cases of Diphtheria by State, Nigeria, week 42, 2023



Key points

- There were 656 suspected cases of Diphtheria reported from 35 LGAs in five states. There were 478 confirmed cases, and seven deaths were recorded.

Actions To date

- National Diphtheria Technical Working Group (TWG) is monitoring activities in all states.
- Harmonisation of surveillance and laboratory data from across states and laboratories.
- Provision of off-site surveillance support to affected States.

Event Based Surveillance (EBS)

Week 42

Call Summary per Call Hub as of week 42, 2023

Call Hubs	NCDC	GLO	Total
Successful Calls	449	0	449
Failed Calls	13	0	13

Number of Received/Resolved Health Declaration calls/emails for week 42.

Calls	Emails	WhatsApp/texts
0	1	8

Disease conditions and events of public health importance captured as signals for the reporting week 42, 2023.

Number of Signals Category by Epi Week																																																	
S/N	Epi Week	1	2	3	4	5	6	7	8	9	10	11	12	13	14	15	16	17	18	19	20	21	22	23	24	25	26	27	28	29	30	31	32	33	34	35	36	37	38	39	40	41	42						
1	COVID19	0	0	0	0	0	0	0	0	0	0	0	0	0	0	0	0	0	0	0	0	0	0	0	0	0	0	0	0	0	0	0	0	0	0	0	0	0	0	0	0	0	0	0	0	0			
2	Lassa Fever	0	1	0	1	0	0	0	0	0	0	0	0	0	0	0	0	0	0	0	0	0	0	0	1	0	0	0	0	0	0	0	0	0	0	0	0	0	0	0	0	0	0	0	0	0	0		
3	Yellow Fever	0	0	0	0	0	0	0	0	0	0	0	0	0	0	0	0	0	0	0	0	0	0	0	0	0	0	0	0	0	0	0	0	0	0	0	0	0	0	0	0	0	0	0	0	0	0		
4	CSM	0	0	0	0	0	0	0	0	0	0	0	1	0	0	0	0	0	0	0	0	0	0	0	0	0	0	0	0	0	0	0	0	0	0	0	0	0	0	0	0	0	0	0	0	0	0		
5	Cholera	0	0	1	0	0	0	0	0	0	0	0	0	0	0	0	0	0	0	0	0	0	0	0	0	0	0	0	0	0	0	0	0	0	0	0	0	0	0	0	0	0	0	0	0	0	0		
6	Monkey Pox	1	0	0	0	0	0	0	0	0	0	0	0	0	0	0	0	0	0	0	0	0	0	0	0	0	0	0	0	0	0	0	0	0	0	0	0	0	0	0	0	0	0	0	0	0	0		
7	Measles & Rubella	0	0	0	0	0	0	0	0	0	0	0	0	0	0	0	0	0	0	0	0	0	0	0	0	0	0	0	0	0	0	0	0	0	0	0	0	0	0	0	0	0	0	0	0	0	0	0	
8	One Health Related Signals	0	0	0	0	0	0	0	0	0	0	0	0	0	0	0	0	0	0	0	0	0	0	0	0	0	0	0	0	0	0	0	0	0	0	0	0	0	0	0	0	0	0	0	0	0	0	0	
9	Unexplained cluster of illness/ death in humans	0	0	0	0	0	0	0	0	0	0	0	0	1	1	0	0	0	0	0	0	0	0	0	0	0	0	0	0	0	0	0	0	0	0	0	0	0	0	0	0	0	0	0	0	0	0	0	0
10	Disease or events of international or National Concern	0	0	0	0	0	0	0	0	0	0	0	0	0	0	0	0	0	0	0	0	0	0	0	0	0	0	0	0	0	0	0	0	0	0	0	0	0	0	0	0	0	0	0	0	0	0	0	0
11	Others	0	0	5	1	0	1	0	0	0	0	0	0	0	0	0	0	0	0	0	0	0	0	1	1	0	2	0	0	1	0	0	0	1	1	0	0	0	0	1	1	0	1	0	1	0	1	0	
TOTAL		1	1	6	1	0	1	0	0	0	0	0	2	1	0	0	0	0	0	0	0	0	1	2	0	2	0	0	0	0	0	0	1	1	0	0	0	4	1	0	1	0	1	0	1	1			

Key points

For the reporting week 42:

- 449 Calls were successfully routed to agents and answered.
- 13 calls not routed to agents (Failed call)
- 462 total number of calls (successful and failed)
- Percentage of failed to total inbound calls 2.8%.
- 1 signal picked and escalated (suspected diphtheria case in Lagos state)

For week 1 – 42

- 15,154 calls successfully routed to agents and answered
- 3,403 calls not routed to agents (Failed call)
- 18,557 total inbound calls recorded
- Percentage of failed to total inbound calls: 18.3%
- 30 Signals picked and escalated to 36 states and FCT

Categories of Calls

- Report of health conditions
- Health Declaration form-related queries
- Inquiries on Diphtheria symptoms, treatment, and Vaccine
- Inquiries on yellow fever vaccine
- Inquiries on Lassa fever vaccine
- Inquiries on malaria vaccine
- General inquiries
- Hoax call and others