



# Nigeria Centre for Disease Control and Prevention

Protecting the health of Nigerians

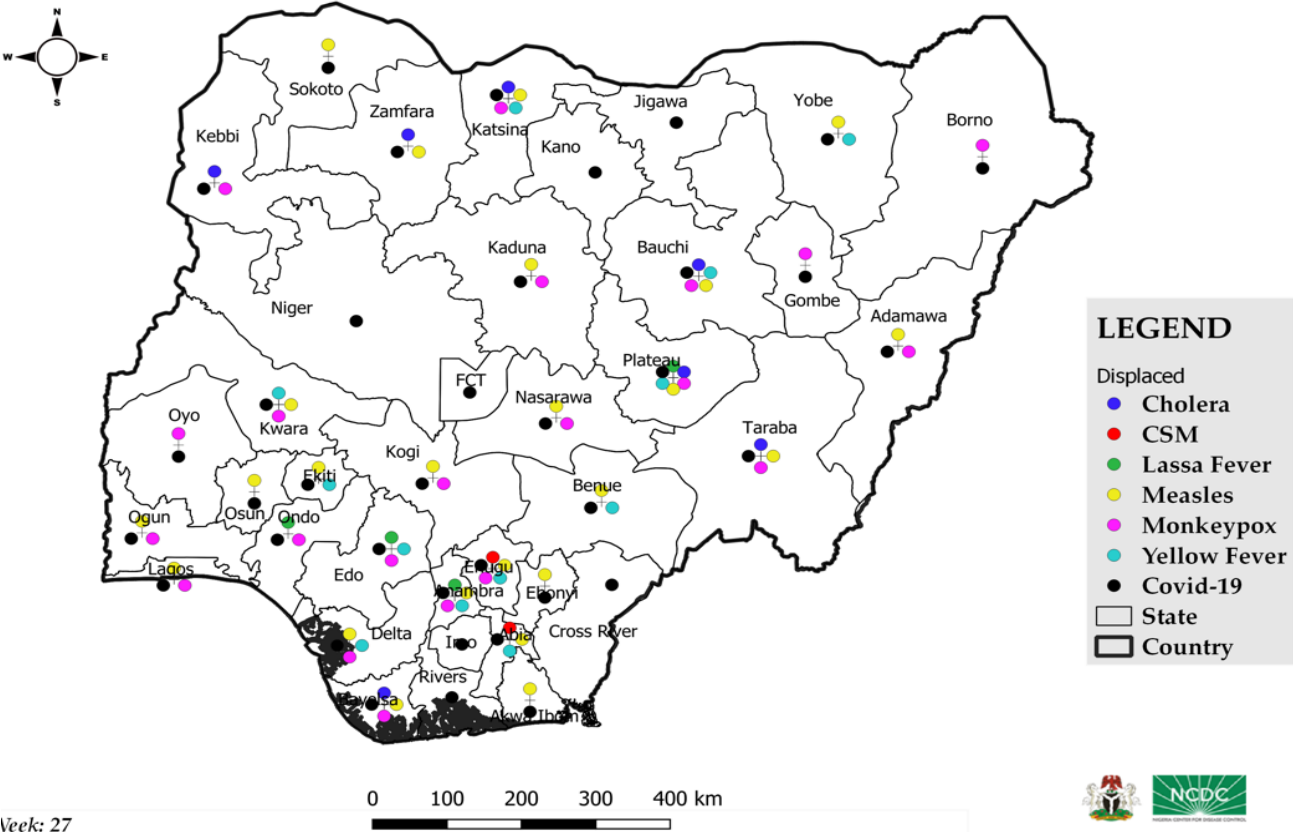
## Weekly Epidemiological Report Week 40: 2<sup>nd</sup> – 8<sup>th</sup> October, 2023

### Summary of Incidents

**Ongoing incidents**  
2

Ongoing incidents are defined as confirmed cases where a national EOC or equivalent has been activated (EOC is currently activated for COVID-19)

Other incidents are those with confirmed cases for which EOC is not activated



Week: 27



Data Source: SITAware

## Summary

Week 40: 2<sup>nd</sup> – 8<sup>th</sup> October, 2023

Lassa Fever <sup>1,2</sup>	Cerebrospinal Meningitis (CSM) <sup>1,4</sup>	Yellow Fever <sup>1,4</sup>
67 Suspected case(s)	6 Suspected case(s)	71 Suspected case(s)
5 Confirmed case(s)	0 Confirmed case(s)	0 Confirmed case(s)
3 Death(s)	0 Death(s)	0 Death(s)
Cholera <sup>1,4</sup>	Measles <sup>1,4</sup>	Mpox <sup>1,4</sup>
6 Suspected case(s)	30 Suspected case(s)	0 Suspected case(s)
0 Confirmed case(s)	0 Confirmed case(s)	0 Confirmed case(s)
0 Death(s)	0 Death(s)	0 Death(s)
Acute Flaccid Paralysis (AFP) <sup>1,4</sup>	National Sentinel influenza surveillance <sup>5</sup>	Coronavirus Disease <sup>1,</sup>
91 Suspected case(s)	20 Suspected case(s)	8240 Suspected case(s)
0 Confirmed case(s)	0 Confirmed case(s)	400 Confirmed case(s)
		0 Death(s)
Diphtheria <sup>1,4</sup>		
440 Suspected case(s)		
352 Confirmed case(s)		
1 Death(s)		

- Information for this disease was retrieved from the Technical Working Group and Situation Reports
- Case Fatality Rate (CFR) for this disease is reported for confirmed cases only
- CFR for this disease is reported for total cases i.e. suspected + confirmed
- Information for sentinel influenza was retrieved from the laboratory

## Lassa Fever

### Week 40

Suspected cases	Confirmed cases	Deaths	Number of States and LGAs affected
67	5	3	State: 12 LGA: 17

### Year to date (week 1 – 40)

Suspected cases		Confirmed cases		Deaths		CFR	
2022	2023	2022	2023	2022	2023	2022	2023
6884	7621	937	1086	178	185	19%	17%

Figure 1: Number of suspected and confirmed cases of Lassa Fever, Nigeria, Weeks 1 – 40, 2023

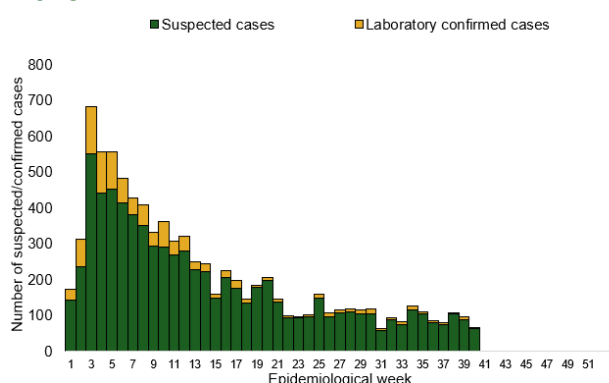
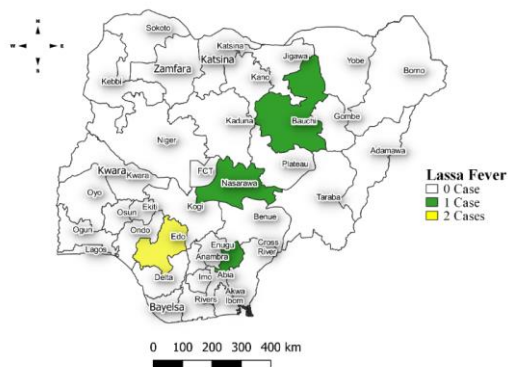


Figure 2: Location of confirmed cases of Lassa Fever by State, Nigeria, week 40, 2023



### Key points

- There were 67 suspected cases of Lassa Fever reported from 17 LGAs in 12 states. There were five laboratory confirmed cases reported from five LGAs in four states and three deaths were recorded.

### Actions

#### To date:

- National Lassa fever multi-partner, multi-sectoral Technical Working Group (TWG) continues to coordinate the response activities at all levels
- Conducted the 2023 Lassa Fever After Action Review
- First Draft of protocol for identification and management of LF in pregnant women completed
- Piloting of Epidemic Ready Primary Health Care (ERPHC) program in two states

## Cerebrospinal Meningitis (CSM)

### Week 40

Suspected cases	Confirmed cases	Deaths	Number of States and LGAs affected
6	0	0	State: 4 LGA: 4

### Year to date (week 1 – 40)

Suspected cases		Confirmed cases		Deaths		CFR	
2022	2023	2022	2023	2022	2023	2022	2023
795	2500	0	315	101	158	12.7%	6.3%

Figure 3: Number of suspected and confirmed cases of CSM, Nigeria, weeks 1 – 40, 2023

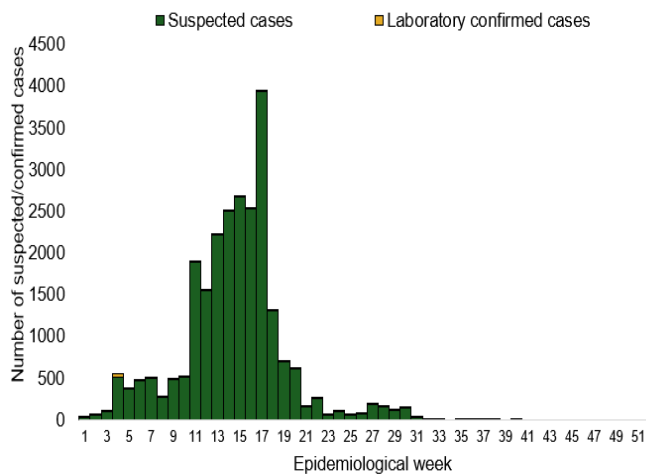
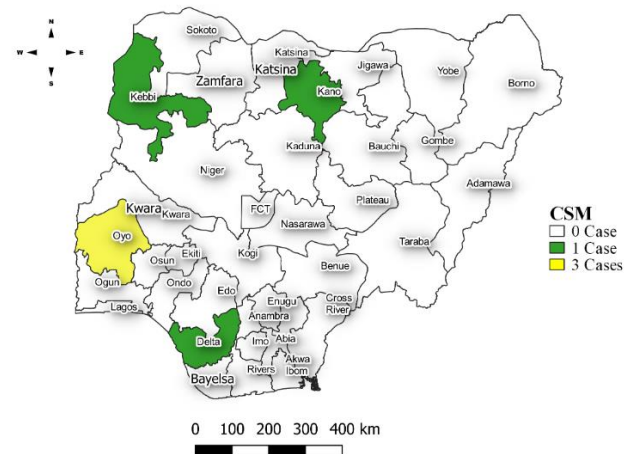


Figure 4: Location of suspected cases of CSM by State, Nigeria, week 40, 2023



### Key points

- There were six suspected cases of Cerebrospinal meningitis (CSM) reported from four LGAs in four states. There was no confirmed case, and no death was reported.

### Actions

#### To date:

- National CSM TWG meets weekly to review reports from states and plan appropriately.
- Monitoring of epidemiological trend to guide plans for reactive vaccination campaigns,
- Implementation of CSM reactive vaccination campaign in high burden LGAs/Wards in Jigawa state led by NPHCDA.

## Yellow Fever

### Week 40

Suspected cases	Confirmed cases	Deaths	Number of States and LGAs affected
71	0	0	State: 21 LGA: 39

### Year to date (week 1 – 40)

Suspected cases		Confirmed cases		Deaths		CFR	
2022	2023	2022	2023	2022	2023	2022	2023
1610	2249	0	24	10	9	0.6%	0.4%

Figure 5: Number of suspected and confirmed cases of Yellow Fever, Nigeria, weeks 1 – 40, 2023

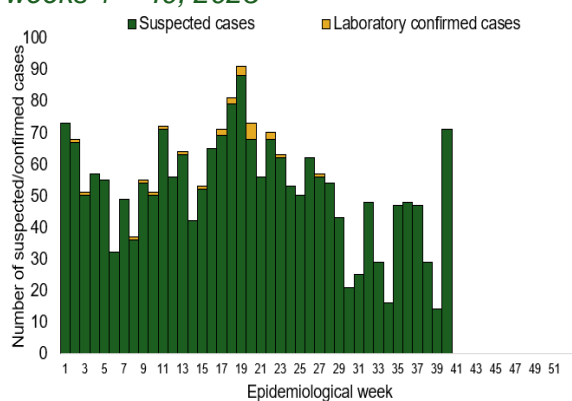
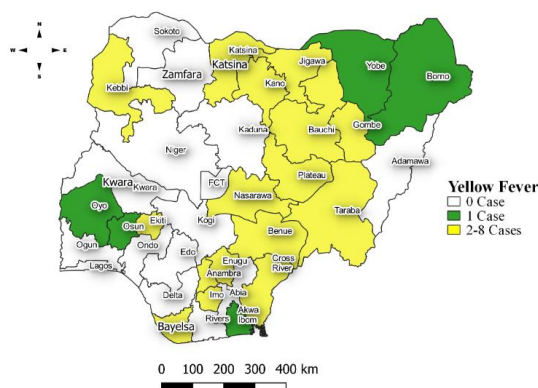


Figure 6: Location of suspected cases of Yellow Fever by States, Nigeria, week 40, 2023



### Key points

- There were 71 suspected cases of Yellow Fever (YF) reported from 39 LGAs in 21 states. There was no laboratory confirmed case and no death was recorded.

### Actions

#### To date:

- National YF multi-partner Technical Working Group (TWG) continues to coordinate activities across states.
- Daily monitoring and analysis of surveillance data across the country to guide response activities.

## Cholera

### Week 40

Suspected cases	Confirmed cases	Deaths	Number of States and LGAs affected
6	0	0	State: 4 LGA: 6

### Year to date (week 1 – 40)

Suspected cases		Confirmed cases		Deaths		CFR	
2022	2023	2022	2023	2022	2023	2022	2023
13011	3286	0	233	357	102	2.7%	3.1%

Figure 7: Number of suspected and confirmed cases of Cholera, Nigeria, weeks 1 – 40, 2023

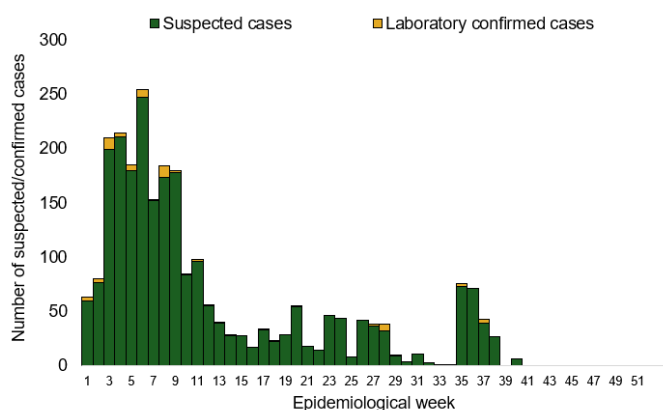
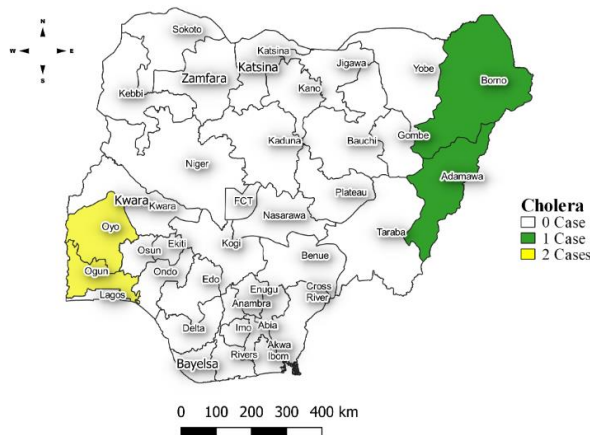


Figure 8: Location of suspected cases of Cholera by State, Nigeria, week 40, 2023



### Key points

- There were six suspected cases of Cholera reported from six LGAs in four states. There was no laboratory confirmed case and no death was recorded

### Actions To date

- National Cholera Multi-Sectoral Technical Working Group (TWG) is monitoring all states and supporting affected states.
- Ongoing surveillance in all states through the routine Integrated Disease Surveillance and Response (IDSR) and Event Based Surveillance (EBS).
- Continuous construction of sanitation and hygiene facilities with boreholes in cholera hotspots • Conducted WASH Sector review workshop.

## Measles

### Week 40

Suspected cases	Confirmed cases	Deaths	Number of States and LGAs affected
30	0	0	State: 8 LGA: 24

### Year to date (week 1 – 40)

Suspected cases		Confirmed cases		Deaths		CFR	
2022	2023	2022	2023	2022	2023	2022	2023
55898	17390	3486	1452	314	81	0.6%	0.5%

Figure 9: Number of suspected and confirmed cases of Measles, Nigeria, weeks 1 – 40, 2023.

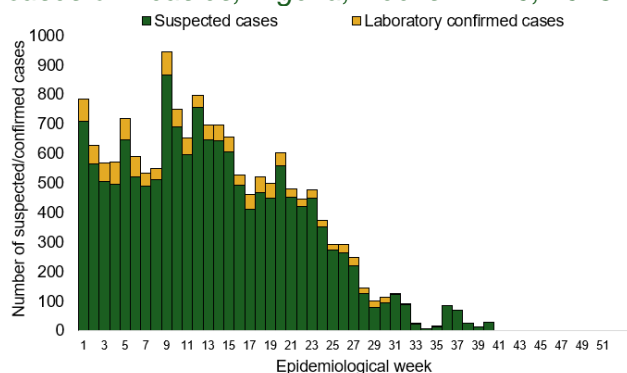
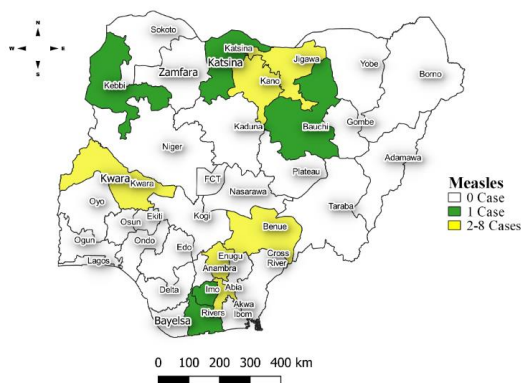


Figure 10: Location of suspected cases of Measles by State, Nigeria, week 40, 2023



### Key points

- There were 30 suspected cases of Measles reported from 24 LGAs in eight states. There was no laboratory confirmed case and no death was recorded.

### Actions

#### To date

- National Measles TWG is closely monitoring measles surveillance data and providing feedback to relevant agencies and development partners.
- Ongoing weekly surveillance and laboratory data harmonisation.

# Mpox

## Week 40

Suspected cases	Confirmed cases	Deaths	Number of States and LGAs affected
0	0	0	State: 0 LGA: 0

## Year to date (week 1 – 40)

Suspected cases		Confirmed cases		Deaths		CFR	
2022	2023	2022	2023	2022	2023	2022	2023
1182	914	481	80	7	2	0.6%	0.2%

Figure 11: Number of suspected and confirmed cases of Mpox, Nigeria, weeks 1– 40, 2023.

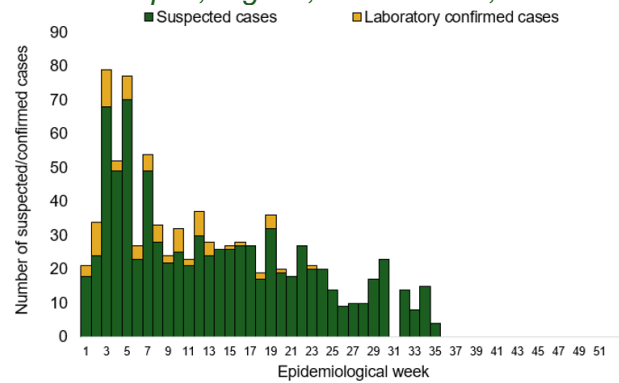
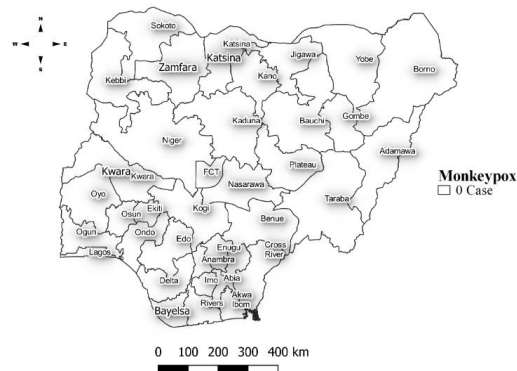


Figure 12: Location of suspected cases of Mpox by State, Nigeria, week 40, 2023



### Key points

- There was no case reported for the week.

### Actions

#### To date

- National Mpox Technical Working Group (TWG) is monitoring activities in all states.



## Acute Flaccid Paralysis (AFP)

### Week 40

Suspected cases	Confirmed cases	Deaths	Number of States and LGAs affected
91	0	0	State: 26 LGA: 37

### Year to date (week 1 – 40)

Suspected cases		Confirmed cases		Deaths		CFR	
2022	2023	2022	2023	2022	2023	2022	2023
6252	7514	0	0	7	0	0.11%	0%

Figure 13: Number of suspected and confirmed cases of AFP, Nigeria, weeks 1 – 40, 2023

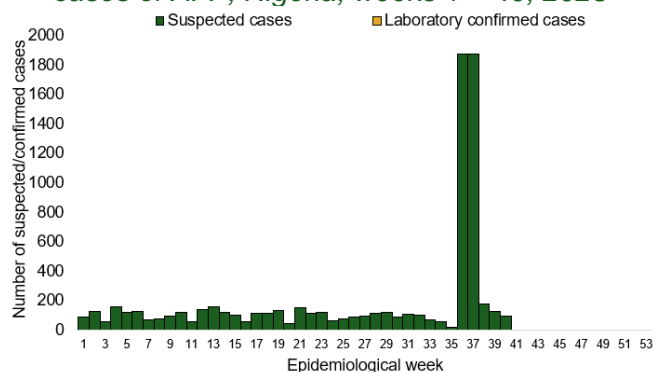
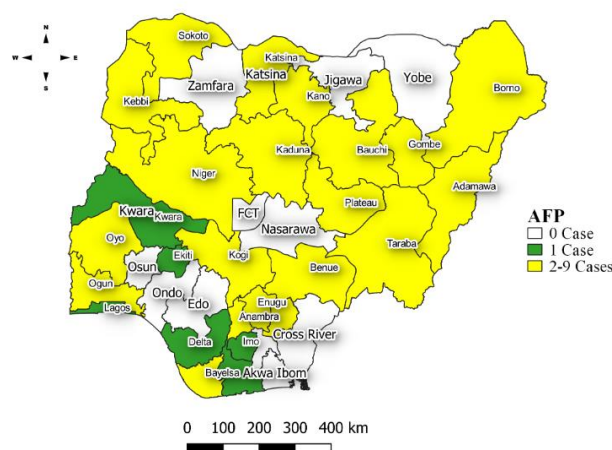


Figure 14: Location of suspected cases of AFP by State, Nigeria, week 40, 2023



### Key points

- There were 91 suspected cases of AFP reported from 37 LGAs in 26 states. There was no laboratory confirmed case and no death was recorded.

## National Influenza Sentinel Surveillance

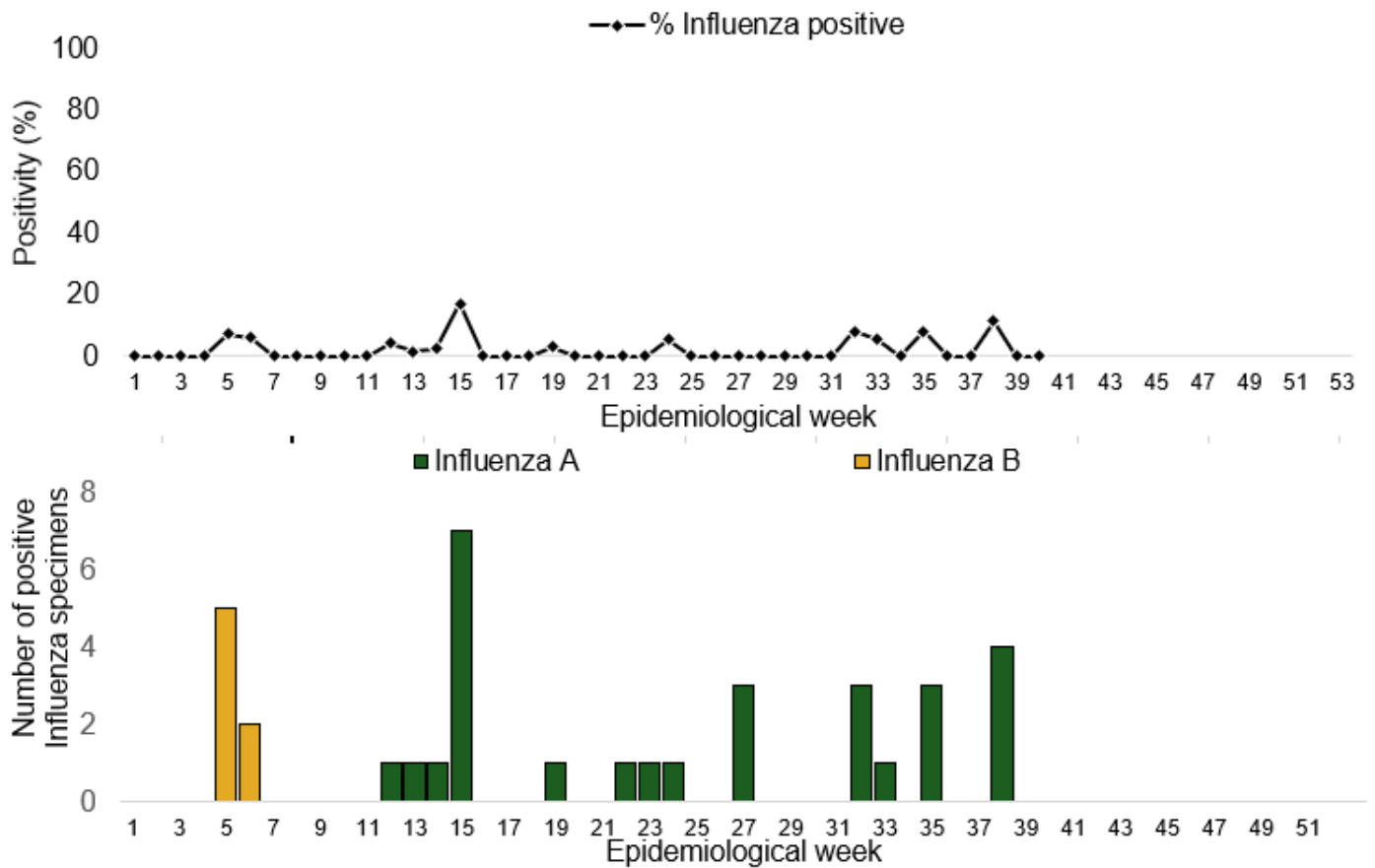
Year to date (week 1 – 40)

Suspected cases	Suspected ILI	Suspected SARI	Total Confirmed Cases	Confirmed cases by type	
				Influenza A	Influenza B
1138	750	388	37 (3.2%)	Influenza A	Influenza B
				29(78.4%)	8(21.6%)

Week 40

Suspected Cases	Confirmed Cases	Confirmed Case by type	
		Influenza A	Influenza B
20	0	0	0

Figure 15: Number of influenza positive specimens by type and percentage positive by epidemiological week, 2023.



## Coronavirus Disease (COVID-19)

### Week 40

Suspected cases	Confirmed cases	Deaths	Number of States and LGAs affected
8240	400	0	State: 6 + FCT LGA: 19

### Year to date (Week 1- 40)

Test conducted	Confirmed cases	Deaths	Number of States and LGAs affected
33393	829	1	State: 30 + FCT LGA: 65

Figure 16: Epidemic curve of confirmed cases of COVID-19, Nigeria, week 40, 2023

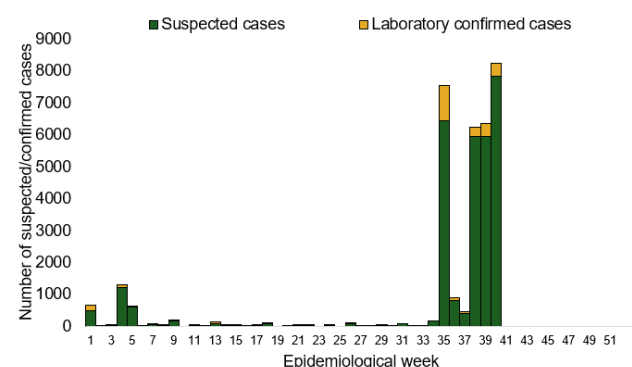
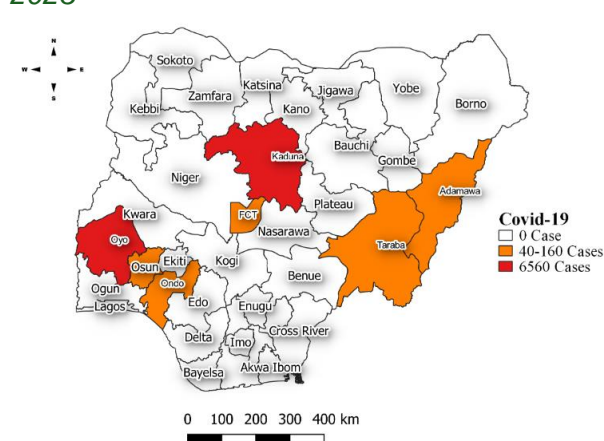


Figure 17: Location of confirmed cases of COVID-19 by State, Nigeria, as at week 40, 2023



### Key points

- There were 8240 suspected cases of Covid 19 reported from 19 LGAs in six states and FCT. There were 400 laboratory confirmed cases and no death was recorded.

### Actions

#### To date:

- Multi-sectoral Public Health Emergency Operation Centres (PHEOC) activated at the National and affected States
- Engagement meetings with state teams on the ongoing response, Sitrep reporting and Ag-RDT data harmonization, challenges, and way forward.
- Mainstreaming of COVID-19 response activities into routine public health interventions such as surveillance, risk communication, testing etc.

## Diphtheria

### Week 40

Suspected cases	Confirmed cases	Deaths	Number of States and LGAs affected
440	352	1	State: 7 LGA: 42

### Year to date (week 1 – 40)

Suspected cases		Confirmed cases		Deaths		CFR	
2022	2023	2022	2023	2022	2023	2022	2023
123	14359	24	9462	17	542	13.8%	3.8%

Figure 18: Number of suspected and confirmed cases of Diphtheria, Nigeria, weeks 1 – 40, 2023

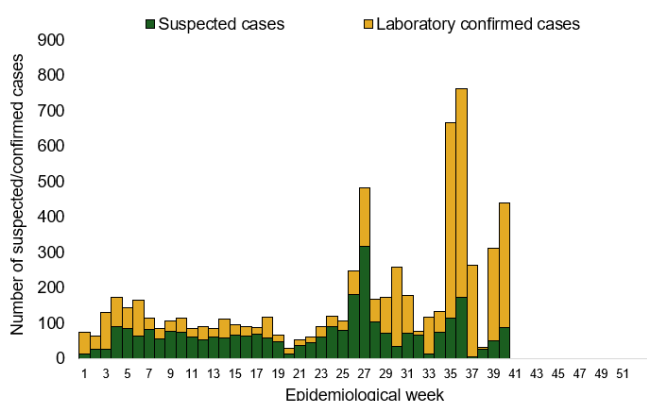
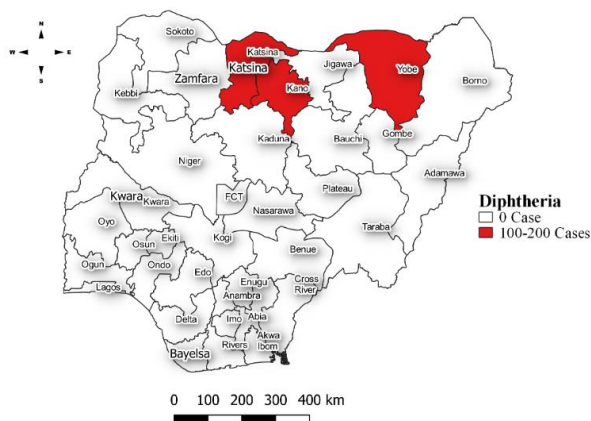


Figure 19: Location of suspected cases of Diphtheria by State, Nigeria, week 40, 2023



### Key points

- There were 440 suspected cases of Diphtheria reported from 42 LGAs in seven states. There were 352 confirmed cases, and one death was recorded.

### Actions To date

- National Diphtheria Technical Working Group (TWG) is monitoring activities in all states.

## Event Based Surveillance (EBS)

### Week 40

#### Call Summary per Call Hub as of week 40, 2023

Call Hubs	NCDC	GLO	Total
Successful Calls	212	0	212
Failed Calls	0	0	0

#### Number of Received/Resolved Health Declaration calls/emails for week 40.

Calls	Emails	WhatsApp/texts
4	3	2

#### Disease conditions and events of public health importance captured as signals for the reporting week 40, 2023.

Number of Signals Category by Epi Week																																																		
S/N	Epi Week	1	2	3	4	5	6	7	8	9	10	11	12	13	14	15	16	17	18	19	20	21	22	23	24	25	26	27	28	29	30	31	32	33	34	35	36	37	38	39	40									
1	COVID19	0	0	0	0	0	0	0	0	0	0	0	0	0	0	0	0	0	0	0	0	0	0	0	0	0	0	0	0	0	0	0	0	0	0	0	0	0	0	0	0	0	0							
2	Lassa Fever	0	1	0	1	0	0	0	0	0	0	0	0	0	0	0	0	0	0	0	0	0	1	0	0	0	0	0	0	0	0	0	0	0	0	0	0	0	0	0	0	0	0	0						
3	Yellow Fever	0	0	0	0	0	0	0	0	0	0	0	0	0	0	0	0	0	0	0	0	0	0	0	0	0	0	0	0	0	0	0	0	0	0	0	0	0	0	0	1	0	0	0	0					
4	CSM	0	0	0	0	0	0	0	0	0	0	0	0	1	0	0	0	0	0	0	0	0	0	0	0	0	0	0	0	0	0	0	0	0	0	0	0	0	0	1	0	0	0	0	0					
5	Cholera	0	0	1	0	0	0	0	0	0	0	0	0	0	0	0	0	0	0	0	0	0	0	0	0	0	0	0	0	0	0	0	0	0	0	0	0	0	0	0	0	0	0	0	0	0				
6	Monkey Pox	1	0	0	0	0	0	0	0	0	0	0	0	0	0	0	0	0	0	0	0	0	0	0	0	0	0	0	0	0	0	0	0	0	0	0	0	0	0	0	0	0	0	0	0	0	0			
7	Measles & Rubella	0	0	0	0	0	0	0	0	0	0	0	0	0	0	0	0	0	0	0	0	0	0	0	0	0	0	0	0	0	0	0	0	0	0	0	0	0	0	0	0	1	0	0	0	0	0			
8	One Health Related Signals	0	0	0	0	0	0	0	0	0	0	0	0	0	0	0	0	0	0	0	0	0	0	0	0	0	0	0	0	0	0	0	0	0	0	0	0	0	0	0	0	0	0	0	0	0	0	0		
9	Unexplained cluster of illness/ death in humans	0	0	0	0	0	0	0	0	0	0	0	0	1	1	0	0	0	0	0	0	0	0	0	0	0	0	0	0	0	0	0	0	0	0	0	0	0	0	0	0	0	0	0	0	0	0	0	0	0
10	Concern	0	0	0	0	0	0	0	0	0	0	0	0	0	0	0	0	0	0	0	0	0	0	0	0	0	0	0	0	0	0	0	0	0	0	0	0	0	0	0	0	0	0	0	0	0	0	0	0	0
11	Others	0	0	5	1	0	1	0	0	0	0	0	0	0	0	0	0	0	1	0	0	0	1	1	0	2	0	0	1	0	0	0	1	1	0	0	0	0	1	1	0	0	0	1	1	0	1	0	1	0
	<b>TOTAL</b>	<b>1</b>	<b>1</b>	<b>6</b>	<b>1</b>	<b>0</b>	<b>1</b>	<b>0</b>	<b>0</b>	<b>0</b>	<b>0</b>	<b>0</b>	<b>2</b>	<b>1</b>	<b>0</b>	<b>0</b>	<b>0</b>	<b>0</b>	<b>0</b>	<b>0</b>	<b>0</b>	<b>1</b>	<b>2</b>	<b>0</b>	<b>2</b>	<b>0</b>	<b>0</b>	<b>0</b>	<b>0</b>	<b>0</b>	<b>0</b>	<b>0</b>	<b>0</b>	<b>0</b>	<b>0</b>	<b>0</b>	<b>0</b>	<b>0</b>	<b>1</b>	<b>1</b>	<b>0</b>	<b>0</b>	<b>0</b>	<b>0</b>	<b>4</b>	<b>1</b>	<b>0</b>	<b>1</b>	<b>0</b>	

## Key points

For the reporting week 40:

- 212 Calls were successfully routed to agents and answered
- No Failed call recorded
- 212 total number of calls (successful and failed)
- Percentage of failed to total inbound calls 0.0%
- No signal picked

For week 1 – 40

- 14,436 calls successfully routed to agents and answered
- 3,362 calls not routed to agents (Failed call)
- 17,798 total inbound calls recorded
- Percentage of failed to total inbound calls: 18.9%
- 28 Signals picked and escalated to 36 states and FCT

### Categories of Calls

- Report of health conditions
- Health Declaration form-related queries
- Inquiries on Diphtheria symptoms, treatment, and Vaccine
- Inquiries on sexually transmitted disease
- Inquiries on yellow fever vaccine
- Inquiries on the Lassa fever vaccine
- General inquiries
- Hoax call and others