



**Nigeria Centre for Disease Control and Prevention**

*Protecting the health of Nigerians*

**Weekly Epidemiological Report**  
 Week 41: 9<sup>th</sup> – 15<sup>th</sup> October, 2023

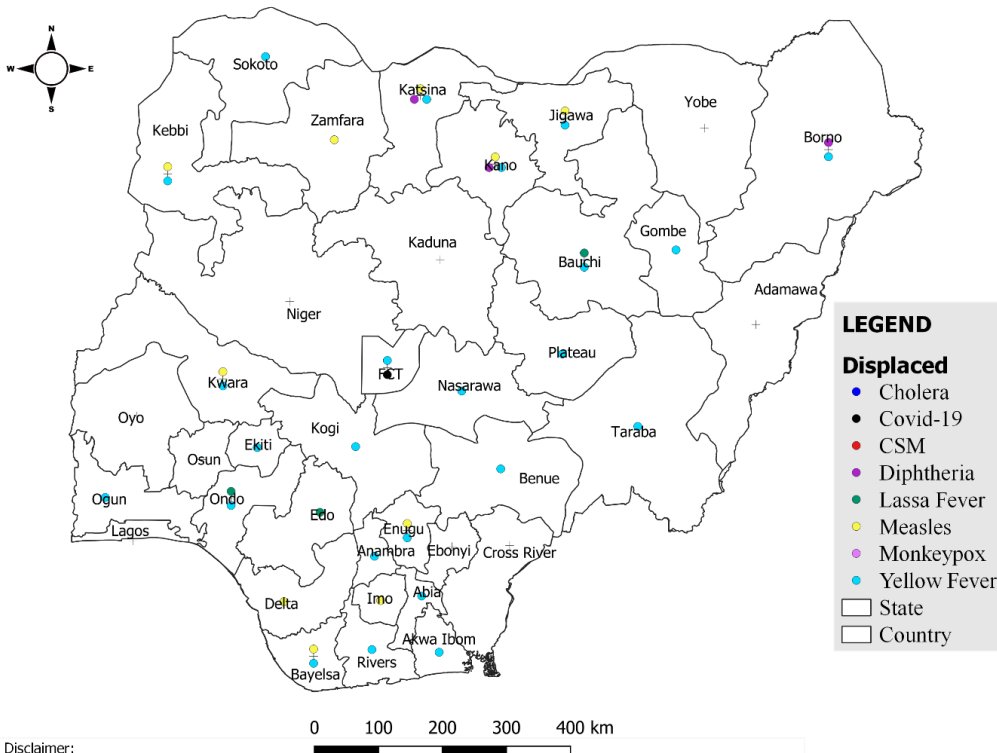
**Summary of Incidents**

**Ongoing incidents**

1

Ongoing incidents are defined as confirmed cases where a national EOC or equivalent has been activated (EOC is currently activated for COVID-19)

Other incidents are those with confirmed cases for which EOC is not activated



Data Source: SITAware

## Summary

Week 41: 9<sup>th</sup> – 15<sup>th</sup> October, 2023

Lassa Fever <sup>1,2</sup>	Cerebrospinal Meningitis (CSM) <sup>1,4</sup>	Yellow Fever <sup>1,4</sup>
103 Suspected case(s)	0 Suspected case(s)	80 Suspected case(s)
9 Confirmed case(s)	0 Confirmed case(s)	0 Confirmed case(s)
3 Death(s)	0 Death(s)	0 Death(s)
Cholera <sup>1,4</sup>	Measles <sup>1,4</sup>	Mpox <sup>1,4</sup>
5 Suspected case(s)	13 Suspected case(s)	5 Suspected case(s)
0 Confirmed case(s)	0 Confirmed case(s)	0 Confirmed case(s)
0 Death(s)	0 Death(s)	0 Death(s)
Acute Flaccid Paralysis (AFP) <sup>1,4</sup>	National Sentinel influenza surveillance <sup>5</sup>	Coronavirus Disease <sup>1,</sup>
90 Suspected case(s)	36 Suspected case(s)	123 Suspected case(s)
0 Confirmed case(s)	0 Confirmed case(s)	1 Confirmed case(s)
		0 Death(s)
Diphtheria <sup>1,4</sup>		
336 Suspected case(s)		
299 Confirmed case(s)		
2 Death(s)		

- Information for this disease was retrieved from the Technical Working Group and Situation Reports
- Case Fatality Rate (CFR) for this disease is reported for confirmed cases only
- CFR for this disease is reported for total cases i.e. suspected + confirmed
- Information for sentinel influenza was retrieved from the laboratory

## Lassa Fever

### Week 41

Suspected cases	Confirmed cases	Deaths	Number of States and LGAs affected
103	9	3	State: 11 LGA: 19

### Year to date (week 1 – 41)

Suspected cases		Confirmed cases		Deaths		CFR	
2022	2023	2022	2023	2022	2023	2022	2023
6981	7724	941	1095	178	188	18.9%	17.2%

Figure 1: Number of suspected and confirmed cases of Lassa Fever, Nigeria, Weeks 1 – 41, 2023

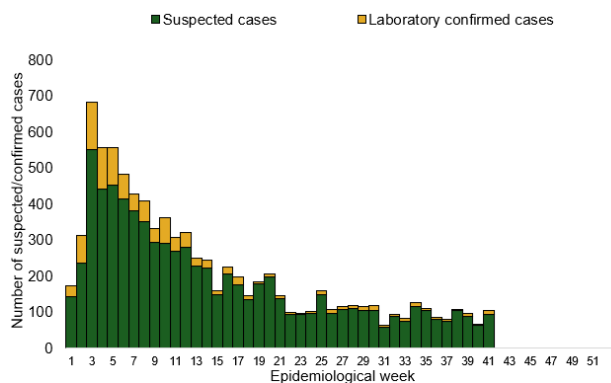
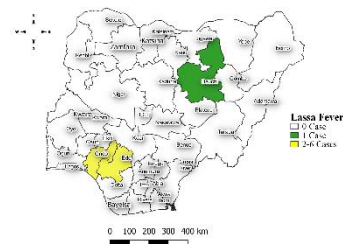


Figure 2: Location of **confirmed** cases of Lassa Fever by State, Nigeria, week 41, 2023



### Key points

- There were 103 suspected cases of Lassa Fever reported from 19 LGAs in 11 states. There were nine laboratory confirmed cases reported from seven LGAs in three states and three deaths were recorded.
- One new Healthcare worker was affected in the reporting week.

### Actions

#### To date:

- National Lassa fever multi-partner, multi-sectoral Technical Working Group (TWG) continues to coordinate the response activities at all levels
- Activation of the Lassa Fever EOC
- Deployed NRRT to 6 states – Bauchi, Benue, Ebonyi, Edo, Ondo & Taraba
- Coordinated a two-day LF Colloquium & workshop with support from UCL and Jhpiego
- Piloting of Epidemic Ready Primary Health Care (ERPHC) program in two states

## Cerebrospinal Meningitis (CSM)

### Week 41

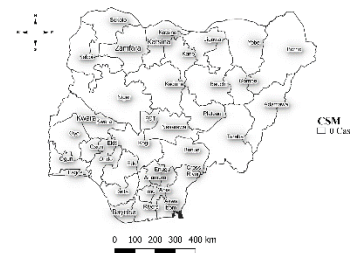
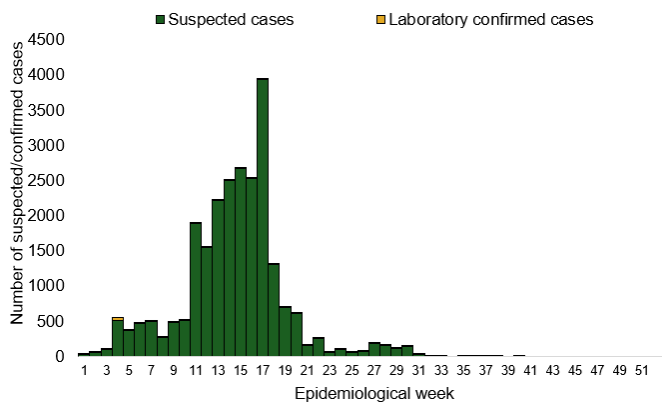
Suspected cases	Confirmed cases	Deaths	Number of States and LGAs affected
0	0	0	State: 0 LGA: 0

### Year to date (week 1 – 41)

Suspected cases		Confirmed cases		Deaths		CFR	
2022	2023	2022	2023	2022	2023	2022	2023
795	2500	0	315	101	158	12.7%	6.3%

Figure 3: Number of suspected and confirmed cases of CSM, Nigeria, weeks 1 – 41, 2023

Figure 4: Location of suspected cases of CSM by State, Nigeria, week 41, 2023



### Key points

- There was no case reported for the week.

### Actions

#### To date:

- National CSM TWG meets weekly to review reports from states and plan appropriately.
- Monitoring of epidemiological trend to guide plans for reactive vaccination campaigns,
- Implementation of CSM reactive vaccination campaign in high burden LGAs/Wards in Jigawa state led by NPHCDA.

## Yellow Fever

### Week 41

Suspected cases	Confirmed cases	Deaths	Number of States and LGAs affected
80	0	0	State: 23 + FCT LGA: 32

### Year to date (week 1 – 41)

Suspected cases		Confirmed cases		Deaths		CFR	
2022	2023	2022	2023	2022	2023	2022	2023
1610	2329	0	24	10	9	0.6%	0.4%

Figure 5: Number of suspected and confirmed cases of Yellow Fever, Nigeria, weeks 1 – 41, 2023

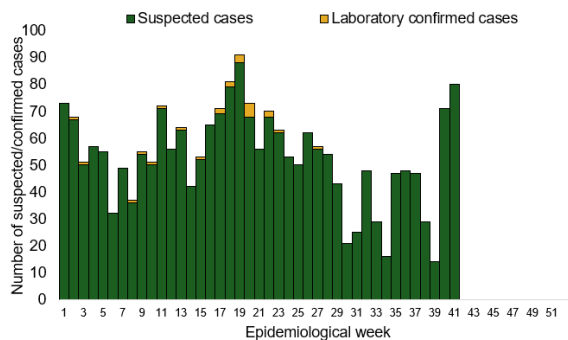
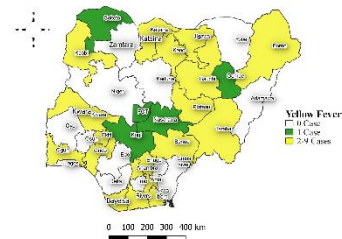


Figure 6: Location of suspected cases of Yellow Fever by States, Nigeria, week 41, 2023



### Key points

- There were 80 suspected cases of Yellow Fever (YF) reported from 33 LGAs in 23 states and FCT. There was no laboratory confirmed case and no death was recorded.

### Actions

#### To date:

- National YF multi-partner Technical Working Group (TWG) continues to coordinate activities across states.
- Daily monitoring and analysis of surveillance data across the country to guide response activities.

## Cholera

### Week 41

Suspected cases	Confirmed cases	Deaths	Number of States and LGAs affected
5	0	0	State: 2 LGA: 3

### Year to date (week 1 – 41)

Suspected cases		Confirmed cases		Deaths		CFR	
2022	2023	2022	2023	2022	2023	2022	2023
13011	3291	0	233	347	102	2.7%	3.1%

Figure 7: Number of suspected and confirmed cases of Cholera, Nigeria, weeks 1 – 41, 2023

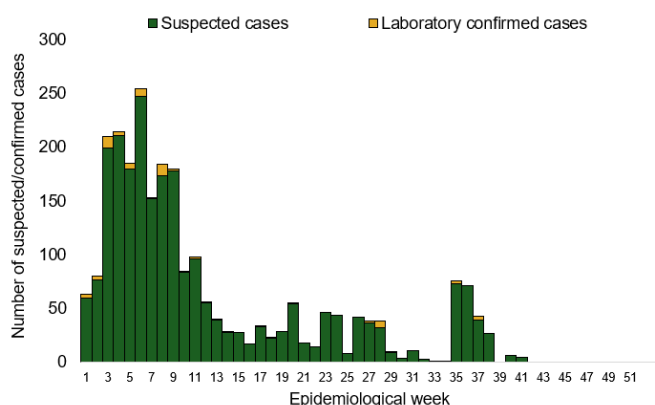
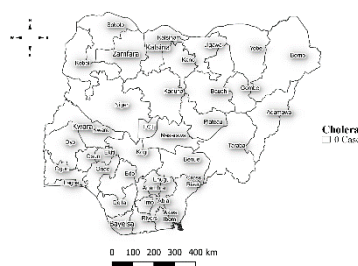


Figure 8: Location of suspected cases of Cholera by State, Nigeria, week 41, 2023



### Key points

- There were five suspected cases of Cholera reported from three LGAs in two states. There was no laboratory confirmed case and no death was recorded

### Actions

#### To date

- National Cholera Multi-Sectoral Technical Working Group (TWG) is monitoring all states and supporting affected states.
- Ongoing surveillance in all states through the routine Integrated Disease Surveillance and Response (IDSR) and Event Based Surveillance (EBS).
- Continuous construction of sanitation and hygiene facilities with boreholes in cholera hotspots • Conducted WASH Sector review workshop.

## Measles

### Week 41

Suspected cases	Confirmed cases	Deaths	Number of States and LGAs affected
13	0	0	State: 8 LGA: 13

### Year to date (week 1 – 41)

Suspected cases		Confirmed cases		Deaths		CFR	
2022	2023	2022	2023	2022	2023	2022	2023
55898	17403	3486	1452	314	81	0.6%	0.5%

Figure 9: Number of suspected and confirmed cases of Measles, Nigeria, weeks 1 – 41, 2023.

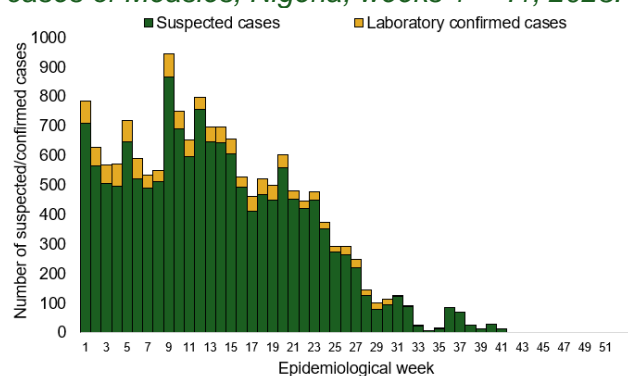
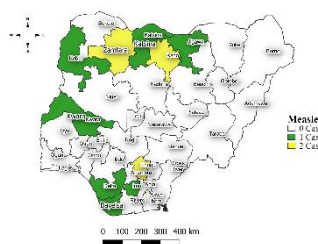


Figure 10: Location of suspected cases of Measles by State, Nigeria, week 41, 2023



### Key points

- There were 13 suspected cases of Measles reported from 13 LGAs in eight states. There was no laboratory confirmed case and no death was recorded.

### Actions

#### To date

- National Measles TWG is closely monitoring measles surveillance data and providing feedback to relevant agencies and development partners.
- Ongoing weekly surveillance and laboratory data harmonisation.

## Mpox

### Week 41

Suspected cases	Confirmed cases	Deaths	Number of States and LGAs affected
5	0	0	State: 4 LGA: 4

### Year to date (week 1 – 41)

Suspected cases		Confirmed cases		Deaths		CFR	
2022	2023	2022	2023	2022	2023	2022	2023
1359	977	555	80	7	2	0.5%	0.2%

Figure 11: Number of suspected and confirmed cases of Mpox, Nigeria, weeks 1– 41, 2023.

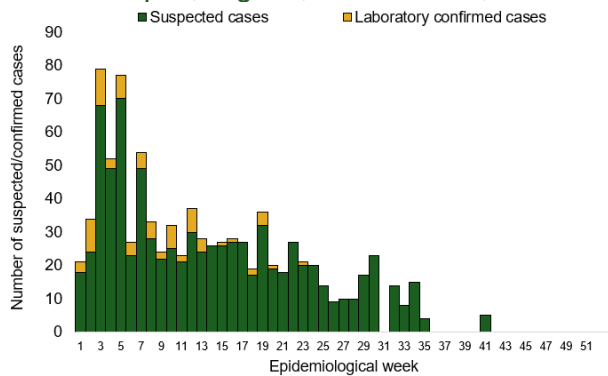
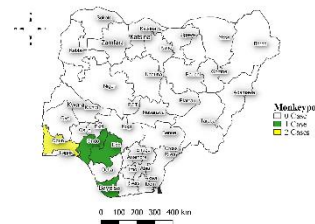


Figure 12: Location of suspected cases of Mpox by State, Nigeria, week 41, 2023



### Key points

- There were five suspected cases of Mpox reported from four LGAs in four states. There was no laboratory confirmed case and no death was recorded.

### Actions

#### To date

- National Mpox Technical Working Group (TWG) is monitoring activities in all states.
- Providing offsite subnational support to resolve issues in reporting States



## Acute Flaccid Paralysis (AFP)

### Week 41

Suspected cases	Confirmed cases	Deaths	Number of States and LGAs affected
90	0	0	State: 23 + FCT LGA: 52

### Year to date (week 1 – 41)

Suspected cases		Confirmed cases		Deaths		CFR	
2022	2023	2022	2023	2022	2023	2022	2023
6252	7604	0	0	7	0	0.1%	0%

Figure 13: Number of suspected and confirmed cases of AFP, Nigeria, weeks 1 – 41, 2023

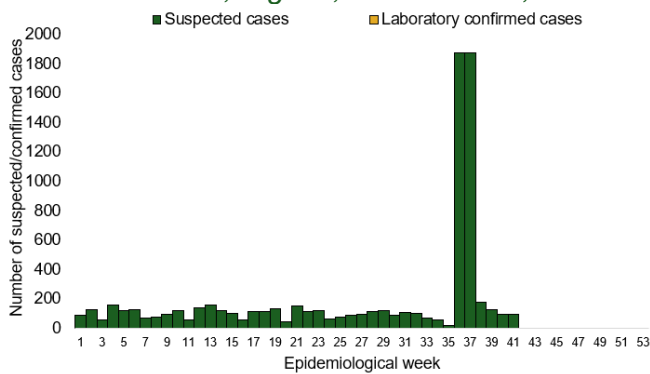
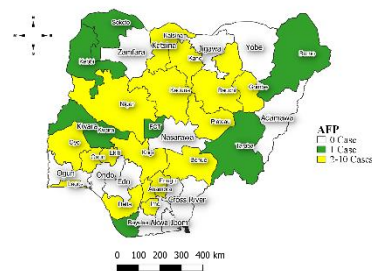


Figure 14: Location of suspected cases of AFP by State, Nigeria, week 41, 2023



### Key points

- There were 90 suspected cases of AFP reported from 52 LGAs in 23 states and FCT. There was no laboratory confirmed case and no death was recorded.

## National Influenza Sentinel Surveillance

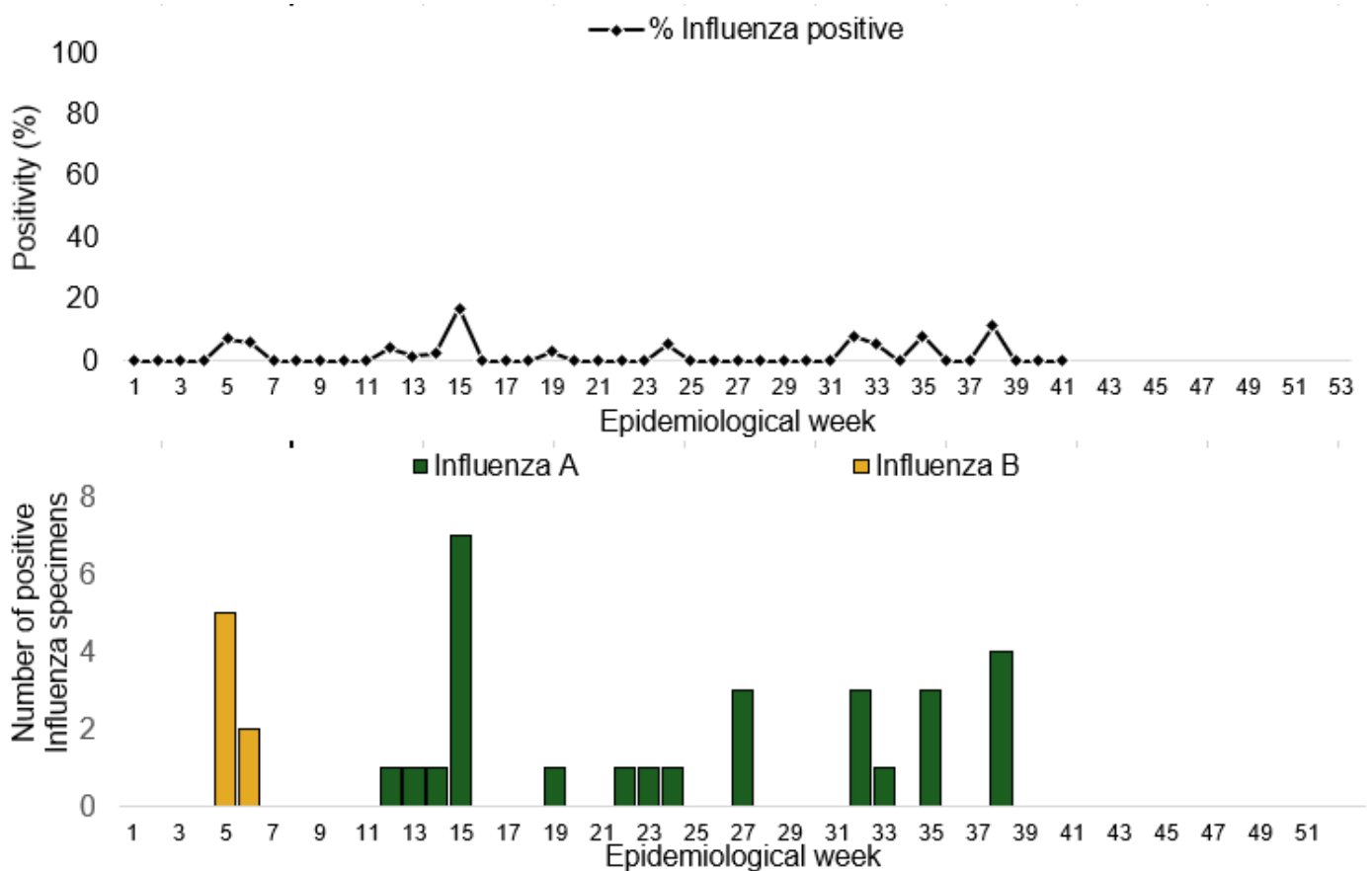
Year to date (week 1 – 41)

Suspected cases	Suspected ILI	Suspected SARI	Total Confirmed Cases	Confirmed cases by type	
				Influenza A	Influenza B
1174	784	390	37 (3.2%)	29(78.4%)	8(21.6%)

### Week 41

Suspected Cases	Confirmed Cases	Confirmed Case by type	
		Influenza A	Influenza B
36	0	0	0

Figure 15: Number of influenza positive specimens by type and percentage positive by epidemiological week, 2023.



## Coronavirus Disease (COVID-19)

### Week 41

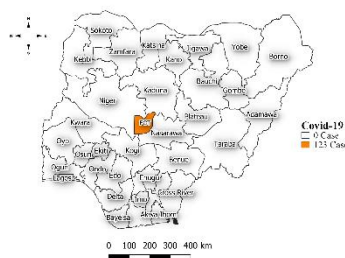
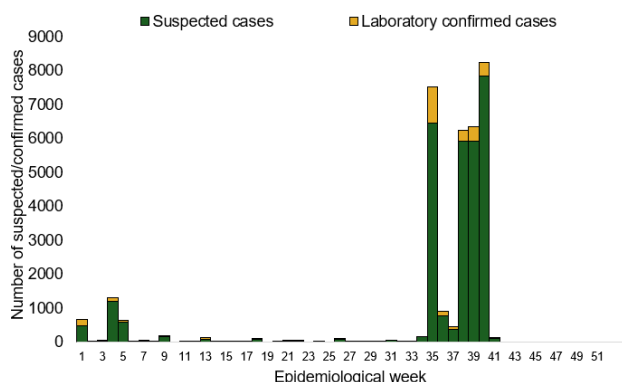
Suspected cases	Confirmed cases	Deaths	Number of States and LGAs affected
123	1	0	State: FCT LGA: 2

### Year to date (Week 1- 41)

Test conducted	Confirmed cases	Deaths	Number of States and LGAs affected
64675	608	1	State: 30 + FCT LGA: 65

Figure 16: Epidemic curve of confirmed cases of COVID-19, Nigeria, week 41, 2023

Figure 17: Location of **confirmed** cases of COVID-19 by State, Nigeria, as at week 41, 2023



### Key points

- There were 123 suspected cases of Covid 19 reported from two LGAs in FCT. There was one laboratory confirmed case and no death was recorded.

### Actions

#### To date:

- Multi-sectoral Public Health Emergency Operation Centres (PHEOC) activated at the National and affected States
- Engagement meetings with state teams on the ongoing response, Sitrep reporting and Ag-RDT data harmonization, challenges, and way forward.
- Mainstreaming of COVID-19 response activities into routine public health interventions such as surveillance, risk communication, testing etc.

## Diphtheria

### Week 41

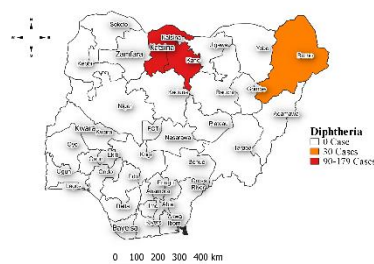
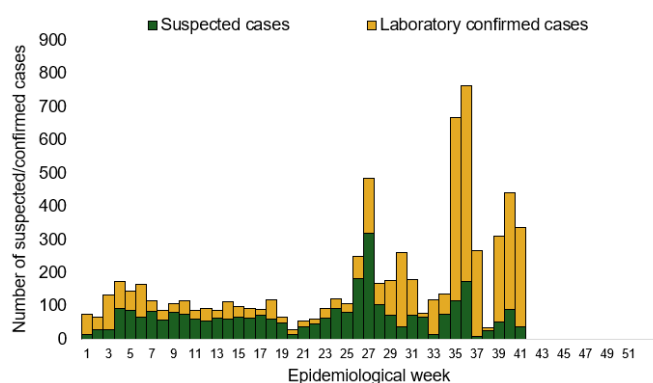
Suspected cases	Confirmed cases	Deaths	Number of States and LGAs affected
336	299	2	State: 3 LGA: 20

### Year to date (week 1 – 41)

Suspected cases		Confirmed cases		Deaths		CFR	
2022	2023	2022	2023	2022	2023	2022	2023
123	14897	24	9462	17	542	13.8%	3.8%

Figure 18: Number of suspected and confirmed cases of Diphtheria, Nigeria, weeks 1 – 41, 2023

Figure 19: Location of suspected cases of Diphtheria by State, Nigeria, week 41, 2023



### Key points

- There were 336 suspected cases of Diphtheria reported from 20 LGAs in three states. There were 299 confirmed cases, and two deaths were recorded.

### Actions

#### To date

- National Diphtheria Technical Working Group (TWG) is monitoring activities in all states.



## **Key points**

For the reporting week 41:

- 269 Calls were successfully routed to agents and answered
- 28 calls not routed to agents (Failed call)
- 297 total number of calls (successful and failed)
- Percentage of failed to total inbound calls 9.4%
- 1 signal picked and escalated (suspected diphtheria case in Kano state)

For week 1 – 41

- 14,705 calls successfully routed to agents and answered
- 3,390 calls not routed to agents (Failed call)
- 18,095 total inbound calls recorded
- Percentage of failed to total inbound calls: 18.7%
- 29 Signals picked and escalated to 36 states and FCT

## **Categories of Calls**

- Report of health conditions
- Health Declaration form-related queries
- Inquiries on Diphtheria symptoms, treatment, and Vaccine
- Inquiries on sexual transmitted disease
- Inquiries on yellow fever vaccine
- Inquiries on Lassa fever vaccine
- General inquiries
- Hoax call and others