



Nigeria Centre for Disease Control and Prevention
Protecting the health of Nigerians

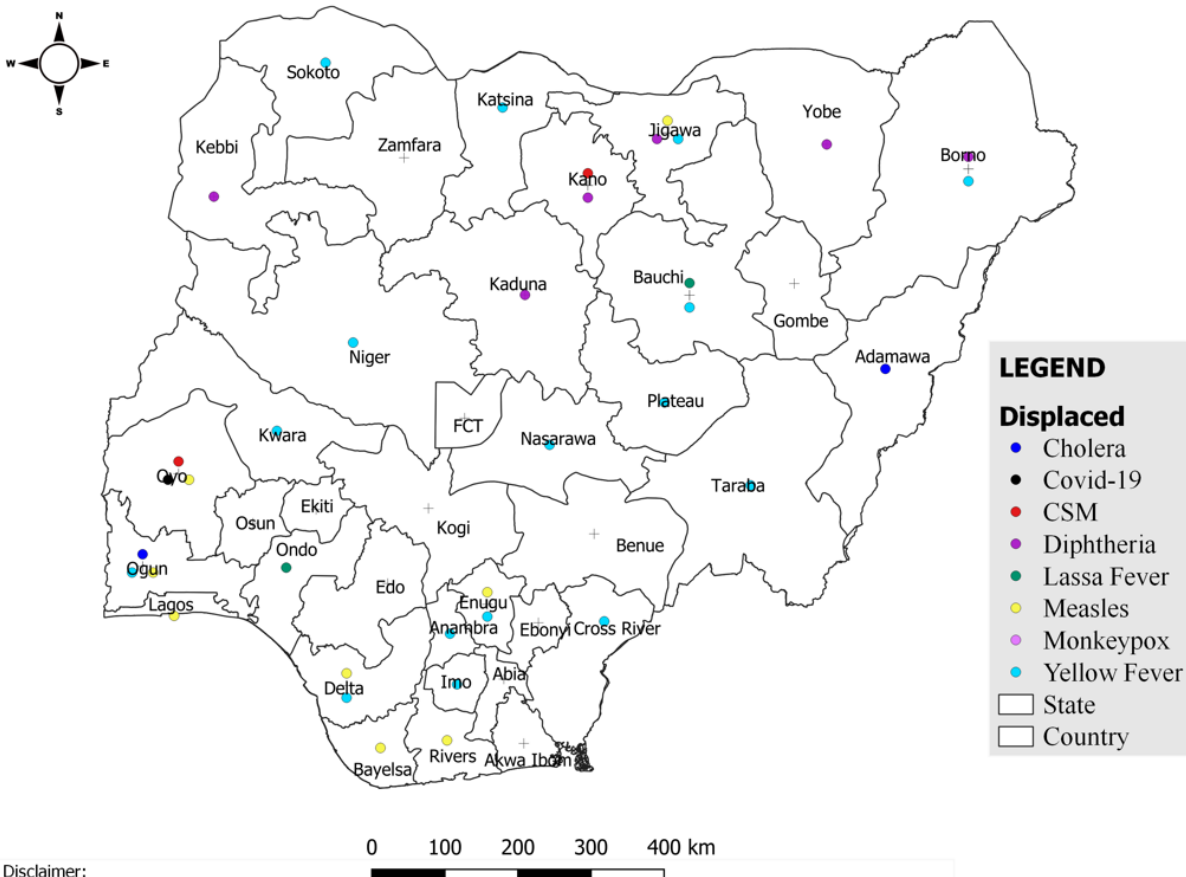
Weekly Epidemiological Report
 Week 38: 18th – 24th September 2023

Summary of Incidents

Ongoing incidents
2

Ongoing incidents are defined as confirmed cases where a national EOC or equivalent has been activated (EOC is currently activated for COVID-19)

Other incidents are those with confirmed cases for which EOC is not activated



Data Source: SITAware

Summary

Week 38: 18th – 24th September, 2023

Lassa Fever ^{1,2}	Cerebrospinal Meningitis (CSM) ^{1,4}	Yellow Fever ^{1,4}
107 Suspected case(s)	3 Suspected case(s)	29 Suspected case(s)
4 Confirmed case(s)	0 Confirmed case(s)	0 Confirmed case(s)
0 Death(s)	0 Death(s)	0 Death(s)
Cholera ^{1,4}	Measles ^{1,4}	Mpox ^{1,4}
27 Suspected case(s)	26 Suspected case(s)	0 Suspected case(s)
0 Confirmed case(s)	0 Confirmed case(s)	0 Confirmed case(s)
1 Death(s)	0 Death(s)	0 Death(s)
Acute Flaccid Paralysis (AFP) ^{1,4}	National Sentinel influenza surveillance ⁵	Coronavirus Disease ^{1,}
177 Suspected case(s)	35 Suspected case(s)	6232 Suspected case(s)
0 Confirmed case(s)	4 Confirmed case(s)	304 Confirmed case(s)
		0 Death(s)
Diphtheria ^{1,4}		
33 Suspected case(s)		
7 Confirmed case(s)		
0 Death(s)		

- Information for this disease was retrieved from the Technical Working Group and Situation Reports
- Case Fatality Rate (CFR) for this disease is reported for confirmed cases only
- CFR for this disease is reported for total cases i.e. suspected + confirmed
- Information for sentinel influenza was retrieved from the laboratory

Lassa Fever

Week 38

Suspected cases	Confirmed cases	Deaths	Number of States and LGAs affected
107	4	0	State: 14 LGA: 36

Year to date (week 1 – 38)

Suspected cases		Confirmed cases		Deaths		CFR	
2022	2023	2022	2023	2022	2023	2022	2023
6670	7458	929	1072	176	181	19.1%	16.9%

Figure 1: Number of suspected and confirmed cases of Lassa Fever, Nigeria, Weeks 1 – 38, 2023

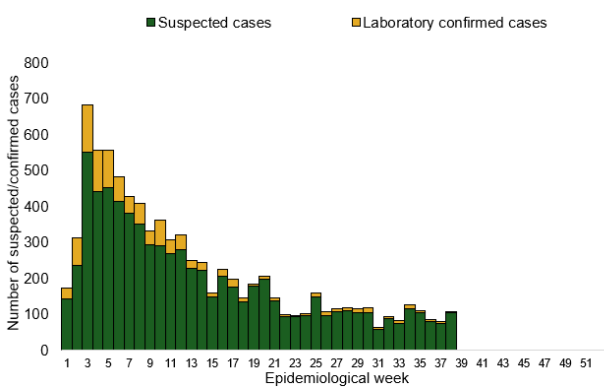
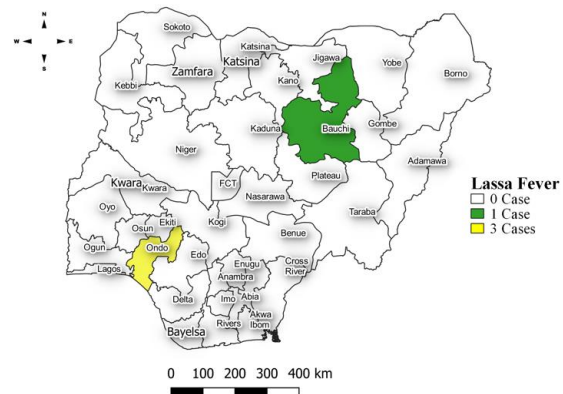


Figure 2: Location of **confirmed** cases of Lassa Fever by State, Nigeria, week 38, 2023



Key points

- There were 107 suspected cases of Lassa Fever reported from three LGAs in two states. There were four laboratory-confirmed cases and no death was recorded.

Actions

To date:

- National Lassa fever multi-partner, multi-sectoral Technical Working Group (TWG) continues to coordinate the response activities at all levels
- Conducted the 2023 Lassa Fever After Action Review
- 1st Draft of protocol for identification and management of LF in pregnant women completed
- Piloting of Epidemic Ready Primary Health Care (ERPHC) program in two states

Cerebrospinal Meningitis (CSM)

Week 38

Suspected cases	Confirmed cases	Deaths	Number of States and LGAs affected
3	0	0	State: 2 LGA: 2

Year to date (week 1 – 38)

Suspected cases		Confirmed cases		Deaths		CFR	
2022	2023	2022	2023	2022	2023	2022	2023
780	2494	12	315	102	158	13.1%	6.3%

Figure 3: Number of suspected and confirmed cases of CSM, Nigeria, weeks 1 – 38, 2023

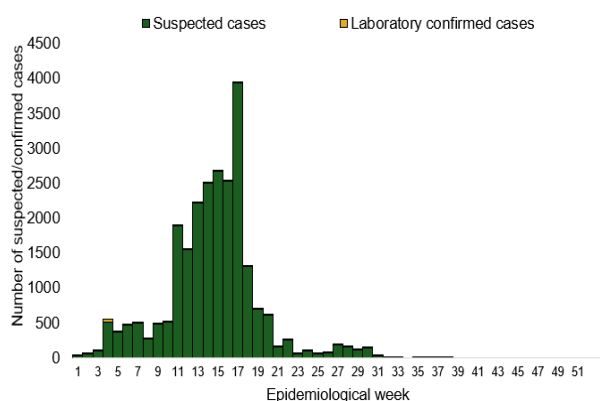
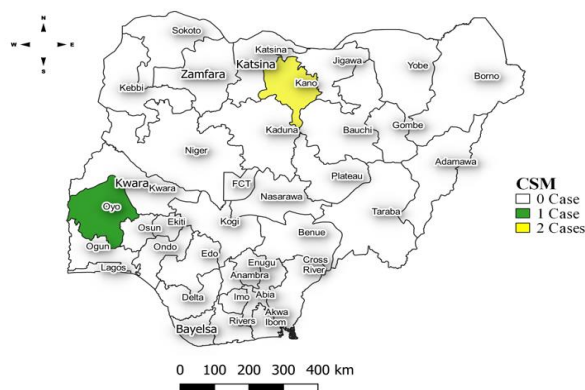


Figure 4: Location of suspected cases of CSM by State, Nigeria, week 38, 2023



Key points

- There were three suspected cases of Cerebrospinal meningitis (CSM) reported from two LGAs in Kano and Oyo states. There was no laboratory-confirmed case and no death was recorded.

Actions

To date:

- National CSM TWG meets weekly to review reports from states and plan appropriately.
- Monitoring of epidemiological trend to guide plans for reactive vaccination campaigns,
- Implementation of CSM reactive vaccination campaign in high-burden LGAs/Wards in Jigawa state led by NPHCDA.

Yellow Fever

Week 38

Suspected cases	Confirmed cases	Deaths	Number of States and LGAs affected
29	0	0	State: 16 LGA: 23

Year to date (week 1 – 38)

Suspected cases		Confirmed cases		Deaths		CFR	
2022	2023	2022	2023	2022	2023	2022	2023
1370	2014	10	24	10	9	0.7%	0.4%

Figure 5: Number of suspected and confirmed cases of Yellow Fever, Nigeria, weeks 1 – 38, 2023

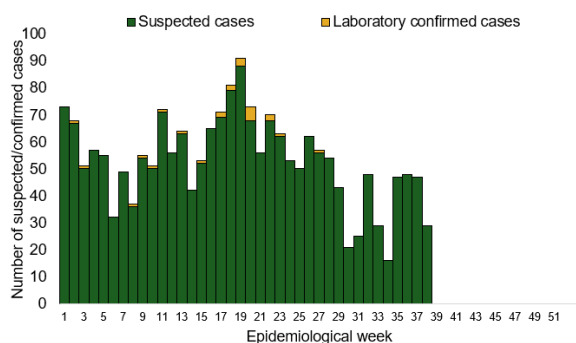
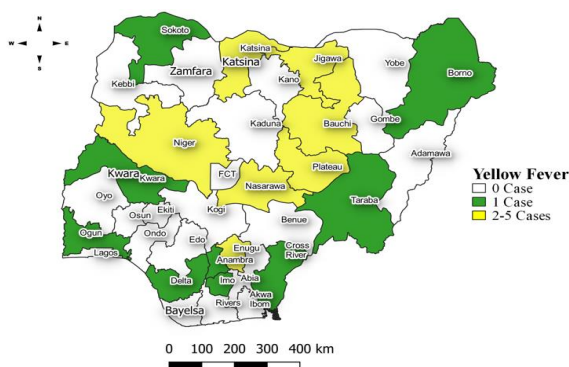


Figure 6: Location of suspected cases of Yellow Fever by States, Nigeria, week 38, 2023



Key points

- There were 29 suspected cases of Yellow Fever (YF) reported from 23 LGAs in 16 states. There was no laboratory-confirmed case and no death was recorded.

Actions

To date:

- National YF multi-partner Technical Working Group (TWG) continues to coordinate activities across states.
- Daily monitoring and analysis of surveillance data across the country to guide response activities.

Cholera

Week 38

Suspected cases	Confirmed cases	Deaths	Number of States and LGAs affected
27	0	1	State: 2 LGA: 2

Year to date (week 1 – 38)

Suspected cases		Confirmed cases		Deaths		CFR	
2022	2023	2022	2023	2022	2023	2022	2023
5850	3267	335	200	127	102	2.2%	3.1%

Figure 7: Number of suspected and confirmed cases of Cholera, Nigeria, weeks 1 – 38, 2023

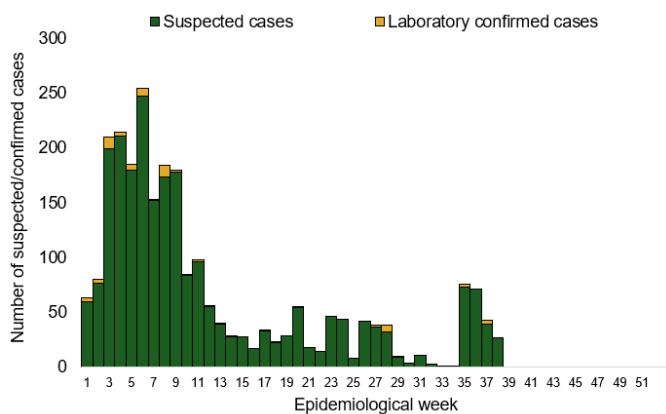
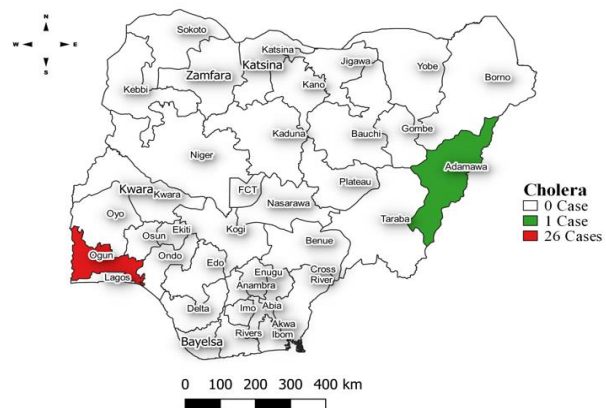


Figure 8: Location of suspected cases of Cholera by State, Nigeria, week 38, 2023



Key points

- There were 27 suspected cases of Cholera reported from two LGAs in Adamawa and Ogun states. There was no laboratory confirmed case and one death was recorded.

Actions

To date

- National Cholera Multi-Sectoral Technical Working Group (TWG) is monitoring all states and supporting affected states.
- Ongoing surveillance in all states through the routine Integrated Disease Surveillance and Response (IDSR) and Event-Based Surveillance (EBS).
- Continuous construction of sanitation and hygiene facilities with boreholes in cholera hotspots • Conducted WASH Sector review workshop.

Measles

Week 38

Suspected cases	Confirmed cases	Deaths	Number of States and LGAs affected
26	0	0	State: 8 LGA: 21

Year to date (week 1 – 38)

Suspected cases		Confirmed cases		Deaths		CFR	
2022	2023	2022	2023	2022	2023	2022	2023
42261	17207	3112	1439	311	81	0.7%	0.5%

Figure 9: Number of suspected and confirmed cases of Measles, Nigeria, weeks 1 – 38, 2023.

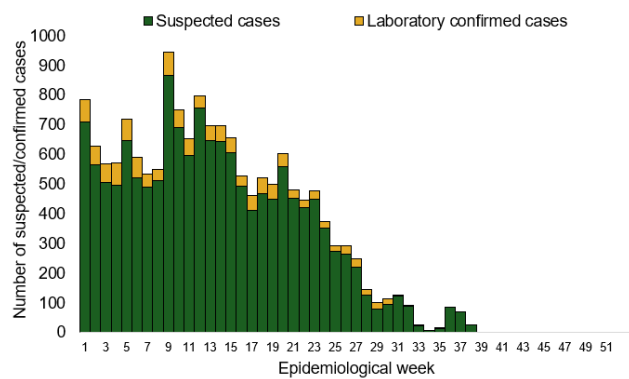
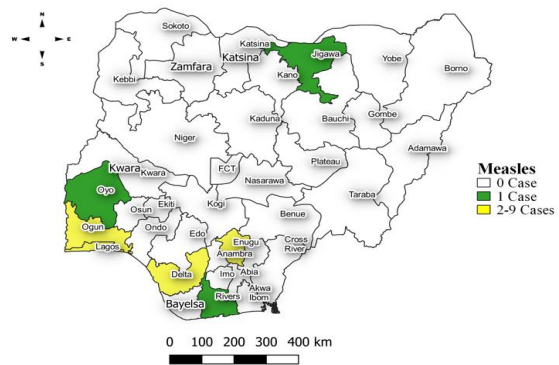


Figure 10: Location of suspected cases of Measles by State, Nigeria, week 38, 2023



Key points

- There were 26 suspected cases of Measles reported from 21 LGAs in 12 states. There was no laboratory confirmed case and no death was recorded.

Actions

To date

- National Measles TWG is closely monitoring measles surveillance data and providing feedback to relevant agencies and development partners.
- Ongoing weekly surveillance and laboratory data harmonisation.

Mpox

Week 38

Suspected cases	Confirmed cases	Deaths	Number of States and LGAs affected
0	0	0	State: 0 LGA: 0

Year to date (week 1 – 38)

Suspected cases		Confirmed cases		Deaths		CFR	
2022	2023	2022	2023	2022	2023	2022	2023
1108	914	456	80	7	2	0.6%	0.2%

Figure 11: Number of suspected and confirmed cases of Mpox, Nigeria, weeks 1– 38, 2023.

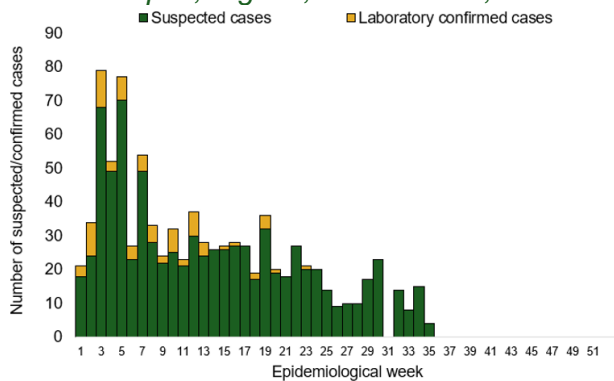
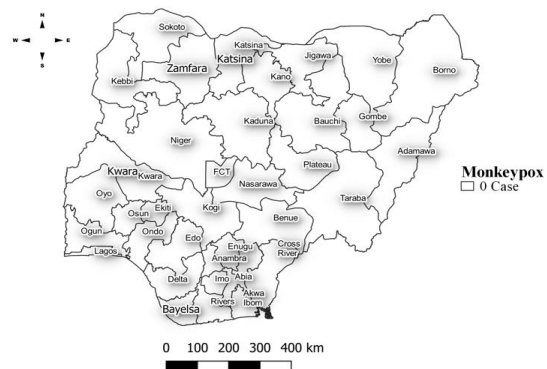


Figure 12: Location of suspected cases of Mpox by State, Nigeria, week 38, 2023



Key points

- There was no case reported for the week.

Actions

To date

- National Mpox Technical Working Group (TWG) is monitoring activities in all states.

Acute Flaccid Paralysis (AFP)

Week 38

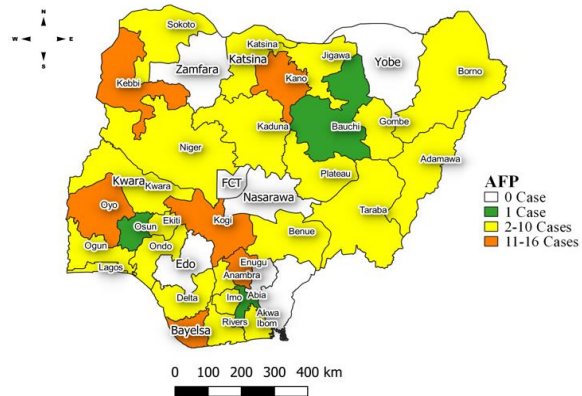
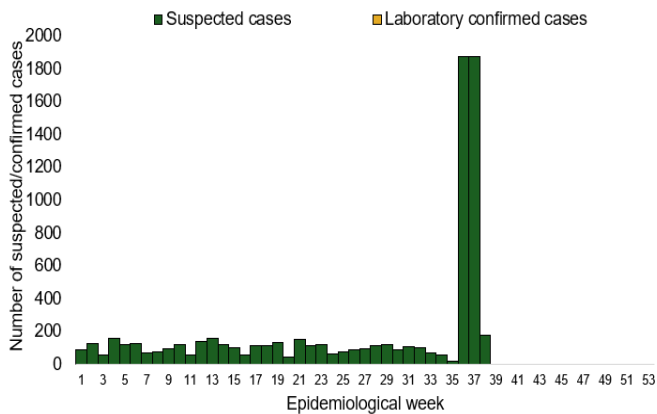
Suspected cases	Confirmed cases	Deaths	Number of States and LGAs affected
177	0	0	State: 30 LGA: 52

Year to date (week 1 – 38)

Suspected cases		Confirmed cases		Deaths		CFR	
2022	2023	2022	2023	2022	2023	2022	2023
5612	7300	0	0	7	0	0.1%	0%

Figure 13: Number of suspected and confirmed cases of AFP, Nigeria, weeks 1 – 38, 2023

Figure 14: Location of suspected cases of AFP by State, Nigeria, week 38, 2023



Key points

- There were 177 suspected cases of AFP reported from 52 LGAs in 30 states. There was no laboratory confirmed case and no death was recorded.

National Influenza Sentinel Surveillance

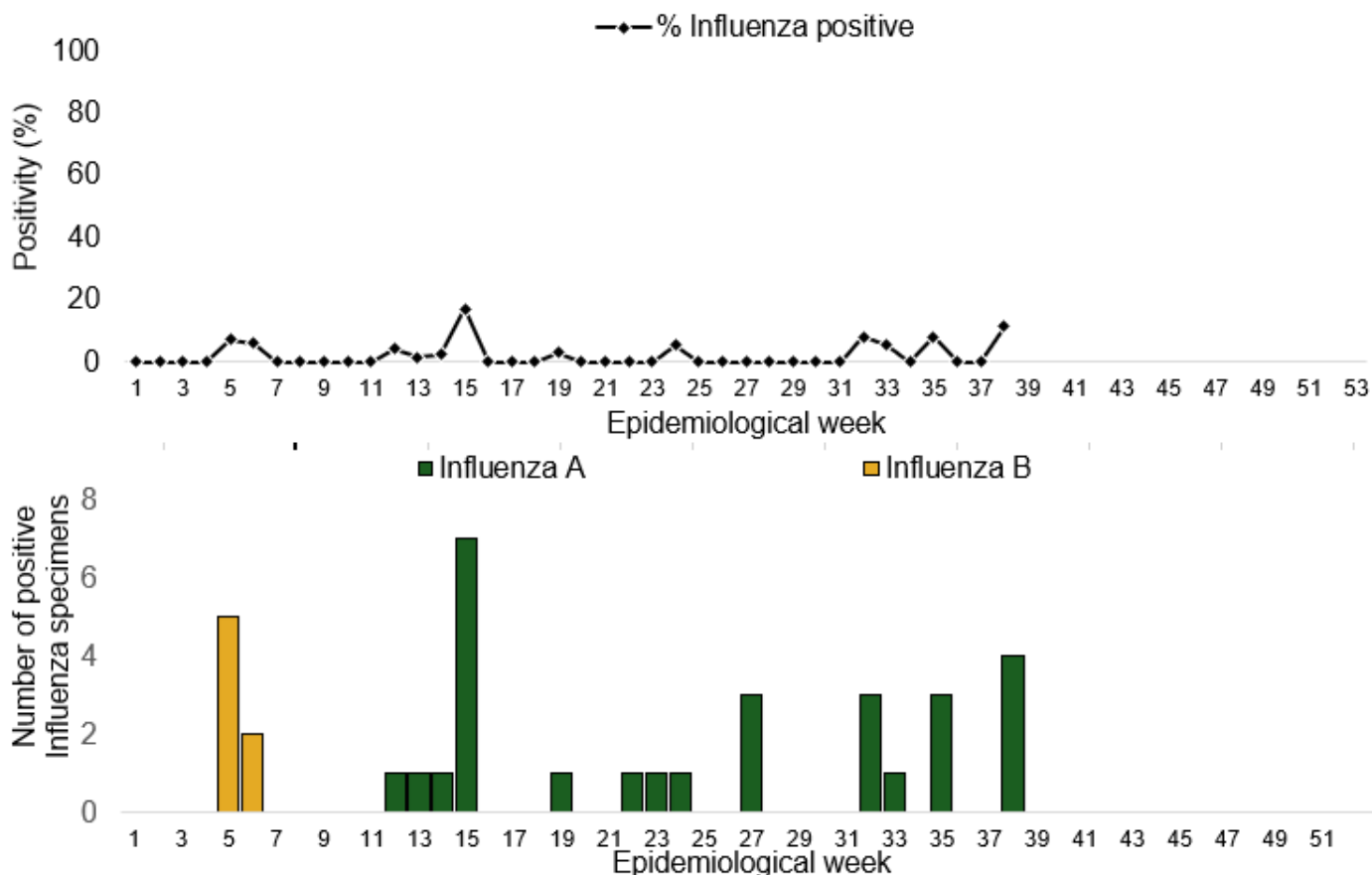
Year to date (week 1 – 38)

Suspected cases	Suspected ILI	Suspected SARI	Total Confirmed Cases	Confirmed cases by type	
				Influenza A	Influenza B
1111	745	366	37 (3.3%)	Influenza A	Influenza B
				29(78.4%)	8(21.6%)

Week 38

Suspected Cases	Confirmed Cases	Confirmed Case by type	
		Influenza A	Influenza B
35	4	4	0

Figure 15: Number of influenza positive specimens by type and percentage positive by epidemiological week, 2023.



Coronavirus Disease (COVID-19)

Week 38

Suspected cases	Confirmed cases	Deaths	Number of States and LGAs affected
6232	304	0	State: 1 LGA: 5

Year to date (Week 1- 38)

Test conducted	Confirmed cases	Deaths	Number of States and LGAs affected
18796	2049	1	State: 36+ FCT LGA:

Figure 16: Epidemic curve of confirmed cases of COVID-19, Nigeria, week 38, 2023

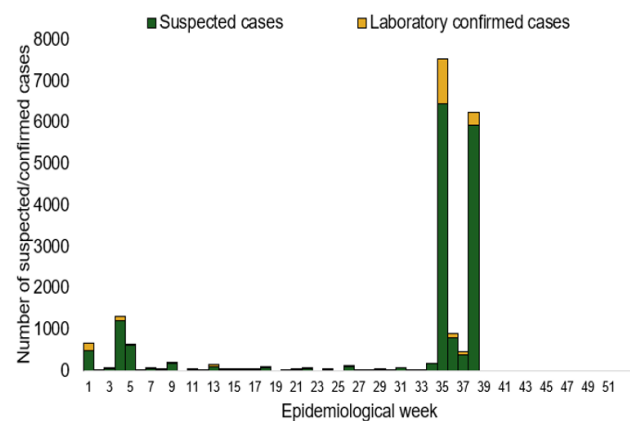
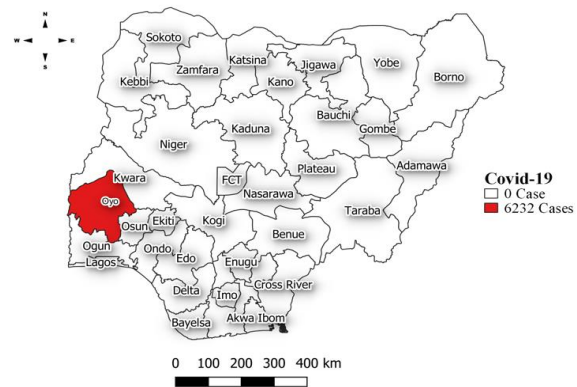


Figure 17: Location of **confirmed** cases of COVID-19 by State, Nigeria, as at week 38, 2023



Key points

- There were 6232 suspected cases of COVID-19 reported from five LGAs in Oyo state. There were 304 laboratory-confirmed cases and no death was recorded.

Actions

To date:

- Multi-sectoral Public Health Emergency Operation Centres (PHEOC) activated at the National and affected States
- Engagement meetings with state teams on the ongoing response, Sitrep reporting and Ag-RDT data harmonization, challenges, and way forward.
- Mainstreaming of COVID-19 response activities into routine public health interventions such as surveillance, risk communication, testing etc.

Diphtheria

Week 38

Suspected cases	Confirmed cases	Deaths	Number of States and LGAs affected
33	7	0	State: 2 LGA: 5

Year to date (week 1 – 38)

Suspected cases		Confirmed cases		Deaths		CFR	
2022	2023	2022	2023	2022	2023	2022	2023
123	11918	24	7463	17	454	70%	6.1%

Figure 18: Number of suspected and confirmed cases of Diphtheria, Nigeria, weeks 1 – 38, 2023

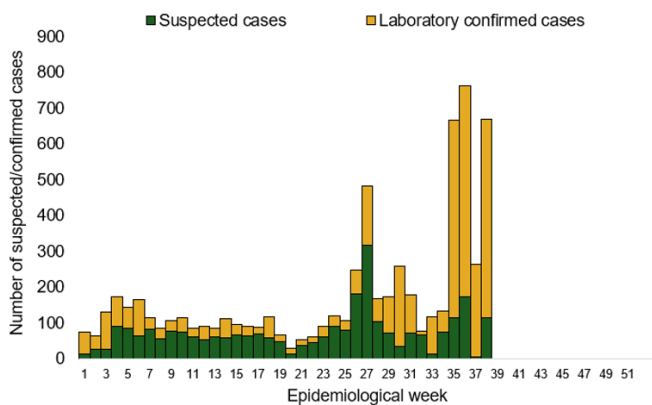
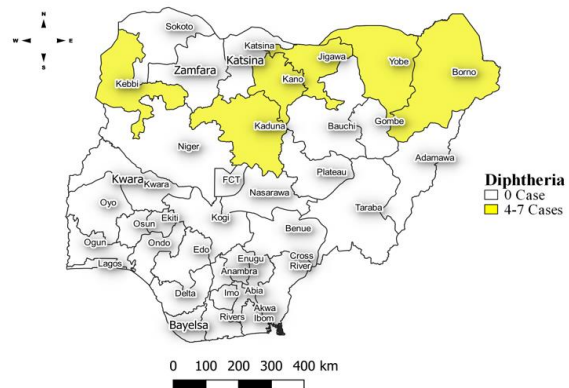


Figure 19: Location of suspected cases of Diphtheria by State, Nigeria, week 38, 2023



Key points

- There were 33 suspected cases of Diphtheria reported from 28 LGAs in six states. There were seven confirmed cases, and no death was recorded.

Actions To date

- National Diphtheria Technical Working Group (TWG) is monitoring activities in all states.

Event Based Surveillance (EBS)

Week 38

Call Summary per Call Hub as of week 38, 2023

Call Hubs	NCDC	GLO	Total
Successful Calls	198	0	198
Failed Calls	1	0	1

Number of Received/Resolved Health Declaration calls/emails for week 38

Calls	Emails	WhatsApp/texts
6	3	6

Disease conditions and events of public health importance captured as signals for the reporting week 38, 2023.

Number of Signals Category by Epi Week																																												
S/N	Epi Week	1	2	3	4	5	6	7	8	9	10	11	12	13	14	15	16	17	18	19	20	21	22	23	24	25	26	27	28	29	30	31	32	33	34	35	36	37	38					
1	COVID19	0	0	0	0	0	0	0	0	0	0	0	0	0	0	0	0	0	0	0	0	0	0	0	0	0	0	0	0	0	0	0	0	0	0	0	0	0	0	0				
2	Lassa Fever	0	1	0	1	0	0	0	0	0	0	0	0	0	0	0	0	0	0	0	0	0	1	0	0	0	0	0	0	0	0	0	0	0	0	0	0	0	0	0				
3	Yellow Fever	0	0	0	0	0	0	0	0	0	0	0	0	0	0	0	0	0	0	0	0	0	0	0	0	0	0	0	0	0	0	0	0	0	0	0	0	0	1	0	0			
4	CSM	0	0	0	0	0	0	0	0	0	0	0	1	0	0	0	0	0	0	0	0	0	0	0	0	0	0	0	0	0	0	0	0	0	0	0	0	0	1	0	0			
5	Cholera	0	0	1	0	0	0	0	0	0	0	0	0	0	0	0	0	0	0	0	0	0	0	0	0	0	0	0	0	0	0	0	0	0	0	0	0	0	0	0	0			
6	Monkey Pox	1	0	0	0	0	0	0	0	0	0	0	0	0	0	0	0	0	0	0	0	0	0	0	0	0	0	0	0	0	0	0	0	0	0	0	0	0	0	0	0			
7	Measles & Rubella	0	0	0	0	0	0	0	0	0	0	0	0	0	0	0	0	0	0	0	0	0	0	0	0	0	0	0	0	0	0	0	0	0	0	0	0	0	1	0	0			
8	One Health Related Signals	0	0	0	0	0	0	0	0	0	0	0	0	0	0	0	0	0	0	0	0	0	0	0	0	0	0	0	0	0	0	0	0	0	0	0	0	0	0	0	0	0		
9	Unexplained cluster of illness/ death in humans	0	0	0	0	0	0	0	0	0	0	0	1	1	0	0	0	0	0	0	0	0	0	0	0	0	0	0	0	0	0	0	0	0	0	0	0	0	0	0	0	0	0	
10	Disease or events of international or National Concern	0	0	0	0	0	0	0	0	0	0	0	0	0	0	0	0	0	0	0	0	0	0	0	0	0	0	0	0	0	0	0	0	0	0	0	0	0	0	0	0	0	0	
11	Others	0	0	5	1	0	1	0	0	0	0	0	0	0	0	0	0	0	1	0	0	0	1	1	0	2	0	0	1	0	0	0	1	1	0	0	0	0	1	1	0	0		
	TOTAL	1	1	6	1	0	1	0	0	0	0	0	2	1	0	0	0	0	0	0	0	1	2	0	2	0	0	0	0	0	0	0	0	0	0	0	1	1	0	0	0	4	1	0

Key points

For the reporting week 38:

- 198 Calls were successfully routed to agents and answered
- 1 call not routed to agents (Failed call)
- 199 total number of calls (successful and failed)
- Percentage of failed to total inbound calls 0.5%
- 0 signals picked

For week 1 - 38

- 14,057 calls successfully routed to agents and answered
- 3,347 calls not routed to agents (Failed call)
- 17,404 total inbound calls recorded
- Percentage of failed to total inbound calls: 19.2%
- 27 Signals picked and escalated to 36 states and FCT

Categories of Calls

- Report of health conditions
- Health Declaration-related queries
- Yellow Fever Vaccine enquiries
- Travel advisory enquiries
- TB related enquiries
- COVID-19 Vaccine enquiries
- General enquiries
- Hoax call and others