



Weekly Epidemiological Report

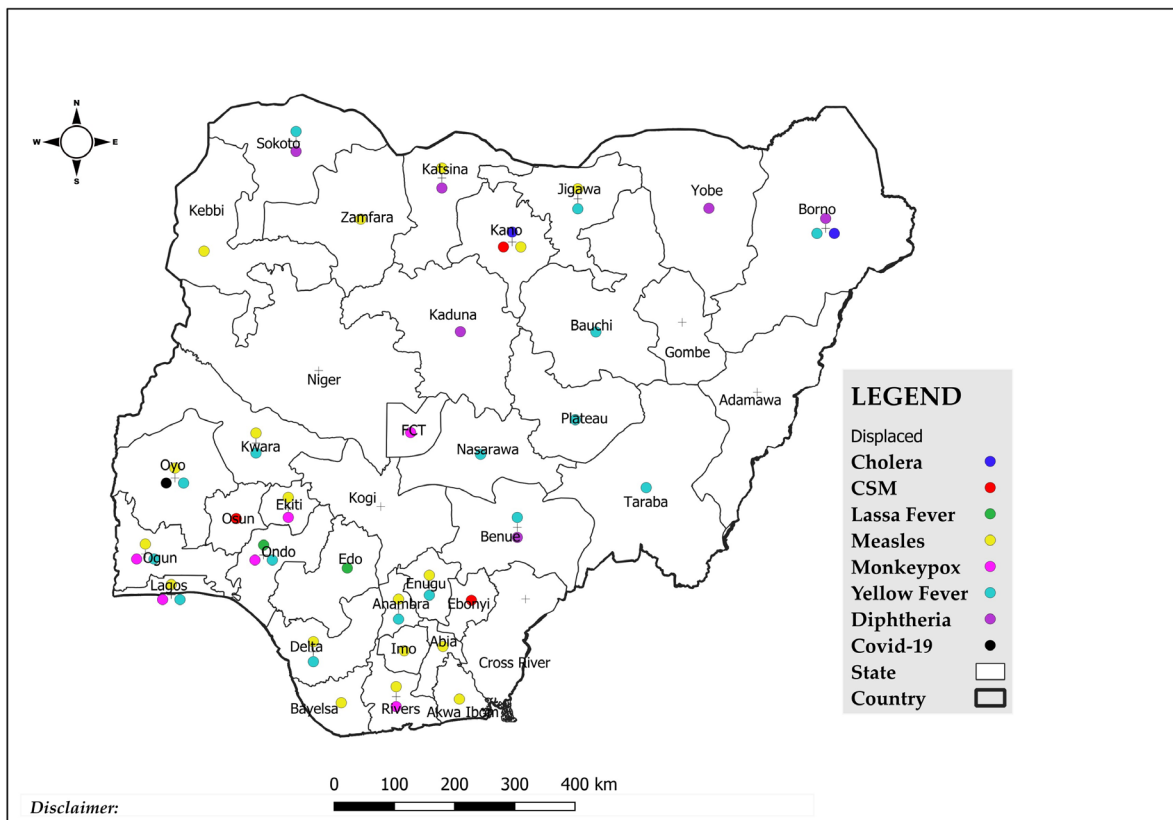
Week 32: 7th – 13th August 2023

Summary of Incidents

Ongoing incidents
2

Ongoing incidents are defined as confirmed cases where a national EOC or equivalent has been activated (EOC is currently activated for COVID-19)

Other incidents are those with confirmed cases for which EOC is not activated



Data Source: SITAware

Summary

Week 32: 7th – 13th August 2023

Lassa Fever ^{1,2}	Cerebrospinal Meningitis (CSM) ^{1,3}	Yellow Fever ^{1,3}
94 Suspected case(s)	3 Suspected case(s)	48 Suspected case(s)
5 Confirmed case(s)	0 Confirmed case(s)	0 Confirmed case(s)
1 Death(s)	0 Death(s)	0 Death(s)
Cholera ^{1,3}	Measles ^{1,3}	Mpox ^{1,3}
3 Suspected case(s)	92 Suspected case(s)	14 Suspected case(s)
0 Confirmed case(s)	4 Confirmed case(s)	0 Confirmed case(s)
1 Death(s)	1 Death(s)	0 Death(s)
Acute Flaccid Paralysis (AFP) ^{1,3}	National Sentinel influenza surveillance ⁴	Coronavirus Disease ^{1,3}
97 Suspected case(s)	36 Suspected case(s)	1 Suspected case(s)
0 Confirmed case(s)	3 Confirmed case(s)	0 Confirmed case(s)
		0 Death(s)
Diphtheria ^{1,3}		
78 Suspected case(s)		
12 Confirmed case(s)		
2 Death(s)		

- Information for this disease was retrieved from the Technical Working Group and Situation Reports
- Case Fatality Rate (CFR) for this disease is reported for confirmed cases only
- CFR for this disease is reported for total cases i.e. suspected + confirmed
- Information for sentinel influenza was retrieved from the laboratory

Lassa Fever

Week 32

Suspected cases	Confirmed cases	Deaths	Number of States and LGAs affected
94	5	1	State: 9 + FCT LGA: 15

Year to date (week 1 – 32)

Suspected cases		Confirmed cases		Deaths		CFR	
2022	2023	2022	2023	2022	2023	2022	2023
6305	6872	889	1033	174	178	19.6%	17.2%

Figure 1: Number of suspected and confirmed cases of Lassa Fever, Nigeria, Weeks 1 – 32, 2023

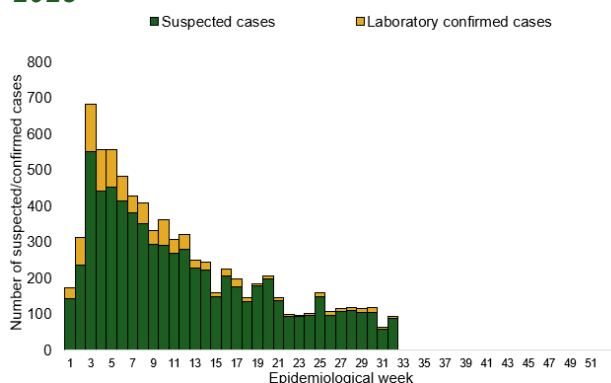
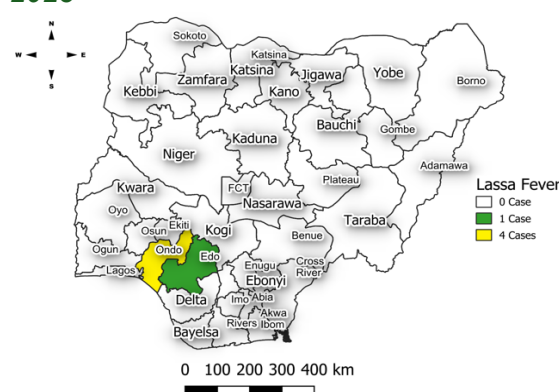


Figure 2: Location of confirmed cases of Lassa Fever by State, Nigeria, week 32, 2023



Key points

- There were 94 suspected cases of Lassa Fever reported from 15 LGAs in nine states and FCT. There were five laboratory confirmed cases in two states and one death was recorded.

Actions

To date:

- National Lassa fever multi-partner, multi-sectoral Technical Working Group (TWG) continues to coordinate the response activities at all levels
- Carried out Joint Lassa Fever Case Management/ IPC training
- Piloting of Epidemic Ready Primary Health Care (ERPHC) program in two states
- Distribution of response commodities -PPEs, Ribavirin (injection and tablets) body-bags, thermometers, hypochlorite hand sanitizers, IEC materials distributed to states and treatment centres
- Implementation of Nigeria Lassa fever epidemiological Study supported by CEPI

Cerebrospinal Meningitis (CSM)

Week 32

Suspected cases	Confirmed cases	Deaths	Number of States and LGAs affected
3	0	0	State: 3 LGA: 3

Year to date (week 1 – 32)

Suspected cases		Confirmed cases		Deaths		CFR	
2022	2023	2022	2023	2022	2023	2022	2023
730	24823	0	315	101	158	13.8%	0.6%

Figure 3: Number of suspected and confirmed cases of CSM, Nigeria, weeks 1 – 32, 2023

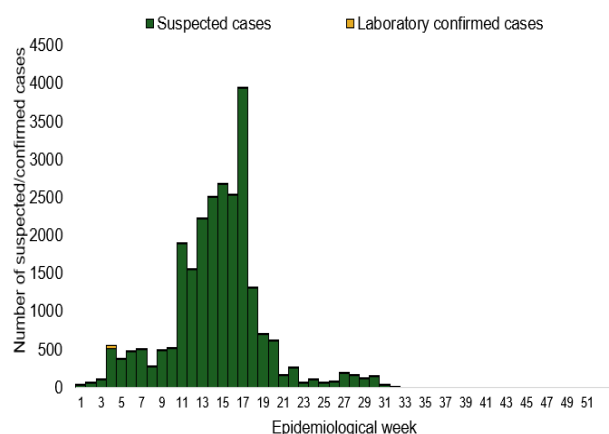
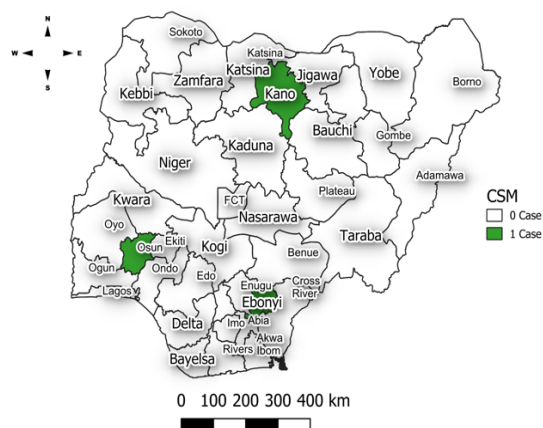


Figure 4: Location of suspected cases of CSM by State, Nigeria, week 32, 2023



Key points

- There were three suspected cases of Cerebrospinal meningitis (CSM) reported from three LGAs in three states. There was no laboratory confirmed case and no death was recorded.

Actions

To date:

- National CSM TWG meets weekly to review reports from states and plan appropriately.
- Monitoring of epidemiological trend to guide plans for reactive vaccination campaigns,
- Implementation of CSM reactive vaccination campaign in high burden LGAs/Wards in Jigawa state led by NPHCDA.

Yellow Fever

Week 32

Suspected cases	Confirmed cases	Deaths	Number of States and LGAs affected
48	0	0	State: 16 LGA: 31

Year to date (week 1 – 32)

Suspected cases		Confirmed cases		Deaths		CFR	
2022	2023	2022	2023	2022	2023	2022	2023
1083	1798	0	24	10	4	0.9%	0.2%

Figure 5: Number of suspected and confirmed cases of Yellow Fever, Nigeria, weeks 1 – 32, 2023

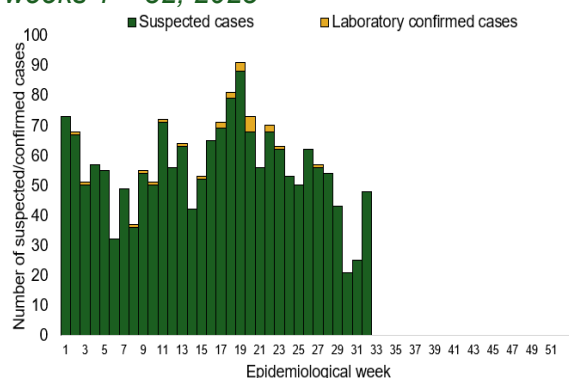
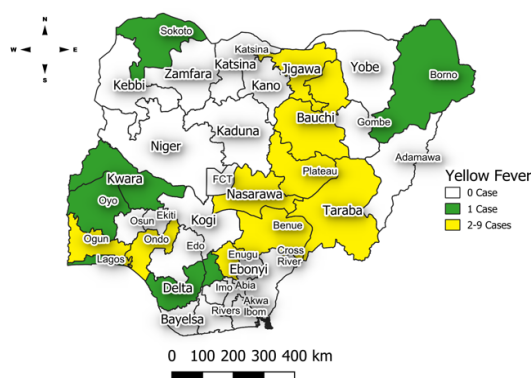


Figure 6: Location of suspected cases of Yellow Fever by States, Nigeria, week 32, 2023



Key points

- There were 48 suspected cases of Yellow Fever (YF) reported from LGAs in 16 states. There was no laboratory confirmed case and no death was recorded.

Actions

To date:

- National YF multi-partner Technical Working Group (TWG) continues to coordinate activities across states.
- Daily monitoring and analysis of surveillance data across the country to guide response activities.
- Supporting implementation of yellow fever preventive mass vaccination campaigns in Jigawa
- Optimization of Yellow fever reference laboratory in at University of Maiduguri Teaching Hospital (UMTH) Maiduguri

Cholera

Week 32

Suspected cases	Confirmed cases	Deaths	Number of States and LGAs affected
3	0	1	State: 2 LGA: 2

Year to date (week 1 – 32)

Suspected cases		Confirmed cases		Deaths		CFR	
2022	2023	2022	2023	2022	2023	2022	2023
3314	2293	31	45	53	60	1.2%	2.6%

Figure 7: Number of suspected and confirmed cases of Cholera, Nigeria, weeks 1 – 32, 2023

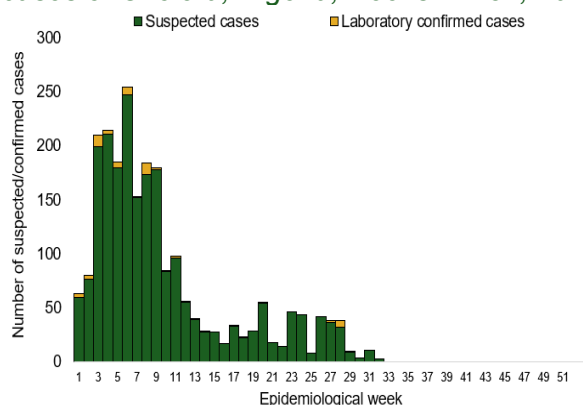
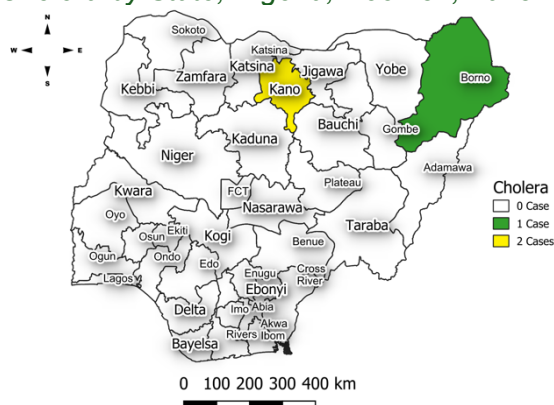


Figure 8: Location of suspected cases of Cholera by State, Nigeria, week 32, 2023



Key points

- There were three suspected cases of Cholera reported from two LGAs in two states. There was no laboratory confirmed case and one death was recorded.

Actions

To date

- National Cholera Multi-Sectoral Technical Working Group (TWG) is monitoring all states and supporting affected states.
- Ongoing surveillance in all states through the routine Integrated Disease Surveillance and Response (IDSR) and Event Based Surveillance (EBS).
- Continuous construction of sanitation and hygiene facilities with boreholes in cholera hotspots • Conducted WASH Sector review workshop.

Measles

Week 32

Suspected cases	Confirmed cases	Deaths	Number of States and LGAs affected
92	4	1	State: 18 LGA: 32

Year to date (week 1 – 32)

Suspected cases		Confirmed cases		Deaths		CFR	
2022	2023	2022	2023	2022	2023	2022	2023
52500	15949	3486	1364	311	80	0.6%	0.5%

Figure 9: Number of suspected and confirmed cases of Measles, Nigeria, weeks 1 – 32, 2023.

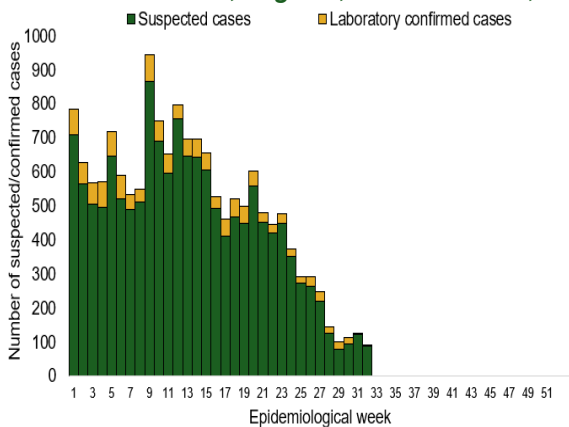
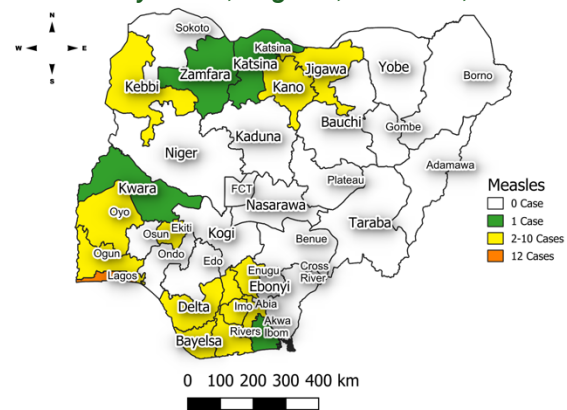


Figure 10: Location of suspected cases of Measles by State, Nigeria, week 32, 2023



Key points

- There were 92 suspected cases of Measles reported from 32 LGAs in 18 states. There were four laboratory confirmed cases and one death was recorded.

Actions

To date

- National Measles TWG is closely monitoring measles surveillance data and providing feedback to relevant agencies and development partners.
- Ongoing weekly surveillance and laboratory data harmonisation.

Mpox

Week 32

Suspected cases	Confirmed cases	Deaths	Number of States and LGAs affected
14	0	0	State: 5 + FCT LGA: 8

Year to date (week 1 – 32)

Suspected cases		Confirmed cases		Deaths		CFR	
2022	2023	2022	2023	2022	2023	2022	2023
530	887	220	80	4	2	0.8%	0.2%

Figure 11: Number of suspected and confirmed cases of Mpox, Nigeria, weeks 1– 32, 2023.

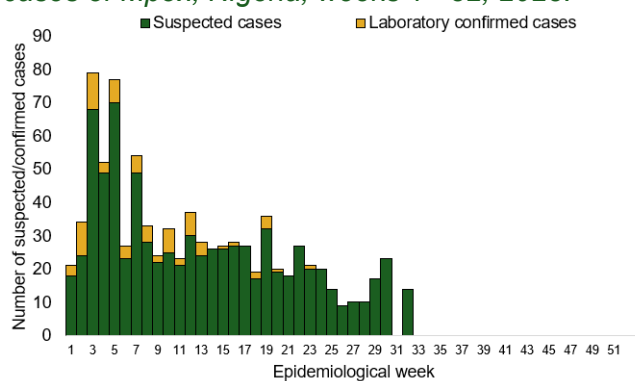
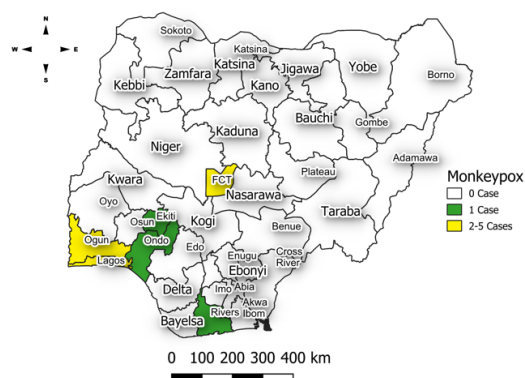


Figure 12: Location of suspected cases of Mpox by State, Nigeria, week 32, 2023



Key points

- There were 14 suspected cases of Mpox reported from eight LGAs in five states and FCT. There was no laboratory confirmed case and no death was recorded.

Actions

To date

- National Mpox Technical Working Group (TWG) is monitoring activities in all states.
- Ongoing weekly surveillance and laboratory data harmonisation.

Acute Flaccid Paralysis (AFP)

Week 32

Suspected cases	Confirmed cases	Deaths	Number of States and LGAs affected
97	0	0	State: 29 LGA: 42

Year to date (week 1 – 32)

Suspected cases		Confirmed cases		Deaths		CFR	
2022	2023	2022	2023	2022	2023	2022	2023
4692	3243	0	0	7	0	0.2%	0%

Figure 13: Number of suspected and confirmed cases of AFP, Nigeria, weeks 1 – 32, 2023

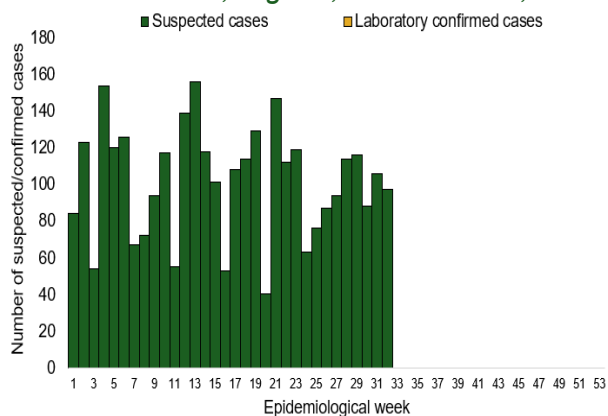
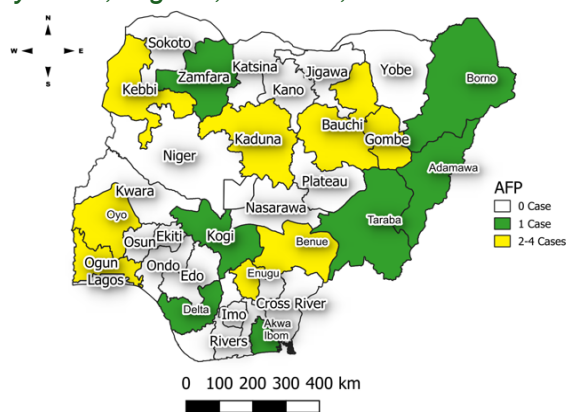


Figure 14: Location of suspected cases of AFP by State, Nigeria, week 32, 2023



Key points

- There were 97 suspected cases of AFP reported from 42 LGAs in 29 states. There was no laboratory confirmed case and no death was recorded.

National Influenza Sentinel Surveillance

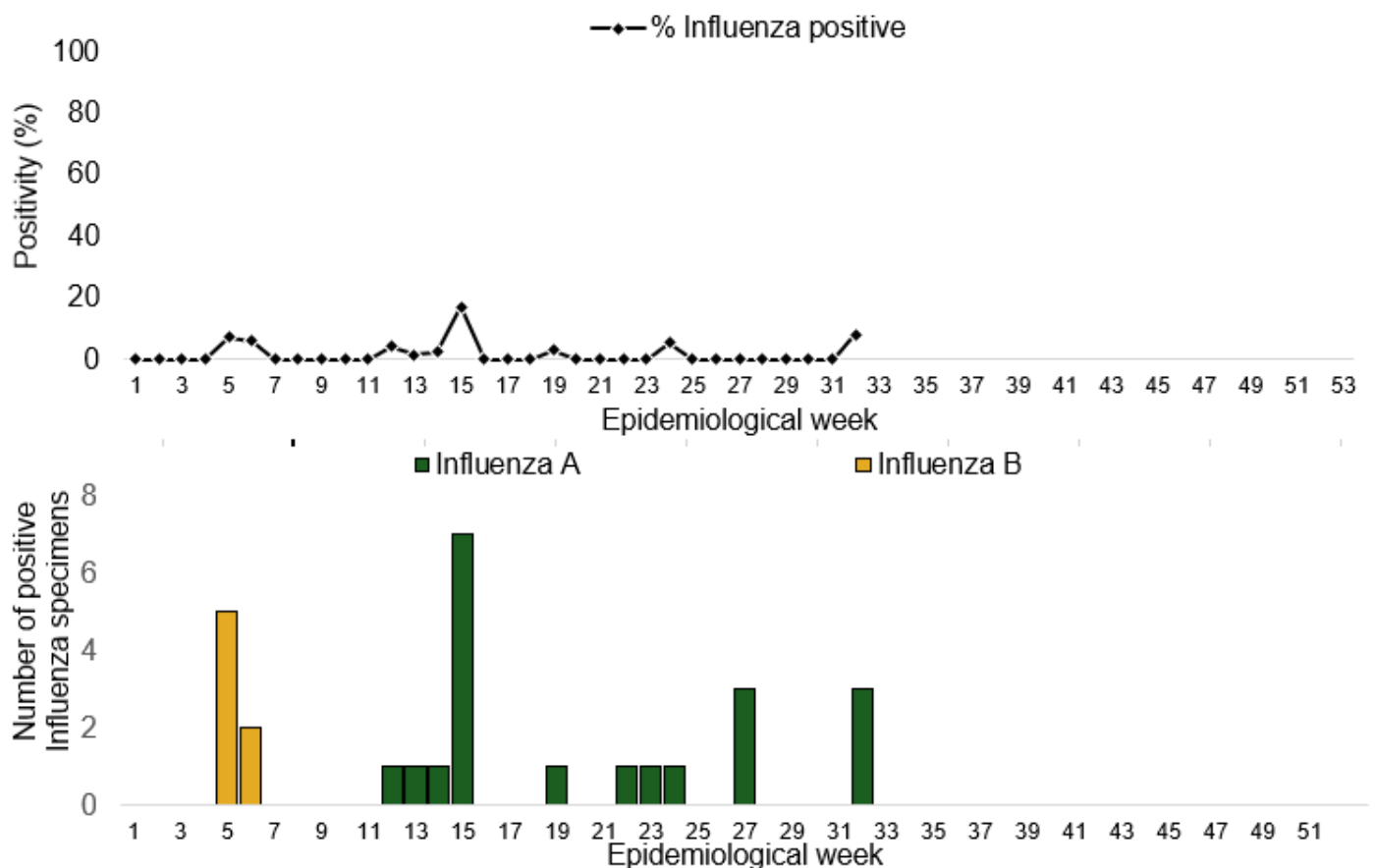
Year to date (week 1 – 32)

Suspected cases	Suspected ILI	Suspected SARI	Total Confirmed Cases (2.5%)	Confirmed cases by type	
				Influenza A	Influenza B
832	496	326	22	15(63.2%)	7(36.8%)

Week 32

Suspected Cases	Confirmed Cases	Confirmed Case by type	
		Influenza A	Influenza B
36	3	3	0

Figure 15: Number of influenza positive specimens by type and percentage positive by epidemiological week, 2023.



Coronavirus Disease (COVID-19)

Week 32

Suspected cases	Confirmed cases	Deaths	Number of States and LGAs affected
1	0	0	State: 1 LGA: 1

Year to date (Week 1- 32)

Test conducted	Confirmed cases	Deaths	Number of States and LGAs affected
3602	498	148	State: 29 + FCT LGA: 57

Figure 16: Epidemic curve of confirmed cases of COVID-19, Nigeria, week 32, 2023

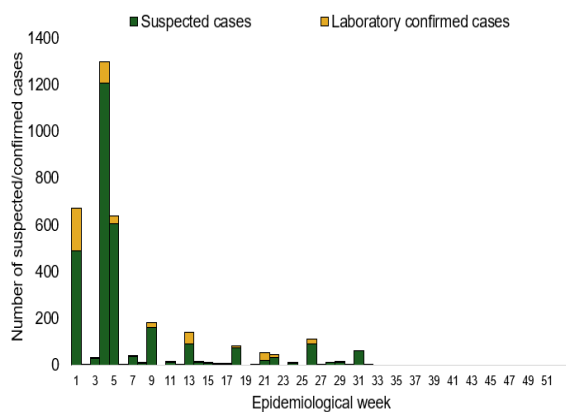
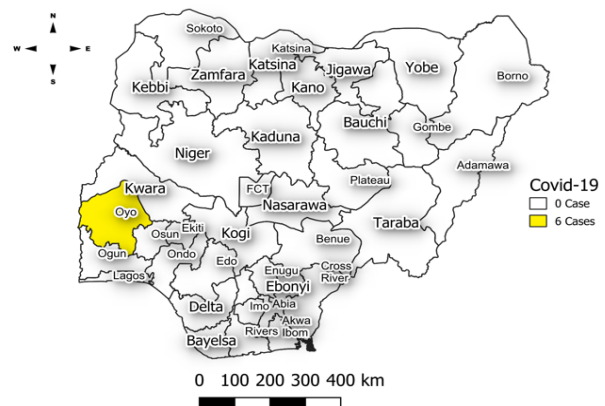


Figure 17: Location of confirmed cases of COVID-19 by State, Nigeria, as at week 32, 2023



Key points

- There was one suspected case of Covid 19 reported from one LGA in Kaduna state. There was no laboratory confirmed case and no death was recorded.

Actions

To date:

- Multi-sectoral Public Health Emergency Operation Centres (PHEOC) activated at the National and affected States
- Engagement meetings with state teams on the ongoing response, Sitrep reporting and Ag-RDT data harmonization, challenges, and way forward.
- Mainstreaming of COVID-19 response activities into routine public health interventions such as surveillance, risk communication, testing etc.
- Continue harmonisation of surveillance and laboratory data

Diphtheria

Week 32

Suspected cases	Confirmed cases	Deaths	Number of States and LGAs affected
78	12	2	State: 5 LGA: 18

Year to date (week 1 – 32)

Suspected cases		Confirmed cases		Deaths		CFR	
2022	2023	2022	2023	2022	2023	2022	2023
0	5529	0	2484	0	190	0%	3.4%

Figure 18: Number of suspected and confirmed cases of Diphtheria, Nigeria, weeks 1 – 32, 2023

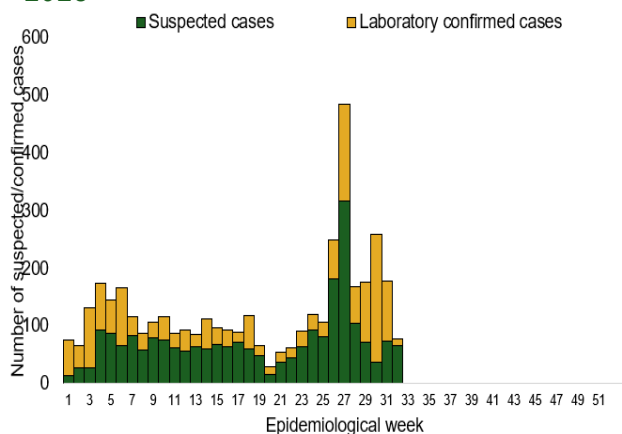
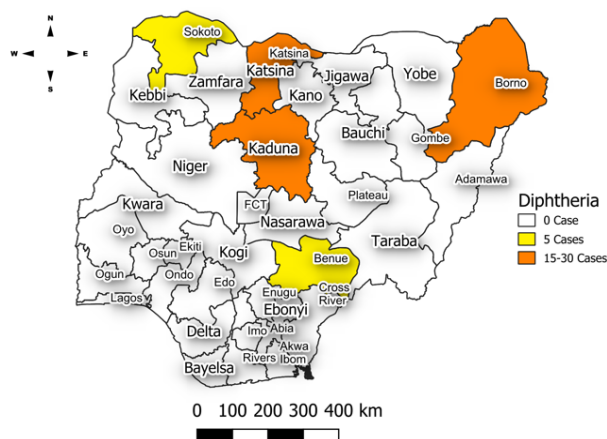


Figure 19: Location of confirmed cases of Diphtheria by State, Nigeria, week 32, 2023



Key points

- There were 78 suspected cases of Diphtheria reported from 18 LGAs in five states. There were 12 confirmed cases, and two deaths were recorded.

Actions To date

- National Diphtheria Technical Working Group (TWG) is monitoring activities in all states.

Event Based Surveillance (EBS)

Week 32

Call Summary per Call Hub as of week 32, 2023

Call Hubs	NCDC	GLO	Total
Successful Calls	159	0	159
Failed Calls	249	0	249

Number of Received/Resolved Health Declaration calls/emails for week 32.

Calls	Emails	WhatsApp/texts
5	15	10

Disease conditions and events of public health importance captured as signals for the reporting week 32, 2023.

Number of Signals Category by Epi Week																																			
S/N	Epi Week	1	2	3	4	5	6	7	8	9	10	11	12	13	14	15	16	17	18	19	20	21	22	23	24	25	26	27	28	29	30	31	32		
1	COVID19	0	0	0	0	0	0	0	0	0	0	0	0	0	0	0	0	0	0	0	0	0	0	0	0	0	0	0	0	0	0	0	0	0	0
2	Lassa Fever	0	1	0	1	0	0	0	0	0	0	0	0	0	0	0	0	0	0	0	0	0	0	1	0	0	0	0	0	0	0	0	0	0	
3	Yellow Fever	0	0	0	0	0	0	0	0	0	0	0	0	0	0	0	0	0	0	0	0	0	0	0	0	0	0	0	0	0	0	0	0	0	
4	CSM	0	0	0	0	0	0	0	0	0	0	0	0	1	0	0	0	0	0	0	0	0	0	0	0	0	0	0	0	0	0	0	0	0	
5	Cholera	0	0	1	0	0	0	0	0	0	0	0	0	0	0	0	0	0	0	0	0	0	0	0	0	0	0	0	0	0	0	0	0	0	
6	Monkey Pox	1	0	0	0	0	0	0	0	0	0	0	0	0	0	0	0	0	0	0	0	0	0	0	0	0	0	0	0	0	0	0	0	0	
7	Measles & Rubella	0	0	0	0	0	0	0	0	0	0	0	0	0	0	0	0	0	0	0	0	0	0	0	0	0	0	0	0	0	0	0	0	0	
8	One Health Related Signals	0	0	0	0	0	0	0	0	0	0	0	0	0	0	0	0	0	0	0	0	0	0	0	0	0	0	0	0	0	0	0	0	0	
9	Unexplained cluster of illness/death in humans	0	0	0	0	0	0	0	0	0	0	0	0	1	1	0	0	0	0	0	0	0	0	0	0	0	0	0	0	0	0	0	0	0	
10	Disease or events of international or National Concern	0	0	0	0	0	0	0	0	0	0	0	0	0	0	0	0	0	0	0	0	0	0	0	0	0	0	0	0	0	0	0	0	0	
11	Others	0	0	5	1	0	1	0	0	0	0	0	0	0	0	0	0	0	1	0	0	0	1	1	0	2	0	0	1	0	0	0	1	1	
TOTAL		1	1	6	1	0	1	0	0	0	0	0	2	1	0	0	0	0	0	0	0	1	2	0	2	0	0	0	0	0	0	1	1		

Key points

For the reporting week 32:

- **159** Calls were successfully routed to agents and answered.
- **249** calls not routed to agents (Failed call)
- **408** total number of calls (successful and failed)
- Percentage of failed to total inbound calls **61.0%**
- **1 diphtheria signal picked and escalated**

For week 1 – 32

- **12,219** calls successfully routed to agents and answered
- **2,743** calls not routed to agents (Failed call)
- **14,962** total inbound calls recorded.
- Percentage of failed to total inbound calls: **18.3%**
- **22** Signals picked and escalated to 36 states and FCT

Categories of Calls

- Report of health conditions
- Health Declaration-related queries
- Yellow Fever Vaccine enquiries
- Travel advisory enquiries
- TB related enquiries
- COVID19 Vaccine enquiries
- General enquiries
- Hoax call and others