



Weekly Epidemiological Report

Week 29: 17th – 23rd July 2023

Highlight of the Week

Heightened efforts in response to the outbreak of Anthrax disease



The Nigeria Centre for Disease Control and Prevention (NCDC) is working closely with the Federal Ministry of Agriculture and Rural Development, one-health stakeholders and State Ministries to respond to the recently confirmed animal case of anthrax with reported human exposure. Several measures have been put in place to ensure any outbreak of Anthrax in Nigeria is quickly detected, controlled, and contained. These measures include.

- The establishment of the One-Health Anthrax Technical Working Group led by the FMARD to coordinate the national response
- Activation of a National Incident Management System by both FMARD and NCDC.
- Contact tracing of persons and livestock exposed to the index cases.
- Development of an incident action plan (IAP) in the event of a confirmed case in humans.
- Prepositioning of medical countermeasures and consumables such as medications, personal protective equipment (PPEs) etc.
- Propositioning of laboratory consumables for diagnoses.

Though a human case of the disease has not been recorded, members of the public are urged to:

- Exercise caution when buying animals - cows, camels, sheep, goats, and other livestock - from Nigerian states bordering Benin, Chad, and Niger, and from Ghana and Togo via waterways.
- Carefully observe livestock to be slaughtered for consumption or sale for signs of ill health before slaughtering. Do NOT EAT products from sick or dead animals.
- Avoid contact with meat/bush meat or animal by-products such as skin, hides ("kpomo") and milk of a sick or dead animal.
- Do NOT SLAUGHTER sick animals to avoid the risk of inhalation of the bacteria by humans around at the time.
- Hunters SHOULD NOT pick sick or dead animals from the bush or forest to be sold for human consumption.

Anthrax is treatable when reported early. Call the NCDC on our toll-free line (6232) if you notice any of the signs and symptoms associated with anthrax for prompt treatment.

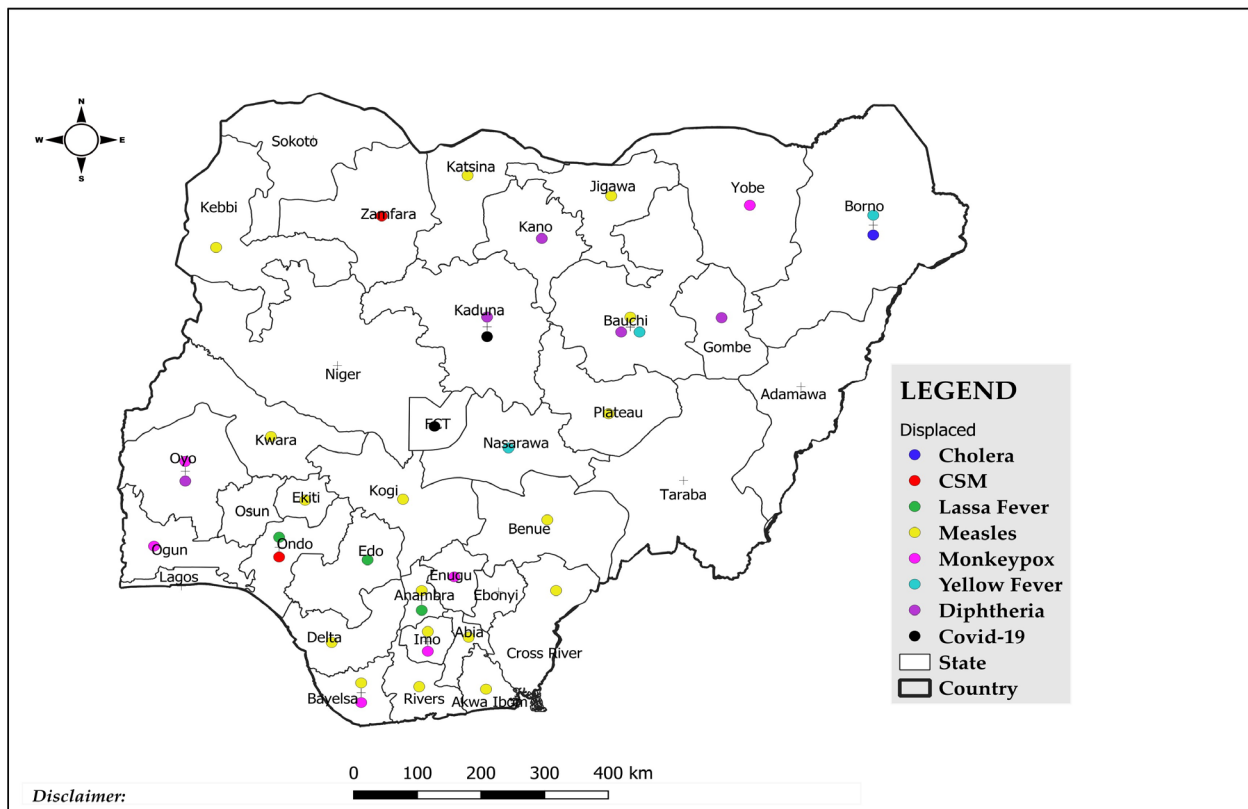
Summary of Incidents

Ongoing incidents

2

Ongoing incidents are defined as confirmed cases where a national EOC or equivalent has been activated (EOC is currently activated for COVID-19 and Diphtheria)

Other incidents are those with confirmed cases for which EOC is not activated



Data Source: SITAware

Summary

Week 29: 17th – 23rd July 2023

1. Lassa Fever ^{1,2}	2. Cerebrospinal Meningitis (CSM) ^{1,3}	3. Yellow Fever ^{1,3}
114 Suspected case(s)	116 Suspected case(s)	5 Suspected case(s)
9 Confirmed case(s)	6 Confirmed case(s)	0 Confirmed case(s)
0 Death(s)	2 Death(s)	0 Death(s)
Cholera ^{1,3}	Measles ^{1,3}	Mpox ^{1,3}
10 Suspected case(s)	69 Suspected case(s)	17 Suspected case(s)
1 Confirmed case(s)	2 Confirmed case(s)	0 Confirmed case(s)
3 Death(s)	0 Death(s)	0 Death(s)
Acute Flaccid Paralysis (AFP) ^{1,3}	National Sentinel influenza surveillance ^{1,4}	Coronavirus Disease ^{1,3}
116 Suspected case(s)	38 Suspected case(s)	15 Suspected case(s)
0 Confirmed case(s)	0 Confirmed case(s)	2 Confirmed case(s)
		0 Death(s)
Diphtheria ^{1,3}		
175 Suspected case(s)		
103 Confirmed case(s)		
3 Death(s)		

1. Information for this disease was retrieved from the Technical Working Group and Situation Reports
2. Case Fatality Rate (CFR) for this disease is reported for confirmed cases only
3. CFR for this disease is reported for total cases i.e. suspected + confirmed
4. Information for sentinel influenza was retrieved from the laboratory

Lassa Fever

Week 29

Suspected cases	Confirmed cases	Deaths	Number of States and LGAs affected
114	9	0	State: 13+FCT LGA: 51

Year to date (week 1 – 29)

Suspected cases		Confirmed cases		Deaths		CFR	
2022	2023	2022	2023	2022	2023	2022	2023
5891	6597	857	1009	169	171	19.7%	16.9%

Figure 1: Number of suspected and confirmed cases of Lassa Fever, Nigeria, Weeks 1 – 29, 2023

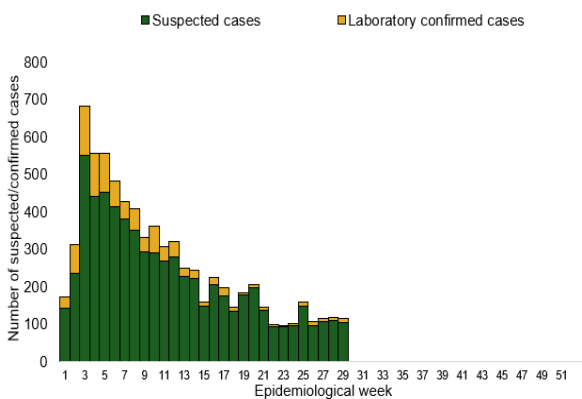
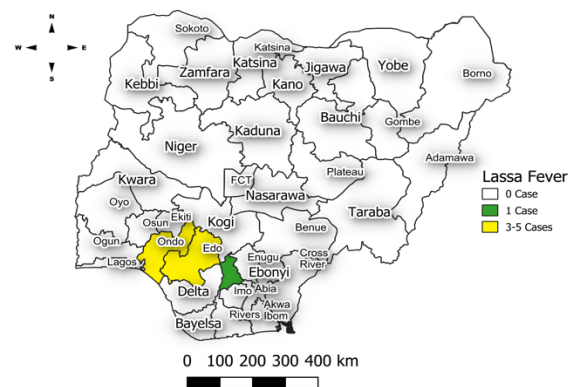


Figure 2: Location of confirmed cases of Lassa Fever by State, Nigeria, week 29, 2023



Key points

- There were 114 suspected cases from eight LGAs in three states. There were nine laboratory confirmed cases and no death was recorded.

Actions

To date:

- Multi-sectoral Public Health Emergency Operation Centres (PHEOC) activated at the National and affected States.
- Conducted one-day Accelerating Lassa fever Vaccine workshop with CEPI and key stakeholders, experts and policy makers.
- Deactivation of the IMS/EOC.
- Conducted Lassa fever risk assessment.

Cerebrospinal Meningitis (CSM)

Week 29

Suspected cases	Confirmed cases	Deaths	Number of States and LGAs affected
116	6	2	State: 2 LGA: 19

Year to date (week 1 – 29)

Suspected cases		Confirmed cases		Deaths		CFR	
2022	2023	2022	2023	2022	2023	2022	2023
708	24639	0	294	100	155	14.1	0.6%

Figure 3: Number of suspected and confirmed cases of CSM, Nigeria, weeks 1 – 29, 2023

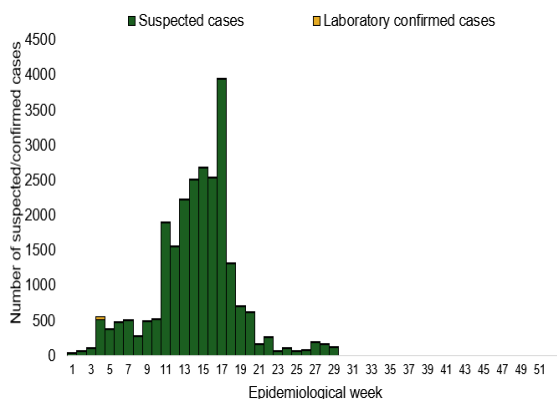
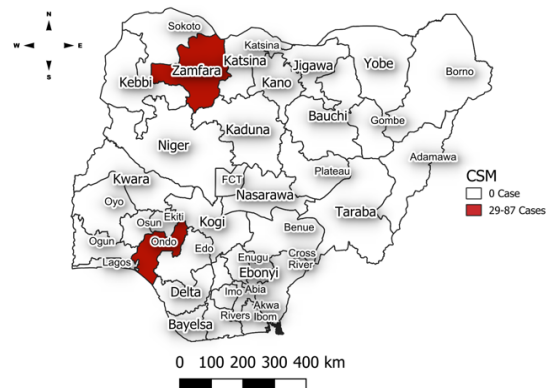


Figure 4: Location of suspected cases of CSM by State, Nigeria, week 29, 2023



Key points

- There were 116 suspected cases of Cerebrospinal meningitis (CSM) reported from 19 LGAs in two states. There were six laboratory confirmed cases and two deaths were recorded.

Actions

To date:

- National CSM TWG meets weekly to review reports from states and plan appropriately
- Monitoring of epidemiological trend to guide plans for reactive vaccination campaigns,
- Implementation of CSM reactive vaccination campaign in high burden LGAs/Wards in Jigawa state led by NPHCDA

Yellow Fever

Week 29

Suspected cases	Confirmed cases	Deaths	Number of States and LGAs affected
5	0	0	State: 3 LGA: 4

Year to date (week 1 – 29)

Suspected cases		Confirmed cases		Deaths		CFR	
2022	2023	2022	2023	2022	2023	2022	2023
1016	1714	10	21	1	4	0.1%	0.2%

Figure 5: Number of suspected and confirmed cases of Yellow Fever, Nigeria, weeks 1 – 29, 2023.

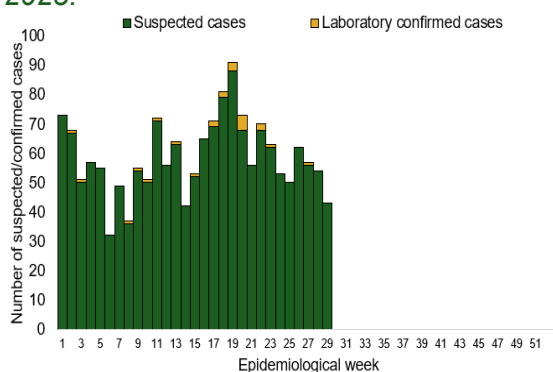
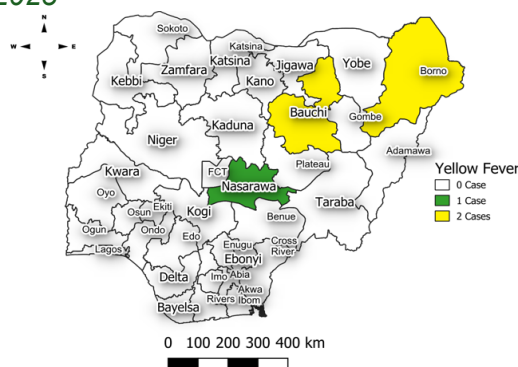


Figure 6: Location of suspected cases of Yellow Fever by States, Nigeria, week 29, 2023



Key points

- There were five suspected cases of Yellow Fever (YF) reported from four LGAs in three states. There was no laboratory confirmed case and no death was recorded.

Actions

To date:

- National YF multi-partner Technical Working Group (TWG) continues to coordinate activities across states.
- Daily monitoring and analysis of surveillance data across the country to guide response activities.

Cholera

Week 29

Suspected cases	Confirmed cases	Deaths	Number of States and LGAs affected
10	1	3	State: 1 LGA: 1

Year to date (week 1 – 29)

Suspected cases		Confirmed cases		Deaths		CFR	
2022	2023	2022	2023	2022	2023	2022	2023
3810	2275	9	63	39	58	1.02%	2.5%

Figure 7: Number of suspected and confirmed cases of Cholera, Nigeria, weeks 1 – 29, 2023

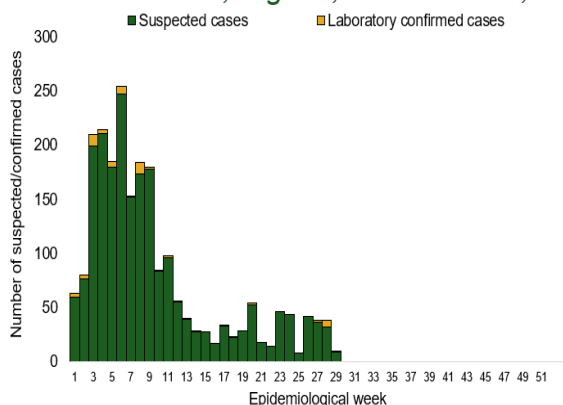
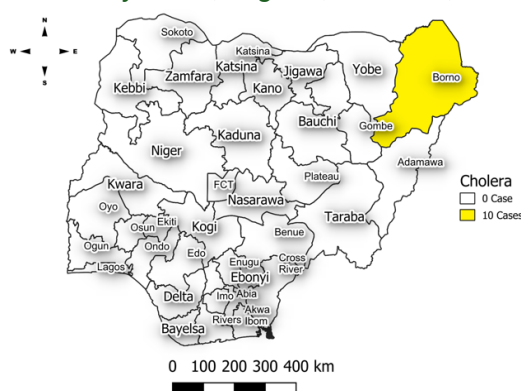


Figure 8: Location of suspected cases of Cholera by State, Nigeria, week 29, 2023



Key points

- There were 10 suspected cases of Cholera reported from one LGA in Borno. There was one laboratory confirmed case and three deaths were recorded.

Actions

To date

- National Cholera Multi-Sectoral Technical Working Group (TWG) is monitoring all states and supporting affected states.
- Ongoing surveillance in all states through the routine Integrated Disease Surveillance and Response (IDSR) and Event Based Surveillance (EBS).
- Continuous construction of sanitation and hygiene facilities with boreholes in cholera hotspots • Conducted WASH Sector review workshop.

Measles

Week 29

Suspected cases	Confirmed cases	Deaths	Number of States and LGAs affected
69	2	0	State: 17 LGA: 41

Year to date (week 1 – 29)

Suspected cases		Confirmed cases		Deaths		CFR	
2022	2023	2022	2023	2022	2023	2022	2023
51397	15334	3486	1278	309	79	0.6%	0.5%

Figure 9: Number of suspected and confirmed cases of Measles, Nigeria, weeks 1 – 29, 2023.

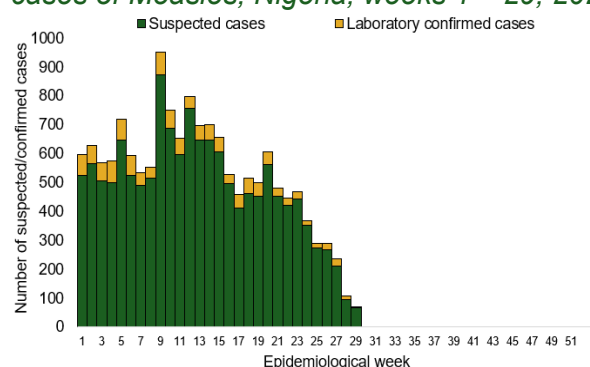
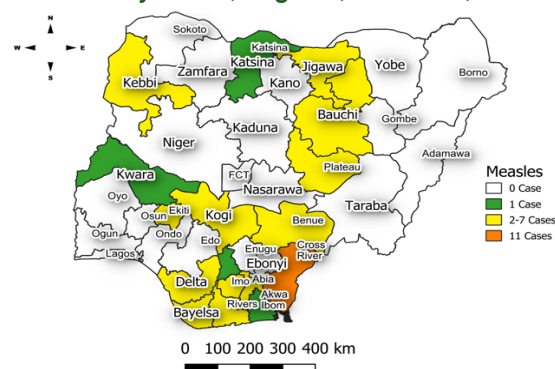


Figure 10: Location of suspected cases of Measles by State, Nigeria, week 29, 2023



Key points

- There were 69 suspected cases of Measles reported from 41 LGAs in 17 states. There were two laboratory confirmed cases and no death was recorded

Actions

To date

- National Measles TWG is closely monitoring measles surveillance data and providing feedback to relevant agencies and development partners.
- Ongoing weekly surveillance and laboratory data harmonisation.

Mpox

Week 29

Suspected cases	Confirmed cases	Deaths	Number of States and LGAs affected
17	0	0	State: 6 LGA: 9

Year to date (week 1 – 29)

Suspected cases		Confirmed cases		Deaths		CFR	
2022	2023	2022	2023	2022	2023	2022	2023
357	850	133	80	3	2	0.8%	0.2%

Figure 11: Number of suspected and confirmed cases of Mpox, Nigeria, weeks 1– 29, 2023.

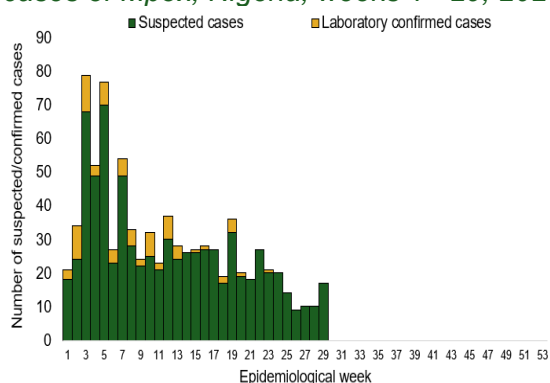
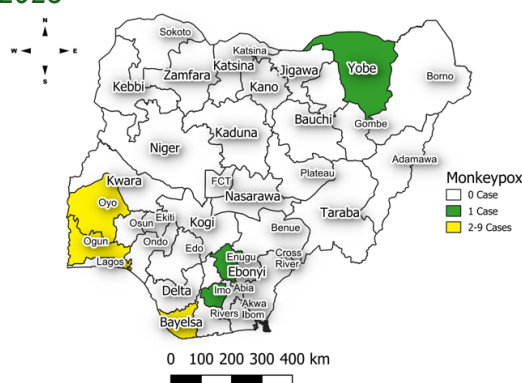


Figure 12: Location of suspected cases of Mpox by State, Nigeria, week 29, 2023



Key points

- There were 17 suspected cases of Mpox reported from nine LGAs in six states. There was no laboratory confirmed case and no death was reported.

Actions

To date

- National Mpox Technical Working Group (TWG) is monitoring activities in all states.

Acute Flaccid Paralysis (AFP)

Week 29

Suspected cases	Confirmed cases	Deaths	Number of States and LGAs affected
116	0	0	State: 27 LGA: 106

Year to date (week 1 – 29)

Suspected cases		Confirmed cases		Deaths		CFR	
2022	2023	2022	2023	2022	2023	2022	2023
43422	2952	0	0	7	0	0.2%	0%

Figure 13: Number of suspected and confirmed cases of AFP, Nigeria, weeks 1 – 29, 2023

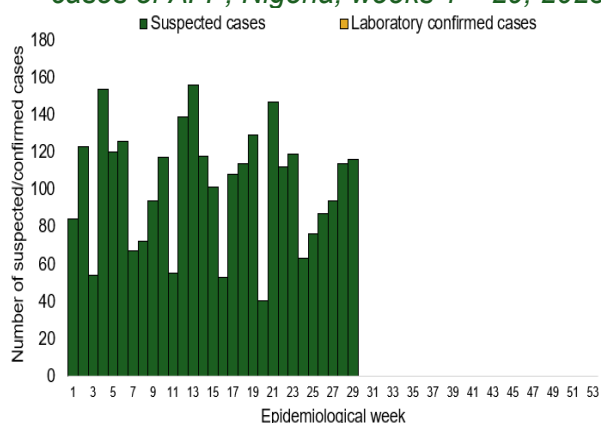
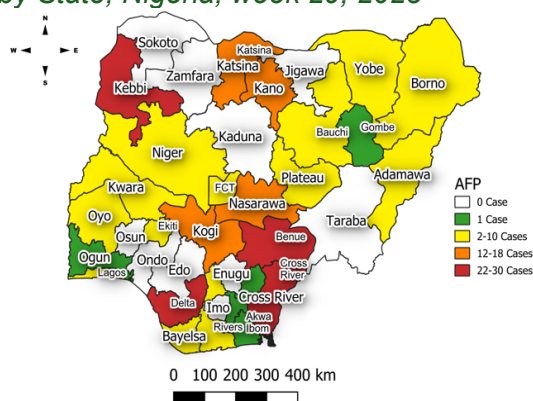


Figure 14: Location of suspected cases of AFP by State, Nigeria, week 29, 2023



Key points

- There were 116 suspected cases of AFP reported from 106 LGAs in 27 states. None was laboratory confirmed and no death was recorded.

National Influenza Sentinel Surveillance

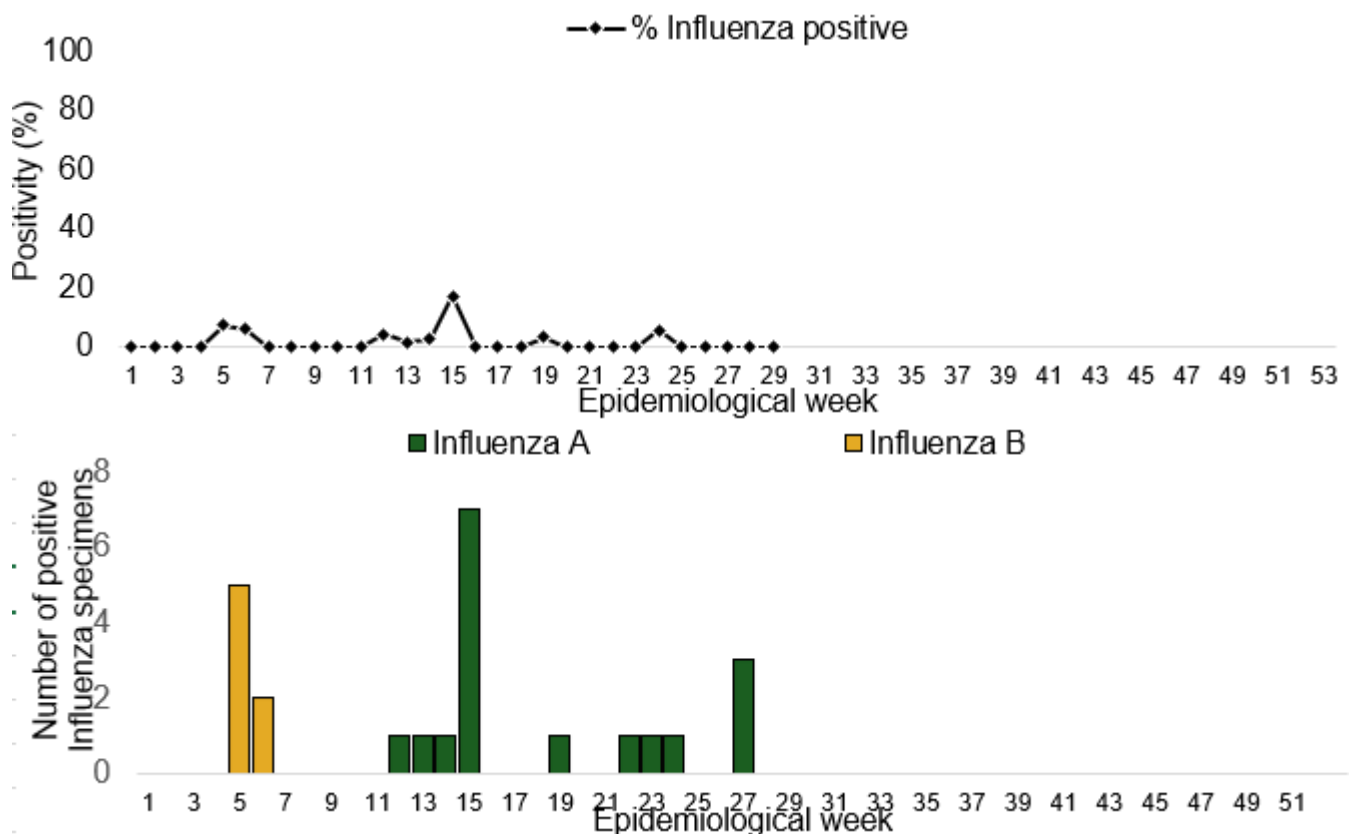
Year to date (week 1 – 29)

Suspected cases	Suspected ILI	Suspected SARI	Total Confirmed Cases	Confirmed cases by type	
				Influenza A	Influenza B
867	552	315	24 (2.5%)	17(63.2%)	7(36.8%)
))

Week 29

Suspected Cases	Confirmed Cases	Confirmed Case by type	
		Influenza A	Influenza B
10	0	0	0

Figure 15: Number of influenza positive specimens by type and percentage positive by epidemiological week, 2023.



Coronavirus Disease (COVID-19)

Week 29

Suspected cases	Confirmed cases	Deaths	Number of States and LGAs affected
15	2	0	State: 1+FCT LGA: 3

Year to date (Week 1- 29)

Test conducted	Confirmed cases	Deaths	Number of States and LGAs affected
3426	474	1	State: 29 + FCT LGA: 57

Figure 16: Epidemic curve of confirmed cases of COVID-19, Nigeria, week 29, 2023

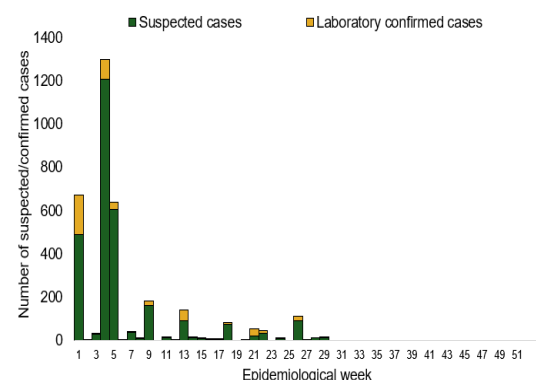
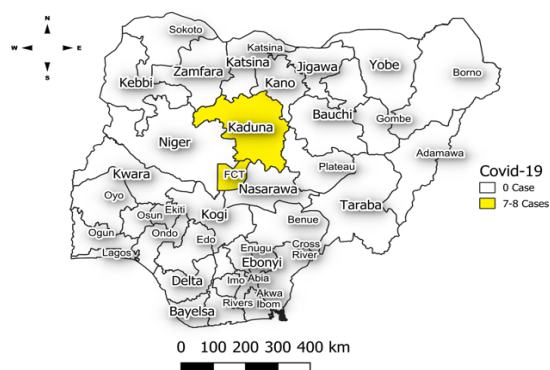


Figure 17: Location of confirmed cases of COVID-19 by State, Nigeria, as at week 29, 2023



Key points

- There were 15 suspected cases of Covid 19 reported from three LGA in Kaduna state and FCT. There were two laboratory confirmed cases and no death was recorded.

Actions

To date:

- Multi-sectoral Public Health Emergency Operation Centres (PHEOC) activated at the National and affected States
- Engagement meetings with state teams on the ongoing response, Sitrep reporting and Ag-RDT data harmonization, challenges, and way forward.
- Mainstreaming of COVID-19 response activities into routine public health interventions such as surveillance, risk communication, testing etc.

Diphtheria

Week 29

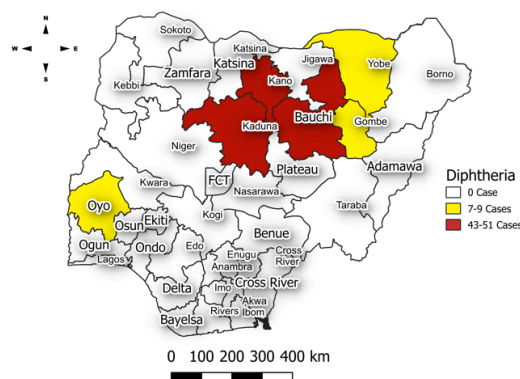
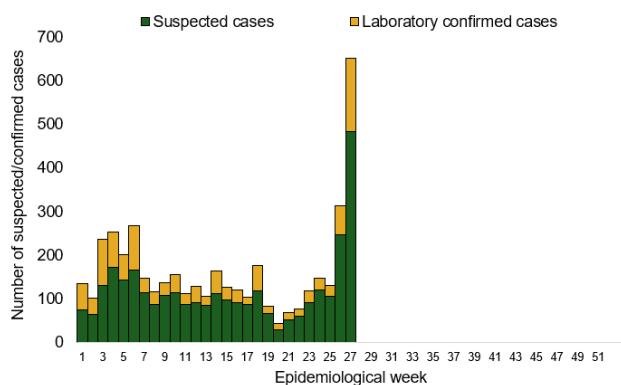
Suspected cases	Confirmed cases	Deaths	Number of States and LGAs affected
175	103	3	State: 6 LGA: 20

Year to date (week 1 – 29)

Suspected cases		Confirmed cases		Deaths		CFR	
2022	2023	2022	2023	2022	2023	2022	2023
0	3850	0	1387	0	122	0%	3.2%

Figure 18: Number of suspected and confirmed cases of Diphtheria, Nigeria, weeks 1 – 29, 2023

Figure 19: Location of suspected cases of Diphtheria by State, Nigeria, week 29, 2023



Key points

- There were 175 suspected cases of Diphtheria reported from 20 LGAs in six states. There were 103 confirmed cases, and 3 deaths were recorded.

Actions

To date

- Multi-sectoral Public Health Emergency Operation Centres (PHEOC) activated at the National and affected States
- Harmonisation of surveillance and laboratory data from across states and laboratories.
- Provision of off-site surveillance support to affected States.
- Conducting data quality checks on surveillance data from affected states

Event Based Surveillance (EBS)

Week 29

Call Summary per Call Hub as of week 29, 2023

Call Hubs	NCDC	GLO	Total
Successful Calls	96	0	96
Failed Calls	88	0	88

Number of Received/Resolved Health Declaration calls/emails for week 29

Calls	Emails	WhatsApp/texts
10	20	5

Disease conditions and events of public health importance captured as signals for the reporting week 29, 2023.

Number of Signals Category by Epi Week																														
SN	Epi Week	1	2	3	4	5	6	7	8	9	10	11	12	13	14	15	16	17	18	19	20	21	22	23	24	25	26	27	28	29
1	COVID19	0	0	0	0	0	0	0	0	0	0	0	0	0	0	0	0	0	0	0	0	0	0	0	0	0	0	0	0	0
2	Lassa Fever	0	1	0	1	0	0	0	0	0	0	0	0	0	0	0	0	0	0	0	0	0	0	1	0	0	0	0	0	0
3	Yellow Fever	0	0	0	0	0	0	0	0	0	0	0	0	0	0	0	0	0	0	0	0	0	0	0	0	0	0	0	0	0
4	CSM	0	0	0	0	0	0	0	0	0	0	0	0	1	0	0	0	0	0	0	0	0	0	0	0	0	0	0	0	0
5	Cholera	0	0	1	0	0	0	0	0	0	0	0	0	0	0	0	0	0	0	0	0	0	0	0	0	0	0	0	0	0
6	Monkey Pox	1	0	0	0	0	0	0	0	0	0	0	0	0	0	0	0	0	0	0	0	0	0	0	0	0	0	0	0	0
7	Measles & Rubella	0	0	0	0	0	0	0	0	0	0	0	0	0	0	0	0	0	0	0	0	0	0	0	0	0	0	0	0	0
8	One Health Related Signals	0	0	0	0	0	0	0	0	0	0	0	0	0	0	0	0	0	0	0	0	0	0	0	0	0	0	0	0	0
9	Unexplained cluster of illness/ death in humans	0	0	0	0	0	0	0	0	0	0	0	0	1	1	0	0	0	0	0	0	0	0	0	0	0	0	0	0	0
10	Disease or events of international or National Concern	0	0	0	0	0	0	0	0	0	0	0	0	0	0	0	0	0	0	0	0	0	0	0	0	0	0	0	0	0
11	Others	0	0	5	1	0	1	0	0	0	0	0	0	0	0	0	0	0	1	0	0	0	1	1	0	2	0	0	1	0
	TOTAL	1	1	6	1	0	1	0	0	0	0	0	2	1	0	0	0	0	0	0	0	1	2	0	2	0	0	0	0	

Key points

For the reporting week 29:

- **196** Calls were successfully routed to agents and answered.
- **88** calls not routed to agents (Failed call)
- **184** total number of calls (successful and failed)
- Percentage of failed to total inbound calls **47.8%**
- **0 signal picked**

For week 1 - 29

- **11,839** calls successfully routed to agents and answered
- **2,296** calls not routed to agents (Failed call)
- **14,135** total inbound calls recorded
- Percentage of failed to total inbound calls: **16.2%**
- **20** Signals picked and escalated to 36 states and FCT

Categories of Calls

- Report of health conditions
- Health Declaration-related queries
- Yellow Fever Vaccine enquiries
- Travel advisory enquiries
- TB related enquiries
- COVID19 Vaccine enquiries
- General enquiries
- Hoax call and others