

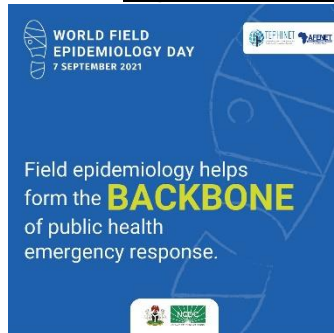
**Nigeria Centre for Disease Control**  
Protecting the health of Nigerians

## Weekly Epidemiological Report

### Week 33: 16<sup>th</sup> – 22<sup>nd</sup> August, 2021

#### Highlight of the Week

#### Nigeria Commemorates the World Field Epidemiology Day



In Nigeria, Field Epidemiologists have continued to play an unprecedented role in strengthening national health security. This is being achieved through application of their skills and research findings in prevention, timely detection and prompt response to outbreaks of epidemic prone diseases (EPDs) and other public health threats across the 36 states and the Federal Capital Territory. With this, a significant number of morbidity and mortality which would have occurred have been averted. However, there are still limited number of Field Epidemiologists given Nigeria's population density as well as a significant number and frequency of outbreaks reported yearly.

To fill the above gap, in 2008, the Federal Ministry of Health (FMoH) through the Nigeria Centre for Disease Control (NCDC) and the Federal Ministry of Agriculture and Rural Development collaborated to establish and strengthen the Nigeria Field Epidemiology and Laboratory Training Programme (NFELTP). We are gradually building a critical mass of field epidemiologists which is in line with the workforce development component of the International Health Regulations.

Aside contributing to detection and control of outbreaks in the past, the critical role of field epidemiologists in the current level of control of the ongoing Coronavirus cannot be overemphasised. Being the longest and largest outbreaks, Field Epidemiologists have continued to support states to sustain response activities across diverse areas of response activities including but not limited to emergency risk assessment, field investigation; simulation exercises etc. Some of them also currently serve as State Epidemiologists / Incident Managers in different states in Nigeria. The importance of these roles cannot be over-emphasised!

In recognition of afore-mentioned roles of Filed Epidemiologists, ***the NCDC on the 7<sup>th</sup> of September, joined the Training Programmes in Epidemiology and Public Health Network (TEPHINET) and the global public health community to commemorate the first ever World Field Epidemiology Day. With the theme "Celebrating Our Public Health Disease Detectives", we are particularly grateful to all our Field Epidemiologists for their dedication and selflessness in the current efforts towards controlling COVID-19 outbreaks in Nigeria.***

As Nigeria's national focal point for International Health Regulations, the NCDC will continue to intensify efforts towards achieving the global goal of one trained field epidemiologist (or its equivalent) to 200,000 population. Government at all levels as well as relevant stakeholders are also urged to prioritise investment in field epidemiology for the benefit of national health security.

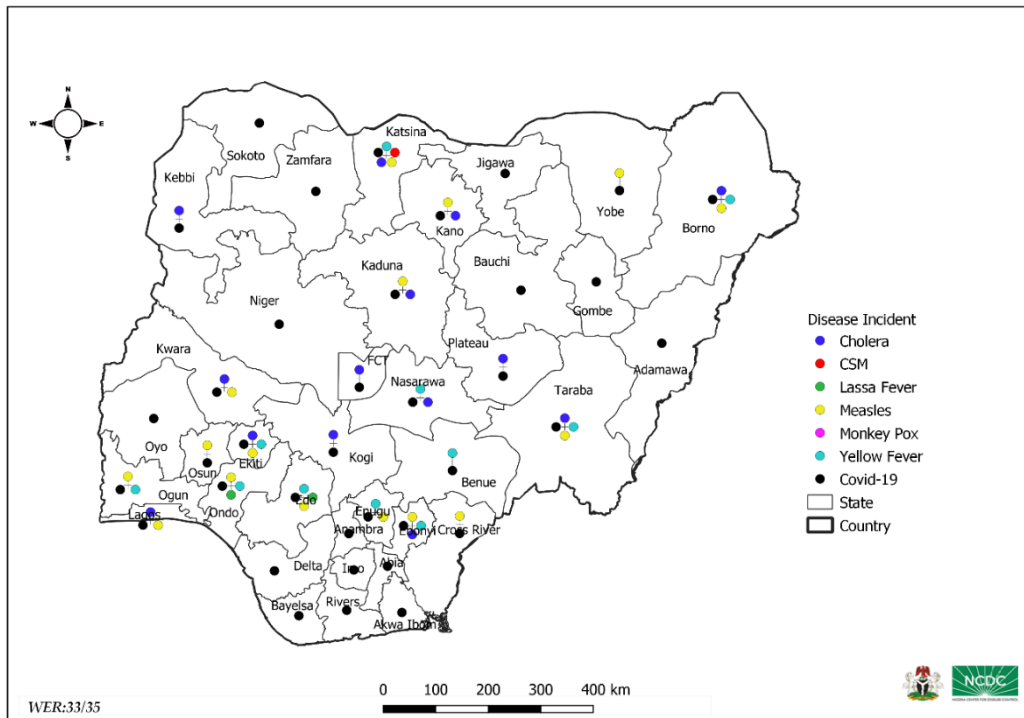
## Summary of Incidents

### Ongoing incidents

2

Ongoing incidents are defined as confirmed cases where a national EOC or equivalent has been activated (EOC is currently activated for COVID-19 and Cholera)

Other incidents are those with confirmed cases for which EOC is not activated



Data Source: SITAware

## Summary

Week 33: 16<sup>th</sup> – 22<sup>nd</sup> August, 2021

Note: Coronavirus Disease is from outbreak onset till week 35 2021: 5<sup>th</sup> September, 2021)

Lassa Fever <sup>1,2</sup>	Cerebrospinal Meningitis (CSM) <sup>3,4</sup>	Yellow Fever <sup>3,4</sup>
58 Suspected case(s)	2 Suspected case(s)	32 Suspected case(s)
2 Confirmed case(s)	0 Confirmed case(s)	0 Confirmed case(s)
0 Death(s)	0 Death(s)	0 Death(s)
Cholera <sup>3,4</sup>	Measles <sup>3,4</sup>	Monkeypox <sup>1,4</sup>
2910 Suspected case(s)	185 Suspected case(s)	0 Suspected case(s)
3 Confirmed case(s)	0 Confirmed case(s)	0 Confirmed case(s)
94 Death(s)	0 Death(s)	0 Death(s)
Acute Flaccid Paralysis (AFP) <sup>3,4</sup>	National Sentinel influenza surveillance <sup>5</sup>	Coronavirus Disease as at week 35 <sup>1</sup>
86 Suspected case(s)	0 Suspected case(s)	2,858,319 Suspected case(s)
0 Confirmed case(s)	0 Confirmed case(s)	195,519 Confirmed case(s)
		2,582 Death(s)

Timeliness of reports <sup>3</sup>	Completeness of reports <sup>3</sup>
88.5% Last 4 weeks	100% Last 4 weeks
94.3% Year to date	100% Year to date

### Notes

- Information for this disease was retrieved from the Technical Working Group and Situation Reports
- Case Fatality Rate (CFR) for this disease is reported for confirmed cases only
- Information for this disease was retrieved from IDSR 002 data
- CFR for this disease is reported for total cases i.e. suspected + confirmed
- Information for sentinel influenza was retrieved from the laboratory

## Lassa Fever

### Week 33

Suspected cases	Confirmed cases	Deaths	Number of States and LGAs affected
58	2	0	State: 2 LGA: 2

### Year to date (week 1 – 33)

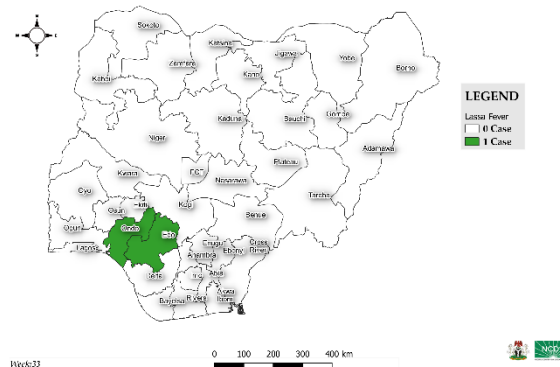
Suspected cases		Confirmed cases		Deaths		CFR	
2020	2021	2020	2021	2020	2021	2020	2021
5527	2790	1061	356	222	*73	20.9%	20.5%

\*Outbreak data added to routine data

Figure 1: Number of suspected and confirmed cases of Lassa Fever, Nigeria, Weeks 1 – 33, 2021



Figure 2: Location of **confirmed** cases of Lassa Fever by State, Nigeria, week 33, 2021



## Key points

- There were 58 suspected cases, two were laboratory confirmed and no death was recorded from two LGAs in two states

## Actions

### To date:

- Conducted 2021 Lassa fever (LF) high burden states preparedness/response engagement meeting
- Dissemination of reviewed case management and safe burial practices guidelines
- Ensured all five LF molecular laboratories in the NCDC network are working at full capacity for timely testing of samples with reduced turnaround time

### Planned:

- Finalise LF five-year strategic plan

## Cerebrospinal Meningitis (CSM)

### Week 33

Suspected cases	Confirmed cases	Deaths	Number of States and LGAs affected
2	0	0	State: 1 LGA: 1

### Year to date (week 1 – 33)

Suspected cases		Confirmed cases		Deaths		CFR	
2020	2021	2020	2021	2020	2021	2020	2021
517	174	11	11	10	3	1.9%	1.7%

Figure 3: Number of suspected and confirmed cases of CSM, Nigeria, weeks 1 – 33, 2021

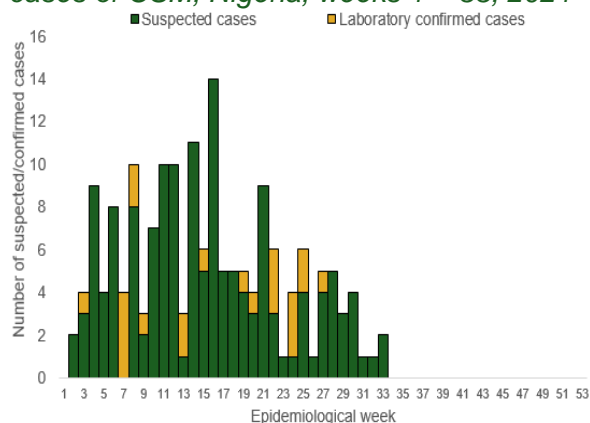
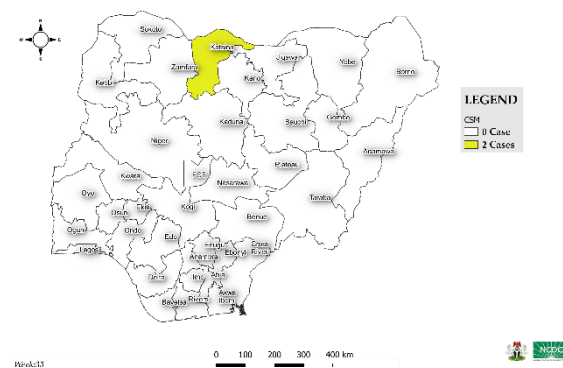


Figure 4: Location of suspected cases of CSM by State, Nigeria, week 33, 2021



### Key points

- There was two suspected cases of cerebrospinal meningitis (CSM) reported from Kankia LGA in Katsina state. It was not laboratory confirmed and no death was recorded.

### Actions

#### To date:

- National CSM TWG meets weekly to review reports from states and plan appropriately
- Enhanced surveillance in all states

#### Planned:

- Continue harmonisation of the national line list and SORMAS data
- Continue to ensure that states reporting cases send their line lists and collect CSM samples

## Yellow Fever

### Week 33

Suspected cases	Confirmed cases	Deaths	Number of States and LGAs affected
32	0	0	State: 11 LGA: 23

### Year to date (week 1 – 33)

Suspected cases		Confirmed cases		Deaths		CFR	
2020	2021	2020	2021	2020	2021	2020	2021
1496	1495	13	48	0	4	0%	0.3%

Figure 5: Number of suspected and confirmed cases of Yellow Fever, Nigeria, weeks 1 – 33, 2021

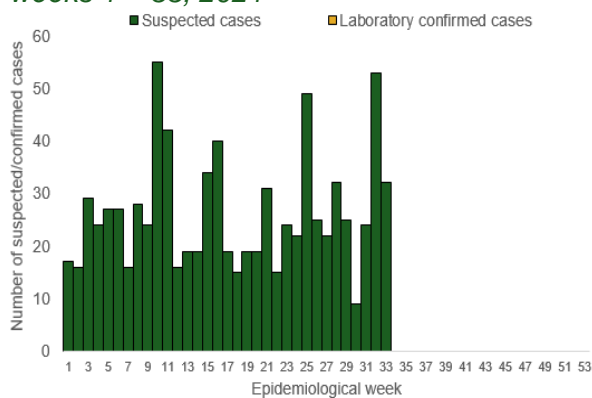
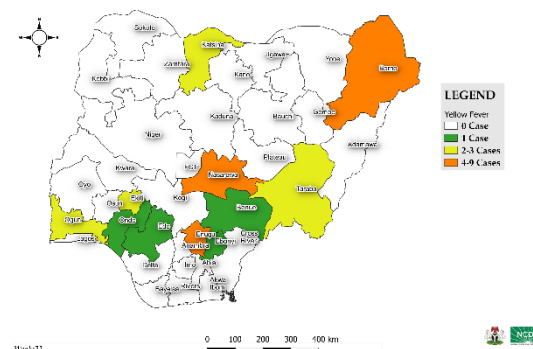


Figure 6: Location of suspected cases of Yellow Fever by States, Nigeria, week 33, 2021



### Key points

- There were 32 suspected cases of Yellow Fever (YF) reported from 23 LGAs in 11 states. None were laboratory confirmed and no death was recorded

### Actions

#### To date:

- National YF multi-partner Technical Working Group (TWG) continues to coordinate activities across states.
- Daily monitoring and analysis of surveillance data across the country to guide response activities
- Commenced yellow fever testing for the South-East and South-South at University of Nigeria Teaching Hospital Enugu and University of Benin Teaching Hospital Benin City respectively

#### Planned:

- Continue implementation of the Incident Action Plan (IAP) and mobilize required resources for yellow fever preparedness

- Develop a protocol to guide response in states/LGAs with YF confirmed cases where vaccination campaigns have been conducted

## Cholera

### Week 33

Suspected cases	Confirmed cases	Deaths	Number of States and LGAs affected
2910	3	94	State: 13 + FCT LGA: 93

### Year to date (week 1 – 33)

Suspected cases		Confirmed cases		Deaths		CFR	
2020	2021	2020	2021	2020	2021	2020	2021
1081	46778	43	273	59	1317	5.5%	2.8%

Figure 7: Number of suspected and confirmed cases of Cholera, Nigeria, weeks 1 – 33, 2021

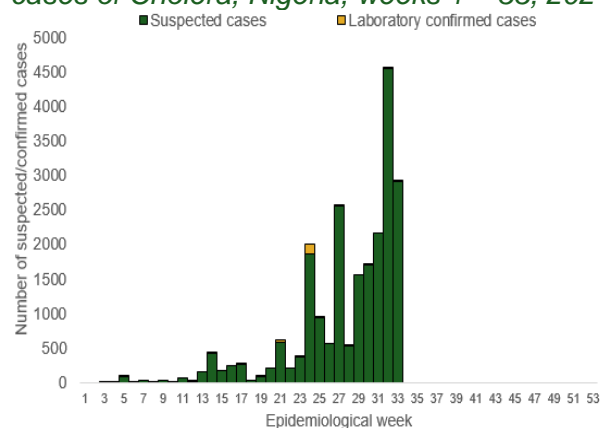
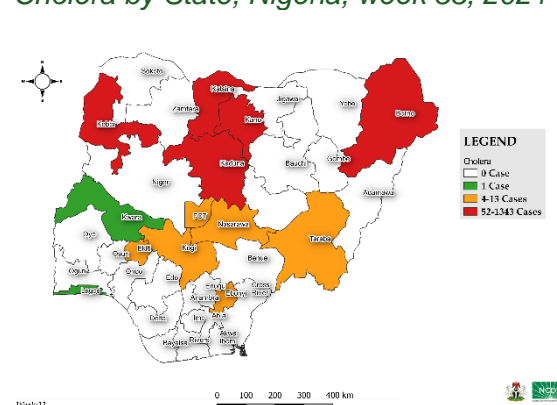


Figure 8: Location of suspected cases of Cholera by State, Nigeria, week 33, 2021



### Key points

- There were 2910 suspected cases of cholera reported from 93 LGAs in 13 states and FCT. Three cases were laboratory confirmed and 94 deaths were recorded

### Actions

#### To date

- National Cholera Multi-Sectoral Technical Working Group (TWG) is monitoring all states and supporting affected states
- National Rapid Response Teams (RRTs) with response commodities were deployed to support the response in all affected states
- Cholera jingles being aired in English and local languages across the country

#### Planned:

- Continue follow up and monitoring of non-reporting states
- Build capacity for sample collection, transportation, and laboratory diagnosis across states

## Measles

### Week 33

Suspected cases	Confirmed cases	Deaths	Number of States and LGAs affected
185	0	0	State: 15 LGA: 60

### Year to date (week 1 – 33)

Suspected cases		Confirmed cases		Deaths		CFR	
2020	2021	2020	2021	2020	2021	2020	2021
20488	17726	2063	876	111	204	0.5%	1.2%

Figure 9: Number of suspected and confirmed cases of Measles, Nigeria, weeks 1 – 33, 2021

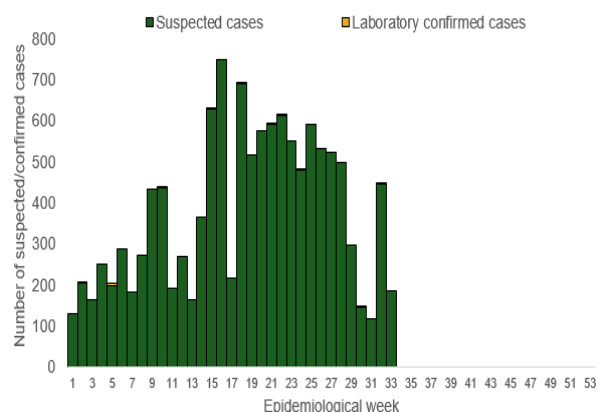
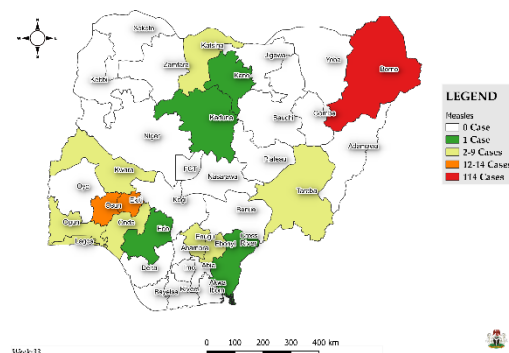


Figure 10: Location of suspected cases of Measles by State, Nigeria, week 33, 2021



### Key points

- There were 185 suspected cases of Measles reported from 60 LGAs in 15 states. None were laboratory confirmed and no death was recorded

### Actions

#### To date

- National Measles TWG is closely monitoring measles surveillance data and providing feedback to relevant agencies and development partners
- Ongoing weekly surveillance and laboratory data harmonisation

#### Planned:

- Intensify follow up with states to update and transmit line list
- Continue monthly measles surveillance data review



## Monkeypox

### Week 33

Suspected cases	Confirmed cases	Deaths	Number of States and LGAs affected
0	0	0	State: 0 LGA: 0

### Year to date (week 1 – 33)

Suspected cases		Confirmed cases		Deaths		CFR	
2020	2021	2020	2021	2020	2021	2020	2021
21	79	3	23	0	0	0%	0%

Figure 11: Number of suspected and confirmed cases of Monkeypox, Nigeria, weeks 1 – 33, 2021

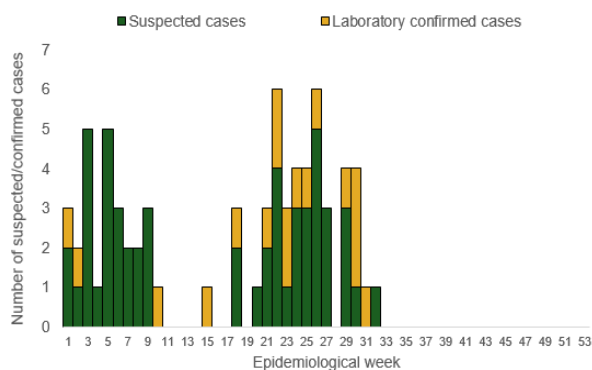
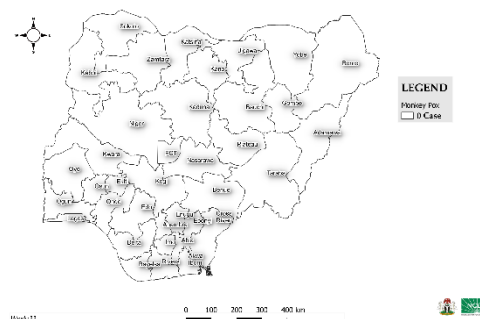


Figure 12: Location of suspected cases of Monkeypox by State, Nigeria, week 33, 2021



### Key points

- There was no suspected case of Monkeypox reported this week.

### Actions

#### To date

- Engagement of community and LGA surveillance officers to support state and LGA surveillance teams
- National Monkeypox Technical Working Group (TWG) is monitoring activities in all states

#### Planned:

- Weekly follow up calls/emails to states surveillance team and MPX treatment facilities
- Continue onsite/offsite support to states

## Acute Flaccid Paralysis (AFP)

### Week 33

Suspected cases	Confirmed cases	Deaths	Number of States and LGAs affected
86	0	0	State: 21 + FCT LGA: 75

### Year to date (week 1 – 33)

Suspected cases		Confirmed cases		Deaths		CFR	
2020	2021	2020	2021	2020	2021	2020	2021
2874	2206	0	0	0	0	0%	0%

Figure 13: Number of suspected and confirmed cases of AFP, Nigeria, weeks 1 – 33, 2021

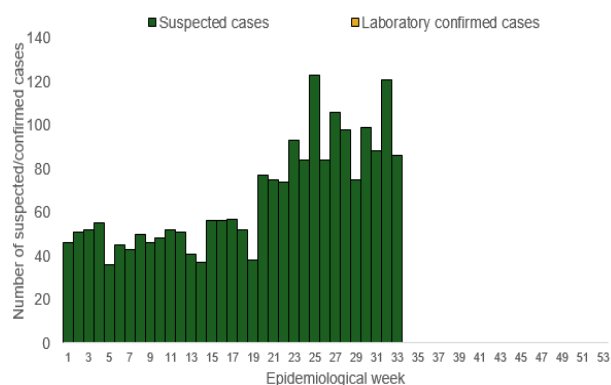
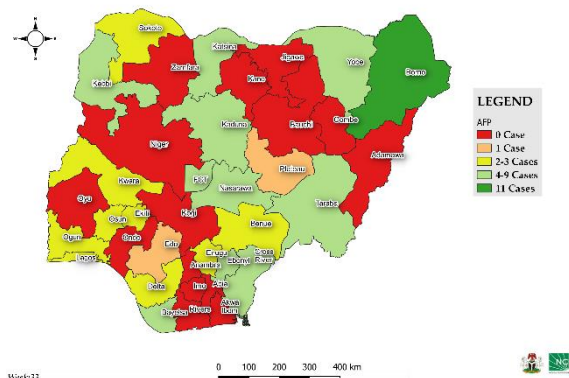


Figure 14: Location of suspected cases of AFP by State, Nigeria, week 33, 2021



### Key points

- There were 86 suspected cases of AFP reported from 75 LGAs in 21 states & FCT. None were laboratory confirmed and no death was recorded.

## National Influenza Sentinel Surveillance

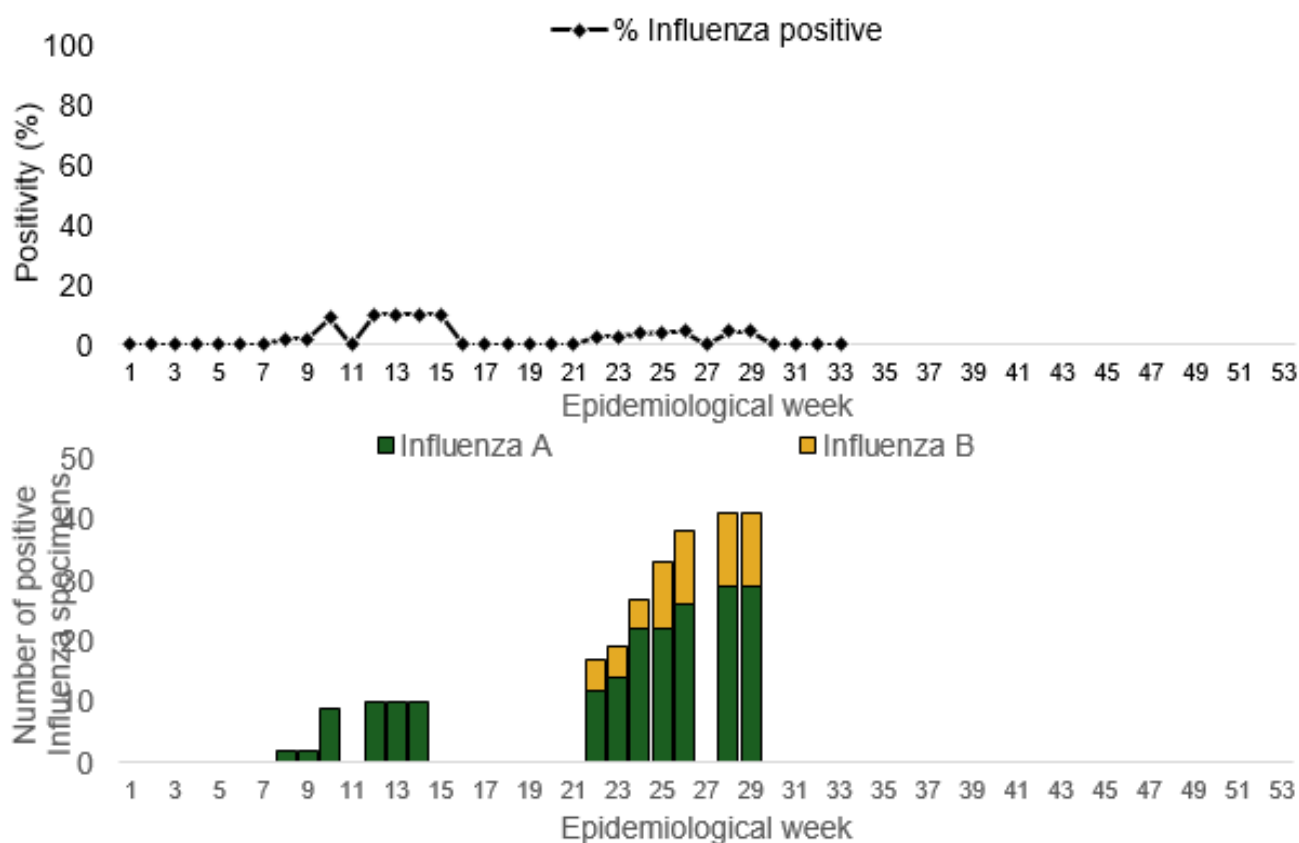
### Year to date (week 1 – 33)

	Suspected cases	Suspected ILI	Suspected SARI
Number (Percentage)	999	887 (88%)	112 (12%)

### Week 33

	Confirmed cases		Confirmed ILI		Confirmed SARI	
	Influenza A	Influenza B	Influenza A	Influenza B	Influenza A	Influenza B
Number	0	0	0	0	0	0
Positivity (%)	0%	0%	0%	0%	0%	0%

Figure 15: Number of influenza positive specimens by type and percentage positive by epidemiological week, 2021.



## Coronavirus Disease (COVID-19)

From outbreak onset (Feb 27 2020) to epi-week 35, 2021

Suspected cases	Confirmed cases	Deaths	Number of States and LGAs affected
2,858,319	195,519	2,582	State: LGA:

Figure 16: Epidemic curve of confirmed cases of COVID-19, Nigeria, week 1, 2020 – 35, 2021

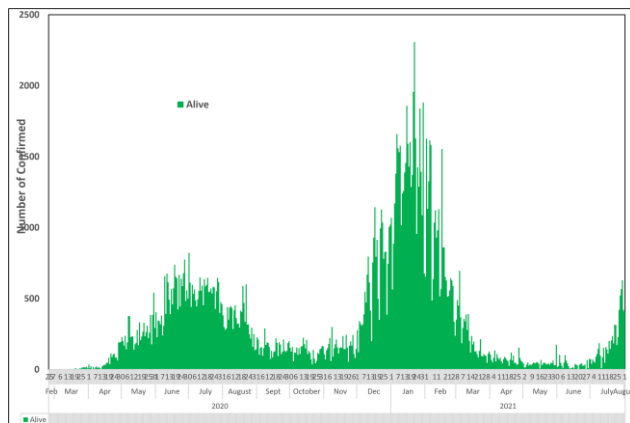
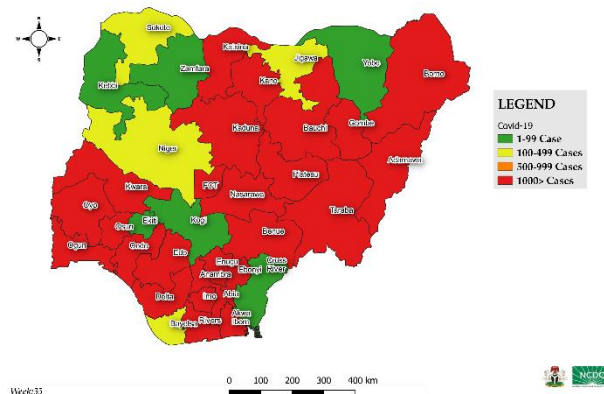


Figure 17: Location of **confirmed** cases of COVID-19 by State, Nigeria, as at week 35, 2021



## Actions

### To date:

- National COVID-19 multi-partner Emergency Operations Centre (EOC) continues to coordinate response activities across states
- Concluded update and development of version five of the national guideline for clinical management of COVID-19
- Reviewed surveillance data tools for effective data collection
- Conducted Ag-RDT screening for members of staff of the Federal Ministry of Women Affairs and Federal Ministry of Mines and Steel Development

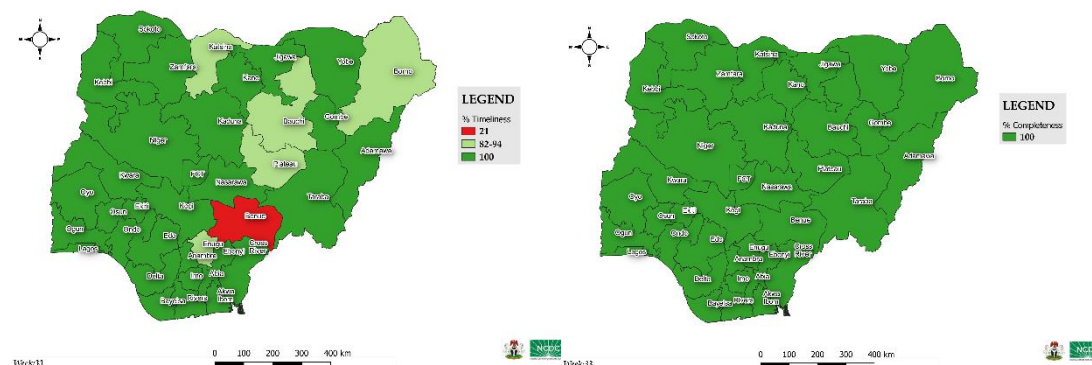
### Planned:

- Develop strategic actions for long term response to COVID-19
- SORMAS Case Management module training in the South-South geopolitical zone
- Finalise data collection tools for Caritas Nigeria

## Timeliness and Completeness of Reports

### Week 32

Figure 18: A – Timeliness by State (%); B – Completeness by State (%), week 33, 2021



### Number of reports received on time, late or not received, the percentage timeliness and completeness, in the last 4 weeks and year to date

Nigeria Total Reports	Last 4 Weeks	Year to date
	Week 29– 33	Week 1 – 33
Reports sent on time	131	1151
Reports sent late	17	70
Reports not received	0	0
Timeliness	88.5%	94.3%
Completeness	100%	100%

### States with report(s) not received in week 33)

State	Week(s) report not received
NIL	NIL

## Timeliness and Completeness of Reports by State

Year to date (week 1 – 33)

State	Timeliness (%)	Completeness (%)
Abia	94	100
Adamawa	94	100
Akwa Ibom	100	100
Anambra	100	100
Bauchi	91	100
Bayelsa	100	100
Benue	21	100
Borno	79	100
Cross River	94	100
Delta	97	100
Ebonyi	100	100
Edo	97	100
Ekiti	100	100
Enugu	82	100
FCT	100	100
Gombe	94	100
Imo	97	100
Jigawa	97	100
Kaduna	97	100
Kano	100	100
Katsina	91	100
Kebbi	94	100
Kogi	97	100
Kwara	100	100
Lagos	100	100
Nasarawa	100	100
Niger	100	100
Ogun	100	100
Ondo	97	100
Osun	97	100
Oyo	97	100
Plateau	91	100
Rivers	97	100
Sokoto	100	100
Taraba	100	100
Yobe	94	100
Zamfara	100	100