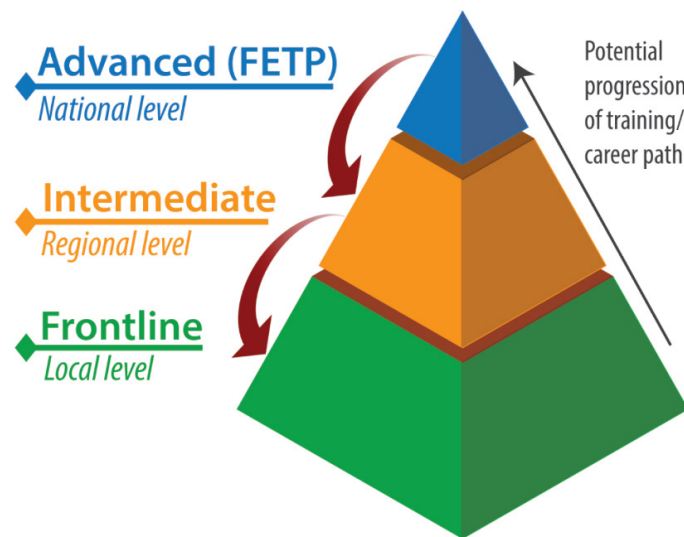


Summary of Programme Guideline for Nigeria Field Epidemiology Training Programme (Advanced)

Background

Field Epidemiology Training Programmes (FETPs) are competency-based training and service delivery in applied epidemiology and public health. As recognised by the International Health Regulations (IHR), Nigeria's FETP is implemented as a three-tiered pyramidal model to address the different levels of expertise required at the national, state, and local government levels.



Training model for field epidemiology workforce development

Nigeria's Advanced FETP has trained over 400 Field Epidemiologists on disease epidemiology, outbreak surveillance and response. Following ten years of existence of the Advanced NFETP, the programme has been reviewed in line with rapidly changing global and public health priorities.

Programme Goal

To strengthen and coordinate Nigeria's ability to respond to public health emergencies through training public health leaders in interventional epidemiology and developing institutionalised and sustainable public health workforce capacity.

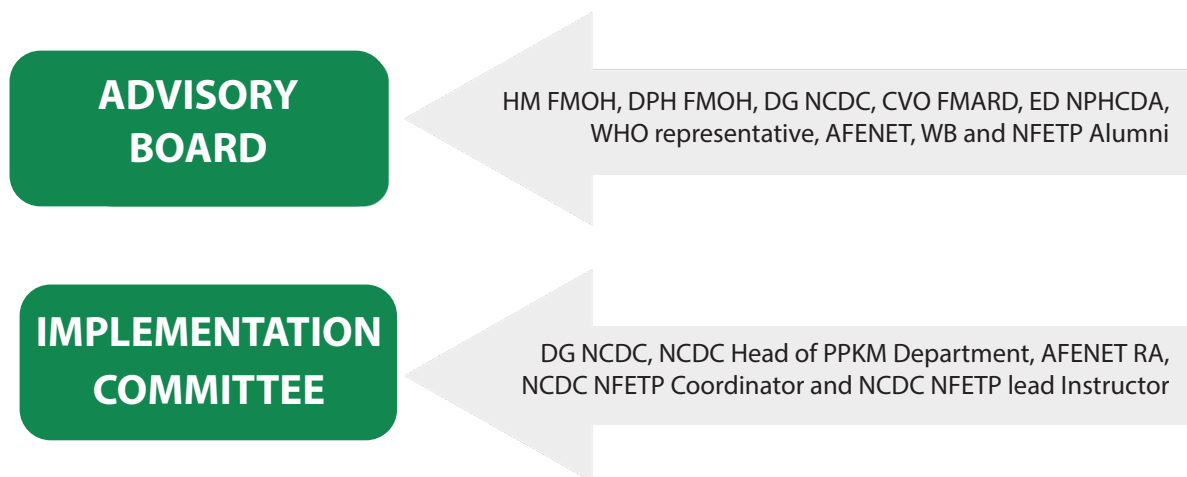
Programme Objectives

1. To train future leaders in applied epidemiology using a solutions-based approach to public health events
2. To provide epidemiological capacity as part of Nigeria's health security
3. To strengthen public health surveillance systems for human, animal, and environmental health
4. To strengthen the One Health approach to outbreak preparedness and response, including the linkage between public health, veterinary public health, and environmental health
5. To develop capacity that will contribute effectively to public health research activities for human, animal and environmental health
6. To improve communications and networking among public health practitioners and researchers in Nigeria and across African countries.

7. To strengthen affiliations with international organisations, such as the Training Programmes in Epidemiology and Public Health Interventions Network (TEPHINET), AFENET and other applied epidemiology and laboratory training programmes in other countries.

Governance and Management

As recommended by the Global Accreditation body of TEPHINET, the programme will be governed by an Advisory Board at the highest level and managed by an Implementation Committee.



What has Changed? (NFELTP → NFETP)

S/ No	Domain	Old Structure	New Structure
1.	Governance structure	Steering committee (FMoH, FMARD, NCDC, AFENET, University Lecturers)	Advisory Board Implementation Committee
2.	Funding	US CDC through AFENET	GoN through NCDC
3.	University affiliation	Yes	No
4.	Maximum cohort size	60	40
5.	Minimum entry prerequisite	Bachelors’ degree in sciences	MPH or related degree <i>*Applicants who have worked for at least five years in a public health role.</i>
	Certification	MPH	Fellowship
7.	Instructors for didactic sessions	University Lecturers based on university affiliation	Engagement on a consultancy basis
8.	Target audience	Public sector employees	Public and private sector employees
9.	Tracks	3 tracks	No tracks
10.	Course structure and curriculum	3 clusters All courses delivered physically	2 clusters Some courses delivered virtually
11.	Nomenclature	NFELTP	NFETP