



Lassa fever Situation Report

Epi Week 9: 27 February – 05 March 2023

Key Points

Table 1: Summary of current week (9), cumulative Epi week 1-9, 2023 and comparison with previous year (2022)

Reporting Period	Suspected cases	Confirmed cases	Probable cases	Deaths (Confirmed cases)	Case Fatality Ratio (CFR)	States and LGAs affected (Confirmed cases)
Current week (week 9)	295	40	0	5	12.5%	State(s): 5 LGA(s): 16
2023 Cumulative (week 1-9)	3272	676	4	109	16.1%	State(s): 22 LGA(s): 89
2022 Cumulative (week 9)	2822	597	27	111	18.6%	State(s): 22 LGA(s): 85

Highlights

- In week 9, the number of new confirmed cases decreased from 59 in week 8 2023 to 40 cases. These were reported from Bauchi, Ondo, Taraba, Edo, and Ebonyi States (Table 3)
- Cumulatively from week 1 to week 9, 2023, 109 deaths have been reported with a case fatality rate (CFR) of 16.1% which is lower than the CFR for the same period in 2022 (18.6%)
- In total for 2023, 22 States have recorded at least one confirmed case across 89 Local Government Areas (Figures 2 and 3)
- Seventy-two (72%) of all confirmed Lassa fever cases were reported from these three states (Ondo, Edo, and Bauchi) while 28% were reported from 2 states with confirmed Lassa fever cases. Of the 72% confirmed cases, Ondo reported 33%, Edo 29%, and Bauchi 10%
- The predominant age group affected is 21-30 years (Range: 1 to 93 years, Median Age: 32 years). The male-to-female ratio for confirmed cases is 1:0.8 (Figure 4)
- The number of suspected cases increased compared to that reported for the same period in 2022.
- One new Healthcare worker was affected in the reporting week 9
- National Lassa fever multi-partner, multi-sectoral Emergency Operations Centre (EOC) activated to coordinate the response activities at all levels

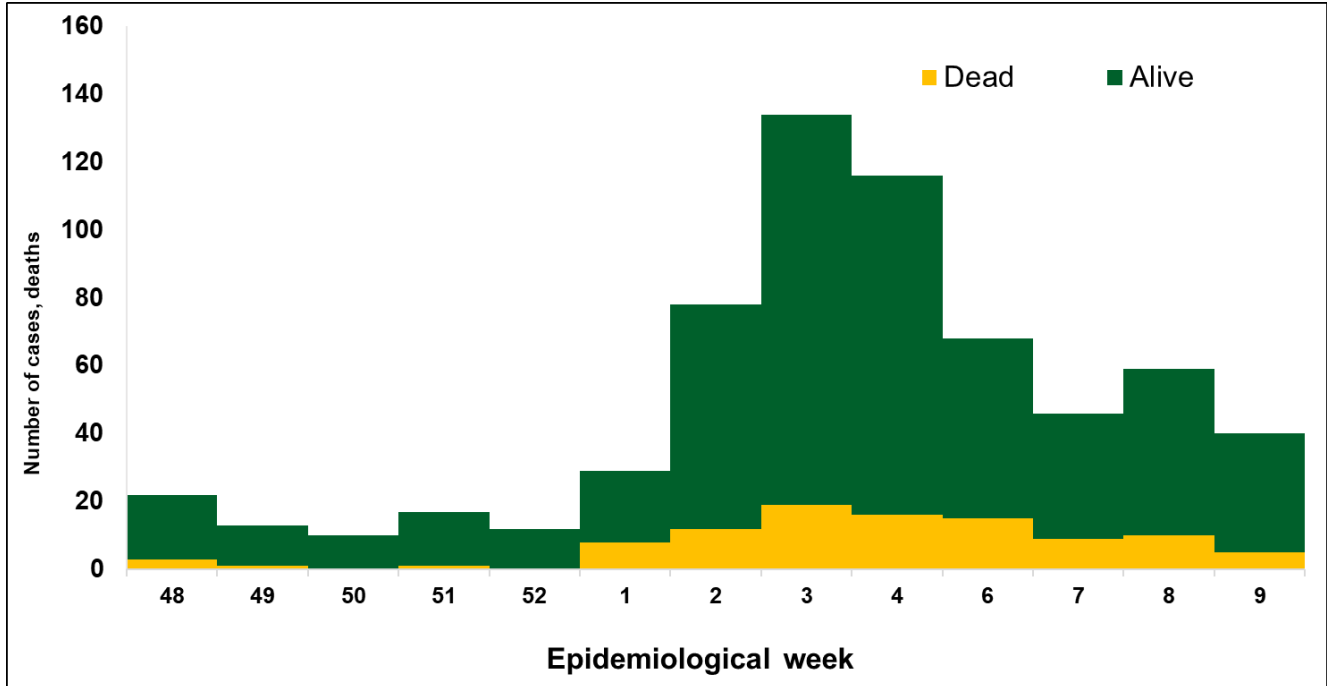


Figure 1. Confirmed Lassa fever cases in Nigeria epidemiological week 48, 2022 to week 9, 2023

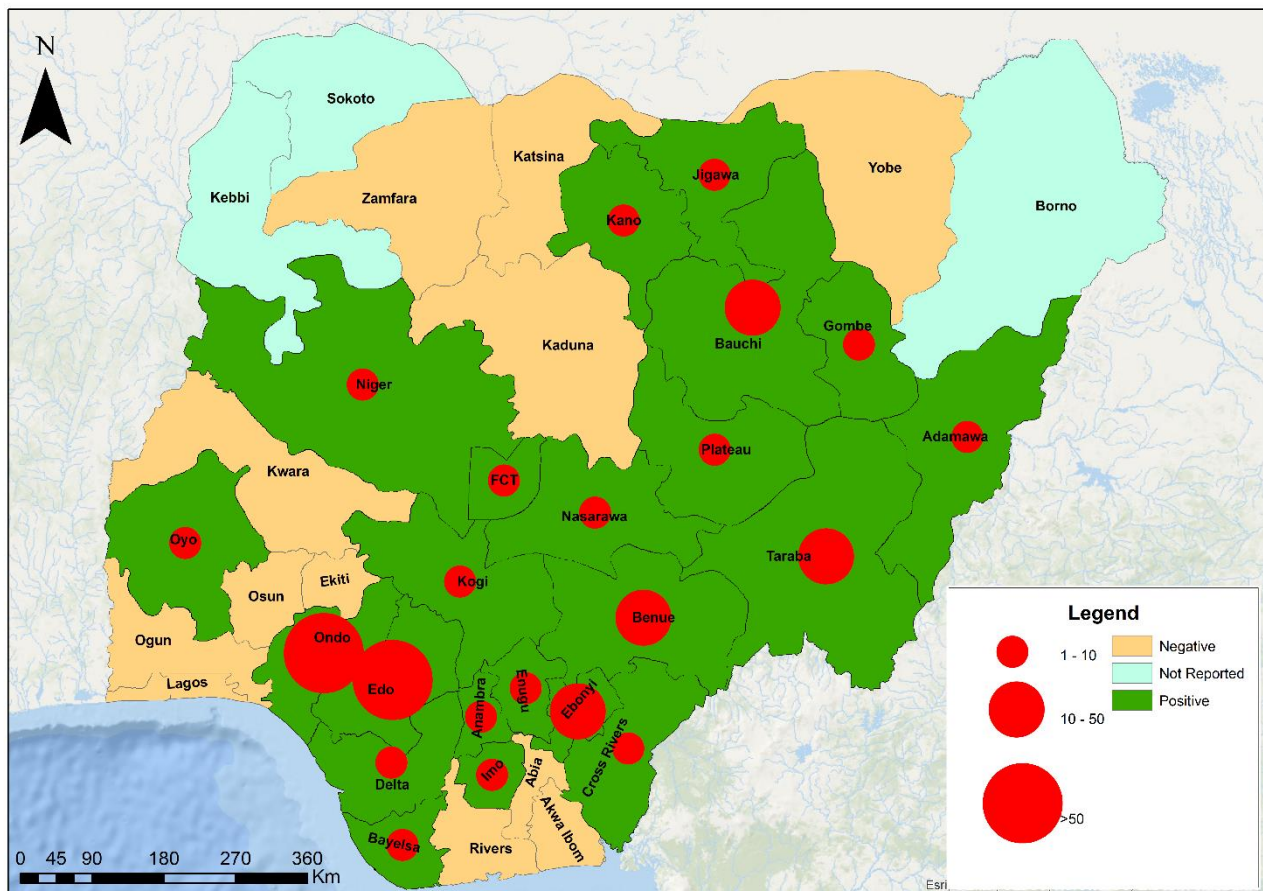


Figure 2. Confirmed Lassa fever cases by States in Nigeria, week 9, 2023

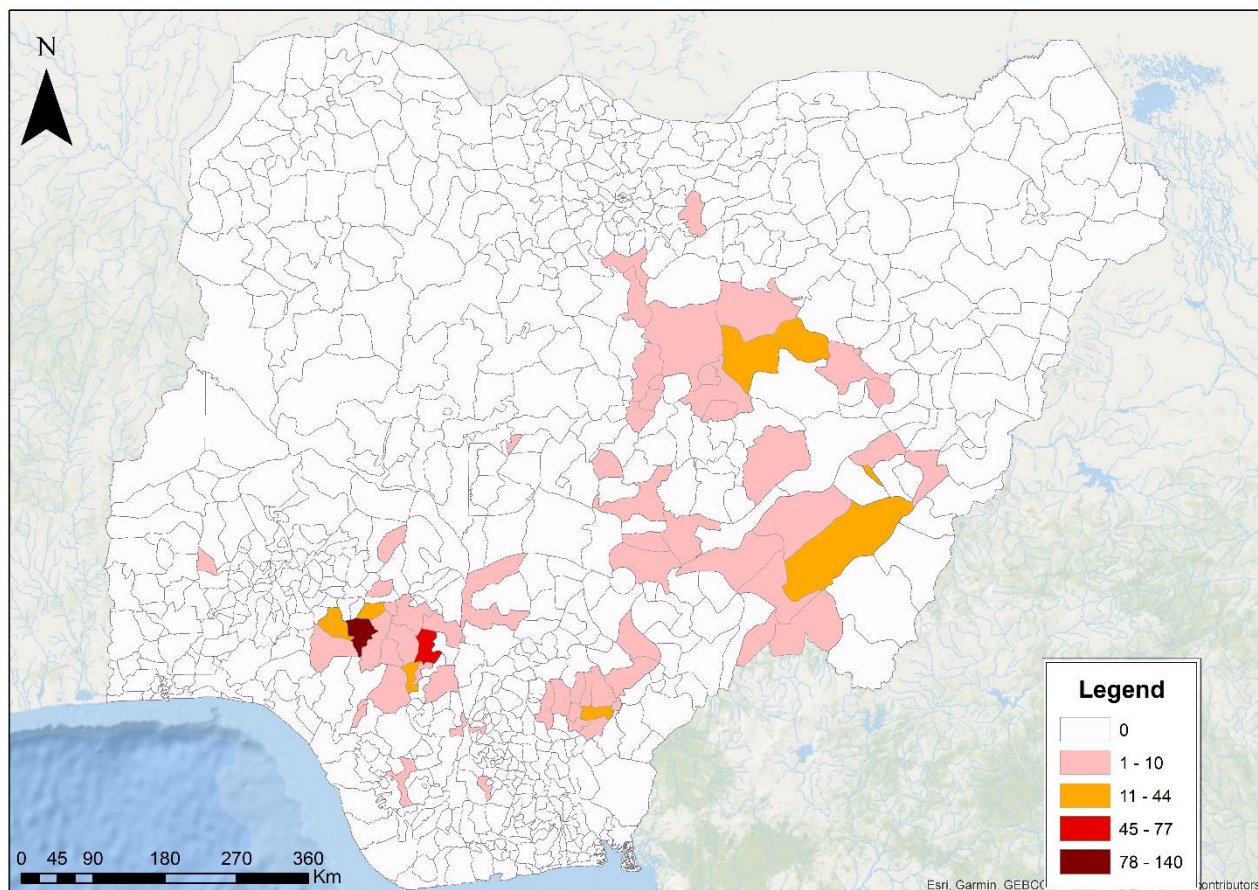


Figure 3. Confirmed Lassa fever rate per 100,000 population for LGAs in Nigeria, week 9, 2023

Table 2: Key indicators for current week 2023 and trend compared to previous week, Nigeria

Symptomatic contacts	Number for current week	Trend from previous week	Cumulative number for 2023
Probable cases	0	↓	4
Health Care Worker affected	1	↓	33
Cases managed at the treatment centres	35	↓	567
Contact tracing			
Cumulative contact listed	158	↓	4259
Contacts under follow up	516	↓	516
Contacts completed follow up	3739	↑	3739
Symptomatic contacts	0	↓	14
Positive contacts	0	↓	17
Contacts lost to follow up	0	↔	0

Key

- ↑ Increase
- ↓ Decrease
- ↔ No difference

Table 3. Weekly and Cumulative number of suspected and confirmed cases for 2023

States	Current week: (Week 9)					Cumulative (Week 1 - 9)					
	Cases			Deaths (Confirmed Cases)	Probable HCW*	Cases			Deaths(Confirmed Cases)		
	Suspected	Confirmed	Trend			Suspected	Confirmed	Probable HCW*			
1 Ondo	59	11	▲		2	853	221		8	22	
2 Edo	94	16	▲			1118	196		4	24	
3 Bauchi	53	5	▼		1	468	65	1	7	8	
4 Taraba	10	5	▼	1		184	65		3	23	
5 Ebonyi	16	3			2	120	37		3	19	
6 Benue	4		▼			73	32	2	1	3	
7 Nasarawa	7					106	13		3	2	
8 Plateau	6					42	11		1	1	
9 Kogi	1		▼			24	9		1	1	
10 Gombe	2					23	6				
11 Kano	5		▼			33	4				
12 Enugu	1					21	3			1	
13 Jigawa	1		▼			7	2				
14 Anambra	2					29	2		1	2	
15 Fct			▼			41	2				
16 Delta	2					15	2		1		
17 Bayelsa	12					14	1			1	
18 Adamawa						3	1				
19 Niger						4	1				
20 Oyo	2					9	1				
21 Imo						12	1			2	
22 Cross River	2					6	1				
23 Katsina						1					
24 Zamfara						1					
25 Abia						4					
26 Akwa-Ibom						2					
27 Yobe	1					5					
28 Ekiti	1					4					
29 Ogun						10					
30 Rivers	1					5					
31 Kwara						6					
32 Osun	2					6					
33 Kaduna	11					15					
34 Lagos						7					
Total	295	40	▼	0	1	5	3271	676	3	33	109

Key	
▼	Decrease
▲	Increase

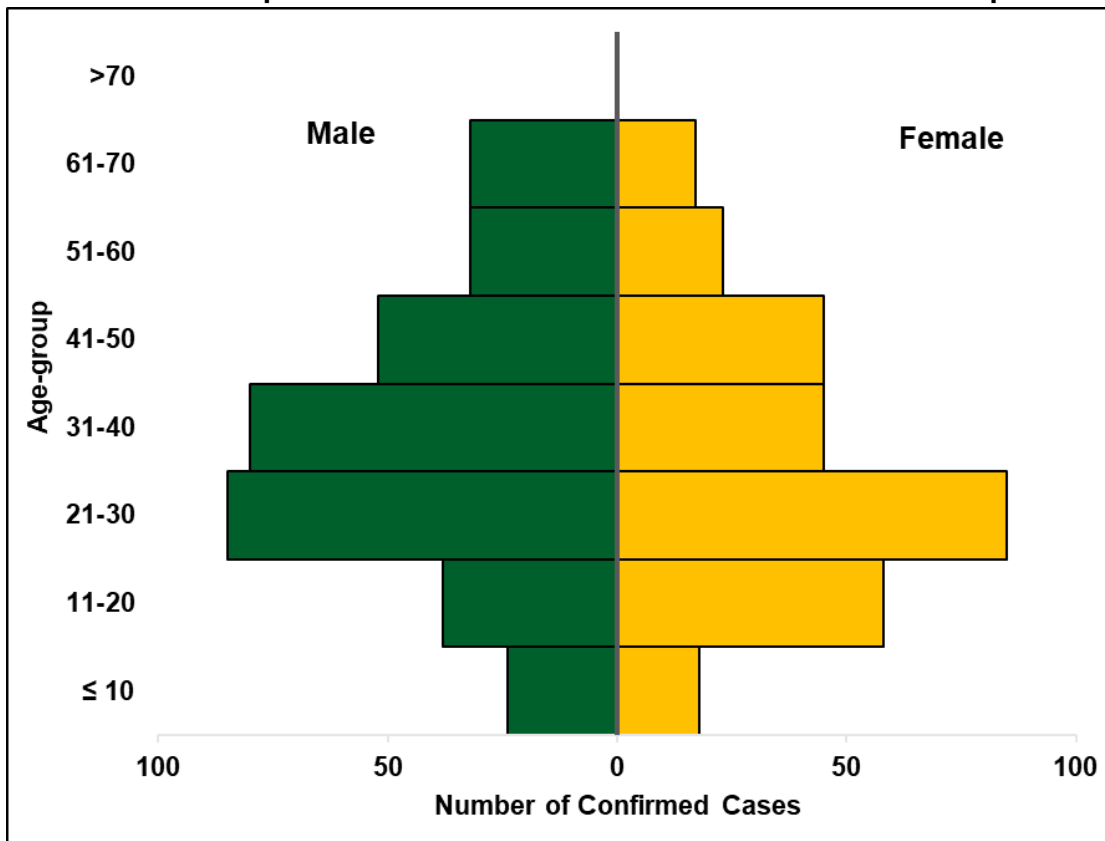


Figure 4. Age and sex pyramid showing the number of confirmed Lassa fever cases for 2023

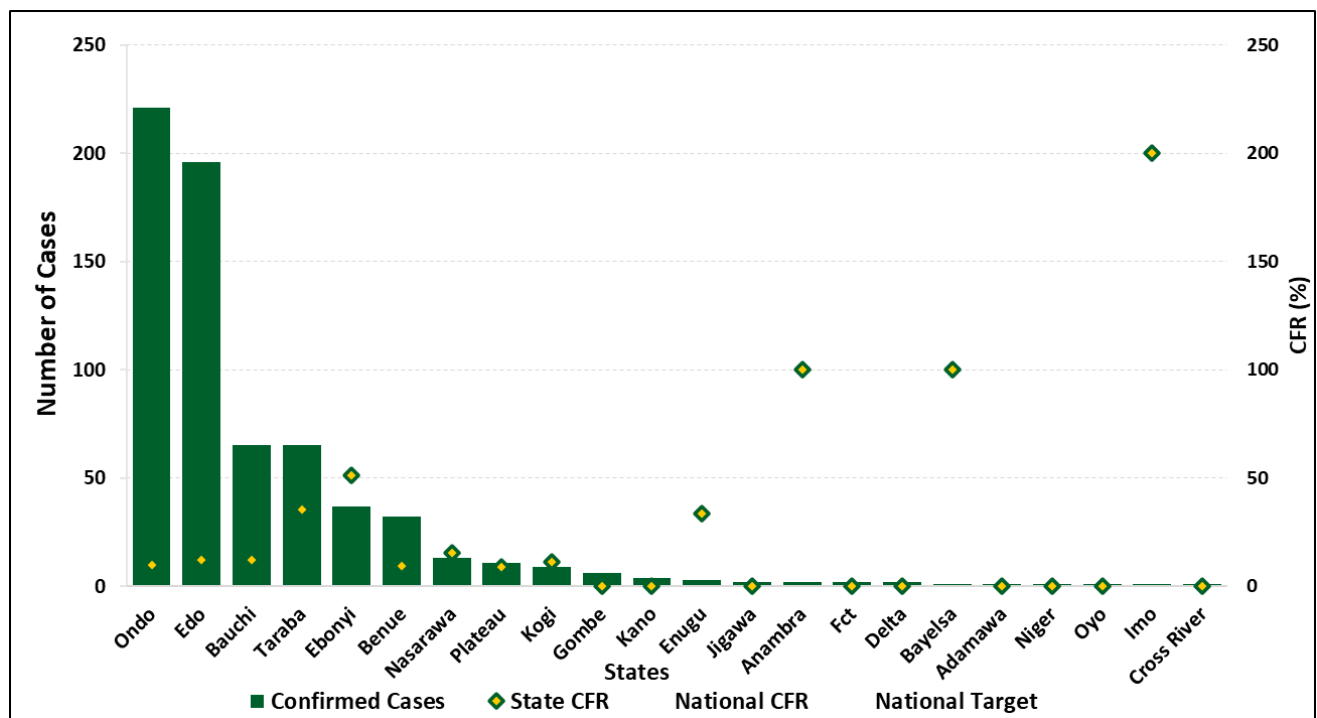


Figure 5: Number of confirmed cases with case fatality rate (CFR) by state week 9, 2023

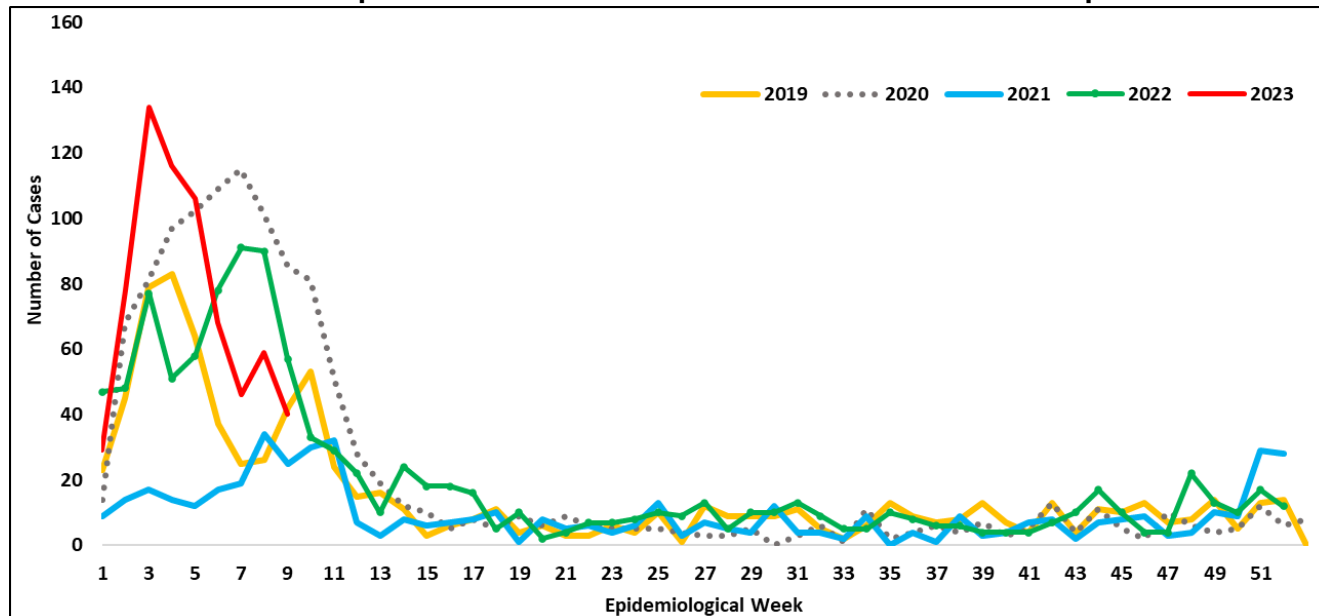


Figure 6: Trend of confirmed cases by epidemiological week, 2019– 2023, Nigeria

Challenges

- Late presentation of cases leading to an increase in CFR
- Poor health-seeking behaviour due to the high cost of treatment and clinical management of Lassa fever
- Poor environmental sanitation conditions observed in high-burden communities
- Poor awareness observed in high-burden communities

Notes on this report

Data Source

Information for this disease was case-based data retrieved from the National Lassa fever Emergency Operations Centre.

Case definitions

- **Suspected case:** any individual presenting with one or more of the following: malaise, fever, headache, sore throat, cough, nausea, vomiting, diarrhoea, myalgia, chest pain, hearing loss and either a. History of contact with excreta or urine of rodents b. History of contact with a probable or confirmed Lassa fever case within a period of 21 days of onset of symptoms OR Any person with inexplicable bleeding/hemorrhagia.
- **Confirmed case:** any suspected case with laboratory confirmation (positive IgM antibody, PCR or virus isolation)
- **Probable case:** any suspected case (see definition above) who died or absconded without collection of specimen for laboratory testing
- **Contact:** Anyone who has been exposed to an infected person, or to an infected person's secretions, excretions, or tissues within three weeks of last contact with a confirmed or probable case of Lassa fever

Calculations

- Case Fatality Rate (CFR) for this disease is reported for confirmed cases only

VIRAL HAEMORRHAGIC FEVER QUICK REFERENCE GUIDE

For social mobilization https://ncdc.gov.ng/themes/common/docs/vhfs/83_1517222929.pdf

For LGA Rapid Response Team https://ncdc.gov.ng/themes/common/docs/vhfs/82_1517222811.pdf

Healthcare worker laboratory https://ncdc.gov.ng/themes/common/docs/vhfs/81_1517222763.pdf

For healthcare workers https://ncdc.gov.ng/themes/common/docs/vhfs/80_1517222586.pdf

For community informant https://ncdc.gov.ng/themes/common/docs/vhfs/79_1517222512.pdf

NATIONAL GUIDELINES FOR LASSA FEVER CASE MANAGEMENT

https://ncdc.gov.ng/themes/common/docs/protocols/92_1547068532.pdf

VIRAL HAEMORRHAGIC FEVER AND RESPONSE PLAN

https://ncdc.gov.ng/themes/common/docs/protocols/24_1502192155.pdf

NATIONAL GUIDELINE FOR INFECTION, PREVENTION AND CONTROL FOR VIRAL HAEMORRHAGIC FEVER

https://ncdc.gov.ng/themes/common/docs/protocols/24_1502192155.pdf

INFROMATION RESOURCE

Nigeria Centre for Disease Control: www.ncdc.gov.ng