

COVID-19 SITUATION REPORT

SITUATION REPORT 105

Friday, 12th June 2020



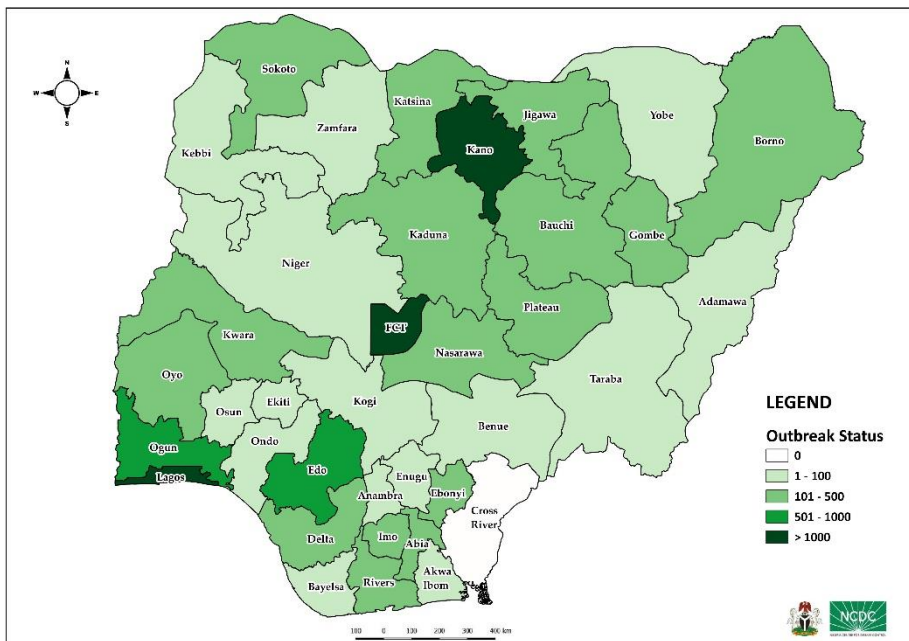
DATA AS REPORTED AND ACCURATE BY NCDC AS AT MIDNIGHT 12th JUNE 2020

HIGHLIGHTS

- Six hundred and twenty-seven (**627**) confirmed cases were reported in the last 24 hours from twenty-three (**23**) states – Lagos (229), FCT (65), Abia (54), Borno (42), Oyo (35), Edo (28), Rivers (28), Gombe (27), Ogun (21), Delta (18), Plateau (18), Bauchi (10), Kaduna (10), Benue (9), Ondo (8), Kwara (6), Enugu (4), Nasarawa (4), Kebbi (3), Niger (3), Sokoto (3), Kano (1) and Yobe (1).
- No new state recorded a confirmed COVID-19 case in the last 24 hours. The total number of states including FCT that have reported at least one confirmed case in Nigeria is still **36** (35 states + FCT).
- Three hundred and ninety-seven (**397**) cases were discharged in the last 24 hours in sixteen (**16**) states – Lagos (140), Oyo (98), FCT (36), Nasarawa (33), Borno (26), Kano (21), Yobe (11), Rivers (8), Jigawa (7), Edo (6), Anambra (5), Niger (2), Benue (1), Kaduna (1), Ondo (1) and Osun (1).
- Twelve (**12**) deaths were recorded in the last 24 hours in five (**5**) states – Anambra (8), Delta (1), Katsina (1), Nasarawa (1) and Ogun (1).
- In today's Subject in Focus, we reflect on Contact Tracing, and how it is key to the national and global COVID-19 response

STATE OF THE NATION

Figure 1: Map of Nigeria showing 35 states and FCT affected by COVID-19



SITUATION UPDATES

Total (New in the last 24 hours)

SAMPLES TESTED

90464 (2032)

CONFIRMED CASES

15181 (627)

AFFECTED STATES INCLUDING FCT

36 (0)

DISCHARGED CASES

4891 (397)

CONFIRMED FATALITIES

399 (12) – 3% CFR

DEMOGRAPHICS

MALE – 10125 (67%)

FEMALE – 5056 (33%)

MOST AFFECTED AGE GROUP

31 - 40 (24%)

PERSONS OF INTEREST

10150 (Total)

10078 (99.3% - Exceeded Follow Up)

PROVENANCE

TRAVEL HISTORY – 289 (2%)

CONTACTS – 3690 (24%)

UNKNOWN EXPOSURE – 11202 (74%)

GLOBAL UPDATES

TOTAL NUMBER OF CASES

7,410,510 (418,294 deaths)

COUNTRIES & TERRITORIES AFFECTED*

213

*Excluding the 2 International Conveyances

SUBJECT IN FOCUS: CONTACT TRACING



Image 1: Contact tracers in Kano

In the absence of a vaccine or proven treatment method for COVID-19, certain measures have been identified to help slow the spread of the disease across populations. One of these is contact tracing. Contact tracing is important in identifying and separating those who have been in contact with a COVID-19 case and are thus, at high risk of having the disease themselves.

Between the 9th and 11th of June 2020, the World Health Organisation (WHO) convened a ‘Global Consultation on Contact Tracing for COVID-19’. The discussions and keynote presentations revolved around the need for countries to increase their contact tracing capacity, especially with a virus as infectious as SARS-CoV-2.

The Government of Nigeria recognises contact tracing as a critical aspect of our COVID-19 response. This is led by the state, with support from NCDC at the national level. Contact tracing has been integral to previous response to Ebola, Lassa fever, monkeypox and other disease outbreaks in Nigeria. The lessons and best practice from contact tracing in previous outbreak response activities are being used in the response to COVID-19. The SORMAS tool for digital surveillance includes a contact tracing functionality, that enables the harmonisation of data for cases and contacts within one tool.

We have identified innovative ways to respond to the challenges of data collection and stigmatisation related to contact tracing in Nigeria. We are generating a state dashboard that will have key performance indicators to help identify where precise intervention will be necessary. We are increasing our risk communications effort to counter fake news and correct misinformation. We are also working with our partners to develop necessary logistics for contact tracing and training of community contact tracers.

There is no doubt that the use of contact tracing and other efforts will shape the future of outbreak response in Nigeria. Our commitment is to support states to strengthen their capacity for contact tracing for COVID-19 and other disease outbreaks.

GENERAL FACT SHEET – DATA AS AT 12TH JUNE 2020

Table 1: States with reported laboratory-confirmed COVID-19 cases, recoveries, deaths and days since last reported case

STATES	CONFIRMED CASES		DISCHARGED CASES		DEATHS		TOTAL ACTIVE CASES	DAYS SINCE LAST REPORTED CASE
	CUMULATIVE	NEW	CUMULATIVE	NEW	CUMULATIVE	NEW		
Lagos	6840	229	1137	140	82	0	5621	0
FCT	1162	65	316	36	25	0	821	0
Kano	1049	1	577	21	50	0	422	0
Ogun	544	21	214	0	14	1	316	0
Edo	518	28	128	6	25	0	365	0
Rivers	482	28	196	8	22	0	264	0
Oyo	469	35	216	98	7	0	246	0
Borno	423	42	231	26	26	0	166	0
Katsina	411	0	219	0	22	1	170	1
Bauchi	402	10	230	0	10	0	162	0
Kaduna	402	10	242	1	10	0	150	0
Gombe	320	27	135	0	12	0	173	0
Jigawa	314	0	178	7	5	0	131	1
Delta	243	18	63	0	12	1	168	0
Ebonyi	152	0	70	0	0	0	82	3
Abia	151	54	16	0	0	0	135	0
Kwara	149	6	70	0	1	0	78	0
Plateau	148	18	99	0	3	0	46	0
Nasarawa	132	4	64	33	6	1	62	0
Sokoto	132	3	103	0	14	0	15	0
Imo	114	0	19	0	1	0	94	1
Zamfara	76	0	71	0	5	0	0	25
Ondo	62	8	33	1	9	0	20	0
Anambra	53	0	18	5	9	8	26	1
Yobe	53	1	36	11	7	0	10	0
Kebbi	50	3	29	0	5	0	16	0
Osun	50	0	41	1	4	0	5	3
Niger	49	3	28	2	1	0	20	0
Akwa Ibom	45	0	14	0	2	0	29	15
Adamawa	42	0	34	0	4	0	4	11
Enugu	39	4	14	0	1	0	24	0
Bayelsa	32	0	20	0	3	0	9	2
Ekiti	30	0	18	0	2	0	10	3
Benue	22	9	2	1	0	0	20	0
Taraba	18	0	10	0	0	0	8	23
Kogi	3	0	0	0	0	0	3	9
TOTAL	15181	627	4891	397	399	12	9891	

States including FCT are arranged in descending order by number of total confirmed cases

SELECTED CHARTS

Figure 2: Daily Epidemic Curve of Confirmed Cases (WK9 – WK24)

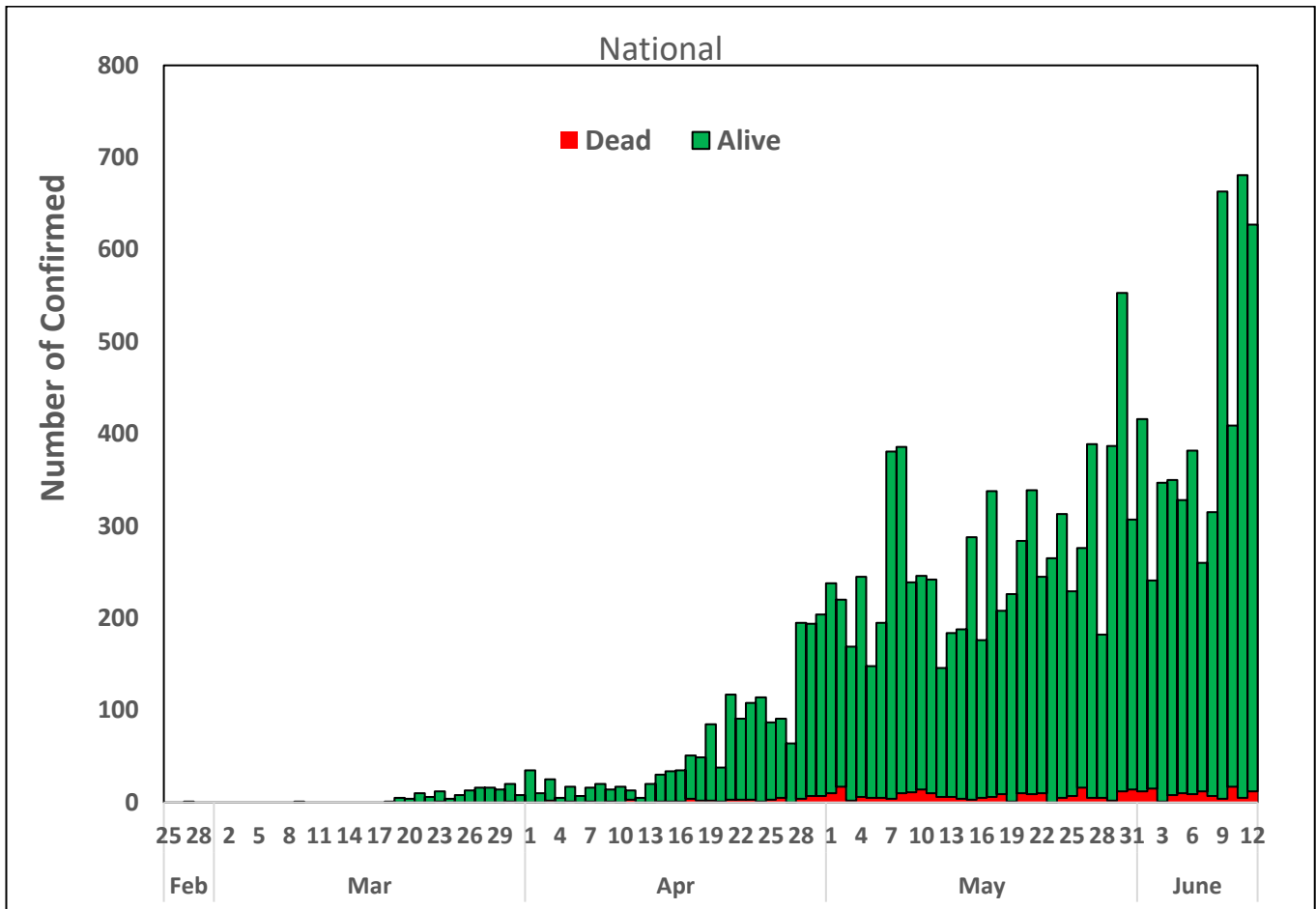
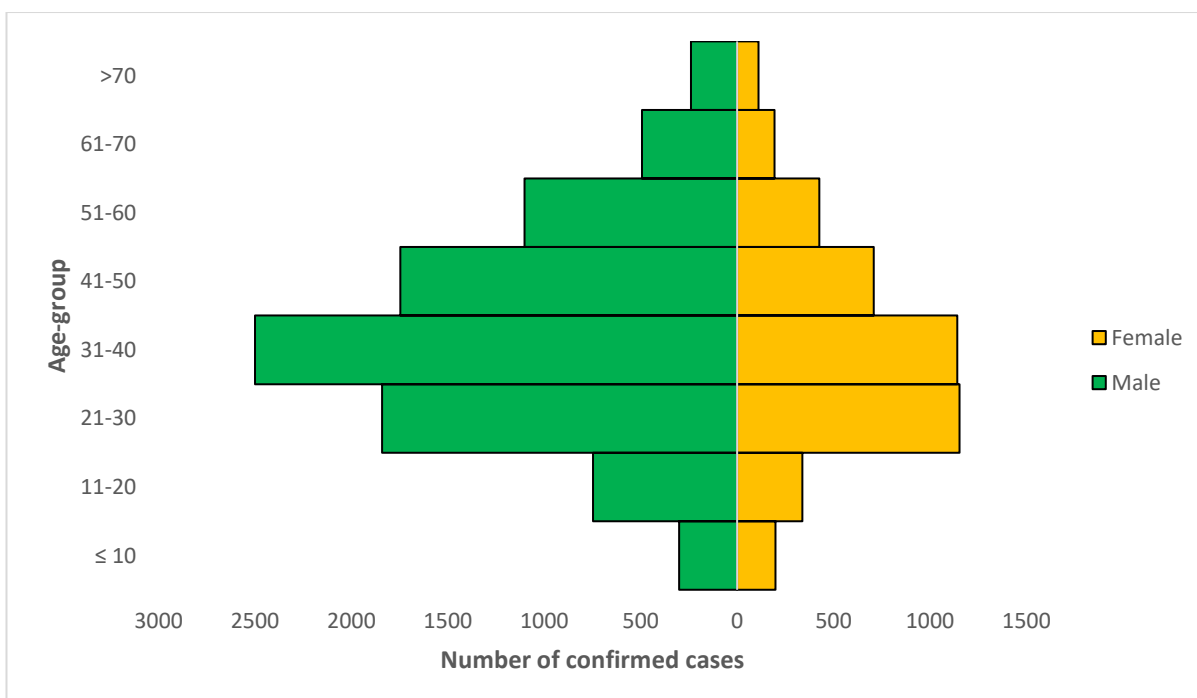


Figure 3: Age-Sex Distribution of Confirmed Cases (WK9 – WK24)



PREPAREDNESS

Since the confirmation of the first case on 27th February 2020, the NCDC has released advisories and statements to help Nigerians and affected groups in particular to respond to the pandemic

- NCDC and the Department of Hospital Services (Federal Ministry of Health) have updated the [case management guidelines](#) (version 3) with reviewed changes such as the discharge criteria and medication being used for the treatment of cases
- Guidelines have been issued for the [safe transportation of remains of persons suspected or confirmed to have died of COVID-19](#)
- Information on diagnostics of the COVID-19 virus can be found in our [detailed FAQ document](#).
- To increase our testing capacity, NCDC has issued guidelines for the [integration of private labs](#).
- Guidelines for [businesses and employers](#) have been updated.
- NCDC has updated its [case definition](#) and [community case definition](#)
- NCDC releases periodic [public health advisories](#) to Nigerians on the COVID-19 disease.
- To adhere to post-lockdown measures, NCDC has released an [advisory on the use of face masks](#), as well as information on the [Use of Cloth face masks](#) and [how to make your cloth face masks](#).
- NCDC has released guidelines for the [management of pregnant women and nursing mothers](#) during the pandemic.
- To address burials of loved ones who die from COVID-19, guidelines have been issued to advise on the [management of dead bodies](#).
- NCDC has released a [Self-Isolation and Quarantine Guide](#) and [Mandatory institutional guideline for returnees to Nigeria](#) to help those who are exposed to COVID-19 confirmed cases or returnees to Nigeria.
- For health centres managing cases, the following documents have been released- a guideline for the [Rational Use of Personal Protective Equipment in the care of COVID-19 cases](#).
- As part of plans to increase the testing capacity of the country, the NCDC published a [National Strategy to Scale Up Access to Coronavirus Disease Testing in Nigeria](#) document.
- The Presidential Task Force has published policies and announcements on COVID-19 [available on the website of the Presidency](#) – including presidential addresses, task force updates and information on livelihood and economic support.

RESPONSE

On 28th February 2020, a multi-sectoral Emergency Operations Centre (EOC) was activated at Level 3 – the highest emergency level in Nigeria –led by NCDC in close coordination with the State Public Health EOCs (PHEOC).

- **Trained and deployed officers to Lagos and the FCT Points Of Entry (POE) to screen and monitor Persons Of Interest (POIs) ahead of the implementation of the new evacuation guideline**
- **Ongoing review of States` Incident Action Plan and offsite support on implementation of prioritised activities**
- **Ongoing IPC training for Primary Health Care workers across the 17 LGAs in Plateau State**
- **57 personnel were trained on sample collection in Katsina**
- **Finalised guidelines for schools reopening**
- **Organised States` stakeholders coordination meeting**
- **Completed commodity distribution of response supplies to the 36 State Ministries of Health (SMOH) for State treatment centres and Federal Teaching Hospitals/Federal Medical Centres**
- Intensified tracking of daily sample collection by States for testing and resolve data discrepancies on SORMAS
- Sensitisation workshop on COVID-19 IPC for Healthcare workers from Public and Private Hospitals in FCT
- Supervision of IPC activities in Katsina State Internally Displaced Persons (IDP) camps and Treatment Centres (TCs) across the country

- Three additional labs activated in Akwa Ibom, Jigawa and Oyo State
- Ongoing optimisation of laboratories in Abia, Ekiti, Gombe, Kwara and Ondo States
- Commenced planning for targeted community sensitisation activities in 20 high burden local Government Areas (LGAs)
- All education materials can be found via www.covid19.ncdc.gov.ng