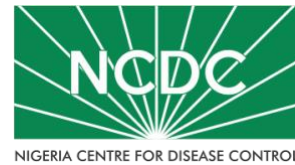


COVID-19 SITUATION REPORT

SITUATION REPORT 183

Saturday, 29th August 2020



NIGERIA CENTRE FOR DISEASE CONTROL

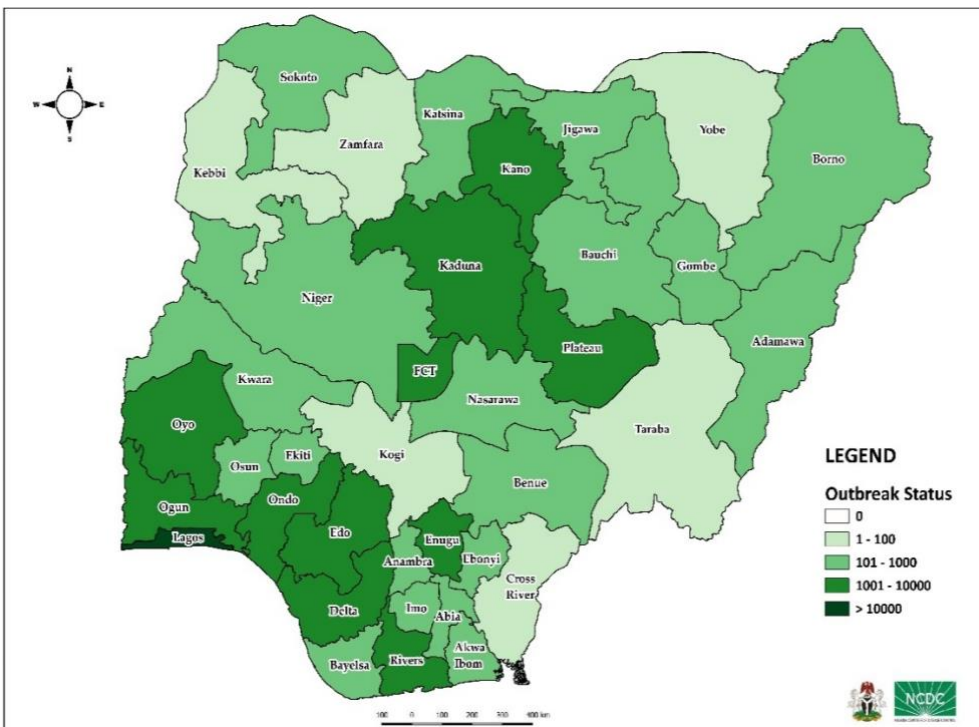
DATA AS REPORTED AND ACCURATE BY NCDC AS AT MIDNIGHT 29TH AUGUST 2020

HIGHLIGHTS

- Two hundred and fifty (**250**) confirmed cases were reported in the last 24 hours from **20** states – Plateau (69), FCT (41), Lagos (21), Delta (14), Kaduna (14), Bayelsa (13), Enugu (13), Ekiti (11), Bauchi (9), Ogun (8), Edo (7), Oyo (7), Rivers (6), Adamawa (4), Osun (4), Nasarawa (3), Ebonyi (2), Kwara (2), Gombe (1) and Imo (1).
- Two hundred and ninety-seven (**297**) discharges have been reported in the last 24 hours in **15** states – Benue (75), Plateau (67), Kaduna (34), Gombe (27), Adamawa (21), Rivers (18), FCT (14), Edo (11), Kano (10), Ogun (7), Osun (7), Bauchi (2), Ekiti (2), Imo (1) and Zamfara (1).
- No death was reported in the last 24 hours
- All **36** states in Nigeria, and the FCT, have reported a confirmed case.

STATE OF THE NATION

Figure 1: Map of Nigeria showing 36 states and FCT affected by COVID-19



SITUATION UPDATES

Total (New in the last 24 hours)

SAMPLES TESTED

402,070 (3,766)

CONFIRMED CASES

53,727 (250)

AFFECTED STATES INCLUDING FCT

37

DISCHARGED CASES

41,314 (297)

CONFIRMED FATALITIES

1,011 (0) – 1.9% CFR

DEMOGRAPHICS

MALE – 34,199 (64%)

FEMALE – 19,528 (36%)

MOST AFFECTED AGE GROUP

31 - 40 (25%)

PERSONS OF INTEREST

11,622 (Total)

11,546 (99.3% - Exceeded Follow Up)

PROVENANCE

TRAVEL HISTORY – 850 (1%)

CONTACTS – 12,737 (24%)

UNKNOWN EXPOSURE – 40,140 (75%)

GLOBAL UPDATES

TOTAL NUMBER OF CASES

24,587,513 (833,556 deaths)

COUNTRIES & TERRITORIES AFFECTED

216*

*Excluding the 2 International Conveyance

GENERAL FACT SHEET – DATA AS AT 29TH AUGUST 2020

Table 1: States with reported laboratory-confirmed COVID-19 cases, recoveries, deaths and days since last reported case

STATES	CONFIRMED CASES		DISCHARGED CASES		DEATHS		TOTAL ACTIVE CASES	DAYS SINCE LAST REPORTED CASE
	TOTAL	NEW	TOTAL	NEW	TOTAL	NEW		
Lagos	18,104	21	15,228	0	202	0	2,674	0
FCT	5,149	41	1,524	14	50	0	3,575	0
Oyo	3,107	7	1,952	0	37	0	1,118	0
Edo	2,577	7	2,300	11	100	0	177	0
Plateau	2,443	69	1,328	67	29	0	1,086	0
Rivers	2,134	6	1,960	18	57	0	117	0
Kaduna	2,114	14	1,950	34	12	0	152	0
Delta	1,744	14	1,540	0	47	0	157	0
Kano	1,725	0	1,537	10	54	0	134	1
Ogun	1,646	8	1,488	7	26	0	132	0
Ondo	1,534	0	1,360	0	31	0	143	1
Enugu	1,155	13	907	0	21	0	227	0
Ebonyi	973	2	931	0	27	0	15	0
Kwara	958	2	773	0	25	0	160	0
Katsina	789	0	457	0	24	0	308	1
Osun	779	4	729	7	16	0	34	0
Abia	763	0	669	0	7	0	87	1
Borno	740	0	667	0	36	0	37	6
Gombe	723	1	636	27	23	0	64	0
Bauchi	666	9	550	2	14	0	102	0
Imo	527	1	193	1	11	0	323	0
Benue	451	0	216	75	9	0	226	5
Nasarawa	434	3	298	0	12	0	124	0
Bayelsa	391	13	345	0	21	0	25	0
Jigawa	322	0	308	0	11	0	3	44
Akwa Ibom	278	0	229	0	8	0	41	2
Ekiti	262	11	185	2	4	0	73	0
Niger	241	0	214	0	12	0	15	2
Adamawa	221	4	180	21	15	0	26	0
Anambra	207	0	159	0	18	0	30	3
Sokoto	158	0	138	0	16	0	4	6
Kebbi	93	0	82	0	8	0	3	1
Taraba	87	0	73	0	5	0	9	4
Cross River	82	0	73	0	8	0	1	5
Zamfara	78	0	73	1	5	0	0	9
Yobe	67	0	59	0	8	0	0	30
Kogi	5	0	3	0	2	0	0	57
Total	53,727	250	41,314	297	1,011	0	11,402	

States, including FCT, are arranged in descending order by number of total confirmed cases and then alphabetical order

SELECTED CHARTS

Figure 2: Daily Epidemic Curve of Confirmed Cases (WK9 – WK35)

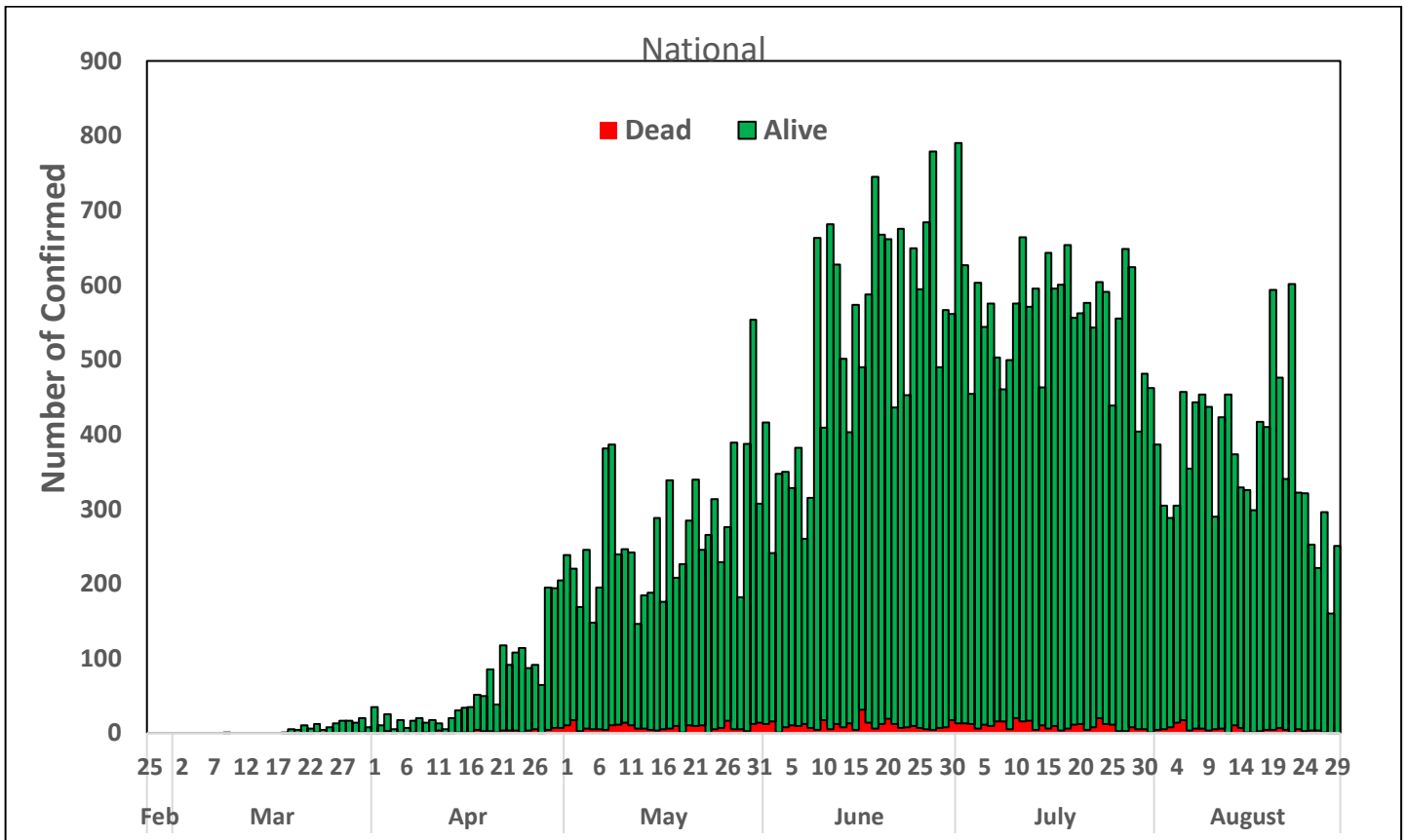
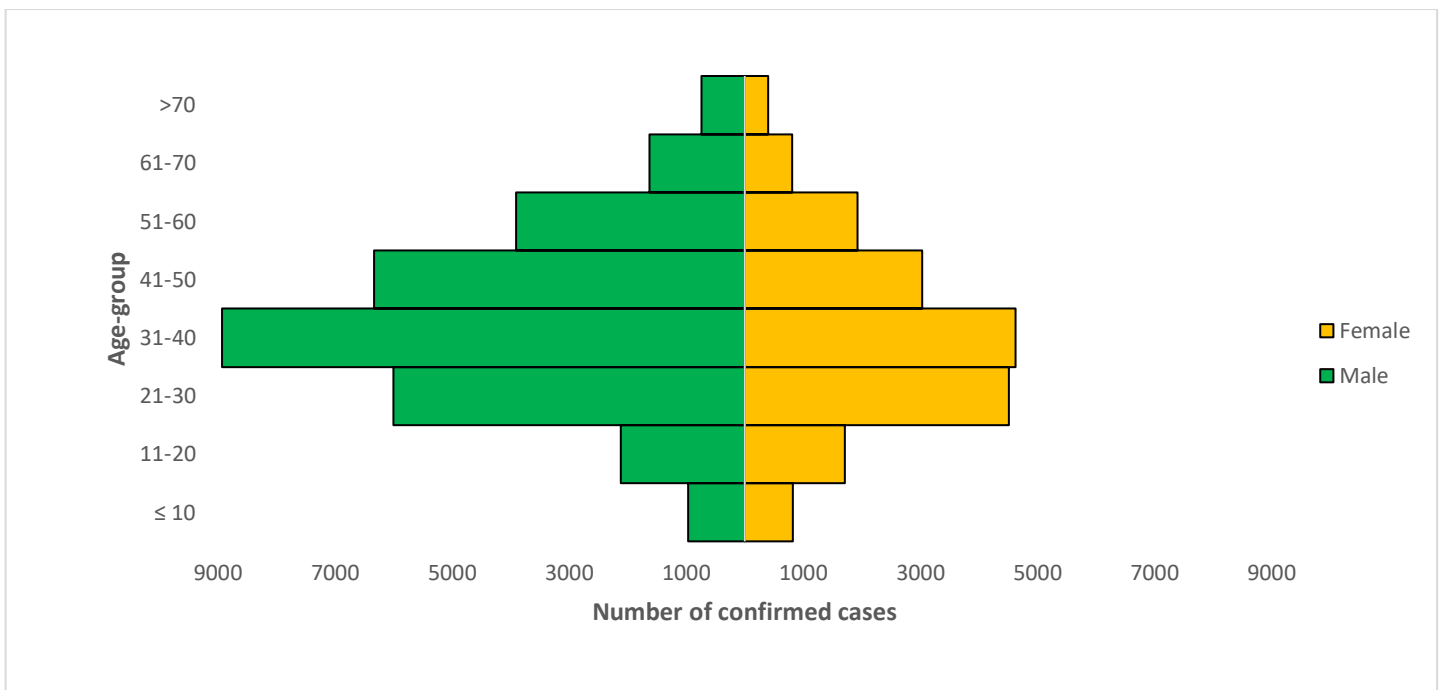


Figure 3: Age-Sex Distribution of Confirmed Cases (WK9 – WK35)



PREPAREDNESS

Since the confirmation of the first case on 27th February 2020, the NCDC has released advisories and statements to help Nigerians and affected groups in particular to respond to the pandemic

- NCDC recently published the first edition of a quick reference guide on setting up sample collection centre - [A step by step guide on setting up a sample collection centre](#)
- NCDC has launched an online course on [Infection, Prevention and Control \(IPC\) for COVID-19](#) NCDC eLearning platform
- Ahead of forthcoming elections in the country, NCDC has issued [Guidelines for Conducting Elections During the COVID-19 Outbreak in Nigeria](#).
- To protect our elders, and those with pre-existing medical conditions, NCDC has issued an [Advisory for Vulnerable Groups](#).
- NCDC has released [guidelines on the re-opening of places for worship](#).
- NCDC has released [Strategies to Improve Surveillance for COVID-19 Guidance for States](#)
- The Nigeria Police Force has released COVID-19 operational guidelines for the [Police and other Law Enforcement Agencies](#) in Nigeria
- Guidelines have been issued for the [safe transportation of remains of persons suspected or confirmed to have died of COVID-19](#)
- Information on diagnostics of the COVID-19 virus can be found in our [detailed FAQ document](#).
- To increase our testing capacity, NCDC has issued guidelines for the [integration of private labs](#).
- Guidelines for [businesses and employers](#) have been updated.
- NCDC has updated its [case definition](#) , [community case definition](#) and [case management guide](#).
- NCDC releases periodic [public health advisories](#) to Nigerians on the COVID-19 disease.
- To adhere to post-lockdown measures, NCDC has released an [advisory on the use of face masks](#), as well as information on the [Use of Cloth face masks](#) and [how to make your cloth face masks](#).
- NCDC has released guidelines for the [management of pregnant women and nursing mothers](#) during the pandemic.
- To address burials of loved ones who die from COVID-19, guidelines have been issued to advise on the [management of dead bodies](#).
- For health centres managing cases, the following documents have been released- a guideline for the [Rational Use of Personal Protective Equipment in the care of COVID-19 cases](#).
- As part of plans to increase the testing capacity of the country, the NCDC published a [National Strategy to Scale Up Access to Coronavirus Disease Testing in Nigeria](#) document.
- The Presidential Task Force has published policies and announcements on COVID-19 [available on the website of the Presidency](#) – including presidential addresses, task force updates and information on livelihood and economic support.

RESPONSE

On 28th February 2020, a multi-sectoral Emergency Operations Centre (EOC) was activated at Level 3 – the highest emergency level in Nigeria –led by NCDC in close coordination with the State Public Health EOCs (PHEOC).

- **Completed deployment of Surveillance and Outbreak Response Management Analysis System (SORMAS) tool in Osun and Benue States**
- **Trained 34 laboratory scientists of the Nigerian Airforce Medical Corps on sample collection, packaging and transportation in FCT**
- **Commenced testing at the Bayelsa State molecular laboratory in Yenagoa**
- **Deployed response materials, commodities and Rapid Response Team (RRT) kits to several states**
- Engaged five (5) South West States on automation of release of negative results
- Built a dashboard into the Surveillance and Outbreak Response Management Analysis System (SORMAS) platform improve the visualisation and promote data use, especially at state and LGA levels to drive response decisions

- Completed optimisation and biosafety cabinet certification in Bayelsa State molecular laboratory in Yenagoa
- Completed clinicians sensitisation workshop in University of Abuja Teaching Hospital (UATH) Gwagwalada, FCT
- Issued additional laboratory commodities and supplies to Kebbi States
- Ongoing data collection at National hospital Abuja to Implement clinical management study to determine the management and outcome of COVID-19 cases in Treatment Centres across states
- Engaged with (Nigeria Governors Forum) NGF and Commissioners' for information to create buy-in and commitment; assign clear roles for synergy and avoidance of duplication
- All education materials can be found via www.covid19.ncdc.gov.ng